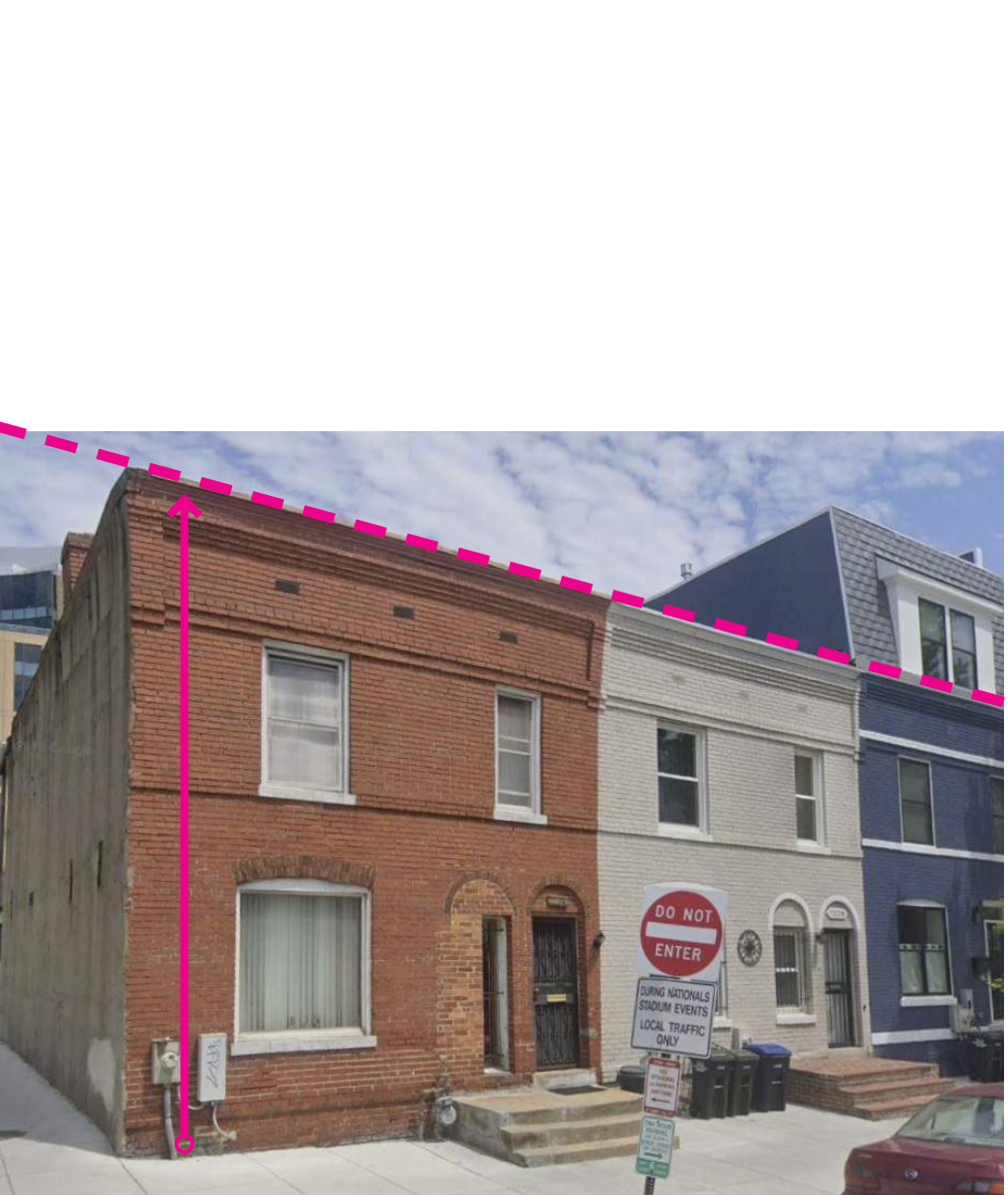
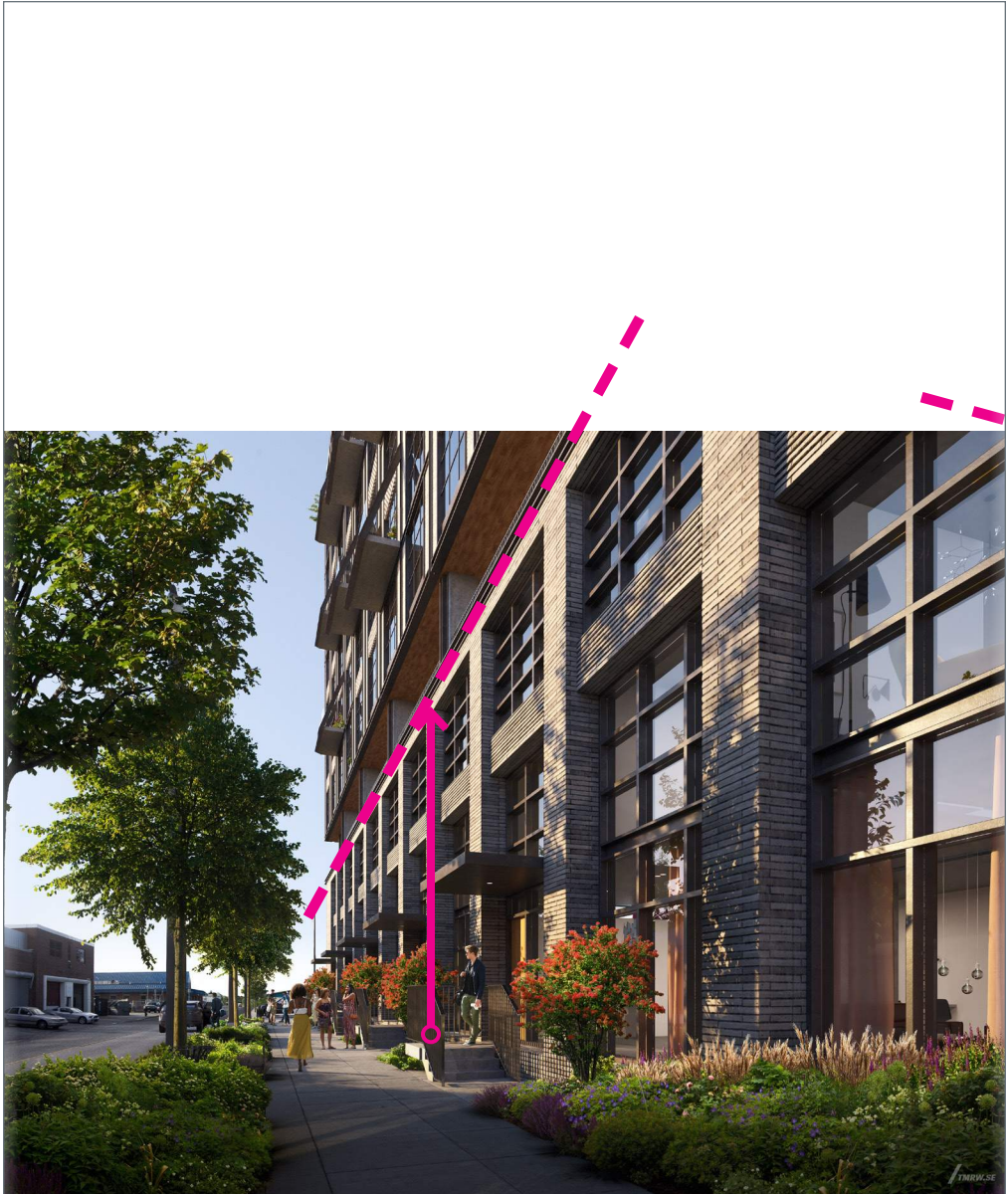
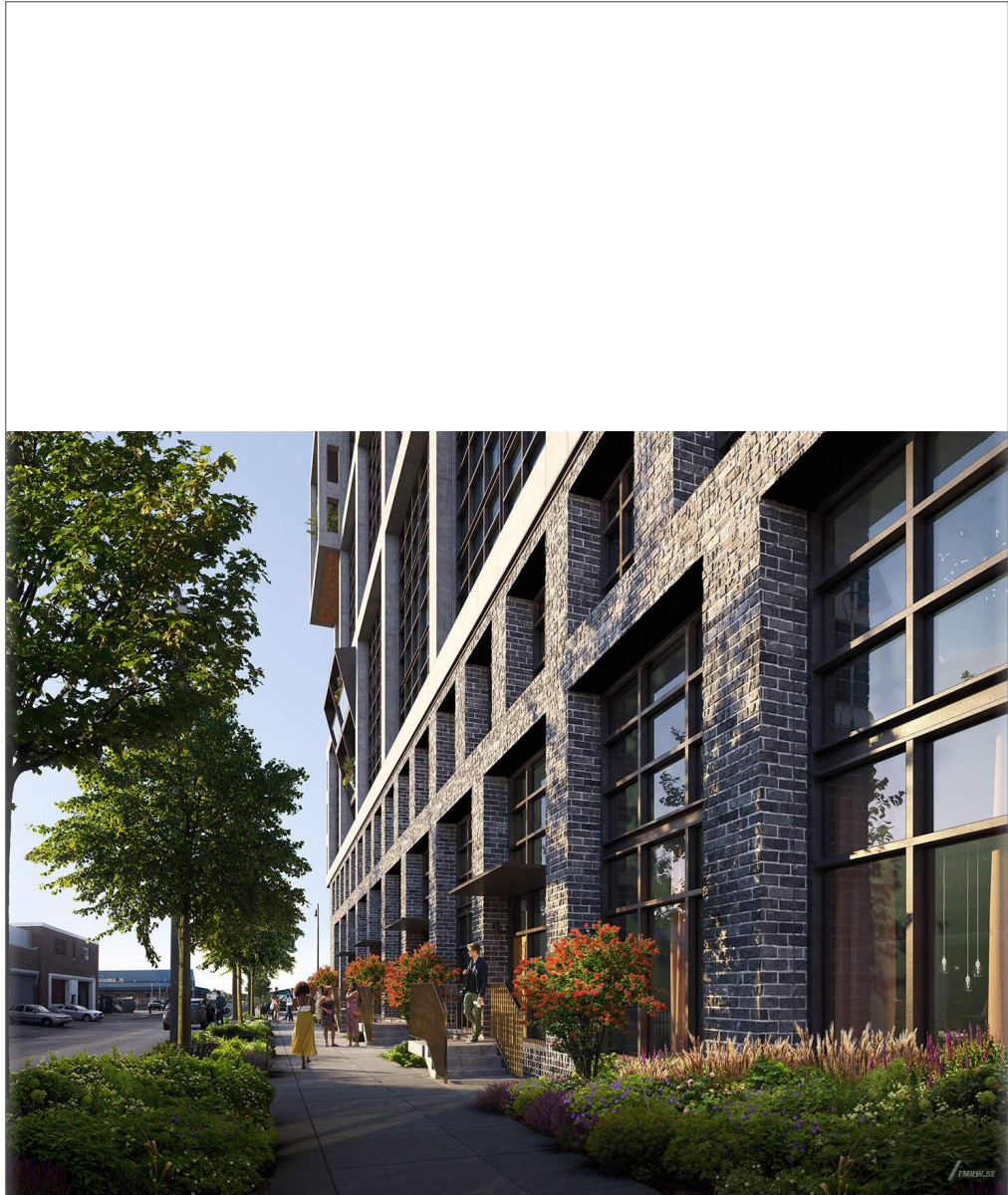


Design Revisions Item #10 - Tie To Low Rise Neighbors

Pre-ANC Feedback

Current Version



Revised Podium

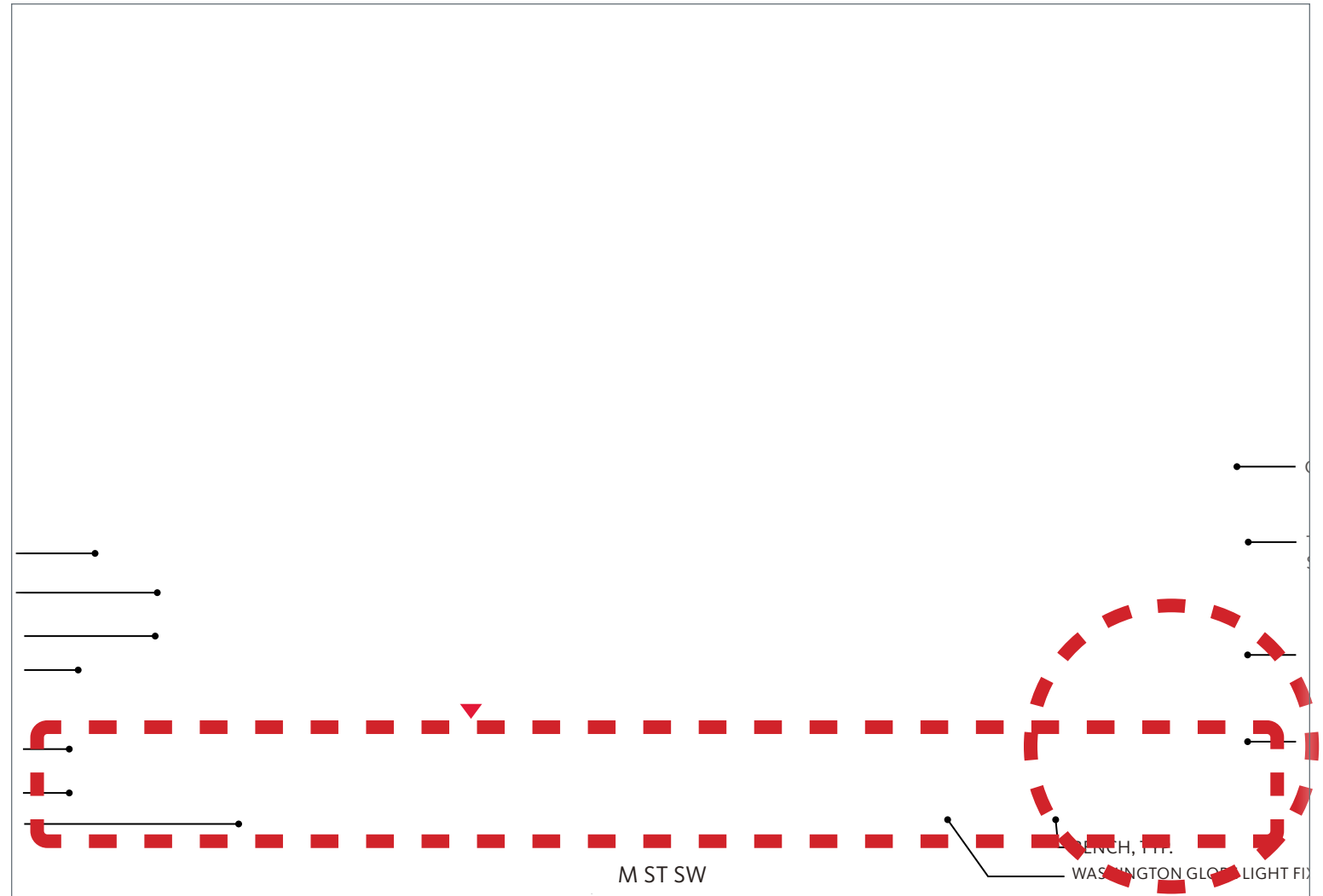
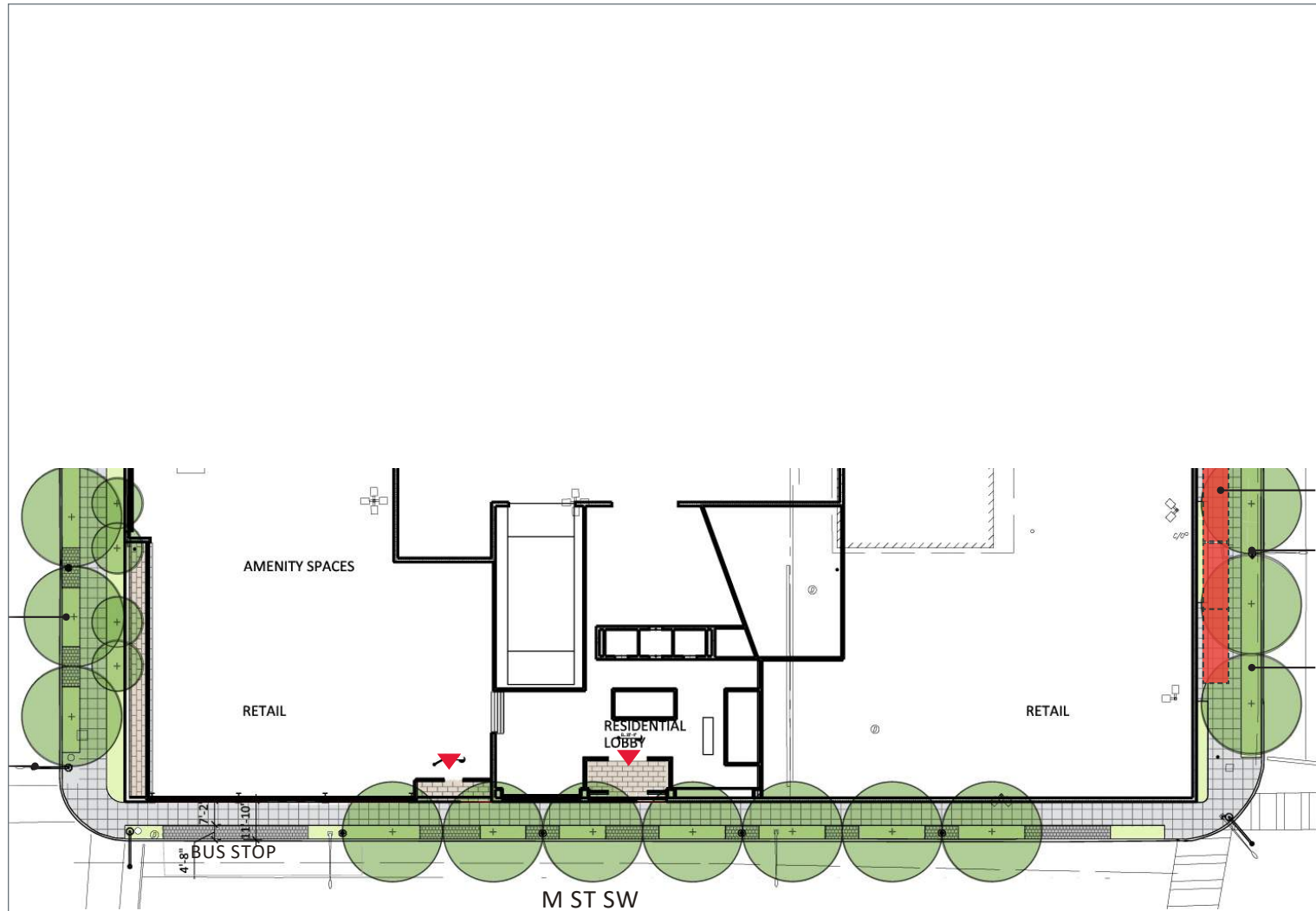
- Added a reveal at level 3 to better highlight a pedestrian-centric scale of the walk-up units.
- New reveal better associates the podium with low-rise neighbors.

Low Rise Neighbors

Design Revisions Item #11 - Set Back Retail on M Street

Pre-ANC Feedback

Current



Revised Facade

- Added 3' setback along M Street SW across Levels 1, 2, and 3.
- Introduced re-entrant corner at southeast podium corner.

Design Revisions Item #12 - Set Back Facade on M Street

Pre-ANC Feedback



Current

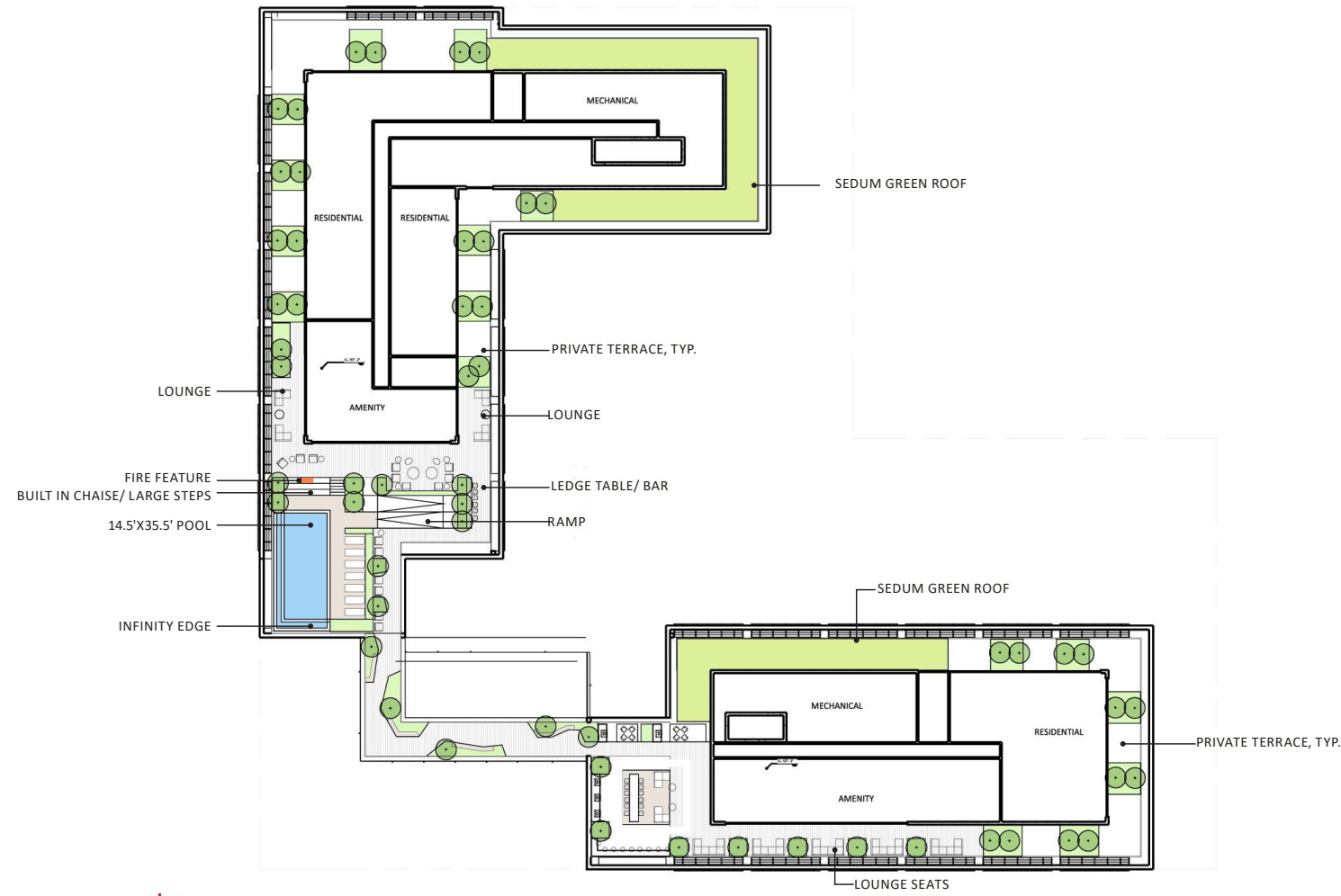


Revised Facade

- Added setback at levels 12 & 13 that aligns with upper pavilion setback (10'-0").

Design Revisions Item #13 - Dog Relief Zone

Pre-ANC Feedback



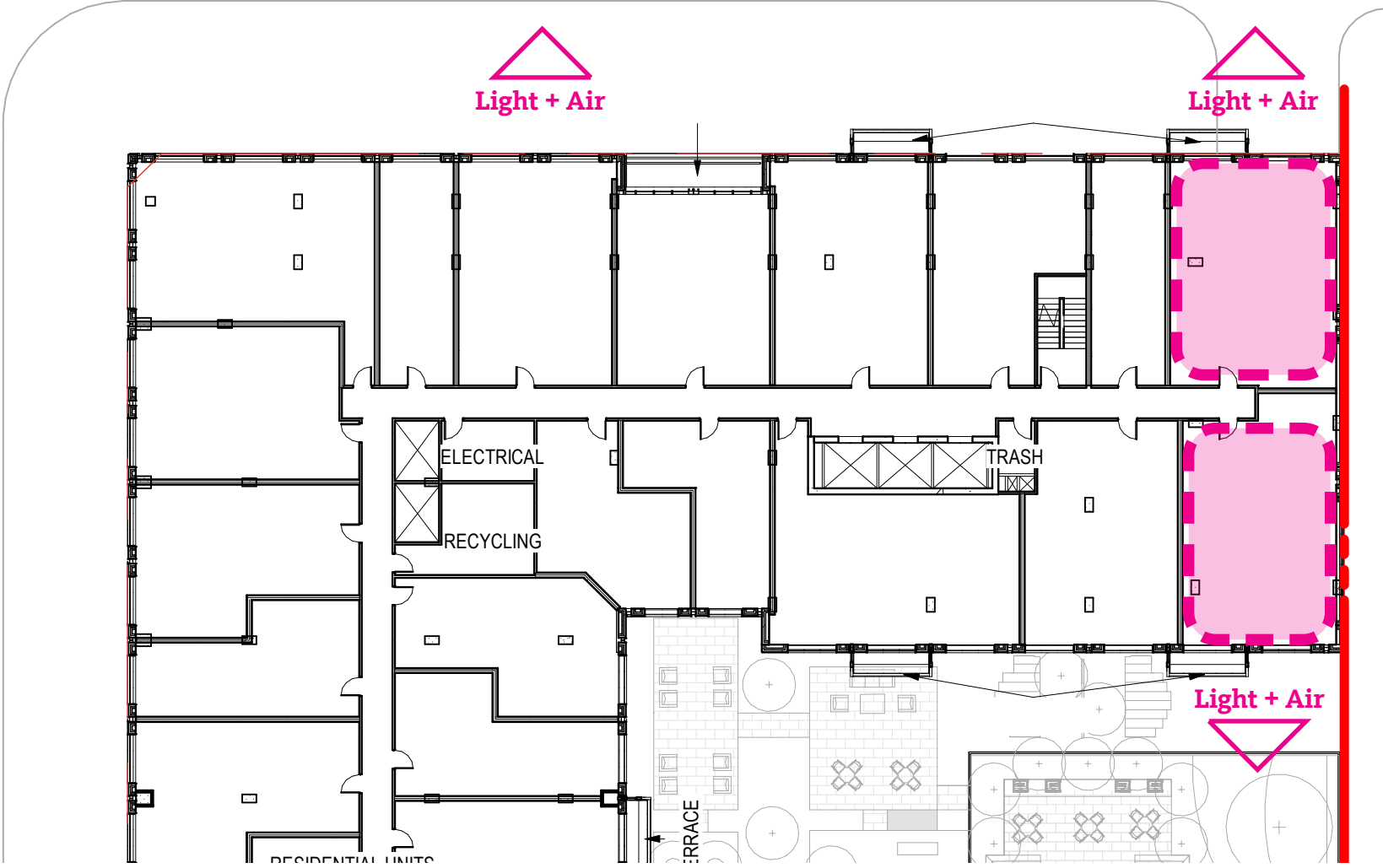
Current



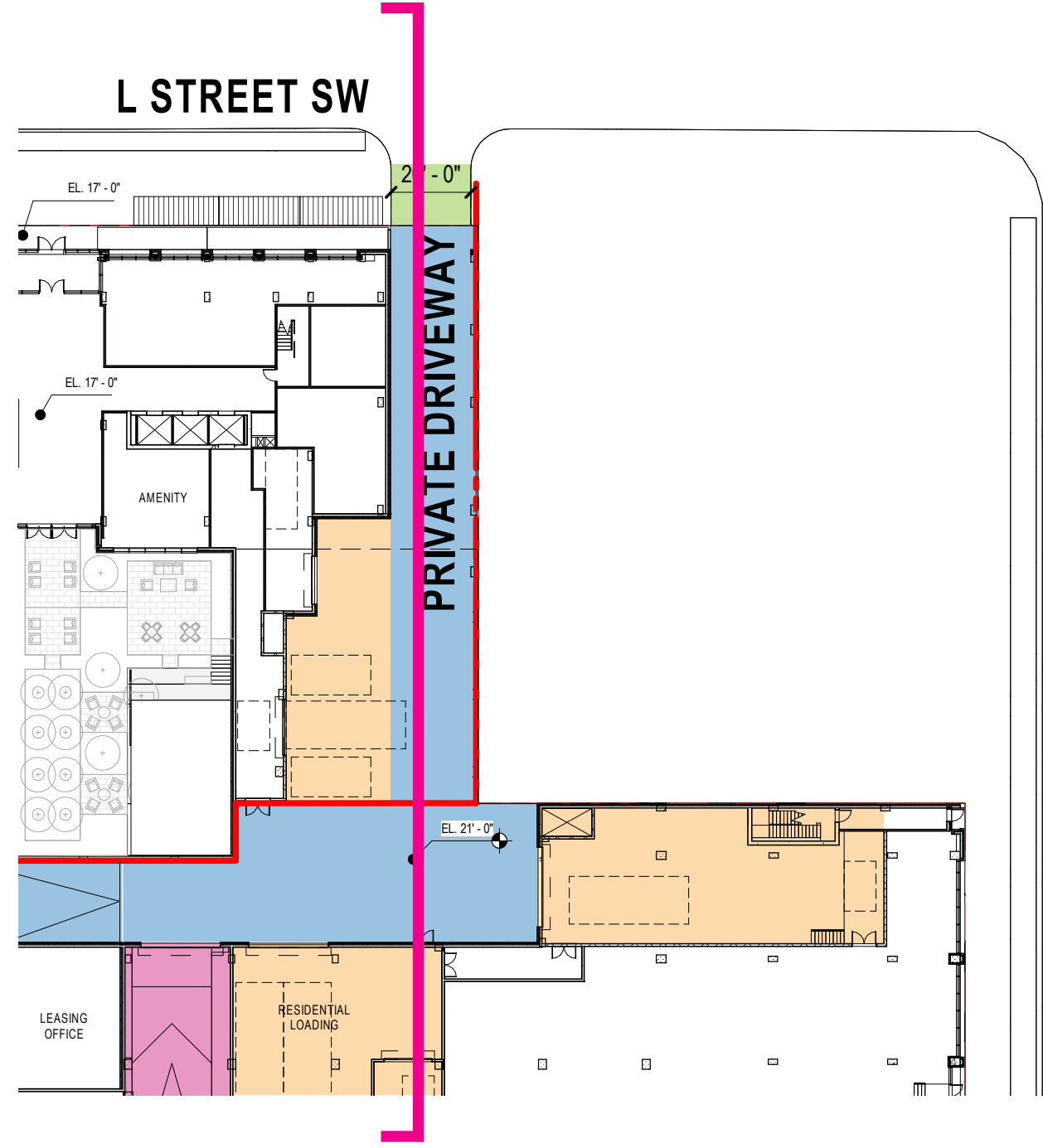
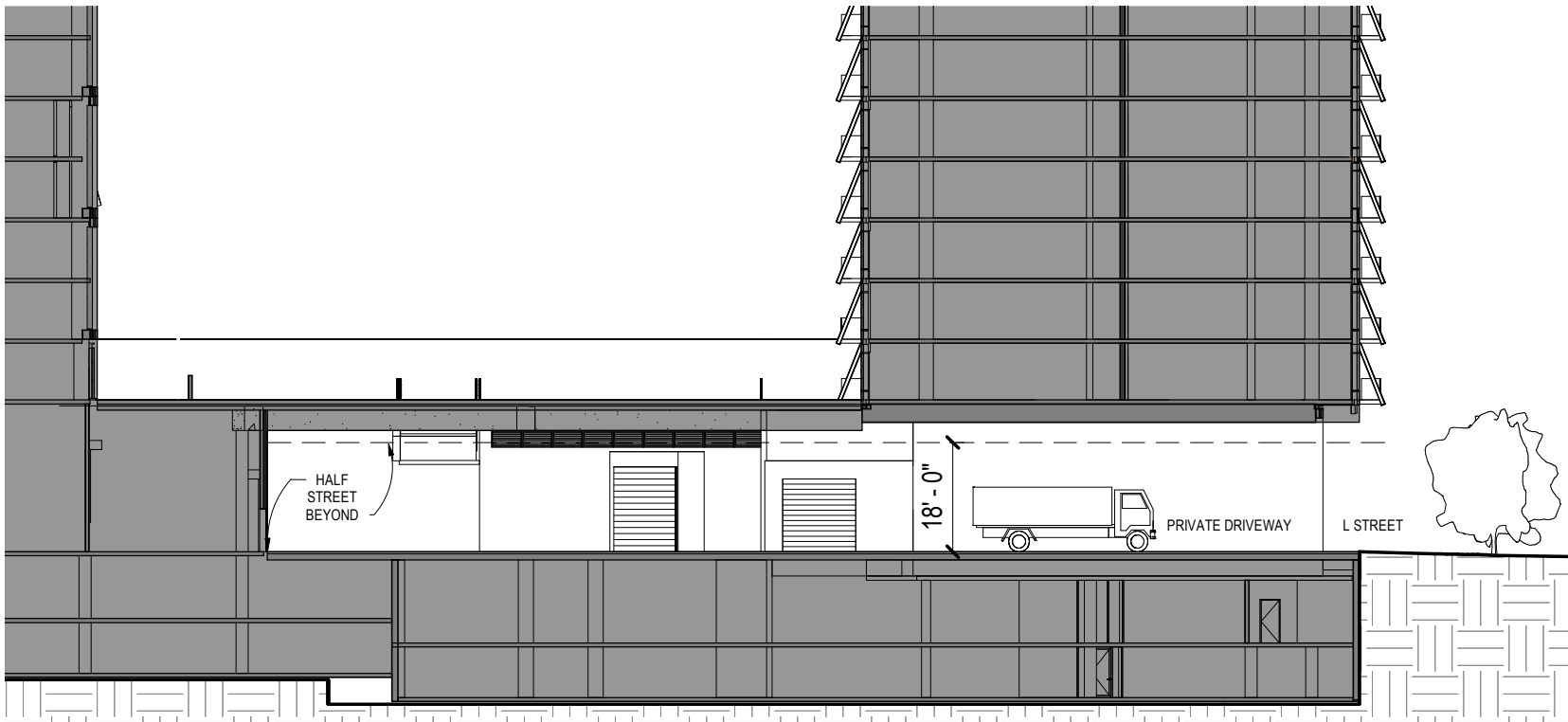
Revised Roof Level

- Added dog relief zone.

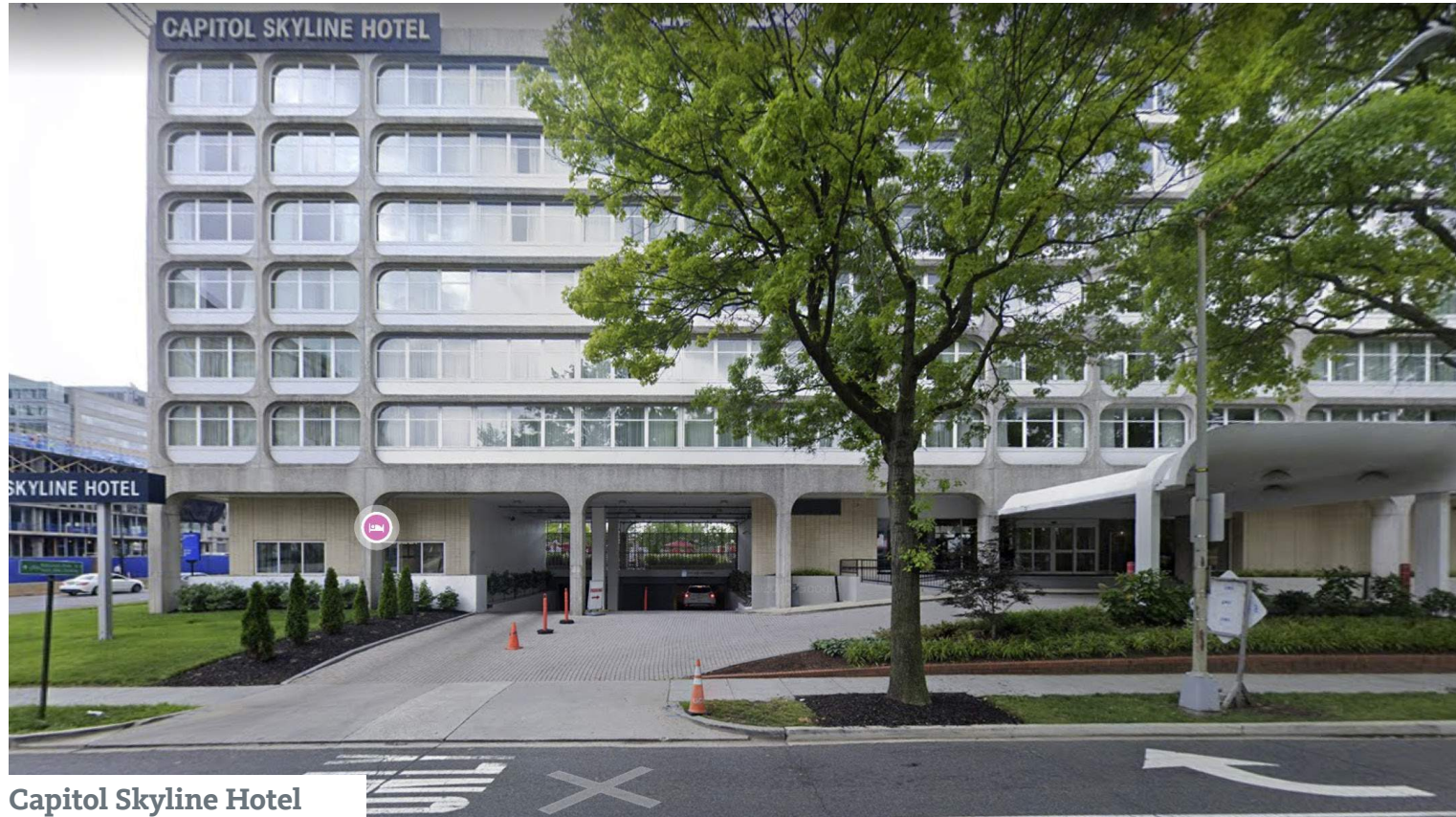
Design Revisions Item #14 - Configuration of Tower at Vehicular Access Point on L Street



Design Revisions Item #14 - Configuration of Tower at Vehicular Access Point on L Street



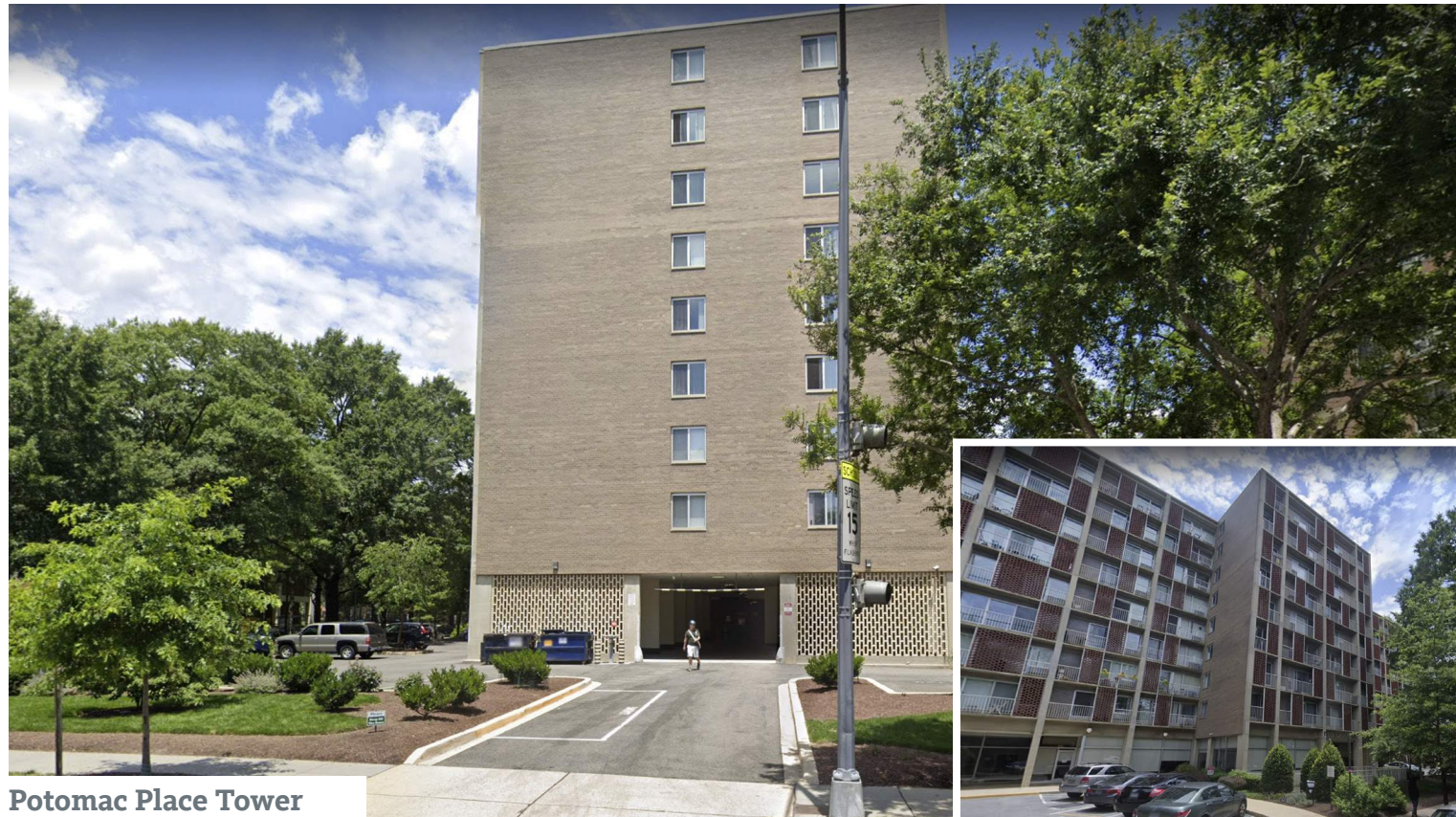
Design Revisions Item #14 - L Street Vehical Entry



Capitol Skyline Hotel



10 K St SE

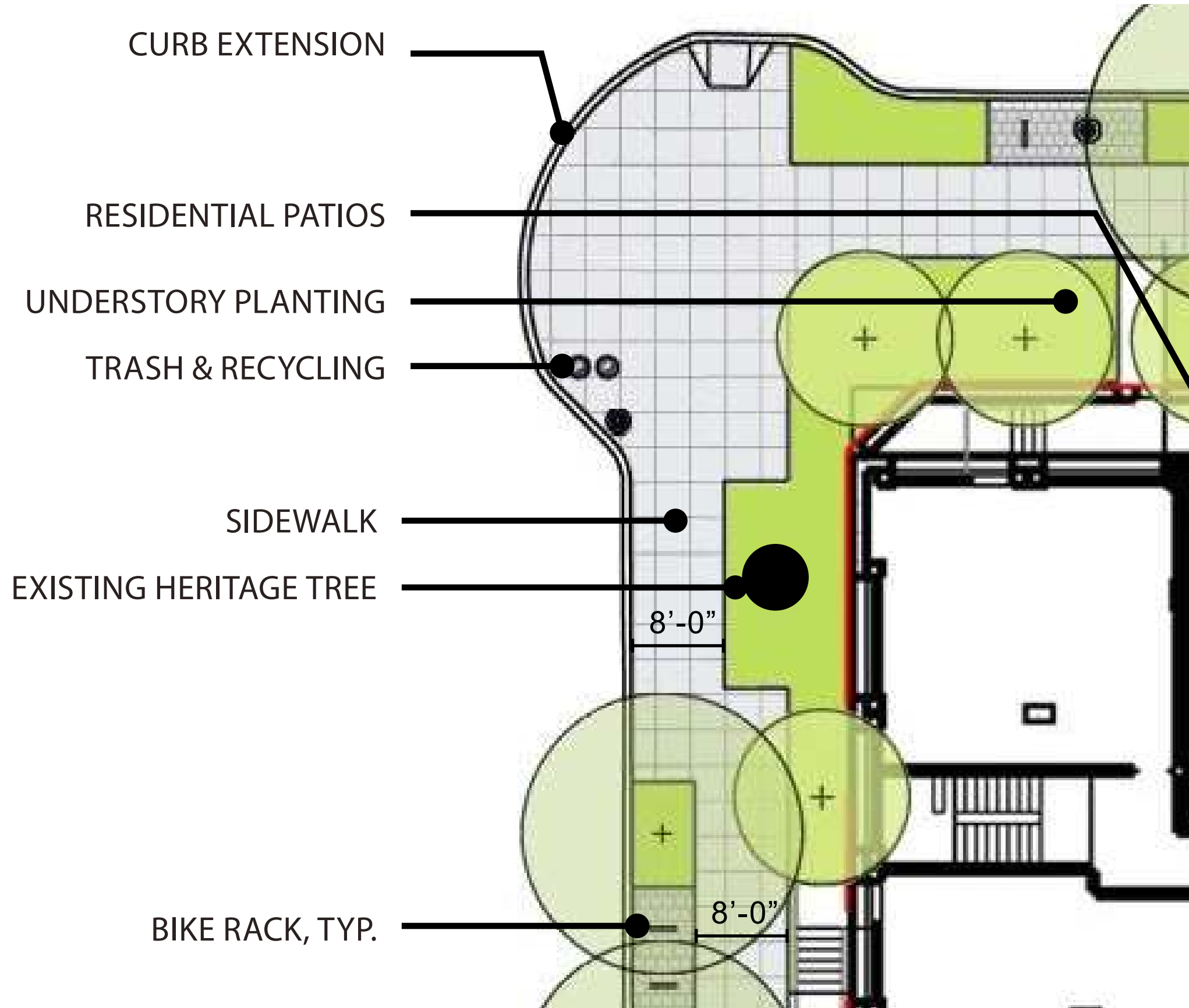


Potomac Place Tower



301 M SW

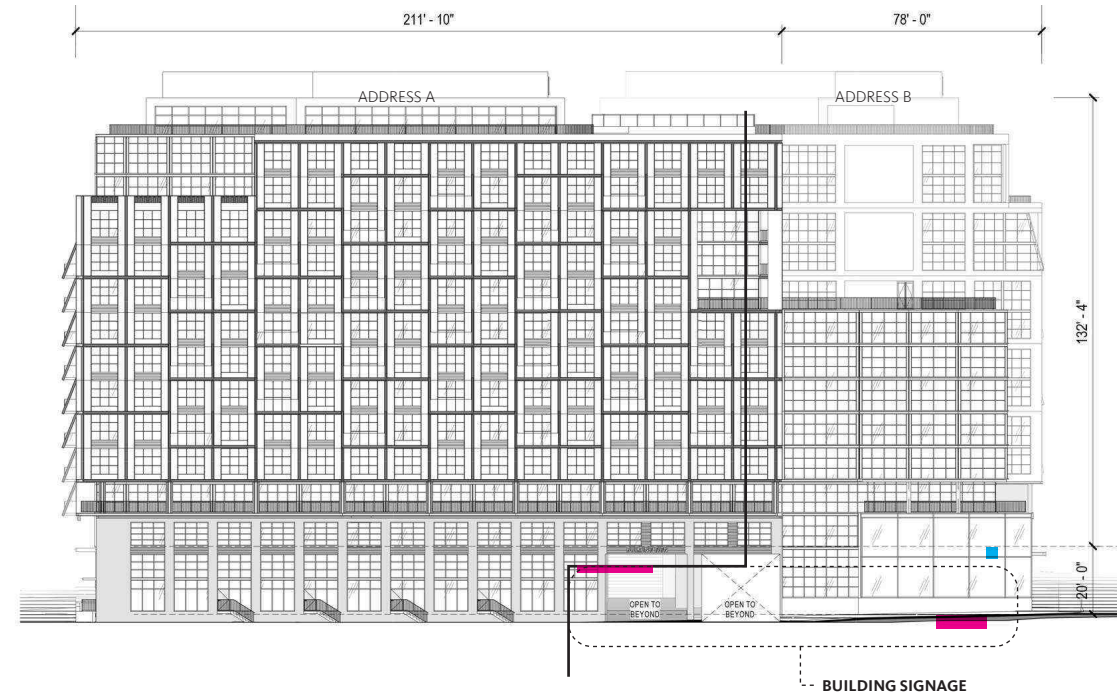
Design Revisions Heritage Tree



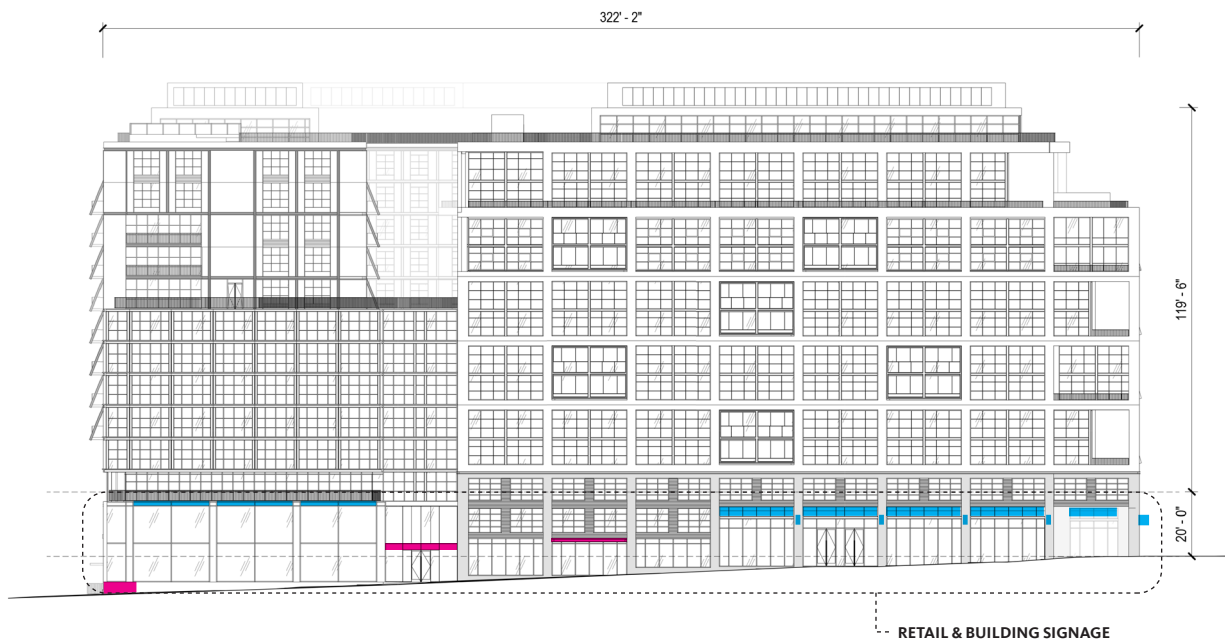
Design Revisions Signage



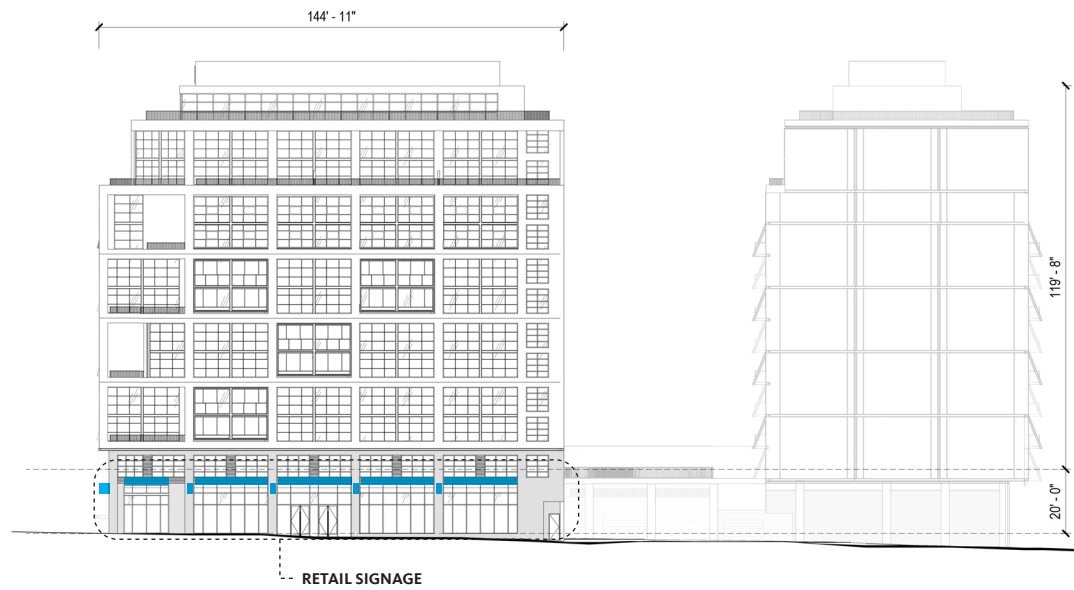
NORTH ELEVATION



WEST ELEVATION



SOUTH ELEVATION



EAST ELEVATION

