



BHMP: 20'-10"

BHMP: 20'-10"

I Street SW



EAST ELEVATION - FOURTH STREET SW

KGD
architecture

WESTMINSTER
PRESBYTERIAN CHURCH

DP
DANTES PARTNERS

BOZZUTO

WESTMINSTER CHURCH LIVING
400 I STREET SW, WASHINGTON DC

PUD & ZONING MAP
AMENDMENT SUPPLEMENTAL
PREHEARING SUBMISSION
MARCH 23, 2021

A 3.2
ZONING COMMISSION
District of Columbia
CASE NO.20-12
EXHIBIT NO.25A4



BHMP: 20'-10"

BHMP: 20'-10"

I Street SW

Garage
Entrance

Loading Dock
Entrance



WEST ELEVATION - MAKEMIE PLACE

KG D
architecture

WESTMINSTER
PRESBYTERIAN CHURCH



DP
DANTES PARTNERS



WESTMINSTER CHURCH LIVING
400 I STREET SW, WASHINGTON DC

PUD & ZONING MAP
AMENDMENT SUPPLEMENTAL
PREHEARING SUBMISSION
MARCH 23, 2021

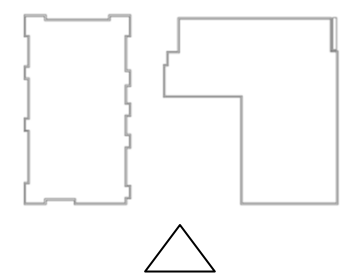
A-3.3



Makemie PL SW

Church Dining Hall Entrance

Park and 4th Street



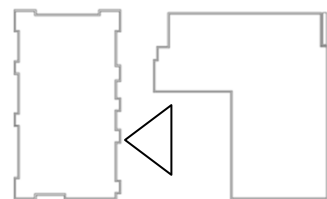
SOUTH ELEVATION



WESTMINSTER CHURCH LIVING
400 I STREET SW, WASHINGTON DC

PUD & ZONING MAP
AMENDMENT SUPPLEMENTAL
PREHEARING SUBMISSION
MARCH 23, 2021

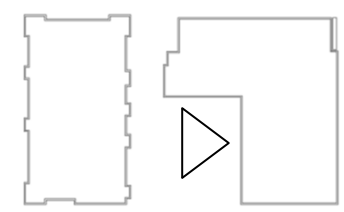
A-3.4



EAST BUILDING ELEVATION – RESIDENTIAL COURTYARD



I Street SW



WEST BUILDING ELEVATION – SENIOR RESIDENTIAL COURTYARD



WESTMINSTER CHURCH LIVING
400 I STREET SW, WASHINGTON DC

PUD & ZONING MAP
AMENDMENT SUPPLEMENTAL
PREHEARING SUBMISSION
MARCH 23, 2021

A-3.6

**TERRACOTTA
RAINSCREEN
SYSTEM**

1A
1B



PREFINISHED CMU

3A (12"X24")



STONE BASE

3C



**FIBER CEMENT
PANEL SYSTEM**

2A
2B



**METAL PANEL
GLAZING FRAME**

4A



2C

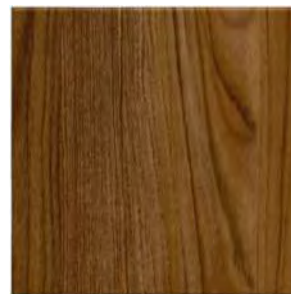


4B



**WOOD FINISH ON
METAL CLADDING
(AT PENTHOUSE LEVEL CANOPIES)**

5A



GLAZING

- 6A VINYL WINDOW SYSTEM
- 6B ALUMINUM WINDOW SYSTEM
- 6C ALUMINUM STOREFRONT SYSTEM
- 6D CHANNEL GLASS SYSTEM
- 6E ALUMINUM WINDOW WALL SYSTEM

LOUVERS

- 7A 8"X1'
- 7B 2'X8'

OTHER KEYNOTES:

- 8A ARCHITECTURAL EMBELLISHMENT
- 8B RAILING (COLOR TO MATCH 4A)
- 8C CANOPY (COLOR TO MATCH 4A)
- 8D EQUIPMENT SCREEN (COLOR TO MATCH 2A)
- 8E SCUPPER
- 8F PRE-FINISHED METAL SIGNAGE
- 8H EQUIPMENT SCREEN

EXTERIOR MATERIAL KEY



EXTERIOR MATERIAL SAMPLES



- Fiber Cement Panel 2A
- Equipment Screen 8D
- Window System 6A
- Channel Glass System 8A, 6D
- Fiber Cement Panel 2B, 2C
- Louvers 7B, Color to match 2C
- Railing, 8B, Color to match 4A
- Metal Panel Canopy 8C
- Metal Panel 4B
- Pre- Finished CMU 3A

- Fiber Cement Panel 2A
- Metal Panel Canopy 8C, 5A
- Scupper 8E
- Louvers 7A
- Terracotta Rainscreen System 1A, 1B
- Metal Panel 4A
- Window System 6B
- Window Wall System 6E
- Metal Panel Canopy 8C, 4B
- Metal Panel 4B
- Metal Panel 4A
- Storefront System 6C

BHMP: 20'-10" BHMP: 20'-10"

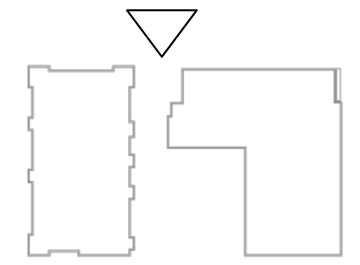
Park and 4th Street

Church Entrance

Senior Residential Entrance

Residential Entrance

Makemie PL SW



KEY PLAN

BUILDING MATERIALS
NORTH ELEVATION - I STREET SW



WESTMINSTER CHURCH LIVING
400 I STREET SW, WASHINGTON DC

PUD & ZONING MAP
AMENDMENT SUPPLEMENTAL
PREHEARING SUBMISSION
MARCH 23, 2021

A-4.1



- Metal Panel Canopy
8C, 5A
- Equipment Screen
8D
- Window System
6A
- Fiber Cement Panel
2A
- Window System
6A
- Louvers
7B, Color to match 2C
- Railing,
8B, Color to match 4A
- Fiber Cement Panel
2B, 2C
- Pre-Finished CMU
3A
- Channel Glass System
6D, 8A
- Storefront System
6C

BHMP: 20'-10"

BHMP: 20'-10"

I Street SW



KEY PLAN

BUILDING MATERIALS
EAST ELEVATION - FOURTH STREET SW



WESTMINSTER CHURCH LIVING
400 I STREET SW, WASHINGTON DC

PUD & ZONING MAP
AMENDMENT SUPPLEMENTAL
PREHEARING SUBMISSION
MARCH 23, 2021

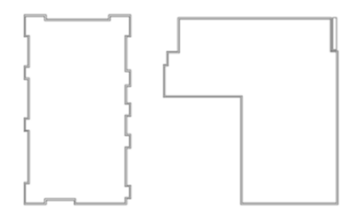
A-4.2



BHMP: 20'-10" BHMP: 20'-10"

Makemie PL SW

Park and 4th Street



KEY PLAN

Equipment Screen 8H
 Storefront System 6C

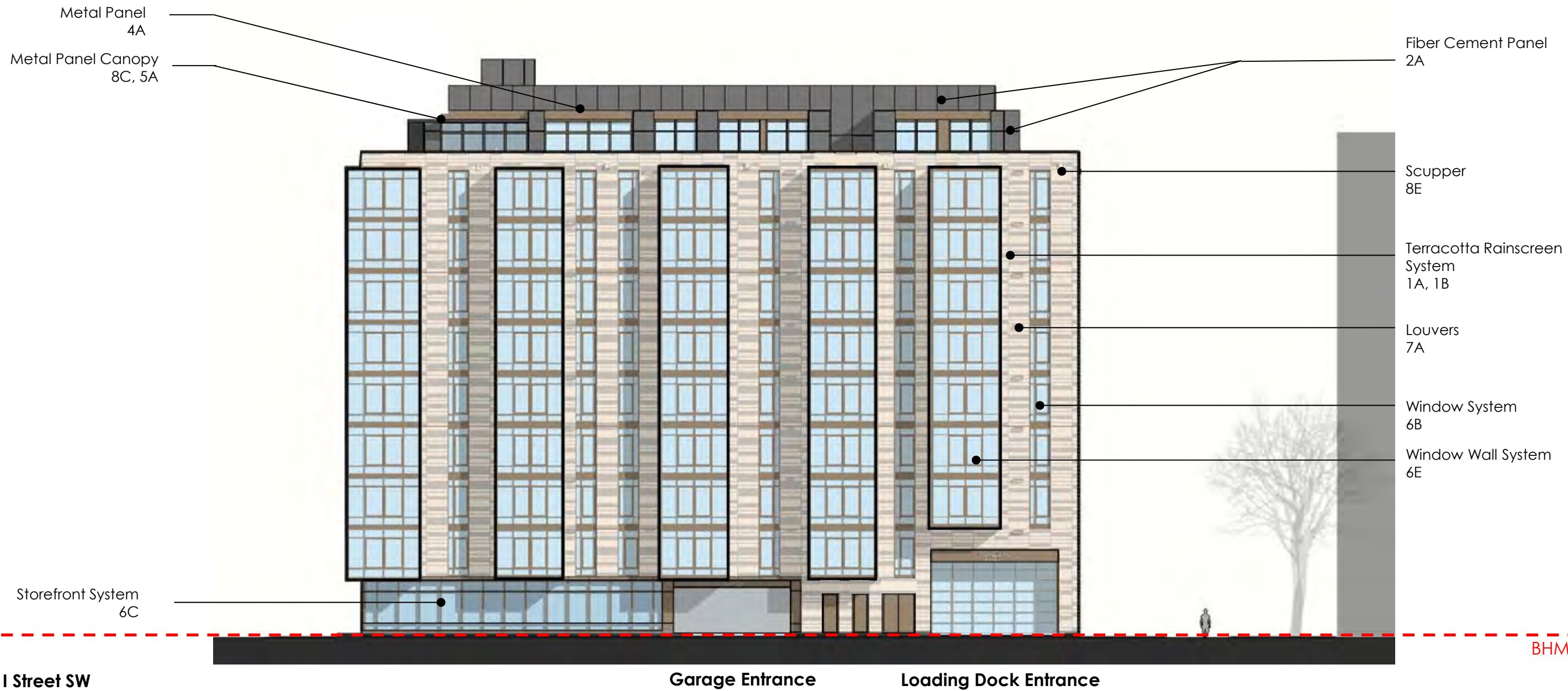
BUILDING MATERIALS SOUTH ELEVATION



WESTMINSTER CHURCH LIVING | 400 I STREET SW, WASHINGTON DC

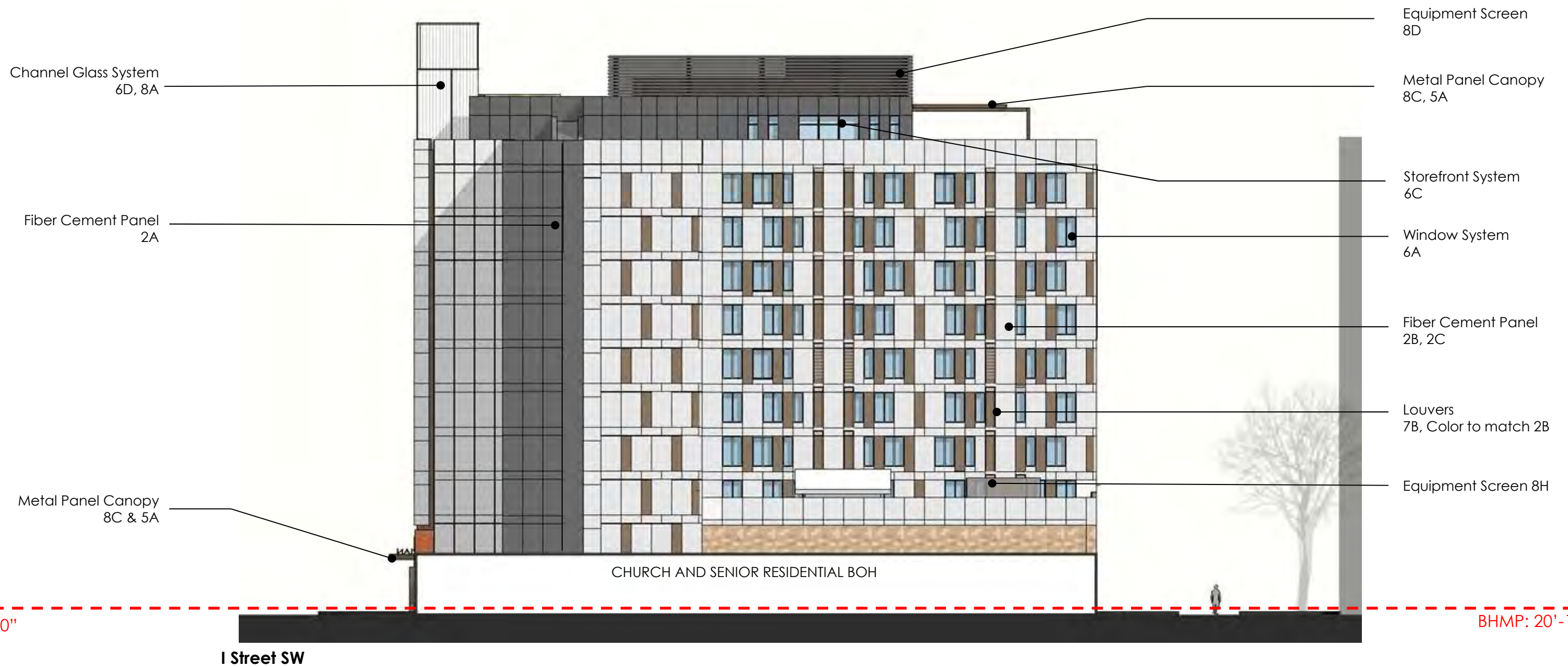
PUD & ZONING MAP
 AMENDMENT SUPPLEMENTAL
 PREHEARING SUBMISSION
 MARCH 23, 2021

A-4.3



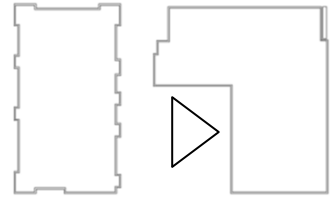
KEY PLAN

BUILDING MATERIALS
WEST ELEVATION - MAKEMIE PLACE



CHURCH AND SENIOR RESIDENTIAL BOH

I Street SW



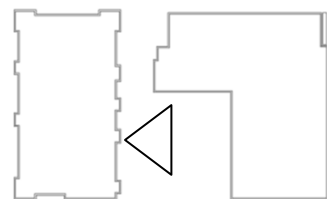
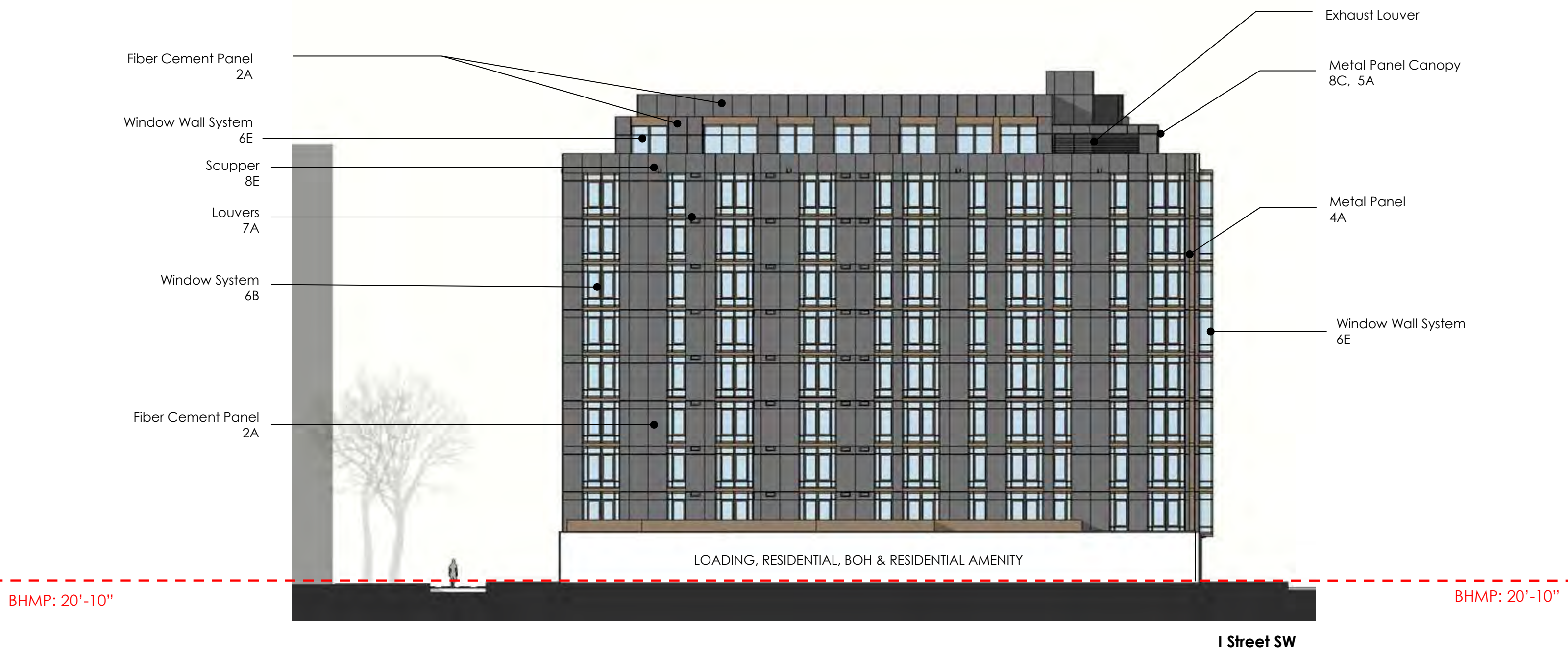
BUILDING MATERIALS
WEST BUILDING ELEVATION – SENIOR RESIDENTIAL COURTYARD



WESTMINSTER CHURCH LIVING | 400 I STREET SW, WASHINGTON DC

PUD & ZONING MAP
AMENDMENT SUPPLEMENTAL
PREHEARING SUBMISSION
MARCH 23, 2021

A-4.5



BUILDING MATERIALS
EAST BUILDING ELEVATION – RESIDENTIAL COURTYARD



ENLARGED ELEVATION
I STREET SW



Residential Entrance

ENLARGED ELEVATIONS
I STREET





- Equipment Screen 8D
- Fiber Cement Panel 2A
- Vinyl Window System 6A
- Louvers 7B
- Vinyl Window System 6A
- Fiber Cement Panel 2B
- Fiber Cement Panel 2C



- Pre- Finished CMU 3A
- Metal Panel System with Backlighting 4A
- Channel Glass System 6D
- Metal Panel System with Backlighting 4A

- Aluminum Storefront System 6C



- Pre-finished Metal Signage With Backlighting 8F
- Metal Panel Canopy 8C
- Metal Panel 4B

ENLARGED ELEVATIONS
FOURTH STREET SW



Aluminum Storefront System
6C

Fiber Cement Panel
2B

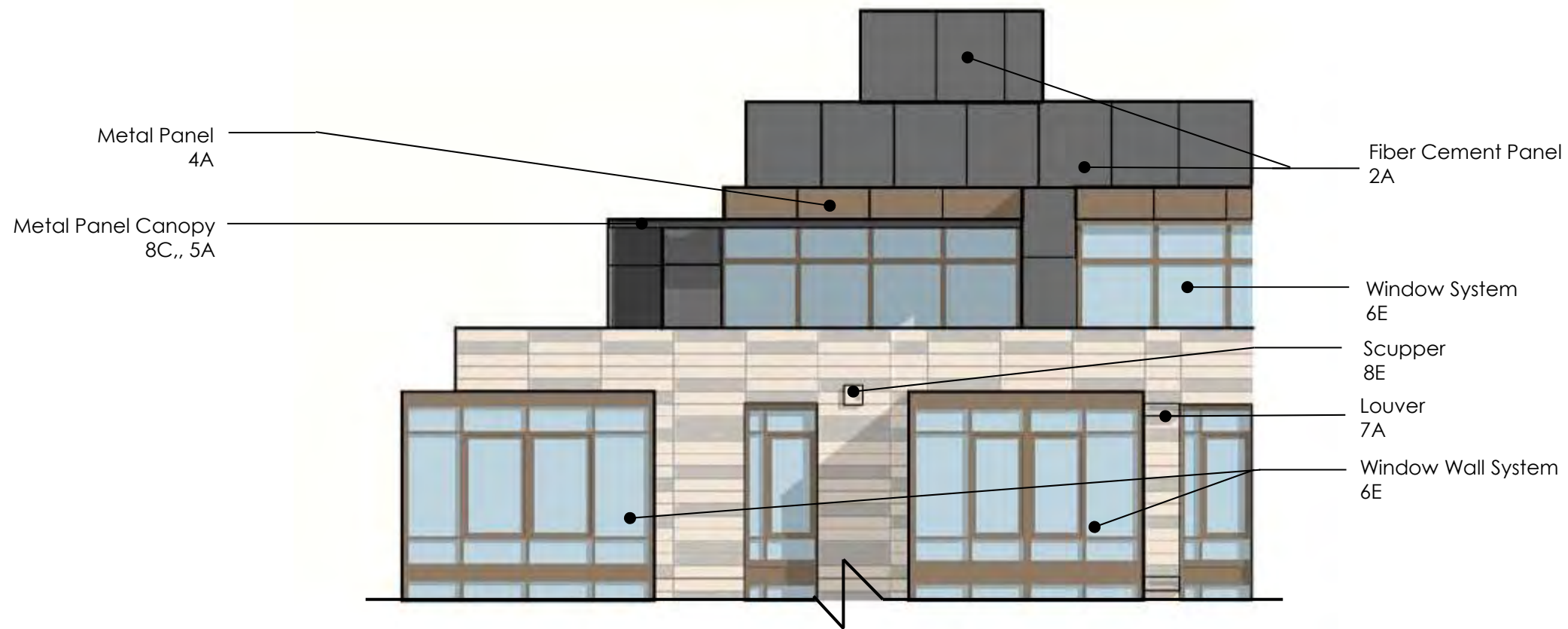
Exhaust Louver

Pre- Finished CMU
3A

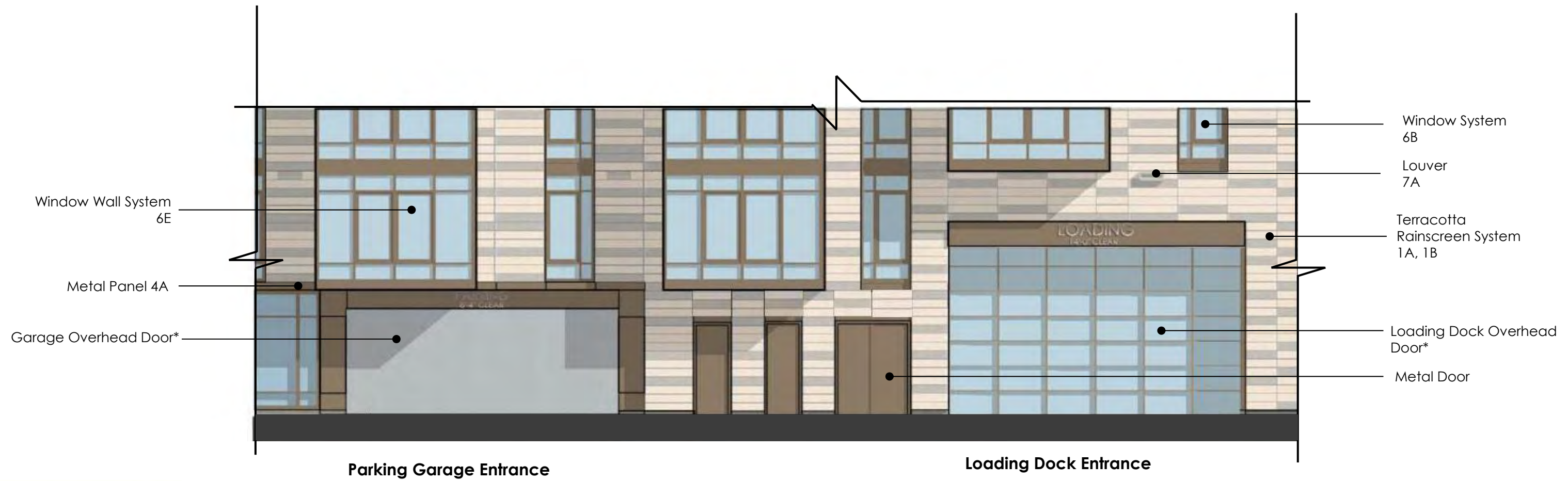
Aluminum Window System
6B



ENLARGED ELEVATIONS
CHURCH SOUTHEAST



ENLARGED ELEVATIONS
MAKEMIE PLACE



* Refer to sheet A6.2 for examples of door materials



ENLARGED ELEVATIONS
MAKEMIE PLACE



THE MODERN ON M
M STREET



DCRA BUILDING
4TH STREET

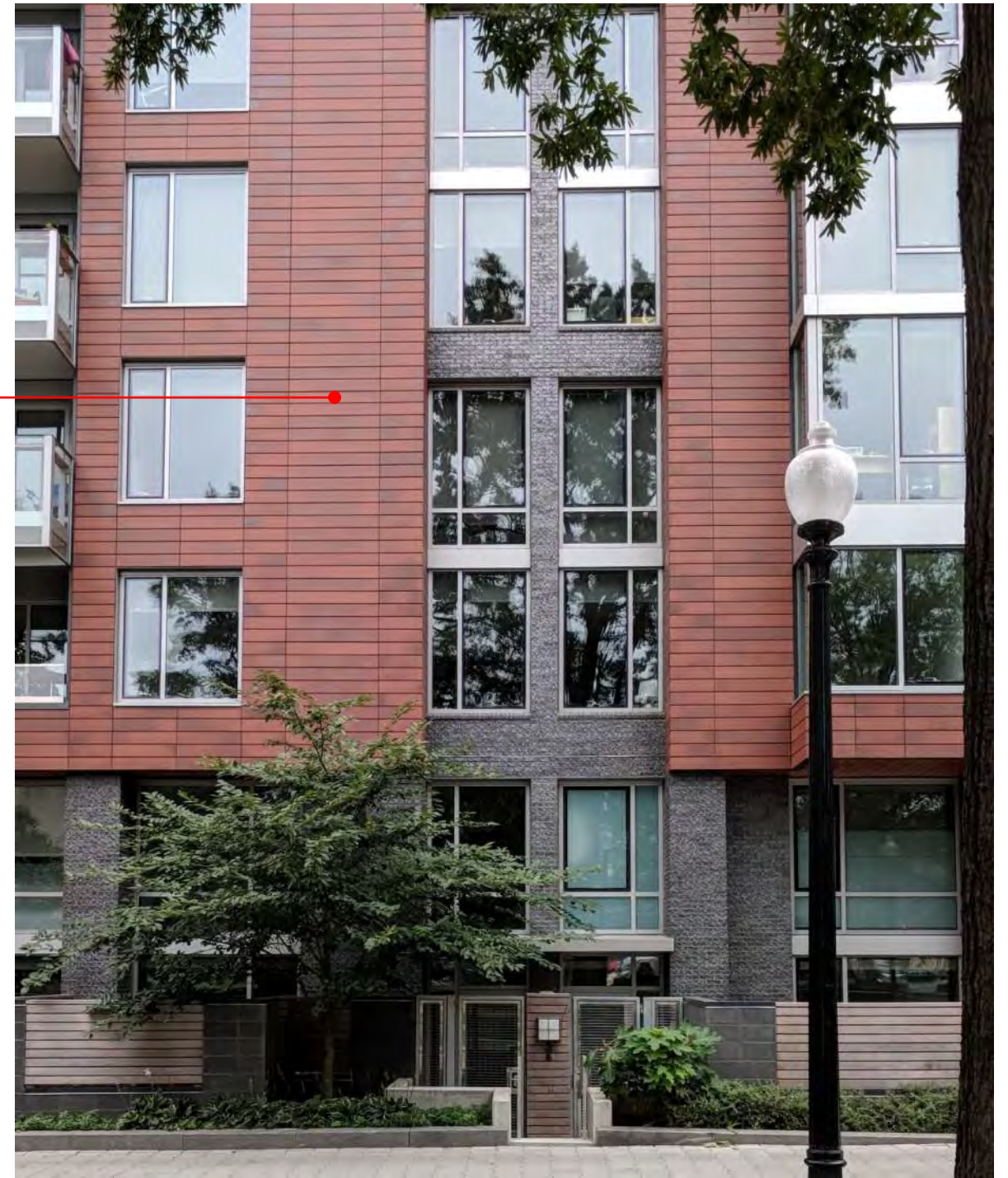
TERRACOTTA SYSTEM
FIBER CEMENT PANEL SYSTEM



THE MODERN ON M
M STREET

TERRACOTTA SYSTEM

TERRACOTTA SYSTEM



ELIOT ON 4TH
4TH STREET

MATERIAL PRECEDENTS