

WESTMINSTER CHURCH LIVING

400 I STREET SW
WASHINGTON, DC
SQUARE 499, LOT 52

APPLICANT'S POST HEARING SUBMISSION

OCTOBER 15, 2021



COVER SHEET



DC

DRAWING INDEX

A-CS	COVER SHEET
A-4.0A	EXTERIOR MATERIAL SAMPLES (REVISED)
A.4.1	BUILDING MATERIALS - NORTH ELEVATION - I STREET SW
A-4.2	BUILDING MATERIALS - WEST ELEVATION - FOURTH STREET SW
A-4.3	BUILDING MATERIALS - SOUTH ELEVATION
A-11.0	PRE-FINISHED CMU PROJECT EXAMPLES
A-11.1	EXAMPLE PROJECTS WITH LIGHT COLORED EXTERIOR MATERIAL
A-11.2	TRANSLUCENT CHANNEL GLASS MATERIAL PRECEDENTS
A-11.3	EXAMPLE PROJECT WITH BACKLIT GLAZING SYSTEM
A-11.4	LIGHTS IN AN URBAN SETTING
A-11.5	LIGHTS IN AN URBAN SETTING



EXTERIOR MATERIAL SAMPLES



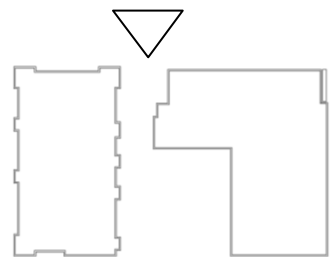
Park and 4th Street

Church Entrance

Senior Residential Entrance

Residential Entrance

Makemie PL SW



KEY PLAN

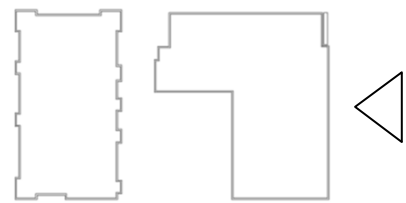
BUILDING MATERIALS
NORTH ELEVATION - I STREET SW



WESTMINSTER CHURCH LIVING |
400 I STREET SW, WASHINGTON DC

APPLICANT'S POST HEARING
SUBMISSION |
OCTOBER 15, 2021

A-4.1



KEY PLAN

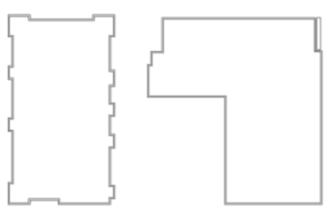
BUILDING MATERIALS
EAST ELEVATION - FOURTH STREET SW



BHMP: 20'-10" BHMP: 20'-10"

Makemie PL SW

Park and 4th Street



KEY PLAN

Equipment Screen 8H
Storefront System 6C

BUILDING MATERIALS SOUTH ELEVATION

A-4.3



DUNBAR HIGH SCHOOL *
WASHINGTON, DC

** SIMILAR PRODUCT FINISH TO PROPOSED PREFINISHED CMU*



PROPOSED PREFINISHED CMU
ARRISCRAFT RENAISSANCE CMU; LARGE FORMAT SIZE: 12" X 24"
COLOR: SANDRIFT

PREFINISHED CMU PROJECT EXAMPLES



HOLY CROSS HOSPITAL *
GERMANTOWN, MD



**SQUARE 50 APARTMENTS
WASHINGTON, DC**



**CAPITOL VISTA
WASHINGTON, DC**



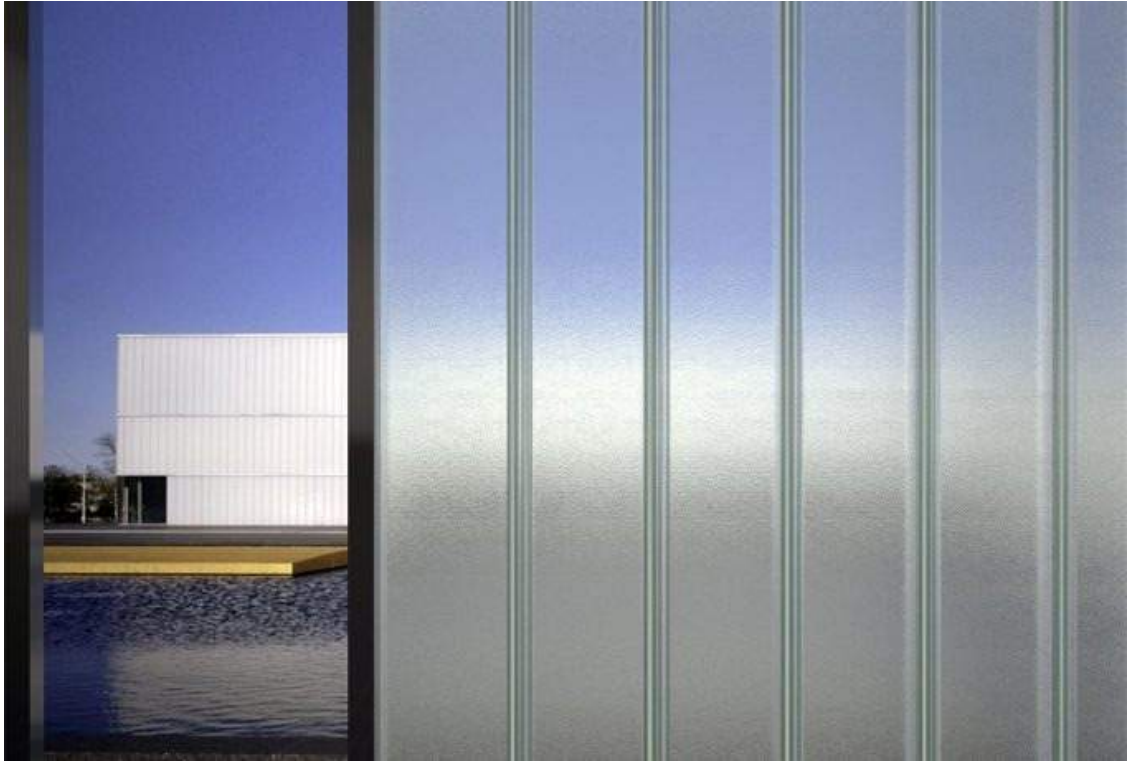
**GIRARD STREET APARTMENTS
WASHINGTON, DC**

PROPOSED FIBER CEMENT PANELS ARE HIGH DENSITY PANELS WITH 15 YEAR WARRANTY FOR THE PANEL COLOR. PANELS ARE DESIGNED TO BE RESILIENT AGAINST MOISTURE, DIRT, WEAR AND TEAR. ADDITIONALLY THEY ARE SURFACE TREATED TO RESIST MOLD AND FUNGI FROM DEVELOPING.

WHILE THE PANELS WILL NOT REQUIRE ANNUAL CLEANING DUE TO THESE INHERENT CHARACTERISTICS, ANY VISIBLE STAINS CAN BE ADDRESSED AS PART OF REGULAR BUILDING MAINTENANCE.

CONSTRUCTION DOCUMENTS WILL INCLUDE DETAILS THAT WILL HELP PREVENT DIRT FROM STREAKING THE FACE OF PANELS.

EXAMPLE PROJECTS WITH LIGHT COLORED EXTERIOR MATERIAL



EXAMPLE CHANNEL GLASS MATERIAL AND THE VISUAL DIFFUSION



EXAMPLE CONTINOUS BACKLIT CHANNEL GLASS MATERIAL
(FC LEVEL OF LIGHTING IS UNKNOWN)

WE ENVISION EVENLY SPACED LOW AMBIENT LIGHTING FOR THE CHURCH VERTICAL ELEMENT

TRANSLUCENT CHANNEL GLASS MATERIAL PRECEDENTS



TRANSLUCENT CHANNEL GLASS
WITH BACKLIGHTING AT NIGHT
APPROXIMATELY 15 FC

VISION GLASS

**DESIGN OF CORNER ELEMENT
PROPOSES 5 FC.
1 FC = APPROX. 10 LUMENS.**

A STANDARD LUMEN READING
FOR A STANDARD KITCHEN IS
5,000 – 10,000 LUMENS.

**MONTGOMERY COUNTY CIRCUIT COURT
ROCKVILLE, MD**

EXAMPLE PROJECT WITH BACKLIT GLAZING SYSTEM

LIGHTS IN AN URBAN SETTING



NEARBY OFFICES/ 4TH STREET CORRIDOR: 40 FC

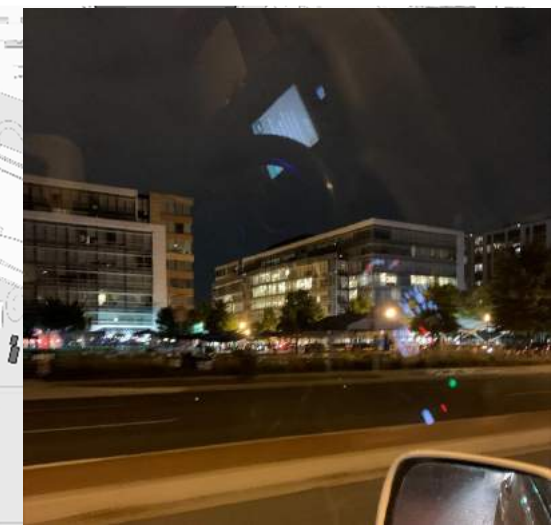
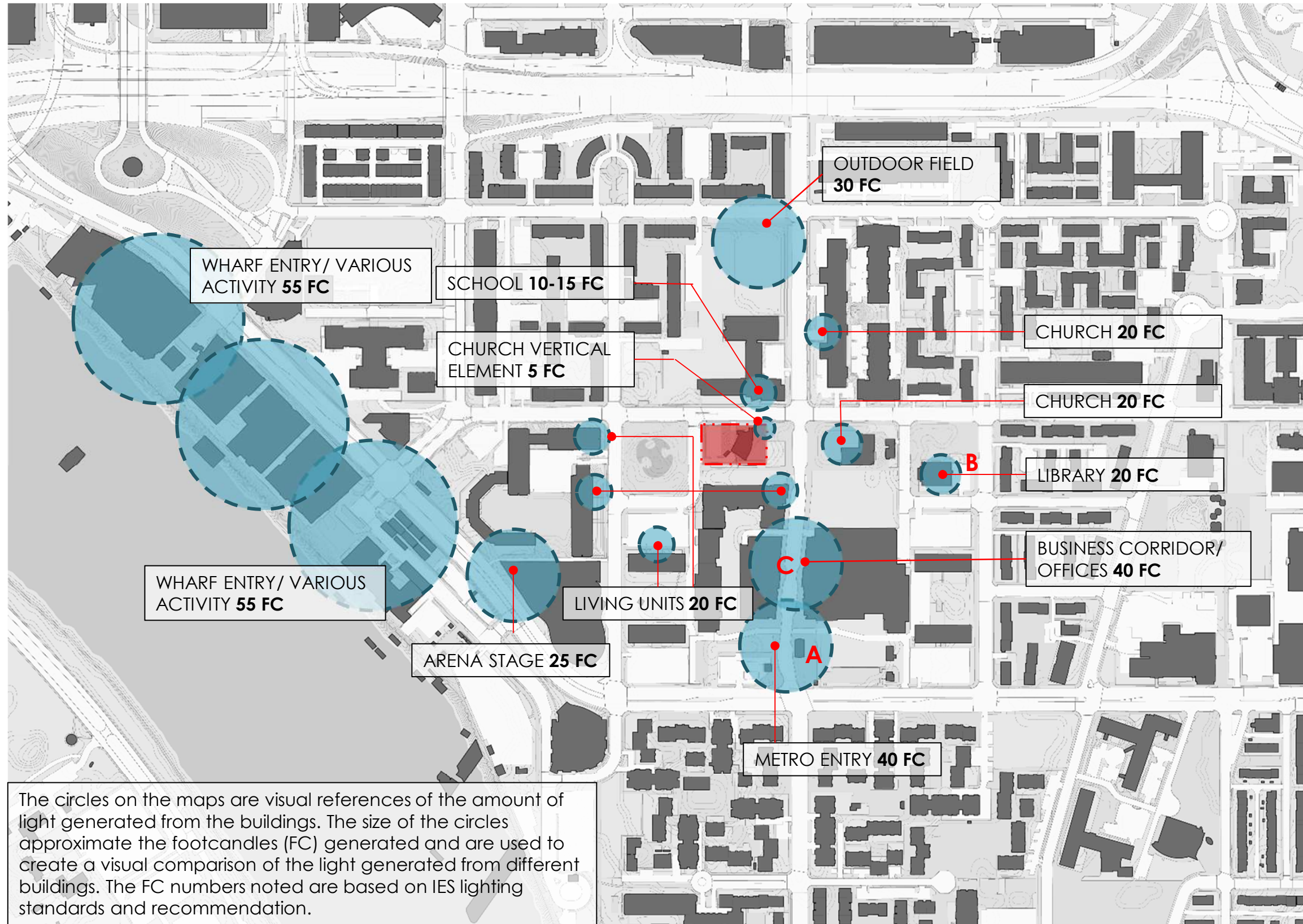
CHURCH COMMUNITY SPACE FEATURE: 20-40 FC

STREETLIGHTS: APPROX 2.4 FC EACH

OFFICE SPACE: 30-50 FC

SEE MAP ON NEXT PAGE FOR SITE IN BROADER CONTEXT

LIGHTS IN AN URBAN SETTING



A. METRO ENTRY



B. SOUTHWEST LIBRARY



C. DCRA ENTRY

The circles on the maps are visual references of the amount of light generated from the buildings. The size of the circles approximate the footcandles (FC) generated and are used to create a visual comparison of the light generated from different buildings. The FC numbers noted are based on IES lighting standards and recommendation.

LIGHTS IN AN URBAN SETTING

