

CIVIL

GENERAL CONSTRUCTION NOTES

- TWO-FOOT CONTOUR DATA BASED ON A SURVEY PERFORMED BY CAS ENGINEERING, DATED AUGUST, 2017, AND UPDATED IN OCTOBER/NOVEMBER, 2019.
- BOUNDARY INFORMATION BASED ON A SURVEY PERFORMED BY CAS ENGINEERING, DATED AUGUST, 2017.
- ZONING: PDR-4
- TOTAL LOT AREA: TOTAL AREA = 127,499 SQUARE FEET (2.927 ACRES)
(SEE BREAKDOWN ON EXISTING CONDITIONS/DEMOLITION PLAN)
- PROJECT IS WITHIN FLOOD ZONES "AE" (BASE FLOOD ELEVATIONS DETERMINED) AND "X" (AREAS DETERMINED TO BE OUTSIDE THE 0.2% ANNUAL CHANCE FLOODPLAIN) AS PER FEMA FLOOD INSURANCE RATE MAP PANEL No. 1100010038C.
- FINAL GAS, TELEPHONE AND ELECTRIC ALIGNMENT SUBJECT TO UTILITY COMPANY APPROVAL.
- EX. WATER AND SEWER LINES TO BE "TEST -PITTED" PRIOR TO CONSTRUCTION. PROPOSED WATER AND SEWER TO BE ADJUSTED IN LINE AND GRADE ACCORDINGLY.
- ANY NECESSARY TREE PROTECTION MEASURES, FOR ON-SITE OR OFF-SITE TREES, ARE TO BE ADDRESSED BY OTHERS.
- THE CONTRACTOR SHALL HAND DIG TEST PITS AT ALL UTILITY CROSSINGS AND CONNECTING POINTS TO DETERMINE THE EXACT LOCATION AND DEPTH WELL IN ADVANCE OF CONSTRUCTION.
- D.C. STANDARD DETAILS WHERE SHOWN ARE FOR GENERAL INFORMATION ONLY. THE CONTRACTOR SHALL OBTAIN THE MOST CURRENT APPLICABLE D.C. DETAILS AND STANDARDS AND PERFORM CONSTRUCTION ACCORDINGLY.
- FOR FIELD LOCATION AND ABANDONMENT / REMOVAL OF GAS MAINS AND SERVICE CONNECTIONS, CONTRACTOR SHALL NOTIFY WASHINGTON GAS LIGHT COMPANY, (703) 750-1000, 72 HOURS PRIOR TO THE START OF ANY EXCAVATION OR CONSTRUCTION.
- CONTRACTOR SHALL CONTACT MISS UTILITY, 1-800-257-7777, 48 HOURS PRIOR TO START OF CONSTRUCTION.
- CONTRACTOR SHALL CONTACT DEPARTMENT OF PUBLIC WORKS - PUBLIC SPACE MAINTENANCE ADMINISTRATION, 48 HOURS PRIOR TO START OF CONSTRUCTION, AT (202) 645-7050.
- THE CONTRACTOR SHALL BE RESPONSIBLE FOR REPAIRING, REPLACING AND/OR RESTORING ANY AND ALL UTILITY SERVICE CONNECTIONS DISTURBED DURING CONSTRUCTION.
- CONTRACTOR IS TO VERIFY FIELD CONDITIONS PRIOR TO AND DURING CONSTRUCTION AND NOTIFY CAS ENGINEERING AT (301) 607-8031 IMMEDIATELY OF ANY DISCREPANCIES BETWEEN ACTUAL FIELD CONDITIONS AND THE APPROVED PLANS.
- CONTRACTOR TO PATCH ROADWAY (PAVEMENT/ASPHALT) AT ALL LOCATIONS WHERE UTILITY WORK OCCURS. CONTRACTOR TO MILL AND OVERLAY ASPHALT AS NECESSARY OR REQUIRED BY DDOT.
- THE CONTRACTOR SHALL PERFORM ALL CONSTRUCTION IN PUBLIC SPACE IN ACCORDANCE WITH D.C. DEPARTMENT OF TRANSPORTATION STANDARD SPECIFICATIONS FOR HIGHWAYS AND STRUCTURES, LATEST EDITION. THE CONTRACTOR SHALL OBTAIN SAID SPECIFICATIONS.
- CONTRACTOR SHALL OBTAIN ALL NECESSARY PERMITS PRIOR TO PROCEEDING WITH DEMOLITION OF EXISTING IMPROVEMENTS.
- THE CONTRACTOR SHALL VERIFY THE ACTIVE/INACTIVE STATUS OF ANY EXISTING UTILITIES ENCOUNTERED ON SITE AND ABANDON OR RELOCATE AS APPROPRIATE. ABANDONMENT SHALL BE IN ACCORDANCE WITH DC WATER STANDARDS AND DETAILS.

SITE CONSTRUCTION NOTES

- PROPOSED UTILITY LOCATIONS SUBJECT TO FIELD MODIFICATION AND UTILITY COMPANY APPROVAL.
- CONTRACTOR TO ADJUST ALL EXISTING UTILITY TOPS (I.E. CLEANOUTS, MANHOLES, VALVE COVERS, ETC.) TO FINAL GRADE WHERE NECESSARY.
- CONTRACTOR TO COORDINATE ABANDONMENT OF ALL EXISTING UTILITIES AS NECESSARY.
- CONTRACTOR TO COORDINATE ON-SITE UTILITY CROSSINGS TO ENSURE ADEQUATE SEPARATION AT INTERSECTIONS.
- TEST PIT ALL UTILITY CROSSINGS PRIOR TO START OF CONSTRUCTION, ANY FIELD MODIFICATION TO BE COORDINATED WITH APPROPRIATE UTILITY AND/OR DC INSPECTOR.
- PROPOSED RETAINING WALLS SHOWN ARE TO BE DESIGNED BY OTHERS, TYPICAL.
- FOR FINAL LANDSCAPE/HARDSCAPE DETAILS, SPECIFICATIONS, ELEVATIONS, AND DIMENSIONS SEE LANDSCAPE PLANS, POOL PLANS, OR ARCHITECTURAL PLANS, AS APPROPRIATE.
- FOR TREE PROTECTION MEASURES SEE PLANS AND REPORTS BY OTHERS AS APPLICABLE.
- CONTRACTOR TO MAINTAIN DRAINAGE FACILITIES ON AND THROUGH THE SITE AT ALL TIMES DURING CONSTRUCTION. UTILIZE TEMPORARY FACILITIES/FEATURES AND/OR CONNECTIONS AS NECESSARY TO MAINTAIN POSITIVE DRAINAGE.
- CONTRACTOR TO COMPLETE SITE GRADING AND PAVING TO ENSURE POSITIVE DRAINAGE TO ALL INLETS OR NATURAL DRAINAGE COURSES TO PREVENT PONDING AND THE CREATION OF LOW SPOTS.
- CONTRACTOR TO REVIEW TIE IN POINTS WITH EXISTING PAVING AND GRADING WHERE PROPOSED ON AND ADJACENT TO PROJECT SITE, ADJUST WITH TRANSITIONS AND COORDINATE WITH CAS ENGINEERING AS APPROPRIATE.
- CONTRACTOR RESPONSIBLE FOR ENSURING THAT ROUTES MEET AMERICANS WITH DISABILITIES ACT (ADA) REQUIREMENTS, WHERE REQUIRED/APPLICABLE, 5% MAXIMUM SLOPE, 2% MAXIMUM CROSS SLOPE. CONTRACTOR ALSO RESPONSIBLE FOR ENSURING THAT RAMPS MEET ADA REQUIREMENTS, WHERE REQUIRED/APPLICABLE, 8.3% MAXIMUM SLOPE AND 2% MAXIMUM CROSS SLOPE.
- CONTRACTOR TO MAINTAIN FIRE DEPARTMENT AND EMERGENCY ACCESS ROUTES TO SITE AND TO APPLICABLE APPURTENANCES (I.E. FIRE HYDRANTS) DURING CONSTRUCTION UNLESS PRIOR APPROVAL IS OBTAINED FROM APPROPRIATE DISTRICT AGENCIES.

MISS UTILITY

FOR LOCATION OF UTILITIES, CALL "MISS UTILITY" AT 1-800-257-7777, OR LOG ON TO WWW.MISSUTILITY.NET/ITC 48 HOURS IN ADVANCE OF ANY WORK IN THIS VICINITY. THE EXCAVATOR MUST NOTIFY ALL PUBLIC UTILITY COMPANIES WITH UNDER GROUND FACILITIES IN THE AREA OF PROPOSED EXCAVATION AND HAVE THOSE FACILITIES LOCATED BY THE UTILITY COMPANIES PRIOR TO COMMENCING EXCAVATION. THE EXCAVATOR IS RESPONSIBLE FOR COMPLIANCE WITH ALL JURISDICTIONAL REQUIREMENTS.

UTILITY INFORMATION

EXISTING UNDERGROUND UTILITY LOCATIONS ARE APPROXIMATE AND MUST BE FIELD VERIFIED. UTILITY LOCATIONS ARE BASED UPON AVAILABLE RECORDS AND ARE SHOWN TO THE BEST OF OUR ABILITY.

STORM DRAIN NOTES

- ALL STORM DRAIN PIPE TO BE SCHEDULE 40 PVC OR OF HIGHER QUALITY.
- DOWNSPOUT LEADERS ORIGINATING DIRECTLY FROM DOWNSPOUTS TO BE 4" PVC (OR APPROVED EQUIVALENT), UNLESS INDICATED OTHERWISE ON PLAN.
- PROVIDE CLEANOUTS, AS SHOWN ON PLAN AT A MINIMUM, OR AS REQUIRED BY PLUMBING CODE.
- MAINTAIN MINIMUM 12" COVER OVER ALL PIPE.
- ALL STORM DRAIN UNDER DRIVEWAY OR PAVED AREAS TO BE BEDDED IN GRAVEL AND TO HAVE A MINIMUM OF 12" OF COVER, OR BE CAST IRON.
- PROPOSED STORM DRAIN PIPING TO BE AT 2.0% MINIMUM SLOPE, UNLESS OTHERWISE INDICATED. USE VERTICAL BENDS WHERE NECESSARY TO FOLLOW FINISHED GRADES.

ABBREVIATIONS LIST

(FOR REFERENCE ONLY, NOT ALL ARE USED WITHIN THIS PLAN SET)

A	AREA OF ARC	F	FIRE LINE	R	RADIUS OR PER RECORD
AASHTO	AMERICAN ASSOCIATION OF STATE HIGHWAY & TRANSPORTATION OFFICIALS	FAR	FLOOR AREA RATION	RD	REINFORCED CONCRETE PIPE
AC	ACRE	FD	FLOOR DRAIN	RENF	REINFORCED
ADJ	ADJACENT	FF	FIRST FLOOR	REQD	REQUIRED
AGGR	AGGREGATE	FG	FINISHED GRADE	RET	RETAINING
AHD	AHEAD	FL	FIRE HYDRANT	REV	REVISION
ANSI	AMERICAN NATIONAL STANDARDS INSTITUTE	FL	FLOOR LINE	RFP	ROUGH GRADING PLAN
APPROX	APPROXIMATE	FND	FOUNDATION	RMA	RESOURCE MANAGEMENT AREA
ARCH	ARCHITECTURAL	FOY	FOYER	ROM	REMOTE OUTSIDE MONITOR
ASPH	ASPHALT	FPS	FEET PER SECOND	RPA	RESOURCE PROTECTION AREA
ASTM	AMERICAN SOCIETY FOR TESTING AND MATERIALS	FS	FIRE SAFETY OR FACTOR OF SAFETY	RR	RAIL ROAD
AVE	AVENUE	FT	FOOT OR FEET	RTE	ROUTE
AWWA	AMERICAN WATER WORKS ASSOCIATION	G	GAS	R/W	RIGHT OF WAY
B	BREADTH	GAR	GARAGE	S	SOUTH OR SEWER OR SPEED OR SLOPE
BC	BACK OF CURB	GFA	GROSS FLOOR AREA	SAN	SANITARY
BF	BASEMENT FLOOR	GHC	GAS HOUSE CONNECTION	SBL	SOUTH BOUND LANE
BLDG	BUILDING	GR	GUARD RAIL OR GRATE	SCH	SCHEDULE
BLVD	BOULEVARD	GV	GAS VALVE	SCH	SIGHT DISTANCE OR STORM DRAIN
BM	BENCHMARK	H	HEAD	SDMH	STORM DRAIN MANHOLE
BMP	BEST MANAGEMENT PRACTICES (WATER QUALITY)	HC	HANDICAP	SE	SOUTHEAST
BOV	BLOW OFF VALVE	HB	HORIZONTAL BEND	SEC	SECTION
BRG	BEARING	HBL	HORIZONTAL GRADE LINE	SEW	SEWER
BRL	BUILDING RESTRICTION LINE	HORZ	HORIZONTAL	SF	SQUARE FOOT
BVCE	BEGINNING VERTICAL CURVE ELEVATION	HR	HAND RAIL	SH	SHOULDER
BVCS	BEGINNING VERTICAL CURVE STATION	HT	HEIGHT	SHC	SEWER HOUSE CONNECTION
BW	BOTTOM OF WALL	HW	HEADWATER	SMH	SEWER MANHOLE
C	CENTER CORRECTION ON VERTICAL CURVE	I	INTENSITY, RAINFALL	SP	SPACE OR SITE PLAN
C&G	CURB AND GUTTER	ID	INSIDE DIAMETER OR IDENTIFICATION	SPEC	SPECIFICATIONS
C&TV	CABLE TELEVISION	IE	INVERT ELEVATION	STA	STATION
CB	CATCH BASIN	IN	INCH	STD	STANDARD
CBR	CALIFORNIA BEARING RATIO	INV	INVERT	STK	STACK
CC	CENTER TO CENTER OF CURB FEET	IPF	IRON PIPE FOUND	STM	STORM
CFS	CUBIC FEET PER SECOND	IPS	IRON PIPE SET	STR	STRUCTURE
CGR	CURB AND GUTTER (REVERSE SLOPE)	J	JUNCTION BOX	SVN	SERVICE
CH	CHORD	JNT	JOINT	S/W	SIDEWALK
CHBR	CHORD BEARING	K	SIGHT DISTANCE COEFFICIENT	SWM	STORMWATER MANAGEMENT
CP	CAST IRON PIPE OR CAST IN PLACE	L	LENGTH	Sx	SLOPE
CL	CLASS	LAT	LATERAL	SY	SQUARE YARD
C/L	CENTER LINE	LCG	LIMITS OF CLEARING & GRADING	T	TELEPHONE OR TANGENT
CLR	CLEAR	LL	LOWER LEVEL	TB	TOP OF BANK
CM	CUBIC METERS	LL	LOWER LEVEL	TC	TOP OF CURB
CMP	CORRUGATED METAL PIPE	LOC	LOCATION	Tc	TIME OF CONCENTRATION
CMS	CUBIC METERS PER SECOND	LOS	LINE OF SIGHT	TEL	TELEPHONE
CON	RUNOFF CURVE NUMBER	LP	LOW POINT OR LIGHT POLE	TEMP	TEMPORARY
CONN	CONNECTION	LS	LOADING SPACE	TH	TEST HOLE
CONT	CONTINUOUS	L/S	LANDSCAPE AREA	TL	TRAFFIC LIGHT
C/O	CLEAN OUT	LT	LEFT	TP	TEST PIT OR TREE PROTECTION
CONC	CONCRETE	M	METER	TRANSP	TRANSPORTATION
COV	COVERED	MAP	MAPLE	TW	TOP OF WALL OR TAIL WATER
CS	CURB STOP	MAX	MAXIMUM	TYP	TYPICAL
C/S	COMBINED SEWER	MARY	MARYLAND	U	UNKNOWN
CTR	CENTER	MECH	MECHANICAL	UG	UNDERGROUND
CY	CUBIC YARD	METRO	METROPOLITAN	U/G	UNDERGROUND
D	DRAIN	MH	MANHOLE	UGT	UNDERGROUND TELEPHONE
DA	DRAINAGE AREA	MI	MILE	UL	UNDERGROUND CABLE
DB	DEED BOOK	MIN	MINIMUM	UP	UTILITY POLE
DC	DISTRICT OF COLUMBIA	MISC	MISCELLANEOUS	USGS	US GEOLOGICAL SURVEY
DDOT	DISTRICT DEPARTMENT OF TRANSPORTATION	MON	MONUMENT	V	VOLUME
DET	DETAIL	MPH	MILES PER HOUR	V, VOL	VELOCITY
DIA	DIAMETER	MSHA	MARYLAND STATE HIGHWAY ADMINISTRATION	V, VEL	VELOCITY
DIP	DUCTILE IRON PIPE	MSL	MEAN SEA LEVEL	VB	VERTICAL BEND
DI	DROP INLET	N	NORTH	VC	VERTICAL CURVE
DIST	DISTANCE	N/A	NOT APPLICABLE	VOOT	VIA DEPARTMENT OF TRANSPORTATION
DL	DOMESTIC LINE	NBL	NORTH BOUND LANE	VERT	VERTICAL
DM	DROP MANHOLE	N/E	NORTH EAST	VF	VERTICAL FOOT
DOH	DEPARTMENT OF HEALTH	N/F	NORTH FORMERLY	W	WEST OR WATER OR WEIGHT OR WIDTH
DOM	DOMESTIC	NFA	NET FLOOR AREA	W/	WITH
DR	DRIVE	NW	NORTH WEST	WBL	WEST BOUND LANE
DRN	DRAINAGE	NW	NORTH WEST	WHC	WATER HOUSE CONNECTION
DU	DWELLING UNITS	OC	ON CENTER	WL	WATER LINE
DWG	DRAWING	OBJ	OBJECT	WM	WATER METER
D/S	DOWN SPOUT	OD	OUTSIDE DIAMETER	WGA	WATER QUALITY IMPACT ASSESSMENT
D/W	DRIVEWAY	OH	OVERHANG	W/S	WRAPPED STEEL
E	EAST OR ELECTRIC OR RATE OF SUPER ELEVATION	O/H	OVERHEAD	WV	WATER VALVE
EA	EACH	O/H	OVERHEAD CABLE	XROSS	CROSS SECTION
EAL	EAST BOUND LANE	OHE	OVERHEAD ELECTRIC	XF	TRANSFORMER
EC	EROSION CONTROL	OHT	OVERHEAD TELEPHONE		
EG	EDGE OF GUTTER	P	PER PLAN OR PERMETER		
EGL	ENERGY LINE GRADIENT	P&P	PLAN & PROFILE		
EHC	ELECTRIC HOUSE CONNECTION	P/C	POINT OF CURVATURE		
EL	ELEVATION	PCC	POINT OF COMPOUND CURVE		
ELEC	ELECTRIC	PCTC	POINT OF CURVATURE TOP OF CURB		
ELEV	ELEVATION	PCEP	POINT OF CURVE EDGE OF PAVEMENT		
ENGR	ENGINEER	PFM	PUBLIC FACILITIES MANUAL		
ENT	ENTRANCE	PG	PAGE		
EP	EDGE OF PAVEMENT	PGL	POINT OF GRADE LINE		
EQUIP	EQUIPMENT	PI	POINT OF INTERSECTION		
ES	END SECTION	PL	PROPERTY LINE		
ESMT	EASEMENT	PL	PROPERTY LINE		
ETD	EXISTING TO BE DEMOLISHED	PP	POWER POLE		
ETR	EXISTING TO BE REMOVED	PRC	POINT OF REVERSE CURB		
ETRL	EXISTING TO BE RELOCATED	PRELIM	PRELIMINARY		
ETRP	EXISTING TO BE REPLACED	PROP	PROPOSED		
EVCE	ENDING VERTICAL CURVE ELEVATION	PT	POINT OF TANGENCY		
EVCS	ENDING VERTICAL CURVE STATION	PVC	POINT OF VERTICAL CURVE OR POLYVINYL CHLORIDE PIPE		
EW	END WALL	PVI	POINT OF VERTICAL INTERSECTION		
EX	EXISTING	PVMT	PAVEMENT		
EQC	ENVIRONMENTAL QUALITY CORRIDOR	PVRC	POINT OF VERTICAL REVERSE CURVE		
		PVT	POINT OF VERTICAL TANGENT		
		Q	AMOUNT OF RUNOFF (FLOW RATE)		

VICINITY MAP

ADC MAP 5529, GRID C-10, NOT TO SCALE



LEGEND

EXISTING FEATURES	PROPOSED FEATURES	SEDIMENT CONTROL FEATURES

UTILITY GENERAL NOTES (DC WATER)

CONTRACTOR TO REFER TO DC WATER GENERAL CONSTRUCTION NOTES, MOST RECENT VERSION FOR INFORMATION REGARDING DC WATER UTILITIES. NOTES ARE AVAILABLE AT www.dwater.com/sites/default/files/DCWater_General_Construction_Notes.pdf

CIVIL SHEET INDEX

- CIVIL LEGEND AND NOTES
- EXISTING CONDITIONS / SITE DEMOLITION PLAN
- SITE DEVELOPMENT PLAN
- GRADING PLAN
- STORMWATER MANAGEMENT PLAN
- EROSION AND SEDIMENT CONTROL PLAN
- UTILITY PLAN
- FLOODPLAIN EXHIBIT



LOT AREA TABULATION

EXISTING

LOT	SQUARE	AREA (SF)	AREA (AC.)
802	1025-E	5,107	0.117
1	1048-S	40,580	0.932
801	1048-S	16,183	0.372
802	1048-S	42,424	0.974
129	RES	15,269	0.351
299	RES	7,936	0.182
TOTAL		127,499	2.927

PROPOSED

LOT	SQUARE	AREA (SF)	AREA (AC.)
1	1048-S	118,633	2.723
2	1048-S	8,866	0.204
TOTAL		127,499	2.927

SITE DEMOLITION NARRATIVE

- CONTRACTOR TO SECURE ALL NECESSARY PERMITS AND CONDUCT A PRE-CONSTRUCTION MEETING WITH THE SEDIMENT CONTROL INSPECTOR PRIOR TO THE START OF CONSTRUCTION OR ANY LAND DISTURBANCE. CALL 202-535-2240 TO SCHEDULE A PRE-CONSTRUCTION MEETING.
- INSTALL SEDIMENT CONTROL MEASURES.
- PROCEED WITH DEMOLITION ACTIVITIES. DEMOLISH EXISTING STRUCTURES WITH APPROPRIATE EQUIPMENT.
- REMOVE DEBRIS FROM SITE BY TRUCK. TEMPORARILY STABILIZE ALL DISTURBED AREAS PER DC SEDIMENT CONTROL REQUIREMENTS.
- REMOVE SEDIMENT CONTROL DEVICES AFTER ENTIRE SITE IS STABILIZED AND PERMISSION IS RECEIVED FROM THE SEDIMENT CONTROL INSPECTOR. SOME SEDIMENT CONTROL MEASURES MAY BE RETAINED TO USE FOR FUTURE CONSTRUCTION AS APPLICABLE. COORDINATE WITH DC INSPECTOR.

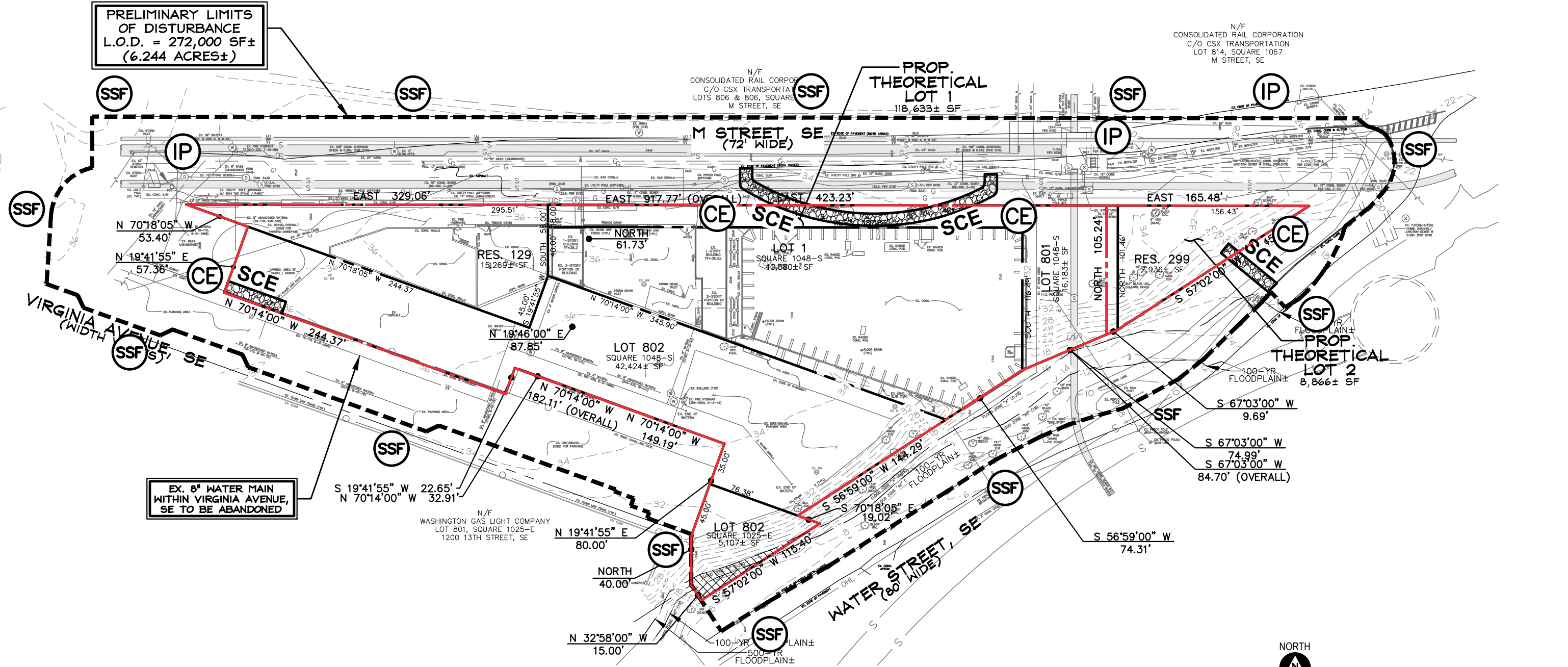
NOTE: THIS PROJECT DISTURBS OVER AN ACRE AND IS SUBJECT TO US ENVIRONMENTAL PROTECTION AGENCY (EPA) NOTICE OF INTENT FILING UNDER THE EPA'S GENERAL CONSTRUCTION PERMIT.

ALL TREES WITHIN LIMITS OF DISTURBANCE TO BE REMOVED (SUBJECT TO DDOT PERMITS, AS APPLICABLE)

CONTRACTOR TO PROTECT TREES (BRANCHES, TRUNK, ROOTS) ON NEIGHBORING LOTS THAT OVERLAP THE L.O.D. AND HERITAGE TREES ON SITE. COORDINATE WITH DDOT UFA WARD 6 ARBORIST AS APPLICABLE. CONTRACTOR TO USE A TRENCHLESS SILT FENCE METHOD AND TO HORIZONTALLY BORE OR AIR SPADE EXCAVATE FOR UTILITIES WITHIN THE CANOPY OF ANY TREE TO BE PRESERVED (INCLUDING PROTECTING TREES ON ADJACENT PROPERTIES), COORDINATE WITH DDOT WARD 6 ARBORIST AS APPLICABLE. THE DDOT WARD 6 LEAD ARBORIST IS STEVE MCKINDLEY-WARD, steve.mckindley-ward@dc.gov; (202) 527-5741.

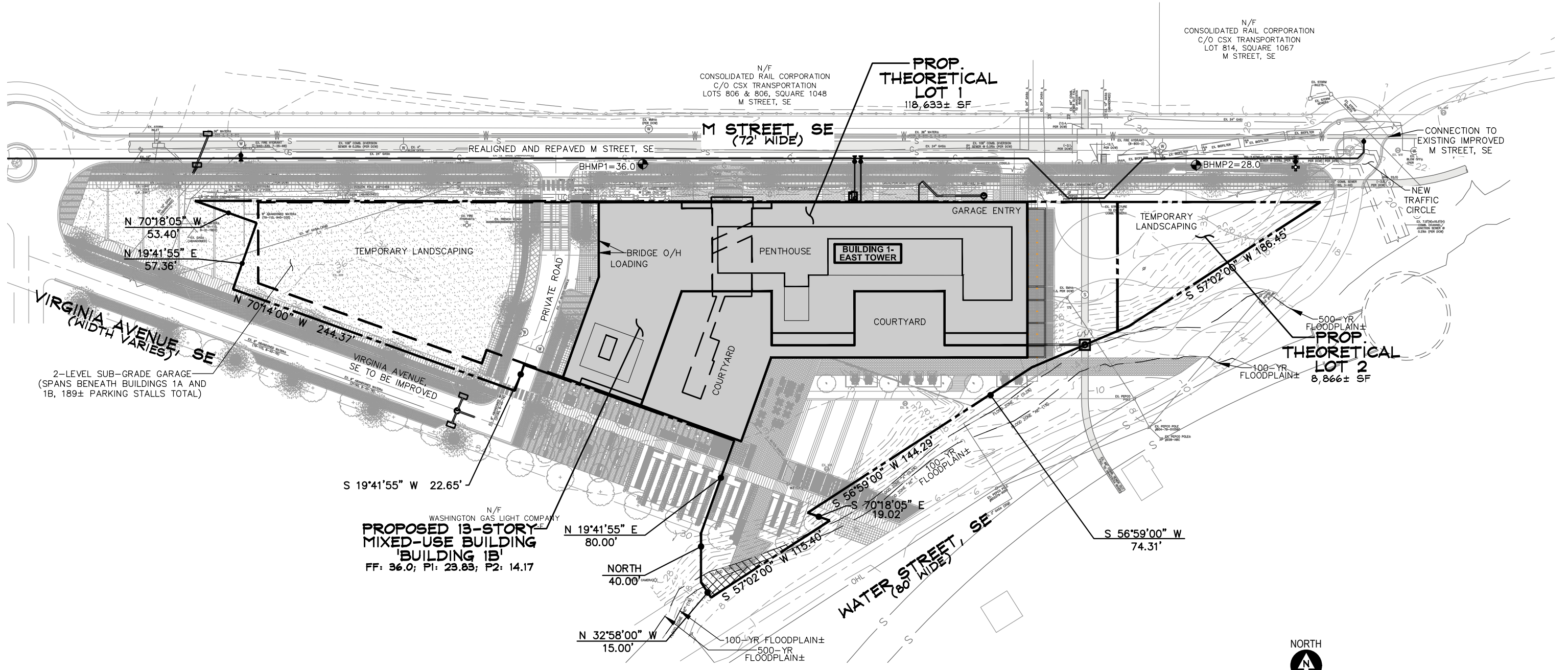
CONTRACTOR TO PROVIDE SUPER SILT FENCE, STRAW BALES OR EROSION CONTROL TUBE AROUND EXCAVATION / LIMITS OF DISTURBANCE AND PROVIDE INLET PROTECTION FOR ALL ONSITE AND ADJACENT INLETS (NOT SHOWN DUE TO SCALE)

IP CE SSF



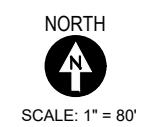
BUILDING COVERAGE/HEIGHT TABULATION

BUILDING	FOOTPRINT	NUMBER OF STORIES	MEASURE POINT	FF	BLDG. HEIGHT	% OCCUPANCY
BUILDING 1-EAST TOWER	52,178±	13	36.0 (PROP. TOP CURB)	36.0±	130'	44.8%
TOTAL SITE AREA = 127,499 SQ. FT.±; TOTAL BUILDING FOOTPRINT = 52,178 SQ. FT.±; % OCCUPANCY OVER ENTIRE SITE = 40.9%						



1333 M STREET
 SE Waterfront, Washington DC

PUD SUBMISSION
SITE DEVELOPMENT PLAN



June 5, 2020 **C.3**

P:\2000-2009\2003\03051_1333 M Street, SE\6 drawings\03051-DC_PUD-Set-Interim-3.dwg, 6/8/2020 11:43:20 AM, © 2020 CAS Engineering and CAS Engineering-DC, LLC

