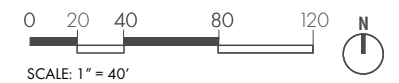




1 WEST ELEVATION
SCALE: 1:20=1'-0"

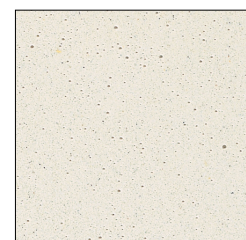


2 EAST ELEVATION
SCALE: 1:20=1'-0"

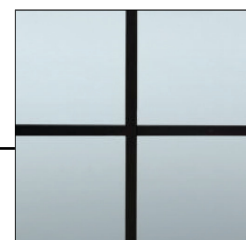




A-1 NORTH ELEVATION
SCALE: 1/8"=1'-0"



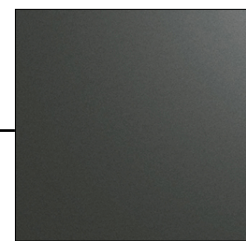
CAST STONE TRIM



THERMAL PANE
ALUMINUM
WINDOWS (TYP.)



BRICK



COMPOSITE METAL
PANEL



A-2 NORTH ELEVATION
SCALE: 1/8"=1'-0"