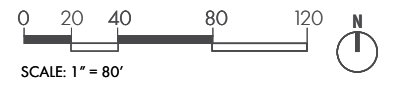
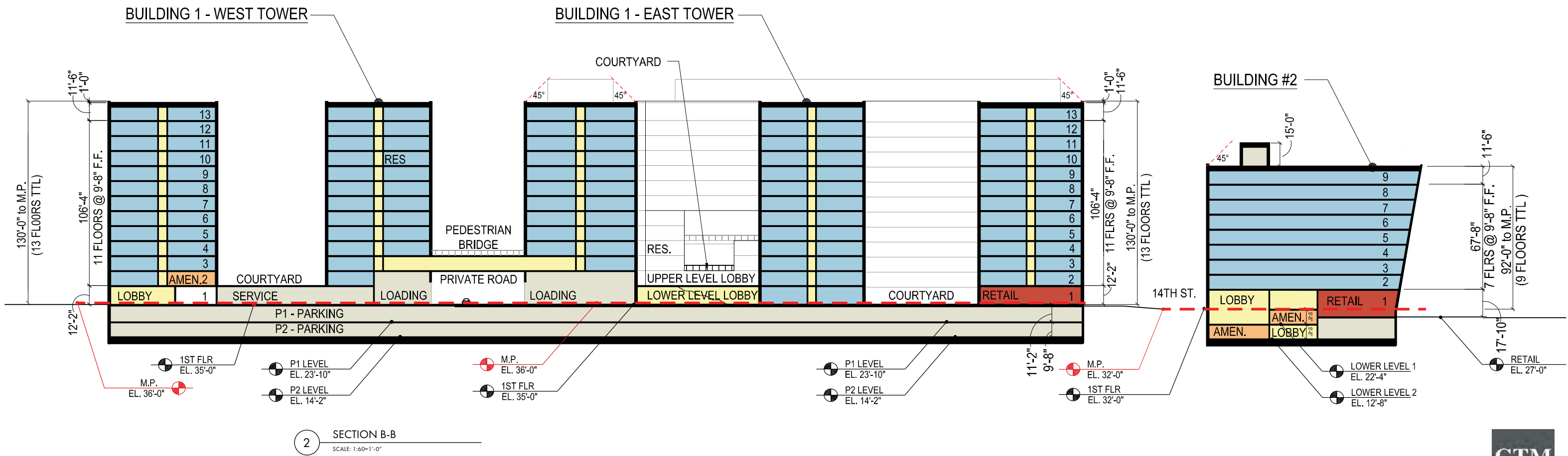
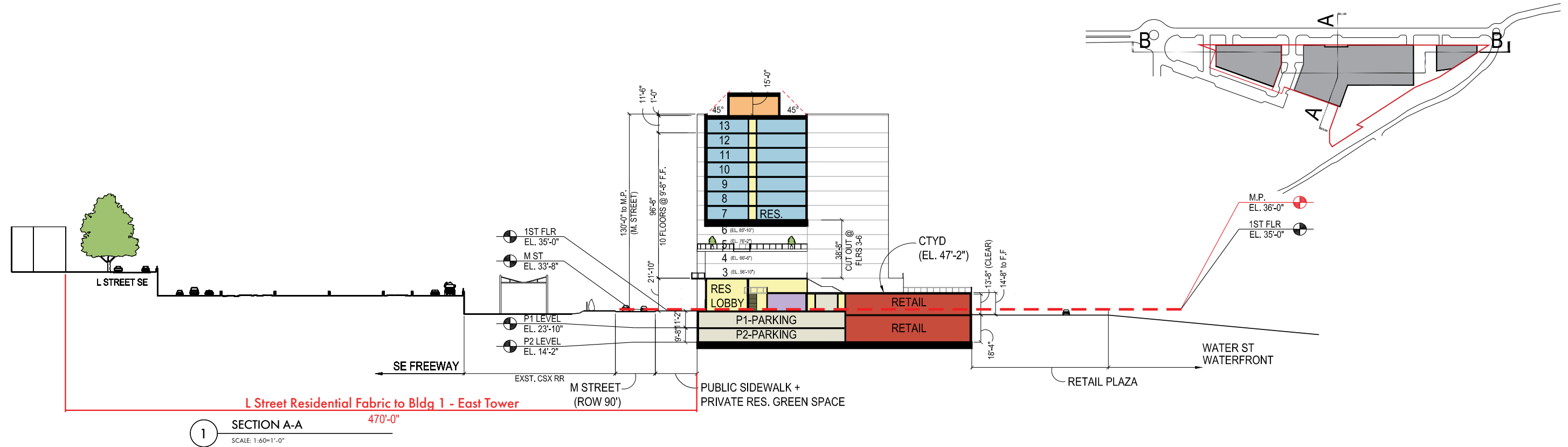
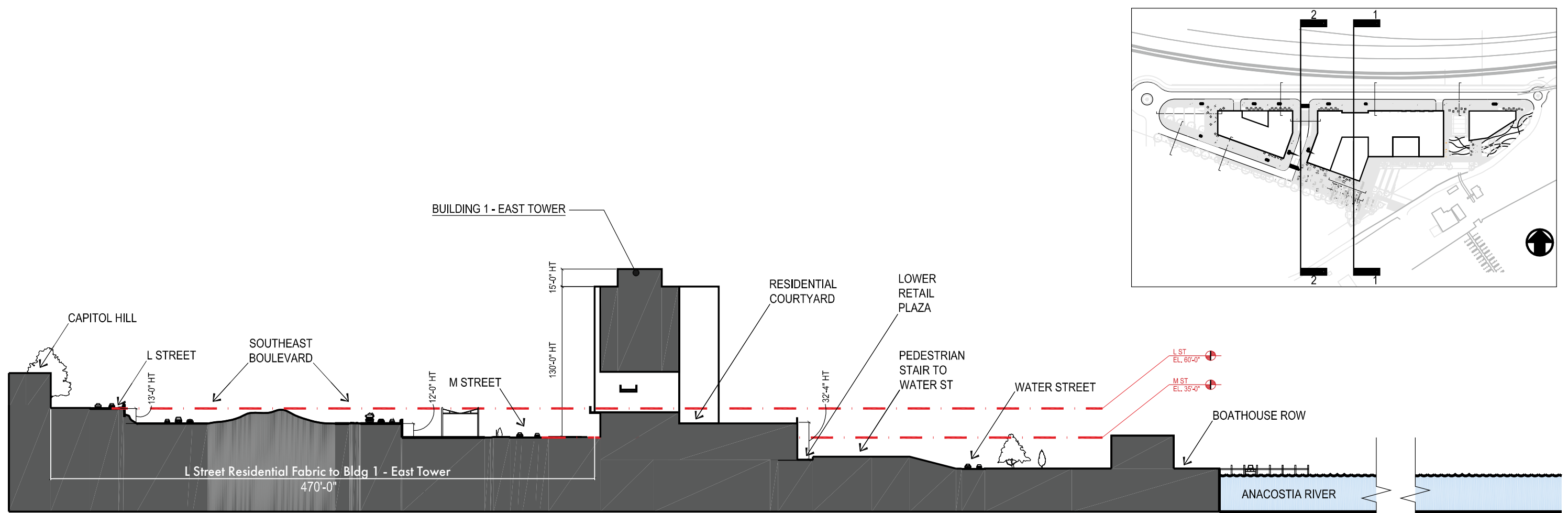


LEGEND	
<span style="display:inline-block; width:15px; height:15px; background-color:blue;"></span>	RETAIL
<span style="display:inline-block; width:15px; height:15px; background-color:lightblue;"></span>	RESIDENTIAL
<span style="display:inline-block; width:15px; height:15px; background-color:orange;"></span>	AMENITY
<span style="display:inline-block; width:15px; height:15px; background-color:purple;"></span>	ADMINISTRATION
<span style="display:inline-block; width:15px; height:15px; background-color:yellow;"></span>	CIRCULATION
<span style="display:inline-block; width:15px; height:15px; background-color:lightcoral;"></span>	CORE
<span style="display:inline-block; width:15px; height:15px; background-color:lightgreen;"></span>	SERVICE CORRIDOR
<span style="display:inline-block; width:15px; height:15px; background-color:limegreen;"></span>	COURTYARD
<span style="display:inline-block; width:15px; height:15px; background-color:lightgrey;"></span>	PARKING
<span style="display:inline-block; width:15px; height:15px; background-color:grey;"></span>	UTILITY

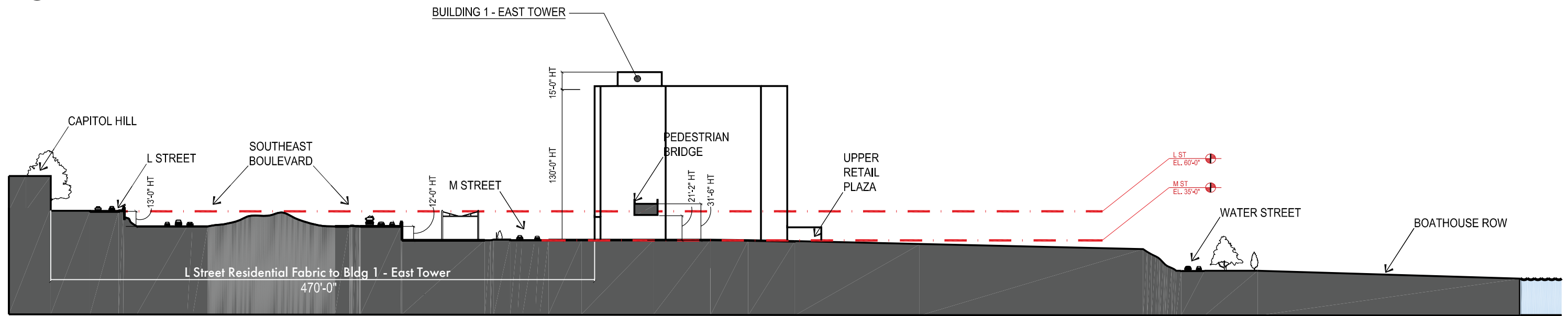
NOTE: INTERIOR LAYOUTS ON BUILDING PLANS ARE CONCEPTUAL AND SUBJECT TO CHANGE. FUTURE CHANGES TO THE LAYOUTS SHOULD NOT AFFECT THE EXTERIOR ENVELOPE OR SQUARE FOOTAGE.



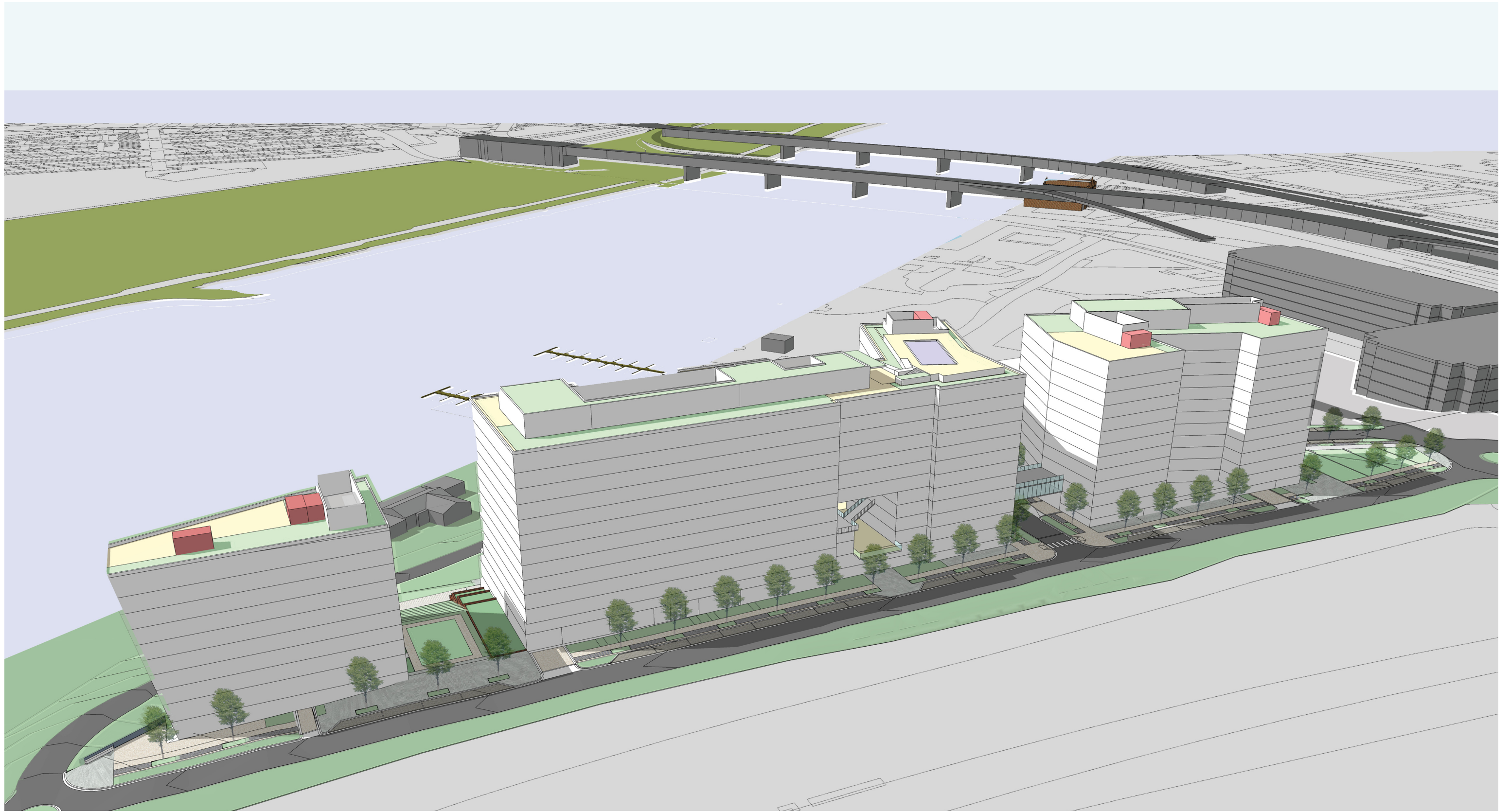




1 NORTH-SOUTH SITE SECTION  
SCALE: 1"=80'



2 NORTH-SOUTH SITE SECTION  
SCALE: 1"=80'



1333 M STREET

SE Waterfront, Washington DC

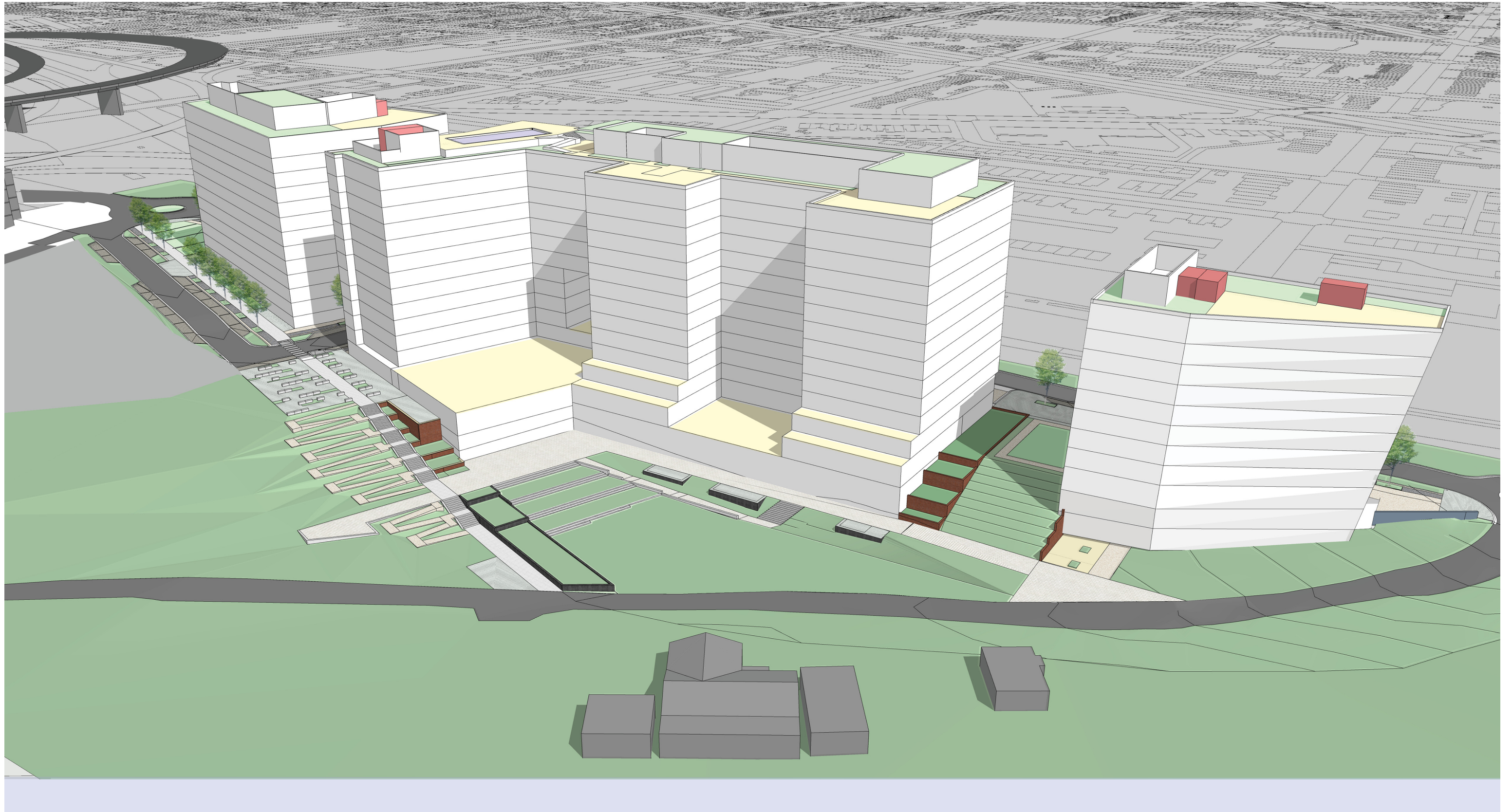
PUD SUBMISSION

AERIAL VIEW



JUNE 05, 2020

A-2 2



1333 M STREET

SE Waterfront, Washington DC

PUD SUBMISSION

AERIAL VIEW



JUNE 05, 2020

A-2 3



**LEED v4 for BD+C: New Construction and Major Renovation**  
Project Checklist

Project Name: 1333 M Street  
Date: 3/13/2020

Y ? N

			Credit	Integrative Process	1
<b>17</b>	<b>3</b>	<b>1</b>	<b>Location and Transportation</b>		<b>32</b>
4			Credit	LEED for Neighborhood Development Location	16
		1	Credit	Sensitive Land Protection	1
2			Credit	High Priority Site	2
5			Credit	Surrounding Density and Diverse Uses	5
5			Credit	Access to Quality Transit	5
1			Credit	Bicycle Facilities	1
			Credit	Reduced Parking Footprint	1
	3		Credit	Green Vehicles	1
<b>8</b>	<b>2</b>	<b>1</b>	<b>Sustainable Sites</b>		<b>10</b>
Y			Prereq	Construction Activity Pollution Prevention	Required
1			Credit	Site Assessment	1
2			Credit	Site Development - Protect or Restore Habitat	2
1			Credit	Open Space	1
3			Credit	Rainwater Management	3
1	1		Credit	Heat Island Reduction	2
	1	1	Credit	Light Pollution Reduction	1
<b>4</b>	<b>3</b>	<b>0</b>	<b>Water Efficiency</b>		<b>11</b>
Y			Prereq	Outdoor Water Use Reduction	Required
Y			Prereq	Indoor Water Use Reduction	Required
Y			Prereq	Building-Level Water Metering	Required
	2		Credit	Outdoor Water Use Reduction	2
2			Credit	Indoor Water Use Reduction	6
1	1		Credit	Cooling Tower Water Use	2
1			Credit	Water Metering	1
<b>9</b>	<b>11</b>	<b>0</b>	<b>Energy and Atmosphere</b>		<b>33</b>
Y			Prereq	Fundamental Commissioning and Verification	Required
Y			Prereq	Minimum Energy Performance	Required
Y			Prereq	Building-Level Energy Metering	Required
Y			Prereq	Fundamental Refrigerant Management	Required
3	4		Credit	Enhanced Commissioning	6
5	2		Credit	Optimize Energy Performance	18
1			Credit	Advanced Energy Metering	1
	1		Credit	Demand Response	2
	2		Credit	Renewable Energy Production	3
	1		Credit	Enhanced Refrigerant Management	1
	1		Credit	Green Power and Carbon Offsets	2

<b>2</b>	<b>2</b>	<b>0</b>	<b>Materials and Resources</b>		<b>13</b>
Y			Prereq	Storage and Collection of Recyclables	Required
Y			Prereq	Construction and Demolition Waste Management Planning	Required
1			Credit	Building Life-Cycle Impact Reduction	5
	1		Credit	Building Product Disclosure and Optimization - Environmental Product Declarations	2
			Credit	Building Product Disclosure and Optimization - Sourcing of Raw Materials	2
			Credit	Building Product Disclosure and Optimization - Material Ingredients	2
1	1		Credit	Construction and Demolition Waste Management	2

<b>8</b>	<b>4</b>	<b>0</b>	<b>Indoor Environmental Quality</b>		<b>16</b>
Y			Prereq	Minimum Indoor Air Quality Performance	Required
Y			Prereq	Environmental Tobacco Smoke Control	Required
1			Credit	Enhanced Indoor Air Quality Strategies	2
1			Credit	Low-Emitting Materials	3
1			Credit	Construction Indoor Air Quality Management Plan	1
1	1		Credit	Indoor Air Quality Assessment	2
1			Credit	Thermal Comfort	1
1	1		Credit	Interior Lighting	2
1	1		Credit	Daylight	3
1			Credit	Quality Views	1
	1		Credit	Acoustic Performance	1

<b>3</b>	<b>0</b>	<b>0</b>	<b>Innovation</b>		<b>6</b>
2			Credit	Innovation	5
1			Credit	LEED Accredited Professional	1

<b>0</b>	<b>0</b>	<b>0</b>	<b>Regional Priority</b>		<b>4</b>
			Credit	Regional Priority: Specific Credit	1
			Credit	Regional Priority: Specific Credit	1
			Credit	Regional Priority: Specific Credit	1
			Credit	Regional Priority: Specific Credit	1

<b>51</b>	<b>25</b>	<b>2</b>	<b>TOTALS</b>		<b>Possible Points: 126</b>
Certified: 40 to 49 points, Silver: 50 to 59 points, Gold: 60 to 79 points, Platinum: 80 to 110					