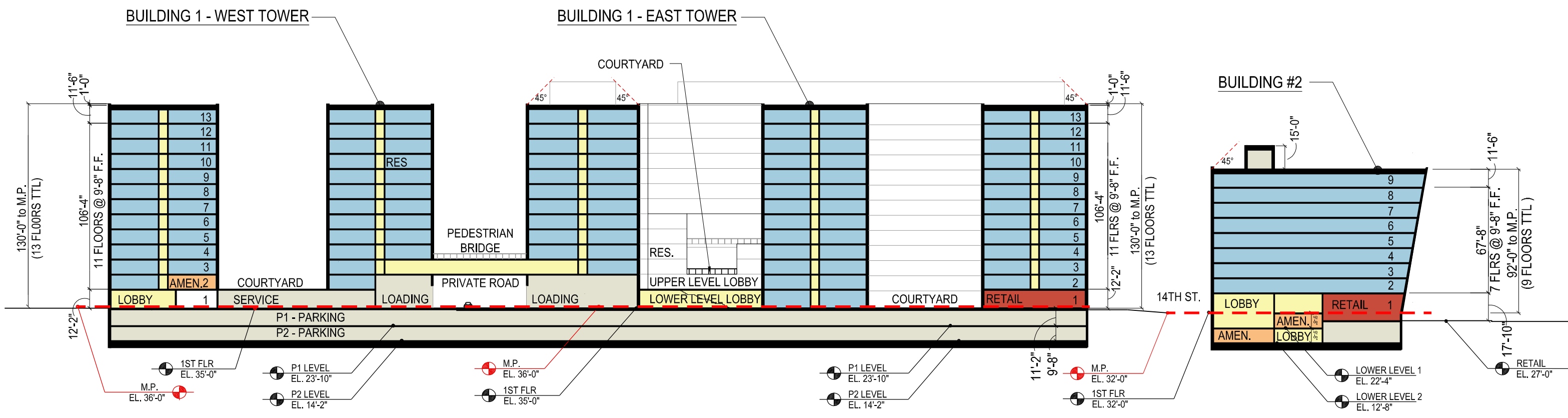
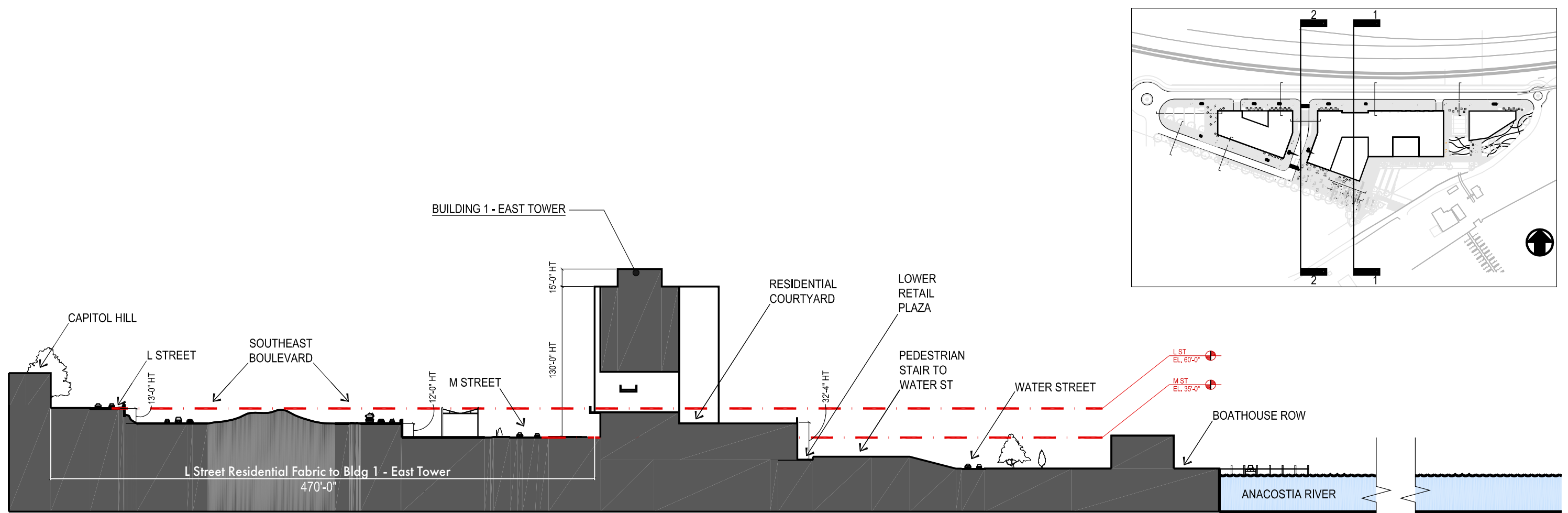


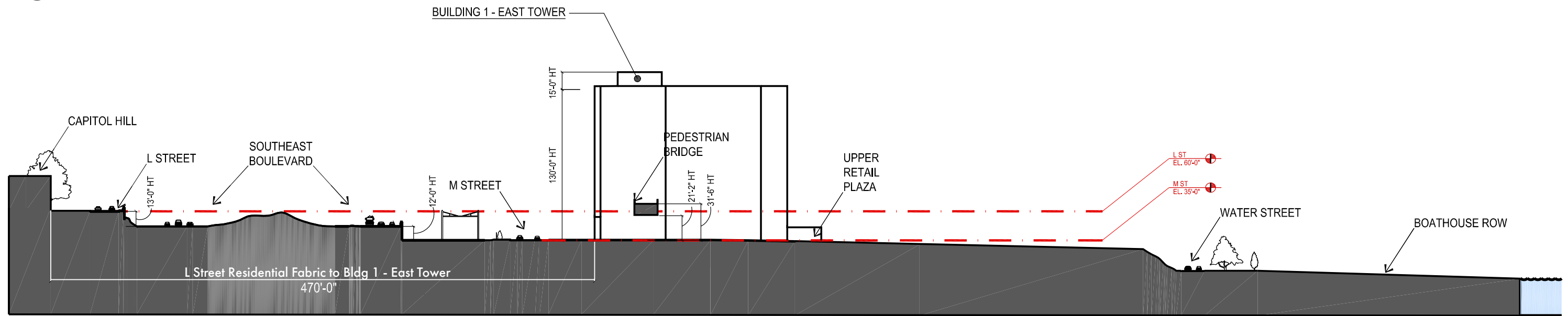
1 SECTION A-A
SCALE: 1:60=1'-0"
470'-0"



2 SECTION B-B
SCALE: 1:60=1'-0"



1 NORTH-SOUTH SITE SECTION
SCALE: 1"=80'



2 NORTH-SOUTH SITE SECTION
SCALE: 1"=80'



1333 M STREET

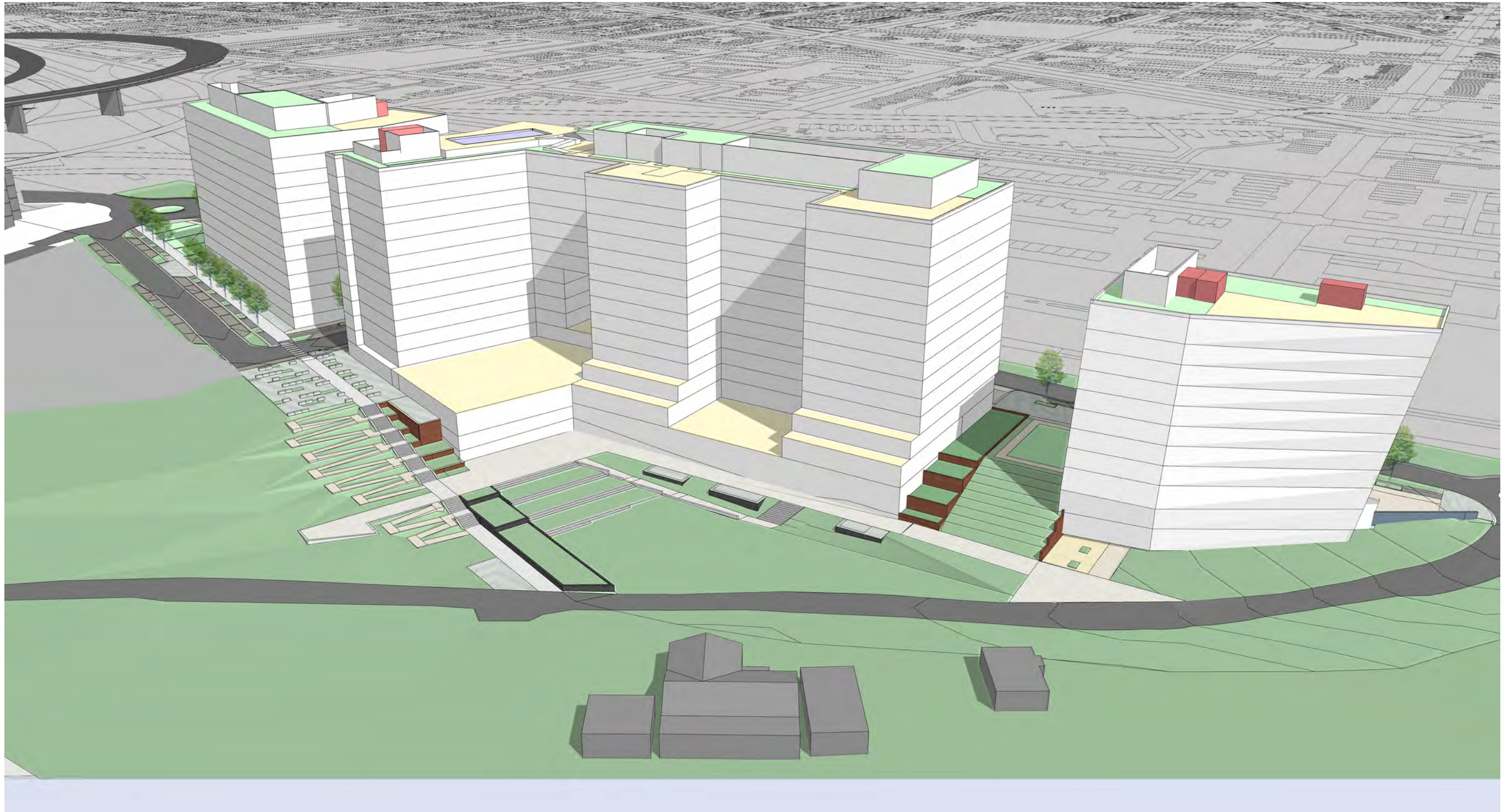
SE Waterfront, Washington DC

PUD SUBMISSION | Stage 1

AERIAL VIEW

(PREVIOUSLY FILED 06.08.2020 AT EXHIBIT 17A3) NOVEMBER 19, 2020





1333 M STREET

SE Waterfront, Washington DC

PUD SUBMISSION | Stage 1

AERIAL VIEW

(PREVIOUSLY FILED 06.08.2020 AT EXHIBIT 17A3) NOVEMBER 19, 2020



A-2 3



LEED v4 for BD+C: New Construction and Major Renovation
Project Checklist

Project Name: 1333 M Street
Date: 9/25/2020

Y ? N

Y	?	N
---	---	---

1	0	0	Credit	Integrative Process	1
19 0 13 Location and Transportation 32					
4	0	12	Credit	LEED for Neighborhood Development Location	16
2	0	1	Credit	Sensitive Land Protection	1
2	0	0	Credit	High Priority Site	2
5	0	0	Credit	Surrounding Density and Diverse Uses	5
5	0	0	Credit	Access to Quality Transit	5
1	0	0	Credit	Bicycle Facilities	1
1	0	0	Credit	Reduced Parking Footprint	1
1	0	0	Credit	Green Vehicles	1
8 2 0 Sustainable Sites 10					
Y	0	0	Prereq	Construction Activity Pollution Prevention	Required
1	0	0	Credit	Site Assessment	1
2	0	0	Credit	Site Development - Protect or Restore Habitat	2
1	0	0	Credit	Open Space	1
3	0	0	Credit	Rainwater Management	3
1	1	0	Credit	Heat Island Reduction	2
1	1	0	Credit	Light Pollution Reduction	1
4 7 0 Water Efficiency 11					
Y	0	0	Prereq	Outdoor Water Use Reduction	Required
Y	0	0	Prereq	Indoor Water Use Reduction	Required
Y	0	0	Prereq	Building-Level Water Metering	Required
2	2	0	Credit	Outdoor Water Use Reduction	2
2	4	0	Credit	Indoor Water Use Reduction	6
1	1	0	Credit	Cooling Tower Water Use	2
1	0	0	Credit	Water Metering	1
9 10 14 Energy and Atmosphere 33					
Y	0	0	Prereq	Fundamental Commissioning and Verification	Required
Y	0	0	Prereq	Minimum Energy Performance	Required
Y	0	0	Prereq	Building-Level Energy Metering	Required
Y	0	0	Prereq	Fundamental Refrigerant Management	Required
3	3	0	Credit	Enhanced Commissioning	6
5	2	11	Credit	Optimize Energy Performance	18
1	0	0	Credit	Advanced Energy Metering	1
1	1	0	Credit	Demand Response	2
2	1	0	Credit	Renewable Energy Production	3
1	0	0	Credit	Enhanced Refrigerant Management	1
1	1	0	Credit	Green Power and Carbon Offsets	2

4 6 3 Materials and Resources 13					
Y	0	0	Prereq	Storage and Collection of Recyclables	Required
Y	0	0	Prereq	Construction and Demolition Waste Management Planning	Required
1	1	3	Credit	Building Life-Cycle Impact Reduction	5
1	1	0	Credit	Building Product Disclosure and Optimization - Environmental Product Declarations	2
2	0	0	Credit	Building Product Disclosure and Optimization - Sourcing of Raw Materials	2
1	1	0	Credit	Building Product Disclosure and Optimization - Material Ingredients	2
1	1	0	Credit	Construction and Demolition Waste Management	2

7 9 0 Indoor Environmental Quality 16					
Y	0	0	Prereq	Minimum Indoor Air Quality Performance	Required
Y	0	0	Prereq	Environmental Tobacco Smoke Control	Required
1	1	0	Credit	Enhanced Indoor Air Quality Strategies	2
1	2	0	Credit	Low-Emitting Materials	3
1	0	0	Credit	Construction Indoor Air Quality Management Plan	1
1	1	0	Credit	Indoor Air Quality Assessment	2
1	1	0	Credit	Thermal Comfort	1
1	1	0	Credit	Interior Lighting	2
1	2	0	Credit	Daylight	3
1	0	0	Credit	Quality Views	1
1	1	0	Credit	Acoustic Performance	1

5 1 0 Innovation 6					
4	1	0	Credit	Innovation	5
1	0	0	Credit	LEED Accredited Professional	1

4 0 0 Regional Priority 4					
1	0	0	Credit	Regional Priority: Specific Credit	1
1	0	0	Credit	Regional Priority: Specific Credit	1
1	0	0	Credit	Regional Priority: Specific Credit	1
1	0	0	Credit	Regional Priority: Specific Credit	1

60	35	30	TOTALS		Possible Points: 126
Certified: 40 to 49 points, Silver: 50 to 59 points, Gold: 60 to 79 points, Platinum: 80 to 110					

