

**CIVIL**

## GENERAL CONSTRUCTION NOTES

- TWO-FOOT CONTOUR DATA BASED ON A SURVEY PERFORMED BY CAS ENGINEERING, DATED AUGUST, 2017, AND UPDATED IN OCTOBER/NOVEMBER, 2019.
- BOUNDARY INFORMATION BASED ON A SURVEY PERFORMED BY CAS ENGINEERING, DATED AUGUST, 2017.
- ZONING: PDR-4
- TOTAL LOT AREA: TOTAL AREA = 127,499 SQUARE FEET (2.927 ACRES)  
(SEE BREAKDOWN ON EXISTING CONDITIONS/DEMOLITION PLAN)
- PROJECT IS WITHIN FLOOD ZONES "AE" (BASE FLOOD ELEVATIONS DETERMINED) AND "X" (AREAS DETERMINED TO BE OUTSIDE THE 0.2% ANNUAL CHANCE FLOODPLAIN) AS PER FEMA FLOOD INSURANCE RATE MAP PANEL No. 1100010038C.
- FINAL GAS, TELEPHONE AND ELECTRIC ALIGNMENT SUBJECT TO UTILITY COMPANY APPROVAL.
- EX. WATER AND SEWER LINES TO BE "TEST -PITTED" PRIOR TO CONSTRUCTION. PROPOSED WATER AND SEWER TO BE ADJUSTED IN LINE AND GRADE ACCORDINGLY.
- ANY NECESSARY TREE PROTECTION MEASURES, FOR ON-SITE OR OFF-SITE TREES, ARE TO BE ADDRESSED BY OTHERS.
- THE CONTRACTOR SHALL HAND DIG TEST PITS AT ALL UTILITY CROSSINGS AND CONNECTING POINTS TO DETERMINE THE EXACT LOCATION AND DEPTH WELL IN ADVANCE OF CONSTRUCTION.
- D.C. STANDARD DETAILS WHERE SHOWN ARE FOR GENERAL INFORMATION ONLY. THE CONTRACTOR SHALL OBTAIN THE MOST CURRENT APPLICABLE D.C. DETAILS AND STANDARDS AND PERFORM CONSTRUCTION ACCORDINGLY.
- FOR FIELD LOCATION AND ABANDONMENT / REMOVAL OF GAS MAINS AND SERVICE CONNECTIONS, CONTRACTOR SHALL NOTIFY WASHINGTON GAS LIGHT COMPANY, (703) 750-1000, 72 HOURS PRIOR TO THE START OF ANY EXCAVATION OR CONSTRUCTION.
- CONTRACTOR SHALL CONTACT MISS UTILITY, 1-800-257-7777, 48 HOURS PRIOR TO START OF CONSTRUCTION.
- CONTRACTOR SHALL CONTACT DEPARTMENT OF PUBLIC WORKS - PUBLIC SPACE MAINTENANCE ADMINISTRATION, 48 HOURS PRIOR TO START OF CONSTRUCTION, AT (202) 645-7050.
- THE CONTRACTOR SHALL BE RESPONSIBLE FOR REPAIRING, REPLACING AND/OR RESTORING ANY AND ALL UTILITY SERVICE CONNECTIONS DISTURBED DURING CONSTRUCTION.
- CONTRACTOR IS TO VERIFY FIELD CONDITIONS PRIOR TO AND DURING CONSTRUCTION AND NOTIFY CAS ENGINEERING AT (301) 607-8031 IMMEDIATELY OF ANY DISCREPANCIES BETWEEN ACTUAL FIELD CONDITIONS AND THE APPROVED PLANS.
- CONTRACTOR TO PATCH ROADWAY (PAVEMENT/ASPHALT) AT ALL LOCATIONS WHERE UTILITY WORK OCCURS. CONTRACTOR TO MILL AND OVERLAY ASPHALT AS NECESSARY OR REQUIRED BY DDOT.
- THE CONTRACTOR SHALL PERFORM ALL CONSTRUCTION IN PUBLIC SPACE IN ACCORDANCE WITH D.C. DEPARTMENT OF TRANSPORTATION STANDARD SPECIFICATIONS FOR HIGHWAYS AND STRUCTURES, LATEST EDITION. THE CONTRACTOR SHALL OBTAIN SAID SPECIFICATIONS.
- CONTRACTOR SHALL OBTAIN ALL NECESSARY PERMITS PRIOR TO PROCEEDING WITH DEMOLITION OF EXISTING IMPROVEMENTS.
- THE CONTRACTOR SHALL VERIFY THE ACTIVE/INACTIVE STATUS OF ANY EXISTING UTILITIES ENCOUNTERED ON SITE AND ABANDON OR RELOCATE AS APPROPRIATE. ABANDONMENT SHALL BE IN ACCORDANCE WITH DC WATER STANDARDS AND DETAILS.

## SITE CONSTRUCTION NOTES

- PROPOSED UTILITY LOCATIONS SUBJECT TO FIELD MODIFICATION AND UTILITY COMPANY APPROVAL.
- CONTRACTOR TO ADJUST ALL EXISTING UTILITY TOPS (I.E. CLEANOUTS, MANHOLES, VALVE COVERS, ETC.) TO FINAL GRADE WHERE NECESSARY.
- CONTRACTOR TO COORDINATE ABANDONMENT OF ALL EXISTING UTILITIES AS NECESSARY.
- CONTRACTOR TO COORDINATE ON-SITE UTILITY CROSSINGS TO ENSURE ADEQUATE SEPARATION AT INTERSECTIONS.
- TEST PIT ALL UTILITY CROSSINGS PRIOR TO START OF CONSTRUCTION, ANY FIELD MODIFICATION TO BE COORDINATED WITH APPROPRIATE UTILITY AND/OR DC INSPECTOR.
- PROPOSED RETAINING WALLS SHOWN ARE TO BE DESIGNED BY OTHERS, TYPICAL.
- FOR FINAL LANDSCAPE/HARDSCAPE DETAILS, SPECIFICATIONS, ELEVATIONS, AND DIMENSIONS SEE LANDSCAPE PLANS, POOL PLANS, OR ARCHITECTURAL PLANS, AS APPROPRIATE.
- FOR TREE PROTECTION MEASURES SEE PLANS AND REPORTS BY OTHERS AS APPLICABLE.
- CONTRACTOR TO MAINTAIN DRAINAGE FACILITIES ON AND THROUGH THE SITE AT ALL TIMES DURING CONSTRUCTION. UTILIZE TEMPORARY FACILITIES/FEATURES AND/OR CONNECTIONS AS NECESSARY TO MAINTAIN POSITIVE DRAINAGE.
- CONTRACTOR TO COMPLETE SITE GRADING AND PAVING TO ENSURE POSITIVE DRAINAGE TO ALL INLETS OR NATURAL DRAINAGE COURSES TO PREVENT PONDING AND THE CREATION OF LOW SPOTS.
- CONTRACTOR TO REVIEW TIE IN POINTS WITH EXISTING PAVING AND GRADING WHERE PROPOSED ON AND ADJACENT TO PROJECT SITE, ADJUST WITH TRANSITIONS AND COORDINATE WITH CAS ENGINEERING AS APPROPRIATE.
- CONTRACTOR RESPONSIBLE FOR ENSURING THAT ROUTES MEET AMERICANS WITH DISABILITIES ACT (ADA) REQUIREMENTS, WHERE REQUIRED/APPLICABLE, 5% MAXIMUM SLOPE, 2% MAXIMUM CROSS SLOPE. CONTRACTOR ALSO RESPONSIBLE FOR ENSURING THAT RAMPS MEET ADA REQUIREMENTS, WHERE REQUIRED/APPLICABLE, 8.3% MAXIMUM SLOPE AND 2% MAXIMUM CROSS SLOPE.
- CONTRACTOR TO MAINTAIN FIRE DEPARTMENT AND EMERGENCY ACCESS ROUTES TO SITE AND TO APPLICABLE APPURTENANCES (I.E. FIRE HYDRANTS) DURING CONSTRUCTION UNLESS PRIOR APPROVAL IS OBTAINED FROM APPROPRIATE DISTRICT AGENCIES.

## MISS UTILITY

FOR LOCATION OF UTILITIES, CALL "MISS UTILITY" AT 1-800-257-7777, OR LOG ON TO WWW.MISSUTILITY.NET/ITC 48 HOURS IN ADVANCE OF ANY WORK IN THIS VICINITY. THE EXCAVATOR MUST NOTIFY ALL PUBLIC UTILITY COMPANIES WITH UNDER GROUND FACILITIES IN THE AREA OF PROPOSED EXCAVATION AND HAVE THOSE FACILITIES LOCATED BY THE UTILITY COMPANIES PRIOR TO COMMENCING EXCAVATION. THE EXCAVATOR IS RESPONSIBLE FOR COMPLIANCE WITH ALL JURISDICTIONAL REQUIREMENTS.

## UTILITY INFORMATION

EXISTING UNDERGROUND UTILITY LOCATIONS ARE APPROXIMATE AND MUST BE FIELD VERIFIED. UTILITY LOCATIONS ARE BASED UPON AVAILABLE RECORDS AND ARE SHOWN TO THE BEST OF OUR ABILITY.

## STORM DRAIN NOTES

- ALL STORM DRAIN PIPE TO BE SCHEDULE 40 PVC OR OF HIGHER QUALITY.
- DOWNSPOUT LEADERS ORIGINATING DIRECTLY FROM DOWNSPOUTS TO BE 4" PVC (OR APPROVED EQUIVALENT), UNLESS INDICATED OTHERWISE ON PLAN.
- PROVIDE CLEANOUTS, AS SHOWN ON PLAN AT A MINIMUM, OR AS REQUIRED BY PLUMBING CODE.
- MAINTAIN MINIMUM 12" COVER OVER ALL PIPE.
- ALL STORM DRAIN UNDER DRIVEWAY OR PAVED AREAS TO BE BEDDED IN GRAVEL AND TO HAVE A MINIMUM OF 12" OF COVER, OR BE CAST IRON.
- PROPOSED STORM DRAIN PIPING TO BE AT 2.0% MINIMUM SLOPE, UNLESS OTHERWISE INDICATED. USE VERTICAL BENDS WHERE NECESSARY TO FOLLOW FINISHED GRADES.

## ABBREVIATIONS LIST

(FOR REFERENCE ONLY, NOT ALL ARE USED WITHIN THIS PLAN SET)

A	AREA OF ARC	F	FIRE LINE	R	RADIUS OR PER RECORD
AASHTO	AMERICAN ASSOCIATION OF STATE HIGHWAY & TRANSPORTATION OFFICIALS	FAR	FLOOR AREA RATION	RF	REINFORCED CONCRETE PIPE
AC	ACRE	FD	FLOOR DRAIN	RD	ROAD OR FOOT DRAIN
ADJ	ADJACENT	FF	FIRST FLOOR	REIN	REINFORCED
AGGR	AGGREGATE	FG	FINISHED GRADE	REQD	REQUIRED
AHD	AHEAD	FL	FIRE HYDRANT	RET	RETAINING
ANSI	AMERICAN NATIONAL STANDARDS INSTITUTE	FL	FLOW LINE	REV	REVISION
APPROX	APPROXIMATE	FND	FOUNDATION	RMA	ROUGH GRADING PLAN
ARCH	ARCHITECTURAL	FOY	FOYER	RM	RESOURCE MANAGEMENT AREA
ASPH	ASPHALT	FP	FLOOD PLAN	RPA	RESOURCE PROTECTION AREA
ASTM	AMERICAN SOCIETY FOR TESTING AND MATERIALS	FPS	FEET PER SECOND	RR	RAIL ROAD
AVE	AVENUE	FS	FIRE SAFETY OR FACTOR OF SAFETY	RT	RIGHT
AWWA	AMERICAN WATER WORKS ASSOCIATION	FT	FOOT OR FEET	R/W	RIGHT OF WAY
B	BREADTH	G	GAS	S	SOUTH OR SEWER OR SPEED OR SLOPE
BC	BACK OF CURB	GAR	GARAGE	SAN	SANITARY
BF	BASEMENT FLOOR	GFA	GROSS FLOOR AREA	SBL	SOUTH BOUND LANE
BLDG	BUILDING	GHC	GAS HOUSE CONNECTION	SCH	SCHEDULE
BLVD	BOULEVARD	GR	GUARD RAIL OR GRATE	SCH	SIGHT DISTANCE OR STORM DRAIN
BM	BENCHMARK	GV	GAS VALVE	SDMH	STORM DRAIN MANHOLE
BMP	BEST MANAGEMENT PRACTICES (WATER QUALITY)	H	HEAD	SE	SOUTHEAST
BOV	BLOW OFF VALVE	HC	HANDICAP	SEC	SECTION
BRG	BEARING	HB	HORIZONTAL BEND	SEW	SEWER
BRL	BUILDING RESTRICTION LINE	HBL	HYDRAULIC GRADE LINE	SF	SQUARE FOOT
BVCE	BEGINNING VERTICAL CURVE ELEVATION	HORZ	HORIZONTAL	SH	SHOULDER
BVCS	BEGINNING VERTICAL CURVE STATION	HR	HIGH POINT	SHC	SEWER HOUSE CONNECTION
BW	BOTTOM OF WALL	HT	HEIGHT	SMH	SEWER MANHOLE
C	CENTER CORRECTION ON VERTICAL CURVE	HW	HEADWATER	SP	SPACE OR SITE PLAN
C&G	CURB AND GUTTER	I	INTENSITY, RAINFALL	SPEC	SPECIFICATIONS
CAV	CABLE TELEVISION	ID	INSIDE DIAMETER OR IDENTIFICATION	ST	STREET
CB	CATCH BASIN	IE	INVERT ELEVATION	STD	STANDARD
CBR	CALIFORNIA BEARING RATIO	IN	INCH	STM	STORM
CC	CENTER TO CENTER OF CURB FEET	INV	INVERT	STR	STRUCTURE
CFS	CUBIC FEET PER SECOND	IP	IRON PIPE	SV	SERVICE
CGR	CURB AND GUTTER (REVERSE SLOPE)	IPF	IRON PIPE FOUND	S/W	SIDEWALK
CH	CHORD	IPS	IRON PIPE SET	SWM	STORMWATER MANAGEMENT
CHBR	CHORD BEARING	J	JUNCTION BOX	Sx	SLOPE
CP	CAST IRON PIPE OR CAST IN PLACE	JNT	JOINT	SY	SQUARE YARD
CL	CLASS	K	SIGHT DISTANCE COEFFICIENT	T	TELEPHONE OR TANGENT
C/L	CENTER LINE	Ka	CULVERT ENTRANCE LOSS COEFFICIENT	TB	TOP OF BANK
CLR	CLEAR	L	LENGTH	TC	TOP OF CURB
CM	CUBIC METERS	LAT	LATERAL	Tc	TIME OF CONCENTRATION
CMP	CORRUGATED METAL PIPE	LCG	LIMITS OF CLEARING & GRADING	TEL	TELEPHONE
CMS	CUBIC METERS PER SECOND	LL	LOWER LEVEL	TEMP	TEMPORARY
CON	RUNOFF CURVE NUMBER	LL	LOWER LEVEL	TH	TEST HOLE
CONN	CONNECTION	LL	LOWER LEVEL	TL	TRAFFIC LIGHT
CONT	CONTINUOUS	LOC	LOCATION	TP	TEST PIT OR TREE PROTECTION
C/O	CLEAN OUT	LOS	LINE OF SIGHT	TRANSP	TRANSPORTATION
CONC	CONCRETE	LP	LOW POINT OR LIGHT POLE	TW	TOP OF WALL OR TAIL WATER
COV	COVERED	LS	LOADING SPACE	TYP	TYPICAL
CS	CURB STOP	L/S	LANDSCAPE AREA	U	UNKNOWN
C/S	COMBINED SEWER	LT	LEFT	UG	UNDERGROUND
CTR	CENTER	M	METER	U/S	UNDERGROUND
CY	CUBIC YARD	MAP	MAPLE	UGE	UNDERGROUND ELECTRIC
D	DRAIN	MAX	MAXIMUM	UGT	UNDERGROUND TELEPHONE
DA	DRAINAGE AREA	MD	MARYLAND	UL	UNDERGROUND CABLE
DB	DEED BOOK	MECH	MECHANICAL	UP	UTILITY POLE
DC	DISTRICT OF COLUMBIA	METRO	METROPOLITAN	USGS	US GEOLOGICAL SURVEY
DDOT	DISTRICT DEPARTMENT OF TRANSPORTATION	MH	MANHOLE	V	VOLUME
DET	DETAIL	MI	MILE	V, VOL	VELOCITY
DIA	DIAMETER	MIN	MINIMUM	V, VEL	VELOCITY
DIP	DUCTILE IRON PIPE	MISC	MISCELLANEOUS	VB	VERTICAL BEND
DI	DROP INLET	MON	MONUMENT	VC	VERTICAL CURVE
DIST	DISTANCE	MS	MEDIAN STRIP	VOOT	VIA DEPARTMENT OF TRANSPORTATION
DL	DOMESTIC LINE	MSHA	MARYLAND STATE HIGHWAY ADMINISTRATION	VERT	VERTICAL
DM	DROP MANHOLE	MSL	MEAN SEA LEVEL	VF	VERTICAL FOOT
DOH	DEPARTMENT OF HEALTH	N	NORTH	W	WEST OR WATER OR WEIGHT OR WIDTH
DOM	DOMESTIC	N/A	NOT APPLICABLE	W/	WITH
DR	DRIVE	NBL	NORTH BOUND LANE	WBL	WEST BOUND LANE
DRN	DRAINAGE	NE	NORTHEAST	WHC	WATER HOUSE CONNECTION
DU	DWELLING UNITS	N/F	NOW OR FORMERLY	WL	WATER LINE
DWG	DRAWING	NFA	NET FLOOR AREA	WM	WATER METER
D/S	DOWN SPOUT	NH	NUMBER	WQA	WATER QUALITY IMPACT ASSESSMENT
D/W	DRIVEWAY	NW	NORTHWEST	W/S	WRAPPED STEEL
E	EAST OR ELECTRIC OR RATE OF SUPER ELEVATION	OC	ON CENTER	XROSS	CROSS SECTION
EA	EACH	OBJ	OBJECT	XF	TRANSFORMER
EAL	EAST BOUND LANE	OD	OUTSIDE DIAMETER		
EC	EROSION CONTROL	OH	OVERHANG		
EG	EDGE OF GUTTER	O/H	OVERHEAD		
EGD	ENERGY LINE GRADIENT	O/H	OVERHEAD CABLE		
EHC	ELECTRIC HOUSE CONNECTION	OHE	OVERHEAD ELECTRIC		
EL	ELEVATION	OHT	OVERHEAD TELEPHONE		
ELEC	ELECTRIC	P	PER PLAN OR PERMETER		
ELEV	ELEVATION	P&P	PLAN & PROFILE		
ENGR	ENGINEER	P/C	POINT OF CURVATURE		
ENT	ENTRANCE	PCC	POINT OF COMPOUND CURVE		
EP	EDGE OF PAVEMENT	PCTC	POINT OF CURVATURE TOP OF CURB		
EQUIP	EQUIPMENT	PCEP	POINT OF CURVE EDGE OF PAVEMENT		
ES	END SECTION	PFM	PUBLIC FACILITIES MANUAL		
ESMT	EASEMENT	PG	PAGE		
ETD	EXISTING TO BE DEMOLISHED	PGL	POINT OF GRADE LINE		
ETR	EXISTING TO BE REMOVED	PI	POINT OF INTERSECTION		
ETRL	EXISTING TO BE RELOCATED	PL	PROPERTY LINE		
ETRP	EXISTING TO BE REPLACED	PL	PROPERTY LINE		
EVCE	ENDING VERTICAL CURVE ELEVATION	PP	POWER POLE		
EVCS	ENDING VERTICAL CURVE STATION	PRC	POINT OF REVERSE CURB		
EW	EXISTING	PRELIM	PRELIMINARY		
EX	EXISTING	PROP	PROPOSED		
EQC	ENVIRONMENTAL QUALITY CORRIDOR	PT	POINT OF TANGENCY		
		PVC	POINT OF VERTICAL CURVE OR POLYVINYL CHLORIDE PIPE		
		PVI	POINT OF VERTICAL INTERSECTION		
		PVMT	PAVEMENT		
		PVRC	POINT OF VERTICAL REVERSE CURVE		
		PVT	POINT OF VERTICAL TANGENT		
		Q	AMOUNT OF RUNOFF (FLOW RATE)		

## LEGEND

EXISTING FEATURES	PROPOSED FEATURES	SEDIMENT CONTROL FEATURES

1333 M STREET

SE Waterfront, Washington DC

PUD SUBMISSION

CIVIL LEGEND AND NOTES

## UTILITY GENERAL NOTES (DC WATER)

CONTRACTOR TO REFER TO DC WATER GENERAL CONSTRUCTION NOTES, MOST RECENT VERSION FOR INFORMATION REGARDING DC WATER UTILITIES. NOTES ARE AVAILABLE AT [www.dwater.com/sites/default/files/DCWater\\_General\\_Construction\\_Notes.pdf](http://www.dwater.com/sites/default/files/DCWater_General_Construction_Notes.pdf)

## CIVIL SHEET INDEX

- CIVIL LEGEND AND NOTES
- EXISTING CONDITIONS / SITE DEMOLITION PLAN
- SITE DEVELOPMENT PLAN
- GRADING PLAN
- STORMWATER MANAGEMENT PLAN
- EROSION AND SEDIMENT CONTROL PLAN
- UTILITY PLAN
- FLOODPLAIN EXHIBIT



SCALE: N.T.S.



(Previously Filed 6/8/20 at Exhibit 17AA15) November 19, 2020

C.1

**LOT AREA TABULATION**

**EXISTING**

LOT	SQUARE	AREA (SF)	AREA (AC.)
802	1025-E	5,107	0.117
1	1048-S	40,580	0.932
801	1048-S	16,183	0.372
802	1048-S	42,424	0.974
129	RES	15,269	0.351
299	RES	7,936	0.182
TOTAL		127,499	2.927

**PROPOSED**

LOT	SQUARE	AREA (SF)	AREA (AC.)
1	1048-S	118,633	2.723
2	1048-S	8,866	0.204
TOTAL		127,499	2.927

**SITE DEMOLITION NARRATIVE**

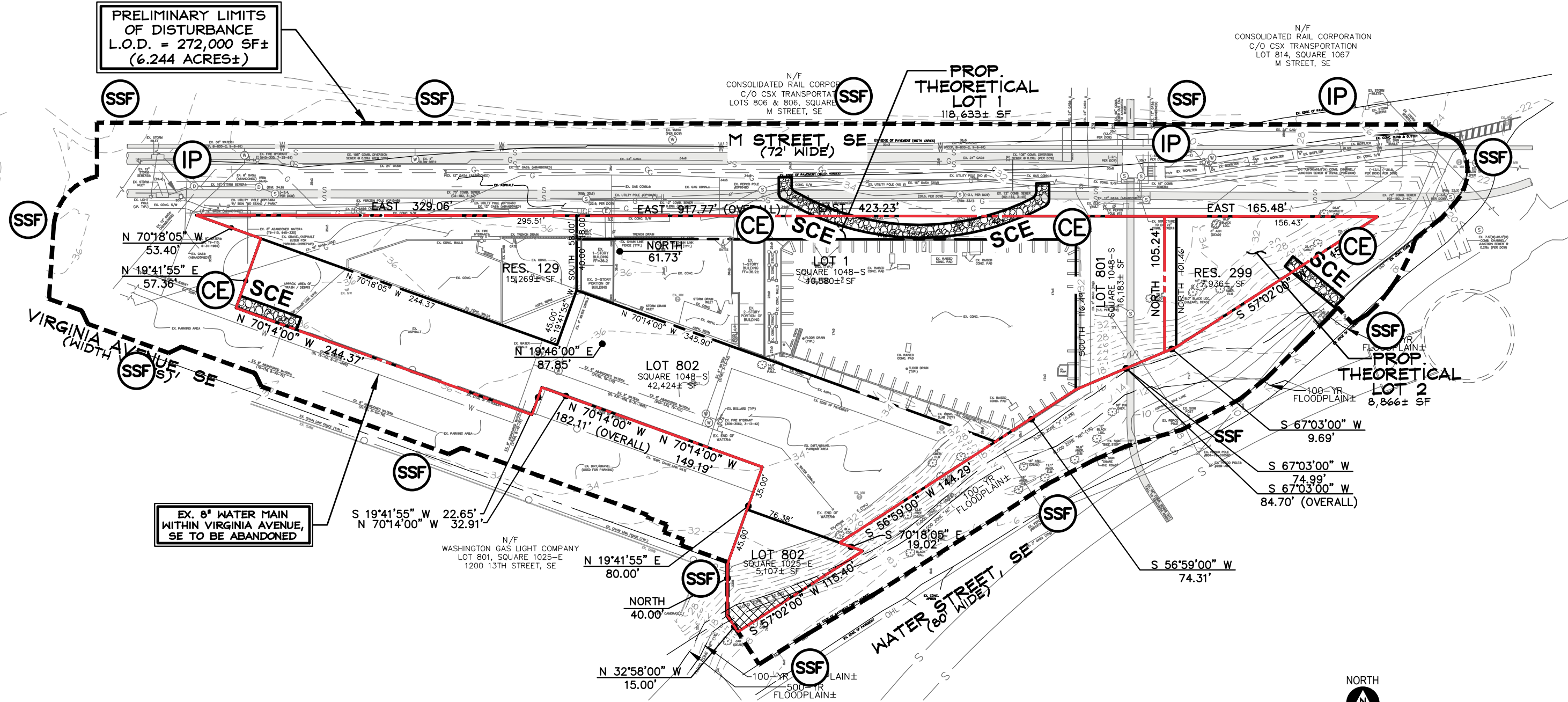
- 1) CONTRACTOR TO SECURE ALL NECESSARY PERMITS AND CONDUCT A PRE-CONSTRUCTION MEETING WITH THE SEDIMENT CONTROL INSPECTOR PRIOR TO THE START OF CONSTRUCTION OR ANY LAND DISTURBANCE. CALL 202-535-2240 TO SCHEDULE A PRE-CONSTRUCTION MEETING.
- A) INSTALL SEDIMENT CONTROL MEASURES.
- B) PROCEED WITH DEMOLITION ACTIVITIES. DEMOLISH EXISTING STRUCTURES WITH APPROPRIATE EQUIPMENT.
- C) REMOVE DEBRIS FROM SITE BY TRUCK. TEMPORARILY STABILIZE ALL DISTURBED AREAS PER DC SEDIMENT CONTROL REQUIREMENTS.
- D) REMOVE SEDIMENT CONTROL DEVICES AFTER ENTIRE SITE IS STABILIZED AND PERMISSION IS RECEIVED FROM THE SEDIMENT CONTROL INSPECTOR. SOME SEDIMENT CONTROL MEASURES MAY BE RETAINED TO USE FOR FUTURE CONSTRUCTION AS APPLICABLE. COORDINATE WITH DC INSPECTOR.

NOTE: THIS PROJECT DISTURBS OVER AN ACRE AND IS SUBJECT TO US ENVIRONMENTAL PROTECTION AGENCY (EPA) NOTICE OF INTENT FILING UNDER THE EPA'S GENERAL CONSTRUCTION PERMIT.

ALL TREES WITHIN LIMITS OF DISTURBANCE TO BE REMOVED (SUBJECT TO DDOT PERMITS, AS APPLICABLE)

CONTRACTOR TO PROTECT TREES (BRANCHES, TRUNK, ROOTS) ON NEIGHBORING LOTS THAT OVERLAP THE L.O.D. AND HERITAGE TREES ON SITE. COORDINATE WITH DDOT UFA WARD 6 ARBORIST AS APPLICABLE. CONTRACTOR TO USE A TRENCHLESS SILT FENCE METHOD AND TO HORIZONTALLY BORE OR AIR SPADE EXCAVATE FOR UTILITIES WITHIN THE CANOPY OF ANY TREE TO BE PRESERVED (INCLUDING PROTECTING TREES ON ADJACENT PROPERTIES), COORDINATE WITH DDOT WARD 6 ARBORIST AS APPLICABLE. THE DDOT WARD 6 LEAD ARBORIST IS STEVE MCKINDLEY-WARD, [steve.mckindley-ward@dc.gov](mailto:steve.mckindley-ward@dc.gov); (202) 527-5741.

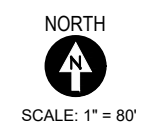
CONTRACTOR TO PROVIDE SUPER SILT FENCE, STRAW BALES OR EROSION CONTROL TUBE AROUND EXCAVATION / LIMITS OF DISTURBANCE AND PROVIDE INLET PROTECTION FOR ALL ONSITE AND ADJACENT INLETS (NOT SHOWN DUE TO SCALE)



N/F CONSOLIDATED RAIL CORPORATION  
C/O CSX TRANSPORTATION  
LOT 814, SQUARE 1067  
M STREET, SE

EX. 8" WATER MAIN WITHIN VIRGINIA AVENUE, SE TO BE ABANDONED

N/F WASHINGTON GAS LIGHT COMPANY  
LOT 801, SQUARE 1025-E  
1200 13TH STREET, SE



1333 M STREET  
SE Waterfront, Washington DC

**PUD SUBMISSION**  
**EXISTING CONDITIONS AND DEMOLITION PLAN**

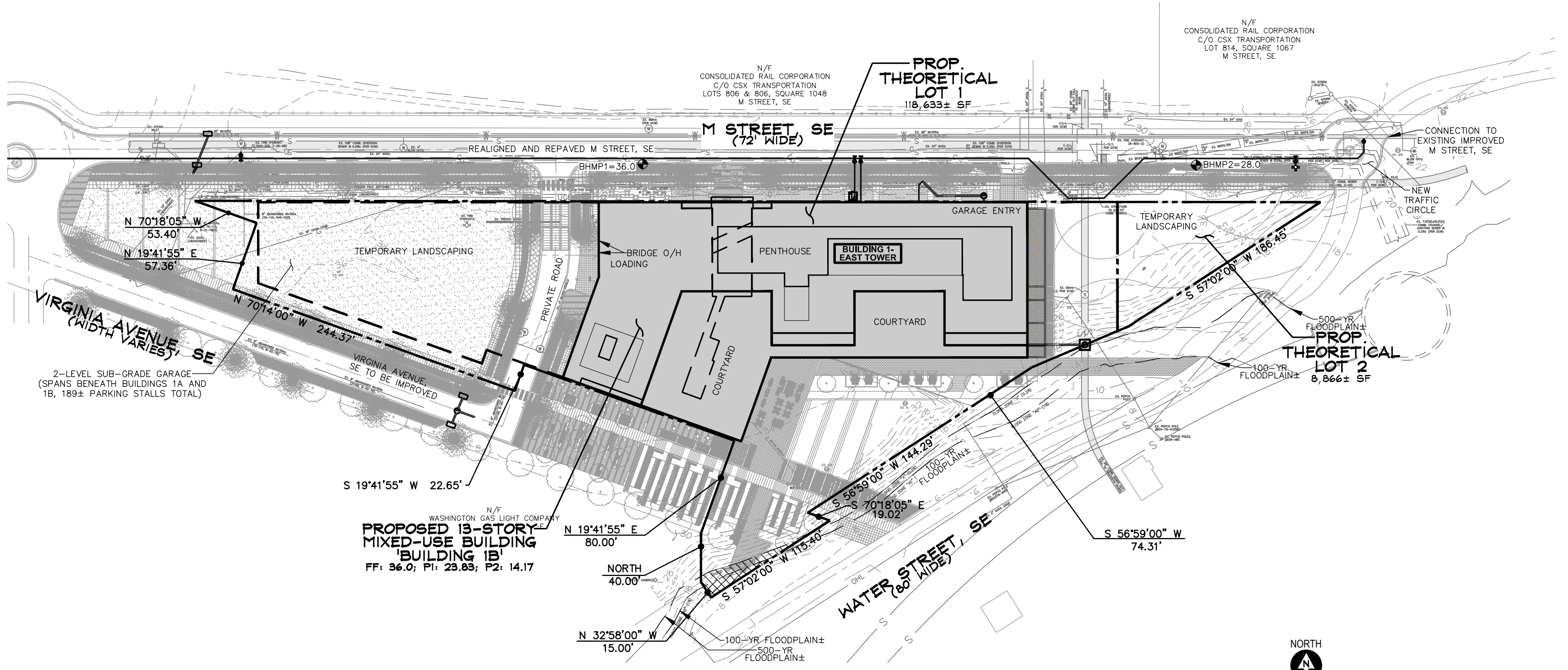
(Previously Filed 6/8/20 at Exhibit 17AA15) November 19, 2020



C.2

**BUILDING COVERAGE/HEIGHT TABULATION**

BUILDING	FOOTPRINT	NUMBER OF STORIES	MEASURE POINT	FF	BLDG. HEIGHT	% OCCUPANCY
BUILDING 1-EAST TOWER	52,178±	13	36.0 (PROP. TOP CURB)	36.0±	130'	44.8%
TOTAL SITE AREA = 127,499 SQ. FT.±; TOTAL BUILDING FOOTPRINT = 52,178 SQ. FT.±; % OCCUPANCY OVER ENTIRE SITE = 40.9%						



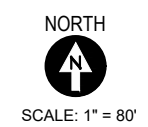
1333 M STREET  
SE Waterfront, Washington DC

**PUD SUBMISSION**  
**SITE DEVELOPMENT PLAN**

(Previously Filed 6/8/20 at Exhibit 17AA15) November 19, 2020

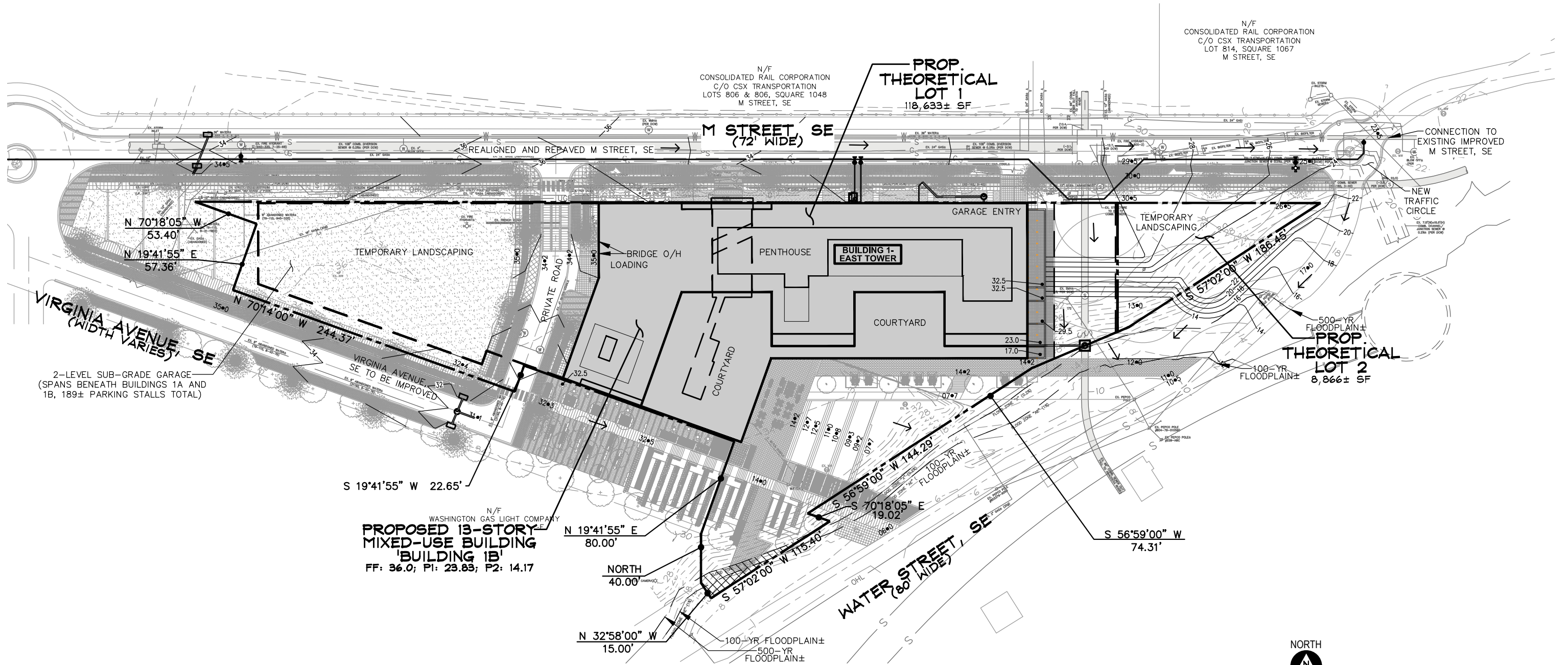
**C.3**

P:\2000-2009\2003\03051\_1333 M Street, SE\6 drawings\03051-DC\_PUD-Set-Interim-4.dwg, 10/28/2020 5:49:00 AM, © 2020 CAS Engineering and CAS Engineering-DC, LLC



**GRADING PLAN NOTES**

1) GRADING SHOWN SUBJECT TO FINAL PATIO/LANDSCAPE DESIGN.



1333 M STREET  
 SE Waterfront, Washington DC

**PUD SUBMISSION**  
**GRADING PLAN**

(Previously Filed 6/8/20 at Exhibit 17AA15) November 19, 2020

**C.4**

