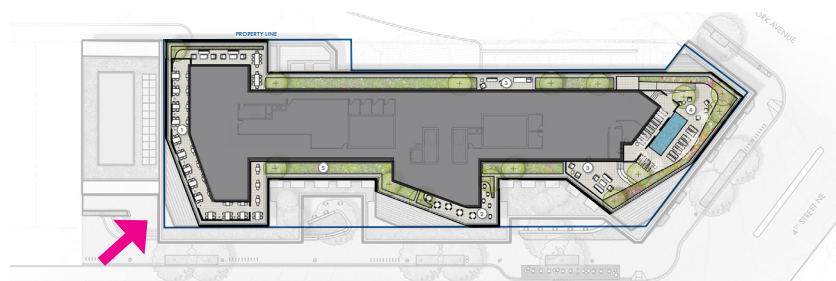


*NOTE: INTERIOR LAYOUT, EXTERIOR AMENITIES, LANDSCAPING, AND ROOFTOP MECHANICAL EQUIPMENT LOCATIONS ARE CONCEPTUAL AND SUBJECT TO CHANGE. APPLICANT REQUESTS FLEXIBILITY TO NOT INSTALL COMPONENTS RELATING TO COMMERCIAL USE OF ROOF STRUCTURE. ALL LIGHTING ON ROOF LEVEL WILL BE DOWNLIGHTING."

ILLUSTRATIVE PERSPECTIVE - PENTHOUSE EXPERIENCE
POST HEARING SUBMISSION

ZONING COMMISSION
 District of Columbia
 CASE NO. 19-29
 January 2022
 EXHIBIT NO. 44B

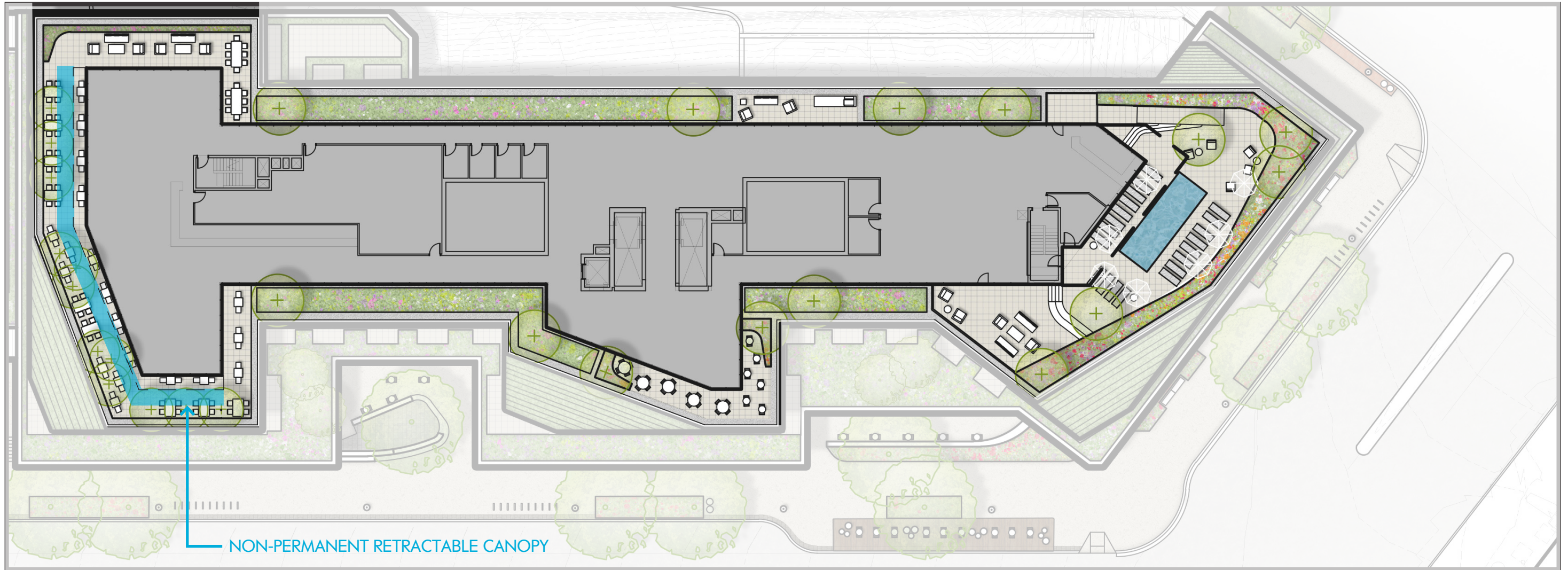


*NOTE: INTERIOR LAYOUT, EXTERIOR AMENITIES, LANDSCAPING, AND ROOFTOP MECHANICAL EQUIPMENT LOCATIONS ARE CONCEPTUAL AND SUBJECT TO CHANGE. APPLICANT REQUESTS FLEXIBILITY TO NOT INSTALL COMPONENTS RELATING TO COMMERCIAL USE OF ROOF STRUCTURE. ALL LIGHTING ON ROOF LEVEL WILL BE DOWNLIGHTING."

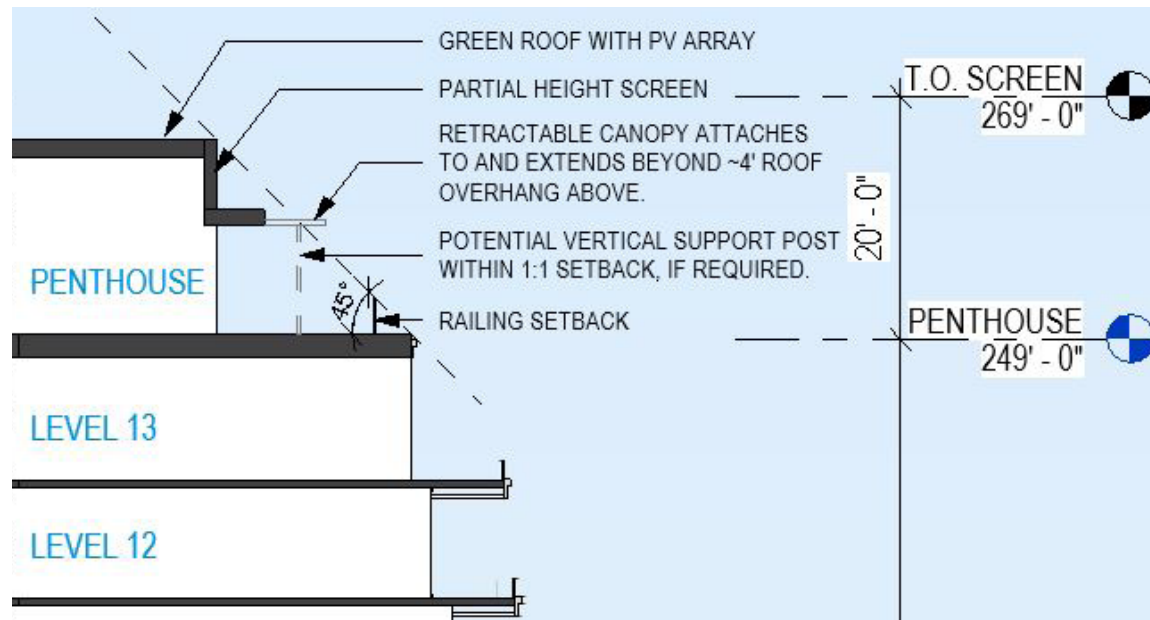
1348 4TH STREET NE

**ILLUSTRATIVE PERSPECTIVE - 4TH STREET LOOKING NORTHWEST
POST-HEARING SUBMISSION**

January 2022



ROOF PLAN



SECTION DIAGRAM

*NOTE: INTERIOR LAYOUT, EXTERIOR AMENITIES, LANDSCAPING, AND ROOFTOP MECHANICAL EQUIPMENT LOCATIONS ARE CONCEPTUAL AND SUBJECT TO CHANGE. APPLICANT REQUESTS FLEXIBILITY TO NOT INSTALL COMPONENTS RELATING TO COMMERCIAL USE OF ROOF STRUCTURE. ALL LIGHTING ON ROOF LEVEL WILL BE DOWNLIGHTING."