



2. GREEN SCREEN



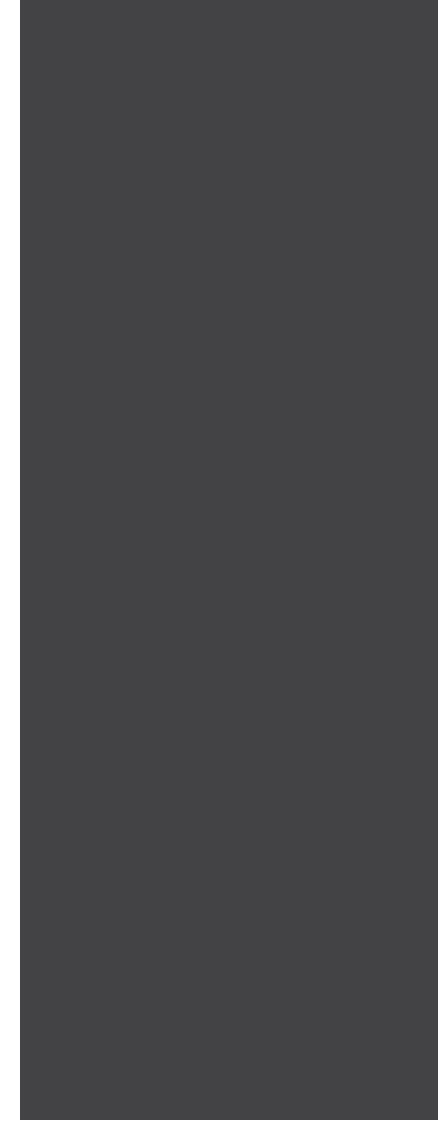
3. LOW IRON GLASS



7. BRICK AT PODIUM



6. FIN EXTENSIONS AT CURTAIN WALL



9. RETAIL PAINTED METAL



10. METAL AT TOWER



1. BALCONY PLANTERS



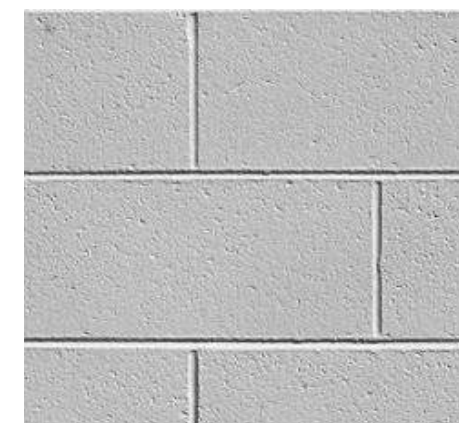
4. METAL RAILINGS



5. ROOFTOP GLASS RAILINGS



8. DARK GRAY LOUVERS

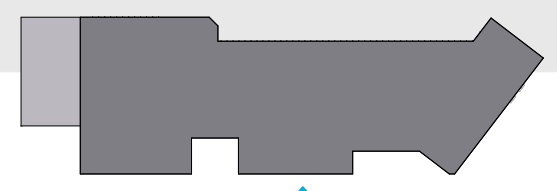


10. PAINTED CMU

1348 4TH STREET NE

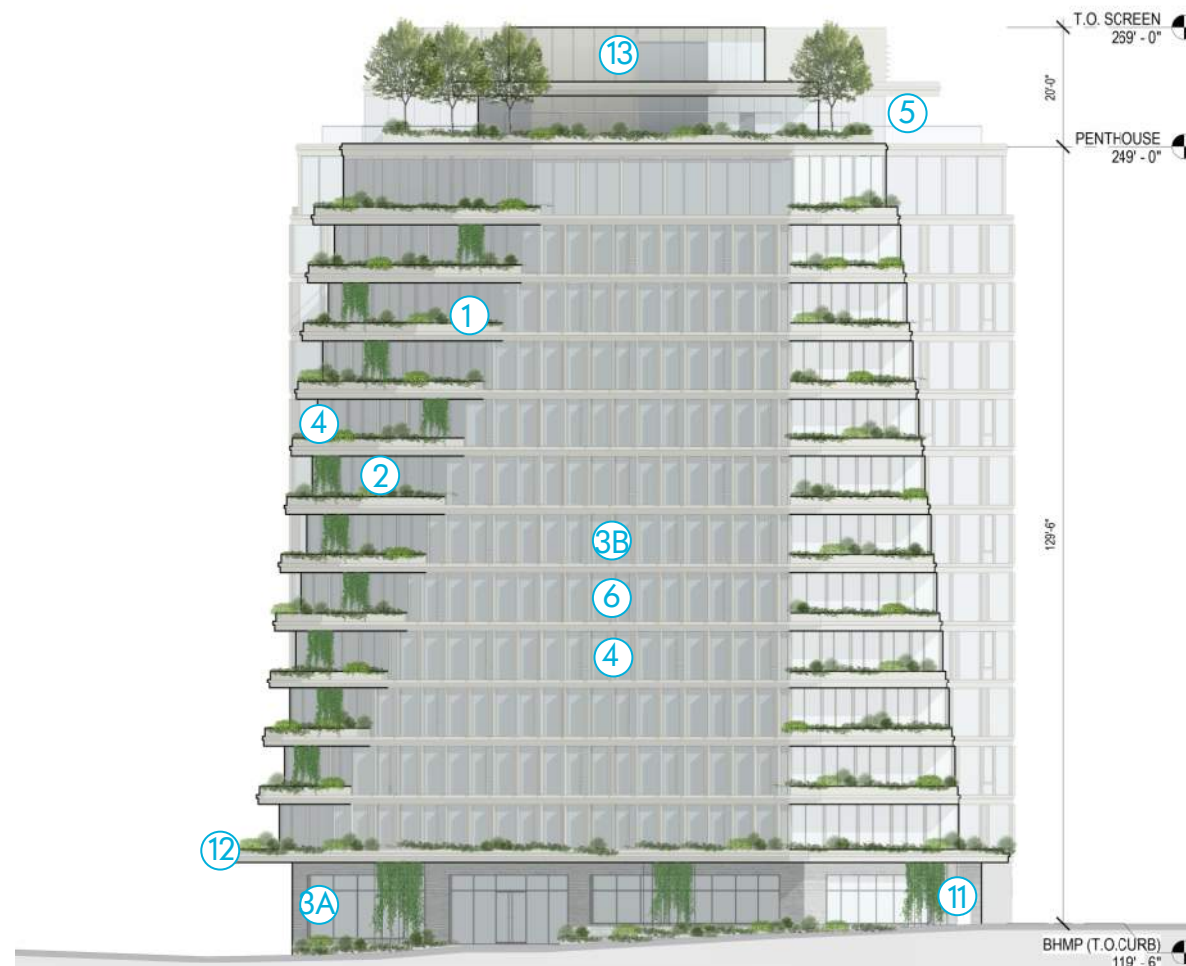


- ① BALCONY PLANTERS
- ② GREEN SCREEN
- ③A LOW IRON GLASS - STOREFRONT GLAZING
- ③B LOW IRON GLASS - ALUMINIUM FRAMED GLAZING
- ④ METAL RAILINGS
- ⑤ GLASS RAILING AT ROOFTOP
- ⑥ FIN EXTENSION AT CURTAIN WALL
- ⑦ BRICK AT PODIUM
- ⑧ DARK GRAY LOUVERS
- ⑨ RETAIL PAINTED METAL
- ⑩ PAINTED CMU
- ⑪ METAL AT TOWER
- ⑫ CANOPY
- ⑬ METAL PENTHOUSE SCREEN
- ⑭ OVERHEAD ROLLING DOOR
- ⑮ EXISTING BUILDING - NEW SIGNAGE, AWNING, PAINT & GLASS AT GARAGE OPENING
- ⑯ METAL MECHANICAL SCREEN



1348 4TH STREET NE
 *CONTENT ON PAGE EDITED OR ADDED

EAST ELEVATION | 4TH STREET
CONSOLIDATED PUD APPLICATION

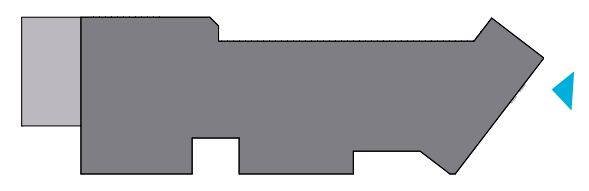


- ① BALCONY PLANTERS
- ② GREEN SCREEN
- ③A LOW IRON GLASS - STOREFRONT GLAZING
- ③B LOW IRON GLASS - ALUMINIUM FRAMED GLAZING
- ④ METAL RAILINGS

- ⑤ GLASS RAILING AT ROOFTOP
- ⑥ FIN EXTENSION AT CURTAIN WALL
- ⑦ BRICK AT PODIUM
- ⑧ DARK GRAY LOUVERS
- ⑨ RETAIL PAINTED METAL
- ⑩ PAINTED CMU

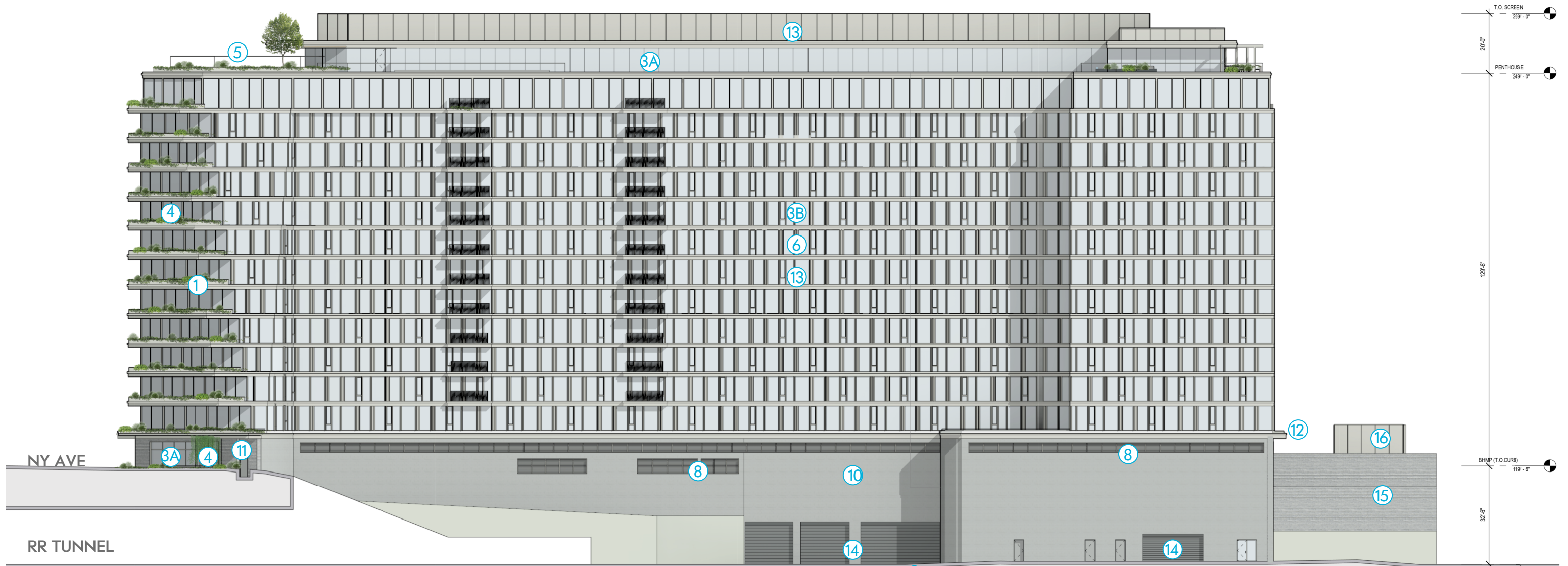
- ⑪ METAL AT TOWER
- ⑫ CANOPY
- ⑬ METAL PENTHOUSE SCREEN
- ⑭ OVERHEAD ROLLING DOOR
- ⑮ EXISTING BUILDING - NEW SIGNAGE, AWNING, PAINT & GLASS AT GARAGE OPENING

- ⑯ METAL MECHANICAL SCREEN

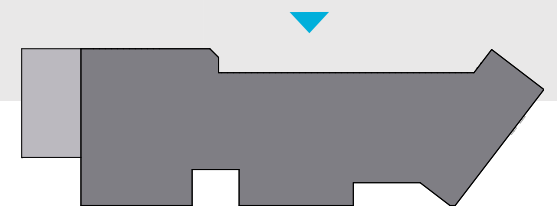


1348 4TH STREET NE
 *CONTENT ON PAGE EDITED OR ADDED

NORTH ELEVATION | PENN STREET
CONSOLIDATED PUD APPLICATION

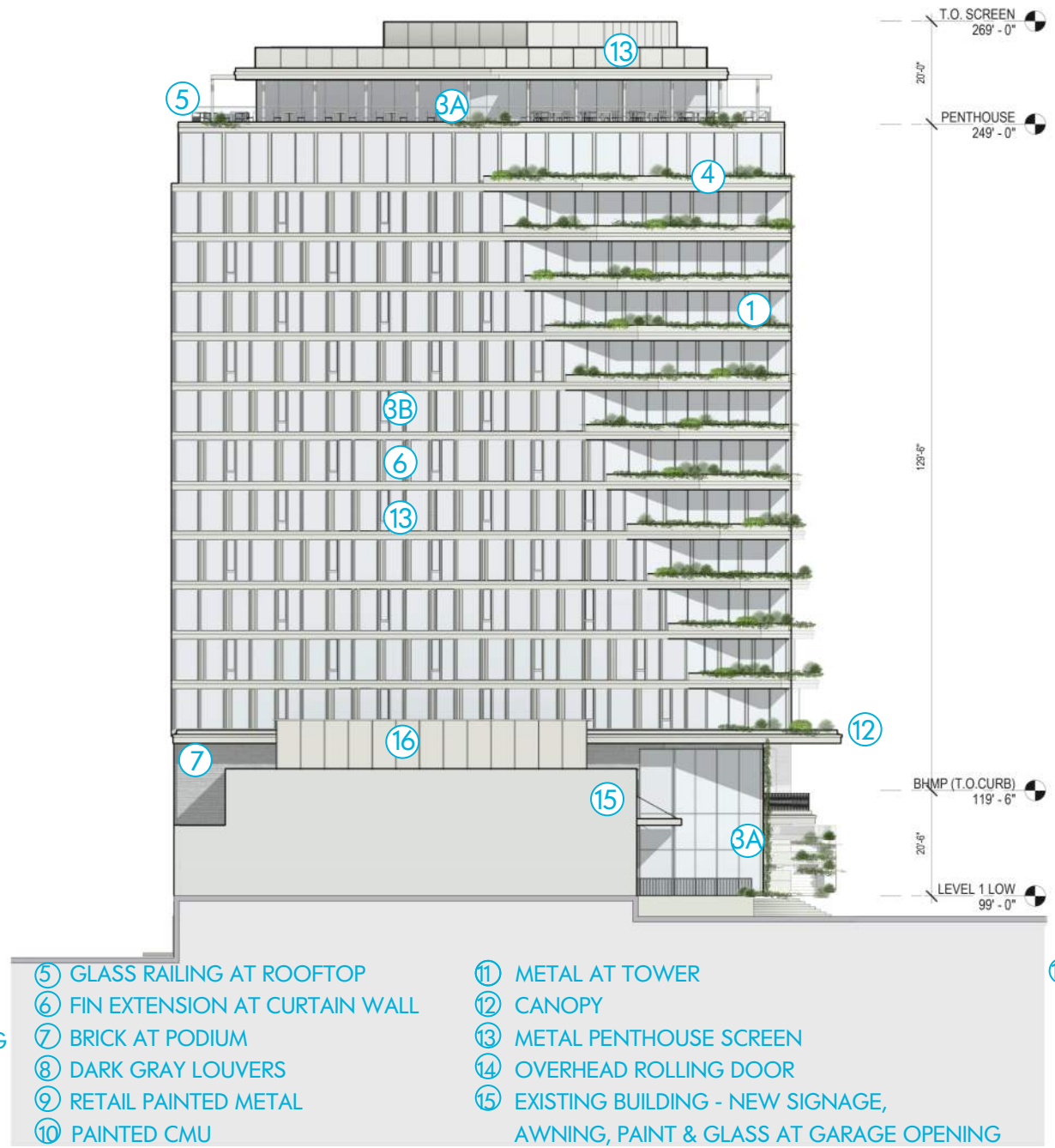


- ① BALCONY PLANTERS
- ② GREEN SCREEN
- ③A LOW IRON GLASS - STOREFRONT GLAZING
- ③B LOW IRON GLASS - ALUMINIUM FRAMED GLAZING
- ④ METAL RAILINGS
- ⑤ GLASS RAILING AT ROOFTOP
- ⑥ FIN EXTENSION AT CURTAIN WALL
- ⑦ BRICK AT PODIUM
- ⑧ DARK GRAY LOUVERS/ GLASS
- ⑨ RETAIL PAINTED METAL
- ⑩ PAINTED CMU
- ⑪ METAL AT TOWER
- ⑫ CANOPY
- ⑬ METAL PENTHOUSE SCREEN
- ⑭ OVERHEAD ROLLING DOOR
- ⑮ EXISTING BUILDING - NEW SIGNAGE, AWNING, PAINT & GLASS AT GARAGE OPENING
- ⑯ METAL MECHANICAL SCREEN



1348 4TH STREET NE
 *CONTENT ON PAGE EDITED OR ADDED

WEST ELEVATION | NEW YORK AVE
CONSOLIDATED PUD APPLICATION

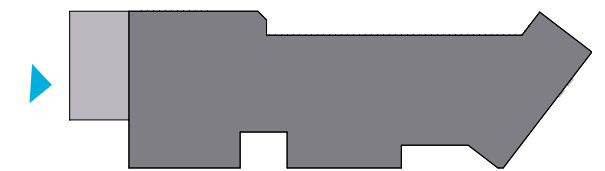


- ① BALCONY PLANTERS
- ② GREEN SCREEN
- ③A LOW IRON GLASS - STOREFRONT GLAZING
- ③B LOW IRON GLASS - ALUMINIUM FRAMED GLAZING
- ④ METAL RAILINGS

- ⑤ GLASS RAILING AT ROOFTOP
- ⑥ FIN EXTENSION AT CURTAIN WALL
- ⑦ BRICK AT PODIUM
- ⑧ DARK GRAY LOUVERS
- ⑨ RETAIL PAINTED METAL
- ⑩ PAINTED CMU

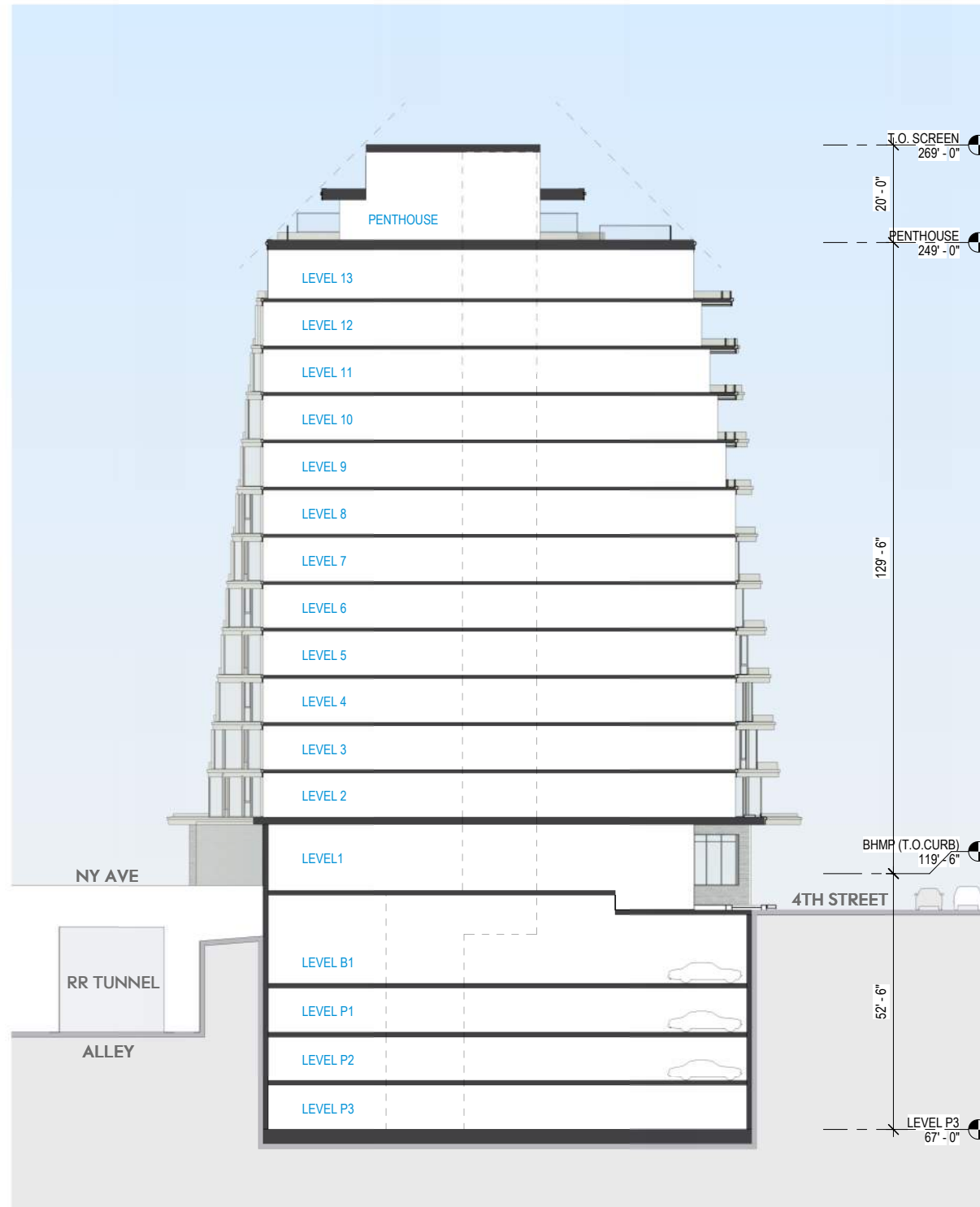
- ⑪ METAL AT TOWER
- ⑫ CANOPY
- ⑬ METAL PENTHOUSE SCREEN
- ⑭ OVERHEAD ROLLING DOOR
- ⑮ EXISTING BUILDING - NEW SIGNAGE, AWNING, PAINT & GLASS AT GARAGE OPENING

- ⑯ METAL MECHANICAL SCREEN



1348 4TH STREET NE
 *CONTENT ON PAGE EDITED OR ADDED

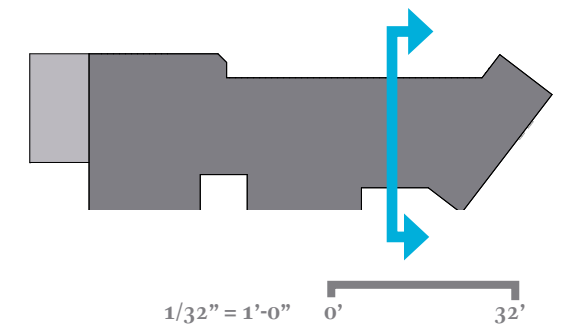
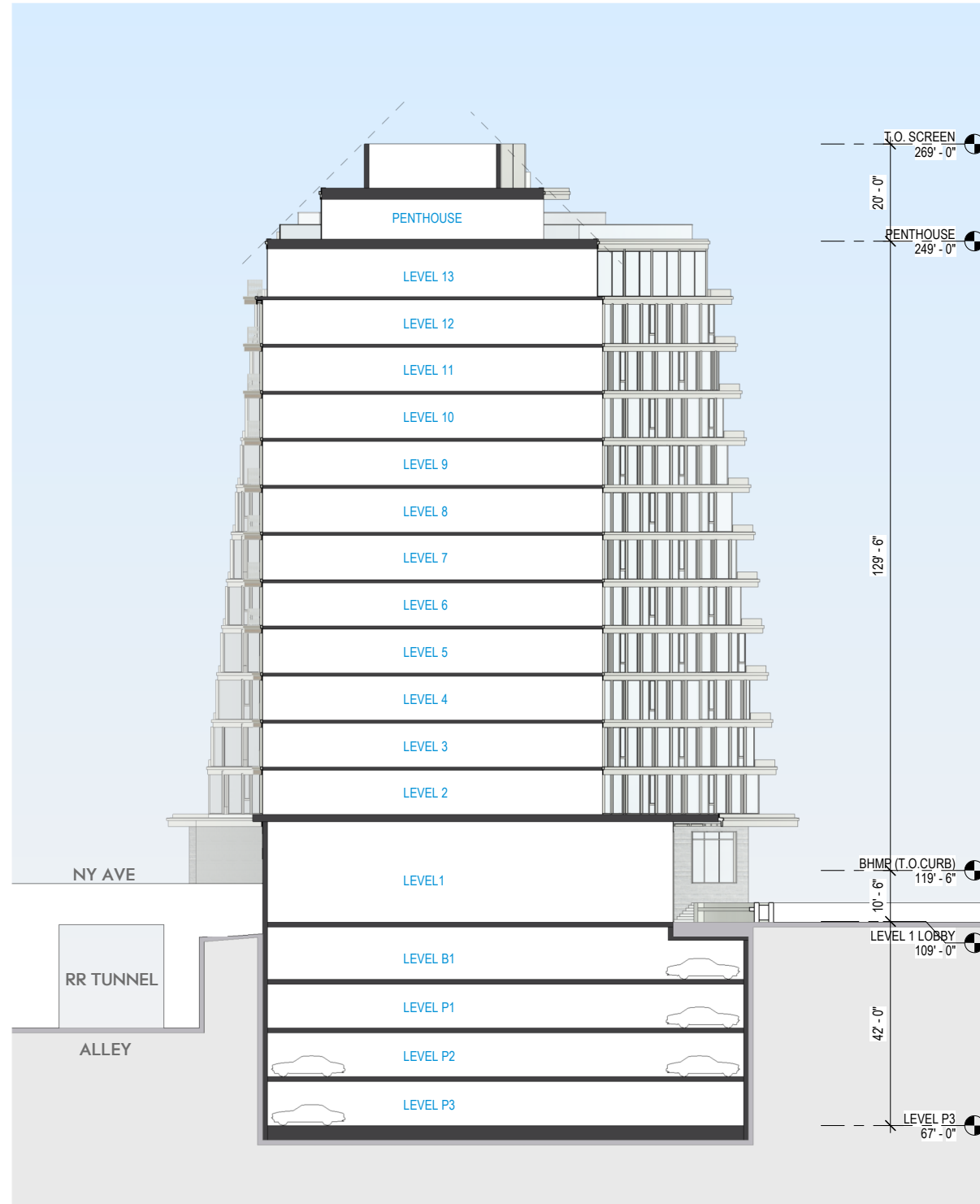
SOUTH ELEVATION
CONSOLIDATED PUD APPLICATION



1/32" = 1'-0" 0' 32'

1348 4TH STREET NE

**BUILDING EAST/WEST SECTION 1
CONSOLIDATED PUD APPLICATION**

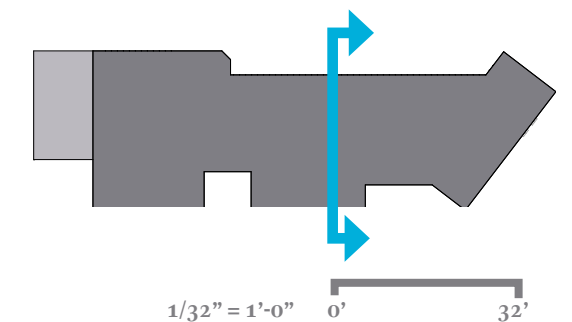
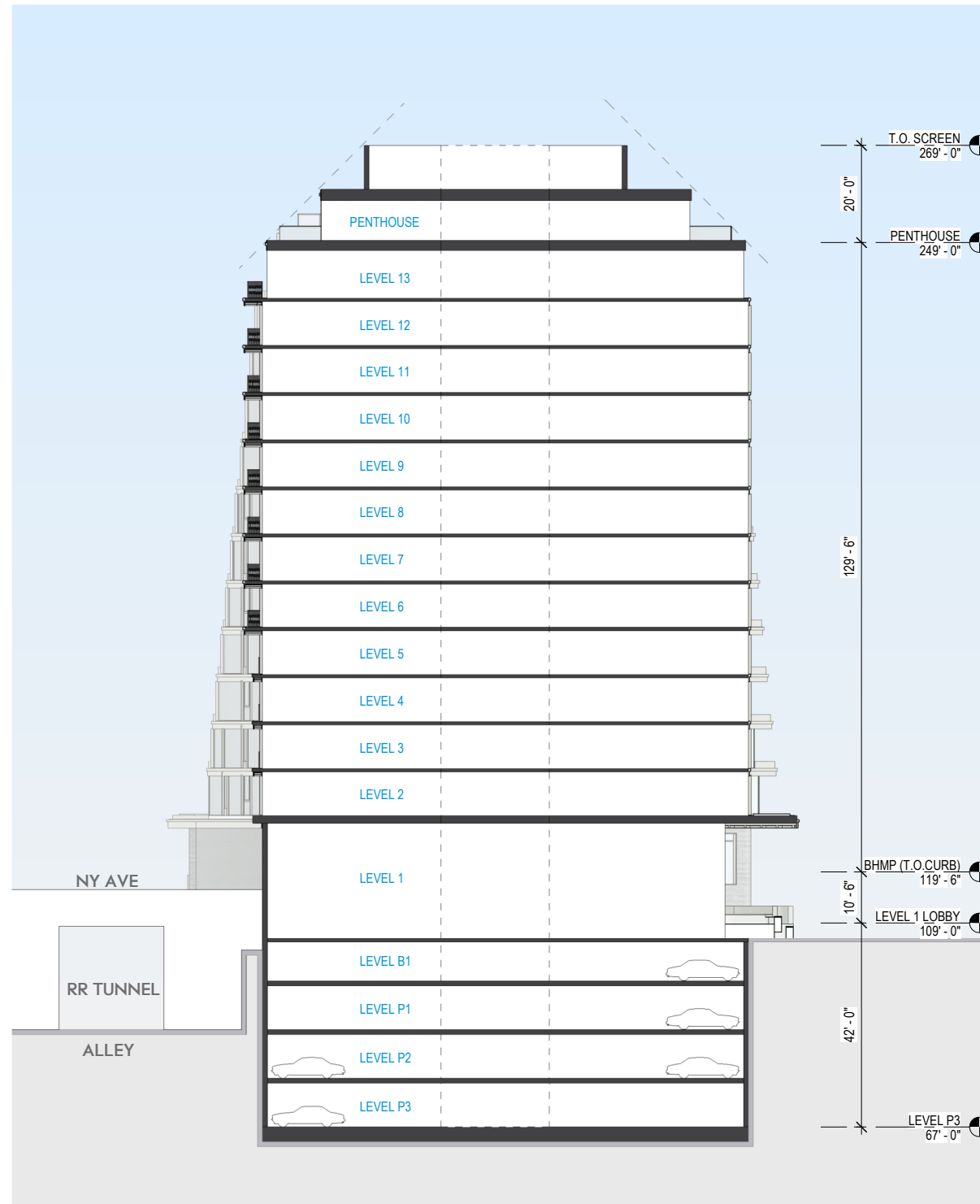


1/32" = 1'-0" 0' 32'

BUILDING EAST/WEST SECTION 2
CONSOLIDATED PUD APPLICATION

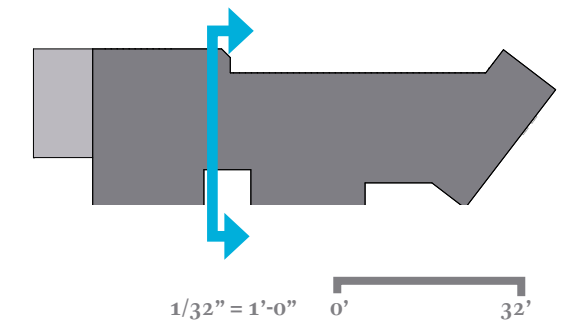
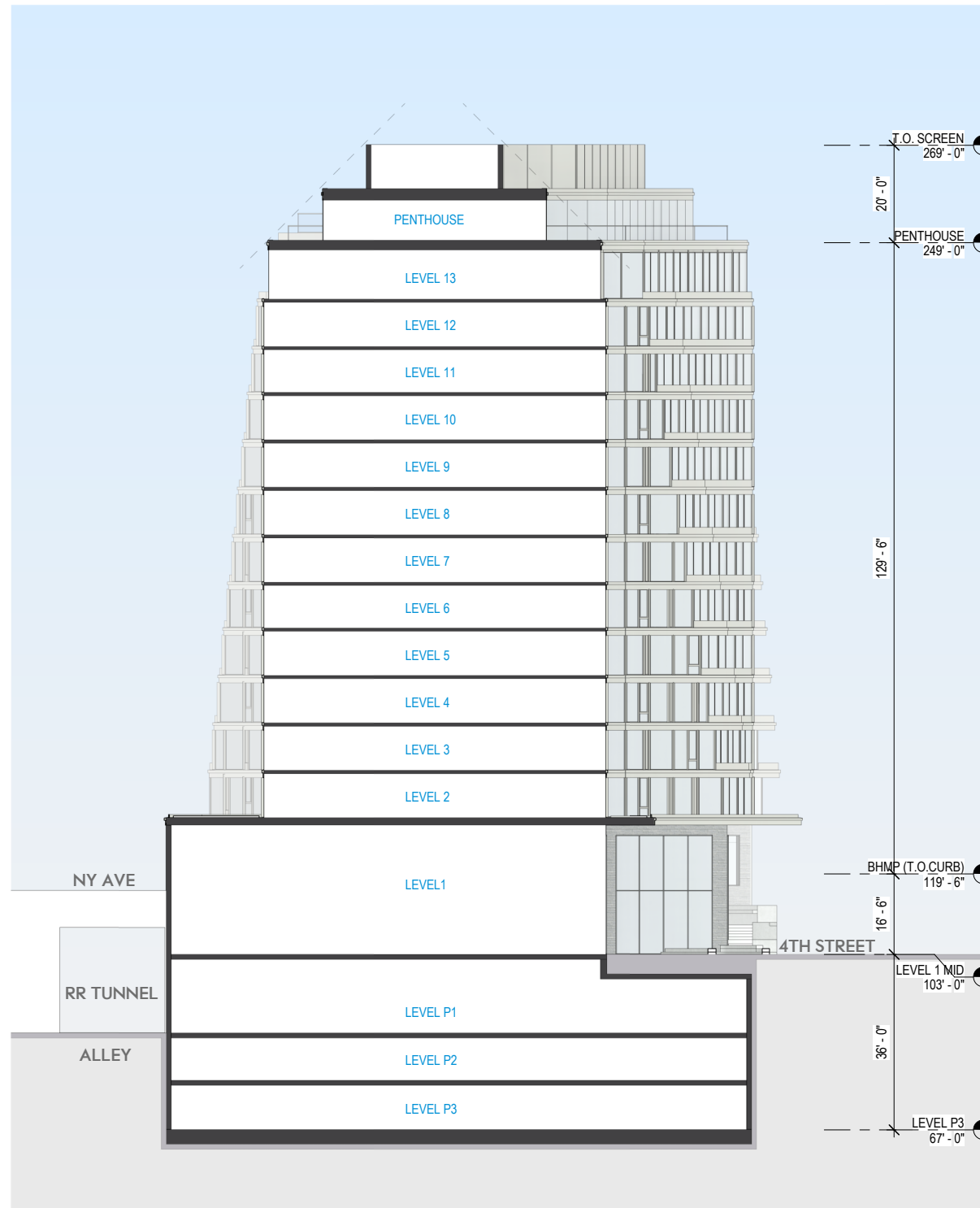
December 2021

1348 4TH STREET NE



1348 4TH STREET NE
 *CONTENT ON PAGE EDITED OR ADDED

BUILDING EAST/WEST SECTION 3
CONSOLIDATED PUD APPLICATION



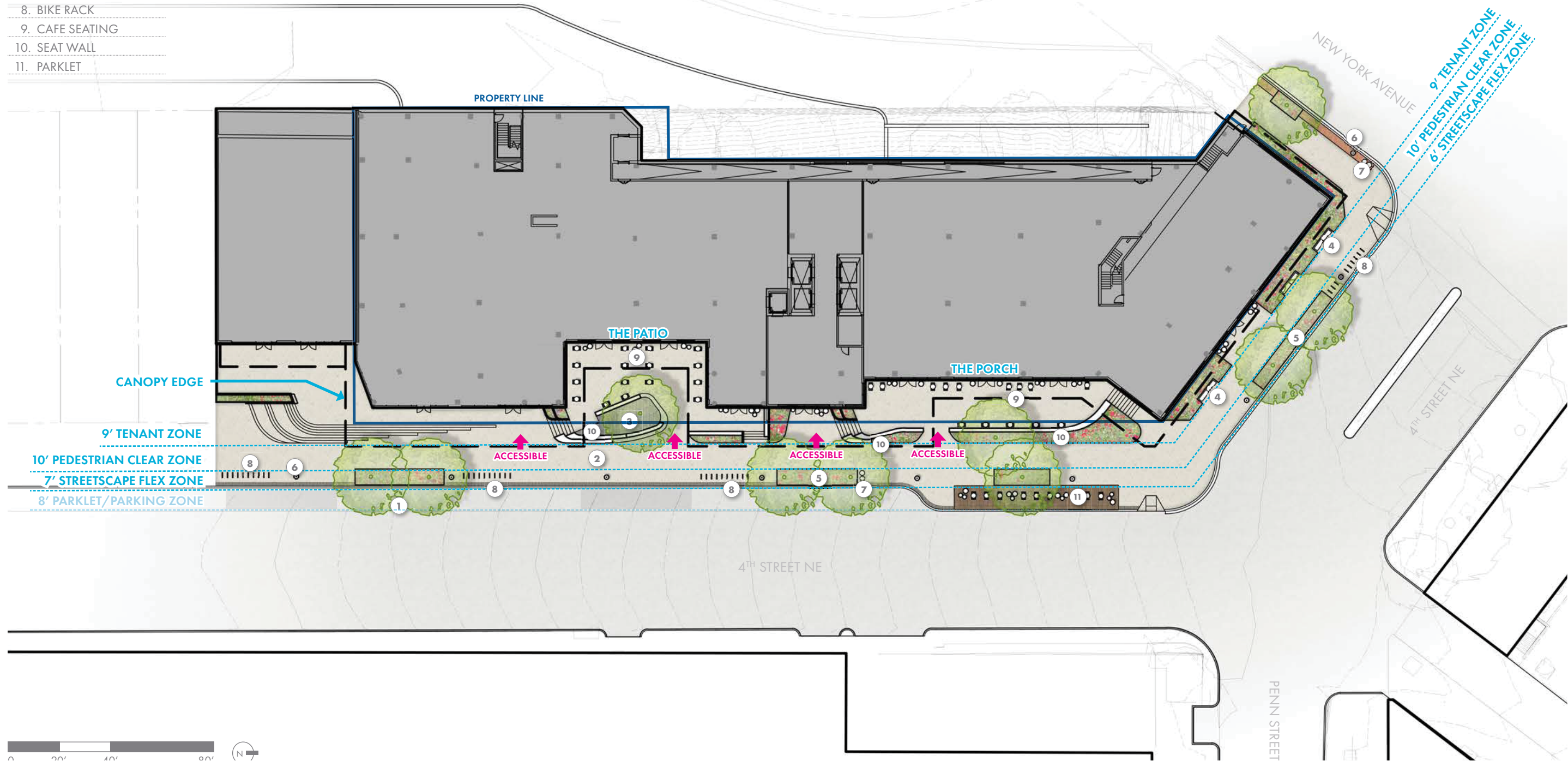
1348 4TH STREET NE

BUILDING EAST/WEST SECTION 4 CONSOLIDATED PUD APPLICATION

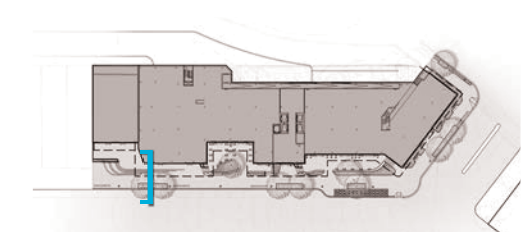
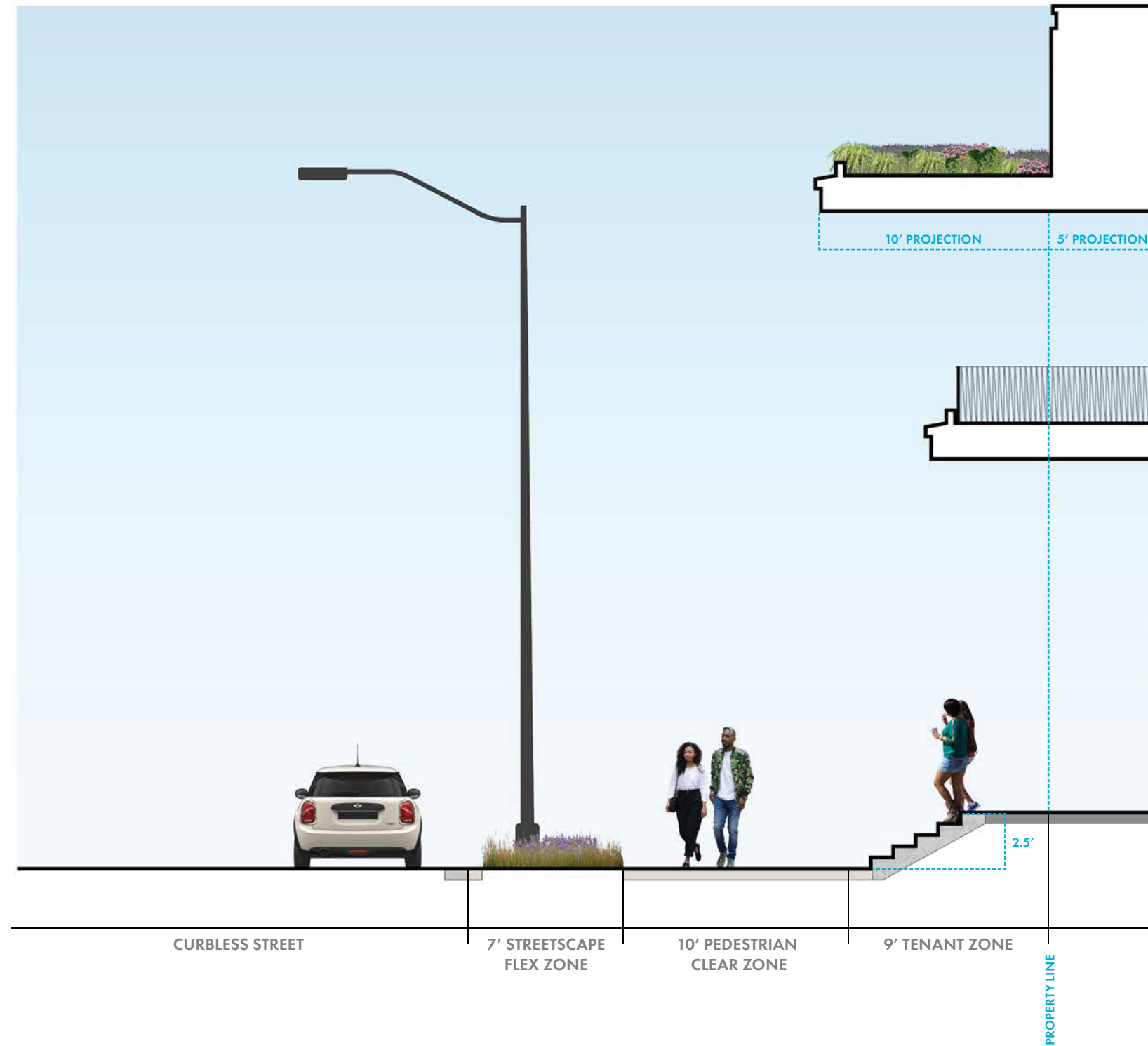
December 2021

LANDSCAPE PLAN

- 1. STREET TREES
- 2. CONCRETE
- 3. STONE PAVERS
- 4. BENCH
- 5. AT-GRADE PLANTER
- 6. STREET LIGHT
- 7. TRASH CAN
- 8. BIKE RACK
- 9. CAFE SEATING
- 10. SEAT WALL
- 11. PARKLET



• ELEMENTS IN PUBLIC SPACE ARE SUBJECT TO APPROVAL UNDER THE DC CONSTRUCTION CODE AND/OR THE PUBLIC SPACE PERMITTING PROCESS, AS REVELANT, AND ALONG WITH CORRESPONDING AND CONNECTED ELEMENTS IN PRIVATE SPACE MAY BE MODIFIED AS A RESULT.



• ELEMENTS IN PUBLIC SPACE ARE SUBJECT TO APPROVAL UNDER THE DC CONSTRUCTION CODE AND/OR THE PUBLIC SPACE PERMITTING PROCESS, AS RELEVANT, AND ALONG WITH CORRESPONDING AND CONNECTED ELEMENTS IN PRIVATE SPACE MAY BE MODIFIED AS A RESULT.