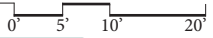
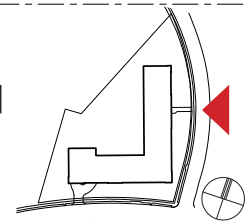


BUILDING ELEVATIONS

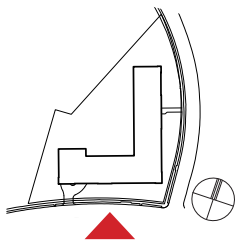


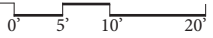
EAST ELEVATION



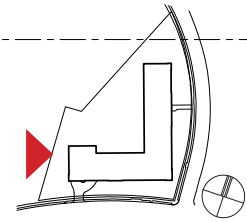
SOUTH ELEVATION

SEE ELEVATION
DETAIL ON 3-13

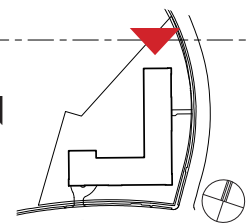




WEST ELEVATION



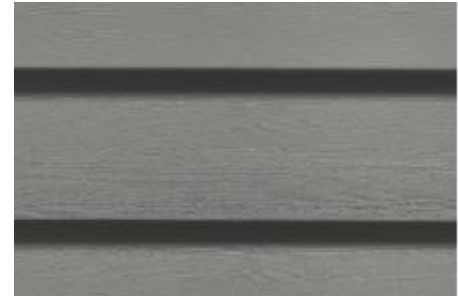
NORTH ELEVATION





COPING
BENJAMIN MOORE
2133-10 ONYX

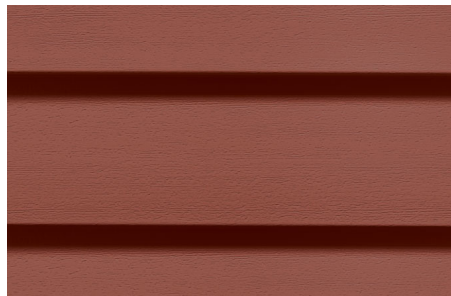
CORNICE TRIM
BENJAMIN MOORE
2140-50 GRAY HORSE



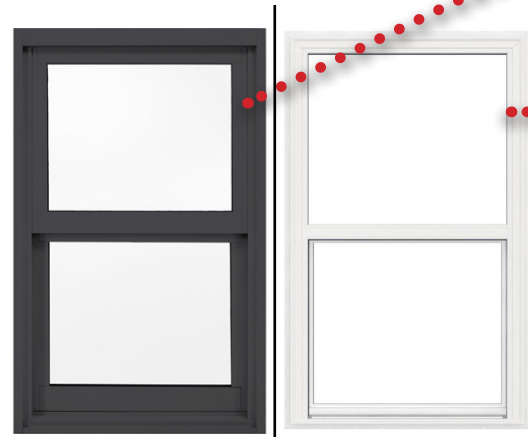
(BACK ELEVATIONS ONLY)
VINYL SIDING FIELD
CERTAINTED: CHARCOAL GRAY



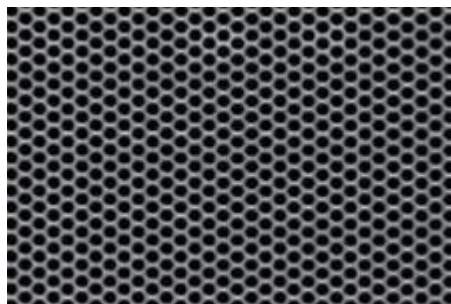
FIBER CEMENT SIDING
ALLURA - KNIGHTS ARMOR
6" EXPOSURE



(BACK ELEVATIONS ONLY)
VINYL SIDING ACCENT
CERTAINTED: AUTUMN RED



MI WINDOWS VINYL 1-OVER 1
SINGLE HUNG WINDOWS. WHITE
EXCEPT AT 4TH LEVEL SIDING
CONDITIONS OVER FIELD BRICK



(PARKING GARAGE WALLS
ONLY) PERFORATED METAL
INFILL PANELS, PAINTED TO
MATCH COPING



FOUNDATION VENEER YORK
SPLIT FACE BLOCK "CHARCOAL"



ACCENT BRICK VENEER
CONTINENTAL BRICK -
STANDARD #455 MOD. WITH
SPECMIX "FIRESTONE" MORTAR



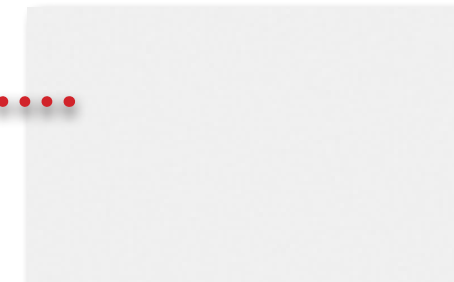
PERFORATED CORRUGATED
METAL SCRIM - HENDRICK
"DOVE GREY"



FIELD BRICK VENEER
PALMETTO BRICK: WHITESTONE
WIRECUT WITH SPECMIX
"ANTIQUE WHITE" MORTAR



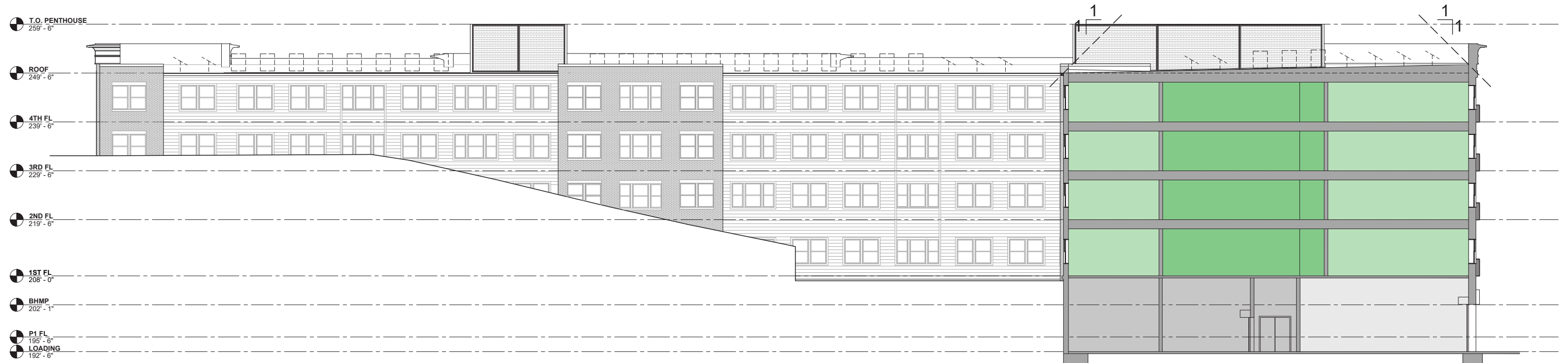
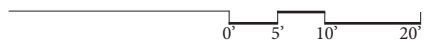
ALUMINUM COPING
RAL 7005 "MOUSE GREY"



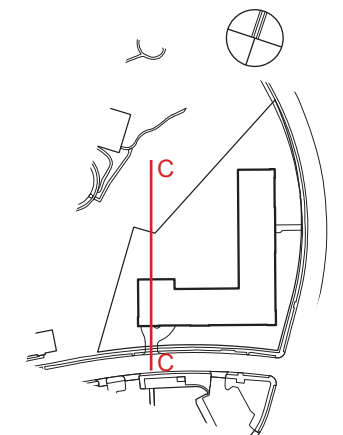
ALUMINUM STOREFRONT AND
SLIDING PATIO DOORS - WHITE

NOTE: DEMISING WALLS, QUANTITY AND SIZE OF UNITS, EGRESS WELLS AND RETAINING WALLS, COMMON, UTILITY AND AMENITY SPACES, STAIRS AND ELEVATORS, PARKING AND LOADING CONFIGURATIONS, ARE PRELIMINARY. FINAL LAYOUTS MAY VARY.

BUILDING SECTIONS



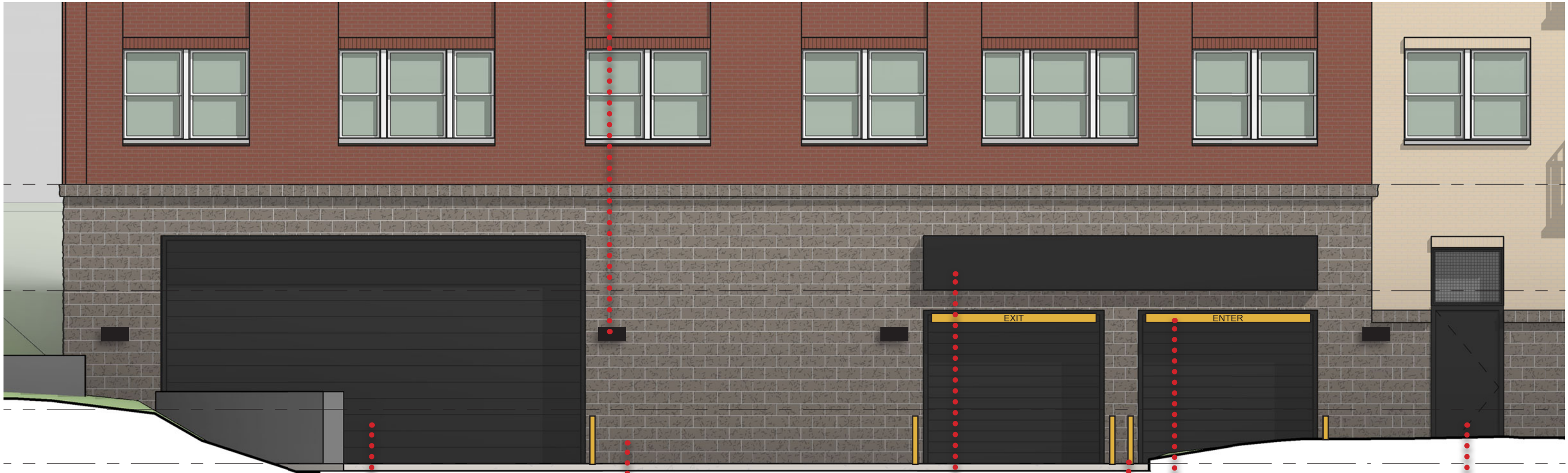
SECTION C-C



- COMMON / AMENITY
- DWELLING UNITS
- CIRCULATION
- PARKING
- BUILDING SERVICES

SHEET 3-11

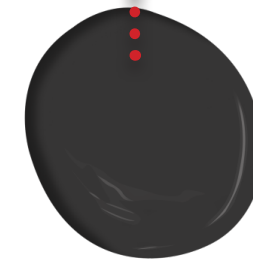
LED WALL PACK
LITHONIA #OWP LED



LOADING DOOR



FOUNDATION VENEER
YORK SPLIT FACE BLOCK "CHARCOAL"



DOORS, TRIM, AND ACCENT:
BENJAMIN MOORE
2133-10 ONYX
(TO MATCH COPING AT LIGHT
BRICK WALLS)

BOLLARDS AND
CLEARANCE BARS AT VEHICLE
ENTRANCES

BIKE/PEDESTRIAN
ENTRY