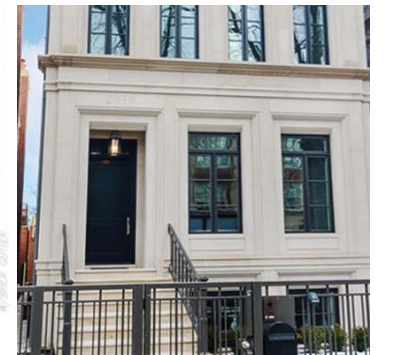
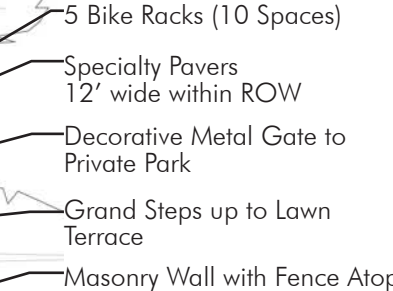
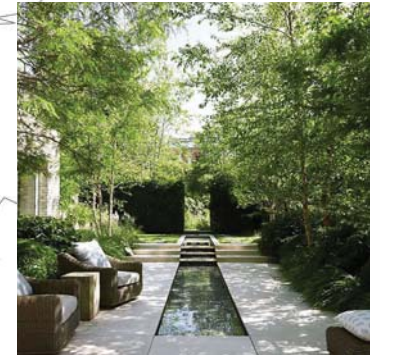
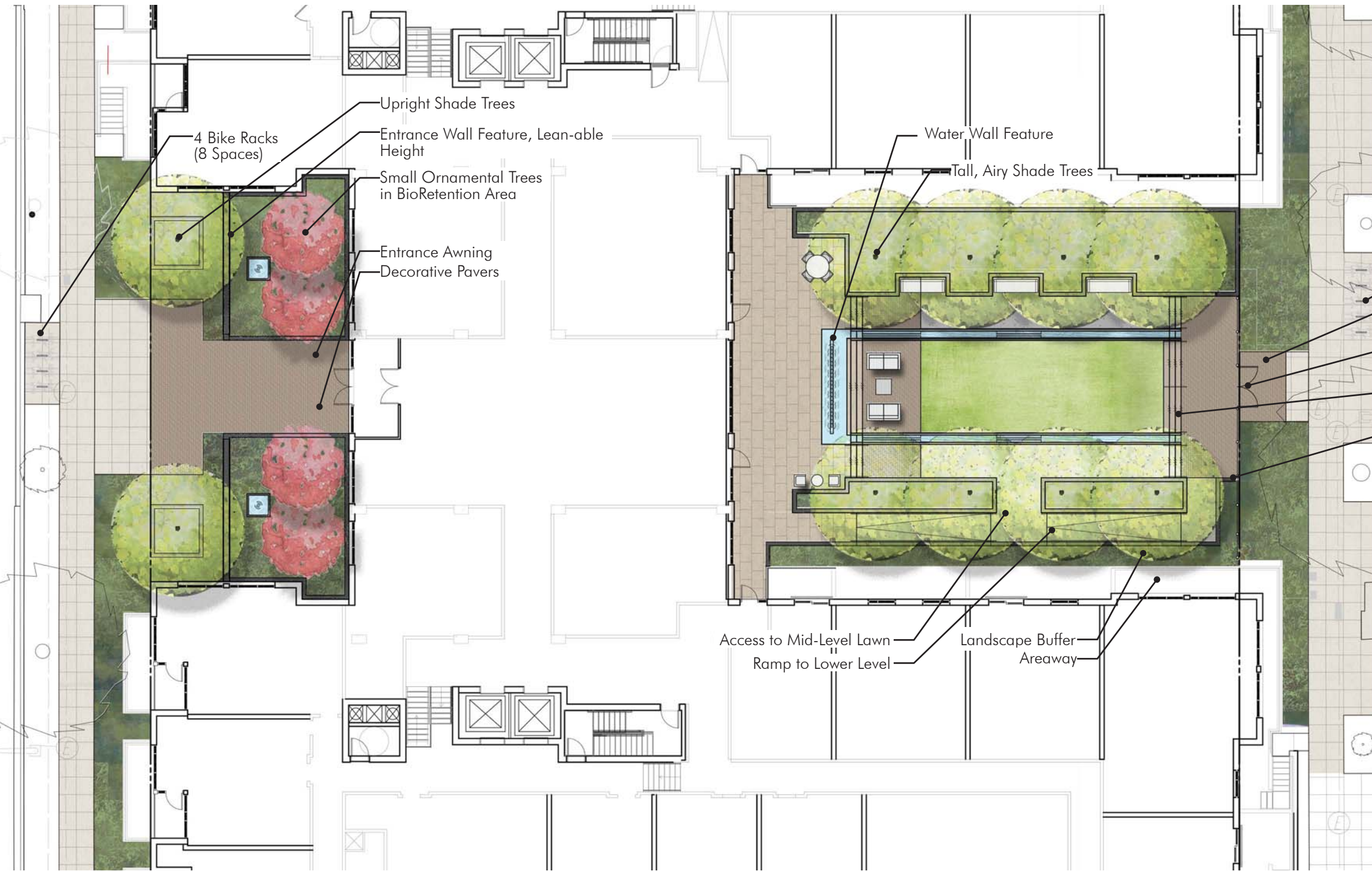


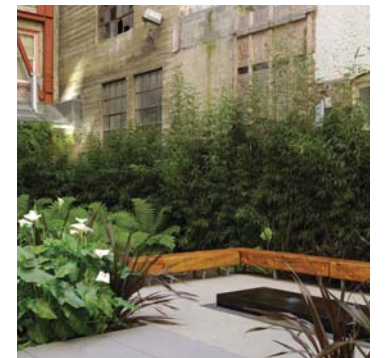
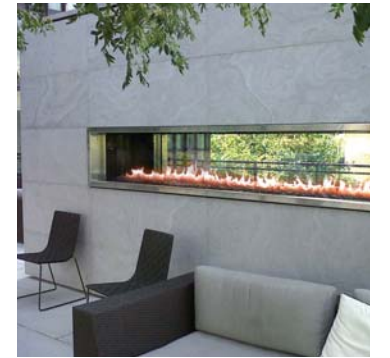
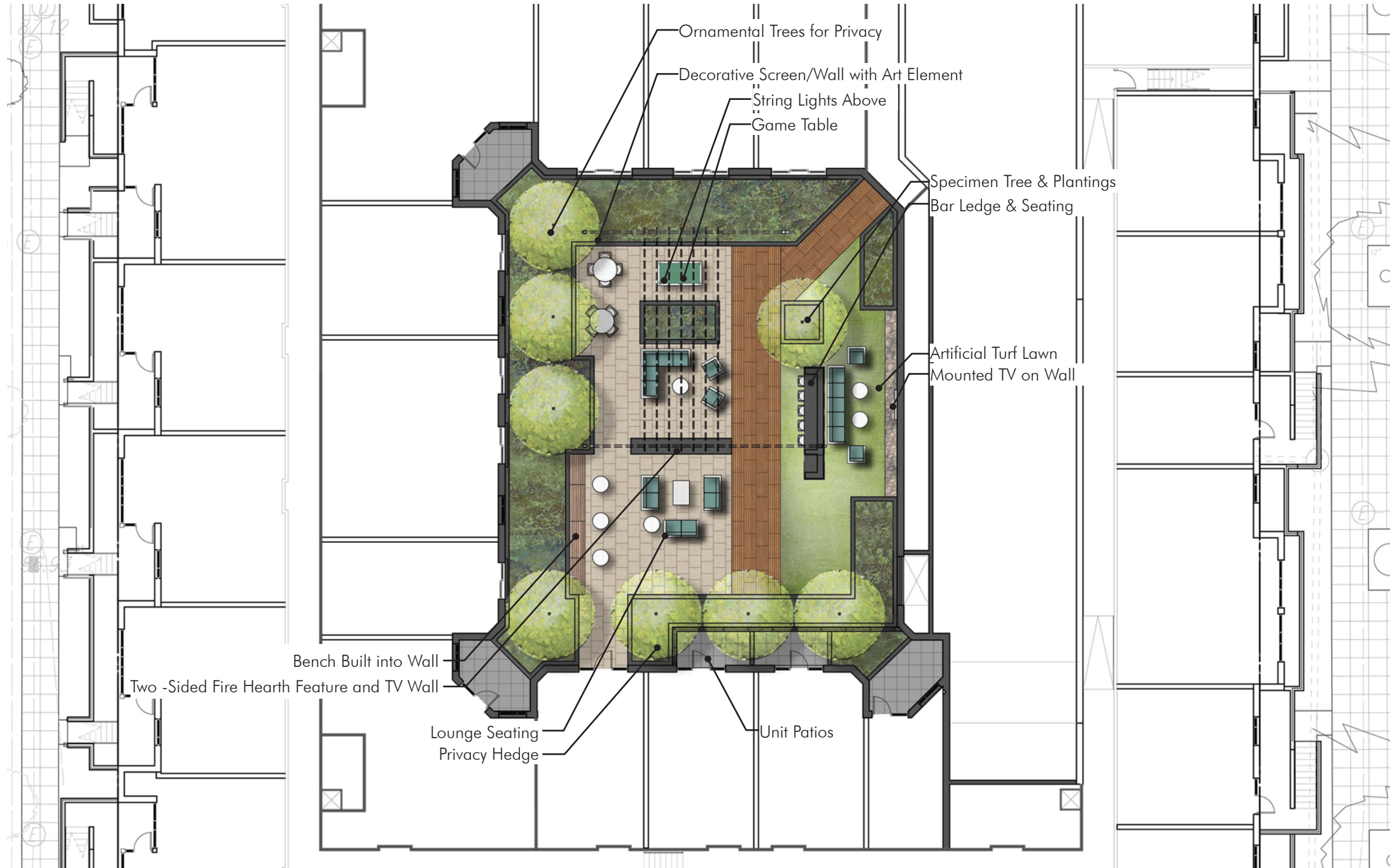
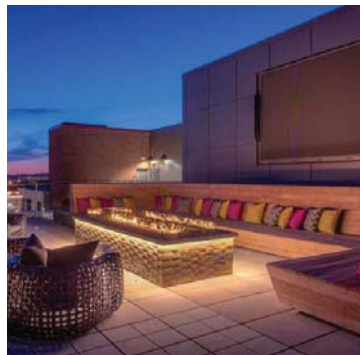
NOTE:
 PLANT SPECIES SELECTIONS IDENTIFIED ON THIS PLAN ARE SHOWN TO ILLUSTRATE DESIGN INTENT AT MATURITY ONLY. THE PURPOSE IS TO GENERALLY DEFINE PLANT SIZE, CHARACTER AND LOCATION. REFINEMENT TO THE PLANTING DESIGN AND FINAL SELECTION OF ALL PLANT MATERIALS CONSISTENT WITH THE SPECIES SHOWN SHALL BE DEVELOPED DURING DETAILED DESIGN PHASE OF THE WORK. SHADE TREES SHALL BE INSTALLED AT 2-1/2"-3" CALIPER MIN. AND ORNAMENTAL TREES SHALL BE INSTALLED AT 1-1/2"-2" CALIPER.



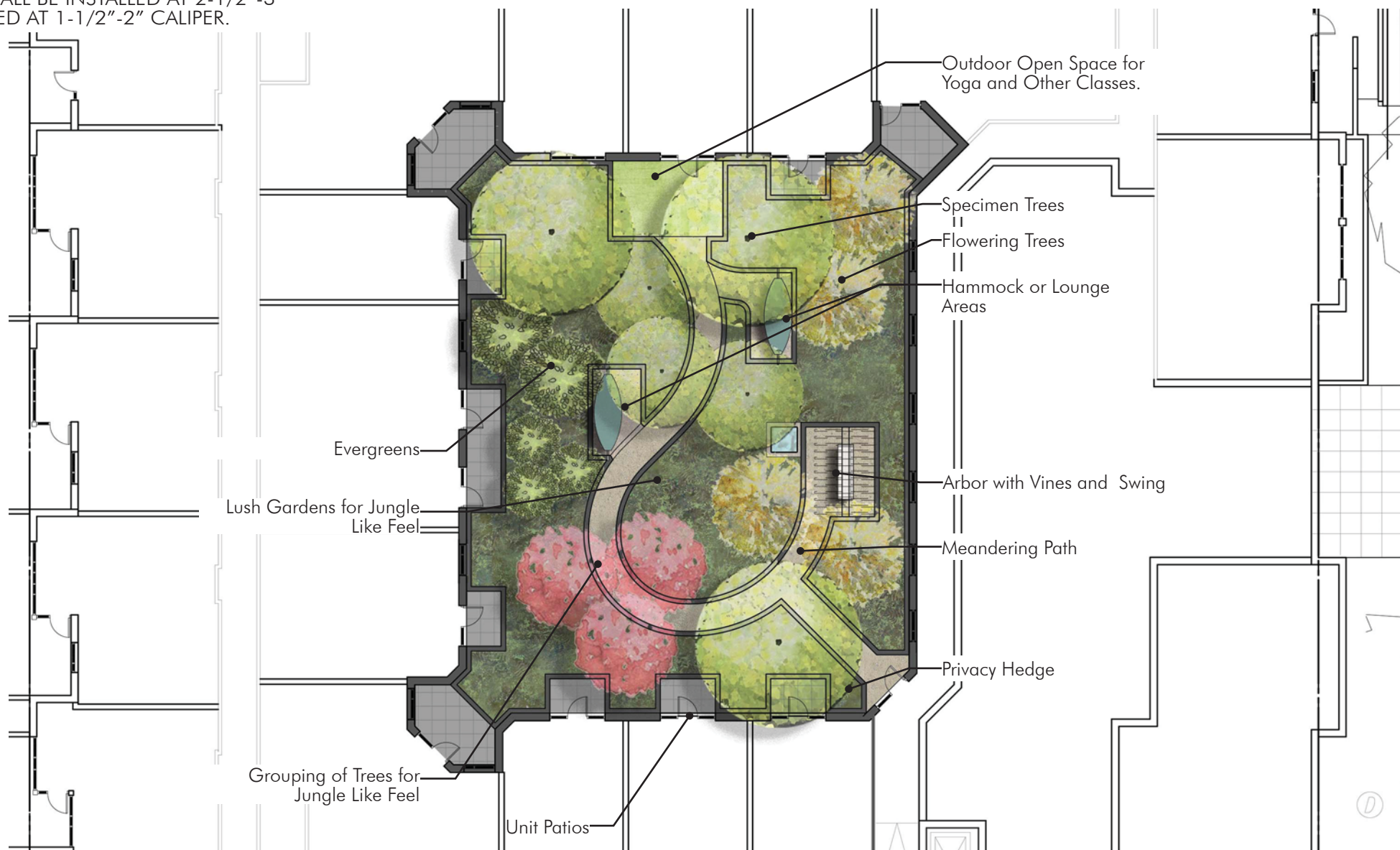
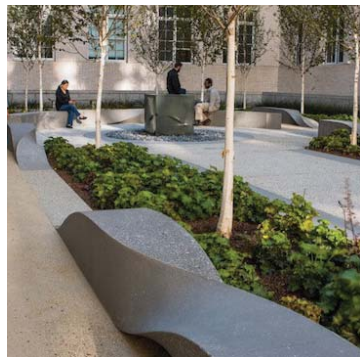
NOTE:
 PLANT SPECIES SELECTIONS IDENTIFIED ON THIS PLAN ARE SHOWN TO ILLUSTRATE DESIGN INTENT AT MATURITY ONLY. THE PURPOSE IS TO GENERALLY DEFINE PLANT SIZE, CHARACTER AND LOCATION. REFINEMENT TO THE PLANTING DESIGN AND FINAL SELECTION OF ALL PLANT MATERIALS CONSISTENT WITH THE SPECIES SHOWN SHALL BE DEVELOPED DURING DETAILED DESIGN PHASE OF THE WORK. SHADE TREES SHALL BE INSTALLED AT 2-1/2"-3" CALIPER MIN. AND ORNAMENTAL TREES SHALL BE INSTALLED AT 1-1/2"-2" CALIPER.



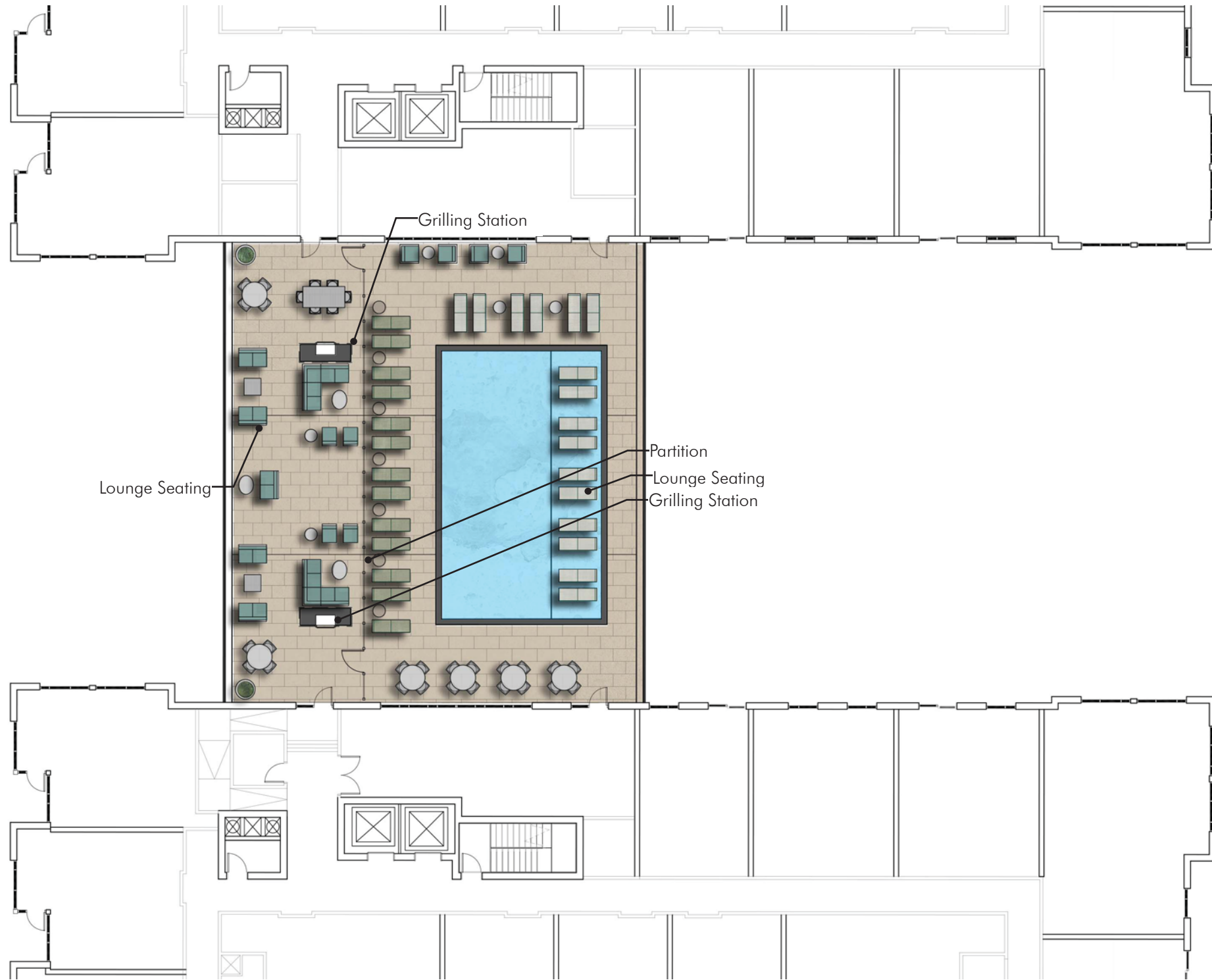
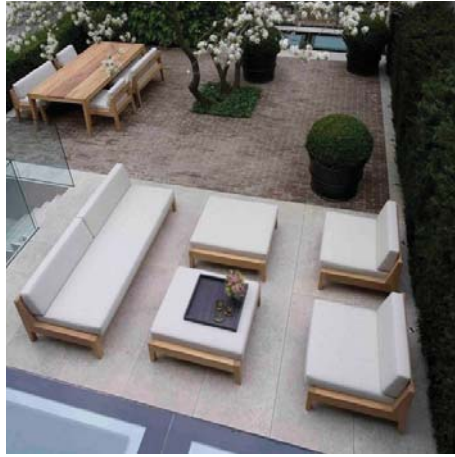
NOTE:
 PLANT SPECIES SELECTIONS IDENTIFIED ON THIS PLAN ARE SHOWN TO ILLUSTRATE DESIGN INTENT AT MATURITY ONLY. THE PURPOSE IS TO GENERALLY DEFINE PLANT SIZE, CHARACTER AND LOCATION. REFINEMENT TO THE PLANTING DESIGN AND FINAL SELECTION OF ALL PLANT MATERIALS CONSISTENT WITH THE SPECIES SHOWN SHALL BE DEVELOPED DURING DETAILED DESIGN PHASE OF THE WORK. SHADE TREES SHALL BE INSTALLED AT 2-1/2"-3" CALIPER MIN. AND ORNAMENTAL TREES SHALL BE INSTALLED AT 1-1/2"-2" CALIPER.



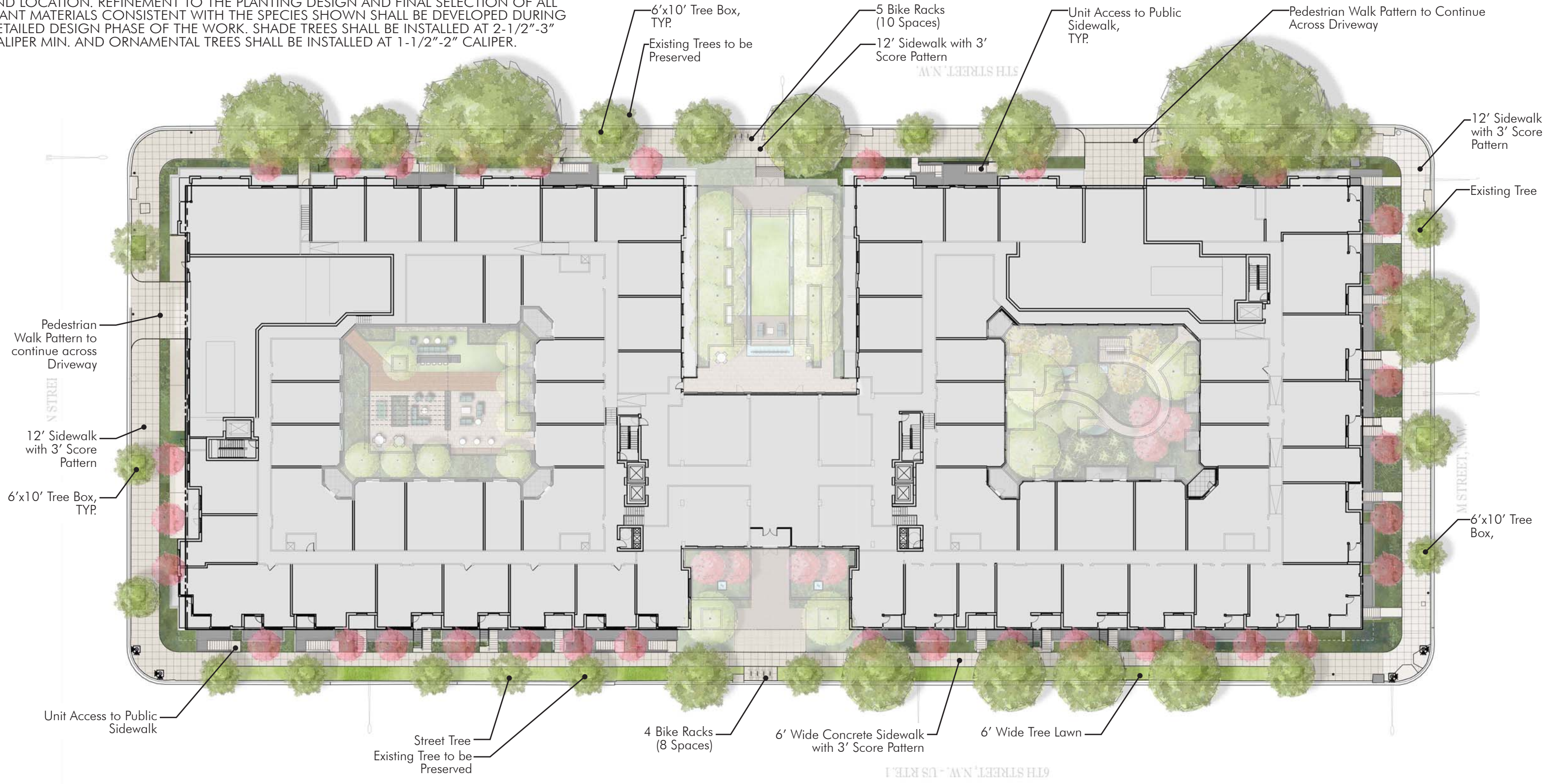
NOTE:
 PLANT SPECIES SELECTIONS IDENTIFIED ON THIS PLAN ARE SHOWN TO ILLUSTRATE DESIGN INTENT AT MATURITY ONLY. THE PURPOSE IS TO GENERALLY DEFINE PLANT SIZE, CHARACTER AND LOCATION. REFINEMENT TO THE PLANTING DESIGN AND FINAL SELECTION OF ALL PLANT MATERIALS CONSISTENT WITH THE SPECIES SHOWN SHALL BE DEVELOPED DURING DETAILED DESIGN PHASE OF THE WORK. SHADE TREES SHALL BE INSTALLED AT 2-1/2"-3" CALIPER MIN. AND ORNAMENTAL TREES SHALL BE INSTALLED AT 1-1/2"-2" CALIPER.



NOTE:
 PLANT SPECIES SELECTIONS IDENTIFIED ON THIS PLAN ARE SHOWN TO ILLUSTRATE DESIGN INTENT AT MATURITY ONLY. THE PURPOSE IS TO GENERALLY DEFINE PLANT SIZE, CHARACTER AND LOCATION. REFINEMENT TO THE PLANTING DESIGN AND FINAL SELECTION OF ALL PLANT MATERIALS CONSISTENT WITH THE SPECIES SHOWN SHALL BE DEVELOPED DURING DETAILED DESIGN PHASE OF THE WORK. SHADE TREES SHALL BE INSTALLED AT 2-1/2"-3" CALIPER MIN. AND ORNAMENTAL TREES SHALL BE INSTALLED AT 1-1/2"-2" CALIPER.



NOTE:
 PLANT SPECIES SELECTIONS IDENTIFIED ON THIS PLAN ARE SHOWN TO ILLUSTRATE DESIGN INTENT AT MATURITY ONLY. THE PURPOSE IS TO GENERALLY DEFINE PLANT SIZE, CHARACTER AND LOCATION. REFINEMENT TO THE PLANTING DESIGN AND FINAL SELECTION OF ALL PLANT MATERIALS CONSISTENT WITH THE SPECIES SHOWN SHALL BE DEVELOPED DURING DETAILED DESIGN PHASE OF THE WORK. SHADE TREES SHALL BE INSTALLED AT 2-1/2"-3" CALIPER MIN. AND ORNAMENTAL TREES SHALL BE INSTALLED AT 1-1/2"-2" CALIPER.



Streetscape Trees



CHINESE ELM
Ulmus parvifolia



KENTUCKY COFFEE TREE
Gymnocladus dioica

Site Specimen Trees



HONEY LOCUST
Gleditsia triacanthos
"Moraine"



LONDON PLANE TREE
Platanus x acerifolia

Ornamental Trees



SERVICEBERRY
Amelanchier x grandiflora
'Autumn Brilliance'



RIVER BIRCH
Betula nigra



EASTERN REDBUD
Cercis canadensis
'Silver Cloud'



YELLOWWOOD
Cladrastis kentukea

Shrubs



INKBERRY
Ilex glabra 'Shamrock'



HENRY'S GARNET SWEETSPIRE
Itea virginica 'Henry's Garnet'



RUBY SPICE SUMMERSWEET
Clethra alnifolia 'Ruby Spice'

Perennials/Ornamental Grasses/ Ferns



JACOB CLINE BEE BALM
Monarda didyma 'Jacob Cline'



BURGUNDY SWITCH GRASS
Panicum virgatum
'Shenendoah'



TUSSOCK SEDGE
Carex stricta



SOFT RUSH
Juncus effusus



LITTLE BLUESTEM
Schizachyrium scoparium



ISANTI REDOSIER DOGWOOD
Cornus sericea 'Isanti'



RED SPRITE WINTERBERRY
Ilex verticillata 'Red Sprite'



BUTTONBUSH
Cephalanthus occidentalis



PURPLE CONEFLOWER
Echinacea purpurea



BLAZING STAR
Liatris spicata



BLACK-EYED SUSAN
Rudbeckia fulgida var
sullivantii 'Goldsturm'

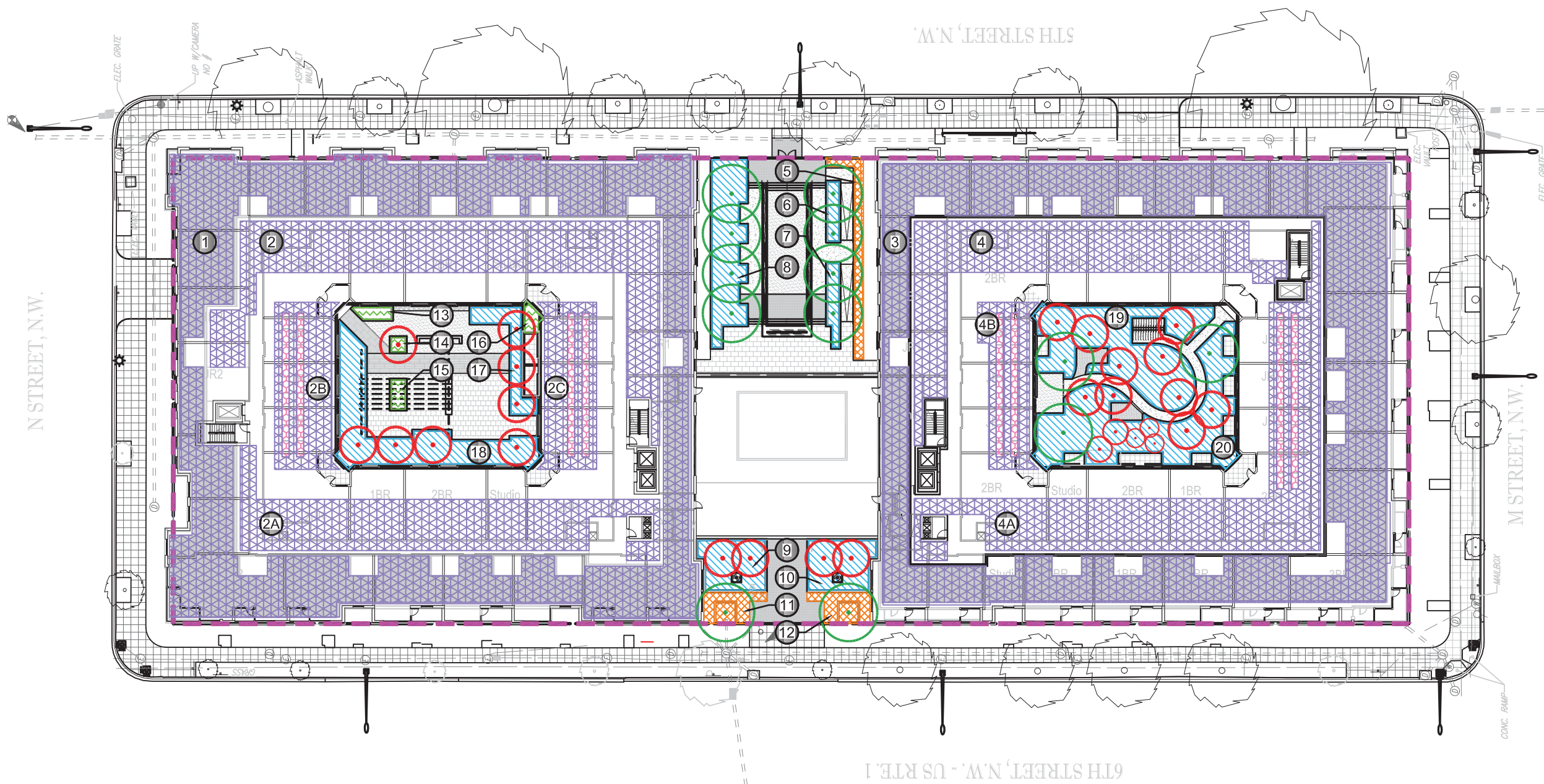


BLUE FLAG IRIS
Iris versicolor



JOE PYE WEED
Eutrochium dubium 'Little Joe'

NOTE:
PLANT SPECIES SELECTIONS IDENTIFIED ON THIS PLAN ARE SHOWN TO ILLUSTRATE DESIGN INTENT AT MATURITY ONLY. THE PURPOSE IS TO GENERALLY DEFINE PLANT SIZE, CHARACTER AND LOCATION. REFINEMENT TO THE PLANTING DESIGN AND FINAL SELECTION OF ALL PLANT MATERIALS CONSISTENT WITH THE SPECIES SHOWN SHALL BE DEVELOPED DURING DETAILED DESIGN PHASE OF THE WORK. SHADE TREES SHALL BE INSTALLED AT 2-1/2"-3" CALIPER MIN. AND ORNAMENTAL TREES SHALL BE INSTALLED AT 1-1/2"-2" CALIPER.



LANDSCAPE SQUARE FOOTAGE TABLE				
AREA #	>24 ON GRADE (SF)	BIORETENTION (SF)	GREENROOF ≥8" (SF)	GREENROOF <8" (SF)
1				11,340
2				4,621
2A				3,324
2B				1,550
2C				1,411
3				10,952
4				3,608
4A				4,864
4B				1,180
5	271			
6		110		
7		138		
8		860		
9		497		
10		497		
11	231			
12	231			
13			64	
14			32	
15			66	
16			63	
17			308	
18			1,271	
19			1,611	
20			1,785	
TOTAL	733	7,077	225	42,850

LEGEND

- 

LANDSCAPE AREAS WITH A SOIL DEPTH ≥ 24"
- 

BIORETENTION FACILITIES
- 

GREEN ROOF ≥ 8" GROWTH MEDIUM
- 

GREEN ROOF < 8" GROWTH MEDIUM
- 

SOLAR PANELS
- 

NEW TREE WITH LESS THAN 40-FOOT CANOPY SPREAD
- 

NEW TREE WITH 40-FOOT OR GREATER CANOPY SPREAD
- 

LANDSCAPE AREA IDENTIFICATION
- 

PROPERTY LINE EXTENT OF GAR AREA

NOTE:
 PLANT SPECIES SELECTIONS IDENTIFIED ON THIS PLAN ARE SHOWN TO ILLUSTRATE DESIGN INTENT AT MATURITY ONLY. THE PURPOSE IS TO GENERALLY DEFINE PLANT SIZE, CHARACTER AND LOCATION. REFINEMENT TO THE PLANTING DESIGN AND FINAL SELECTION OF ALL PLANT MATERIALS CONSISTENT WITH THE SPECIES SHOWN SHALL BE DEVELOPED DURING DETAILED DESIGN PHASE OF THE WORK. SHADE TREES SHALL BE INSTALLED AT 2-1/2"-3" CALIPER MIN. AND ORNAMENTAL TREES SHALL BE INSTALLED AT 1-1/2"-2" CALIPER.

Green Area Ratio Scoresheet						
★ ★ ★	Address	1200 5TH STREET NW	Square	Lot	Zone District	
	Other		481		RA-2	
			Lot area (sf)	Minimum Score	Multiplier	GAR Score
		Lot size (enter this value first) *	92,395	.4	SCORE:	0.400
Landscape Elements		Square Feet	Factor	Total		
A Landscaped areas (select one of the following for each area)						
1	Landscaped areas with a soil depth < 24"	square feet 0	0.30	-		
2	Landscaped areas with a soil depth ≥ 24"	square feet 733	0.60	439.8		
3	Bioretention facilities	square feet 7,077	0.40	2,830.8		
B Plantings (credit for plants in landscaped areas from Section A)						
1	Groundcovers, or other plants < 2' height	square feet 7,810	0.20	Native Bonus square feet 3,000	1,562.0	
2	Plants ≥ 2' height at maturity - calculated at 9-sf per plant	# of plants 300	2700	0.30	810.0	
3	New trees with less than 40-foot canopy spread - calculated at 50 sq ft per tree	# of trees 27	1350	0.50	675.0	
4	New trees with 40-foot or greater canopy spread - calculated at 250 sq ft per tree	# of trees 13	3250	0.60	1,950.0	
5	Preservation of existing tree 6" to 12" DBH - calculated at 250 sq ft per tree	# of trees	0	0.70	-	
6	Preservation of existing tree 12" to 18" DBH - calculated at 600 sq ft per tree	# of trees	0	0.70	-	
7	Preservation of existing trees 18" to 24" DBH - calculated at 1300 sq ft per tree	# of trees	0	0.70	-	
8	Preservation of existing trees 24" DBH or greater - calculated at 2000 sq ft per tree	# of trees	0	0.80	-	
9	Vegetated wall, plantings on a vertical surface	square feet 1,000	0.60	square feet	600.0	

C Vegetated or "green" roofs					
1	Over at least 2" and less than 8" of growth medium	square feet 42,850	0.60	square feet	25,710.0
2	Over at least 8" of growth medium	square feet 225	0.80	square feet 225	180.0
D Permeable Paving***					
1	Permeable paving over 6" to 24" of soil or gravel	square feet 2,389	0.40	955.6	
2	Permeable paving over at least 24" of soil or gravel	square feet	0.50	-	
E Other					
1	Enhanced tree growth systems***	square feet	0.40	-	
2	Renewable energy generation	square feet 1,400	0.50	700.0	
3	Approved water features	square feet	0.20	-	
		sub-total of sq ft =		70,784	
F Bonuses					
1	Native plant species	square feet 5,325	0.10	532.5	
2	Landscaping in food cultivation	square feet	0.10	-	
3	Harvested stormwater irrigation	square feet	0.10	-	
		Green Area Ratio numerator =		36,946	
*** Permeable paving and structural soil together may not qualify for more than one third of the Green Area Ratio score.					
Total square footage of all permeable paving and enhanced tree growth.					956