

Notes:
The number, size, and location of units, stairs, and elevators are preliminary and shown for illustrative purposes only. Final layouts may vary.

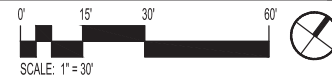
WESLEY HOUSING DEVELOPMENT CORPORATION

2ND AND 3RD FLOOR PLAN

© 2019 - Bonstra | HareSIGN ARCHITECTS

Bonstra | HareSIGN
ARCHITECTS

2ND AND 3RD FLOOR PLAN



1728 Fourteenth Street, NW, Suite 300
Washington, DC 20005-4309
www.bonstra.com 202.588.9373 T

WESLEY HOUSING DEVELOPMENT
CORPORATION
5515 CRENSHAW AVE #50
ALEXANDRIA, VA 22312

RATHGERBERGROSS
ASSOCIATES, P.C.
15071 CRABBS BRANCH WAY
ROCKVILLE, MD 20855
301-596-0073
CAPITOL ENGINEERING GROUP
1825 K STREET NW
SUITE 213
WASHINGTON, DC 20006
202-216-0039

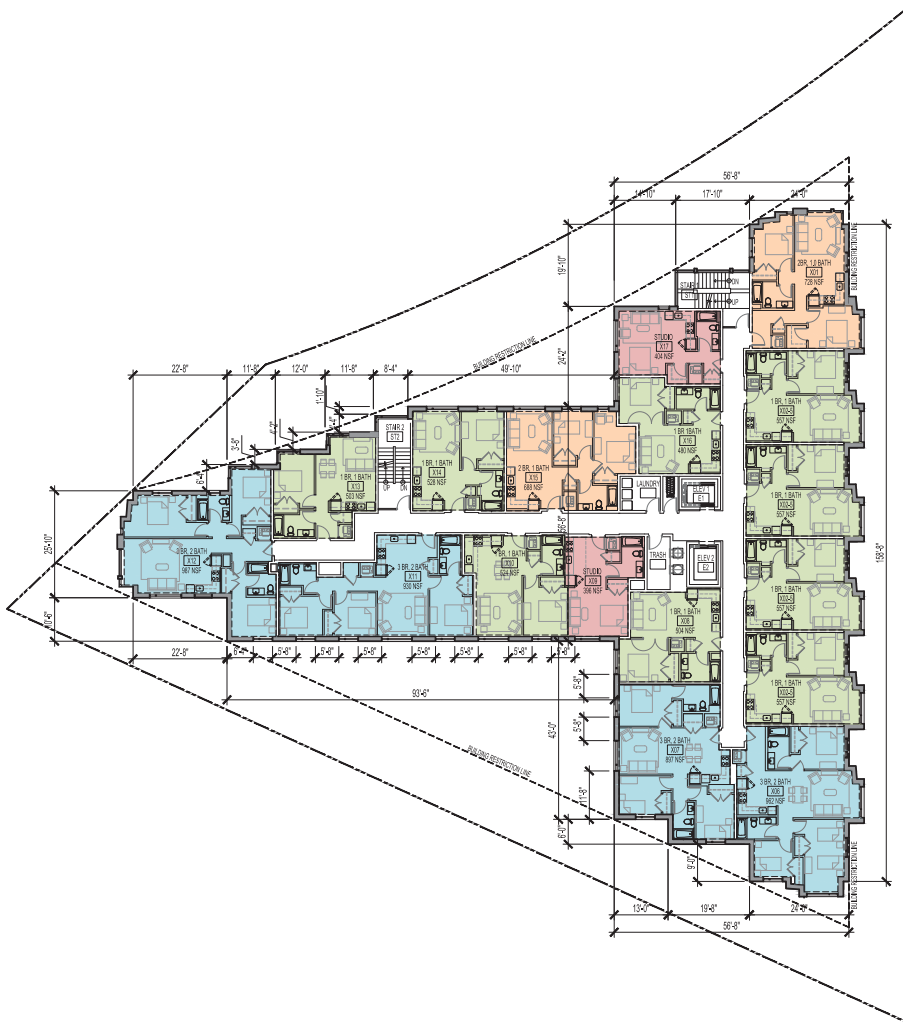
1 HAWAII AVENUE
11 HAWAII AVENUE, NE
WASHINGTON, DC 20001

REVISIONS

1	PRE-HEARING SUBMISSION	8/27/19

A1.03

ZONING COMMISSION
District of Columbia
CASE NO.19-01
EXHIBIT NO.34A2

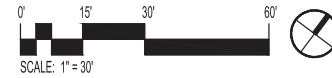


Notes:
The number, size, and location of units, stairs, and elevators are preliminary and shown for illustrative purposes only. Final layouts may vary.

WESLEY HOUSING DEVELOPMENT CORPORATION

4TH FLOOR PLAN

© 2019 - Bonstra | HareSIGN ARCHITECTS



Bonstra | HareSIGN
ARCHITECTS

1728 Fourteenth Street, NW, Suite 300
Washington, DC 20005-4309

www.bonstra.com | 202.588.9373 T

4TH FLOOR PLAN

A1.04

WESLEY HOUSING DEVELOPMENT CORPORATION
5515 CROSBY AVE #40
ALEXANDRIA, VA 22312

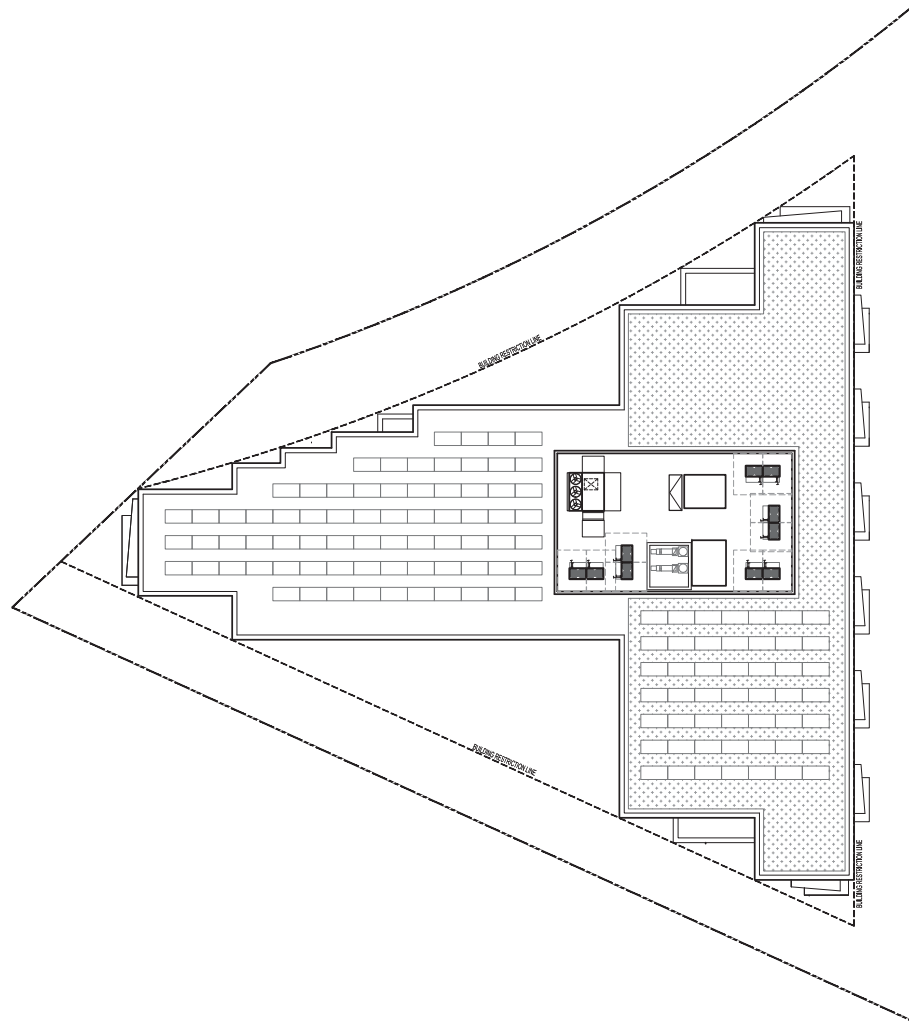
RATHGERBERGROSS ASSOCIATES, P.C.
15071 CRABBS BRANCH WAY
ROCKVILLE, MD 20855
301-595-0073

CAPITOL ENGINEERING GROUP
1825 K STREET NW
SUITE 215
WASHINGTON, DC 20006
202-216-0039

1 HAWAII AVENUE
11 HAWAII AVENUE, NE
WASHINGTON, DC 20001

REVISIONS
1 PRE-HEARING SUBMISSION 8/27/19

DATE: 8/27/19
PROJECT NO.: 2019-244
DRAWN BY: BHM/MS
CHECKED BY: DHEM

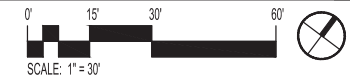


NOTES:
 The number, size, and location of units, stairs, and elevators are preliminary and shown for illustrative purposes only. Final layouts may vary.
 The Applicant intends to provide solar panels, as generally depicted, however, the inclusion of solar panels is subject to availability and proper funding mechanisms.

WESLEY HOUSING DEVELOPMENT CORPORATION

ROOF PLAN

© 2019 - Bonstra | HareSIGN ARCHITECTS



**Bonstra | HareSIGN
ARCHITECTS**

1728 Fourteenth Street, NW, Suite 300
 Washington, DC 20005-4309

www.bonstra.com | 202.588.9373 T

CLIENT
WESLEY HOUSING DEVELOPMENT CORPORATION
 5515 CRENSHAW AVE #40
 ALEXANDRIA, VA 22312

STRUCTURAL ENGINEER
RATHGERBER-GROSS ASSOCIATES, P.C.
 15071 CRABBS BRANCH WAY
 ROCKVILLE, MD 20855
 301-595-0073

MEP ENGINEER
CAPITOL ENGINEERING GROUP
 1825 K STREET NW
 SUITE 215
 WASHINGTON, DC 20006
 202-216-0039

1 HAWAII AVENUE
 1710 HAWAII AVENUE NE
 WASHINGTON, DC 20011

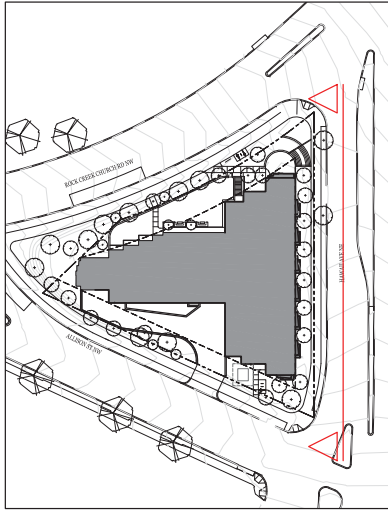
REVISIONS

1 PRE-REVIEW SUBMISSION	8/27/19

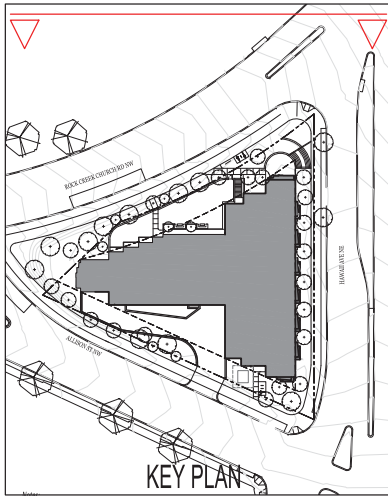
DATE: 8/27/19
 PROJECT NO: 2019-014
 DRAWN BY: BM/AMSS
 CHECKED BY: DM/EM

ROOF PLAN

A1.05



KEY PLAN



KEY PLAN

Notes:
 The number, size, and location of units, stairs, and elevators are preliminary and shown for illustrative purposes only. Final layouts may vary.
 The Applicant intends to provide solar panels, as generally depicted; however, the inclusion of solar panels is subject to availability and proper funding mechanisms.

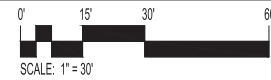
WESLEY HOUSING DEVELOPMENT CORPORATION



EAST ELEVATION



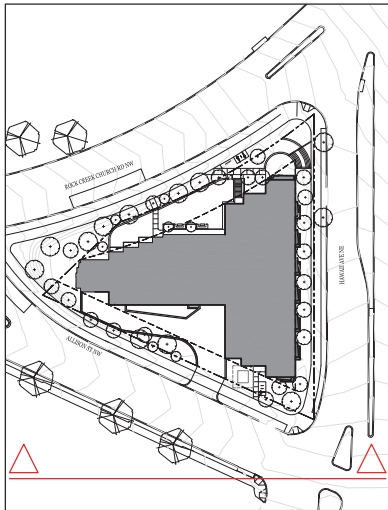
NORTH ELEVATION



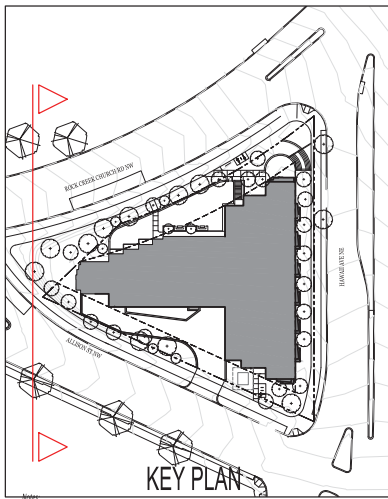
REVISIONS

1 PRE-HEARING SUBMISSION	8/27/19

DATE:	8/27/19
PROJECT NO.:	2019-044
DRAWN BY:	BMM/MS
CHECKED BY:	DHEM

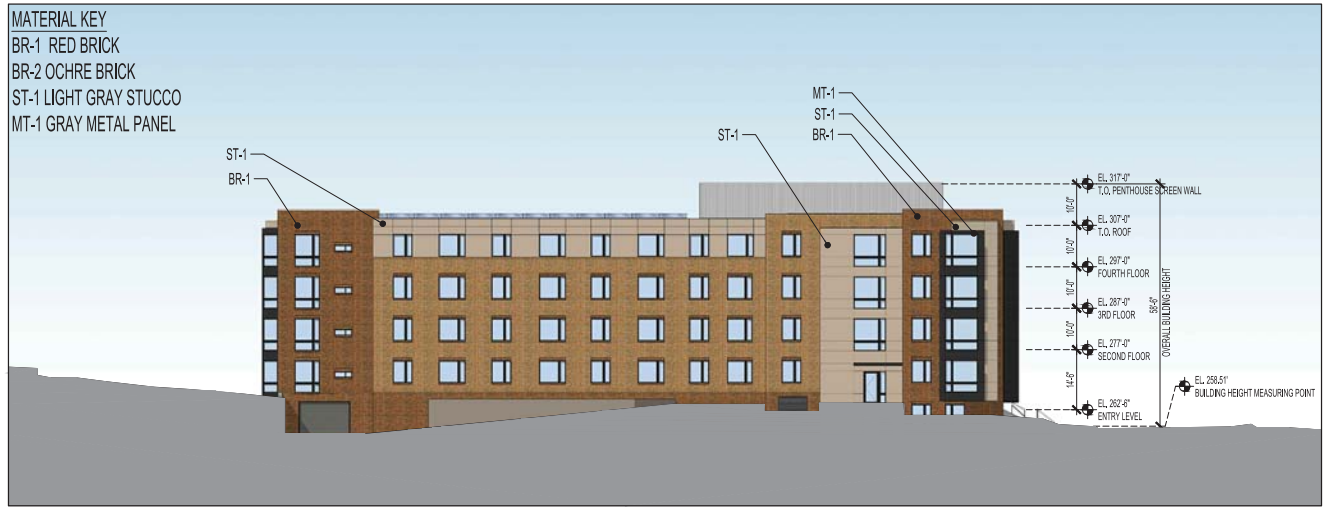


KEY PLAN



KEY PLAN

Notes:
 The number, size, and location of units, stairs, and elevators are preliminary and shown for illustrative purposes only. Final layouts may vary.
 The Applicant intends to provide solar panels, as generally depicted; however, the inclusion of solar panels is subject to availability and proper funding mechanisms.



SOUTH ELEVATION



WEST ELEVATION

WESLEY HOUSING DEVELOPMENT CORPORATION
 955 GEBORGE AVE. #50
 ALEXANDRIA, VA 22304

RATHGERBERGROSS ASSOCIATES, P.C.
 15071 CRABBS BRANCH WAY
 ROCKVILLE, MD 20855
 301-595-0073

CAPITOL ENGINEERING GROUP
 1825 K STREET NW
 SUITE 315
 WASHINGTON, DC 20006
 202-216-0038

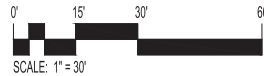
1 HAWAII AVENUE
 WASHINGTON, DC 20001

REVISIONS	
1 PRE-PREPARING SUBMISSION	8/27/19

WESLEY HOUSING DEVELOPMENT CORPORATION

Bonstra | Haresign ARCHITECTS

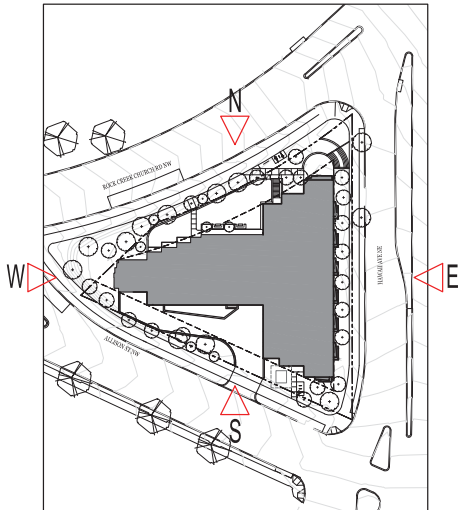
SECTIONS



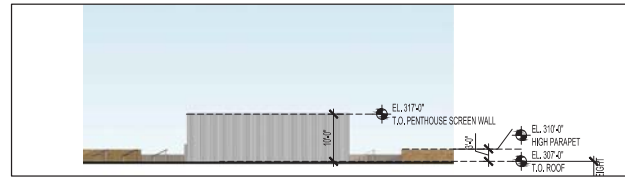
1728 Fourteenth Street, NW, Suite 300
 Washington, DC 20005-4309

www.bonstra.com | 202.588.8373 T

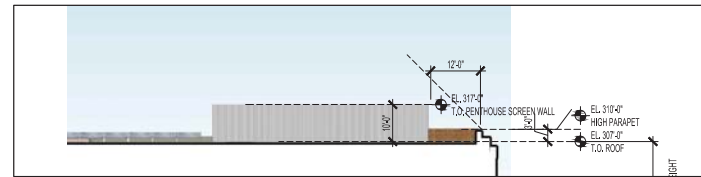
A2.02



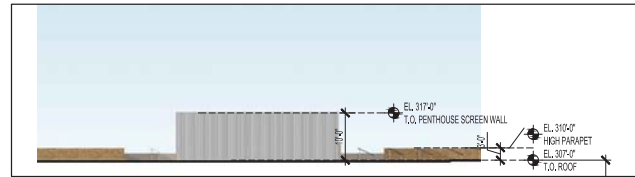
KEY PLAN



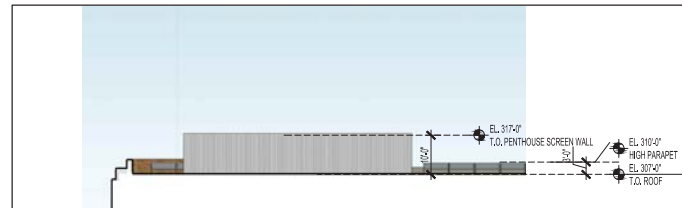
EAST MECHANICAL PENTHOUSE ELEVATION



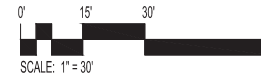
SOUTH MECHANICAL PENTHOUSE ELEVATION



WEST MECHANICAL PENTHOUSE ELEVATION



NORTH MECHANICAL PENTHOUSE ELEVATION



Notes:
 The number, size, and location of units, stairs, and elevators are preliminary and shown for illustrative purposes only. Final layouts may vary.

The Applicant intends to provide solar panels, as generally depicted, however, the inclusion of solar panels is subject to availability and proper funding mechanisms.

WESLEY HOUSING DEVELOPMENT CORPORATION

© 2019 - Bonstra | Harsign ARCHITECTS

WESLEY HOUSING DEVELOPMENT CORPORATION
 5515 CRENSHAW AVE. #100
 ALEXANDRIA, VA 22312

RATHGERBERGROSS ASSOCIATES, P.C.
 18071 CRABBS BRANCH WAY
 ROCKVILLE, MD 20855
 301-696-0073

CAPITOL ENGINEERING GROUP
 1825 K STREET NW
 SUITE 213
 WASHINGTON, DC 20006
 202-416-0039

1 HAWAII AVENUE
 THIRDMILLE AVE
 WASHINGTON, DC 20011

REVISIONS	
1 PRE-CHECKING SUBMISSION	8/27/19

DATE:	8/27/19
PROJECT NO.:	2019-244
DRAWN BY:	DHM/JMS
CHECKED BY:	DBM

Bonstra | Harsign ARCHITECTS

1728 Fourteenth Street, NW, Suite 300
 Washington, DC 20005-4309

www.bonstra.com | 202-588-9373

ELEVATIONS

A2.03

BRICK



BR-1 TAYLOR | 117 RED SMOOTH IRON SPOT



BR-2 PALMETTO | BUFFSTONE WIRECUT

STUCCO



ST-1 STD | SW 6003 PROPER GRAY

METAL PANEL



MT-1 VITRABOND | LAKE FROME

Notes:
The number, size, and location of units, stairs, and elevators are preliminary
and shown for illustrative purposes only. Final layouts may vary.

WESLEY HOUSING DEVELOPMENT CORPORATION

FACADE MATERIAL

Bonstra Haresign
ARCHITECTS

1728 Fourteenth Street, NW, Suite 300
Washington, DC 20009-4309

www.bonstra.com | 202 | 588 9373 | T

WESLEY HOUSING DEVELOPMENT CORPORATION
3935 CRENSHAW AVE #40
ALEXANDRIA, VA 22302

STRUCTURAL ENGINEER RATHERBERGER/GOSS ASSOCIATES, P.C.
15971 CRABBS BRANCH WAY
ROCKVILLE, MD 20855
301-596-0073

MEP ENGINEER CAPITOL ENGINEERING GROUP
1823 K STREET NW
SUITE 215
WASHINGTON, DC 20006
202-219-0039

1 HAWAII AVE NE
1150 HAWAII AVE NE
WASHINGTON DC 20001

REVISIONS

1 PRE-FINAL SUBMISSION	8/21/19

DATE: 8/21/19
PROJECT NO: 2019-024
DRAWN BY: SHY MASS
CHECKED BY: DHEMM

FACADE MATERIAL

A4.01

BEFORE
JANUARY, 2019



CURRENT



BEFORE
JANUARY, 2019



CURRENT

