



COURTYARD PLANT MATERIAL



COURTYARD PLANT MATERIAL



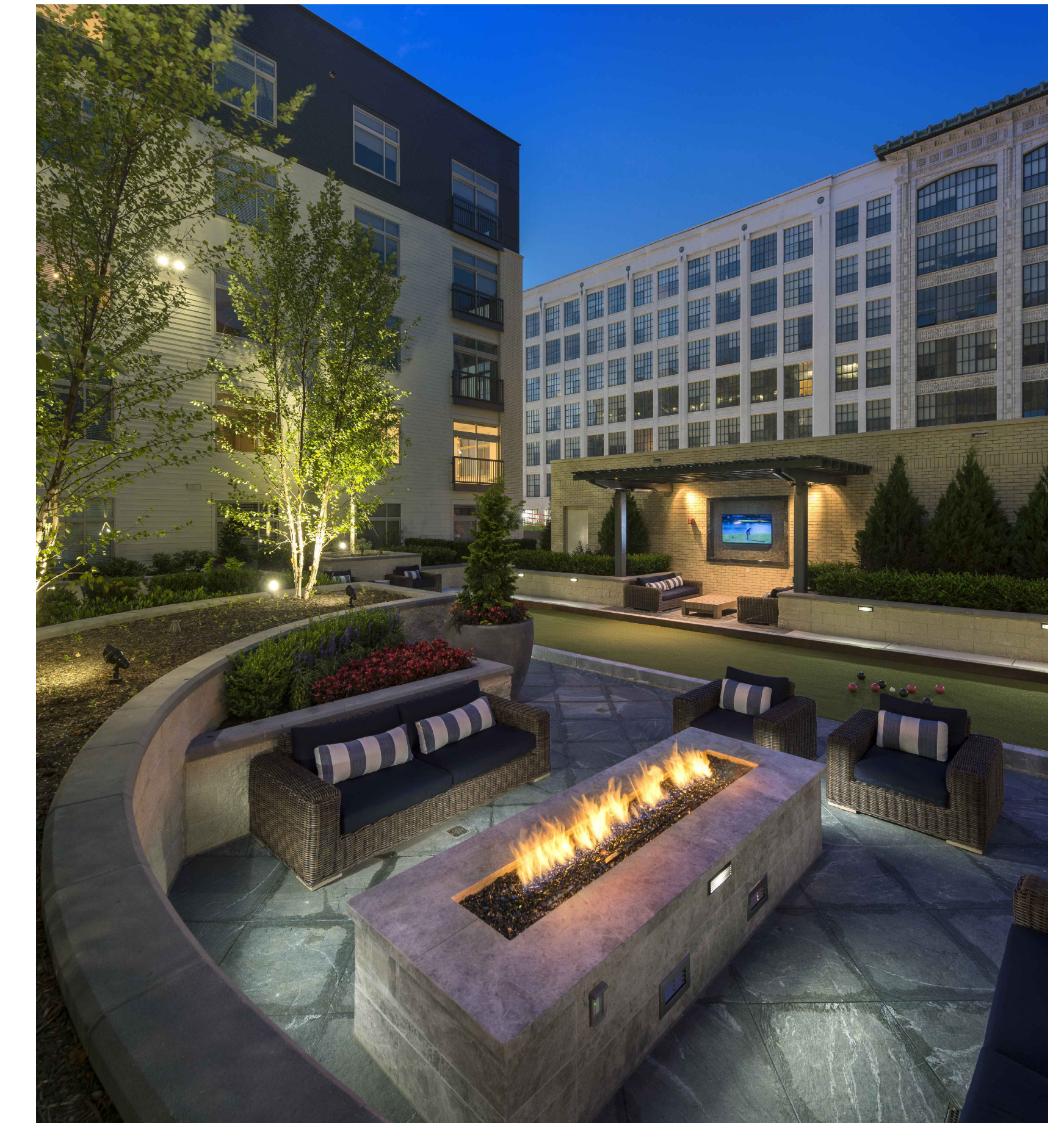
FEATURE WALL WITH ARBOR STRUCTURE



STAINLESS STEEL GRILL



COURTYARD FURNITURE WITH UMBRELLAS



OUTDOOR LINEAR FIRE PIT



Architecture + Planning  
888.456.5849  
ktgy.com



**HANOVER 8TH STREET**  
WASHINGTON, DC # 2018-0430

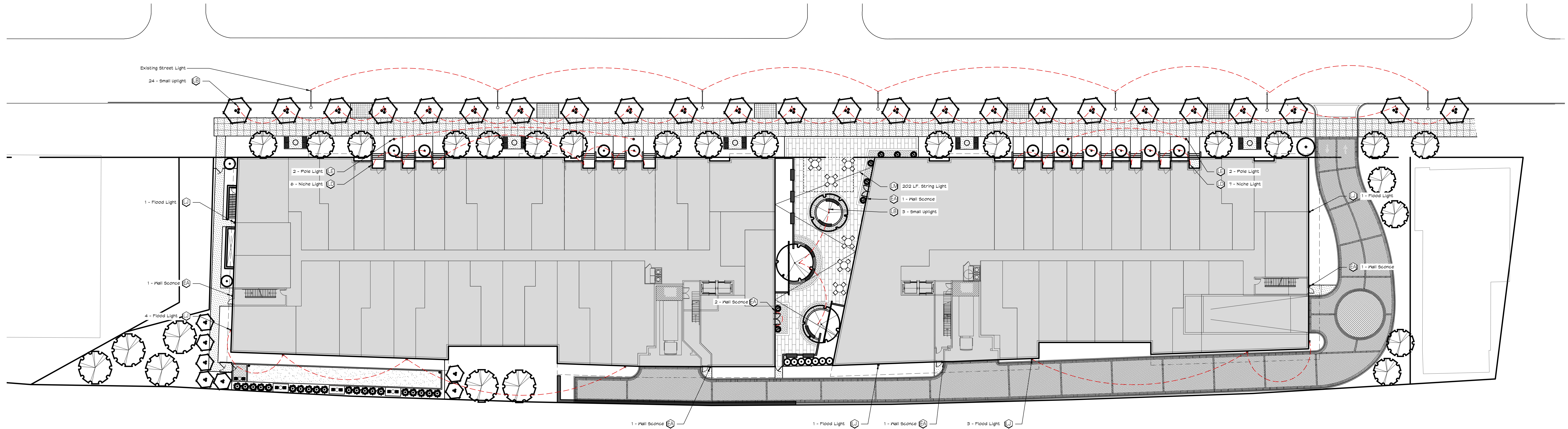
**PUD CONSOLIDATED SUBMISSION**  
February 25, 2019



PRECEDENT IMAGES

L16





**LIGHTING LEGEND**

LABEL	SYMBOL	PROJECT TOTAL	DESCRIPTION & SPECIFICATION
⊞	⊞	21	Small Uplight (Remote Transformer) Kim EL 700F3-7L4KUV/DB With AGS71 / JBR4 7W LED
⊞	⊞	10	Building Mounted Flood Light Re: Arch for Exact Locations
⊞	⊞	13	Step/Niche Lights Nora NSW800 / NSW851/32-BZ LED
⊞	⊞	4	Pole Light Global Lighting Perspectives (GLP) - GC7030-120LED with GP210-10 - BK Textured Black Finish
⊞	⊞	7	Building Mounted Sconce Re: Arch for Exact Locations
⊞	⊞	202 LF	String Lights (Field Measure for Exact Run Lengths), American Lighting Festoon - LFS-12V-1.5W-LED-WW

NOTES:  
 1. See enlarged lighting plans for detailed lighting layouts / notes.  
 2. Above fixture PROJECT totals are for ENTIRE site.  
 3. See building electrical plans for exterior architectural lighting.



Architecture + Planning  
888.456.5849  
ktgy.com



**HANOVER 8TH STREET**  
WASHINGTON, DC # 2018-0430

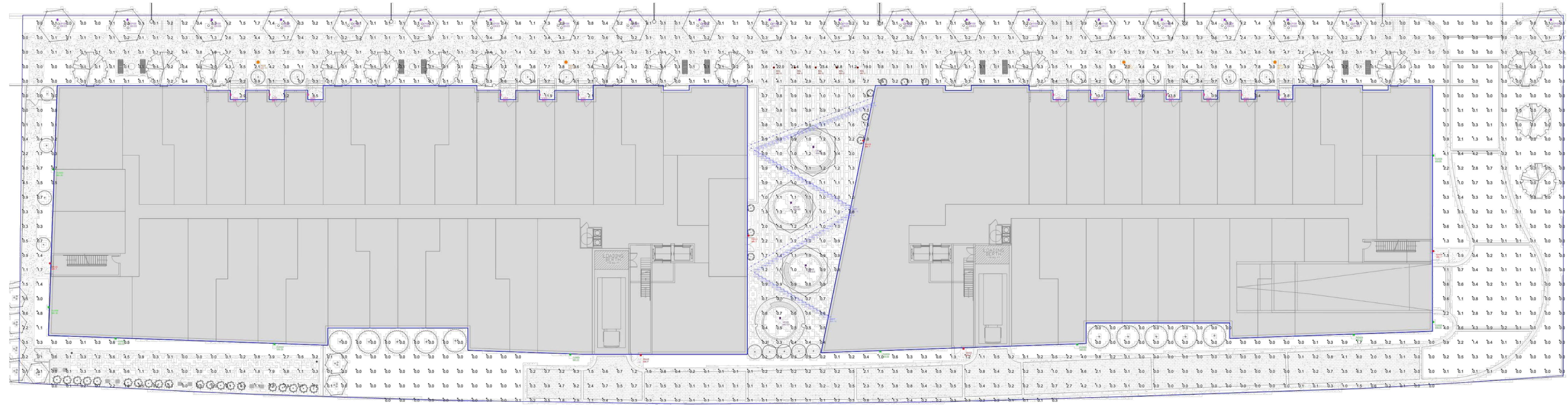
**PUD CONSOLIDATED SUBMISSION**  
February 25, 2019



LIGHTING PLAN

L17





Symbol	Qty	Label	Arrangement	Lum. Lumens	LLF	Description
○	5	BOL	SINGLE	1224	1.000	XBVR-ID-LED-24-400-NW-UE
○	6	EA-LG	SINGLE	1624	1.000	7176-34-H16LED-40K
□	10	FLOOD	SINGLE	1432	1.000	EL700NF-12L4K
●	110	LAMP	SINGLE	47	1.000	LFS-12V-1.5-LED-WW
○	4	POST	SINGLE	4818	1.000	GC7030-60WLED-T3
○	13	STEP	SINGLE	188	1.000	FCSL105-120V-4K-190LM
○	4	UP-LG	SINGLE	939	1.000	EL700F3-9L4K
○	21	UP-SM	SINGLE	807	1.000	EL700F3-7L4K

Label	CalcType	Units	Avg	Max	Min	Avg/Min	Max/Min
GROUND Planar	Illuminance	Fc	1.00	43.8	0.0	N.A.	N.A.



# Civil Exhibits

THIS PAGE INTENTIONALLY LEFT BLANK

## STANDARD DRAWING LEGEND

FOR ENTIRE PLAN SET  
(NOT TO SCALE)

EXISTING NOTE	TYPICAL NOTE TEXT	PROPOSED NOTE	EXISTING NOTE	TYPICAL NOTE TEXT	PROPOSED NOTE
	ONSITE PROPERTY LINE / R.O.W. LINE			OVERHEAD WIRE	
	NEIGHBORING PROPERTY LINE / INTERIOR PARCEL LINE			UNDERGROUND TELEPHONE LINE	
	EASEMENT LINE			UNDERGROUND CABLE LINE	
	SETBACK LINE			STORM SEWER	
				SANITARY SEWER MAIN	
	CONCRETE CURB & GUTTER			HYDRANT	
				SANITARY MANHOLE	
				STORM MANHOLE	
	UTILITY POLE WITH LIGHT			WATER METER	
	POLE LIGHT			WATER VALVE	
	TRAFFIC LIGHT			GAS VALVE	
	UTILITY POLE			GAS METER	
	TYPICAL LIGHT			TYPICAL END SECTION	
	ACORN LIGHT			HEADWALL OR ENDWALL	
	TYPICAL SIGN			YARD INLET	
	PARKING COUNTS			CURB INLET	
				CLEAN OUT	
	CONTOUR LINE			ELECTRIC MANHOLE	
	SPOT ELEVATIONS			TELEPHONE MANHOLE	
				ELECTRIC BOX	
	SANITARY LABEL			ELECTRIC PEDESTAL	
	STORM LABEL			MONITORING WELL	
	SANITARY SEWER LATERAL			TEST PIT	
	UNDERGROUND WATER LINE			BENCHMARK	
	UNDERGROUND ELECTRIC LINE			BORING	
	UNDERGROUND GAS LINE				

## GENERAL NOTES:

1. THE PLAN IS BASED ON THE FOLLOWING DOCUMENTS AND INFORMATION
  - A. ENTITLED: "ALTA/ACSM LAND TITLE SURVEY, THE HANOVER COMPANY, LOT 15, SQUARE 3382 AND A&T LOT 804, SQUARE 3835, 3201 & 3135 8TH STREET NE, DISTRICT OF COLUMBIA", PREPARED BY: BOHLER ENGINEERING, PROJECT NUMBER: SRW182079, DATED: 08/19/18
  - B. DIGITAL ARCHITECTURAL PLANS: ENTITLED: "180430 SPV28.2.DWG," PREPARED BY: KTG ARCHITECTS, DATE RECEIVED: 01/02/19
  - C. DIGITAL LANDSCAPE PLANS: ENTITLED: "WSP-BROOKLAND-GROUND.DWG," PREPARED BY: GWH LANDSCAPE ARCHITECTS, DATE RECEIVED: 01/24/19
2. LOCATION OF ALL UNDERGROUND UTILITIES ARE APPROXIMATE. ALL LOCATIONS AND SIZES ARE BASED ON UTILITY MARK OUTS, ABOVE GROUND STRUCTURES THAT WERE VISIBLE & ACCESSIBLE IN THE FIELD, AND THE MAPS AS LISTED IN THE REFERENCES AVAILABLE AT THE TIME OF THE SURVEY. AVAILABLE AS-BUILT PLANS AND UTILITY MARK OUT DOES NOT ENSURE MAPPING OF ALL UNDERGROUND UTILITIES AND STRUCTURES. BEFORE ANY EXCAVATION IS TO BEGIN, ALL UNDERGROUND UTILITIES SHOULD BE VERIFIED AS TO THEIR LOCATION, SIZE, AND TYPE BY THE PROPER UTILITY COMPANIES.

## SHEET INDEX

SHEET TITLE	SHEET NUMBER
GENERAL NOTES AND LEGEND	C-101
EXISTING CONDITIONS PLAN	C-201
SITE PLAN	C-301
GRADING PLAN	C-401
UTILITY PLAN	C-501
EROSION AND SEDIMENT CONTROL PLAN	C-601
EROSION AND SEDIMENT CONTROL PLAN NOTES AND DETAILS	C-602
PUBLIC SPACE PLAN	C-701-702
VEHICULAR TURNING MOVEMENTS (BY OTHERS)	C-801
STORMWATER MANAGEMENT PLAN	C-901-902
STORMWATER MANAGEMENT CALCULATIONS AND DETAILS	C-904

### DEVELOPER

THE HANOVER COMPANY  
CORPORATE OFFICE  
5847 SAN FELIPE, SUITE 3600  
HOUSTON, TX 77057

## GENERAL NOTES AND LEGEND



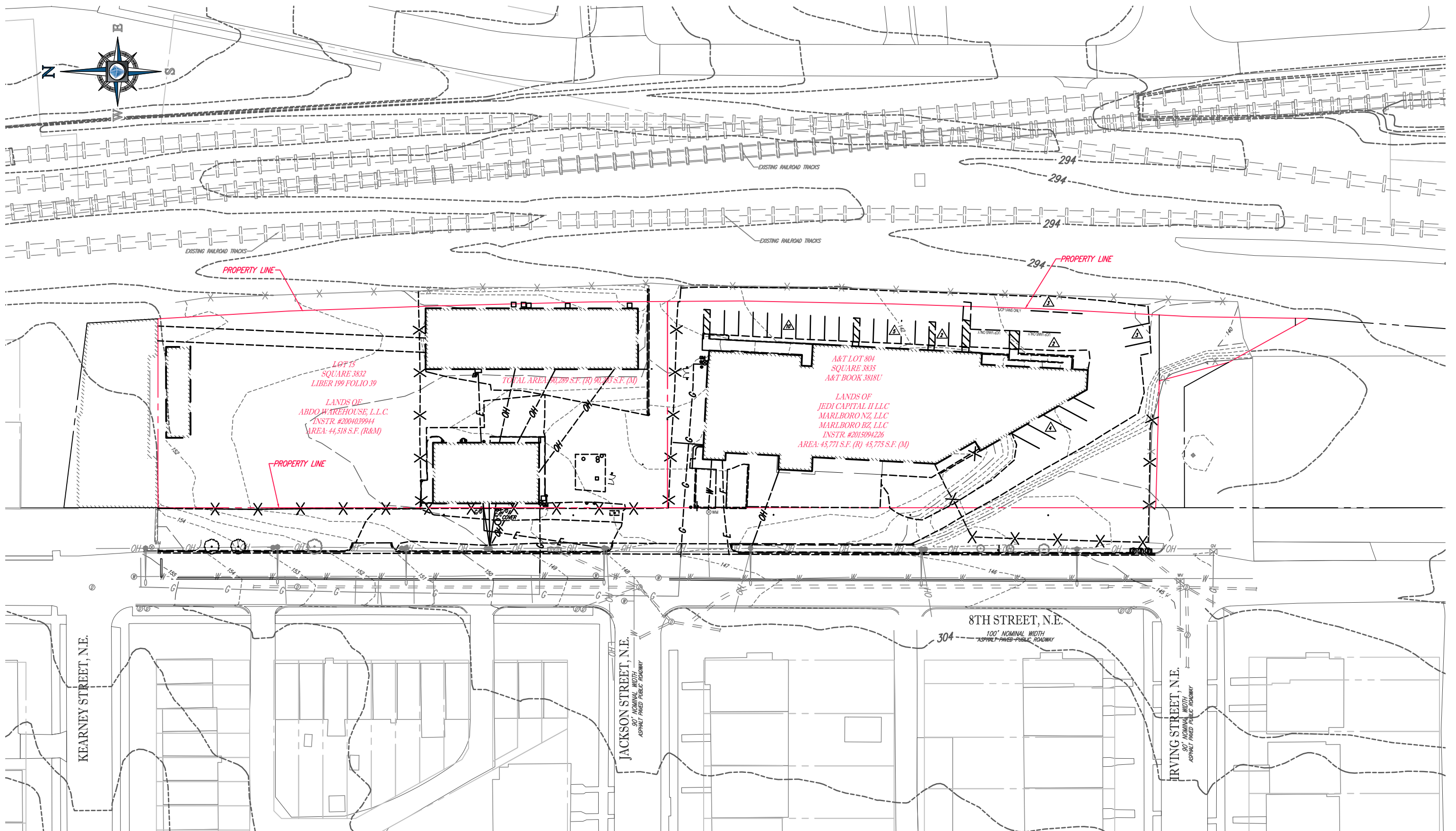
**BOHLER**  
DC

HANOVER - PUD APPLICATION

February 25, 2019



**C-101**



## EXISTING CONDITIONS PLAN

SCALE: 1" = 60'

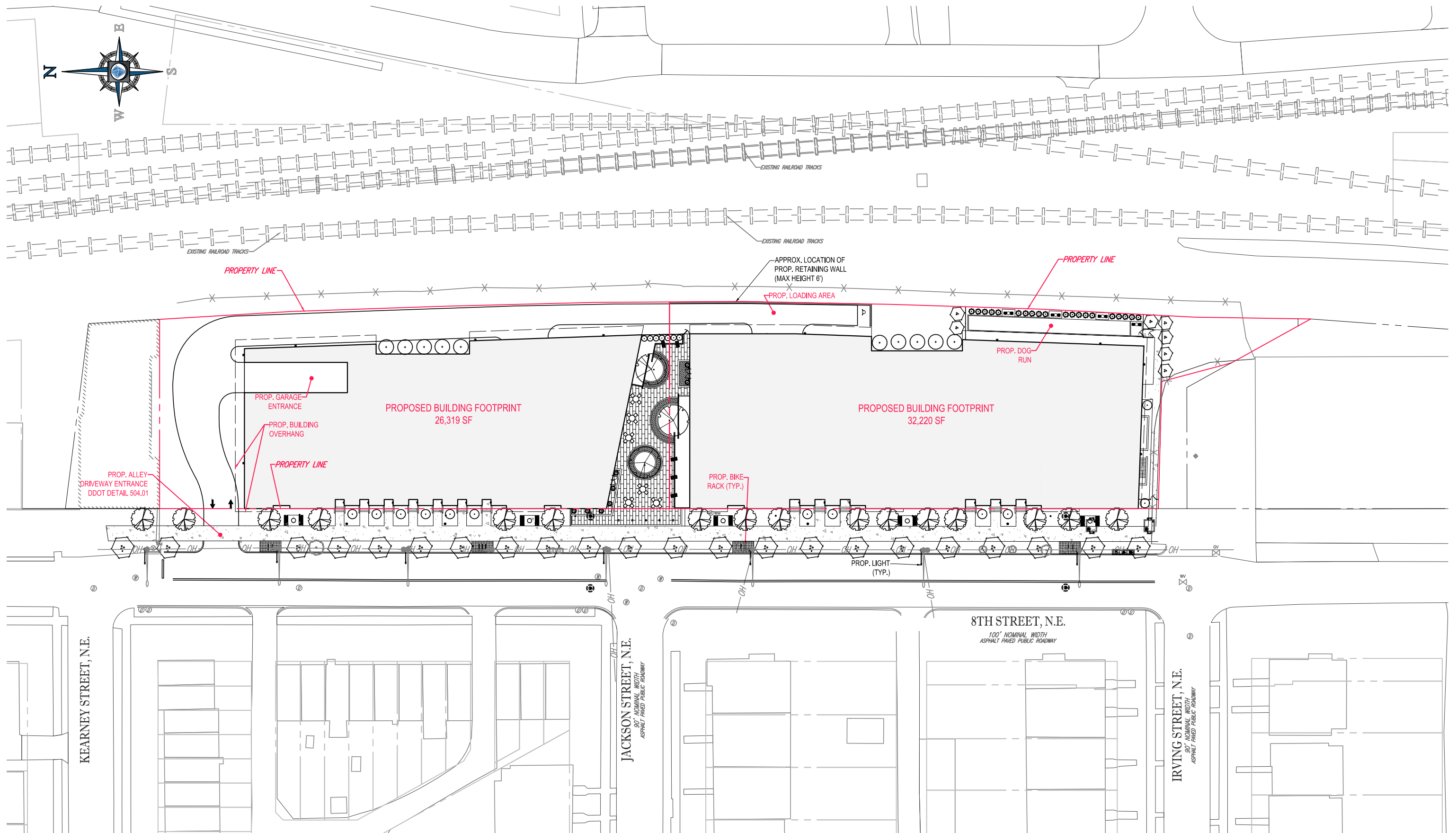


**BOHLER**  
DC

HANOVER - PUD APPLICATION  
February 25, 2019



C-201



**SITE PLAN**

SCALE: 1" = 60'



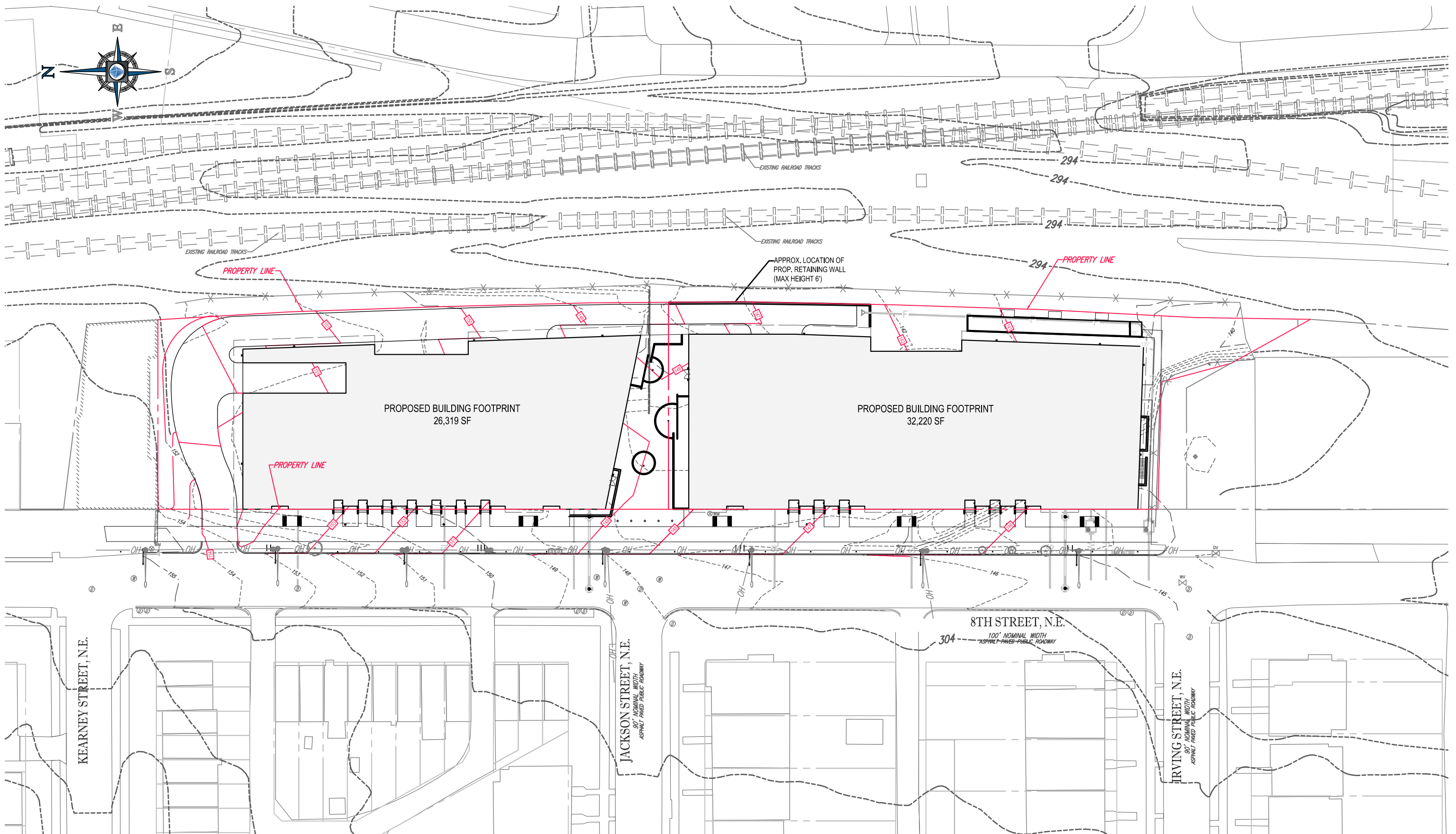
**BOHLER**  
DC

HANOVER - PUD APPLICATION  
February 25, 2019



**C-301**





**GRADING PLAN**

SCALE: 1" = 60'



**BOHLER**  
DC

HANOVER - PUD APPLICATION  
February 25, 2019



**C-401**