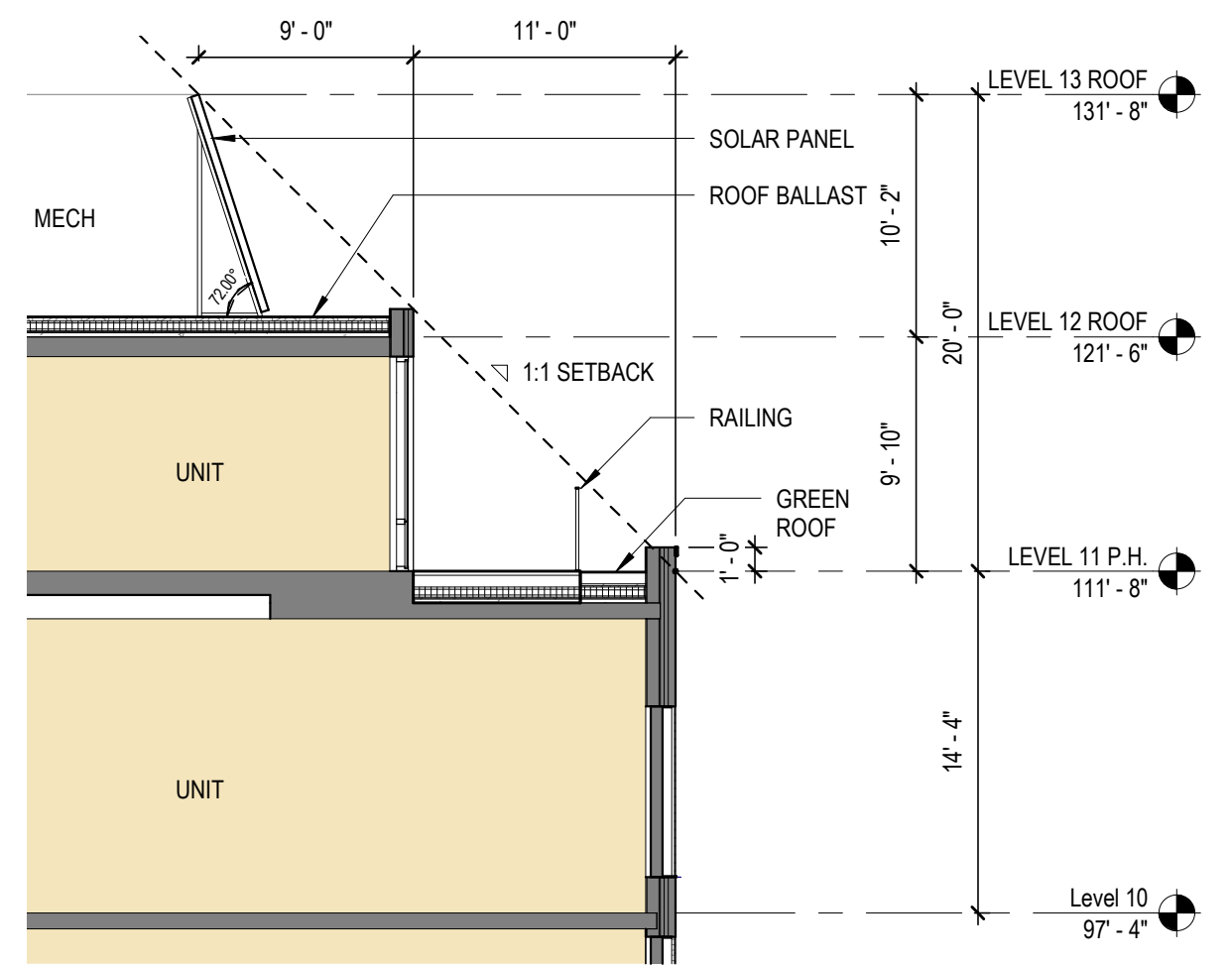
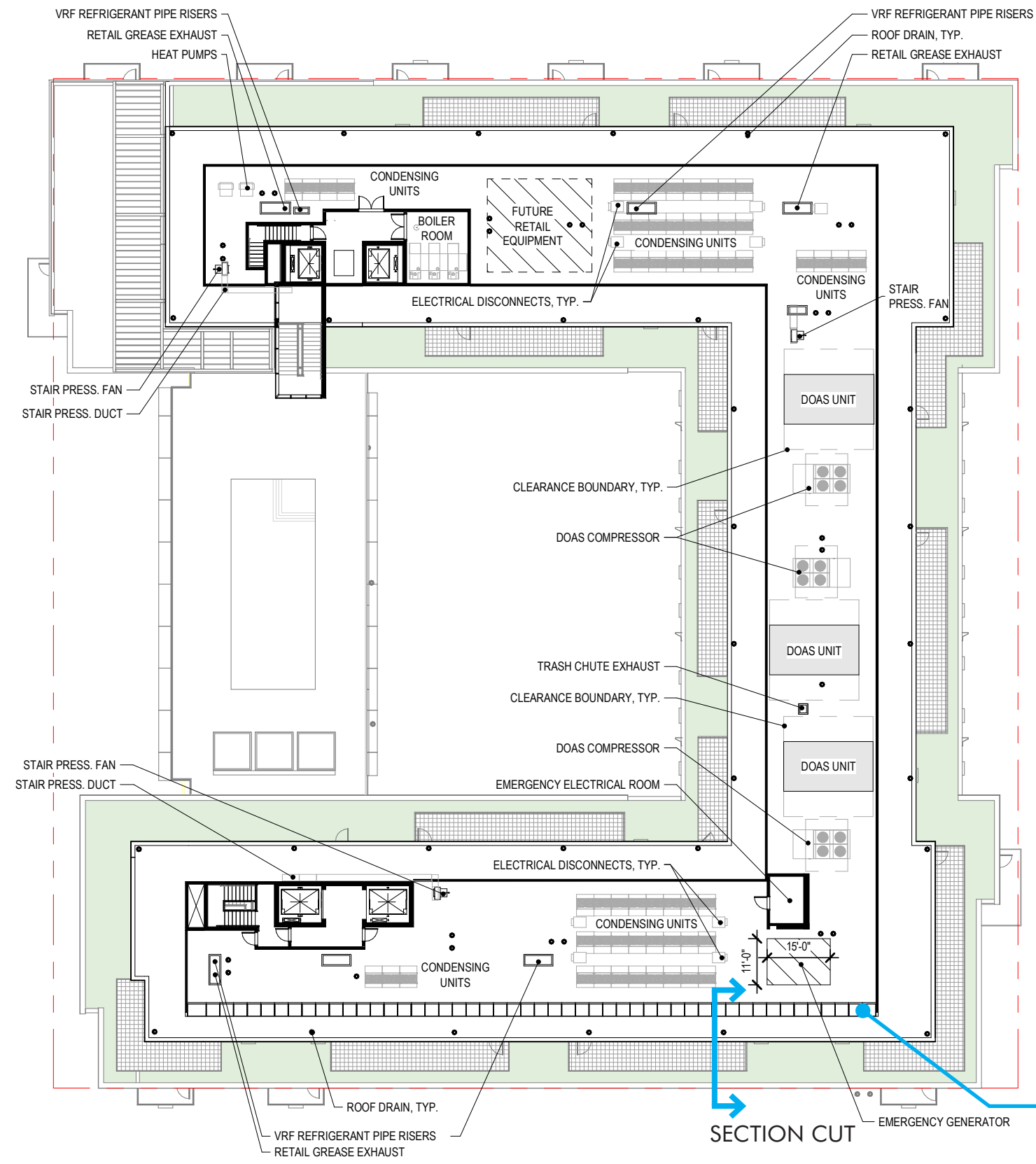
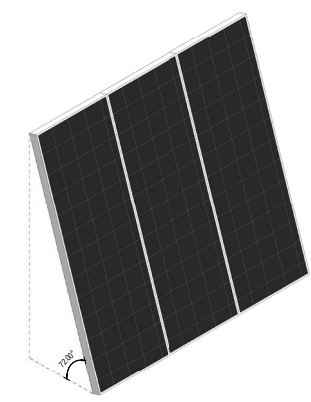


Landscape (Below)



ENLARGED ROOF SECTION



SOLAR PANELS  
ANGLED UP TO 20% FROM VERTICAL  
AS MECHANICAL SCREEN



**Floor Plan - Mechanical P.H.**  
Parcel I at The Yards West - Design Review Application

April 29th, 2019

**Brookfield**  
Properties

**Perkins Eastman DC**

**MPFP** ZONING COMMISSION  
City of Columbia  
CASE NO.18-20  
EXHIBIT NO.27B