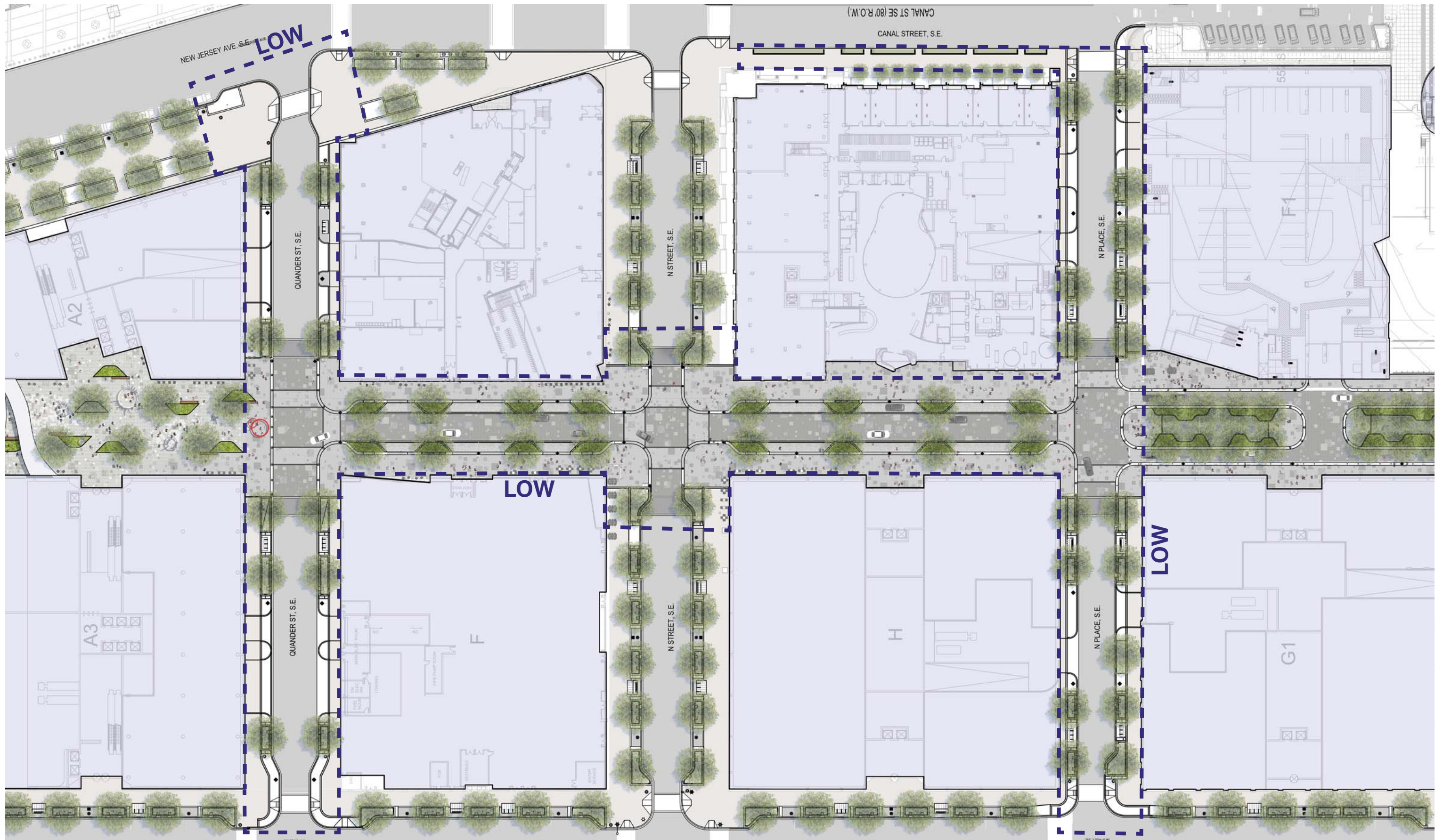


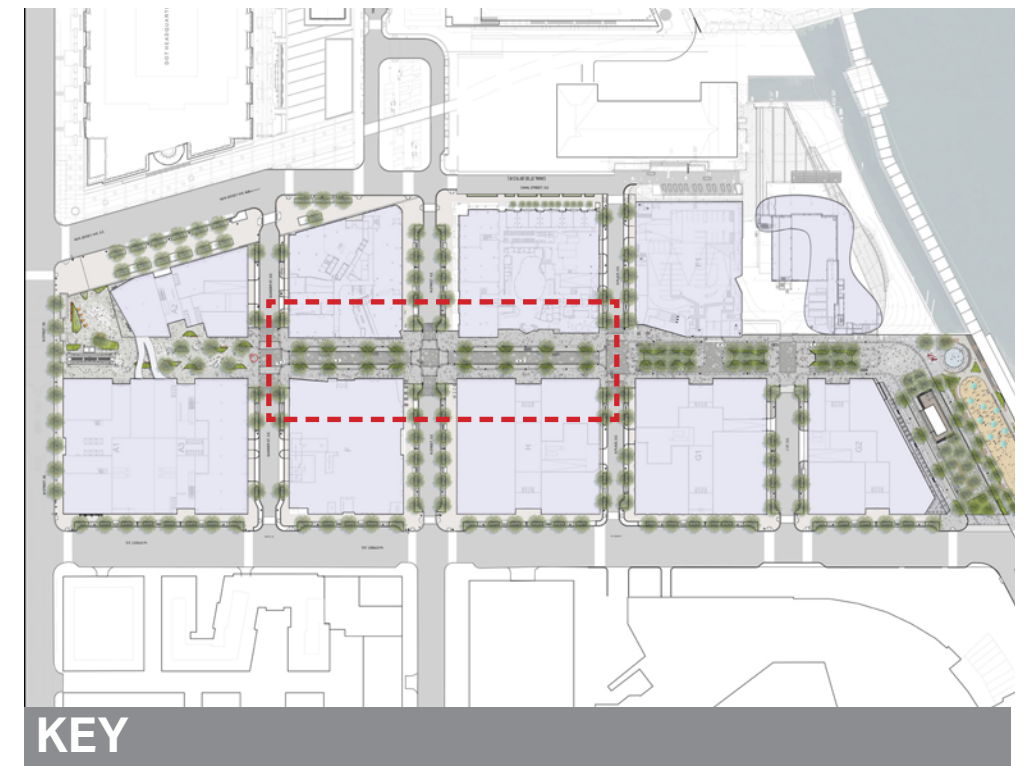
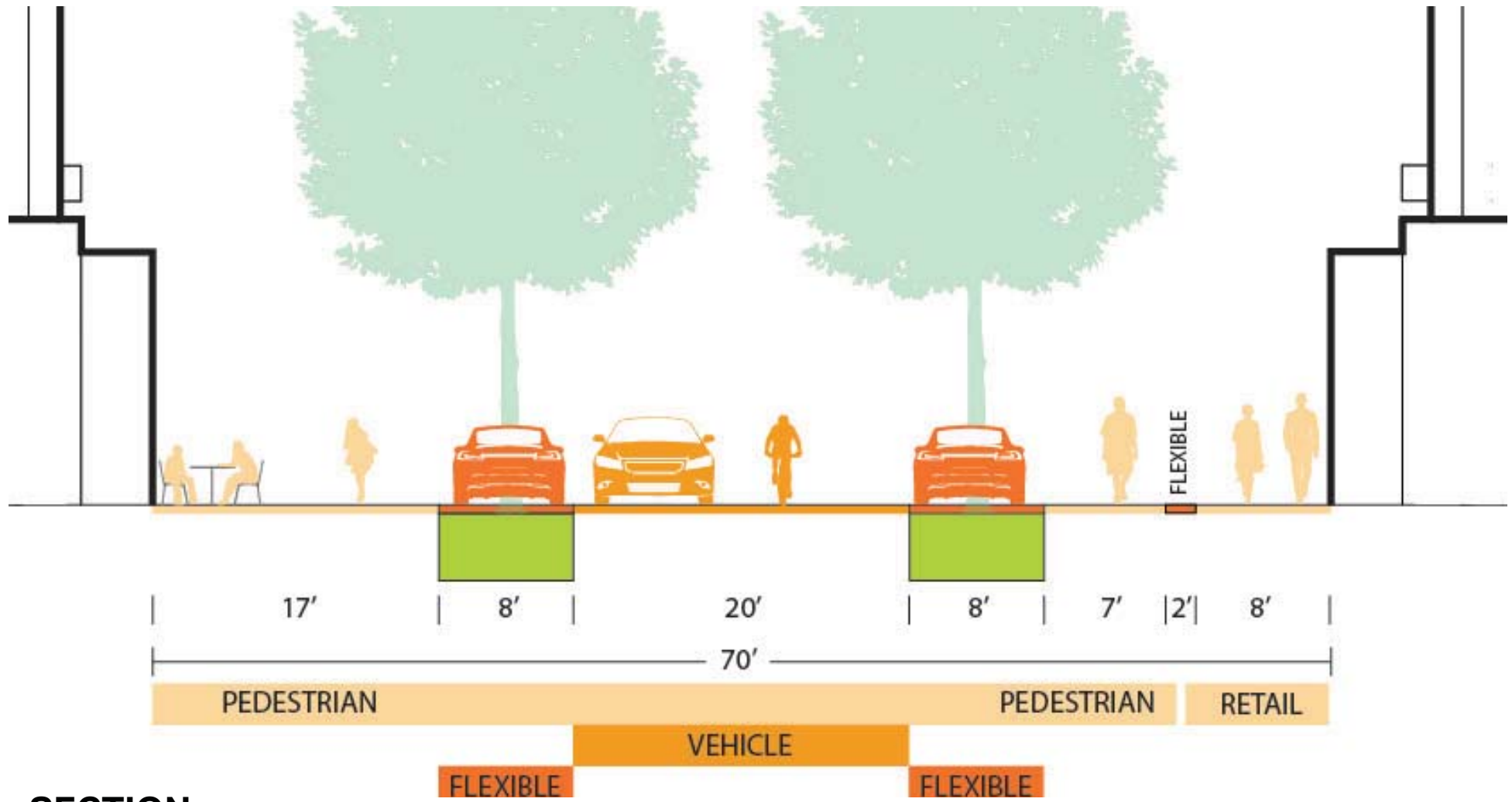
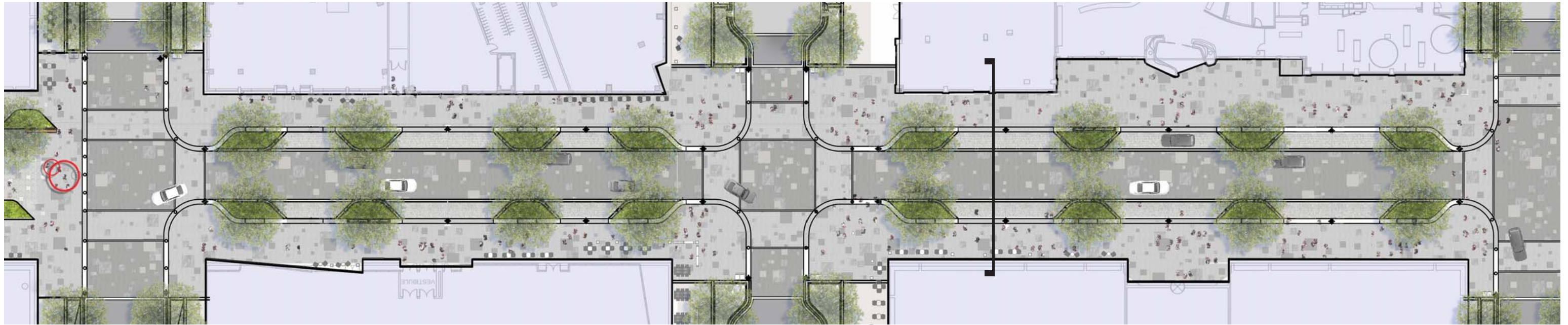


THE YARDS

Public Space Permitting



Phase 1 Approval Area
Overall Planning



SECTION

1-1/2 Street from Quander to N Place
Overall Planning



1 - 1/2 Street - View North
Perspectives



1 - 1/2 Street - View North
 Perspectives

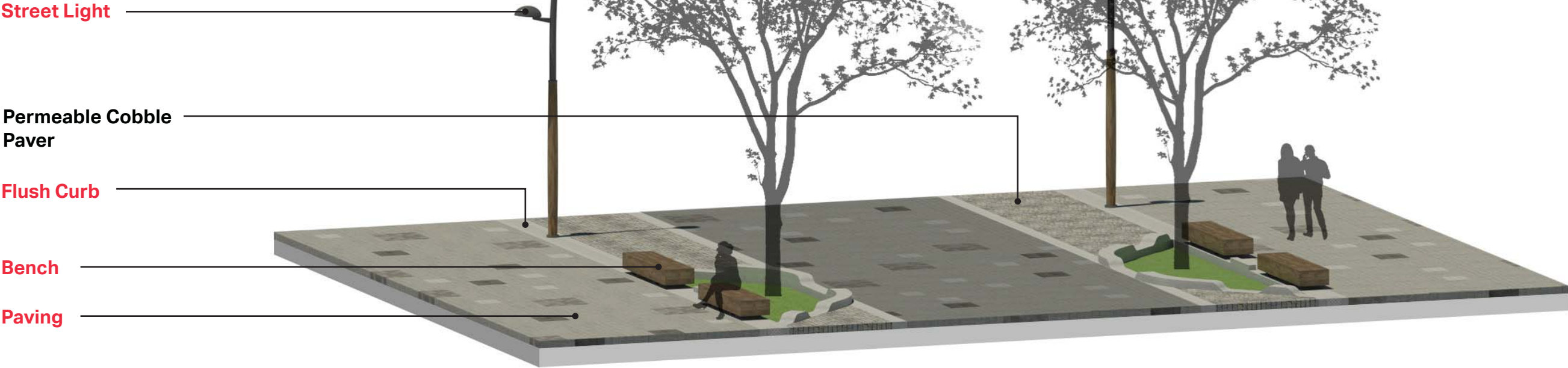


1-1/2 Street View South at Intersection of Quander St
Perspectives



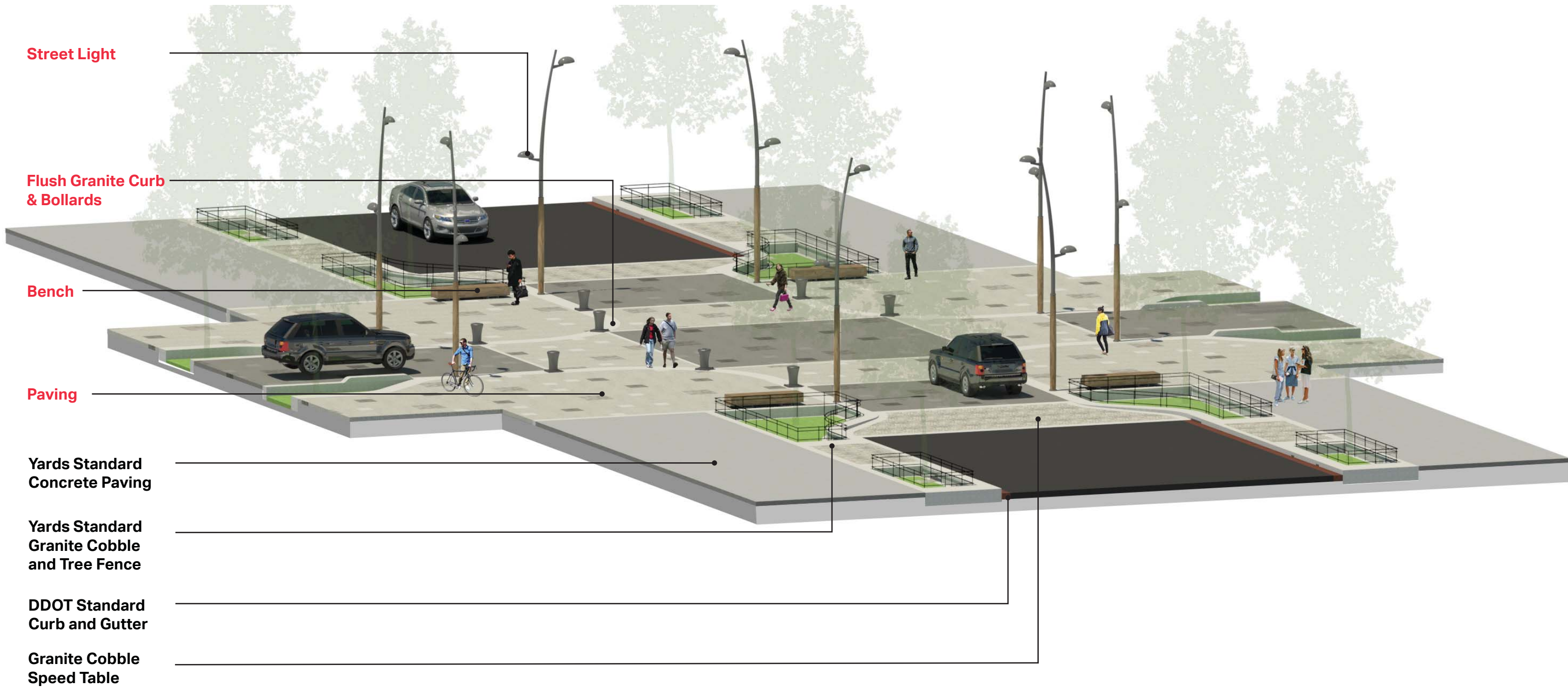
1-1/2 Street View Northwest at Intersection of N Street
Perspectives

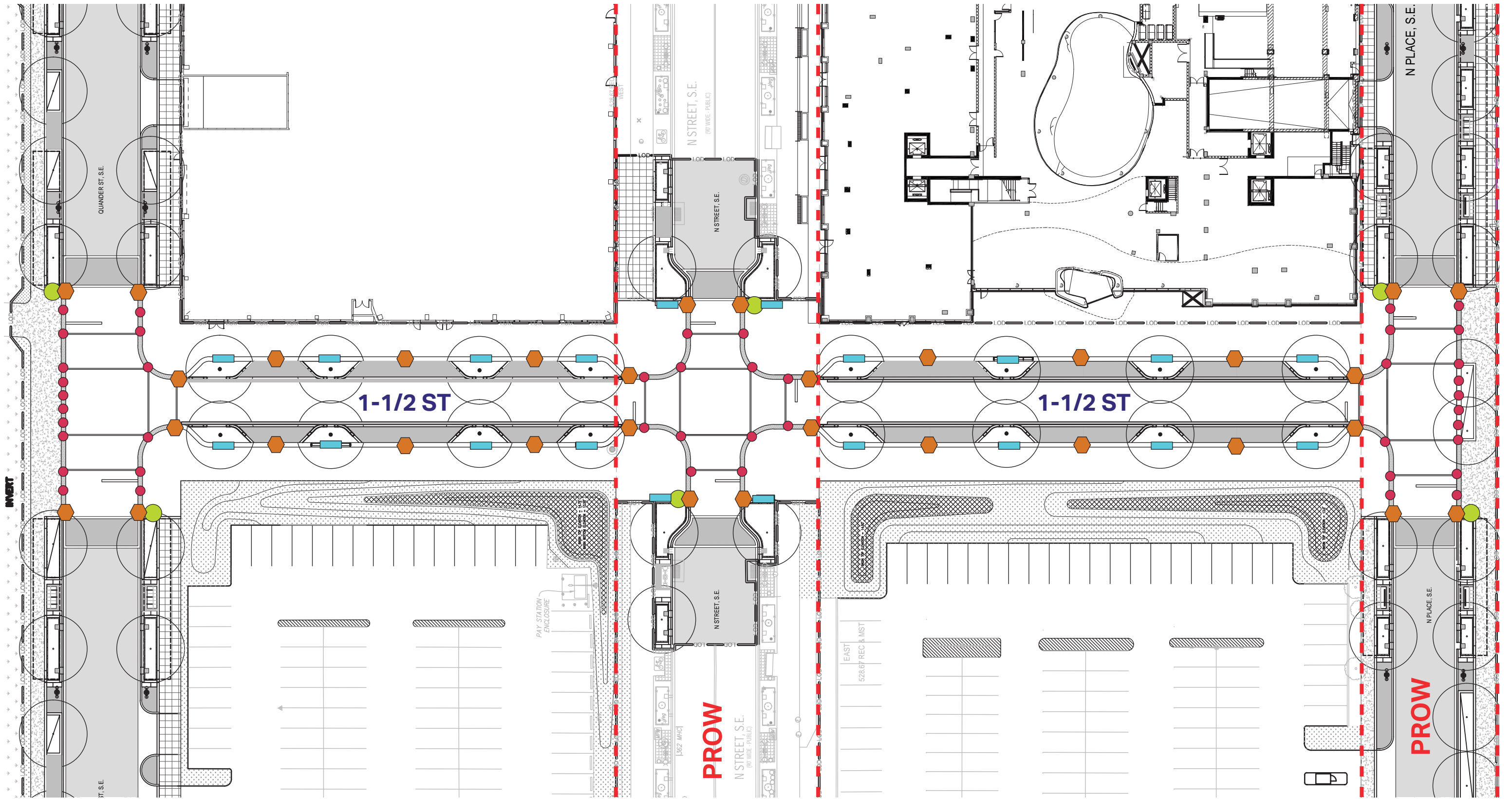
1 1/2 Street



Cross Streets







- Bench
- Street Light
- Bollard
- Litter Receptacle

Proposed for 1-1/2 Street



Accoya Acetylated High Performance Wood Bench

Existing Precedents



Wood Bench at Diamond Teague Park



Yards Wood Bench on New Jersey Ave



Riverwalk Guidelines

Proposed for 1-1/2 Street



Hess Canto Double Fixture with Stuctura Bol Pole

Existing Precedents



Hess Canto Fixture at Yards Park



Proposed for 1-1/2 Street



Canterbury Nautical Bollards



Victor Stanley Trash and Recycling Receptacle with Lid

Comparable Furnishings: Bollards and Litter Receptacles
Streetscape Materials & Furnishings

Existing Precedents



Design Cues from Surrounding Landscape

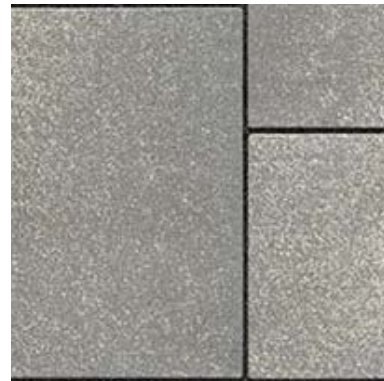


Victor Stanley Trash Receptacle on New Jersey

Proposed for 1-1/2 Street



**Unilock
Winter Marvel**



**Unilock
French Grey**



**Unilock
Midnight Sky**

Unilock Umbriano Concrete Pavers

Comparable Paving
Streetscape Materials & Furnishings

Existing Precedents



Concrete Pavers on M Street



Concrete Pavers at Yards Park



Concrete Pavers on New Jersey Ave

Riverwalk Guidelines



SECONDARY PAVING ALTERNATIVE OPTION - LINEAR PAVERS - APPROVED BY OP

Proposed for 1-1/2 Street

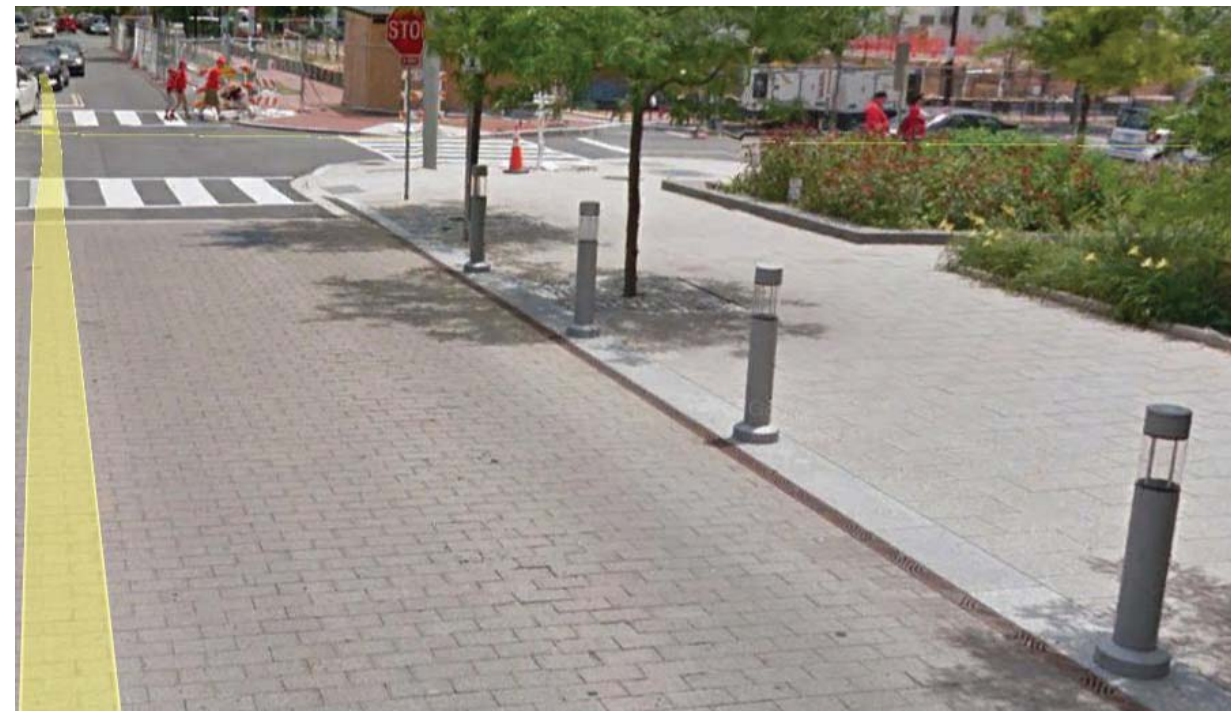


Unilock Umbriano Concrete Pavers

Existing Precedents



Granite Pavers on Water Street



Concrete Pavers on L Street

Proposed for 1-1/2 Street



Marshall's Arche Granite Curb and Cobble

Existing Precedents



**Mount Airy Granite Curb and Cobble
standard to the Yards and DC**

