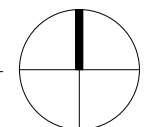


1 SITE PLAN
 A1.0 1/16" = 1'-0"



FOR LANDSCAPING, PUBLIC SPACE AND ROOF DECK DESIGN SEE SHEETS L1.0 - L1.6

Dancing Crab Properties, LLC
 1801 RIVER ROAD
 POTOMAC, MD 20854

STRUCTURAL ENGINEER
 STRUCTURA
 111 ROCKVILLE PIKE
 SUITE 950
 ROCKVILLE, MD 20850
 301-987-9234

MEP ENGINEER
 CAPITOL ENGINEERING GROUP
 1825 K STREET NW
 SUITE 375
 WASHINGTON, DC 20006
 202-216-0039

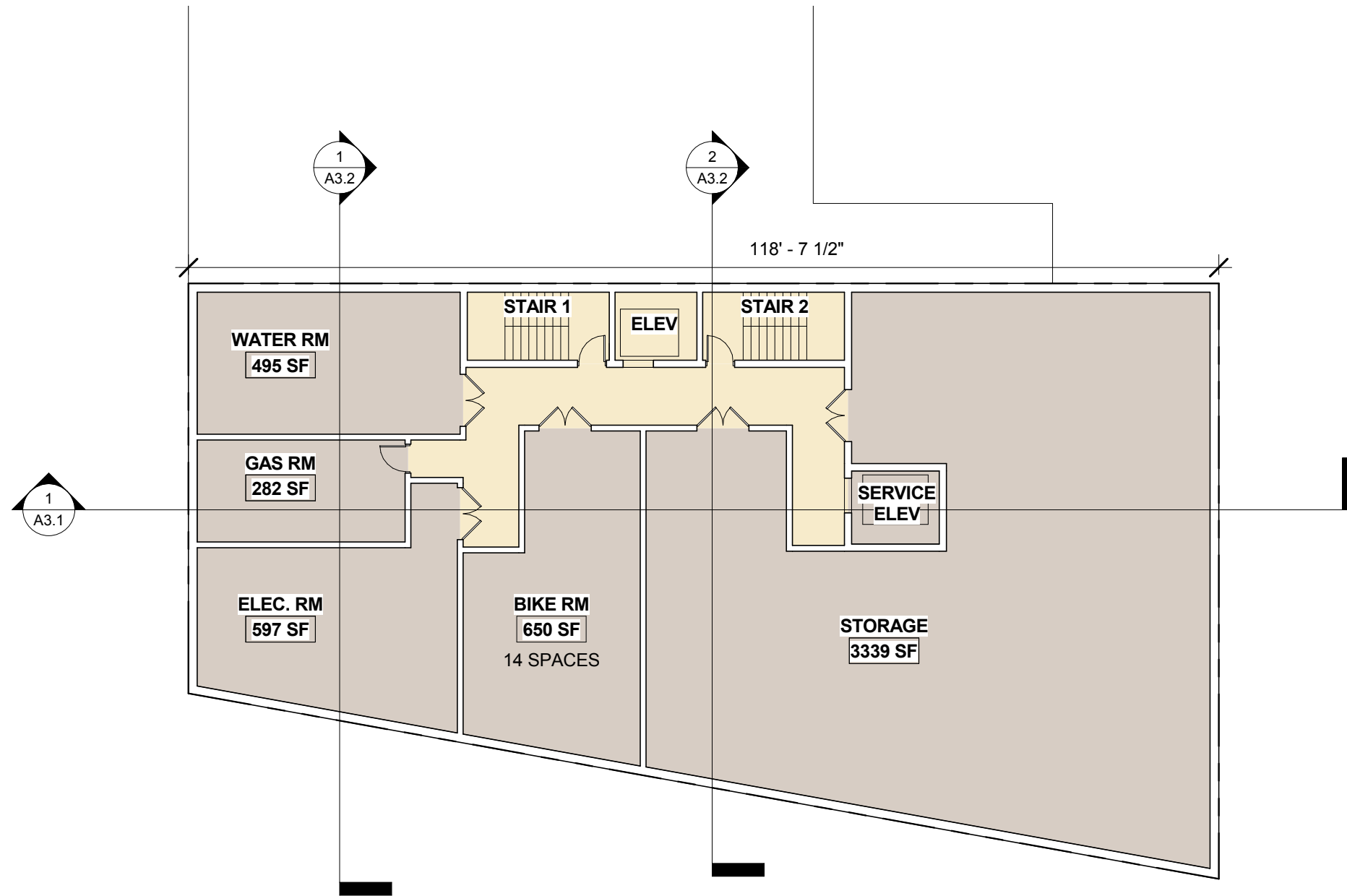
Tenleytown Apartments
 4811 46th St NW
 Washington, DC 20016

REVISIONS
 1 Post-Hearing Submission 11/16/18

DATE: 1/16/18
 PROJECT NO: 2016-042
 DRAWN BY: AG
 CHECKED BY: JMBB

Bonstra Haresign
 ARCHITECTS

ARCHITECTURAL SITE PLAN



1
A1.1 CELLAR FLOOR PLAN
1/16" = 1'-0"

- RESTAURANT
- RESIDENTIAL
- CIRCULATION
- SERVICE / UTILITY
- VEGETATION

NOTE: ALL SF SHOWN ON PLANS ARE NET SF.

Bonstra Haresign
ARCHITECTS

Dancing Crab Properties, LLC
1901 RIVER ROAD
POTOMAC, MD 20854

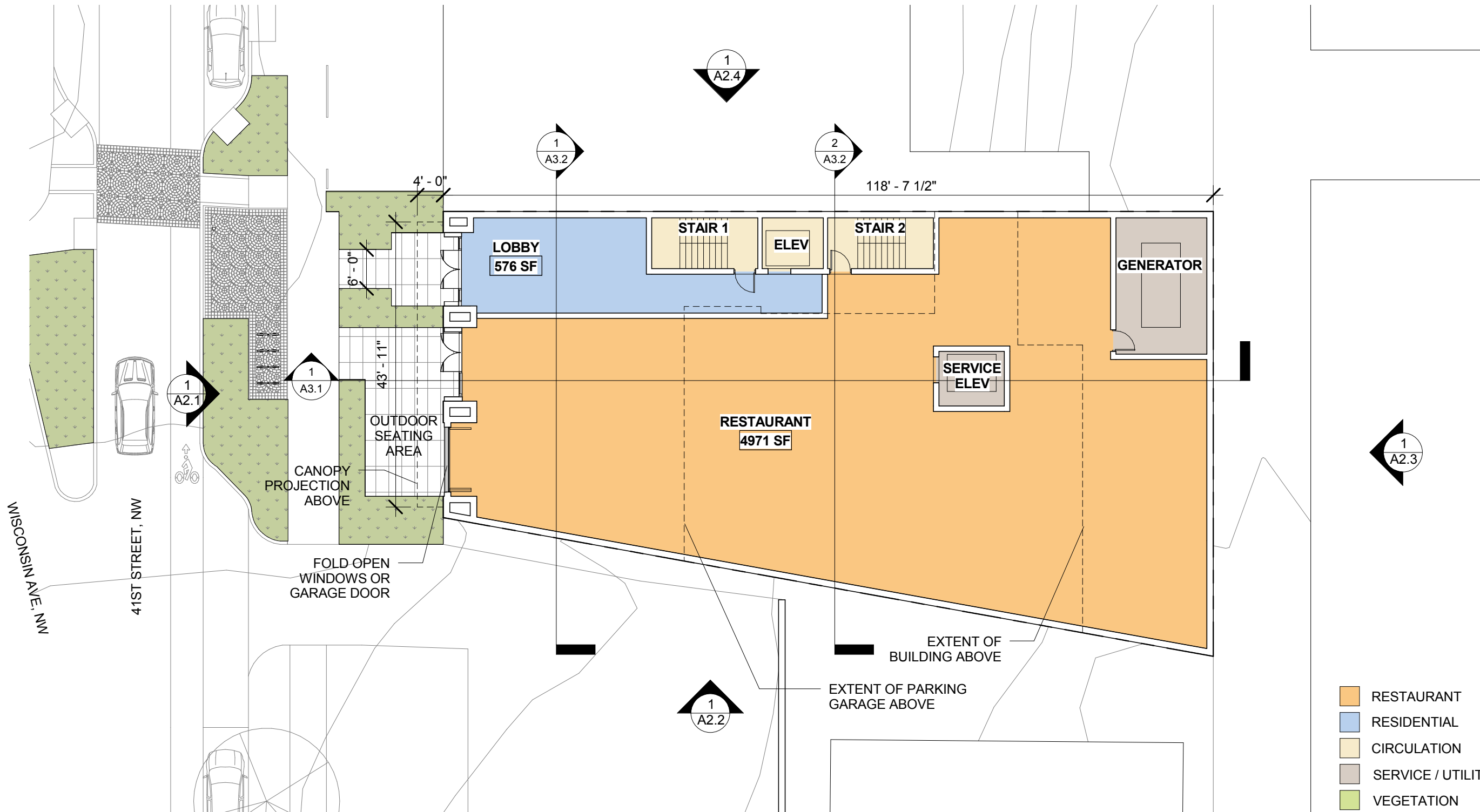
STRUCTURAL ENG
STRUCTURA
111 ROCKVILLE PIKE
SUITE 950
ROCKVILLE, MD 20850
301-987-9234

MEP ENGINEER
CAPITOL ENGINEERING GROUP
1825 K STREET NW
SUITE 375
WASHINGTON, DC 20006
202-216-0039

Tenleytown Apartments
4611 46th St NW
Washington, DC 20016

REVISIONS
1 Post-Hearing Submission 11/16/18

DATE: 1/16/18
PROJECT NO: 2016-042
DRAWN BY: AG
CHECKED BY: JMB



1
A1.2 **GROUND FLOOR PLAN**
1/16" = 1'-0"

FOR LANDSCAPING, PUBLIC SPACE AND ROOF DECK DESIGN SEE SHEETS L1.0 - L1.6

- RESTAURANT
- RESIDENTIAL
- CIRCULATION
- SERVICE / UTILITY
- VEGETATION

NOTE: ALL SF SHOWN ON PLANS ARE NET SF.

Bonstra Haresign
ARCHITECTS

Dancing Crab Properties, LLC
1901 RIVER ROAD
POTOMAC, MD 20854

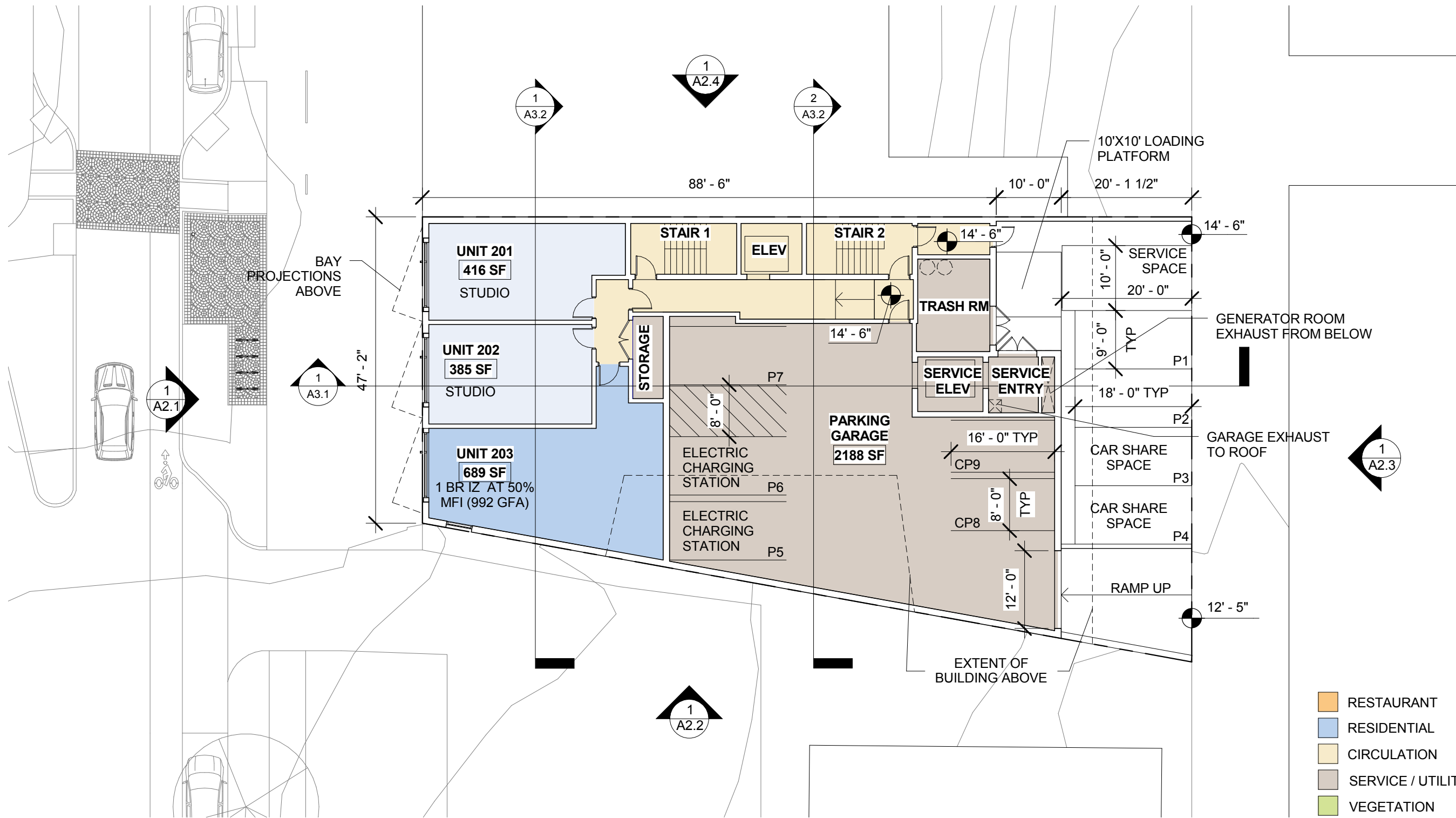
STRUCTURA
111 ROCKVILLE PIKE
SUITE 950
ROCKVILLE, MD 20850
301-987-9234

CAPITOL ENGINEERING GROUP
1825 K STREET NW
SUITE 375
WASHINGTON, DC 20006
202-216-0039

Tenleytown Apartments
4611 46th St. NW
Washington, DC 20016

REVISIONS
1 Post-Hearing Submission 11/16/18

DATE: 1/16/18
PROJECT NO: 2016-042
DRAWN BY: AG
CHECKED BY: JMBB



1 SECOND FLOOR PLAN
 A1.3 1/16" = 1'-0"

- RESTAURANT
- RESIDENTIAL
- CIRCULATION
- SERVICE / UTILITY
- VEGETATION

NOTE: ALL SF SHOWN ON PLANS ARE NET SF.

Bonstra Haresign
 ARCHITECTS

Dancing Crab Properties, LLC
 1301 RIVER ROAD
 POTOMAC, MD 20854

STRUCTURA
 111 ROCKVILLE PIKE
 SUITE 950
 ROCKVILLE, MD 20850
 301-987-9234

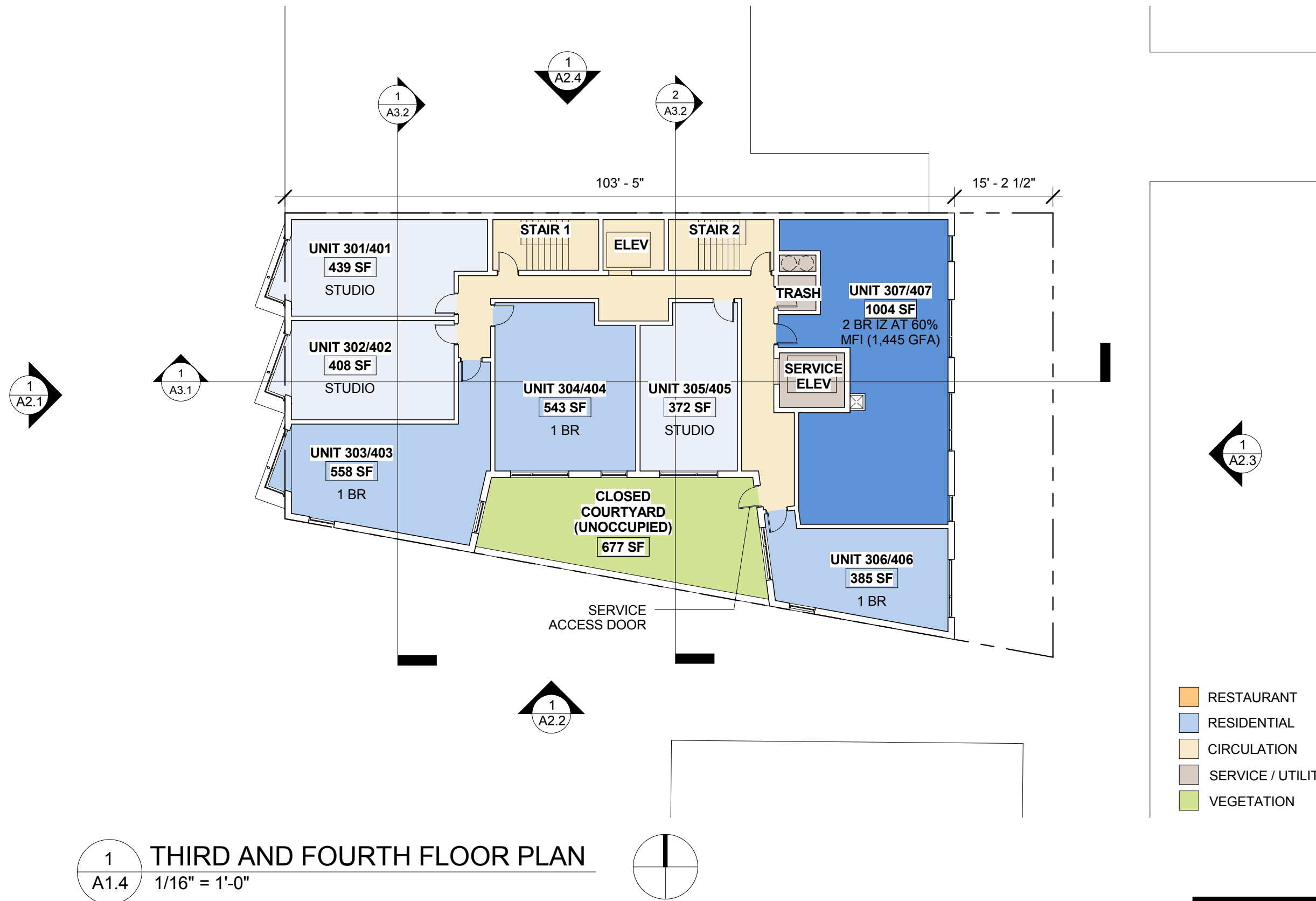
CAPITOL ENGINEERING GROUP
 1825 K STREET NW
 SUITE 375
 WASHINGTON, DC 20006
 202-216-0039

Tenleytown Apartments
 4611 46th St NW
 Washington, DC 20016

REVISIONS

1	Post-Hearing Submission 11/16/18
---	----------------------------------

DATE: 1/16/18
 PROJECT NO: 2016-042
 DRAWN BY: AG
 CHECKED BY: JMBB



1 THIRD AND FOURTH FLOOR PLAN
A1.4 1/16" = 1'-0"

- RESTAURANT
- RESIDENTIAL
- CIRCULATION
- SERVICE / UTILITY
- VEGETATION

NOTE: ALL SF SHOWN ON PLANS ARE NET SF.

Bonstra Haresign ARCHITECTS

THIRD + FOURTH FLOOR PLAN

A1.4

CLIENT
 Dancing Crab Properties, LLC
 1301 RIVER ROAD
 POTOMAC, MD 20854

STRUCTURAL ENG
 STRUCTURA
 111 ROCKVILLE PIKE
 SUITE 950
 ROCKVILLE, MD 20850
 301-987-9234

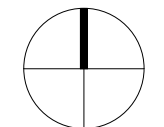
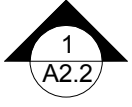
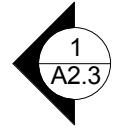
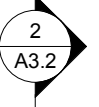
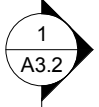
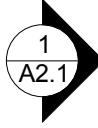
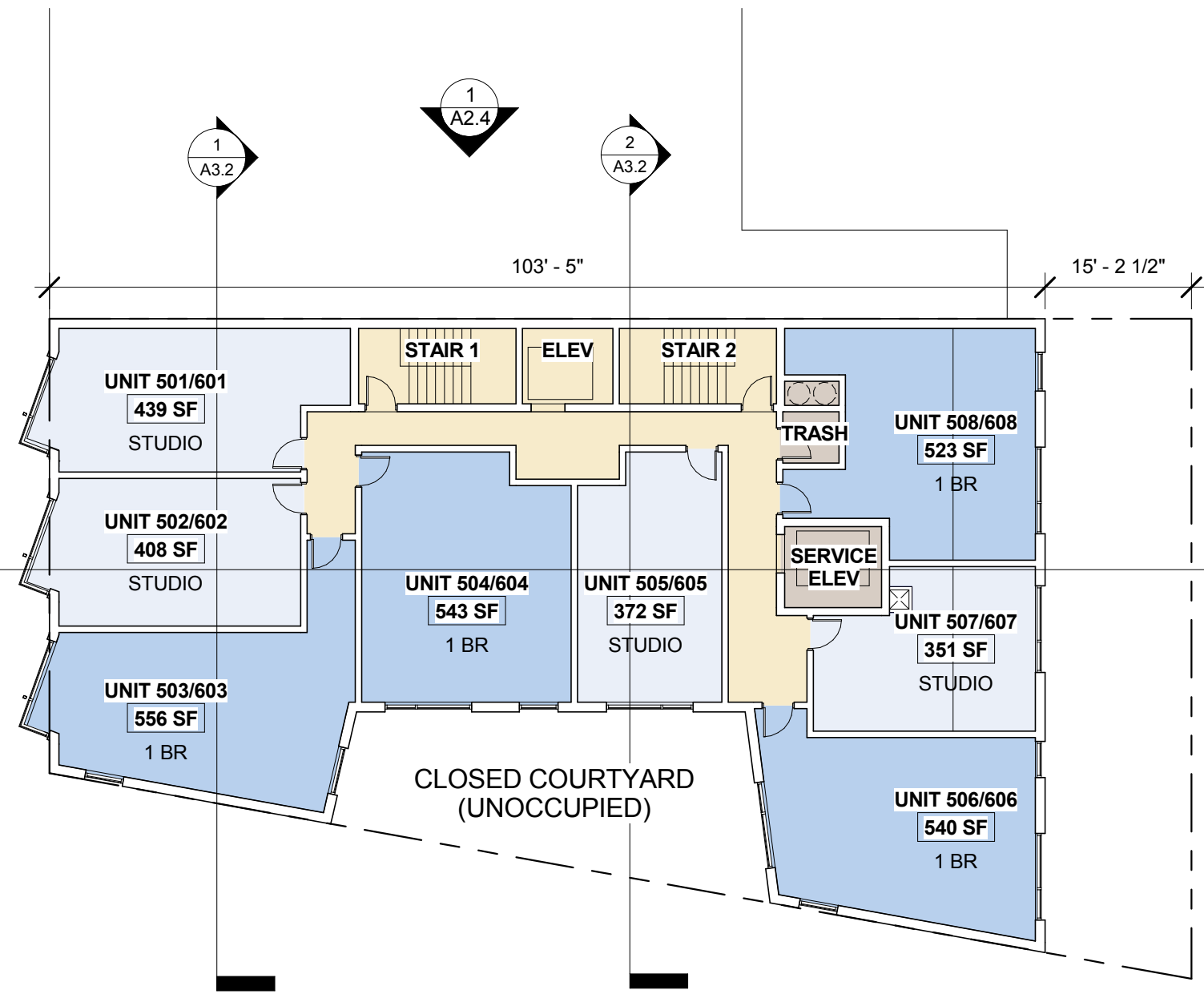
MEP ENGINEER
 CAPITOL ENGINEERING GROUP
 1825 K STREET NW
 SUITE 375
 WASHINGTON, DC 20006
 202-216-0039

Tenleytown Apartments
 4611 46th St, NW
 Washington, DC 20016

REVISIONS
 1 Post-Hearing Submission 11/16/18

DATE: 11/16/18
PROJECT NO: 2016-042
DRAWN BY: AG
CHECKED BY: JM/B

© 2018 - Bonstra | Haresign ARCHITECTS
 1728 Fourteenth Street, NW, Suite 300
 Washington, DC 20009-4309
 www.bonstra.com 202 588 9373 T



1
A1.5

FIFTH AND SIXTH FLOOR PLAN

1/16" = 1'-0"

- RESTAURANT
- RESIDENTIAL
- CIRCULATION
- SERVICE / UTILITY
- VEGETATION

NOTE: ALL SF SHOWN ON PLANS ARE NET SF.

Bonstra Haresign
ARCHITECTS

Dancing Crab Properties, LLC
1901 RIVER ROAD
POTOMAC, MD 20854

STRUCTURA
111 ROCKVILLE PIKE
SUITE 950
ROCKVILLE, MD 20850
301-987-9234

CAPITOL ENGINEERING GROUP
1825 K STREET NW
SUITE 375
WASHINGTON, DC 20006
202-216-0039

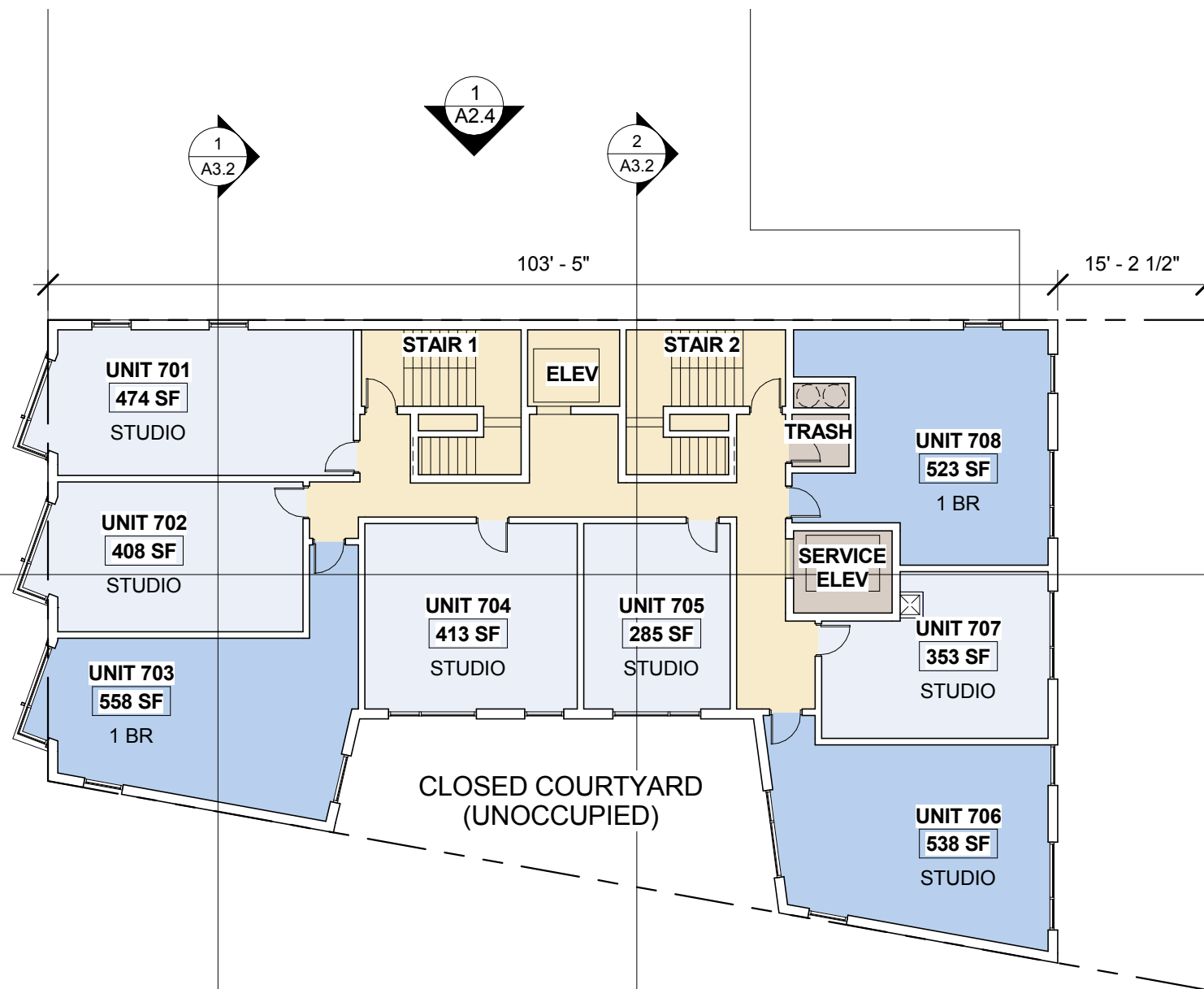
Tenleytown Apartments
4611 46th St NW
Washington, DC 20016

REVISIONS
1 Post-Hearing Submission 11/16/18

DATE: 1/16/18
PROJECT NO: 2016-042
DRAWN BY: AG
CHECKED BY: JMRB

FIFTH + SIXTH FLOOR PLAN

A1.5



1
A2.1

1
A3.1

1
A3.2

1
A2.4

2
A3.2

1
A2.3

1
A2.2

1
A1.6 SEVENTH FLOOR PLAN
1/16" = 1'-0"

- RESTAURANT
- RESIDENTIAL
- CIRCULATION
- SERVICE / UTILITY
- VEGETATION

NOTE: ALL SF SHOWN ON PLANS ARE NET SF.

Bonstra Haresign
ARCHITECTS

REVISIONS

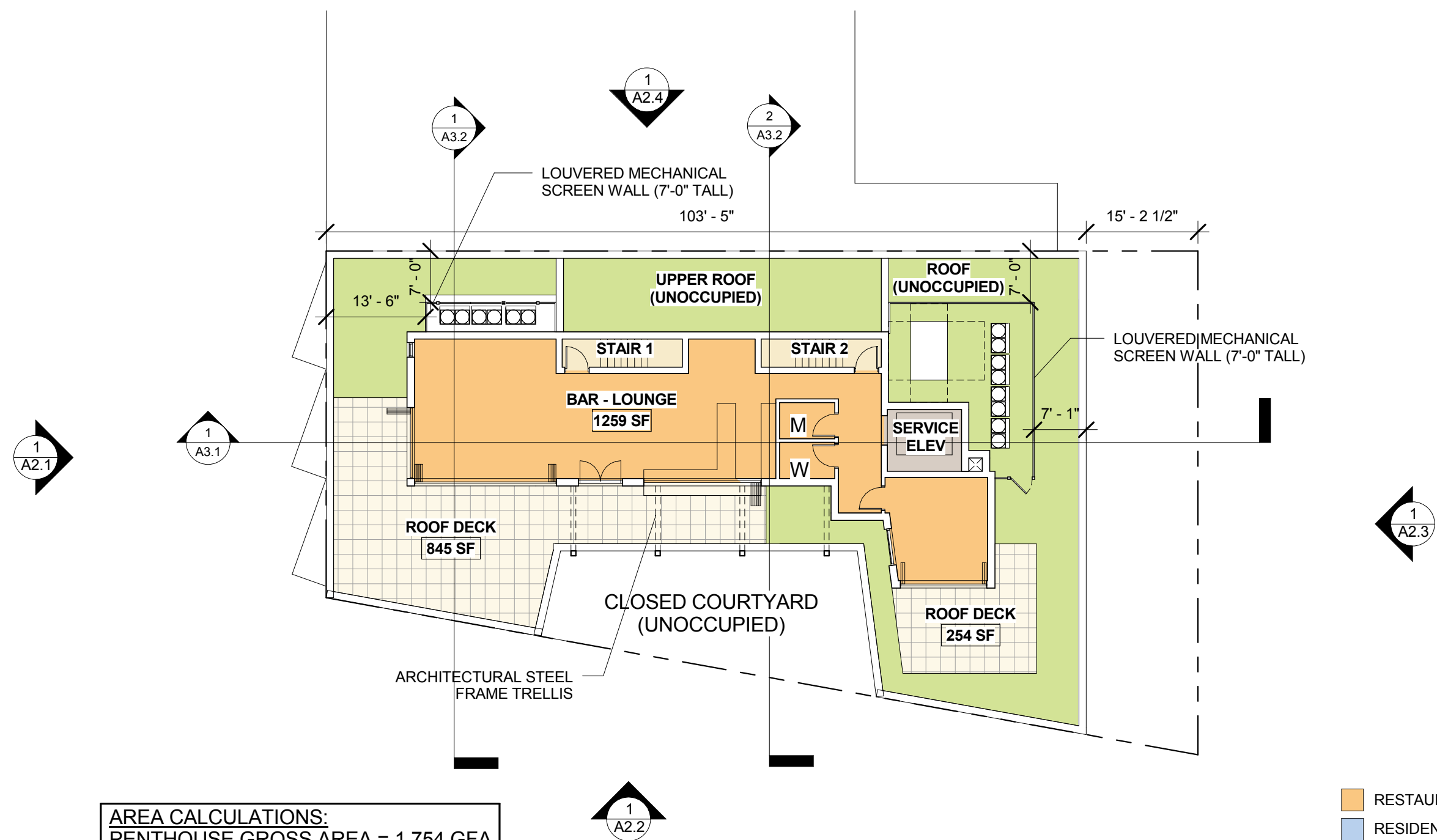
1	Post-Hearing Submission 11/16/18
DATE:	1/16/18
PROJECT NO:	2016-042
DRAWN BY:	AG
CHECKED BY:	JM/RB

Tenleytown Apartments
4611 46 1/2 1st Street, NW
Washington, DC 20016

CLIENT
Dancing Crab Properties, LLC
1801 RIVER ROAD
POTOMAC, MD 20854

STRUCTURAL ENG
STRUCTURA
111 ROCKVILLE PIKE
SUITE 950
ROCKVILLE, MD 20850
301-987-9234

MEP ENGINEER
CAPITOL ENGINEERING GROUP
1825 K STREET NW
SUITE 375
WASHINGTON, DC 20006
202-216-0039



AREA CALCULATIONS:
 PENTHOUSE GROSS AREA = 1,754 GFA
 PENTHOUSE NSF = 1,259 SF

1 PENTHOUSE FLOOR PLAN
 A1.7 1/16" = 1'-0"

- RESTAURANT
- RESIDENTIAL
- CIRCULATION
- SERVICE / UTILITY
- VEGETATION

NOTE: ALL SF SHOWN ON PLANS ARE NET SF.

Bonstra Haresign
 ARCHITECTS

CLIENT
 Dancing Crab Properties, LLC
 1801 RIVER ROAD
 POTOMAC, MD 20854

STRUCTURAL ENGINEER
 STRUCTURA
 111 ROCKVILLE PIKE
 SUITE 950
 ROCKVILLE, MD 20850
 301-987-9234

MEP ENGINEER
 CAPITOL ENGINEERING GROUP
 1825 K STREET NW
 SUITE 375
 WASHINGTON, DC 20006
 202-216-0039

Tenleytown Apartments
 4811 46th Street, NW
 Washington, DC 20016

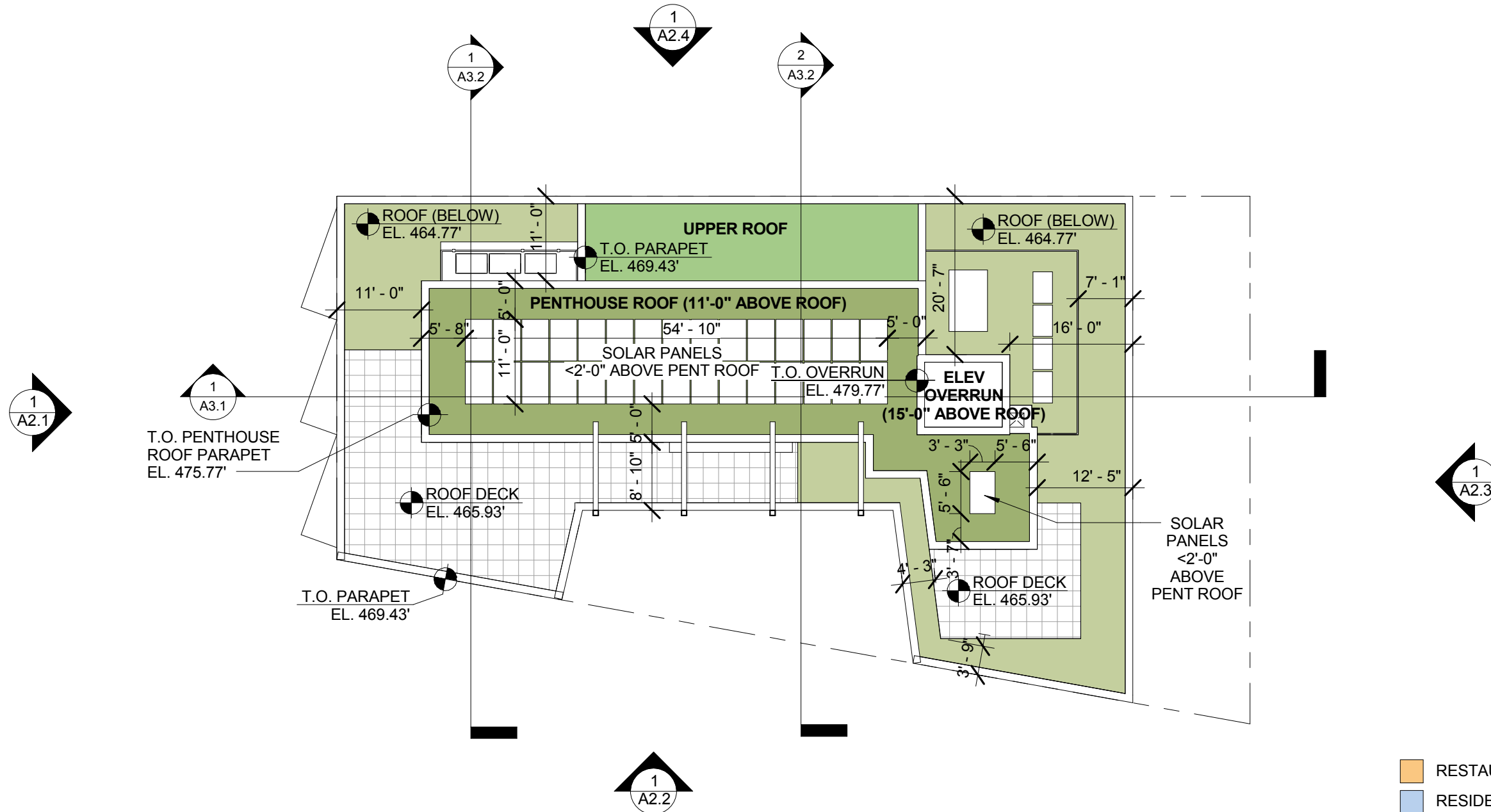
REVISIONS

1	Post-Hearing Submission 11/16/18

DATE: 1/16/18
 PROJECT NO: 2016-042
 DRAWN BY: AG
 CHECKED BY: JMB

PENTHOUSE FLOOR PLAN

A1.7



1
A1.8 PENTHOUSE ROOF PLAN
1/16" = 1'-0"

- RESTAURANT
- RESIDENTIAL
- CIRCULATION
- SERVICE / UTILITY
- VEGETATION

Dancing Crab Properties, LLC
1301 RIVER ROAD
POTOMAC, MD 20854

STRUCTURA
111 ROCKVILLE PIKE
SUITE 950
ROCKVILLE, MD 20850
301-987-9234

CAPITOL ENGINEERING GROUP
1825 K STREET NW
SUITE 375
WASHINGTON, DC 20006
202-216-0039

Tenleytown Apartments
4611 46th St NW
Washington, DC 20016

REVISIONS
1 Post-Hearing Submission 11/16/18

DATE: 1/16/18
PROJECT NO: 2016-042
DRAWN BY: AG
CHECKED BY: JMRB

Bonstra Haresign
ARCHITECTS

PENTHOUSE ROOF PLAN

1728 Fourteenth Street, NW, Suite 300
Washington, DC 20009-4309

www.bonstra.com 202 588 9373 T

A1.8



1 WEST ELEVATION
A2.1 1/16" = 1'-0"

[signage] APPROXIMATE LOCATION OF FRONT LIT BUILDING AND RETAIL SIGNAGE.

Bonstra Haresign
ARCHITECTS

WEST EXTERIOR ELEVATION

Dancing Crab Properties, LLC
1901 RIVER ROAD
POTOMAC, MD 20854

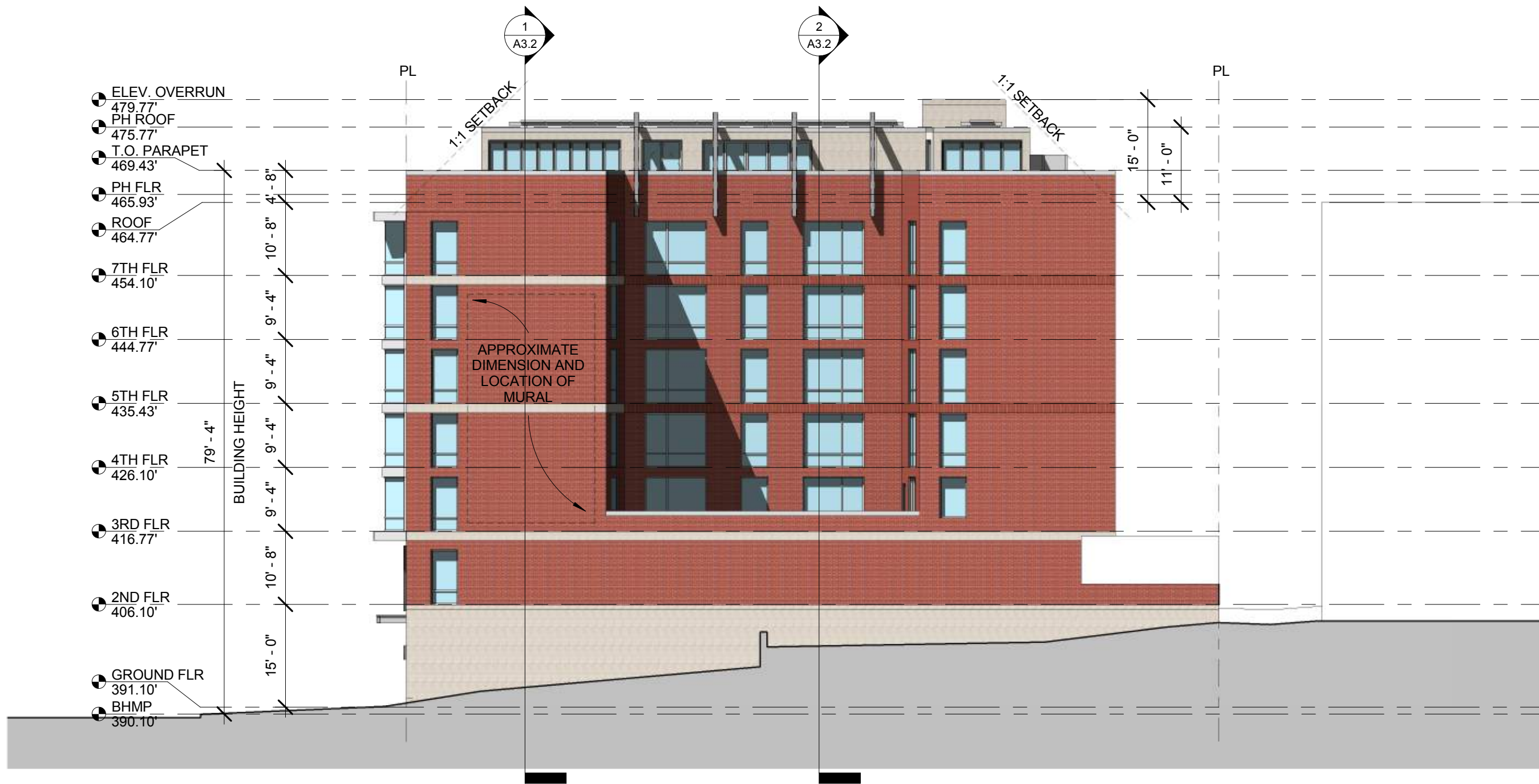
STRUCTURAL
111 ROCKVILLE PIKE
SUITE 950
ROCKVILLE, MD 20850
301-987-9234

MEP ENGINEER
CAPITOL ENGINEERING GROUP
1825 K STREET NW
SUITE 375
WASHINGTON, DC 20006
202-216-0039

Tenleytown Apartments
4611 46th St NW
Washington, DC 20016

REVISIONS
1 Post-Hearing Submission 11/16/18

DATE: 1/16/18
PROJECT NO: 2016-042
DRAWN BY: AG
CHECKED BY: JM/RB



1 SOUTH ELEVATION
 A2.2 1/16" = 1'-0"

Dancing Crab Properties, LLC
 1301 RIVER ROAD
 POTOMAC, MD 20854

STRUCTURA
 111 ROCKVILLE PIKE
 SUITE 950
 ROCKVILLE, MD 20850
 301-987-9234

CAPITOL ENGINEERING GROUP
 1825 K STREET NW
 SUITE 375
 WASHINGTON, DC 20006
 202-216-0039

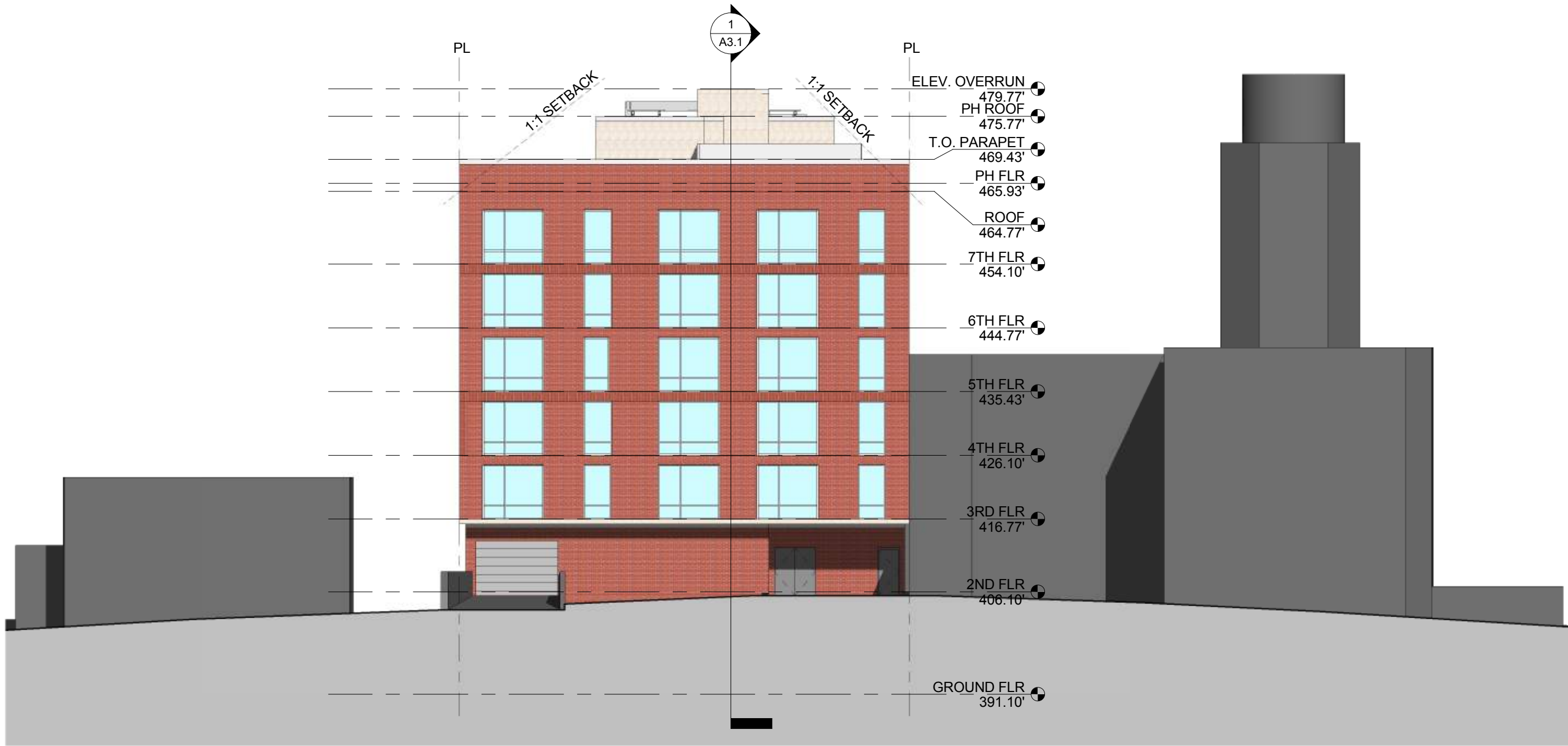
Tenleytown Apartments
 4611 46th St NW
 Washington, DC 20016

REVISIONS
 1 Post-Hearing Submission 11/16/18

DATE: 1/16/18
 PROJECT NO: 2016-042
 DRAWN BY: AG
 CHECKED BY: JMB

Bonstra Haresign
 ARCHITECTS

SOUTH EXTERIOR ELEVATION



1 EAST ELEVATION
A2.3 1/16" = 1'-0"

CLIENT
Dancing Crab Properties, LLC
1901 RIVER ROAD
POTOMAC, MD 20854

STRUCTURAL ENG
STRUCTURA
111 ROCKVILLE PIKE
SUITE 950
ROCKVILLE, MD 20850
301-987-9234

MEP ENGINEER
CAPITOL ENGINEERING GROUP
1825 K STREET NW
SUITE 375
WASHINGTON, DC 20006
202-216-0039

Tenleytown Apartments
4811 46th St NW
Washington, DC 20016

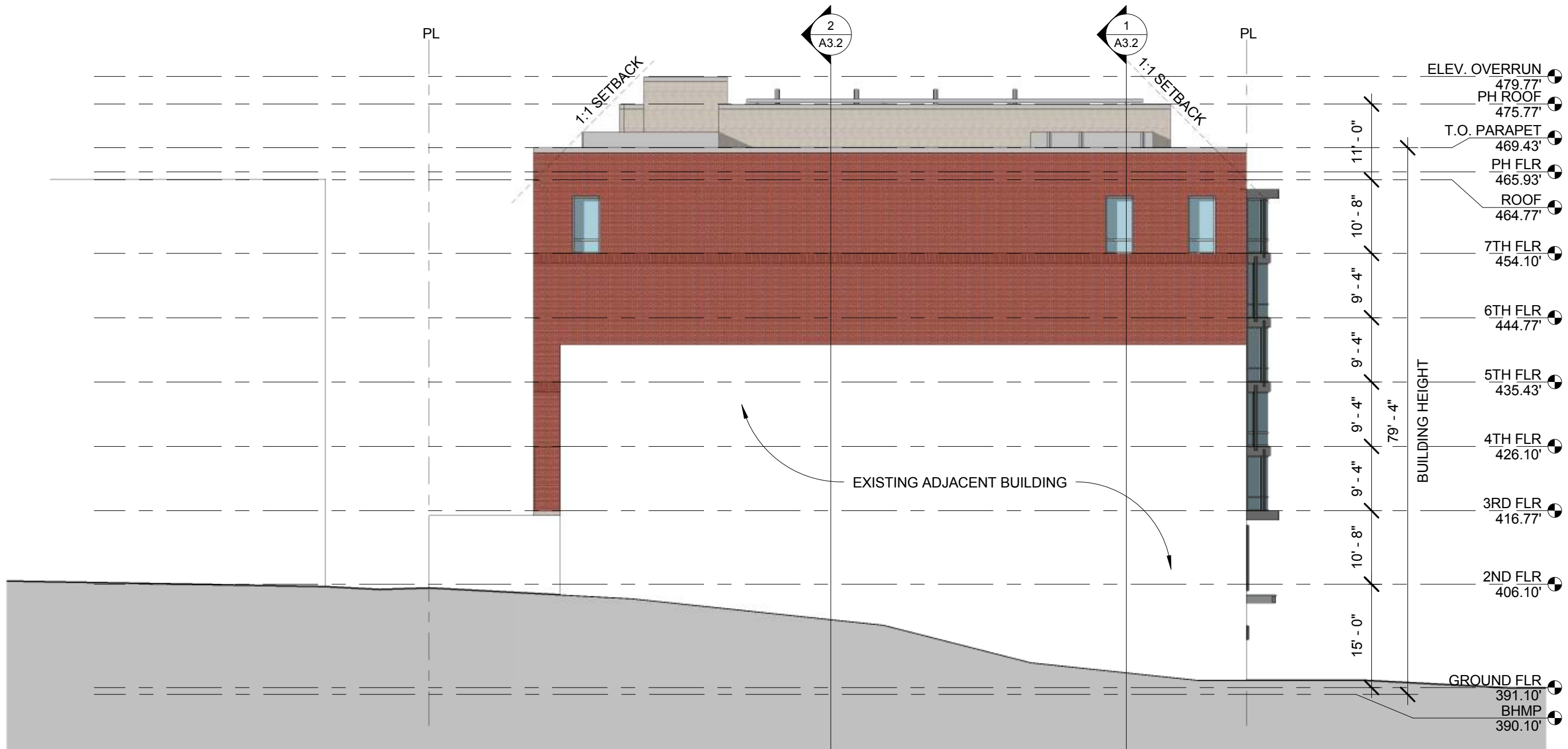
REVISIONS

1	Post-Hearing Submission 11/16/18

DATE: 1/16/18
PROJECT NO: 2016-042
DRAWN BY: AG
CHECKED BY: JMB

Bonstra Haresign
ARCHITECTS

EAST EXTERIOR ELEVATION



1 NORTH ELEVATION
A2.4 1/16" = 1'-0"

Dancing Crab Properties, LLC
1901 RIVER ROAD
POTOMAC, MD 20854

CLIENT
STRUCTURA
111 ROCKVILLE PIKE
SUITE 950
ROCKVILLE, MD 20850
301-987-9234

MEP ENGINEER
CAPITOL ENGINEERING GROUP
1825 K STREET NW
SUITE 375
WASHINGTON, DC 20006
202-216-0039

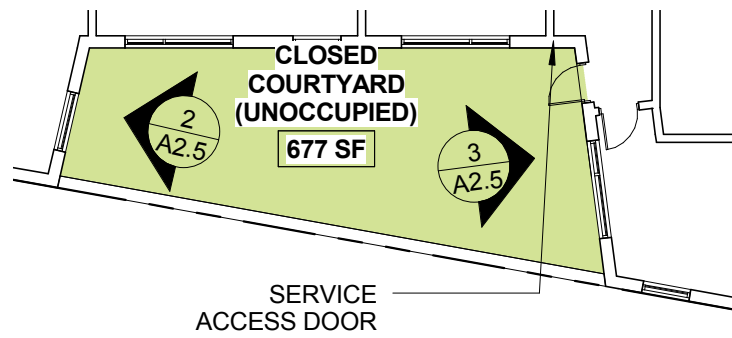
Tenleytown Apartments
4611 46th Street, NW
Washington, DC 20016

REVISIONS
1 Post-Hearing Submission 11/16/18

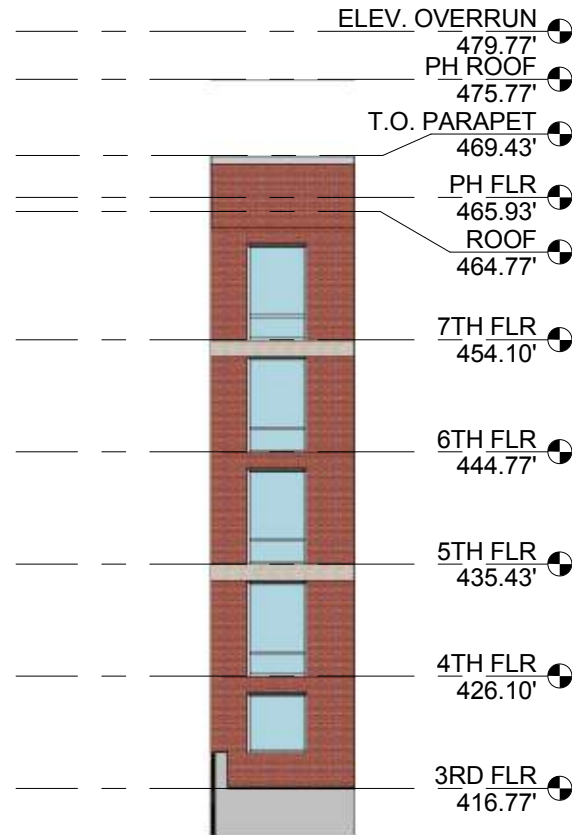
DATE: 1/16/18
PROJECT NO: 2016-042
DRAWN BY: AG
CHECKED BY: JMB

Bonstra Harsign
ARCHITECTS

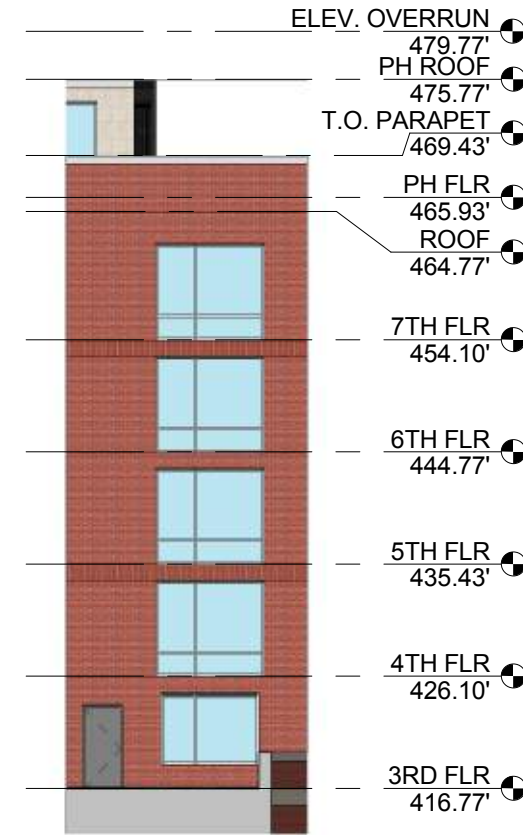
NORTH EXTERIOR ELEVATION



1 COURTYARD PLAN
A2.5 1/16" = 1'-0"



2 WEST ELEVATION - COURTYARD
A2.5 1/16" = 1'-0"



3 EAST ELEVATION - COURTYARD
A2.5 1/16" = 1'-0"

CLIENT: Dancing Crab Properties, LLC
 1801 RIVER ROAD
 POTOMAC, MD 20854

STRUCTURAL ENGINEER: STRUCTURA
 111 ROCKVILLE PIKE
 SUITE 950
 ROCKVILLE, MD 20850
 301-987-9234

MECHANICAL ENGINEER: CAPITOL ENGINEERING GROUP
 1825 K STREET NW
 SUITE 375
 WASHINGTON, DC 20006
 202-216-0039

Tenleytown Apartments
 4811 46th St NW
 Washington, DC 20016

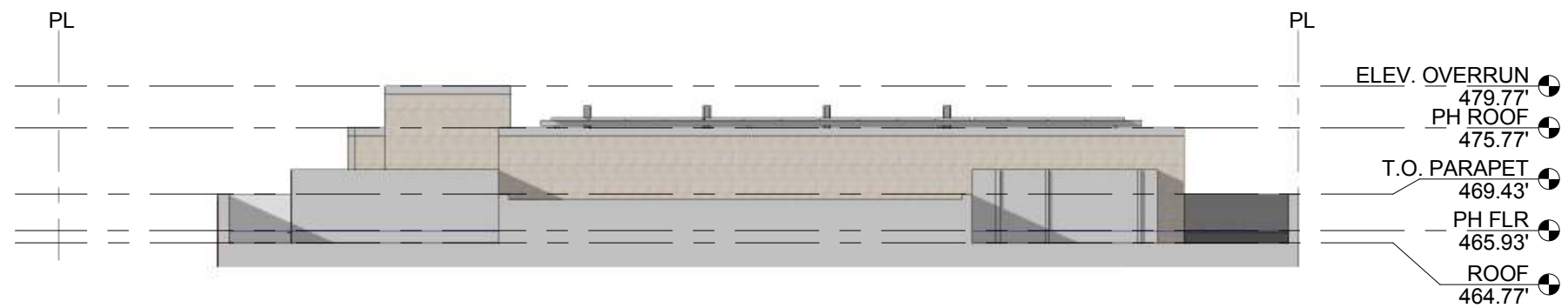
REVISIONS
 1 Post-Hearing Submission 11/16/18

DATE: 11/16/18
 PROJECT NO: 2016-042
 DRAWN BY: AG
 CHECKED BY: JMBB

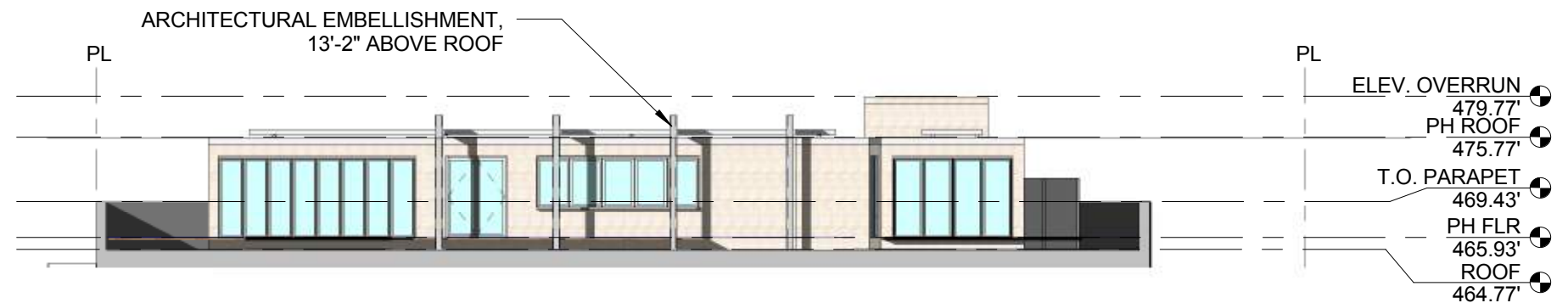
Bonstra Haresign ARCHITECTS
 COURTYARD ELEVATIONS

© 2018 - Bonstra | Haresign ARCHITECTS
 1728 Fourteenth Street, NW, Suite 300
 Washington, DC 20009-4309
 www.bonstra.com 202 588 9373 T

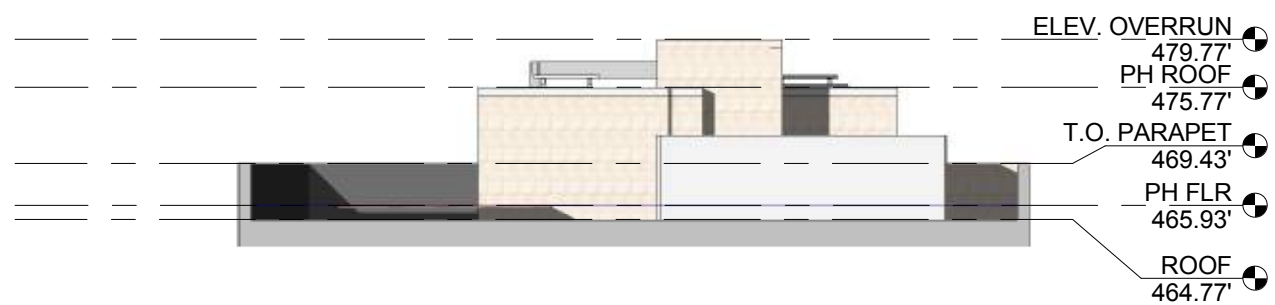
A2.5



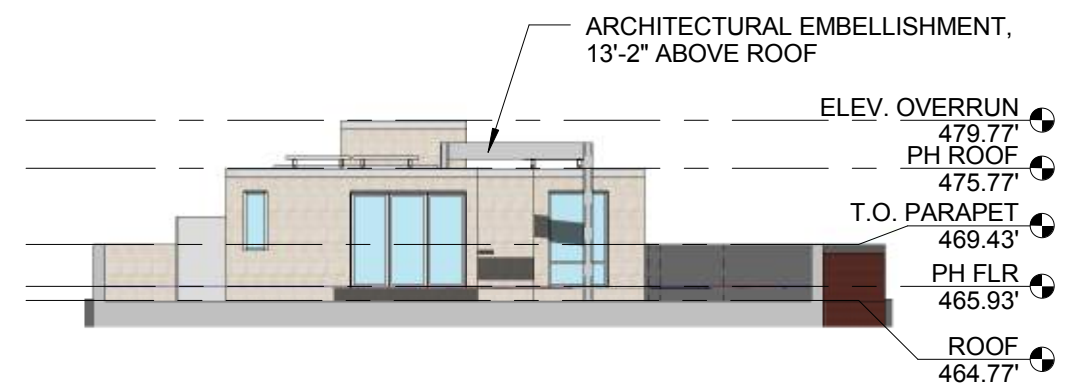
4 NORTH ELEVATION - PENTHOUSE
A2.6 1/16" = 1'-0"



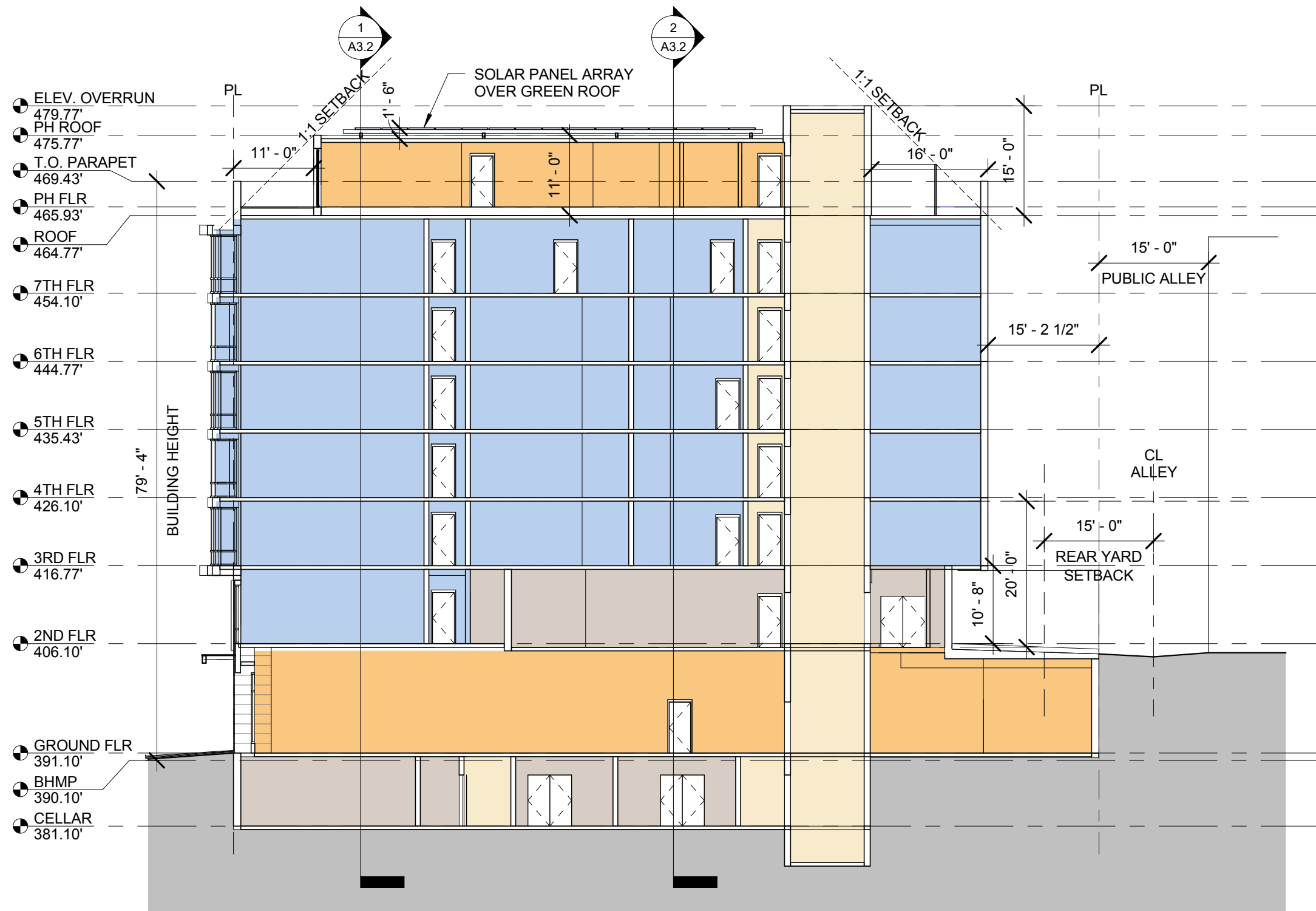
3 SOUTH ELEVATION - PENTHOUSE
A2.6 1/16" = 1'-0"



2 EAST ELEVATION - PENTHOUSE
A2.6 1/16" = 1'-0"



1 WEST ELEVATION - PENTHOUSE
A2.6 1/16" = 1'-0"



1 LONGITUDINAL SECTION
 A3.1 1/16" = 1'-0"

CLIENT
Dancing Crab Properties, LLC
 1301 RIVER ROAD
 POTOMAC, MD 20854

STRUCTURAL ENG
STRUCTURA
 111 ROCKVILLE PIKE
 SUITE 950
 ROCKVILLE, MD 20850
 301-987-9234

MEP ENGINEER
CAPITOL ENGINEERING GROUP
 1825 K STREET NW
 SUITE 375
 WASHINGTON, DC 20006
 202-216-0039

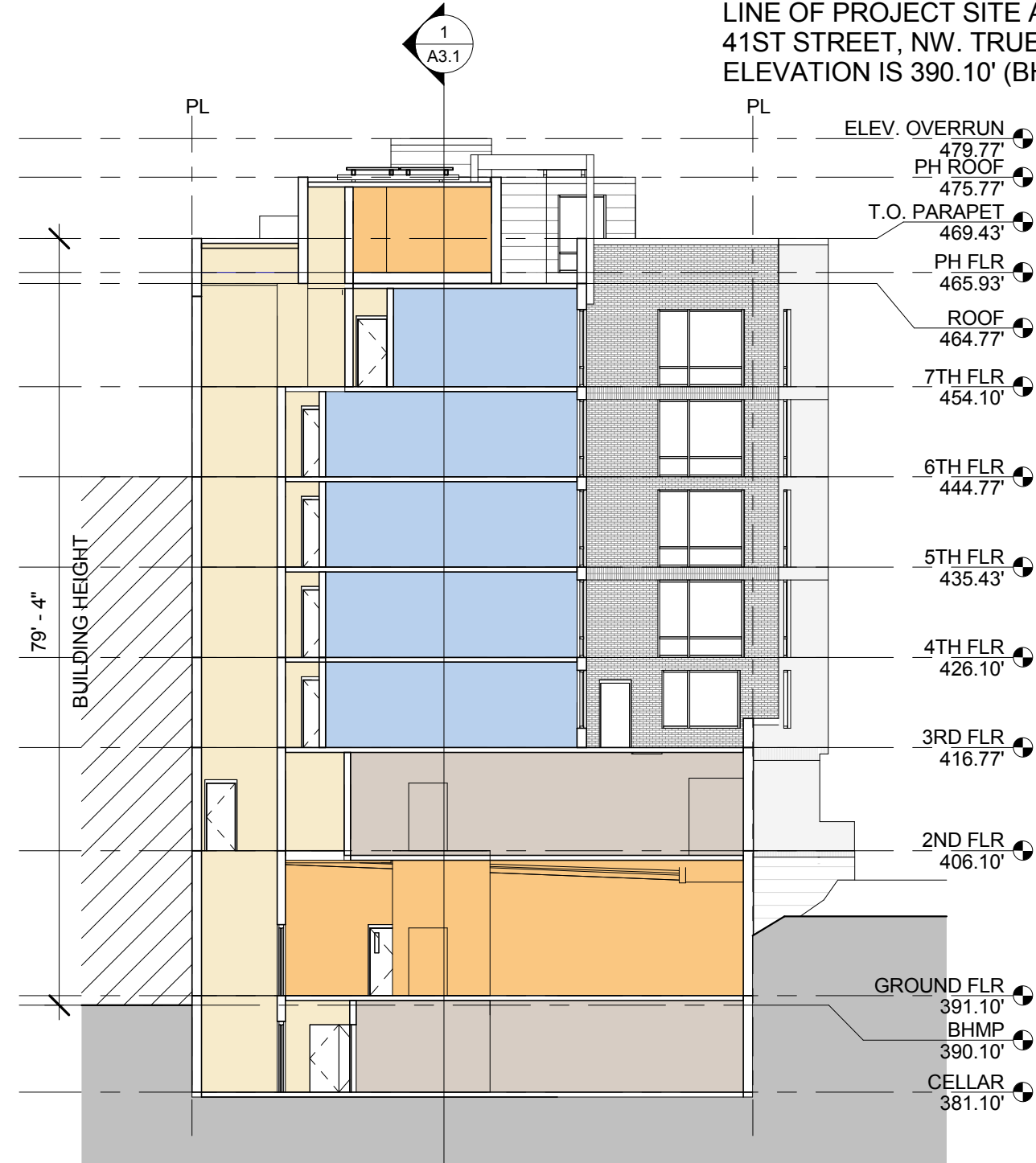
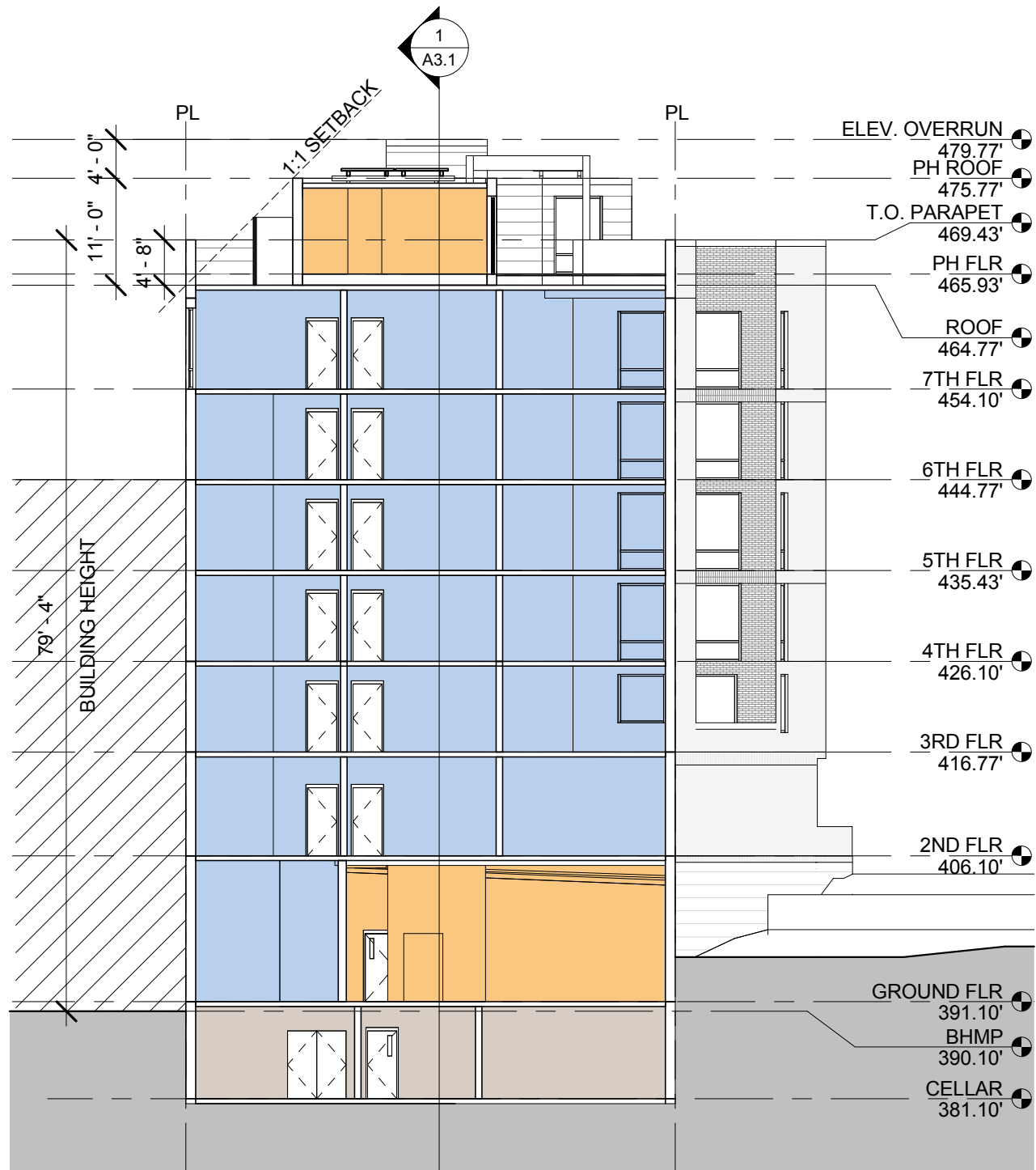
PROJECT
Tenleytown Apartments
 4611 46th St SE
 Washington, DC 20016

REVISIONS

1	Post-Hearing Submission 11/16/18

DATE: 1/16/18
 PROJECT NO: 2016-042
 DRAWN BY: AG
 CHECKED BY: JMRB

NOTE: PROJECT REFERENCE POINT (0'-0") IS AT TOP OF CURB AT CENTER LINE OF PROJECT SITE AT 41ST STREET, NW. TRUE ELEVATION IS 390.10' (BHMP).



1 CROSS SECTION 1
A3.2 1/16" = 1'-0"

2 CROSS SECTION 2
A3.2 1/16" = 1'-0"

Dancing Crab Properties, LLC
1301 RIVER ROAD
POTOMAC, MD 20854

STRUCTURAL ENGINEER
STRUCTURA
111 ROCKVILLE PIKE
SUITE 950
ROCKVILLE, MD 20850
301-987-9234

MEP ENGINEER
CAPITOL ENGINEERING GROUP
1825 K STREET NW
SUITE 375
WASHINGTON, DC 20006
202-216-0039

Tenleytown Apartments
4611 46th St NW
Washington, DC 20016

REVISIONS

1	Post-Hearing Submission 11/16/18
---	----------------------------------

DATE: 1/16/18
PROJECT NO: 2016-042
DRAWN BY: AG
CHECKED BY: JMB

Bonstra Haresign ARCHITECTS

1728 Fourteenth Street, NW, Suite 300
Washington, DC 20009-4309
www.bonstra.com 202 588 9373 T

NORTH-SOUTH BUILDING SECTION

A3.2



ALUMINUM - CLEAR ANODIZED



ARCHITECTURAL CAST STONE



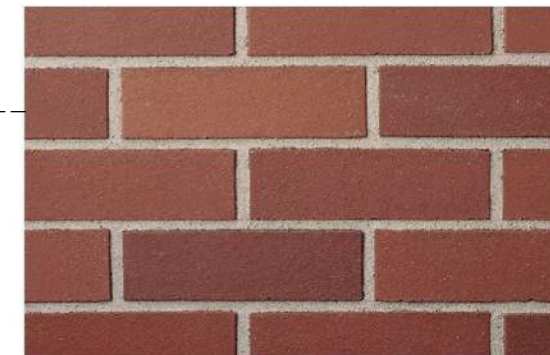
LIMESTONE - HONED



GRANITE - FLAMED



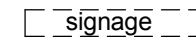
FIBER CEMENT



RED BRICK



LINEAR LIGHT FIXTURE



APPROXIMATE LOCATION OF FRONT LIT BUILDING AND RETAIL SIGNAGE.

CLIENT
 Dancing Crab Properties, LLC
 1901 RIVER ROAD
 POTOMAC, MD 20854

STRUCTURAL ENG.
 STRUCTURA
 111 ROCKVILLE PIKE
 SUITE 950
 ROCKVILLE, MD 20850
 301-987-9234

MEP ENGINEER
 CAPITOL ENGINEERING GROUP
 1825 K STREET NW
 SUITE 375
 WASHINGTON, DC 20006
 202-216-0039

Tenleytown Apartments
 4811 46th St NW
 Washington, DC 20016

REVISIONS

1	Post-Hearing Submission 11/16/18

DATE: 11/16/18
 PROJECT NO: 2018-042
 DRAWN BY: AG
 CHECKED BY: JMB

Bonstra Haresign ARCHITECTS

1728 Fourteenth Street, NW, Suite 300
 Washington, DC 20009-4309

www.bonstra.com 202 588 9373 T

FACADE MATERIALS



VIEW LOOKING NORTHEAST

CLIENT
Dancing Crab Properties, LLC
 1301 RIVER ROAD
 POTOMAC, MD 20854

STRUCTURAL ENGINEER
STRUCTURA
 111 ROCKVILLE PIKE
 SUITE 950
 ROCKVILLE, MD 20850
 301-987-9234

MEP ENGINEER
CAPITOL ENGINEERING GROUP
 1825 K STREET NW
 SUITE 375
 WASHINGTON, DC 20006
 202-216-0039

Tenleytown Apartments
 4611 46th St, NW
 Washington, DC 20016

REVISIONS
 1 Post-Hearing Submission 11/16/18

DATE: 1/16/18
 PROJECT NO: 2016-042
 DRAWN BY: AG
 CHECKED BY: JM/BB

Bonstra Haresign
 ARCHITECTS

3D VIEW - FACING NORTHEAST

1728 Fourteenth Street, NW, Suite 300
 Washington, DC 20009-4309

www.bonstra.com 202 588 9373 T

A5.1



ENTRY/OUTDOOR SEATING AREA: VIEW FROM SIDEWALK

CLIENT
Dancing Crab Properties, LLC
 1301 RIVER ROAD
 POTOMAC, MD 20854

STRUCTURAL ENG
STRUCTURA
 111 ROCKVILLE PIKE
 SUITE 950
 ROCKVILLE, MD 20850
 301-987-9234

MEP ENGINEER
CAPITOL ENGINEERING GROUP
 1825 K STREET NW
 SUITE 375
 WASHINGTON, DC 20006
 202-216-0039

Tenleytown Apartments
 4611 46th St NW
 Washington, DC 20016

REVISIONS

1	Post-Hearing Submission 11/16/18

DATE: 1/16/18
 PROJECT NO: 2016-042
 DRAWN BY: AG
 CHECKED BY: JM/GB

Bonstra Haresign
 ARCHITECTS

3D VIEW - PUBLIC SPACE

1728 Fourteenth Street, NW, Suite 300
 Washington, DC 20009-4309

www.bonstra.com 202 588 9373 T

A5.2



AERIAL VIEW

CLIENT
Dancing Crab Properties, LLC
 1301 RIVER ROAD
 POTOMAC, MD 20854

STRUCTURAL ENG
STRUCTURA
 111 ROCKVILLE PIKE
 SUITE 950
 ROCKVILLE, MD 20850
 301-987-9234

MEP ENGINEER
CAPITOL ENGINEERING GROUP
 1825 K STREET NW
 SUITE 375
 WASHINGTON, DC 20006
 202-216-0039

Tenleytown Apartments
 4611 46th St NW
 Washington, DC 20016

REVISIONS

1	Post-Hearing Submission 11/16/18

DATE: 1/16/18
 PROJECT NO: 2016-042
 DRAWN BY: AG
 CHECKED BY: JM/RB

Bonstra Haresign
 ARCHITECTS

3D VIEW - ROOFTOP AERIAL

1728 Fourteenth Street, NW, Suite 300
 Washington, DC 20009-4309

www.bonstra.com 202 588 9373 T

A5.3



ROOFTOP TERRACE: VIEW LOOKING NORTHEAST

CLIENT
Dancing Crab Properties, LLC
 1801 RIVER ROAD
 POTOMAC, MD 20854

STRUCTURAL ENG.
STRUCTURA
 111 ROCKVILLE PIKE
 SUITE 950
 ROCKVILLE, MD 20850
 301-987-9234

MEP ENGINEER
CAPITOL ENGINEERING GROUP
 1825 K STREET NW
 SUITE 375
 WASHINGTON, DC 20006
 202-216-0039

Tenleytown Apartments
 4811 46th St NW
 Washington, DC 20016

REVISIONS
 1 Post-Hearing Submission 11/16/18

DATE: 1/16/18
 PROJECT NO: 2016-042
 DRAWN BY: AG
 CHECKED BY: JMB

Bonstra Haresign
 ARCHITECTS

3D VIEW - ROOFTOP TERRACE

1728 Fourteenth Street, NW, Suite 300
 Washington, DC 20009-4309

www.bonstra.com 202 588 9373 T

A5.4



STREET VIEW LOOKING NORTH

CLIENT
Dancing Crab Properties, LLC
 1801 RIVER ROAD
 POTOMAC, MD 20854

STRUCTURAL ENG.
 STRUCTURA
 111 ROCKVILLE PIKE
 SUITE 950
 ROCKVILLE, MD 20850
 301-987-9234

MEP ENGINEER
 CAPITOL ENGINEERING GROUP
 1825 K STREET NW
 SUITE 375
 WASHINGTON, DC 20006
 202-216-0039

Tenleytown Apartments
 4811 46th St 1st Street, NW
 Washington, DC 20016

REVISIONS

1	Post-Hearing Submission 11/16/18

DATE: 1/16/18
 PROJECT NO: 2016-042
 DRAWN BY: AG
 CHECKED BY: JMBB

Bonstra Haresign
 ARCHITECTS

STREET VIEW LOOKING NORTH



STREET VIEW LOOKING SOUTH

CLIENT
Dancing Crab Properties, LLC
 1801 RIVER ROAD
 POTOMAC, MD 20854

STRUCTURAL ENG.
STRUCTURA
 111 ROCKVILLE PIKE
 SUITE 950
 ROCKVILLE, MD 20850
 301-987-9234

MEP ENGINEER
CAPITOL ENGINEERING GROUP
 1825 K STREET NW
 SUITE 375
 WASHINGTON, DC 20006
 202-216-0039

Tenleytown Apartments
 4811 46th St NW
 Washington, DC 20016

REVISIONS

1	Post-Hearing Submission 11/16/18

DATE: 1/16/18
 PROJECT NO: 2016-042
 DRAWN BY: AG
 CHECKED BY: JMBB

Bonstra Haresign
 ARCHITECTS

STREET VIEW LOOKING SOUTH