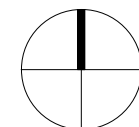


-  SIDEWALKS
-  SHARED BIKE PATH
-  DEDICATED BIKE PATH
-  ONE-WAY PRIMARY STREET
-  TWO-WAY PRIMARY STREET
-  ONE-WAY SECONDARY STREET
-  TWO-WAY SECONDARY STREET



**Dancing Crab Properties, LLC**  
 1301 RIVER ROAD  
 POTOMAC, MD 20854

**STRUCTURA**  
 111 ROCKVILLE PIKE  
 SUITE 950  
 ROCKVILLE, MD 20850  
 301-987-9234

**CAPITOL ENGINEERING GROUP**  
 1825 K STREET NW  
 SUITE 375  
 WASHINGTON, DC 20006  
 202-216-0039

**Tenleytown Apartments**  
 4611-4615 41st Street, NW  
 Washington, DC 20016

REVISIONS		
1	ZC Public Hearing	10/29/18

DATE:	10/29/18
PROJECT NO:	2016-042
DRAWN BY:	AG
CHECKED BY:	JM/RB

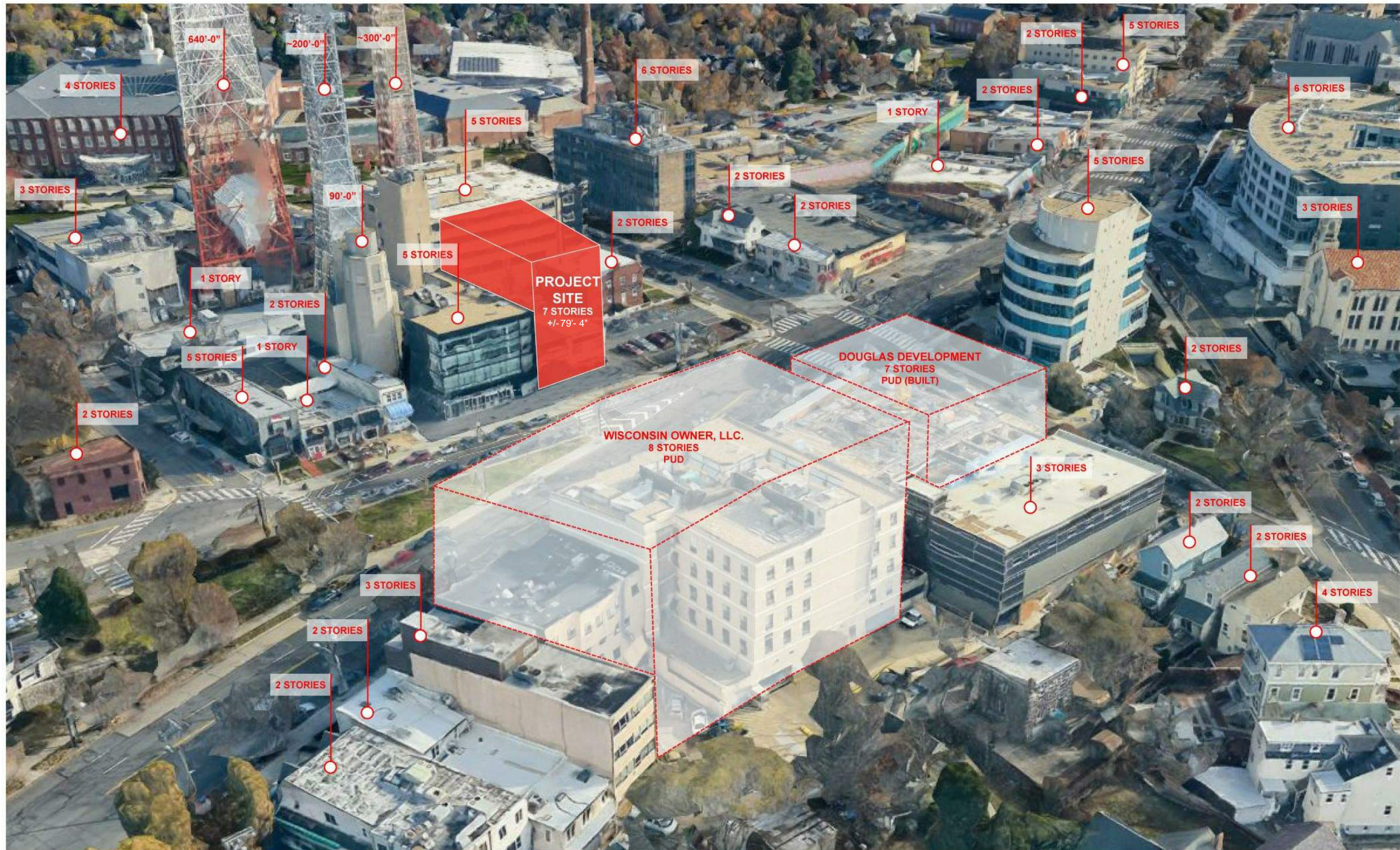
**Bonstra Haresign**  
 ARCHITECTS

CIRCULATION PLAN

1728 Fourteenth Street, NW, Suite 300  
 Washington, DC 20009-4309

www.bonstra.com 202 588 9373 T

**A0.13**



CLIENT  
**Dancing Crab Properties, LLC**  
 1301 RIVER ROAD  
 POTOMAC, MD 20854

STRUCTURAL ENG  
 STRUCTURA  
 111 ROCKVILLE PIKE  
 SUITE 950  
 ROCKVILLE, MD 20850  
 301-987-9234

MEP ENGINEER  
 CAPITOL ENGINEERING GROUP  
 1825 K STREET NW  
 SUITE 375  
 WASHINGTON, DC 20006  
 202-216-0039

**Tenleytown Apartments**  
 4611 46th St NW  
 Washington, DC 20016

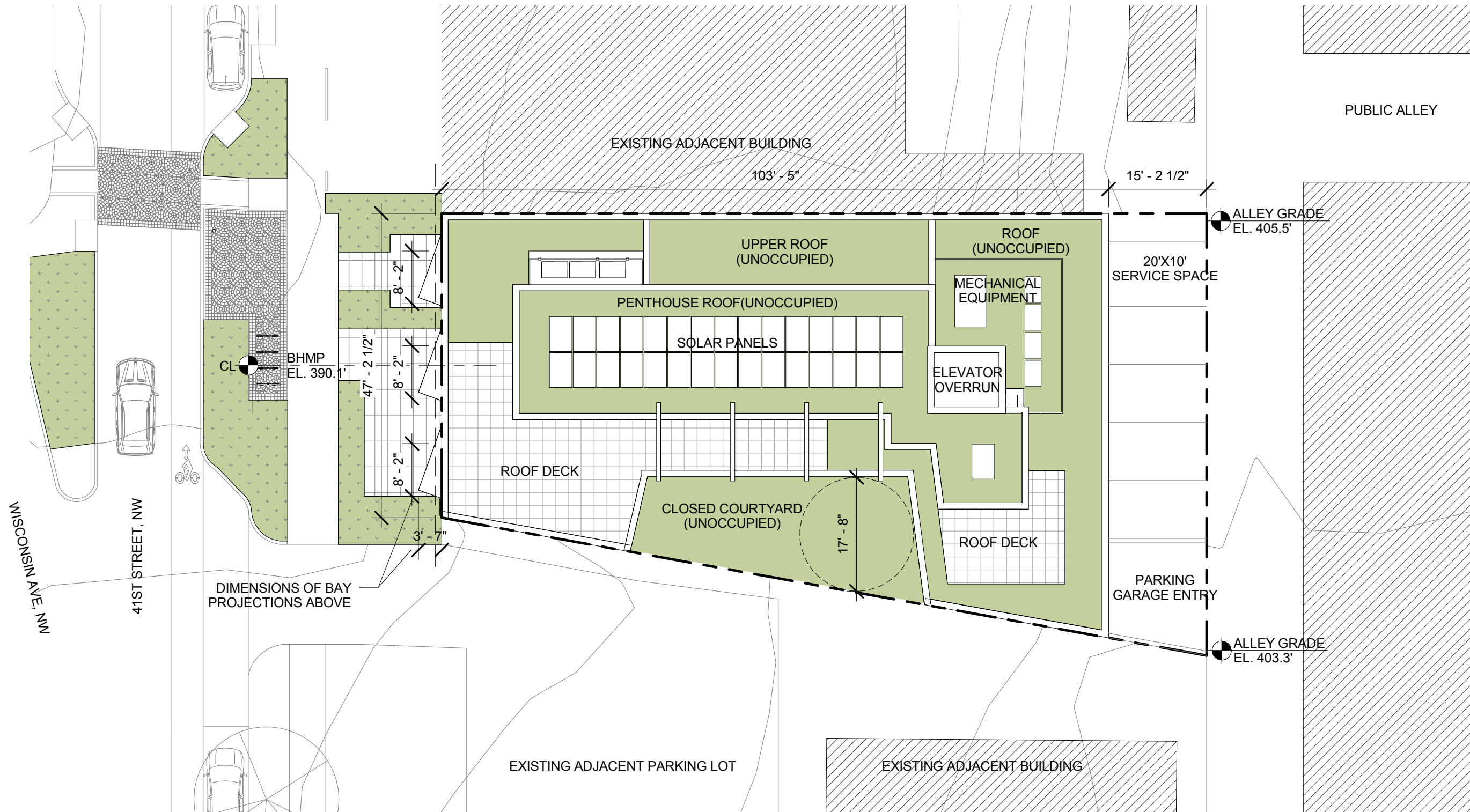
REVISIONS

1	ZC Public Hearing	10/29/18

DATE: 10/29/18  
 PROJECT NO: 2016-042  
 DRAWN BY: AG  
 CHECKED BY: JM/GB

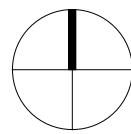
**Bonstra Haresign**  
 ARCHITECTS

CONTEXT MASSING



DIMENSIONS OF BAY PROJECTIONS ABOVE

**1 SITE PLAN**  
A1.0 1/16" = 1'-0"



FOR LANDSCAPING, PUBLIC SPACE AND ROOF DECK DESIGN SEE SHEETS L1.0 - L1.6

**Dancing Crab Properties, LLC**  
1901 RIVER ROAD  
POTOMAC, MD 20854

**STRUCTURAL ENGINEER**  
STRUCTURA  
111 ROCKVILLE PIKE  
SUITE 950  
ROCKVILLE, MD 20850  
301-987-9234

**M/E/P ENGINEER**  
CAPITOL ENGINEERING GROUP  
1825 K STREET NW  
SUITE 375  
WASHINGTON, DC 20006  
202-216-0039

**Tenleytown Apartments**  
4811 46th St NW  
Washington, DC 20016

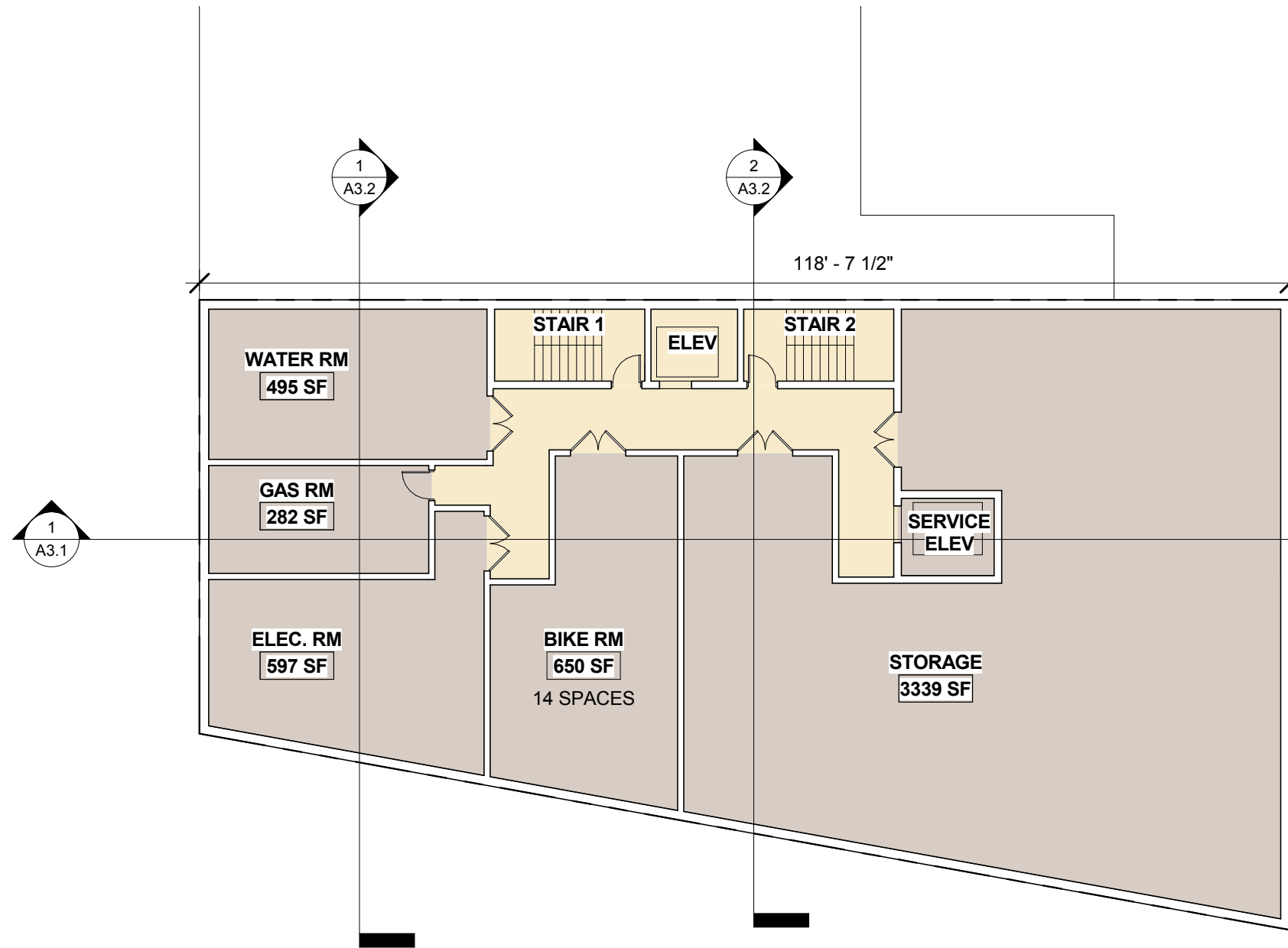
REVISIONS

1	ZC Public Hearing	10/29/18
---	-------------------	----------

DATE: 10/29/18  
PROJECT NO: 2018-042  
DRAWN BY: AG  
CHECKED BY: JMB

**Bonstra Haresign**  
ARCHITECTS

ARCHITECTURAL SITE PLAN



1  
A1.1  
**CELLAR FLOOR PLAN**  
1/16" = 1'-0"

- RESTAURANT
- RESIDENTIAL
- CIRCULATION
- SERVICE / UTILITY
- VEGETATION

NOTE: ALL SF SHOWN ON PLANS ARE NET SF.

**Bonstra Haresign**  
ARCHITECTS

**CLIENT**  
Dancing Crab Properties, LLC  
1901 RIVER ROAD  
POTOMAC, MD 20854

**STRUCTURAL ENG**  
STRUCTURA  
111 ROCKVILLE PIKE  
SUITE 950  
ROCKVILLE, MD 20850  
301-987-9234

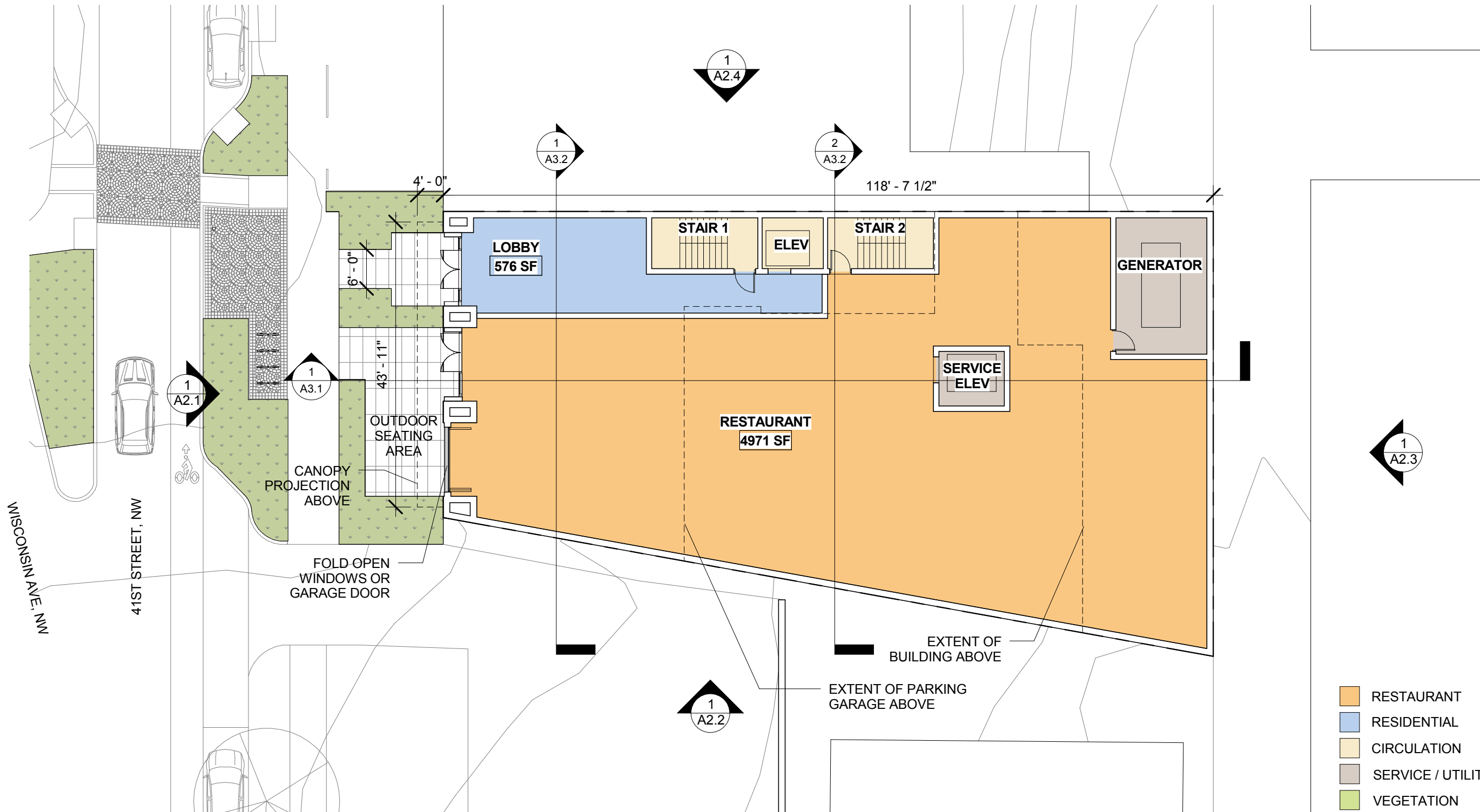
**M/E/P ENGINEER**  
CAPITOL ENGINEERING GROUP  
1825 K STREET NW  
SUITE 375  
WASHINGTON, DC 20006  
202-216-0039

**Tenleytown Apartments**  
4611 46th St NW  
Washington, DC 20016

**REVISIONS**

1	ZC Public Hearing	10/29/18
---	-------------------	----------


DATE: 10/29/18  
PROJECT NO: 2016-042  
DRAWN BY: AG  
CHECKED BY: JMB



1  
A1.2  
**GROUND FLOOR PLAN**  
1/16" = 1'-0"

FOR LANDSCAPING, PUBLIC SPACE AND ROOF DECK DESIGN SEE SHEETS L1.0 - L1.6

- RESTAURANT
- RESIDENTIAL
- CIRCULATION
- SERVICE / UTILITY
- VEGETATION

NOTE: ALL SF SHOWN ON PLANS ARE NET SF.

**Bonstra Haresign**  
ARCHITECTS

CLIENT  
**Dancing Crab Properties, LLC**  
1901 RIVER ROAD  
POTOMAC, MD 20854

STRUCTURAL ENG  
STRUCTURA  
111 ROCKVILLE PIKE  
SUITE 950  
ROCKVILLE, MD 20850  
301-987-9234

MEP ENGINEER  
CAPITOL ENGINEERING GROUP  
1825 K STREET NW  
SUITE 375  
WASHINGTON, DC 20006  
202-216-0039

**Tenleytown Apartments**  
4611 46th St NW  
Washington, DC 20016

REVISIONS

1	ZC Public Hearing	10/29/18
---	-------------------	----------

DATE: 10/29/18  
PROJECT NO: 2016-042  
DRAWN BY: AG  
CHECKED BY: JMB

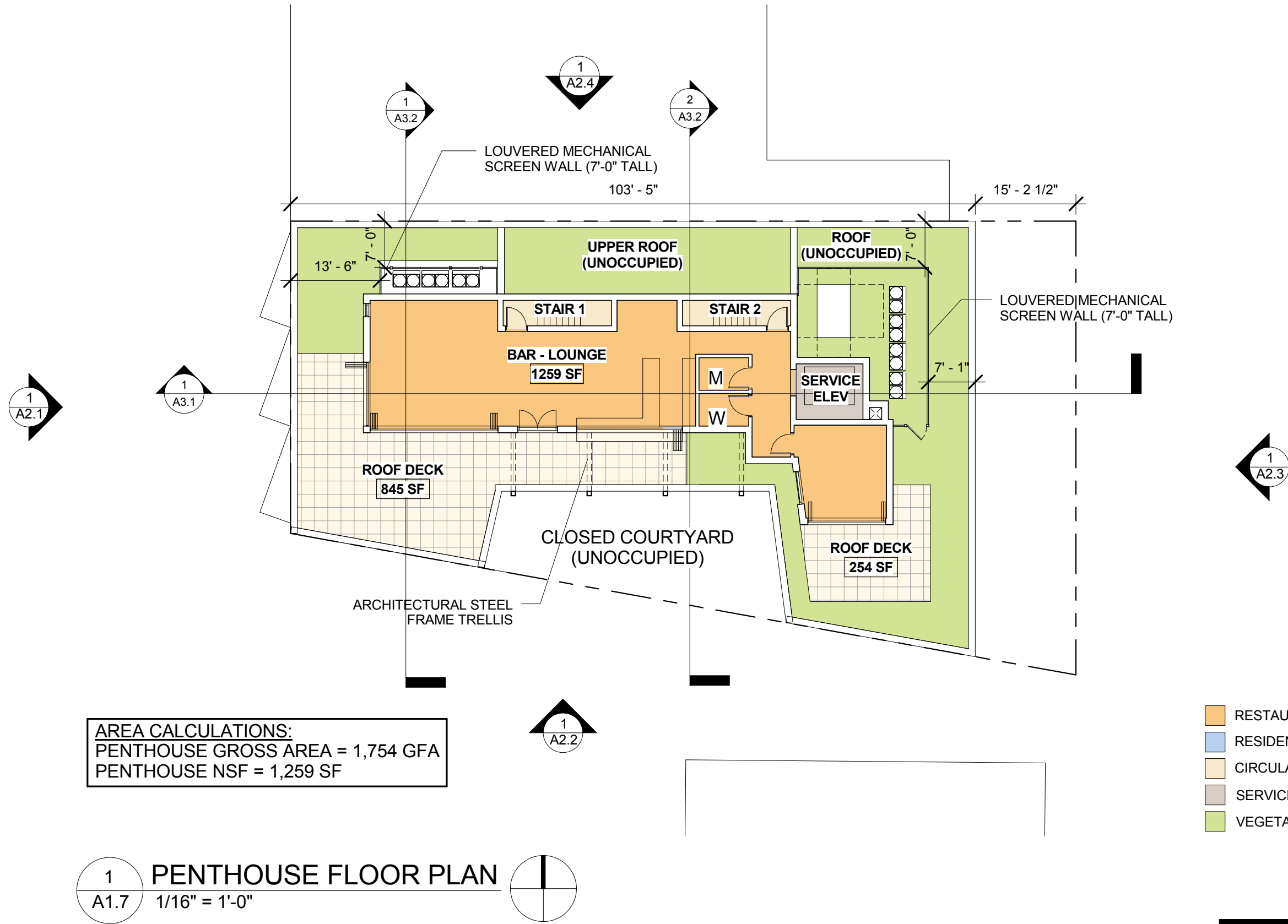












NOTE: ALL SF SHOWN ON PLANS ARE NET SF.

**Bonstra Haresign**  
 ARCHITECTS

PENTHOUSE FLOOR PLAN

**CLIENT**  
 Dancing Crab Properties, LLC  
 1801 RIVER ROAD  
 POTOMAC, MD 20854

**STRUCTURAL ENGINEER**  
 STRUCTURA  
 111 ROCKVILLE PIKE  
 SUITE 950  
 ROCKVILLE, MD 20850  
 301-987-9234

**MEP ENGINEER**  
 CAPITOL ENGINEERING GROUP  
 1825 K STREET NW  
 SUITE 375  
 WASHINGTON, DC 20006  
 202-216-0039

**Tenleytown Apartments**  
 4811 46th St NW  
 Washington, DC 20016

**REVISIONS**

1	ZC Public Hearing	10/29/18

DATE: 10/29/18  
 PROJECT NO: 2016-042  
 DRAWN BY: AG  
 CHECKED BY: JMB





ALUMINUM - CLEAR ANODIZED



ARCHITECTURAL CAST STONE



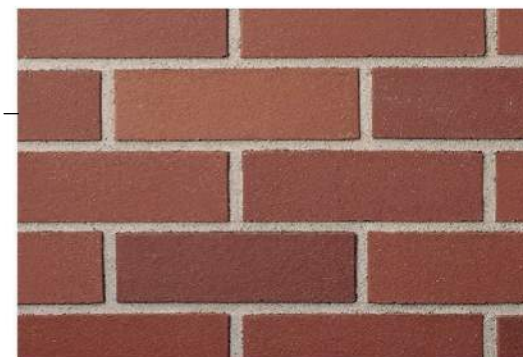
LIMESTONE - HONED



GRANITE - FLAMED



FIBER CEMENT



RED BRICK



LINEAR LIGHT FIXTURE



APPROXIMATE LOCATION OF FRONT LIT BUILDING AND RETAIL SIGNAGE.

Dancing Crab Properties, LLC  
1801 RIVER ROAD  
POTOMAC, MD 20854

STRUCTURA  
111 ROCKVILLE PIKE  
SUITE 950  
ROCKVILLE, MD 20850  
301-987-9234

CAPITOL ENGINEERING GROUP  
1825 K STREET NW  
SUITE 375  
WASHINGTON, DC 20006  
202-216-0039

Tenleytown Apartments  
4811 46th St NW  
Washington, DC 20016

REVISIONS	DATE
1 ZC Public Hearing	10/29/18

DATE:	10/29/18
PROJECT NO.:	2016-042
DRAWN BY:	AG
CHECKED BY:	JMBB

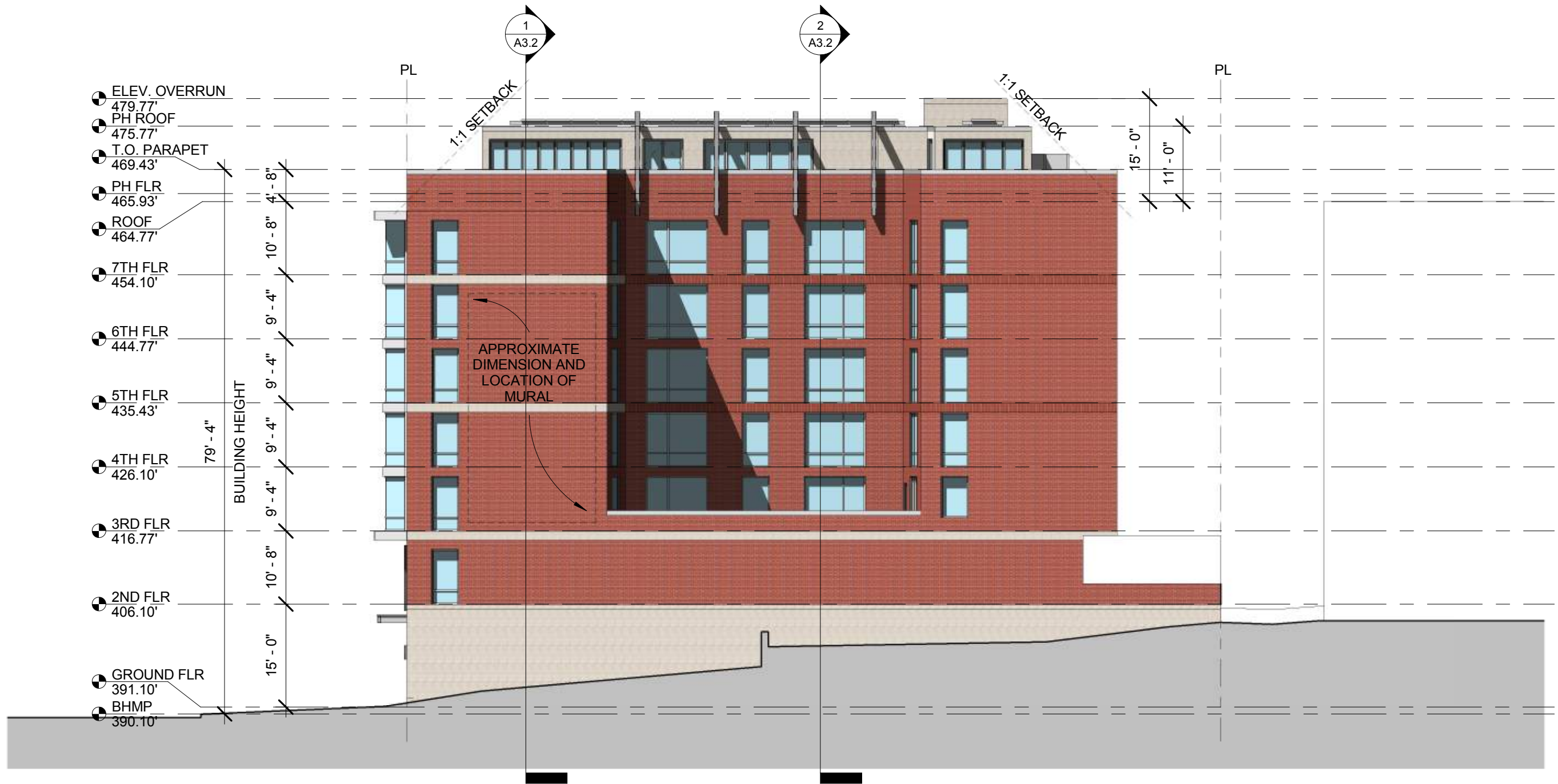
Bonstra Haresign  
ARCHITECTS

FACADE MATERIALS

1728 Fourteenth Street, NW, Suite 300  
Washington, DC 20009-4309

www.bonstra.com 202 588 9373 T

A4.1



1 SOUTH ELEVATION  
 A2.2 1/16" = 1'-0"

**Dancing Crab Properties, LLC**  
 1301 RIVER ROAD  
 POTOMAC, MD 20854

**STRUCTURA**  
 111 ROCKVILLE PIKE  
 SUITE 950  
 ROCKVILLE, MD 20850  
 301-987-9234

**CAPITOL ENGINEERING GROUP**  
 1825 K STREET NW  
 SUITE 375  
 WASHINGTON, DC 20006  
 202-216-0039

**Tenleytown Apartments**  
 4611 46th St NW  
 Washington, DC 20016

REVISIONS

1	ZC Public Hearing	10/29/18
---	-------------------	----------

DATE: 10/29/18  
 PROJECT NO: 2016-042  
 DRAWN BY: AG  
 CHECKED BY: JM/GB

**Bonstra Haresign**  
 ARCHITECTS

SOUTH EXTERIOR ELEVATION