







VIEW LOOKING NORTHEAST

CLIENT  
**Dancing Crab Properties, LLC**  
 1301 RIVER ROAD  
 POTOMAC, MD 20854

STRUCTURAL ENG  
**STRUCTURA**  
 111 ROCKVILLE PIKE  
 SUITE 950  
 ROCKVILLE, MD 20850  
 301-987-9234

MEP ENGINEER  
**CAPITOL ENGINEERING GROUP**  
 1825 K STREET NW  
 SUITE 375  
 WASHINGTON, DC 20006  
 202-216-0039

ARCHITECT  
**BONSTRA HARESIGN ARCHITECTS**  
 1728 FOURTEENTH STREET, NW, SUITE 300  
 WASHINGTON, DC 20009-4309  
 WWW.BONSTRA.COM 202 588 9373 T

PROJECT NAME  
**Tenleytown Apartments**  
 4611 46th St, NW  
 Washington, DC 20016

REVISIONS  
 1 Pre-hearing Submission 06/27/18

NO.	DESCRIPTION	DATE

DATE: 06/27/18  
 PROJECT NO: 2016-042  
 DRAWN BY:  
 CHECKED BY: AG/JMB

**Bonstra Haresign**  
 ARCHITECTS

3D VIEW - FACING NORTHEAST

1728 Fourteenth Street, NW, Suite 300  
 Washington, DC 20009-4309

www.bonstra.com 202 588 9373 T

**A5.1**





ENTRY/OUTDOOR SEATING AREA: VIEW FROM SIDEWALK

CLIENT  
**Dancing Crab Properties, LLC**  
 1301 RIVER ROAD  
 POTOMAC, MD 20854

STRUCTURAL ENG  
**STRUCTURA**  
 111 ROCKVILLE PIKE  
 SUITE 950  
 ROCKVILLE, MD 20850  
 301-987-9234

MEP ENGINEER  
**CAPITOL ENGINEERING GROUP**  
 1825 K STREET NW  
 SUITE 375  
 WASHINGTON, DC 20006  
 202-216-0039

**Tenleytown Apartments**  
 4611 46th St NW  
 Washington, DC 20016

REVISIONS  
 1 Pre-hearing Submission 06/27/18


DATE: 06/27/18  
 PROJECT NO: 2016-042  
 DRAWN BY:  
 CHECKED BY: AG/JMBB

**Bonstra Haresign**  
 ARCHITECTS

3D VIEW - PUBLIC SPACE

1728 Fourteenth Street, NW, Suite 300  
 Washington, DC 20009-4309

www.bonstra.com 202 588 9373 T

**A5.2**





AERIAL VIEW

CLIENT  
**Dancing Crab Properties, LLC**  
 1301 RIVER ROAD  
 POTOMAC, MD 20854

STRUCTURAL ENG  
**STRUCTURA**  
 111 ROCKVILLE PIKE  
 SUITE 950  
 ROCKVILLE, MD 20850  
 301-987-9234

MEP ENGINEER  
**CAPITOL ENGINEERING GROUP**  
 1825 K STREET NW  
 SUITE 375  
 WASHINGTON, DC 20006  
 202-216-0039

**Tenleytown Apartments**  
 4611 46<sup>th</sup> St NW  
 Washington, DC 20016

REVISIONS

1	Pre-hearing Submission	06/27/18

DATE: 06/27/18  
 PROJECT NO: 2016-042  
 DRAWN BY:  
 CHECKED BY: AG/JMB

**Bonstra Harsign**  
 ARCHITECTS

3D VIEW - ROOFTOP AERIAL

1728 Fourteenth Street, NW, Suite 300  
 Washington, DC 20009-4309

www.bonstra.com 202 588 9373 T

**A5.3**





ROOFTOP TERRACE: VIEW LOOKING NORTHEAST

CLIENT  
**Dancing Crab Properties, LLC**  
 1801 RIVER ROAD  
 POTOMAC, MD 20854

STRUCTURAL ENG.  
**STRUCTURA**  
 111 ROCKVILLE PIKE  
 SUITE 950  
 ROCKVILLE, MD 20850  
 301-987-9234

M/E/P ENGINEER  
**CAPITOL ENGINEERING GROUP**  
 1825 K STREET NW  
 SUITE 375  
 WASHINGTON, DC 20006  
 202-216-0039

**Tenleytown Apartments**  
 411-4615 1st Street, NW  
 Washington, DC 20016

REVISIONS		
1	Pre-hearing Submission	06/27/18

DATE: 06/27/18  
 PROJECT NO: 2016-042  
 DRAWN BY:  
 CHECKED BY: AG/JM/BB

**Bonstra Haresign**  
 ARCHITECTS

3D VIEW - ROOFTOP TERRACE

1728 Fourteenth Street, NW, Suite 300  
 Washington, DC 20009-4309

www.bonstra.com 202 588 9373 T

A5.4





EXTENSIVE GREEN ROOF



MOVEABLE GLOBE LIGHTS



INTENSIVE GREEN ROOF



OVERHEAD TRELLIS FEATURE

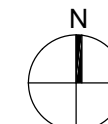


LOUNGE CHAIRS

MURAL(S) ON BUILDING SIDE



SOFA SEATING, TYP.  
LINEAR BURNER  
WOOD TILE PAVING  
4'-8\"/>



WOOD TILE PAVING



LINEAR BURNER



SOFA SEATING

CLIENT  
**DANCING CRAB PROPERTIES, LLC**  
1801 RIVER ROAD  
POTOMAC, MD 20854

STRUCTURAL ENG.  
STRUCTURA  
111 ROCKVILLE PIKE  
SUITE 950  
ROCKVILLE, MD 20850  
301-987-9234

MEP ENGINEER  
CAPITOL ENGINEERING GROUP  
1825 K STREET NW  
SUITE 375  
WASHINGTON, DC 20006  
202-216-0039

LANDSCAPE ARCH.  
BRADLEY SITE DESIGN  
1010 WISCONSIN AVE NW  
SUITE 208  
WASHINGTON, DC 20007  
202-695-8066

PROJECT  
**TENLEYTOWN APARTMENTS**  
4611 14616 1ST STREET, NW  
WASHINGTON, DC 20016

REVISIONS  
1 Pre-hearing Submission 06/27/18

DATE: 06/27/18  
PROJECT NO: 2018-042  
DRAWN BY:  
CHECKED BY:

**Bonstra Haresign**  
ARCHITECTS

LANDSCAPE ROOF  
PLAN

1728 Fourteenth Street, NW, Suite 300  
Washington, DC 20009-4309

www.bonstra.com | 202 588 9373 T

L1.2