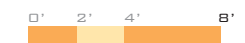
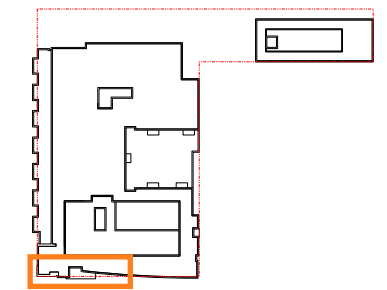


NOTES:

1. Flexibility is requested to vary the final color selection of exterior materials within the ranges proposed, based on availability at the time of construction without reducing the quality of materials.
2. Flexibility is requested to make minor refinements to exterior details and dimensions, including belt courses, sills, bases, cornices, railings and trim, or any other changes to comply with the building codes or that are otherwise necessary to obtain a final building permit.
3. For material images refer to page 3.16



THE BARD REDEVELOPMENT

FACADE TYPE A

Southwest Washington, D.C.

March 8, 2019 sba project# 14105 © 2019 Shalom Baranes Associates

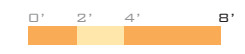
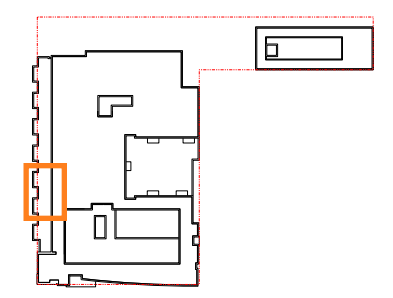
shalom baranes associates architects

ZONING COMMISSION
 PUD SUBMISSION 3.17
 CASE NO.17-21
 EXHIBIT NO.39E6



NOTES:

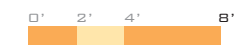
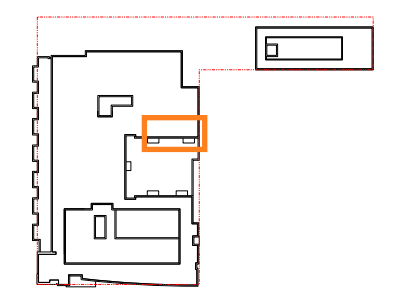
1. Flexibility is requested to vary the final color selection of exterior materials within the ranges proposed, based on availability at the time of construction without reducing the quality of materials.
2. Flexibility is requested to make minor refinements to exterior details and dimensions, including belt courses, sills, bases, cornices, railings and trim, or any other changes to comply with the building codes or that are otherwise necessary to obtain a final building permit.
3. For material images refer to page 3.16

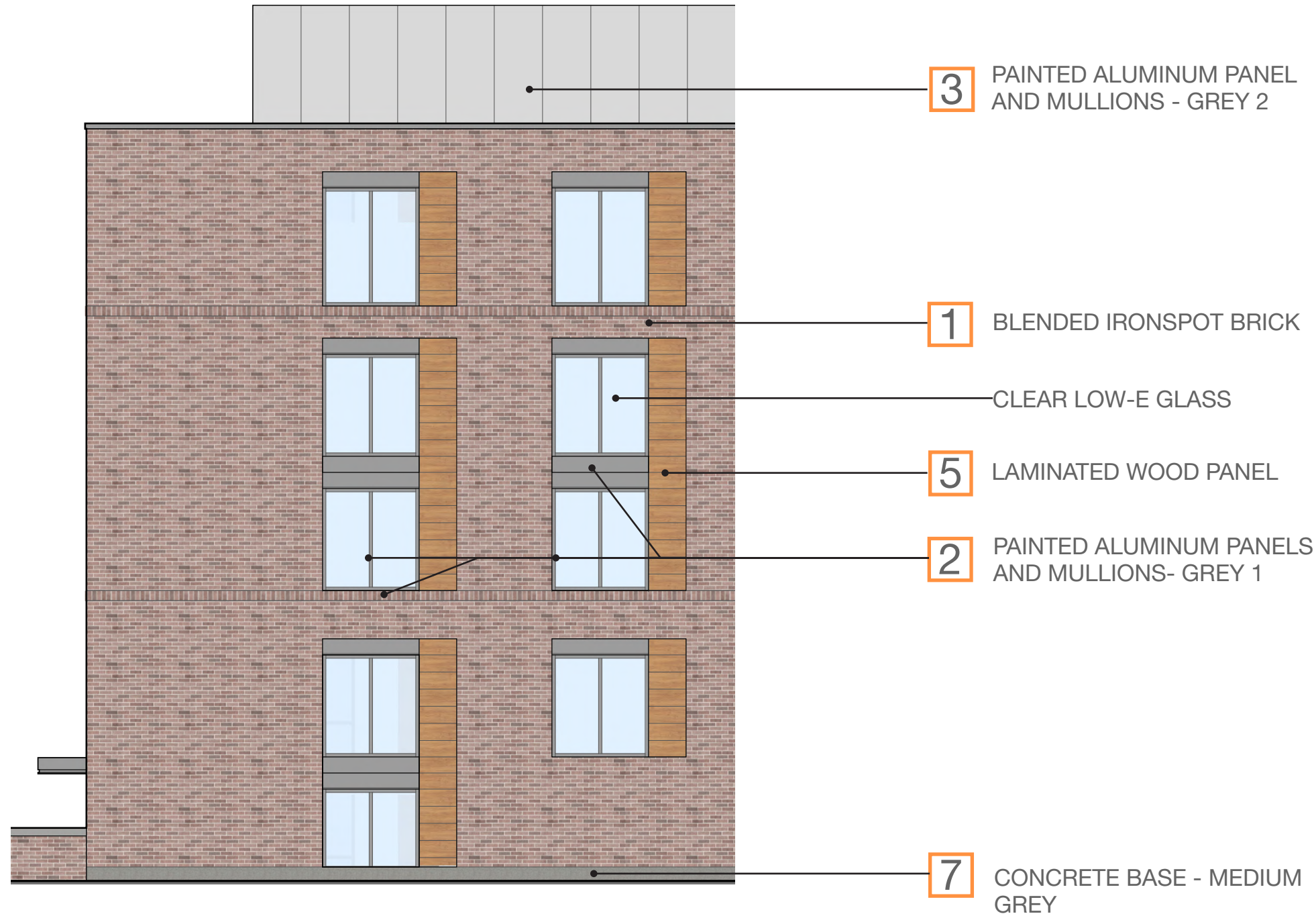




NOTES:

1. Flexibility is requested to vary the final color selection of exterior materials within the ranges proposed, based on availability at the time of construction without reducing the quality of materials.
2. Flexibility is requested to make minor refinements to exterior details and dimensions, including belt courses, sills, bases, cornices, railings and trim, or any other changes to comply with the building codes or that are otherwise necessary to obtain a final building permit.
3. For material images refer to page 3.16



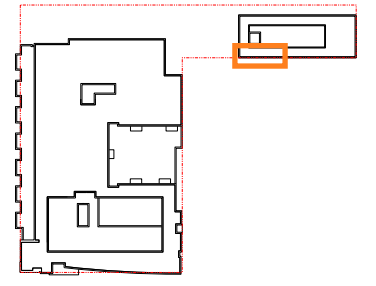


NOTES:

1. Flexibility is requested to vary the final color selection of exterior materials within the ranges proposed, based on availability at the time of construction without reducing the quality of materials.

2. Flexibility is requested to make minor refinements to exterior details and dimensions, including belt courses, sills, bases, cornices, railings and trim, or any other changes to comply with the building codes or that are otherwise necessary to obtain a final building permit.

3. For material images refer to page 3.16





NOTES:

1. Flexibility is requested to vary the final color selection of exterior materials within the ranges proposed, based on availability at the time of construction without reducing the quality of materials.

2. Flexibility is requested to make minor refinements to exterior details and dimensions, including belt courses, sills, bases, cornices, railings and trim, or any other changes to comply with the building codes or that are otherwise necessary to obtain a final building permit.

3. For material images refer to page 3.16

