



THE BARD REDEVELOPMENT

AERIAL VIEW FROM NW

shalom baranes associates architects

Southwest Washington, D.C.

April 2, 2019

sba project# 14105 © 2018 Shalom Baranes Associates

ZONING COMMISSION  
DRIVEWAY STUDY  
CASE NO.17-21  
EXHIBIT NO.58B1



THE BARD REDEVELOPMENT

VIEW FROM 6TH STREET LOOKING EAST

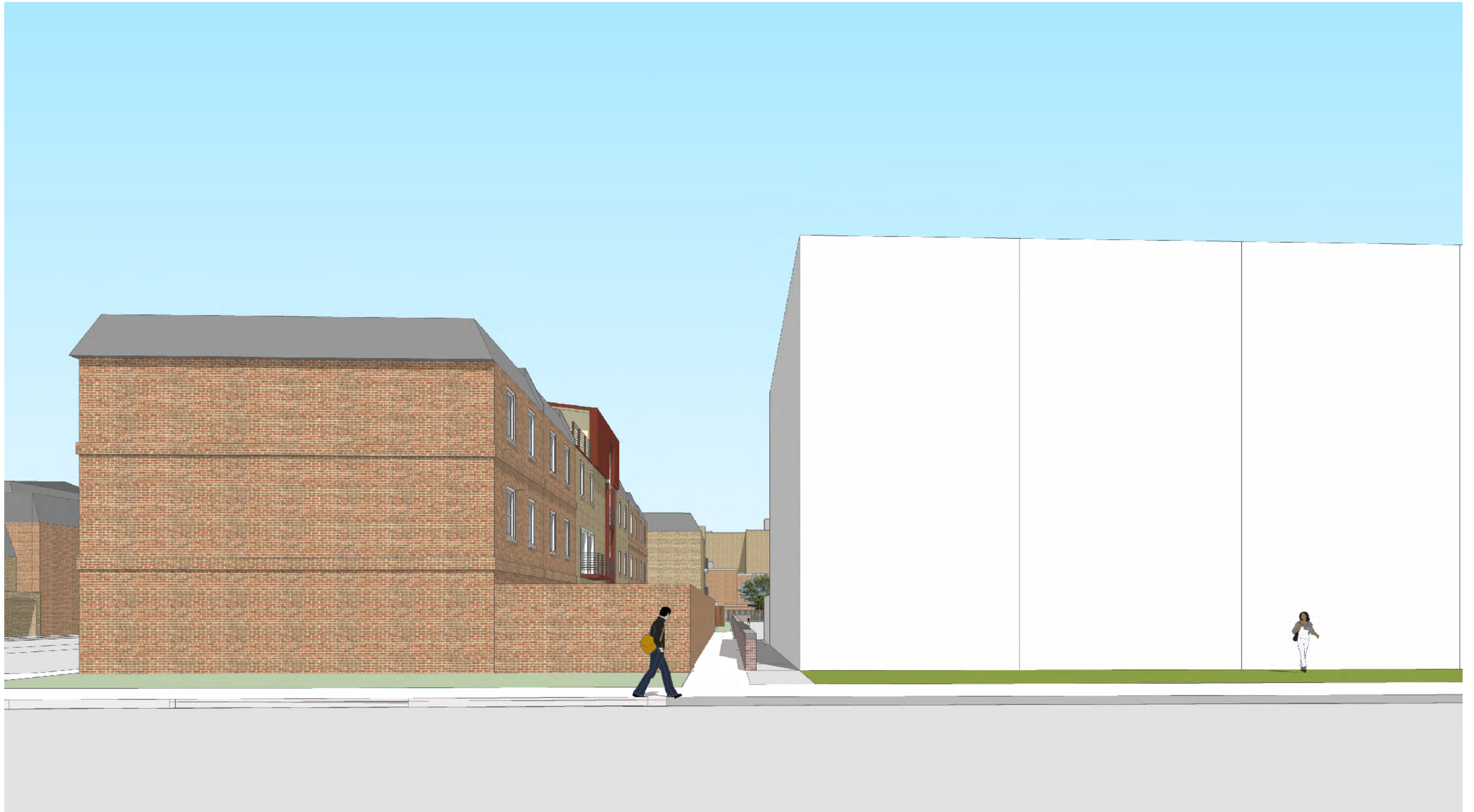
shalom baranes associates architects

Southwest Washington, D.C.

April 2, 2019

sba project# 14105 © 2018 Shalom Baranes Associates

DRIVEWAY STUDY



THE BARD REDEVELOPMENT

VIEW FROM 6TH STREET LOOKING EAST

shalom baranes associates architects

Southwest Washington, D.C.

April 2, 2019

sba project# 14105 © 2018 Shalom Baranes Associates

DRIVEWAY STUDY

