

River Point - 2100 2nd St, SW

Square 613 / Lot 10

Site Plan: Waterfront WEST 8

ZONING COMMISSION
 District of Columbia
 June 22, 2017
 CASE NO. 17-05
 EXHIBIT NO. 30A2

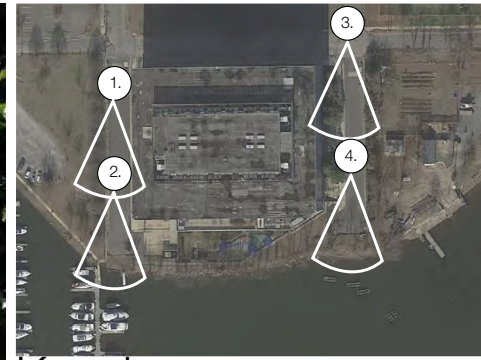
L13



1. View from mid-block down 2nd Street



2. View from V St and 2nd Street (mid-block)



Key plan



3. View down 1st Street from 1st/V



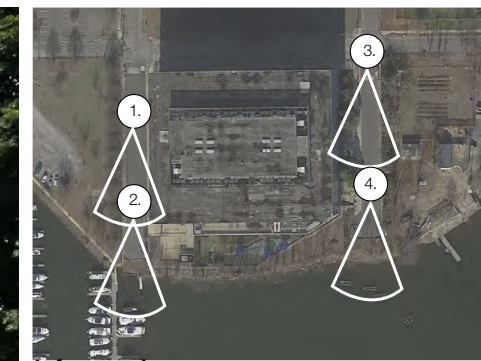
4. View at terminus of 1st Street



1. View from mid-block down 2nd Street



2. View from V St and 2nd Street (mid-block)



Key plan



3. View down 1st Street from 1stV



4. View at terminus of 1st Street

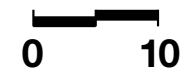
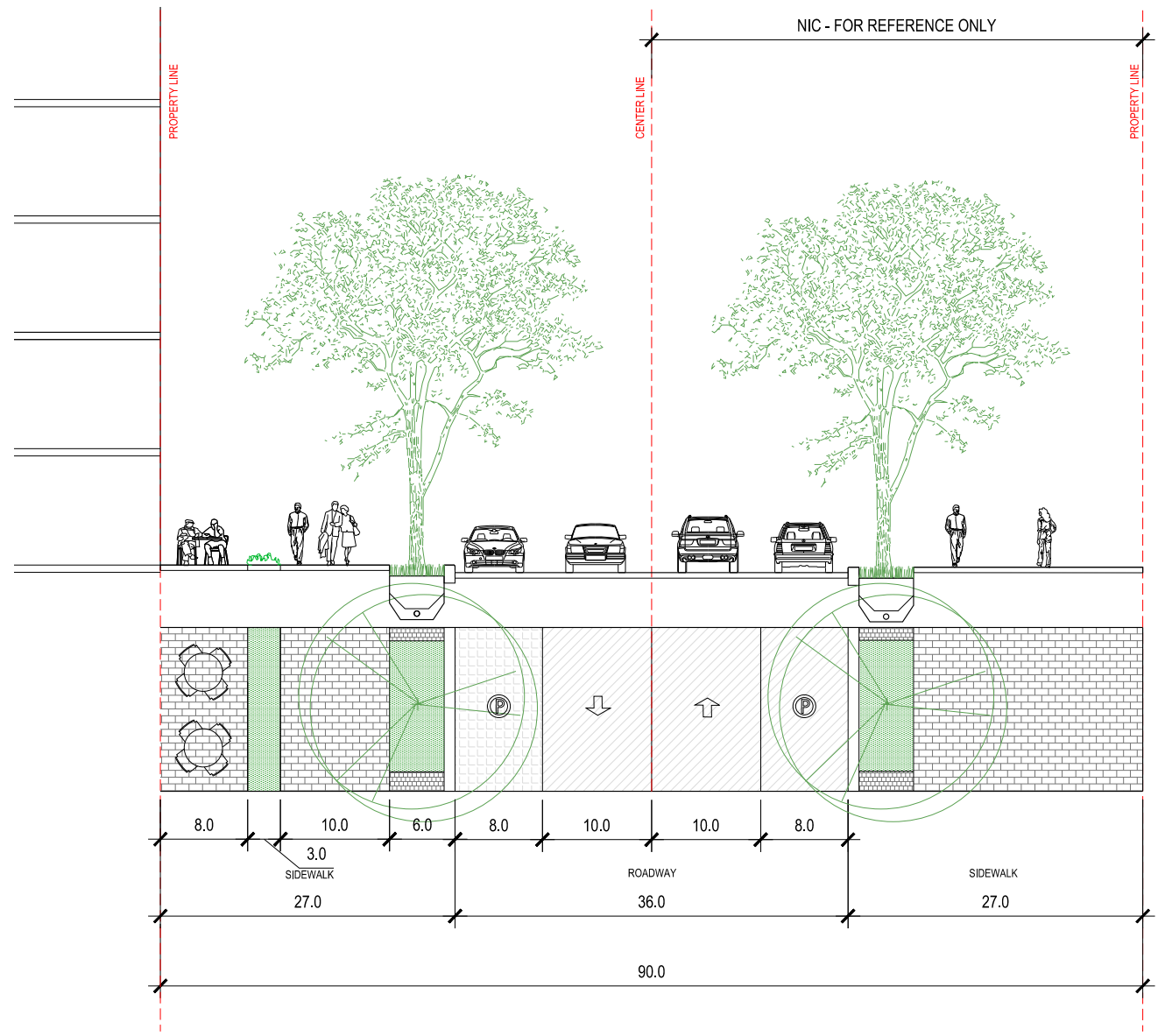
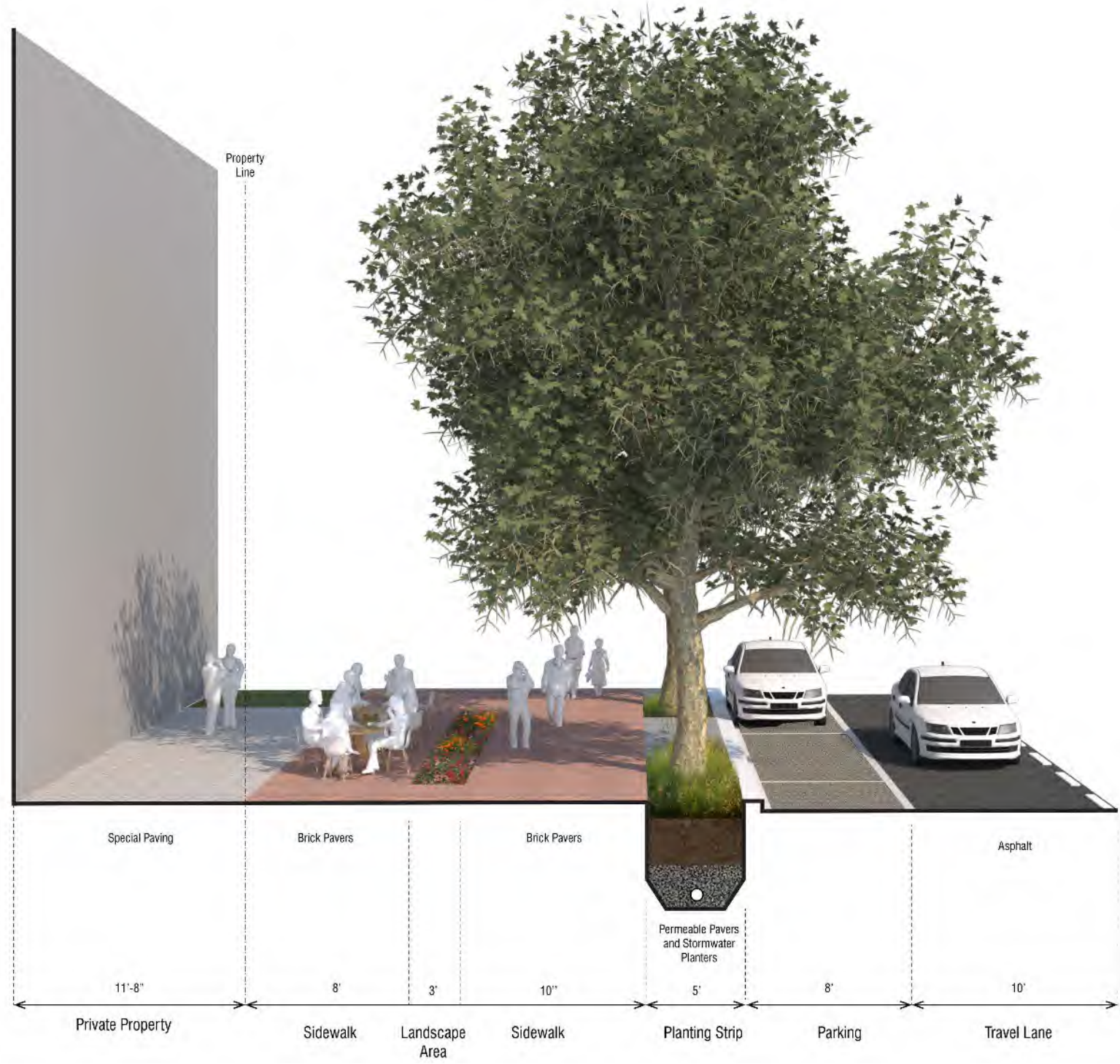
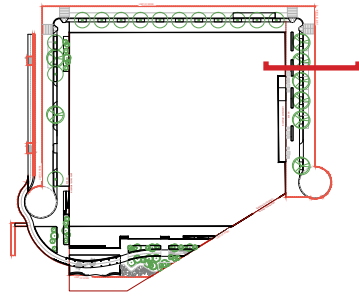
River Point - 2100 2nd St, SW

Square 613 / Lot 10

1st & 2nd Street Viewshed Analysis -Proposed

June 22, 2017

WEST 8
L17C



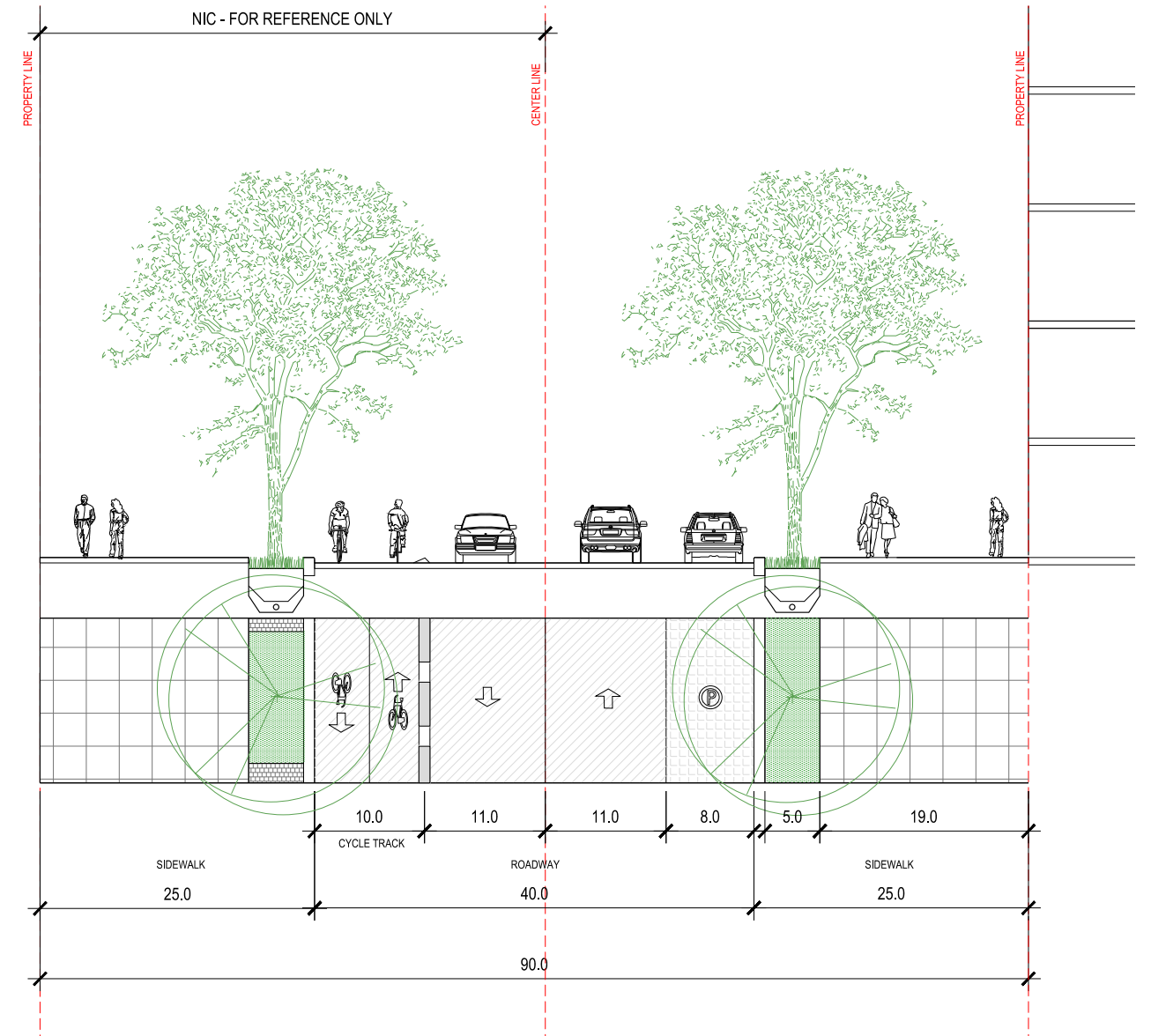
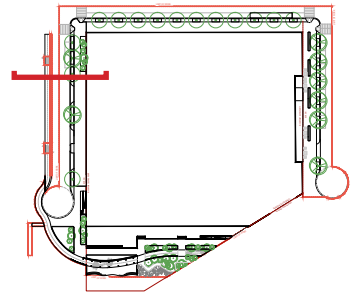
River Point - 2100 2nd St, SW

Square 613 / Lot 10

Site Sections: 1st Street

June 22, 2017

**WEST 8
L18**



River Point - 2100 2nd St, SW

Square 613 / Lot 10

Site Sections: 2nd Street

June 22, 2017

**WEST 8
L19**

Materials



brick paving



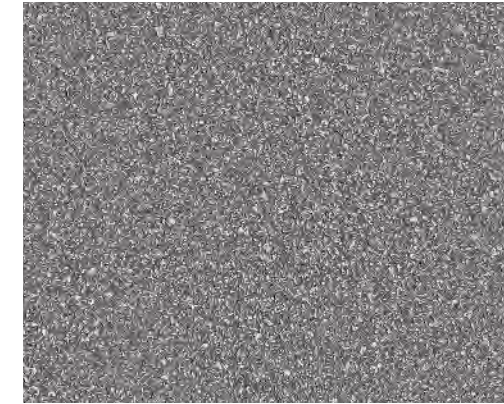
wood decking



permeable paving / vehicular permeable pavers



CIP concrete



asphalt

Furnishings



benches



lighting



bike racks

Wayfinding



Amenities



street trees



stormwater planters



seat edges



dining terraces

* Furnishings and Signage to comply with Riverwalk Design Guidelines

River Point - 2100 2nd St, SW

Square 613 / Lot 10

Materials and Amenities **WEST 8**

June 22, 2017

L24

Canopy Trees



Ulmus americana 'New Harmony'
(New Harmony Elm)



Platanus x acerifolia 'Morton Circle'
(Exclamation London Plane)



Ginkgo biloba 'Princeton Sentry'
(Ginkgo Princeton Sentry)

Shrubs, Groundcovers, Perennials



Achillea millefolium
(Common Yarrow)



Adiantum pedatum
(Northern Maidenhair Fern)



Eupatorium maculatum
(Joe Pye Weed)

Riparian Trees



Salix nigra (Black Willow)



Nyssa aquatica (Water Tupelo)



Taxodium distichum (Bald Cypress)

Emergent/Water's Edge



Juncus effusus
(Soft Rush)



Carex eburnea
(Bristle Leaf Sedge)



Iris virginica
(Great Blue Flag Iris)

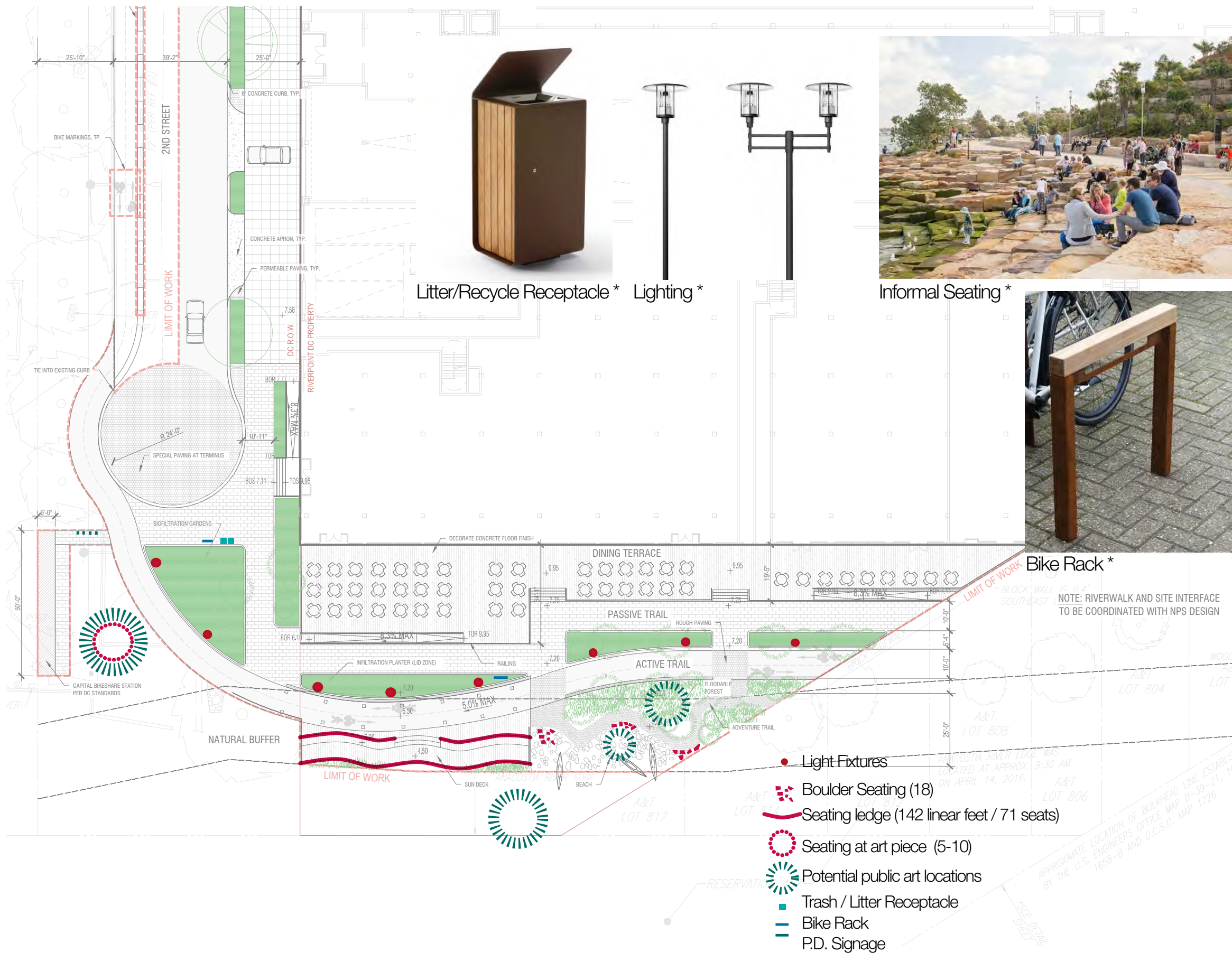
* Planting to comply with Riverwalk Design Guidelines

River Point - 2100 2nd St, SW

Square 613 / Lot 10

Conceptual Planting Palette | WEST 8

June 22, 2017 | L25



Litter/Recycle Receptacle *



Lighting *



Informal Seating *



Bike Rack *



Expressive Seating



Public art

River Point - 2100 2nd St, SW

Square 613 / Lot 10

Seating and Public Art at Waterfront

* - denotes elements to comply with Riverwalk Design Guidelines

June 22, 2017

**WEST 8
L25A**