

FIGURES

Columbian Quarter at Poplar Point



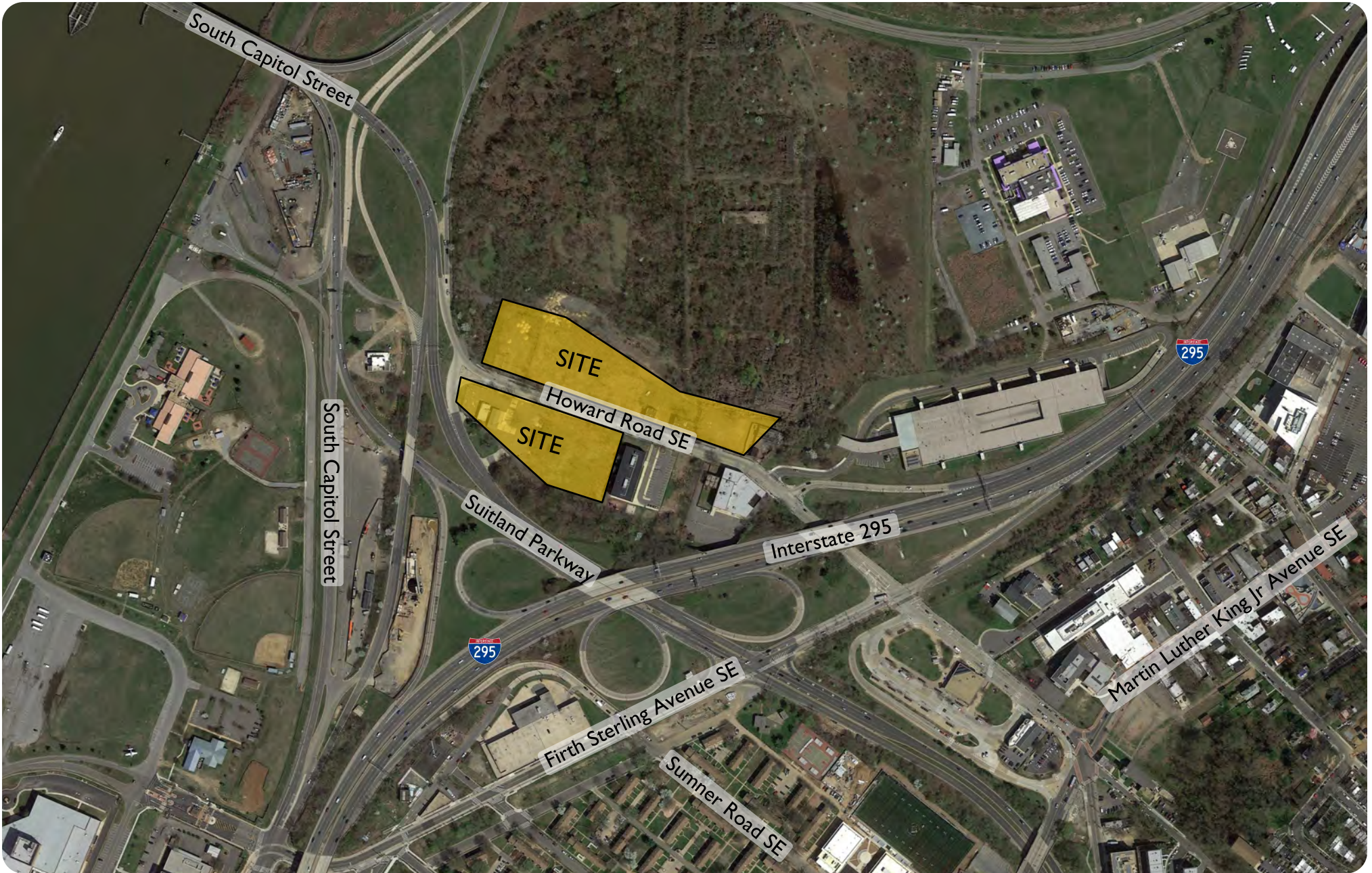


Figure 1
Site Location

Poplar Point
Washington, DC





Figure 2
Site Plan

Poplar Point
Washington, DC



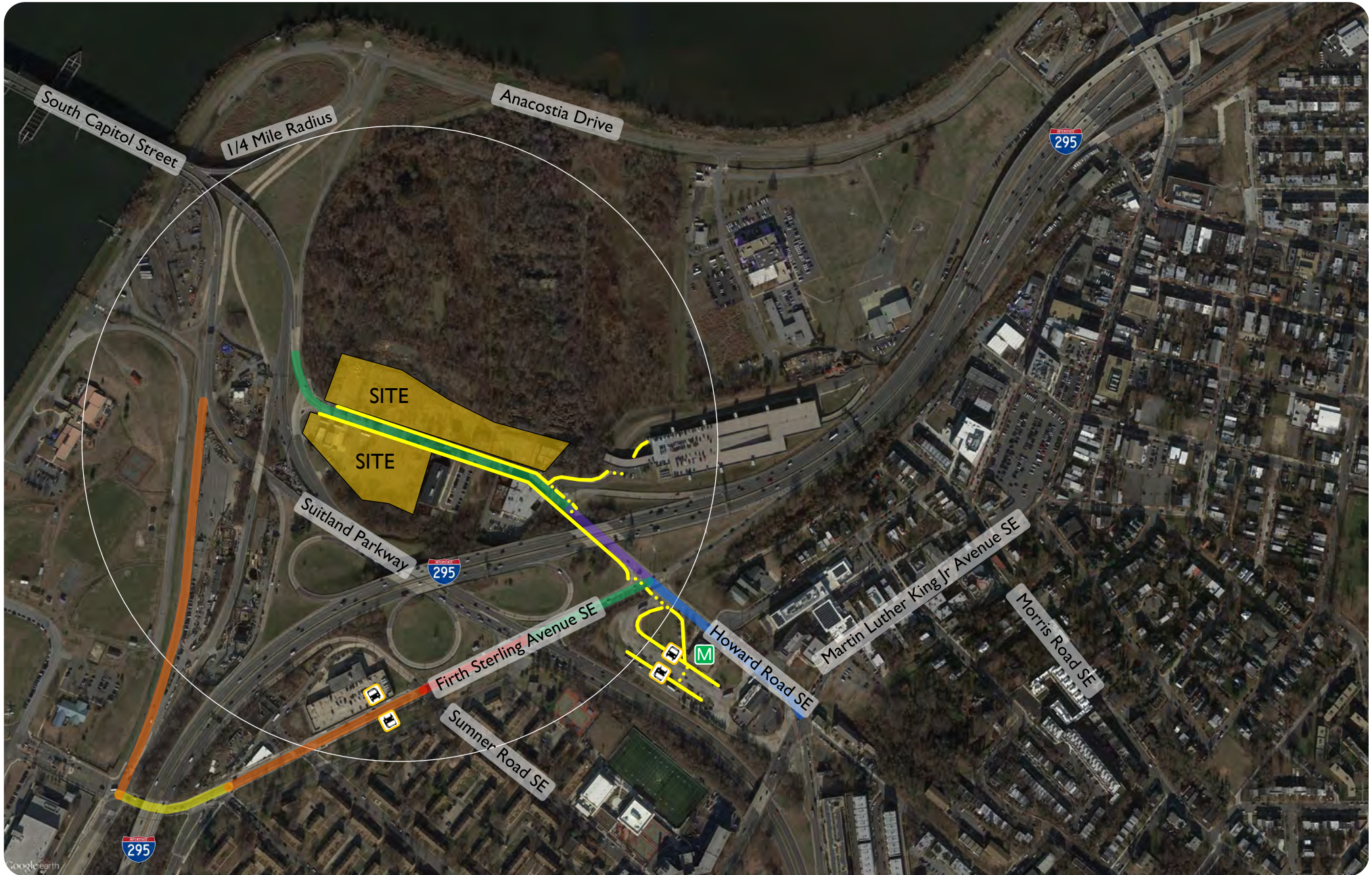


Figure 4
One Quarter Mile Walkshed

Poplar Point
Washington, DC

Anacostia Metro Station (Green Line)

Bus Stop

Likely Walking Routes to/from Bus Stops/Metrorail Stations

Sidewalk Crosswalk

High Pedestrian Activity and Deficiency

Medium Pedestrian Activity and Deficiency

Low Pedestrian Activity and Deficiency



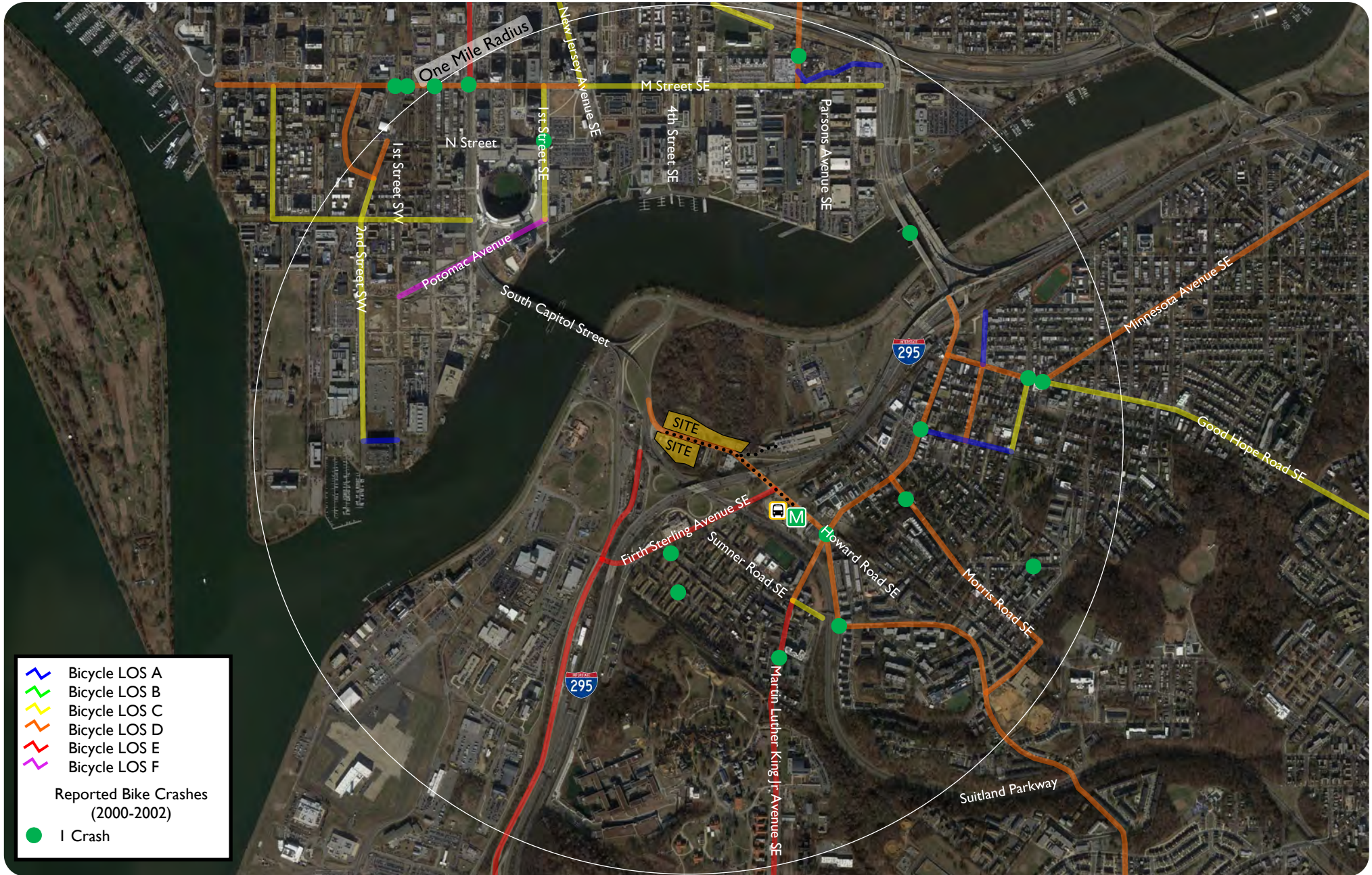


Figure 5
One Mile Bike Shed

Poplar Point
Washington, DC

- Anacostia Metro Station (Green Line)
- Bus Stop
- Likely Bike Routes to/from Transit Stops



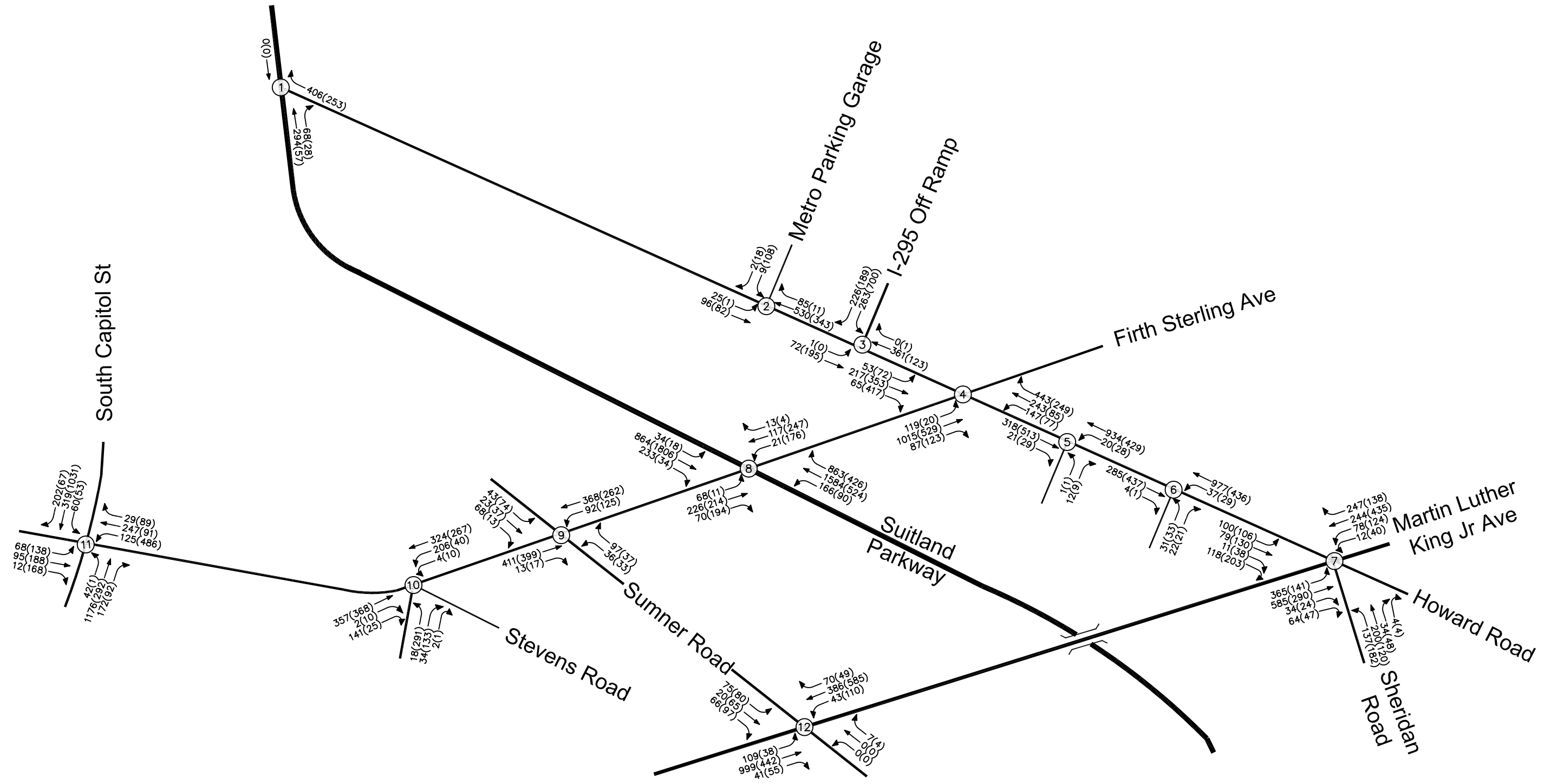


Figure 6
Existing Peak Hour Traffic Volumes

Poplar Point
Washington, DC

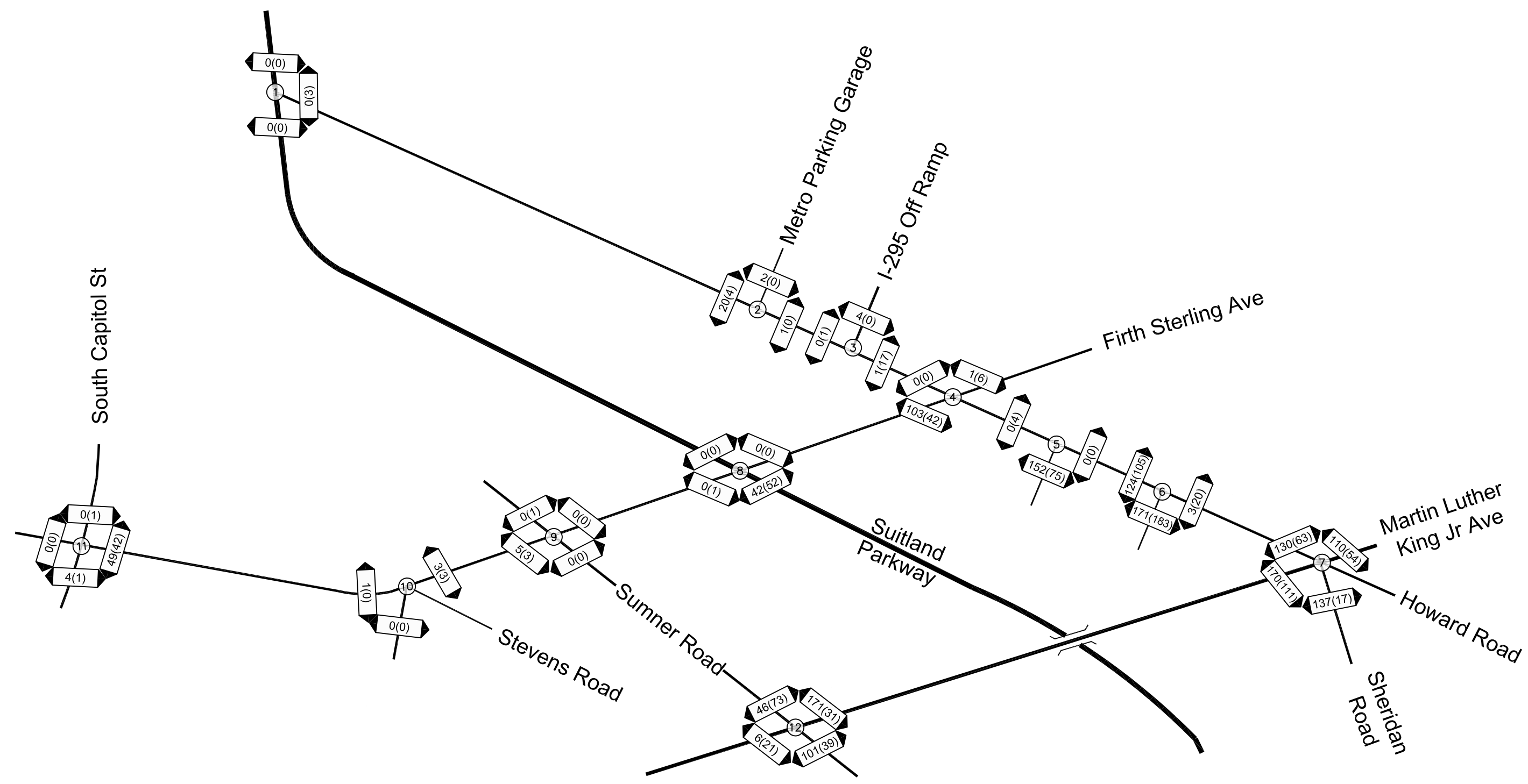


Figure 7
 Pedestrian Peak Hour Volumes
 Poplar Point
 Washington, DC

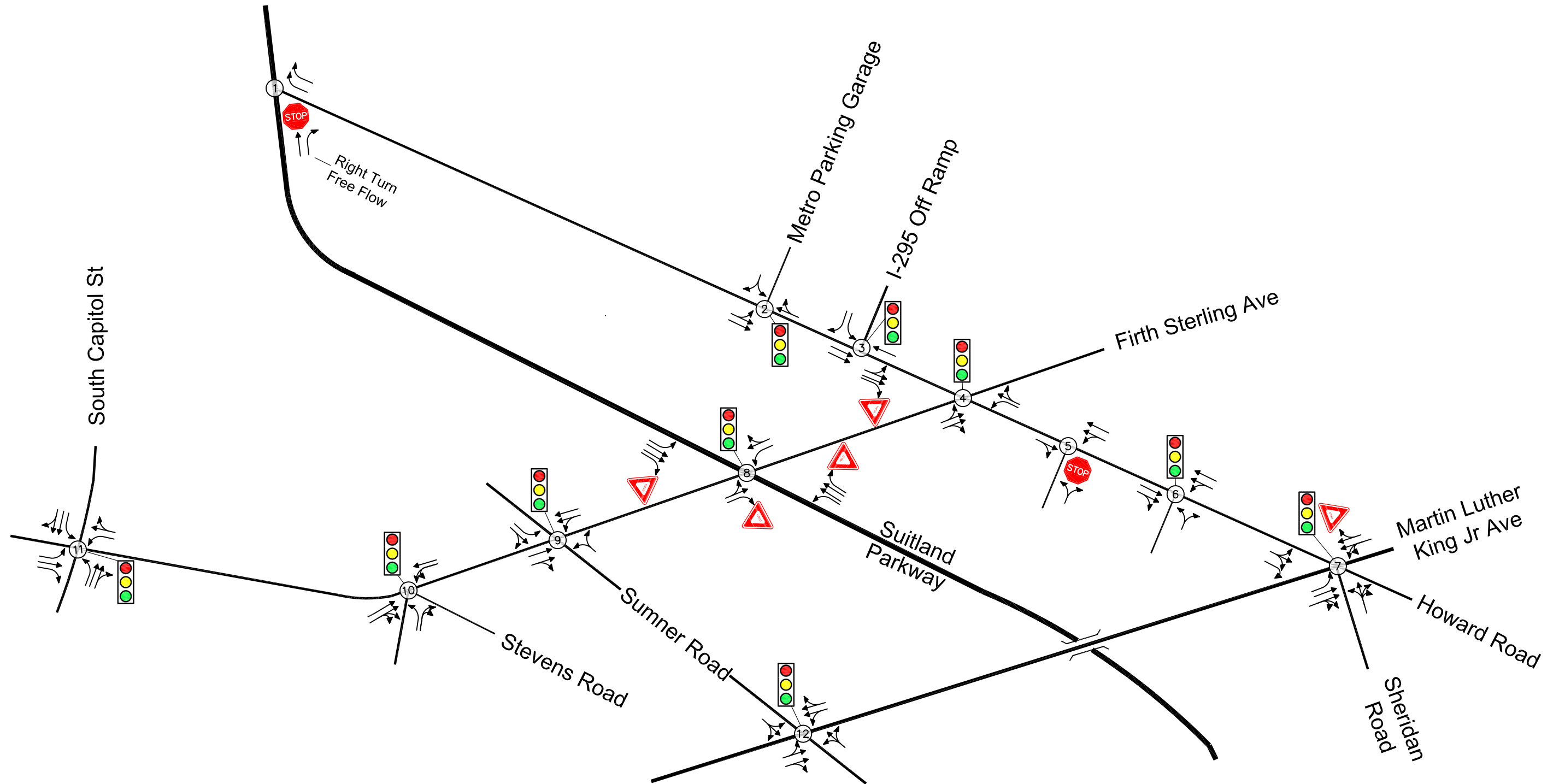


Figure 8
Existing Lane Use and Traffic Control

Poplar Point
Washington, DC

- ← Represents One Travel Lane
- 🚦 Signalized Intersection
- 🛑 Stop Sign
- 🚧 Yield Sign



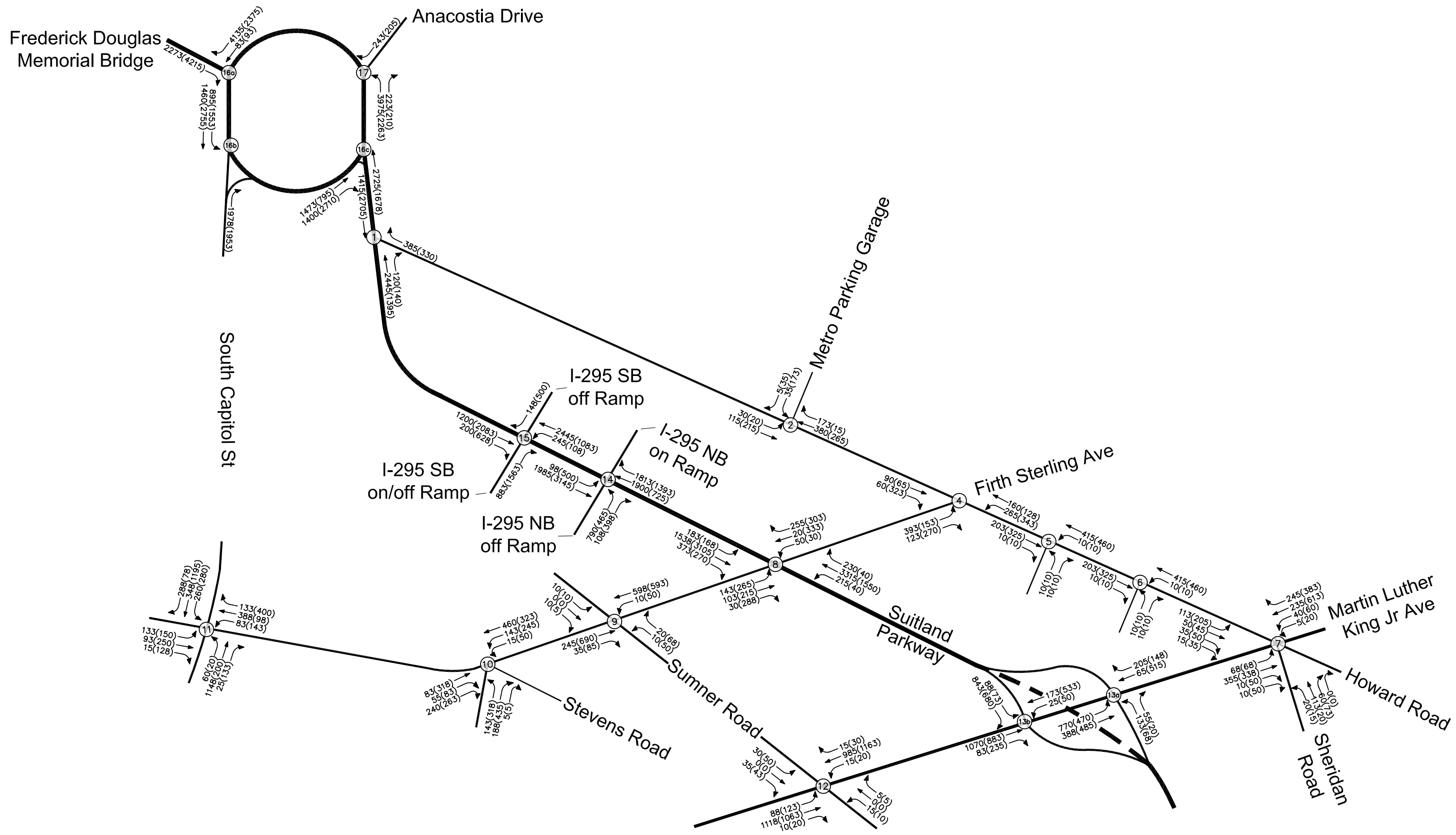


Figure 9
 2030 Total Future Traffic Volumes (Average of 2020 and 2040 Total Future Volumes from SCS Study)

Poplar Point
 Washington, DC

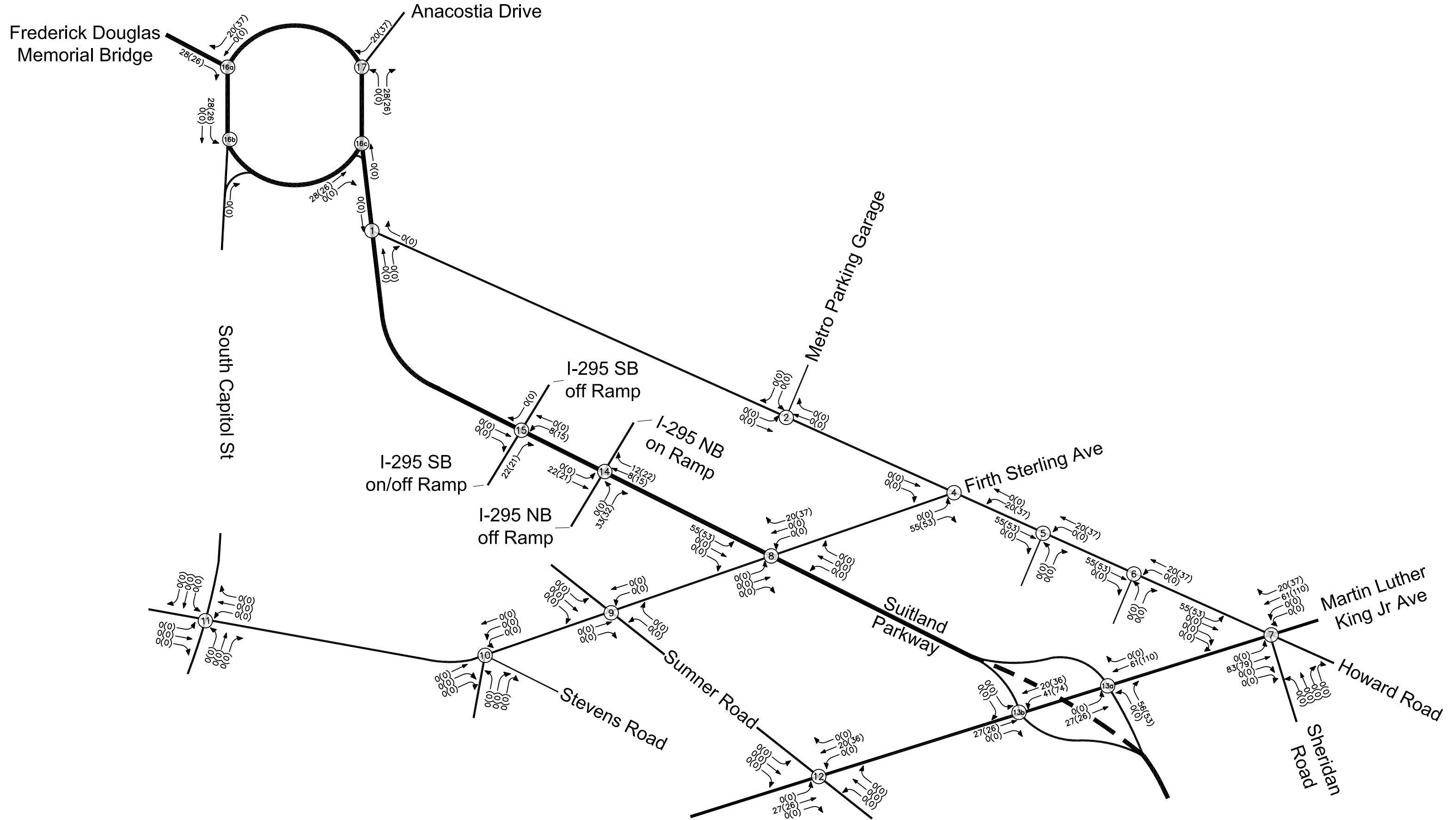


Figure 10
Pipeline Traffic Volumes

Poplar Point
Washington, DC

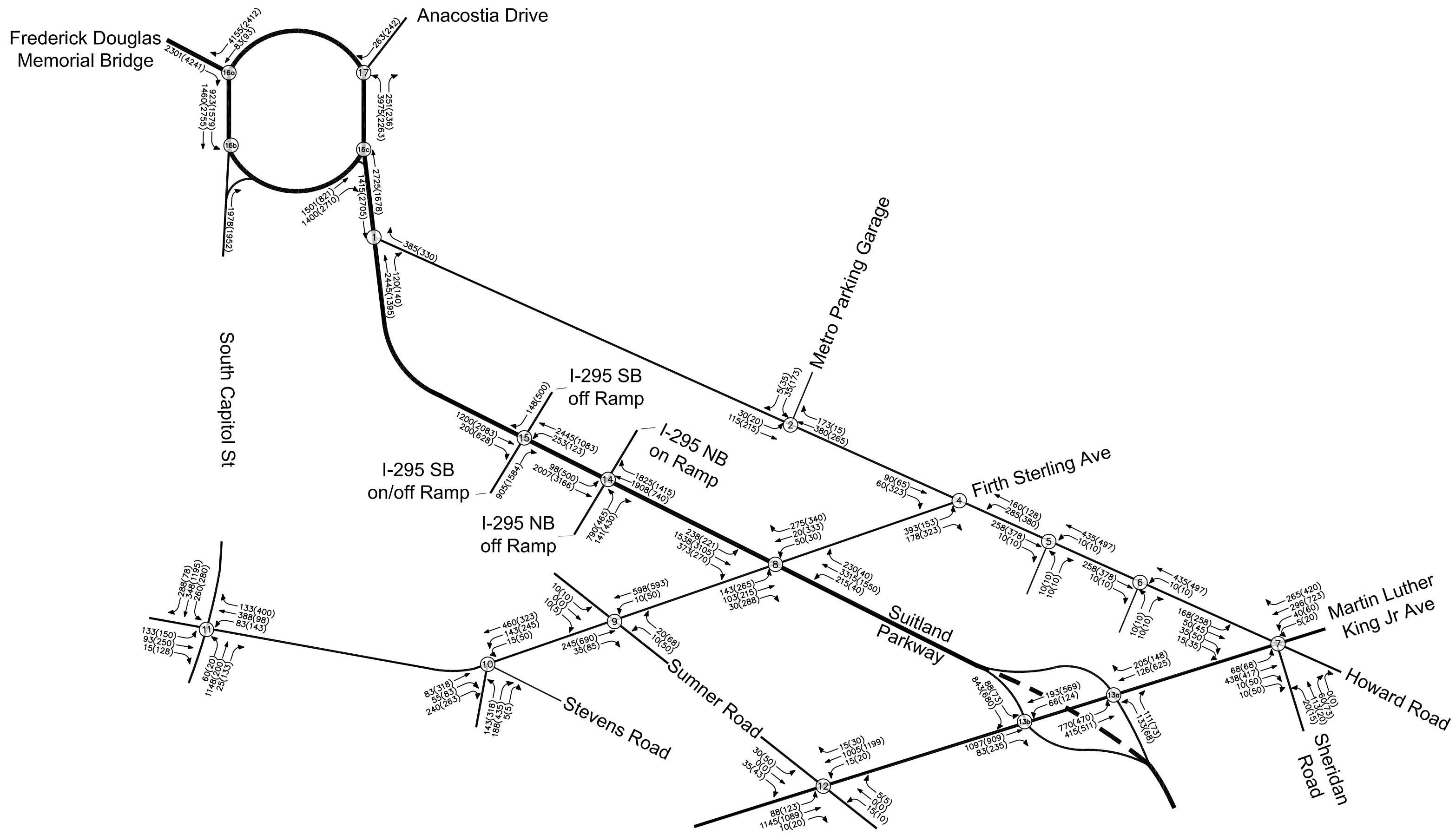


Figure 11
2030 Background Traffic Volumes

Poplar Point
Washington, DC

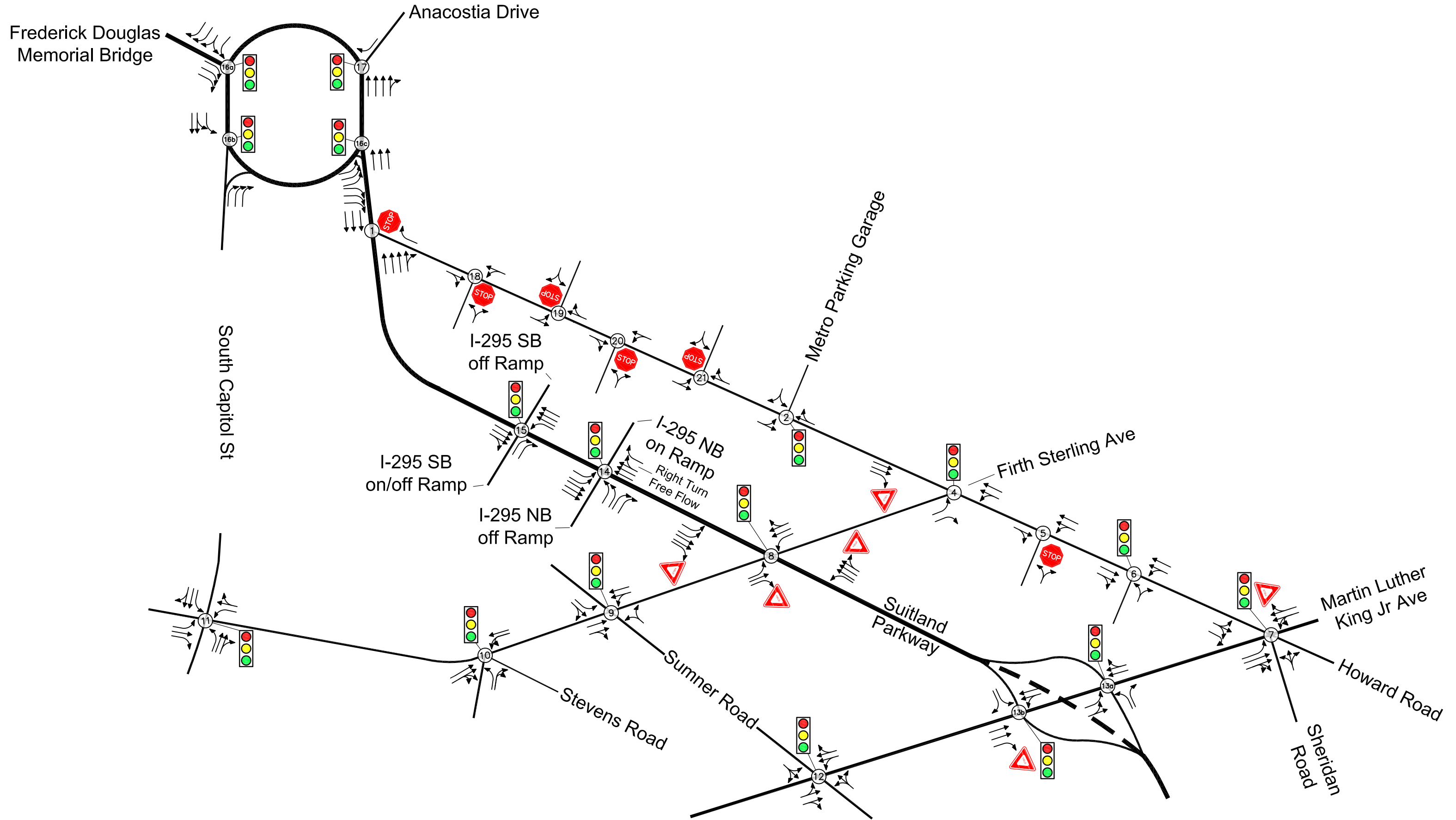
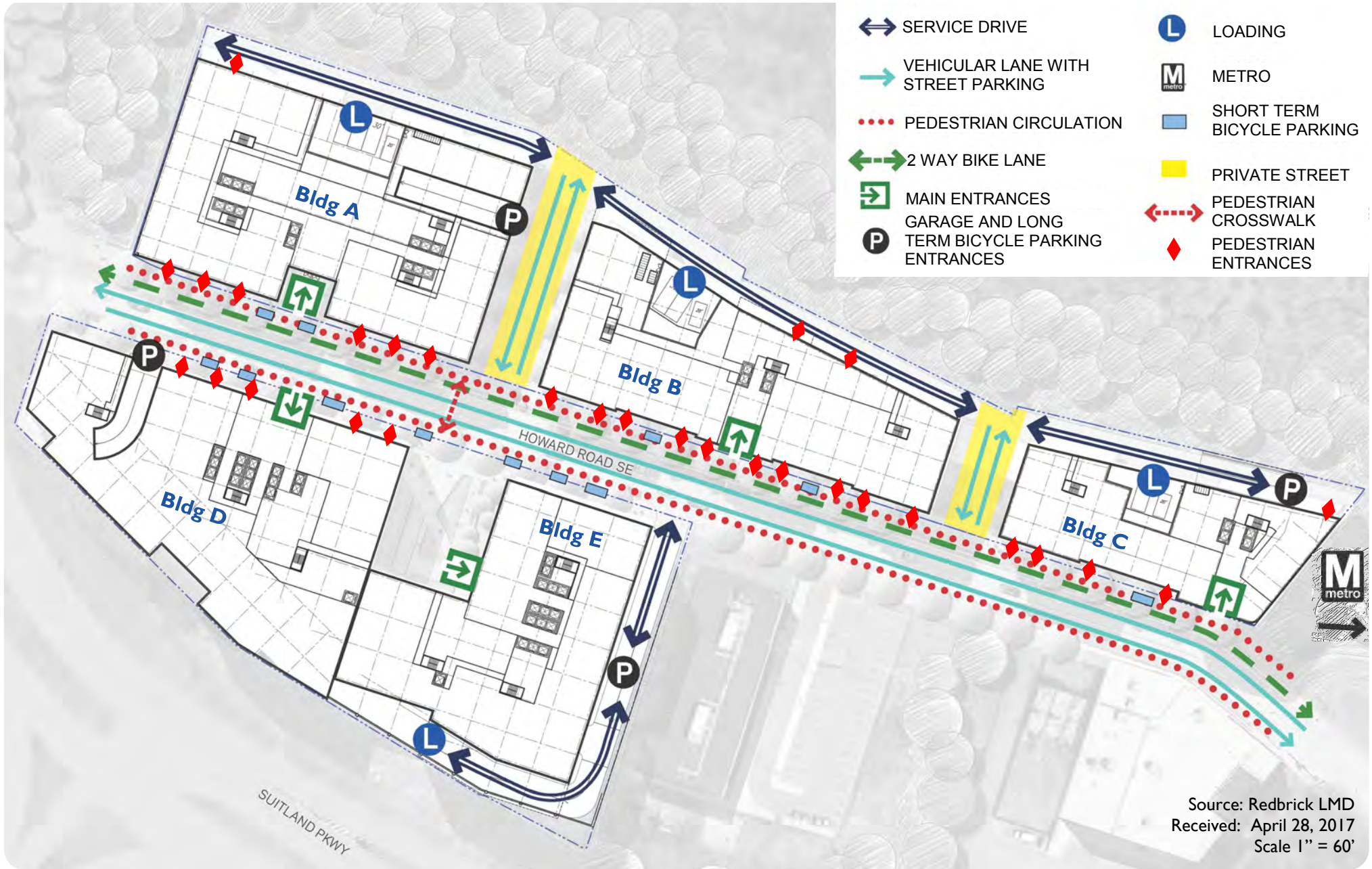


Figure 12
Future Lane Use and Traffic Control

Poplar Point
Washington, DC

- ← Represents One Travel Lane
- 🚦 Signalized Intersection
- 🛑 Stop Sign
- 🚧 Yield Sign





Source: Redbrick LMD
 Received: April 28, 2017
 Scale 1" = 60'

Figure 13A
 Site Circulation

Poplar Point
 Washington, DC





Source: Redbrick LMD
Received: April 28, 2017

Figure 13B
Long-term Bicycle Parking Access

Poplar Point
Washington, DC



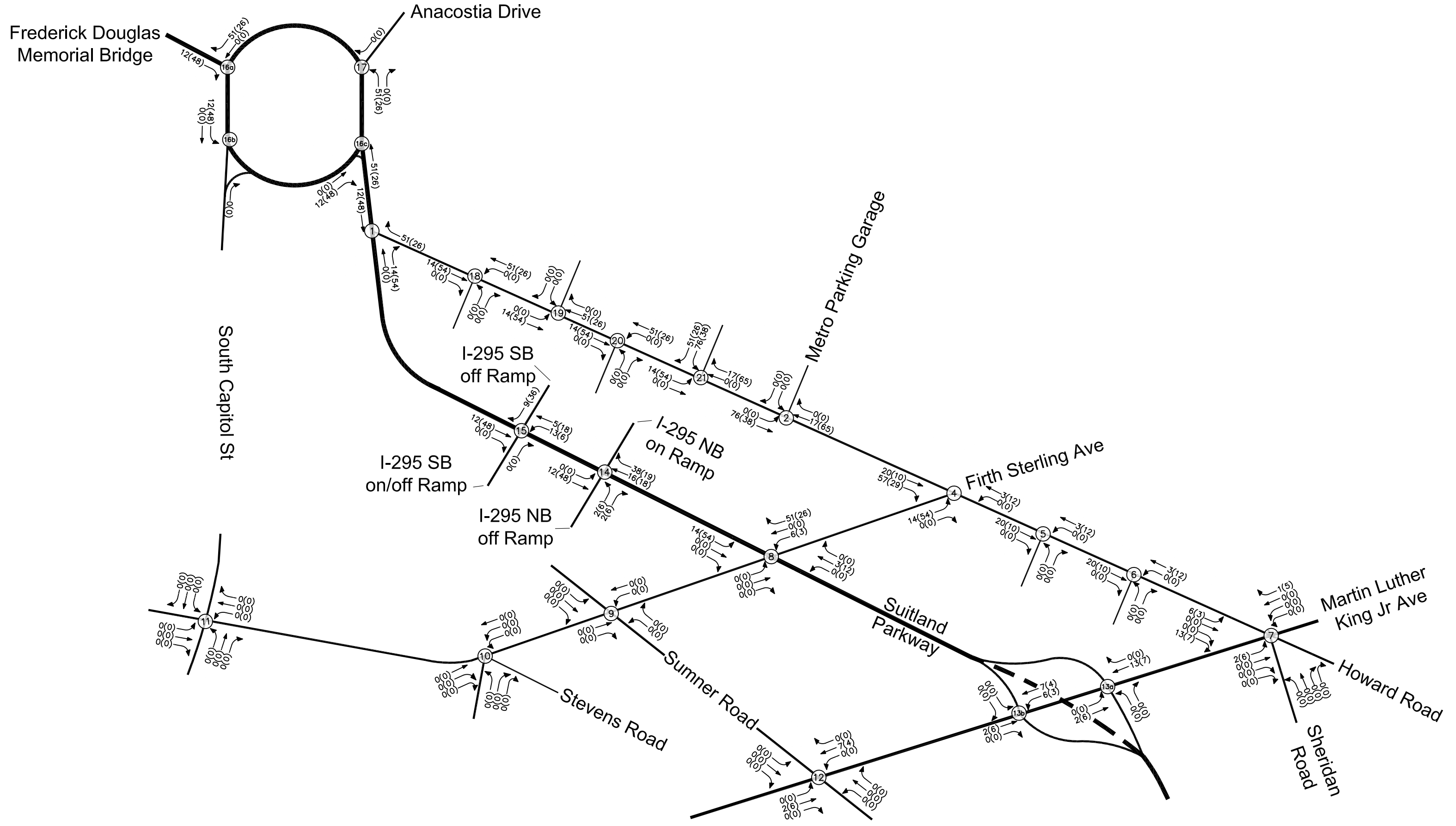


Figure I4A
Residential Site Trips

Poplar Point
Washington, DC

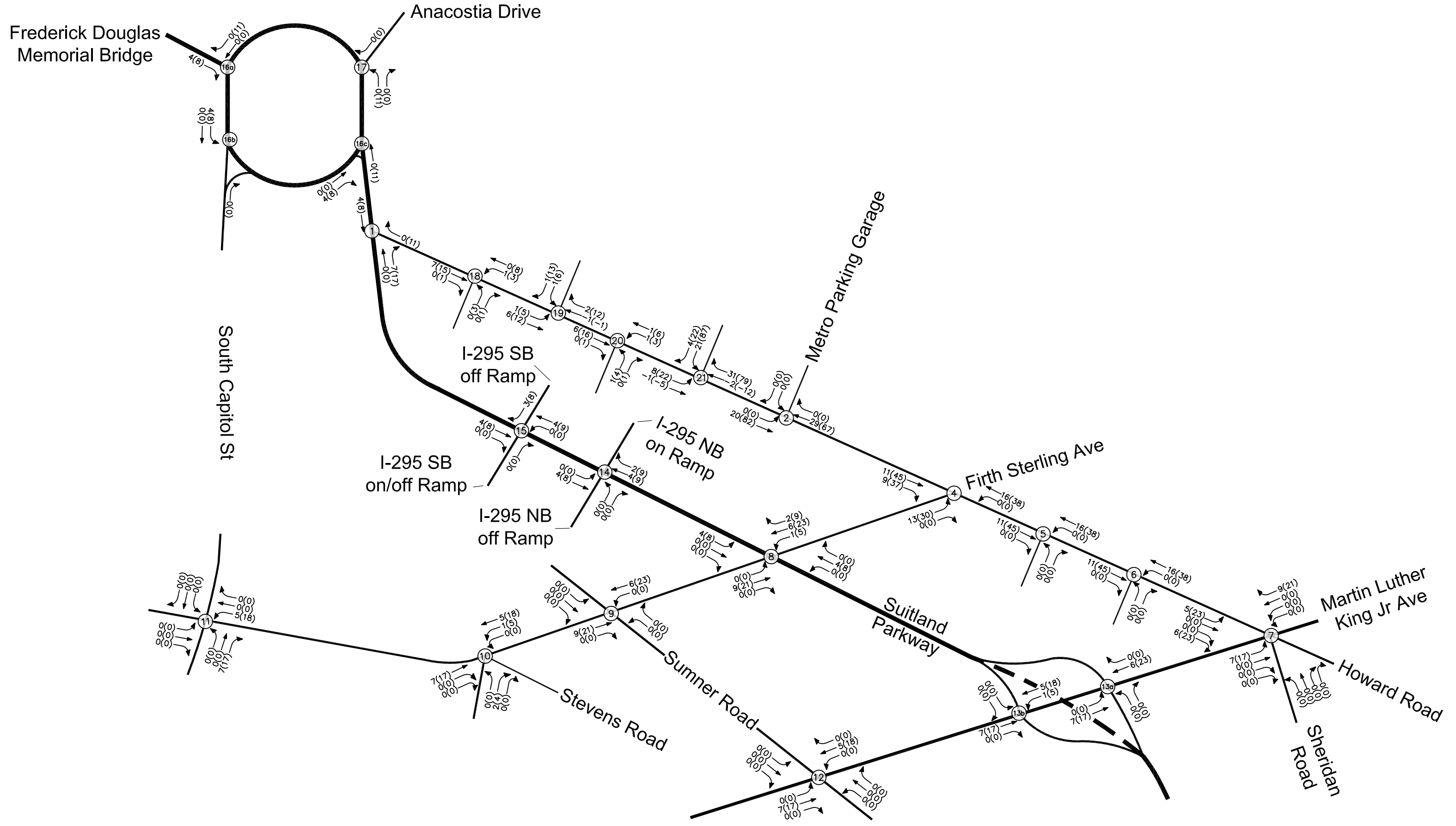


Figure 14B
New Retail Site Trips

Poplar Point
Washington, DC

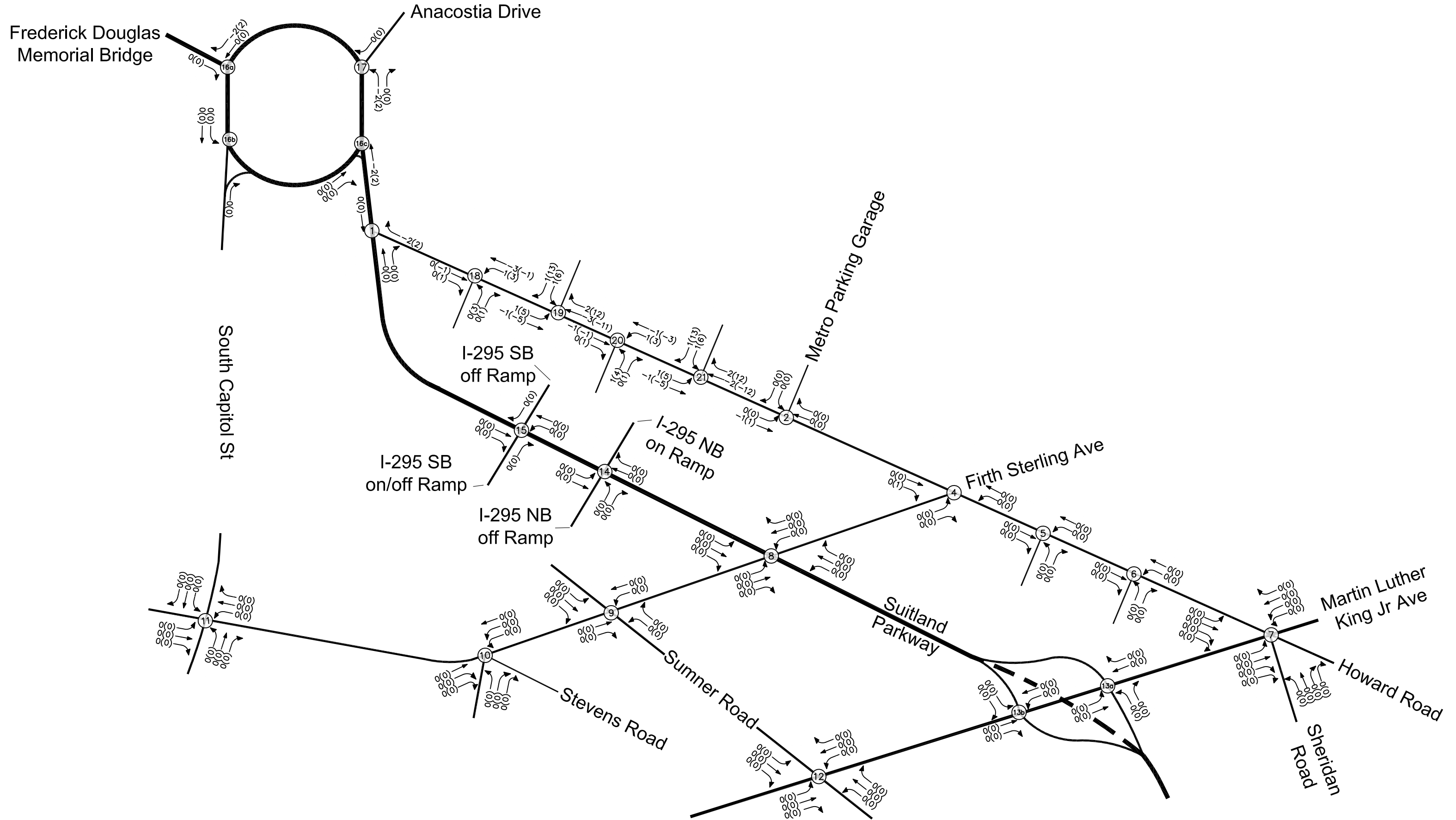


Figure I4C
Pass-by Retail Site Trips

Poplar Point
Washington, DC

AM Peak Hour
PM Peak Hour
000(000)

NORTH

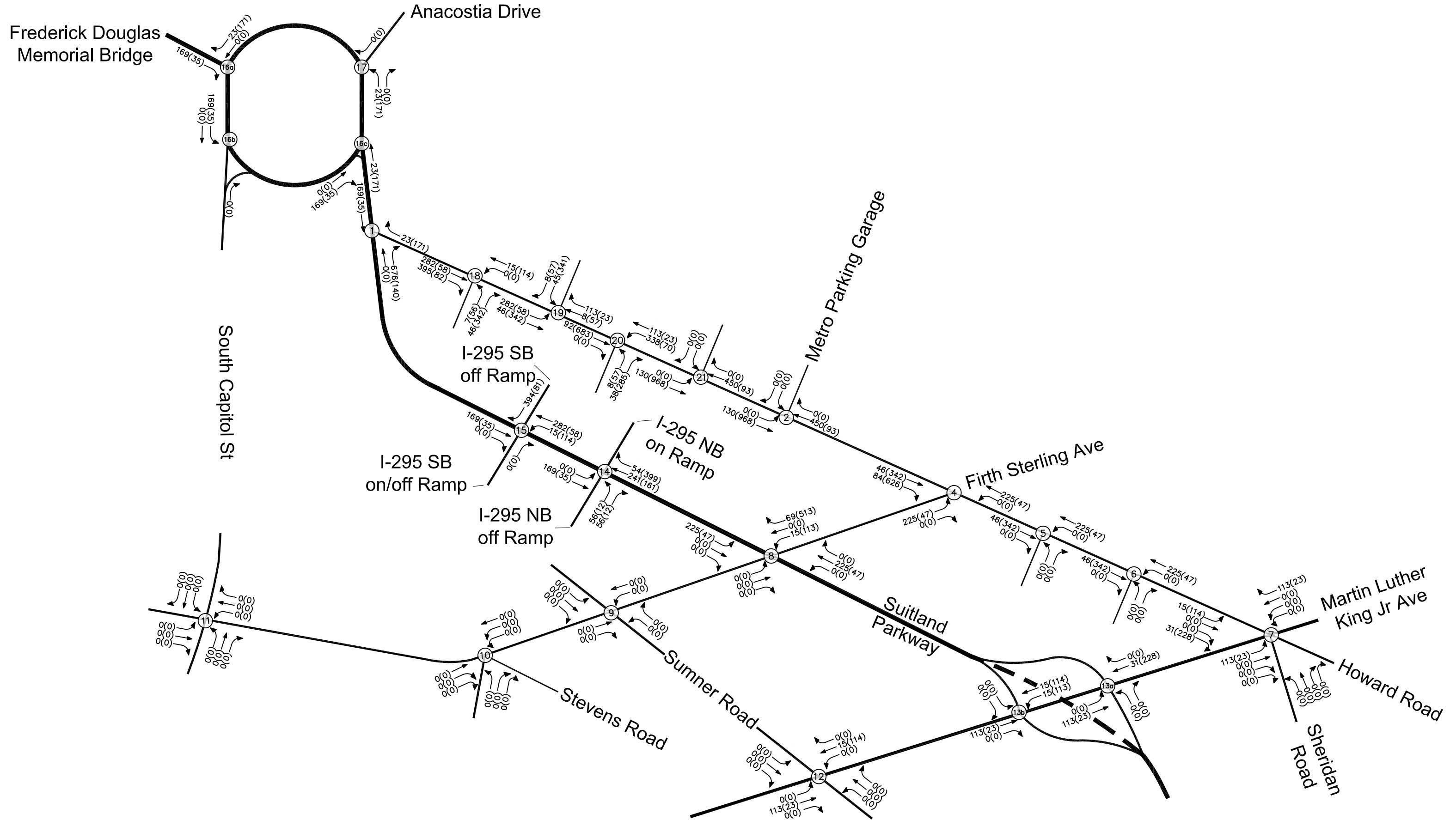


Figure I4D
Office Site Trips

Poplar Point
Washington, DC

AM Peak Hour
PM Peak Hour
000(000)



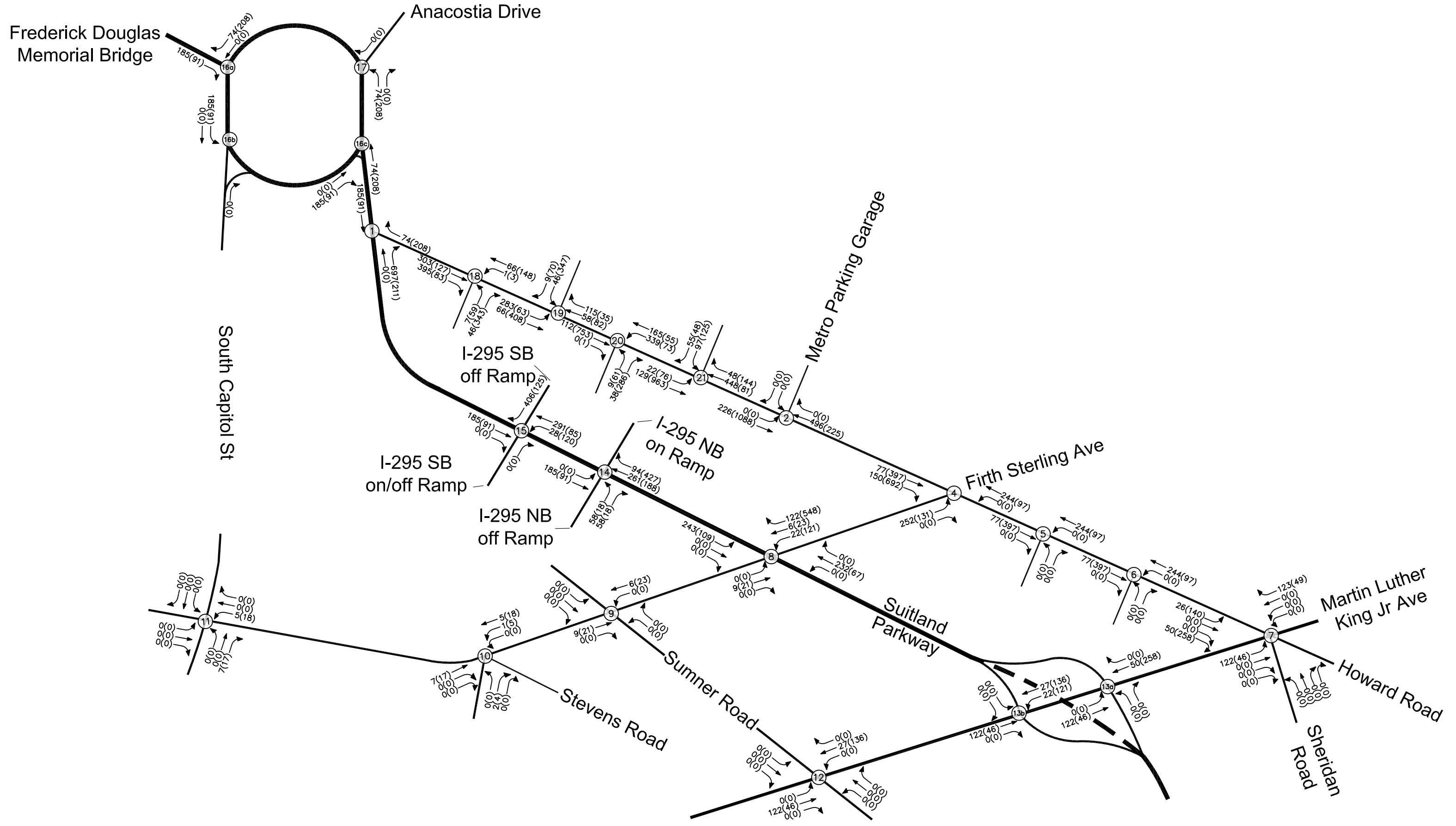


Figure I4E
Total Site Trips

Poplar Point
Washington, DC

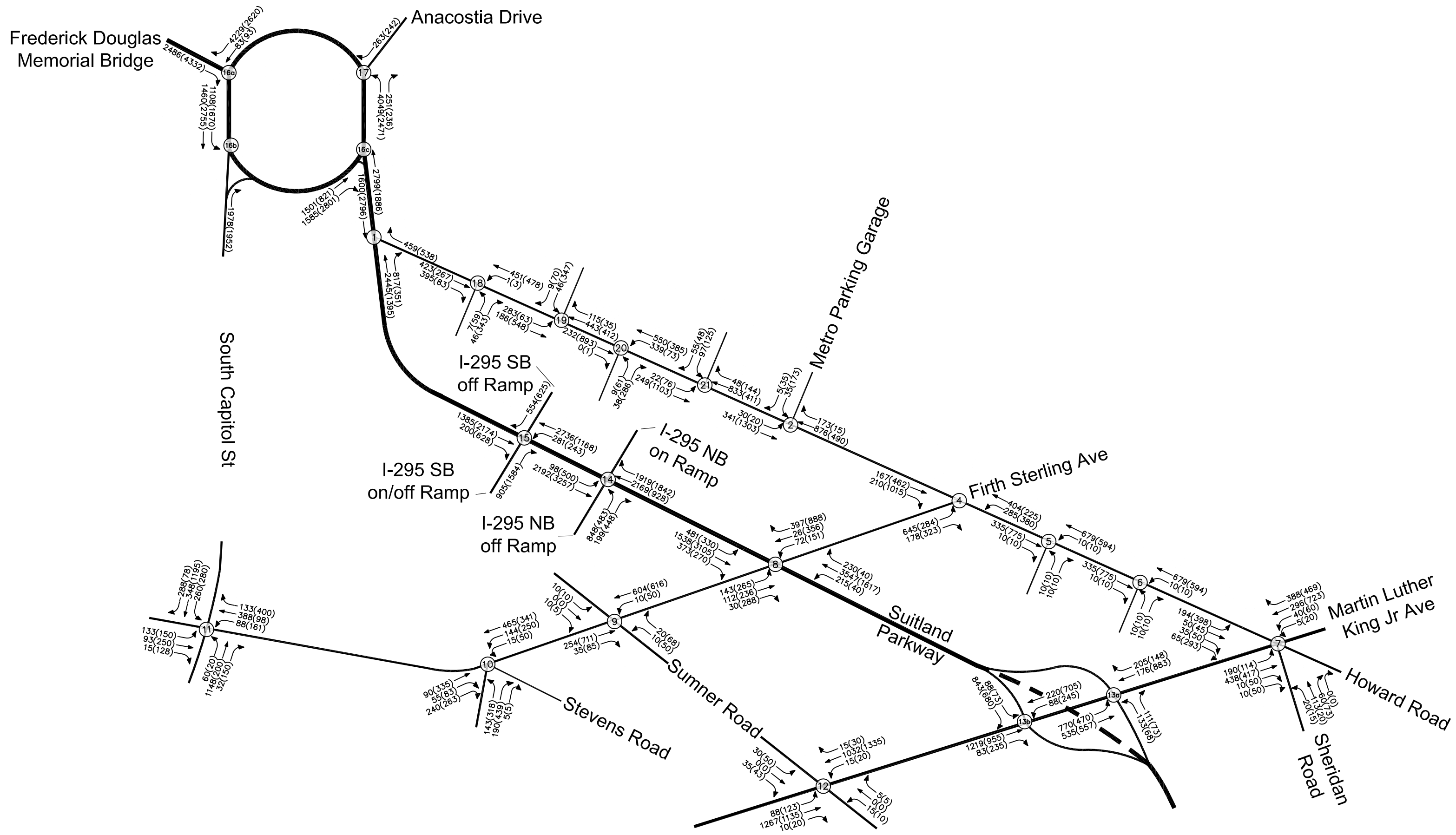


Figure I5
2030 Total Future Traffic Volumes

Poplar Point
Washington, DC

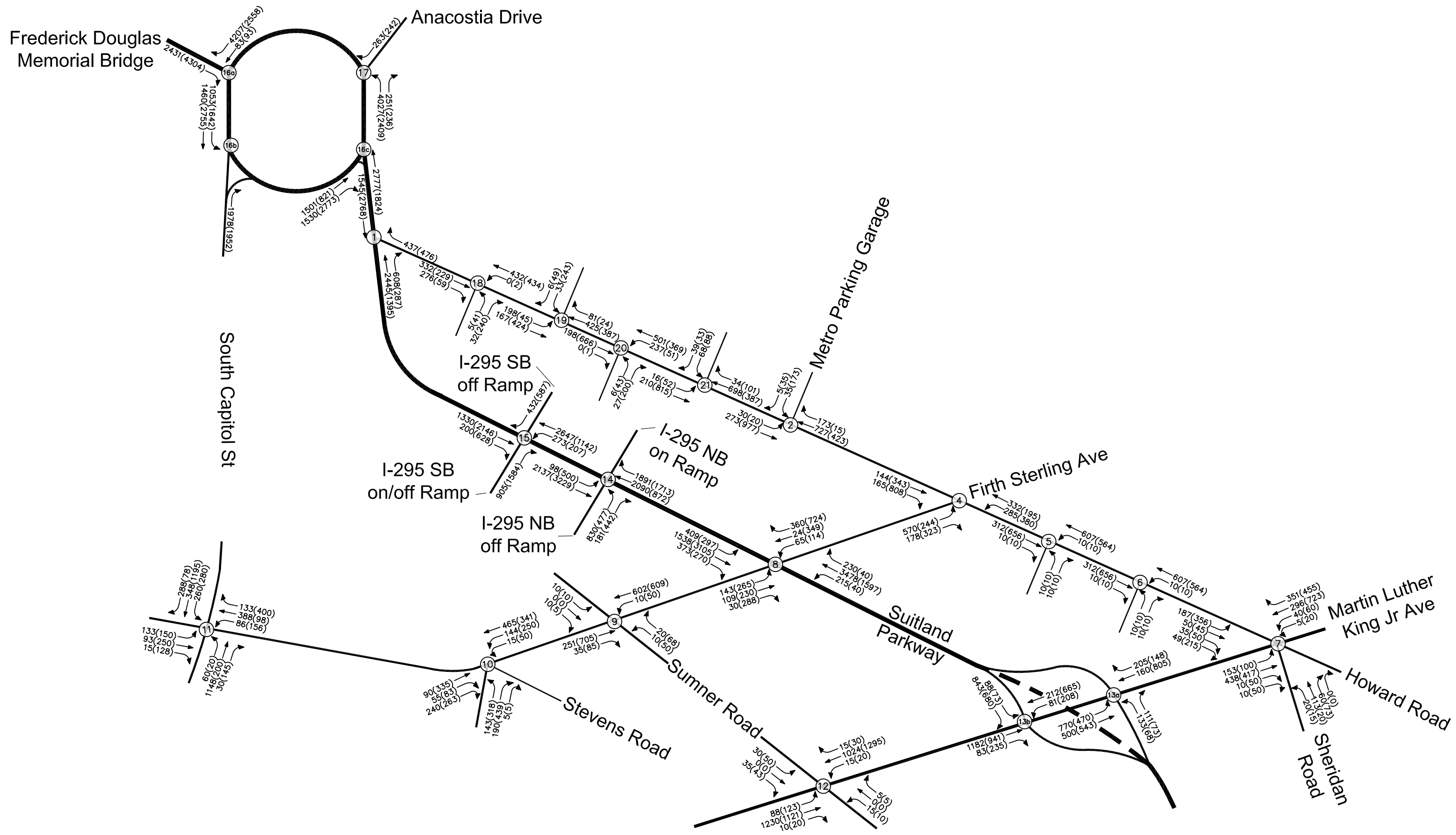


Figure 16
2030 Total Future Traffic Volumes with 30 Percent Reduction

Poplar Point
Washington, DC