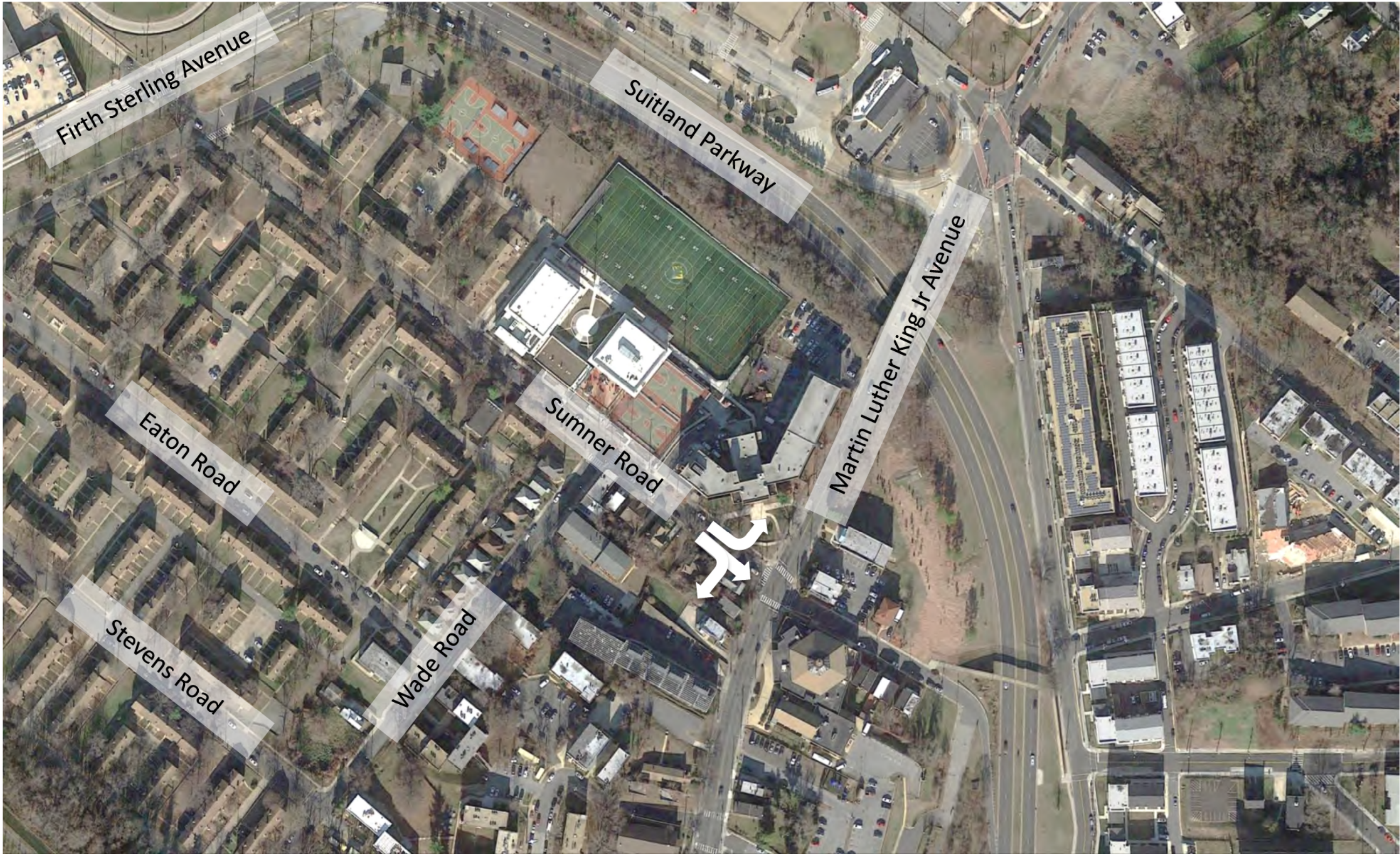


Restripe Sumner Road/Martin Luther King Jr. Avenue



TDM Plan

- Designate a Transportation Management Coordinator
- Install Transit Screens in a common space in each building
- Include transportation information on property management website
- Provide covered, secure bicycle parking
- Provide a bicycle repair station provided on P1 level of each garage
- Provide two car sharing spaces, subject to agreement by the car sharing provider
- Provide shower and changing facilities for building
- Designate parking for carpools or vanpools in the garage
- Unbundle the cost of parking from leases
- Provide personalized outreach to new residents regarding transportation options
- Install 19 electric car charging stations provided in the garage on the north and south parcel**
- Fund the installation and 1st year's operating cost for a new Capital Bikeshare station near the site**
- Provide an annual Capital Bikeshare membership to all new residents over the age of 16 for the first 5 years of occupancy**
- Provide an annual car share membership to all new residents over the age of 16 for the first 3 years of occupancy**
- Provide one shopping cart for every 50 resident units**
- Provide one cargo bike for every 100 residential units**
- Host a biannual meeting with goDCgo to inform residents and employers of commute alternatives**

Conclusion

- The Applicant proposes significant multi-modal transportation improvements focusing on vehicles, pedestrians, and bicycles
- The Applicant has agreed to implement a Transportation Management Plan
- Additional traffic studies will be conducted during the 2nd Stage PUD processes to determine phasing of improvements and to refine the details of the TMP
- With the implementation of the multi-modal improvement and a robust TMP, the project is not anticipated to have an adverse impact on the surrounding roadway network

BACK OF TRAY

Proposed Parking

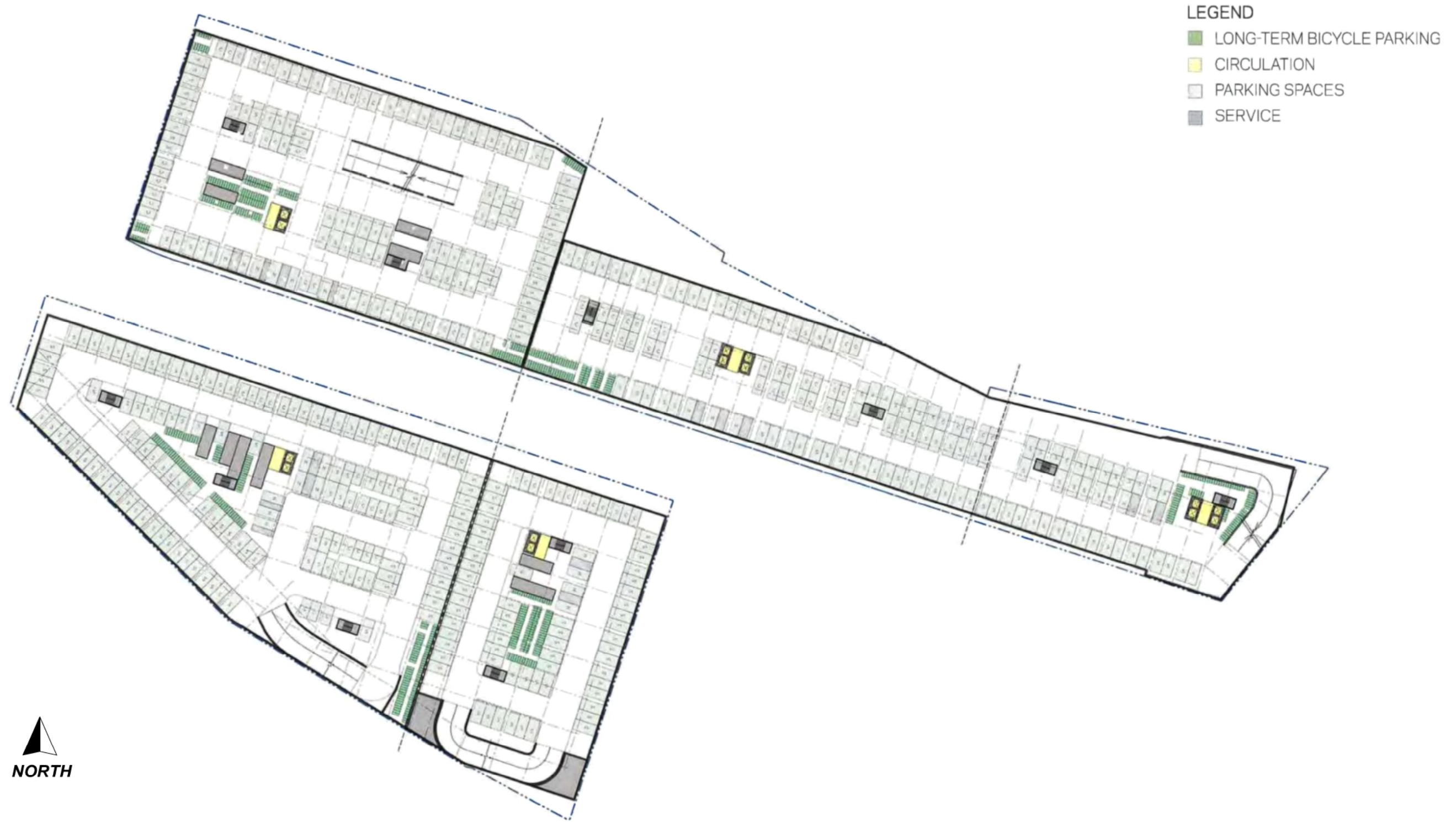
VEHICULAR PARKING SUMMARY	REQUIRED	PROPOSED
Residential	234 spaces	979 spaces
Retail	40 spaces	
Office	850 spaces	
Sub-total	1,125 spaces	979 spaces
Total Required with Metro reduction	562 spaces	

LONG-TERM BICYCLE PARKING SUMMARY	REQUIRED	PROPOSED
Residential	237 spaces	672 spaces
Retail	4 spaces	
Office	392 spaces	
Total	632 spaces	672 spaces

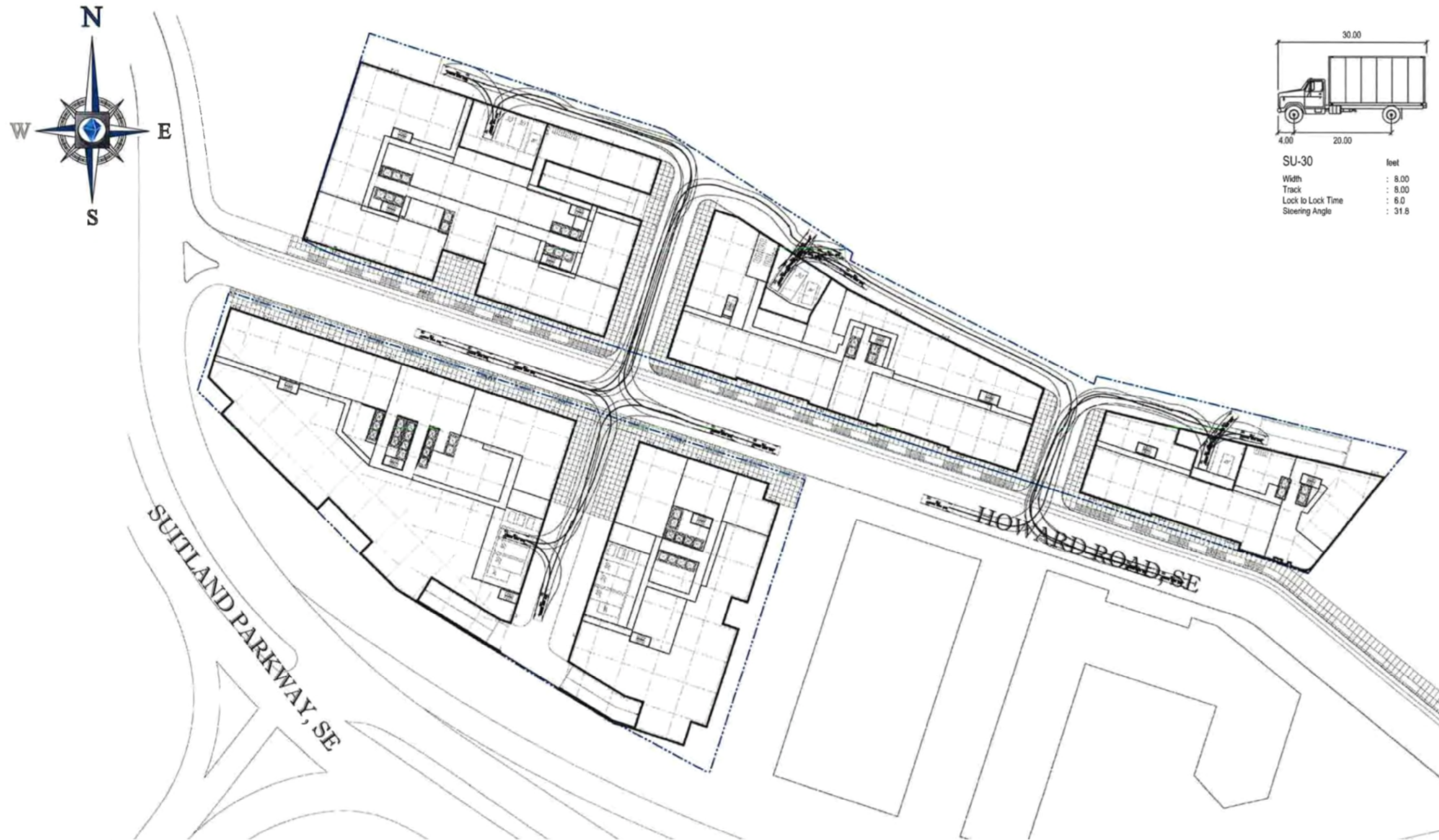
Proposed Loading

REQUIRED				PROPOSED
Residential	Retail	Office	Total	9 berths 4 service/delivery space
1 30-foot berth 1 service/delivery space	2 30-foot berth 1 service/delivery space	6 30-foot berth 1 service/delivery space	8 30-foot berth 3 service/delivery space	

Long-term Bicycle Parking Access



Swept Area Diagram



Source: Bohler DC

Study Area Map



