



Columbian Quarter At Poplar Point

**Transportation Overview
Zoning Commission
December 4, 2017**

Transportation Overview

- ❑ Site Context
- ❑ Site Circulation
- ❑ Trip Generation
- ❑ Proposed Improvements
 - TDM Plan
 - Installation of Traffic Signal
- ❑ DDOT Conditions
- ❑ Conclusions

Multi-Modal Transportation Network






- XX Metrobus Route
- XX MetroExtra Route
- M Anacostia Metro Station (Green Line)
- B Bus Stop
- # Capital Bikeshare Locations (Number of Docks)
- # Zipcar Locations (Number of Zipcars)



Significant Infrastructure Improvements



Phase 1

-  **Segment 1** - Frederick Douglass Memorial Bridge and Approaches
-  **Segment 2** - I-295/Suitland Parkway Interchange Reconstruction
-  Existing bridge and pavement to be removed

Phase 2

-  **Segment 3** - New Interchange at Suitland Parkway/Martin Luther King, Jr. Avenue SE
-  **Segment - 4** South Capitol Street including M Street
-  **Segment - 5** New Jersey Avenue Streetscape Improvements



Site Circulation

LEGEND

- ↔ SERVICE DRIVE
- VEHICULAR LANE WITH STREET PARKING
- ⋯ PEDESTRIAN CIRCULATION
- ↔ 2 WAY BIKE LANE
- ➔ PEDESTRIAN ENTRANCES
- Ⓟ GARAGE ENTRANCES
- Ⓛ LOADING
- Ⓜ METRO
- SHORT-TERM BICYCLE PARKING
- PRIVATE STREET
- ↔ PEDESTRIAN CROSSWALK



Trip Generation

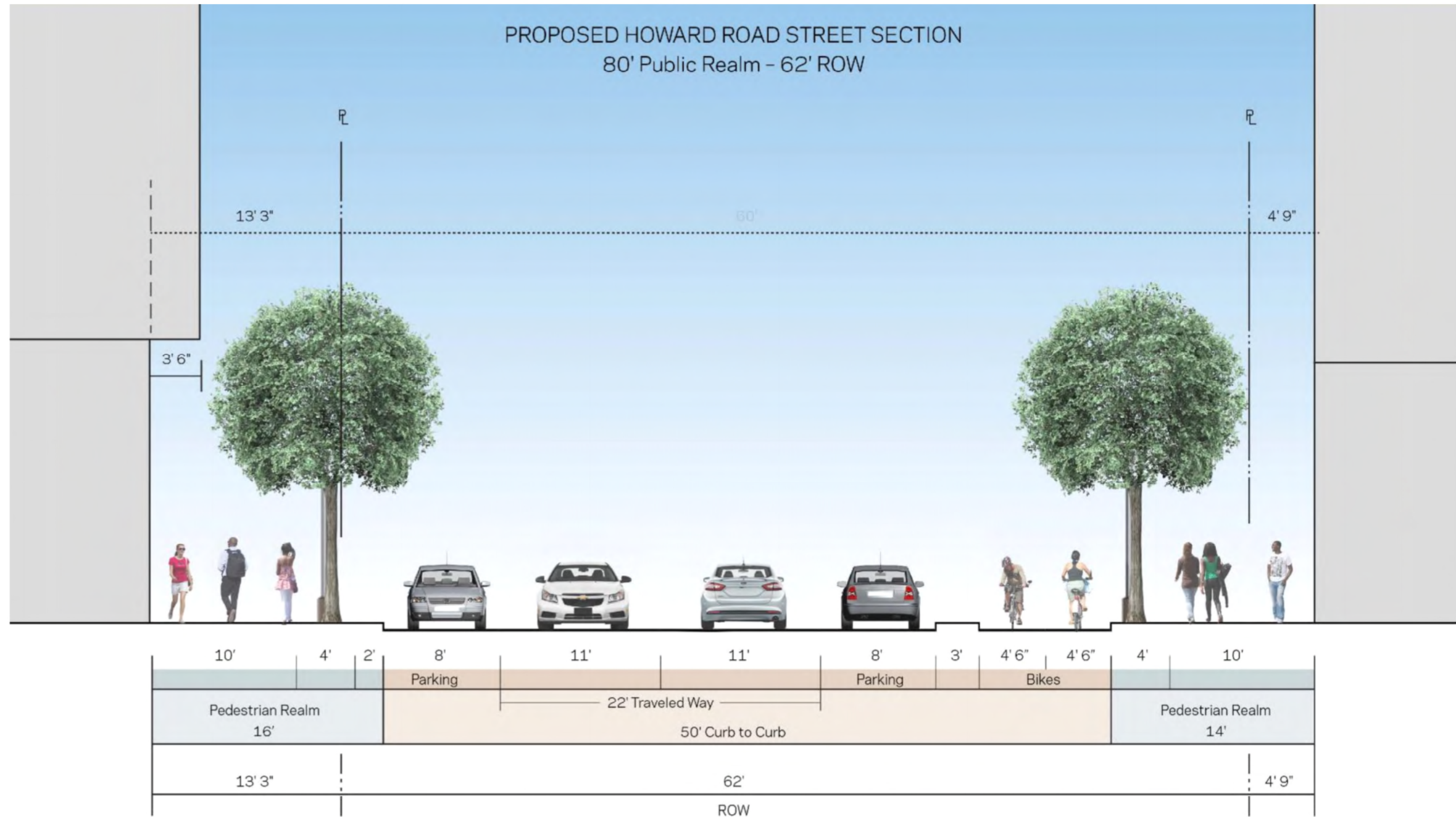
Site Trip Generation Summary

Vehicular Trips	AM Peak Hour			PM Peak Hour		
	In	Out	Total	In	Out	Total
Phase 1	20	54	74	64	43	107
Phase 2	730	103	833	167	749	916
Phase 3	444	145	589	205	501	706

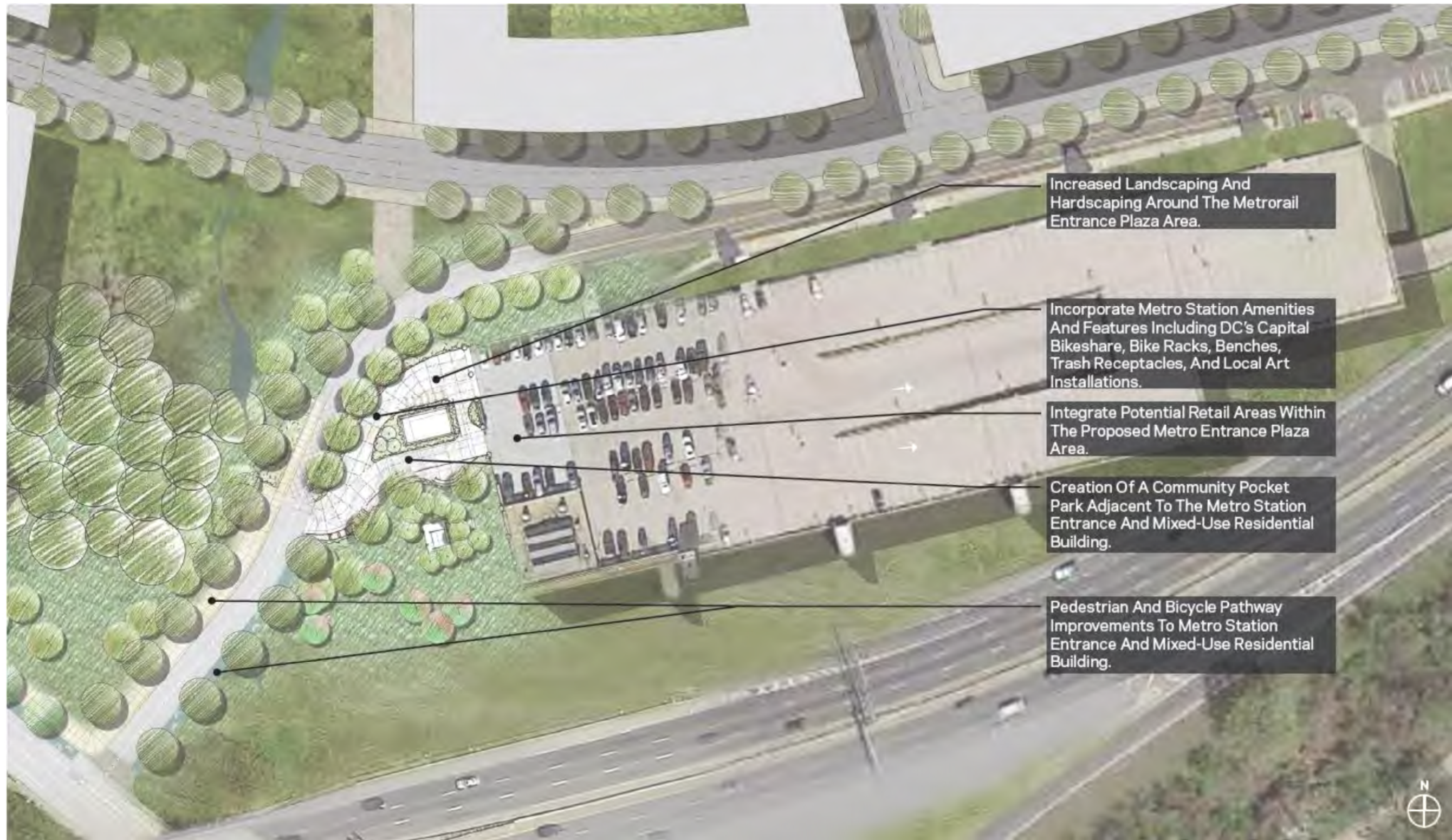
Proposed Transportation Improvements

- Reconstruct Howard Road, including:
 - Vehicular Travel Lane
 - Cycle Track
 - Wider Sidewalk
- Reconstruct access to Anacostia Metro Station parking garage,
 - Including pedestrian and bicycle improvements
 - Including traffic signal modifications
- Install a traffic signal at Howard Road/Suitland Parkway
- Modify signal phasing at Howard Road/Firth Sterling Avenue
- Modify signal phasing at Firth Sterling Avenue/Suitland Parkway
- Restripe Sumner Road at its approval to Martin Luther King Jr Avenue to provide separate left and right turn lanes
- Install Traffic Signal, if warranted, at Howard Road/Private Road**
- Implement a TDM Plan

Proposed Howard Road Cross Section



Proposed Anacostia Metro Station Improvements



Proposed Transportation Improvements

