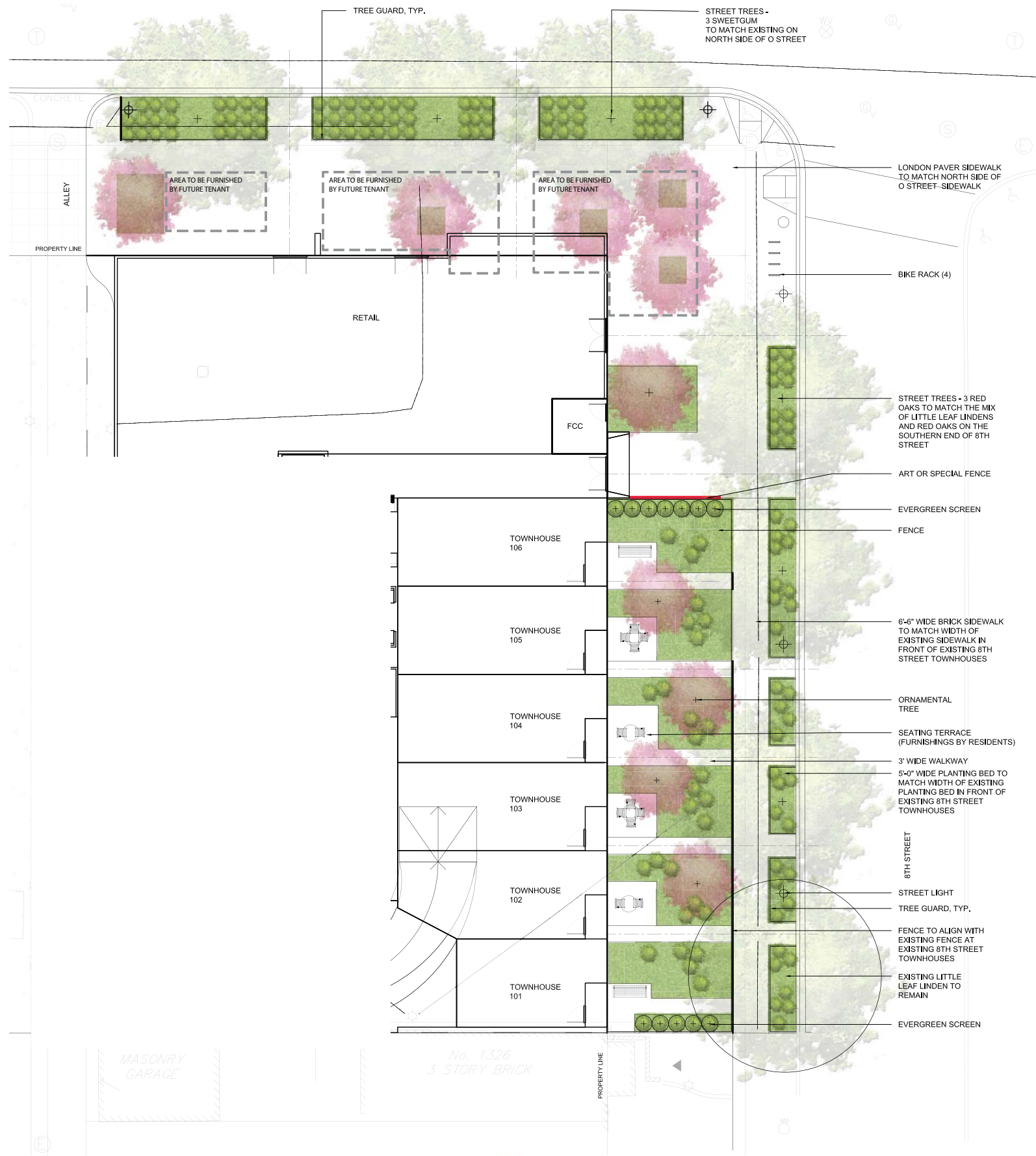


Ground Level Plan



Precedent image for proposed cafe seating area under trees.



Street Light.



Street tree along 8th Street - Red Oak.



Street tree along O Street - Sweetgum.



Precedent image of tables and chairs and ornamental tree.



Precedent image of art or special fencing at lobby entrance.



Trash receptacle.



Bike rack.

8TH & O STREETS, N.W.



WASHINGTON, DC

May 5th, 2017 PUD Re-submission

copyright, ©2016 | sba, PC

Landscape architects

shalom baranes associates L-01

ZONING COMMISSION
 500 Columbia
 CASE NO.16-24
 EXHIBIT NO.32A6

Composite Roof Plan



Precedent image of shade structure.



Ornamental tree - Redbud.



Precedent images of decorative privacy screens.



Precedent image of greenscreen.



Precedent image of tables and chairs and ornamental tree.



Precedent image of fire lounge.

8TH & O STREETS, N.W.



WASHINGTON, DC

May 5th, 2017 PUD Re-submission

copyright, ©2016 | sba, PC

Landscape architects

shalom baranes associates

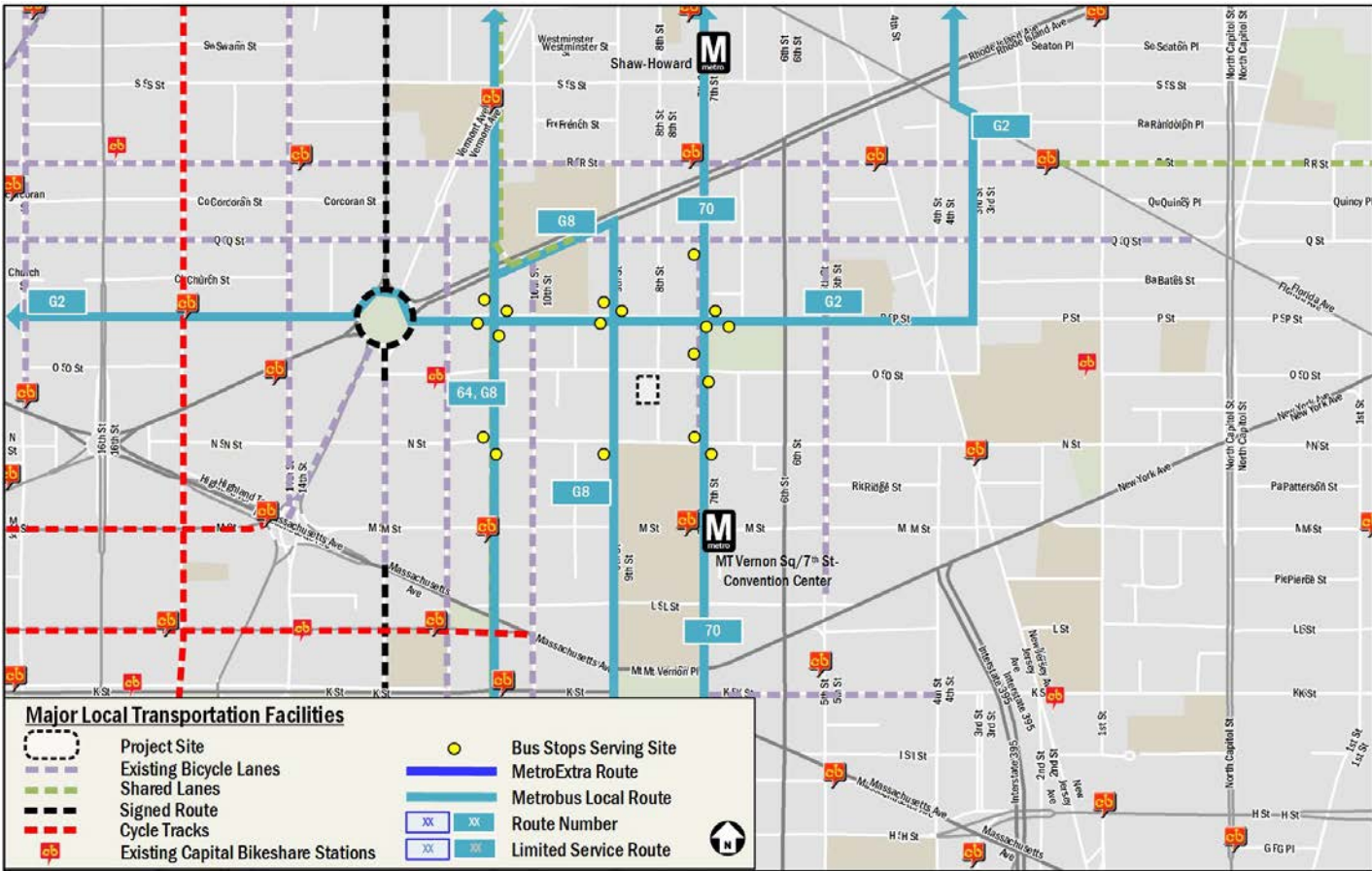
L-02

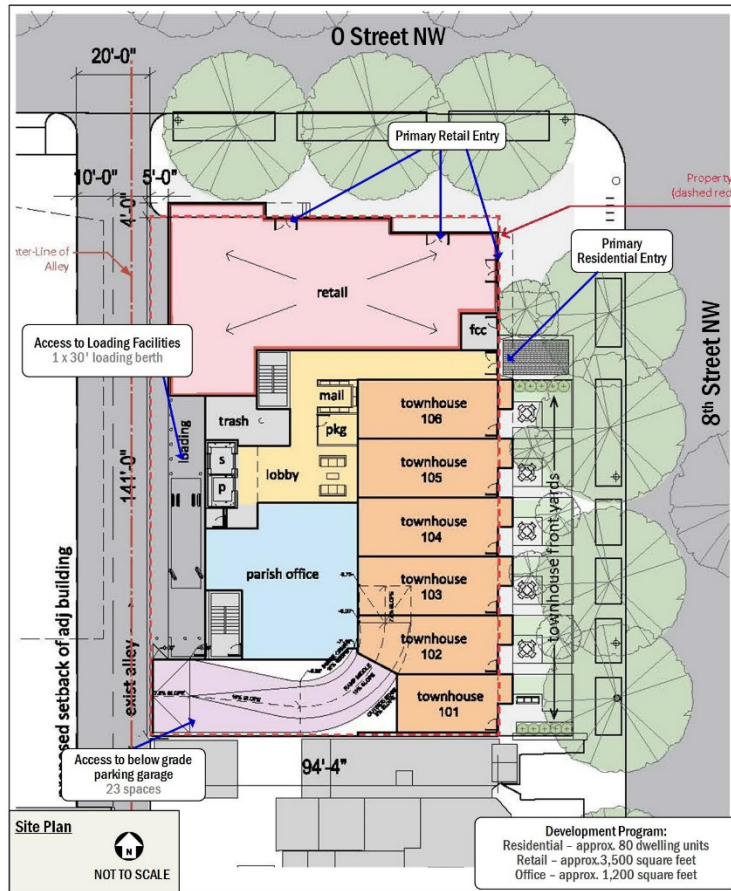


8th & O Streets NW PUD ZC Case #16-24

Transportation Discussion







Parking and Loading Facilities

- Vehicular Parking
 - Required – 14
 - *Provided – 23*
- Bicycle Parking
 - Long-term
 - Required – 27
 - *Provided – 27*
 - Short-term
 - Required – 6
 - *Provided – 8*
- Loading
 - Required – One 30' loading berth and one 20' service/delivery
 - *Provided – One 30' loading berth*



Comprehensive Transportation Review

- Scoped with DDOT
- Existing site generated trips similar to new PUD
- No increase in intersection delays
- PUD will not have a detrimental impact
- DDOT no objection with conditions
- Applicant agrees to all conditions



Transportation Demand Management

- TDM Leaders
- Welcome packages
- Unbundled parking cost and charge market rate
- Exceed bicycle parking requirements
- Transit information screen in lobby

Added per DDOT request:

- Annual Capital Bikeshare membership for each unit for 3 years
- Bicycle repair station
- TDM Coordinator contact info and annual reporting

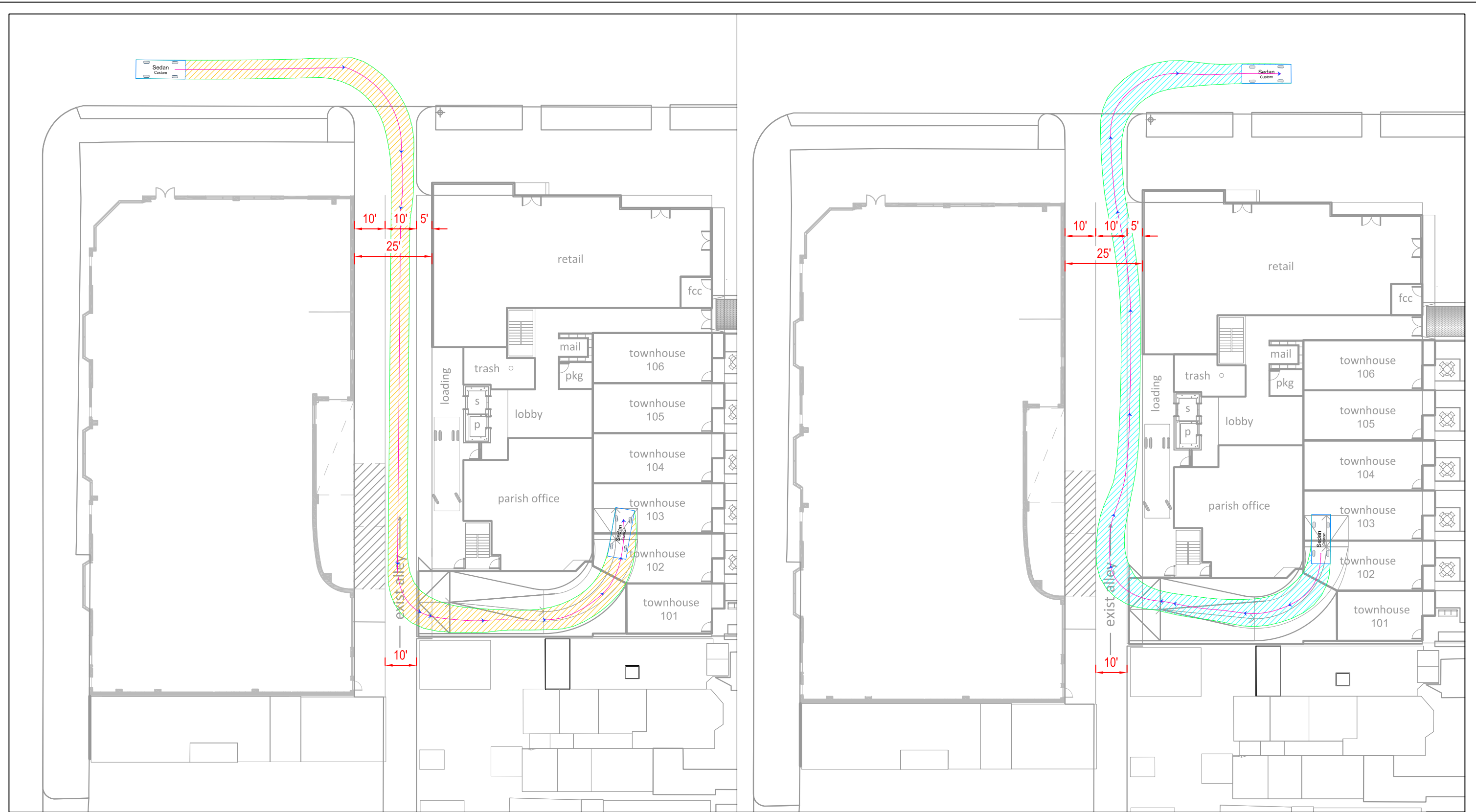




8th & O Streets NW PUD ZC Case #16-24

Maneuvering Analysis



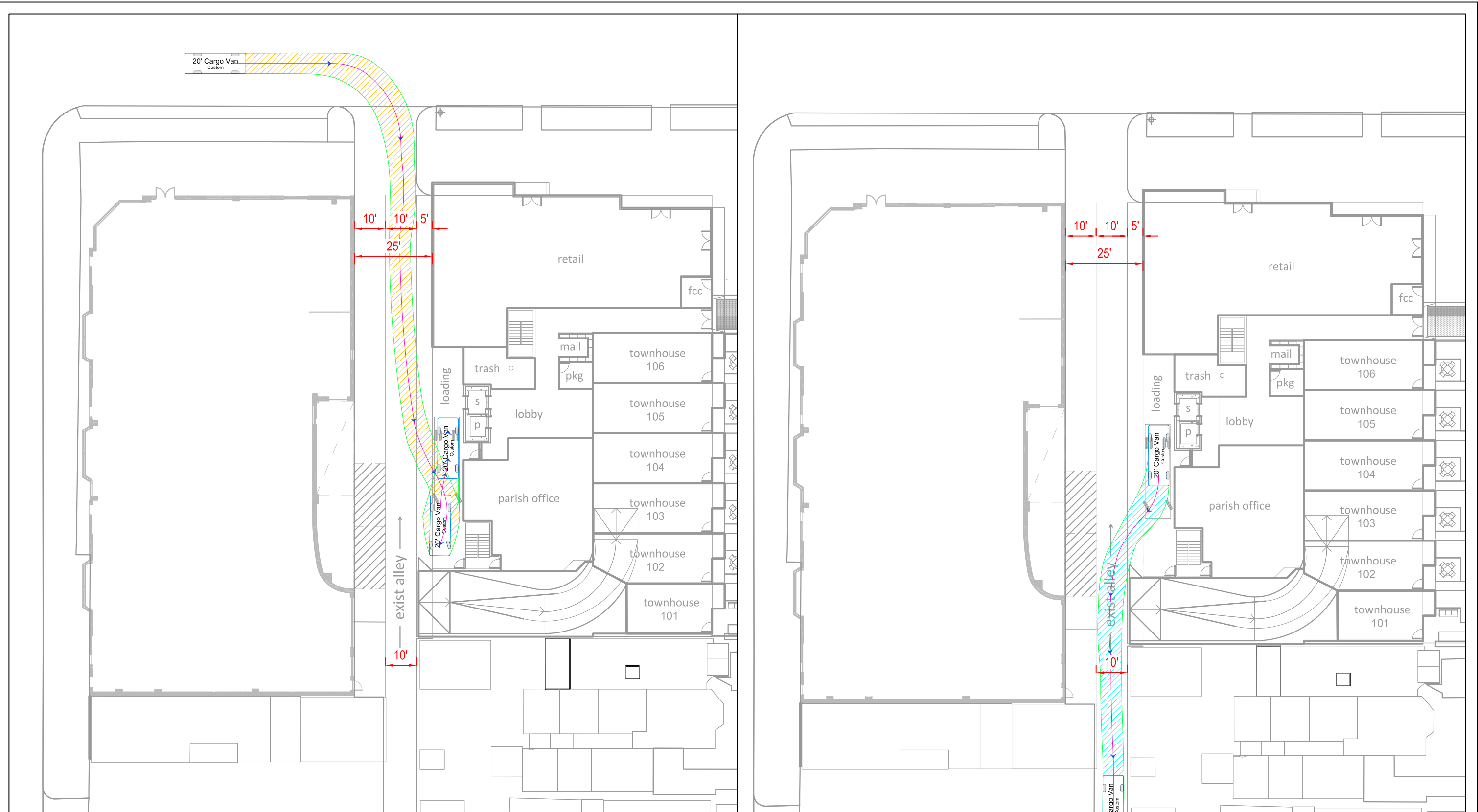


8th & O Street PUD

Loading Access - Design Vehicle: Sedan
 Roadside Development

May 22, 2017



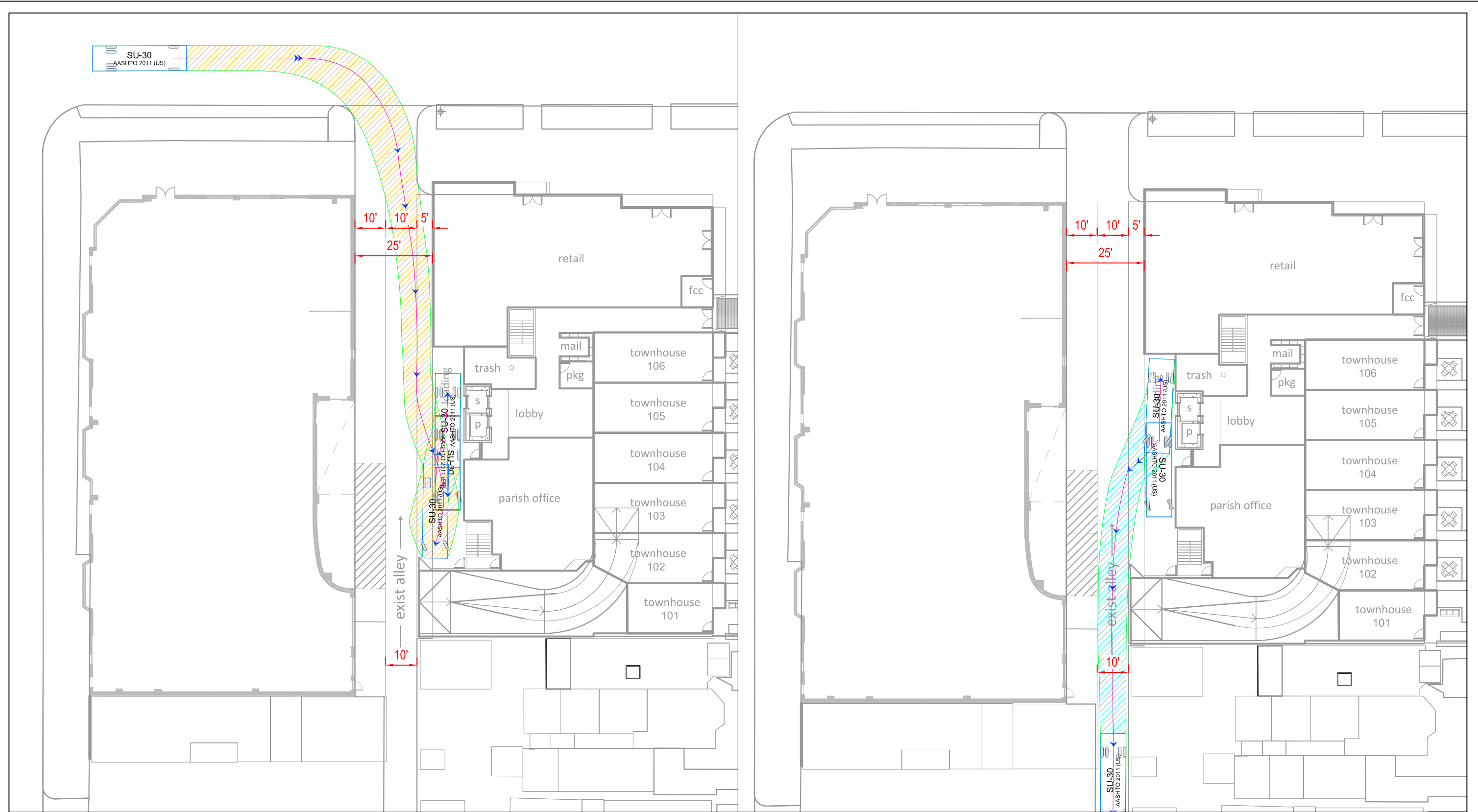


8th & O Street PUD

Loading Access - Design Vehicle: 20' Cargo Van
 Roadside Development

May 22, 2017





8th & O Street PUD

Loading Access - Design Vehicle: SU-30
 Roadside Development

May 22, 2017

