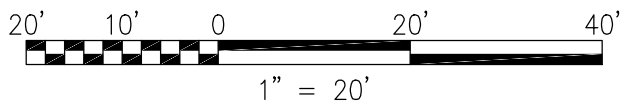


- SITE KEYNOTES:**
- 1 NEW BUILDING. REFER TO ARCHITECTURAL DRAWING FOR DETAILS.
  - 2 NEW TOWNHOUSE. REFER TO ARCHITECTURAL DRAWING FOR DETAILS.
  - 3 NEW CONCRETE ALLEY PAVEMENT PER DC/DDOT STANDARDS AND SPECIFICATIONS. SEE SHEET C6 FOR DETAILS.
  - 4 NEW CONCRETE APRON PER DC/DDOT STANDARDS AND SPECIFICATIONS. SEE SHEET C6 FOR DETAILS.
  - 5 NEW CONCRETE DRIVEWAY ENTRANCE WITH 6'-0" RADIUS PER DC/DDOT STANDARDS AND SPECIFICATIONS. SEE SHEET C6 FOR DETAILS.
  - 6 NEW LONDON PAVER SIDEWALK PER DC/DDOT STANDARDS AND SPECIFICATIONS. SEE SHEET C6 FOR DETAILS.
  - 7 NEW ASPHALT PAVEMENT SURFACE COURSE FROM FACE OF CURB TO THE CENTERLINE OF ROAD PER DDOT STANDARDS AND SPECIFICATIONS.
  - 8 NEW ASPHALT PAVEMENT AT FULL DEPTH PER DC/DDOT STANDARDS AND SPECIFICATIONS. SEE SHEET C6 FOR DETAILS.
  - 9 NEW GRANITE CURB AND BRICK GUTTER PER DC/DDOT STANDARDS AND SPECIFICATIONS. SEE SHEET C6 FOR DETAILS.
  - 10 NEW STREET TREE PER DC/DDOT UFA STANDARDS AND SPECIFICATIONS. REFER TO LANDSCAPE PLAN FOR DETAILS.
  - 11 NEW CONCRETE PAVEMENT WITH LONDON PAVER PATTERN TO MATCH SIDEWALK PER DC/DDOT STANDARDS AND SPECIFICATIONS. REFER TO SHEET C6 FOR DETAILS.
  - 12 NEW HANDICAP RAMP PER DC/DDOT STANDARDS AND SPECIFICATIONS. REFER TO SHEET CIV0502 FOR DETAILS.
  - 13 NEW CROSSWALK MARKING PER DC/DDOT STANDARDS AND SPECIFICATIONS.
  - 14 EXISTING STREET TREE TO REMAIN.
  - 15 NEW BRICK SIDEWALK. SEE SHEET C6 FOR DETAILS.
  - 16 NEW GRANITE CURB AND CONCRETE GUTTER PER DC/DDOT STANDARDS AND SPECIFICATIONS. SEE SHEET C6 FOR DETAILS.
  - 17 NEW FENCE. REFER TO LANDSCAPE PLAN FOR DETAILS.
  - 18 NEW BIKE RACK. REFER TO LANDSCAPE PLAN FOR DETAILS.
  - 19 NEW ORNAMENTAL TREE PER DC/DDOT UFA STANDARDS AND SPECIFICATIONS. REFER TO LANDSCAPE PLANS FOR DETAILS.



8<sup>TH</sup> & O STREETS, N.W.



WASHINGTON, DC

May 5<sup>th</sup>, 2017

PUD Re-submission

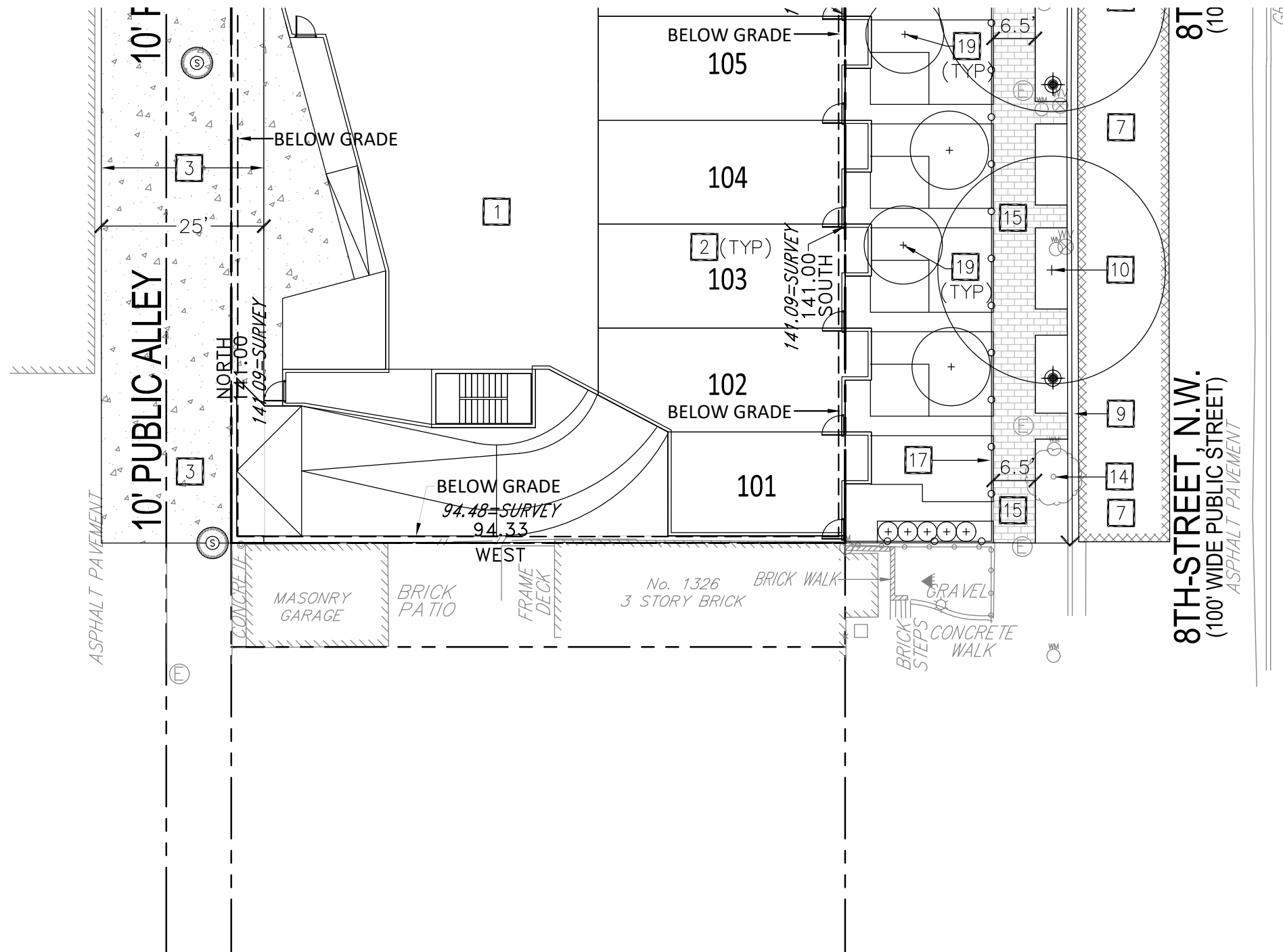
copyright, ©2016 | sba, PC

Site Plan architects

shalom baranes associates

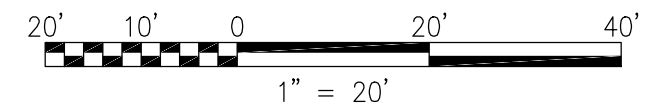
ZONING COMMISSION  
 DC Code Title 22-1102  
 CASE NO.16-24  
 EXHIBIT NO.26A9

C3-01



**SITE KEYNOTES:**

- 1 NEW BUILDING. REFER TO ARCHITECTURAL DRAWING FOR DETAILS.
- 2 NEW TOWNHOUSE. REFER TO ARCHITECTURAL DRAWING FOR DETAILS.
- 3 NEW CONCRETE ALLEY PAVEMENT PER DC/DDOT STANDARDS AND SPECIFICATIONS. SEE SHEET C6 FOR DETAILS.
- 4 NEW CONCRETE APRON PER DC/DDOT STANDARDS AND SPECIFICATIONS. SEE SHEET C6 FOR DETAILS.
- 5 NEW CONCRETE DRIVEWAY ENTRANCE WITH 6'-0" RADIUS PER DC/DDOT STANDARDS AND SPECIFICATIONS. SEE SHEET C6 FOR DETAILS.
- 6 NEW LONDON PAVER SIDEWALK PER DC/DDOT STANDARDS AND SPECIFICATIONS. SEE SHEET C6 FOR DETAILS.
- 7 NEW ASPHALT PAVEMENT SURFACE COURSE FROM FACE OF CURB TO THE CENTERLINE OF ROAD PER DDOT STANDARDS AND SPECIFICATIONS.
- 8 NEW ASPHALT PAVEMENT AT FULL DEPTH PER DC/DDOT STANDARDS AND SPECIFICATIONS. SEE SHEET C6 FOR DETAILS.
- 9 NEW GRANITE CURB AND BRICK GUTTER PER DC/DDOT STANDARDS AND SPECIFICATIONS. SEE SHEET C6 FOR DETAILS.
- 10 NEW STREET TREE PER DC/DDOT UFA STANDARDS AND SPECIFICATIONS. REFER TO LANDSCAPE PLAN FOR DETAILS.
- 11 NEW CONCRETE PAVEMENT WITH LONDON PAVER PATTERN TO MATCH SIDEWALK PER DC/DDOT STANDARDS AND SPECIFICATIONS. REFER TO SHEET C6 FOR DETAILS.
- 12 NEW HANDICAP RAMP PER DC/DDOT STANDARDS AND SPECIFICATIONS. REFER TO SHEET CIV0502 FOR DETAILS.
- 13 NEW CROSSWALK MARKING PER DC/DDOT STANDARDS AND SPECIFICATIONS.
- 14 EXISTING STREET TREE TO REMAIN.
- 15 NEW BRICK SIDEWALK. SEE SHEET C6 FOR DETAILS.
- 16 NEW GRANITE CURB AND CONCRETE GUTTER PER DC/DDOT STANDARDS AND SPECIFICATIONS. SEE SHEET C6 FOR DETAILS.
- 17 NEW FENCE. REFER TO LANDSCAPE PLAN FOR DETAILS.
- 18 NEW BIKE RACK. REFER TO LANDSCAPE PLAN FOR DETAILS.
- 19 NEW ORNAMENTAL TREE PER DC/DDOT UFA STANDARDS AND SPECIFICATIONS. REFER TO LANDSCAPE PLANS FOR DETAILS.



8<sup>TH</sup> & O STREETS, N.W.



WASHINGTON, DC

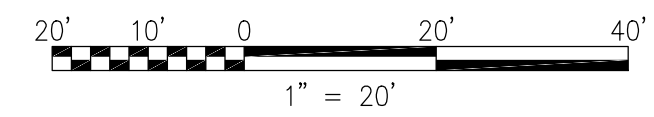
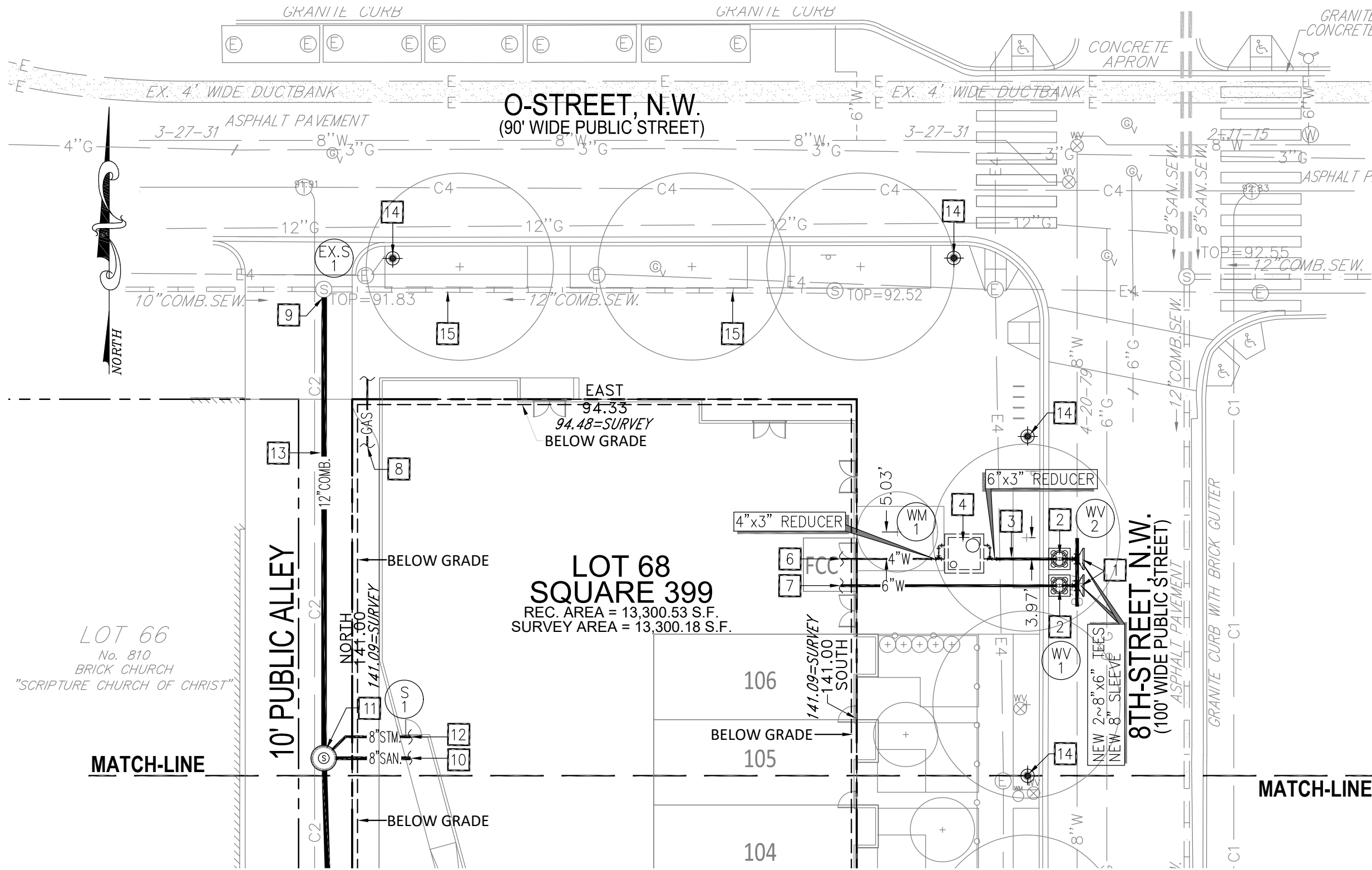
May 5<sup>th</sup>, 2017

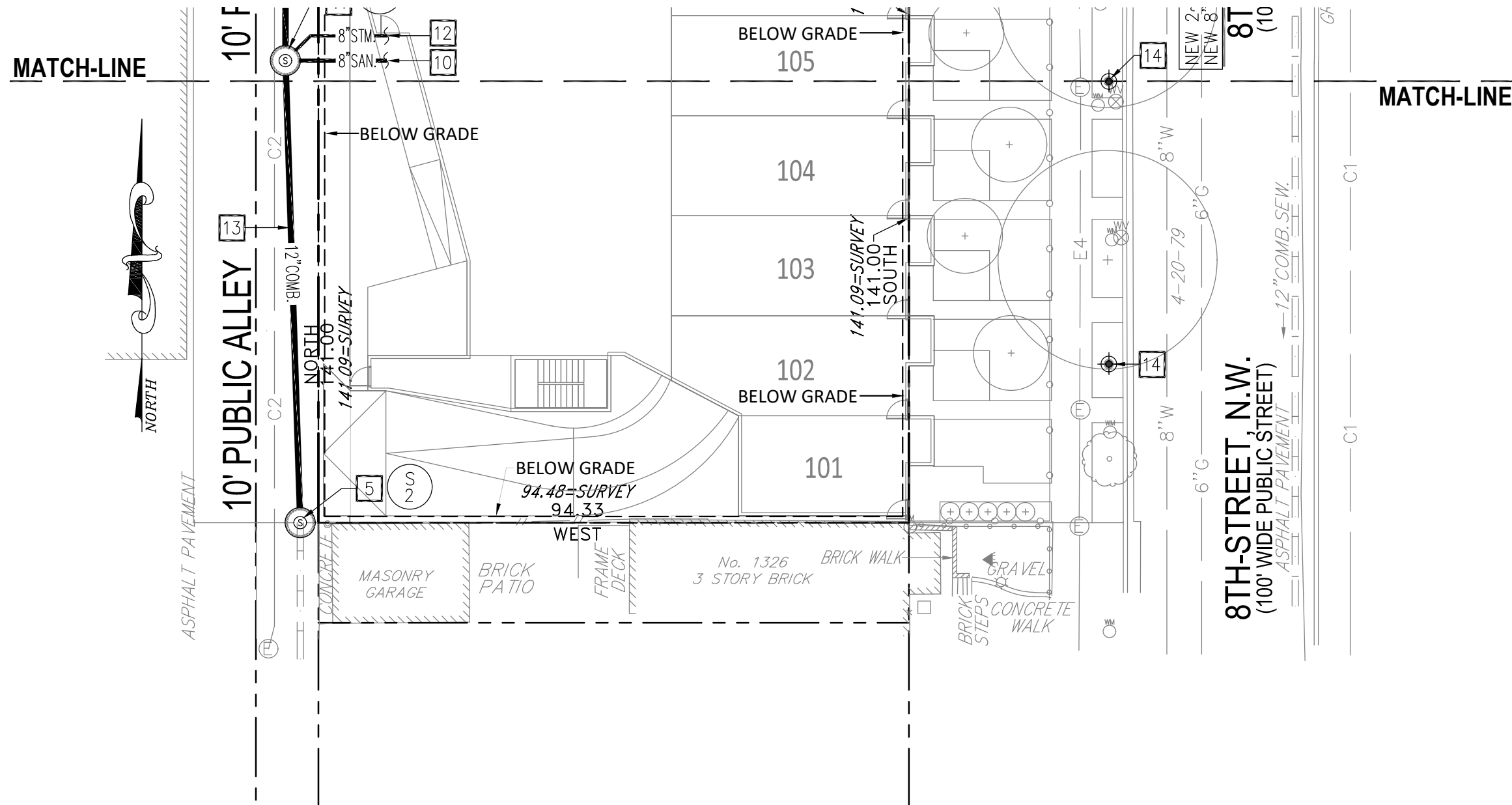
PUD Re-submission

copyright, ©2016 | sba, PC

Site Plan architects

shalom baranes associates C3-02



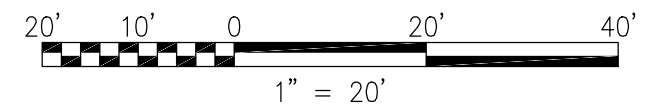


**UTILITY KEYNOTES:**

- 1 NEW CONCRETE THRUST BLOCK PER DC/WATER STANDARDS AND SPECIFICATIONS. REFER TO DC/WATER STANDARD DETAIL W-40.01.
- 2 NEW 6" WATER VALVE WITH 4.0' CASING PER DC/WATER STANDARDS AND SPECIFICATIONS. REFER TO DC/WATER STANDARD DETAIL W-20.01.
- 3 NEW 6" DIP CLASS 52 DOMESTIC WATER SERVICE LATERAL PER DC/WATER STANDARDS AND SPECIFICATIONS.
- 4 NEW 72"x72"x72" CAST-IN-PLACE WATER METER VAULT PER DC/WATER STANDARDS AND SPECIFICATIONS. REFER TO DC/WATER STANDARD DETAIL DG-23.01.
- 5 NEW PRECAST CONCRETE MANHOLE OVER EXISTING 10" THRU 21" DIAMETER SEWER WITH CAST-IN-PLACE CONCRETE BASE PER DC/WATER STANDARDS AND SPECIFICATIONS. REFER TO DC/WATER STANDARD DETAIL S-20.11.
- 6 NEW 4" DIP CLASS 52 DOMESTIC WATER SERVICE LATERAL PER DC/WATER STANDARDS AND SPECIFICATIONS. BACKFLOW PREVENTER ASSEMBLY TO MEET ASSE-1015.
- 7 NEW 6" DIP CLASS 52 FIRE SERVICE LATERAL PER DC/WATER STANDARDS AND SPECIFICATIONS. BACKFLOW PREVENTER ASSEMBLY TO MEET ASSE-1048.
- 8 NEW GAS SERVICE. REFER TO DRY UTILITY CONSULTANT DRAWINGS. COORDINATE REQUIREMENTS WITH WASHINGTON GAS.
- 9 NEW CONNECTION TO EXISTING MANHOLE.
- 10 NEW 8" PVC SCH-40 SANITARY SEWER LATERAL.
- 11 NEW PRECAST CONCRETE MANHOLE FOR NEW 10" THRU 21" DIAMETER SEWER (48" DIAMETER PRECAST BASE) PER DC/WATER STANDARDS AND SPECIFICATIONS. REFER TO DC/WATER STANDARD DETAIL S-20.01.
- 12 NEW PRIVATE 8" PVC SCH-40 STORM SEWER PIPE.
- 13 NEW 12" PVC SCH-40 COMBINED SEWER LATERAL PER DC/WATER STANDARDS AND SPECIFICATIONS.
- 14 NEW NO. 16 WASHINGTON GLOBE STREETLIGHT PER STREETLIGHT DIVISION STANDARDS AND SPECIFICATIONS. COORDINATE REQUIREMENTS WITH MR. ALI ZAMANI.
- 15 EXISTING SEWER TO BE LINED OR REPLACED TO THE EXTENT NECESSARY PER DC WATER STANDARDS AND SPECIFICATIONS AS DETERMINED BY CCTV INSPECTION.

**NOTE:**

ELECTRICAL POWER WILL BE COMING FROM THE EXISTING VAULTS ON THE NORTH SIDE OF O-STREET





<p><b>DETAIL 1 - STABILIZED CONSTRUCTION ENTRANCE</b></p> <p><b>CONSTRUCTION SPECIFICATIONS</b></p> <ol style="list-style-type: none"> <li>LENGTH - MINIMUM OF 50' (50' FOR SINGLE LANE LOT).</li> <li>WIDTH - 10' MINIMUM SHOULD BE PLACED AT THE EXISTING ROAD TO PROVIDE A TURNING RADIUS.</li> <li>GEOTEXTILE FABRIC (FILTER CLOTH) SHALL BE PLACED OVER THE EXISTING GROUND PRIOR TO PLACING STONE. THE PLAN APPROVAL AUTHORITY MAY NOT REQUIRE SINGLE FAMILY RESIDENCES TO USE GEOTEXTILE.</li> <li>STONE - CRUSHED AGGREGATE (2" TO 3") OR RECLAIMED OR RECYCLED CONCRETE EQUIVALENT SHALL BE PLACED AT LEAST 6" DEEP OVER THE LENGTH AND WIDTH OF THE ENTRANCE.</li> <li>SURFACE WATER - ALL SURFACE WATER FLOWING TO OR DIVERTED TOWARD CONSTRUCTION ENTRANCES SHALL BE PIPED THROUGH THE ENTRANCE, MAINTAINING POSITIVE DRAINAGE. PIPE INSTALLED THROUGH THE STABILIZED CONSTRUCTION ENTRANCE SHALL BE PROTECTED WITH A MOUNTABLE BEAM WITH 2:1 SLOPES AND A MINIMUM OF 6" STONE OVER THE PIPE. WHEN THE SIZE IS LOCATED AT A HIGH SPOT AND HAS NO DRAINAGE TO DRAIN, A PIPE WILL NOT BE NECESSARY. PIPE SHOULD BE SIZED ACCORDING TO THE AMOUNT OF RAINFALL TO CONVEYED. A 6" MINIMUM WILL BE REQUIRED. THE MOUNTABLE BEAM IS REQUIRED ON ALL SLOPS NOT LOCATED AT A HIGH SPOT.</li> <li>LOCATION - A STABILIZED CONSTRUCTION ENTRANCE SHALL BE LOCATED AT EVERY POINT WHERE CONSTRUCTION TRAFFIC ENTERS OR LEAVES A CONSTRUCTION SITE. VEHICLES LEAVING THE SITE MUST TRAVEL OVER THE ENTIRE LENGTH OF THE STABILIZED CONSTRUCTION ENTRANCE.</li> </ol> <p>U.S. DEPARTMENT OF AGRICULTURE NATURAL RESOURCE CONSERVATION SERVICE</p>	<p><b>DETAIL 4 - SILT FENCE</b></p> <p><b>CONSTRUCTION SPECIFICATIONS</b></p> <ol style="list-style-type: none"> <li>FENCE POSTS SHALL BE A MINIMUM OF 30" LONG DIAMETER WOOD POSTS SHALL BE 1/2" x 1/2" (SQUARE ONLY) CUT, OR 1 3/4" DIAMETER (RND) ROUND AND SHALL BE OF SOUND QUALITY HAWAIIAN LUMBER. STEEL POSTS SHALL BE STANDARD 1 OR 2 SECTION WIRE TIES NOT LESS THAN 100 POUND PER LINEAR FOOT.</li> <li>GEOTEXTILE SHALL BE FASTENED SECURELY TO EACH FENCE POST WITH WIRE TIES OR STAPLES AT TOP AND MID-SECTION AND SHALL MEET THE FOLLOWING REQUIREMENTS FOR GEOTEXTILE CLASS F.</li> </ol> <p>U.S. DEPARTMENT OF AGRICULTURE NATURAL RESOURCE CONSERVATION SERVICE</p>	<p><b>DETAIL 6A - STANDARD INLET PROTECTION</b></p> <p><b>CONSTRUCTION SPECIFICATIONS</b></p> <ol style="list-style-type: none"> <li>EXCAVATE COMPLETELY AROUND THE INLET TO A DEPTH OF 18" BELOW THE NOTCH ELEVATION.</li> <li>DRIVE THE 2" x 4" CONSTRUCTION GRADE LAMBER POSTS 1" INTO THE GROUND AT EACH CORNER OF THE INLET. PLACE NAIL STRIPS BETWEEN THE POSTS ON THE ENDS OF THE INLET. ASSEMBLE THE TOP PORTION OF THE 2" x 4" FRAME USING THE OVERLAP JOINT SHOWN ON DETAIL 6B. THE FRAME ("NEST") MUST BE 6" BELOW ADJACENT EXISTING FINISHED FLOORING AND SAFETY ISOLATE MAT.</li> <li>STRETCH THE 1/2" x 1/2" WIRE MESH TIGHTLY AROUND THE FRAME AND FASTEN SECURELY. THE ENDS MUST MEET AND OVERLAP AT A POST.</li> <li>STRETCH THE GEOTEXTILE CLASS E TIGHTLY OVER THE WIRE MESH WITH THE GEOTEXTILE EXTENDING FROM THE TOP OF THE FRAME TO 18" BELOW THE INLET NOTCH ELEVATION. FASTEN THE GEOTEXTILE TO THE FRAME. THE ENDS OF THE GEOTEXTILE MUST MEET AT A POST. BE OVERLAPPED AND FOLDED THAN FASTENING DOWN.</li> <li>BACKFILL AROUND THE INLET IN COMPACTING 4" LAYERS UNTIL THE LAYER OF EARTH IS LEVEL WITH THE NOTCH ELEVATION ON THE ENDS AND TOP ELEVATION ON THE SIDES.</li> <li>IF THE INLET IS NOT IN A SUMP, CONSTRUCT A COMPACTED EARTH DIKE ACROSS THE DITCH LINE DIRECTLY BELOW IT. THE TOP OF THE EARTH DIKE SHOULD BE AT LEAST 4" HIGHER THAN THE TOP OF THE FRAME.</li> <li>THE STRUCTURE MUST BE INSPECTED PERIODICALLY AND AFTER EACH RAIN AND THE GEOTEXTILE REPLACED WHEN IT BECOMES CLOTTED.</li> </ol> <p>U.S. DEPARTMENT OF AGRICULTURE NATURAL RESOURCE CONSERVATION SERVICE</p>	<p><b>DETAIL 6B - AT GRADE INLET PROTECTION</b></p> <p><b>CONSTRUCTION SPECIFICATIONS</b></p> <ol style="list-style-type: none"> <li>LEFT GRATE AND WAP WITH GEOTEXTILE CLASS E TO COMPLETELY COVER ALL OPENINGS. THEN SET GRATE BACK IN PLACE.</li> <li>PLACE 3/4" x 1 1/2" STONE, 4"-6" THICK ON THE GRATE TO SECURE THE FABRIC AND PROVIDE ADDITIONAL FILLING.</li> </ol> <p>U.S. DEPARTMENT OF AGRICULTURE NATURAL RESOURCE CONSERVATION SERVICE</p>	<p><b>DETAIL 6C - CURB INLET PROTECTION (COG OR COS INLETS)</b></p> <p><b>CONSTRUCTION SPECIFICATIONS</b></p> <ol style="list-style-type: none"> <li>ATTACH A CONTINUOUS PIECE OF WIRE MESH (8" MINIMUM WIDTH BY THROAT LENGTH PLUS 4") TO THE 2" x 4" WIRE MESH AND SECURELY ATTACH IT TO THE 2" x 4" WIRE.</li> <li>PLACE A CONTINUOUS PIECE OF GEOTEXTILE CLASS E THE SAME DIMENSIONS AS THE WIRE MESH OVER THE WIRE MESH AND SECURELY ATTACH IT TO THE 2" x 4" WIRE.</li> <li>SECURELY NAIL THE 2" x 4" WIRE TO A 6" LONG VERTICAL SPACER TO BE LOCATED BETWEEN THE WIRE AND THE INLET FACE (MAX. 4" APART).</li> <li>PLACE THE ASSEMBLY AGAINST THE INLET THROAT AND NAIL (MINIMUM 2" LENGTHS OF 2" x 4" TO THE TOP OF THE WIRE SPACER LOCATIONS). THESE 2" x 4" ANCHORS SHALL EXTEND ACROSS THE INLET TOP AND BE HELD IN PLACE BY SANDBAGS OR ALTERNATIVE MEANS.</li> <li>THE ASSEMBLY SHALL BE PLACED SO THAT THE END ENDS ARE A MINIMUM 1' BEYOND BOTH SIDES OF THE THROAT OPENING.</li> <li>FORM THE 1/2" x 1/2" WIRE MESH AND THE GEOTEXTILE FABRIC TO THE CONCRETE OUTER AND AGAINST THE FACE OF THE CURB ON BOTH SIDES OF THE INLET. PLACE CLEAN 3/4" x 1 1/2" STONE OVER THE WIRE MESH AND GEOTEXTILE IN SUCH A MANNER TO PREVENT WATER FROM ENTERING THE INLET UNDER OR AROUND THE GEOTEXTILE.</li> <li>WHEN TYPE OF PROTECTION MUST BE IDENTIFIED PROMINENTLY AND THE FILTER CLOTH AND STONE REPLACED WHEN CLOTTED WITH DEBRIS.</li> <li>ASSURE THAT THE STORM FLOW DOES NOT BYPASS THE INLET BY INSTALLING A TEMPORARY EARTH OR ASPHALT DIKE TO DIRECT THE FLOW TO THE INLET.</li> </ol> <p>U.S. DEPARTMENT OF AGRICULTURE NATURAL RESOURCE CONSERVATION SERVICE</p>	<p><b>DETAIL 6E - AT GRADE INLET GUARD</b></p> <p><b>CONSTRUCTION SPECIFICATIONS</b></p> <ol style="list-style-type: none"> <li>THE TOP MEASUREMENT OF 7-1/2" IS SET TO PROVIDE A 2" EXTENSION FOR OVERFLOW WHILE AVOIDING BLOCKAGE OF THE MANHOLE COVER.</li> <li>MAKE A WATERSTOP CONNECTION ALONG THE SIDES AND BOTTOM OF THE INLET GUARD WITH THE STREET AND CURB.</li> </ol> <p>U.S. DEPARTMENT OF AGRICULTURE NATURAL RESOURCE CONSERVATION SERVICE</p>
<p><b>DETAIL 9 - EARTH DIKE</b></p> <p><b>CONSTRUCTION SPECIFICATIONS</b></p> <ol style="list-style-type: none"> <li>SEED AND COVER WITH SOIL STABILIZATION MATTING OR LINE WITH SOIL. 4" x 7" STONE OR RECYCLED CONCRETE EQUIVALENT PRESSED INTO THE SOIL 7" MINIMUM.</li> <li>TEMPORARY EARTH DIKES SHALL HAVE AN UNIMPROVED POSITIVE GRADE TO AN OUTLET. SPOT ELEVATIONS MAY BE NECESSARY FOR GRADUES LESS THAN 1%.</li> <li>RUNOFF DIVERTED FROM A DISTURBED AREA SHALL BE CONVEYED TO A SEDIMENT TRAPPING DEVICE.</li> <li>RUNOFF DIVERTED FROM AN UNDISTURBED AREA SHALL OUTLET DIRECTLY INTO AN UNDISTURBED, STABILIZED AREA AT A NON-EROSIVE VELOCITY.</li> <li>ALL TREES, BRUSH, STAMPS, OBSTRUCTIONS, AND OTHER OBJECTIONABLE MATERIAL SHALL BE REMOVED AND DISPOSED OF SO AS NOT TO INTERFERE WITH THE PROPER FUNCTIONING OF THE DIKE.</li> <li>THE DIKE SHALL BE EXCAVATED OR SHAPED TO LINE, GRADE, AND CROSS-SECTION AS REQUIRED TO MEET THE CRITERIA SPECIFIED HEREIN AND BE FREE OF BANK PROJECTIONS OR OTHER IRREGULARITIES WHICH WILL IMPAIR NORMAL FLOW.</li> <li>FILL SHALL BE COMPACTED BY EARTH MOVING EQUIPMENT.</li> <li>ALL EARTH REMOVED AND NOT NEEDED FOR CONSTRUCTION SHALL BE PLACED SO THAT IT WILL NOT INTERFERE WITH THE FUNCTIONING OF THE DIKE.</li> <li>INSPECTION AND MAINTENANCE MUST BE PROVIDED PERIODICALLY AND AFTER EACH RAIN EVENT.</li> </ol> <p>U.S. DEPARTMENT OF AGRICULTURE NATURAL RESOURCE CONSERVATION SERVICE</p>	<p><b>DETAIL 11 - PERIMETER DIKE / SWALE</b></p> <p><b>CONSTRUCTION SPECIFICATIONS</b></p> <ol style="list-style-type: none"> <li>ALL FORMER DIRT/SWALES SHALL HAVE AN UNIMPROVED POSITIVE GRADE TO AN OUTLET. SPOT ELEVATIONS MAY BE NECESSARY FOR GRADUES LESS THAN 1%.</li> <li>RUNOFF DIVERTED FROM A DISTURBED AREA SHALL BE CONVEYED TO A SEDIMENT TRAPPING DEVICE.</li> <li>RUNOFF DIVERTED FROM AN UNDISTURBED AREA SHALL OUTLET INTO AN UNDISTURBED, STABILIZED AREA AT A NON-EROSIVE VELOCITY.</li> <li>ALL TREES, BRUSH, STAMPS, OBSTRUCTIONS, AND OTHER OBJECTIONABLE MATERIAL SHALL BE REMOVED AND DISPOSED OF SO AS NOT TO INTERFERE WITH THE PROPER FUNCTIONING OF THE DIKE.</li> <li>THE DIKE SHALL BE EXCAVATED OR SHAPED TO LINE, GRADE, AND CROSS-SECTION AS REQUIRED TO MEET THE CRITERIA SPECIFIED IN THE STANDARD.</li> <li>FILL SHALL BE COMPACTED BY EARTH MOVING EQUIPMENT.</li> <li>STABILIZATION WITH SEED AND MULCH OR AS SPECIFIED OF THE AREA DISTURBED BY THE DIKE AND SWALE SHALL BE COMPLETED WITHIN 7 DAYS UPON REMOVAL.</li> <li>INSPECTION AND MAINTENANCE SHALL BE PROVIDED AFTER EACH RAIN EVENT.</li> <li>NOTE: THE MAXIMUM DRAINAGE FOR THIS PRACTICE IS 2 ACRES.</li> </ol> <p>U.S. DEPARTMENT OF AGRICULTURE NATURAL RESOURCE CONSERVATION SERVICE</p>	<p><b>DETAIL 12 - PIPE OUTLET SEDIMENT TRAP - ST I</b></p> <p><b>CONSTRUCTION SPECIFICATIONS</b></p> <ol style="list-style-type: none"> <li>THE AREA UNDER THE EMBANKMENT SHALL BE CLEARED, GRUBBED AND STRIPPED OF ANY VEGETATION AND ROOT MAT. THE POOL AREA SHALL BE CLEARED.</li> <li>THE FILL MATERIAL FOR THE EMBANKMENT SHALL BE FREE OF ROOTS OR OTHER WOODY VEGETATION AS WELL AS OVER-SIZED STONES, ROCKS, ORGANIC MATERIAL OR OTHER OBJECTIONABLE MATERIAL. THE EMBANKMENT SHALL BE COMPACTED BY TRAVELING WITH EQUIPMENT WHILE IT IS BEING CONSTRUCTED.</li> <li>THE TOTAL VOLUME AS MEASURED FROM THE BOTTOM TO RISER CREST ELEVATION SHALL BE 3000 CUBIC FEET PER ACRE OF DRAINAGE AREA (SEE TABLE 1). THE TOP OF EMBANKMENT MUST BE 2' ABOVE THE RISER CREST ELEVATION.</li> <li>SEDIMENT SHALL BE REMOVED AND THE TRAP RESTORED TO ITS ORIGINAL DIMENSIONS WHEN THE SEDIMENT HAS ACCUMULATED TO ONE HALF OF THE NET STORAGE DEPTH OF THE TRAP (DOO OF FACE). THE SEDIMENT SHALL BE DEPOSITED IN A SUITABLE AREA AND IN SUCH A MANNER THAT IT WILL NOT ERODE.</li> <li>THE STRUCTURE SHALL BE INSPECTED PERIODICALLY AND AFTER EACH RAIN AND REPAIRED.</li> </ol> <p>U.S. DEPARTMENT OF AGRICULTURE NATURAL RESOURCE CONSERVATION SERVICE</p>	<p><b>PIPE OUTLET SEDIMENT TRAP - ST I</b></p> <p><b>CONSTRUCTION SPECIFICATIONS</b></p> <ol style="list-style-type: none"> <li>CONSTRUCTION OPERATIONS SHALL BE CARRIED OUT IN SUCH A MANNER THAT EROSION AND WATER POLLUTION ARE ABATED. ONCE CONSTRUCTED, THE TOP AND OUTSIDE FACE OF THE EMBANKMENT SHALL BE STABILIZED WITH SEED AND MULCH. POINTS OF CONCENTRATED INFLOW SHALL BE PROTECTED IN ACCORDANCE WITH GRADE STABILIZATION STRUCTURE CRITERIA. THE REMAINDER OF THE INTERIOR SLOPES SHOULD BE STABILIZED (ONE TIME) WITH SEED AND MULCH UPON TRAP COMPLETION AND MONITORED AND MAINTAINED EROSION FREE USING THE LIFE OF THE TRAP.</li> <li>THE STRUCTURE SHALL BE REMOVED AND AREA STABILIZED WHEN THE DRAINAGE AREA HAS BEEN PROPERLY STABILIZED.</li> <li>ALL OUT AND FILL SLOPES SHALL BE 2:1 OR FLATTER.</li> <li>ALL PIPE CONNECTIONS SHALL BE WATERTIGHT.</li> <li>ADVERSE NET STORAGE ELEVATION, THE RISER SHALL BE PERFORATED WITH 1/2" DIA. BY 6" LONG SLOTS OR 1" DIA. HOLES SPACED 8" VERTICALLY AND HORIZONTALLY. NO PERFORATIONS WILL BE ALLOWED WITHIN 6" OF THE HORIZONTAL BARENET.</li> <li>THE RISER SHALL BE WRAPPED WITH 1/2" HARDWARE CLOTH (WIRE) THEN WRAPPED WITH GEOTEXTILE CLASS E. THE FILTER CLOTH SHALL EXTEND 4" ABOVE THE HIGHEST SLIT AND 6" BELOW THE LOWEST SLIT. WHERE ENDS OF FILTER CLOTH MEET, THEY SHALL BE OVERLAPPED, FOLDED AND FASTENED TO PREVENT BYPASS. FILTER CLOTH SHALL BE REPLACED AS NECESSARY TO PREVENT CLOGGING.</li> <li>STRIPS OR CONNECTING BANDS SHALL BE USED TO HOLD THE FILTER CLOTH AND WIRE FABRIC IN PLACE. THEY SHALL BE PLACED AT THE TOP AND BOTTOM OF THE CLOTH.</li> <li>FILL MATERIAL AROUND THE PIPE SPILLWAY SHALL BE HAND COMPACTED IN 4" LAYERS. A MINIMUM OF 2' OF HAND-COMPACTED BACKFILL SHALL BE PLACED OVER THE PIPE SPILLWAY BEFORE CROSSING IT WITH CONSTRUCTION EQUIPMENT.</li> <li>THE RISER SHALL BE ANCHORED WITH OTHER A CONCRETE BASE OR STEEL PLATE BASE TO PREVENT FLOTATION. CONCRETE BASES SHALL BE AT LEAST TWICE THE RISER DIAMETER, 1/4" MINIMUM THICKNESS AND ATTACHED TO THE BOTTOM OF THE RISER BY A CONTINUOUS WELD TO FORM A WATER-TIGHT CONNECTION. THEN PLACE 2" OF STONE, GRAVEL OR SAND ON LENGTH ON THE PLATE.</li> <li>WITH SEED DETAILS 7 AND 15.</li> </ol> <p>U.S. DEPARTMENT OF AGRICULTURE NATURAL RESOURCE CONSERVATION SERVICE</p>	<p><b>DETAIL 13 - STONE OUTLET SEDIMENT TRAP - ST II</b></p> <p><b>CONSTRUCTION SPECIFICATIONS</b></p> <ol style="list-style-type: none"> <li>AREA UNDER EMBANKMENT SHALL BE CLEARED, GRUBBED AND STRIPPED OF ANY VEGETATION AND ROOT MAT. THE POOL AREA SHALL BE CLEARED.</li> <li>THE FILL MATERIAL FOR THE EMBANKMENT SHALL BE FREE OF ROOTS AND OTHER WOODY VEGETATION AS WELL AS OVER-SIZED STONES, ROCKS, ORGANIC MATERIAL OR OTHER OBJECTIONABLE MATERIAL. THE EMBANKMENT SHALL BE COMPACTED BY TRAVELING WITH EQUIPMENT WHILE IT IS BEING CONSTRUCTED.</li> <li>ALL OUT AND FILL SLOPES SHALL BE 2:1 OR FLATTER.</li> <li>THE STONE USED IN THE OUTLET SHALL BE SMALL RIP-RAP 4" TO 7" IN SIZE WITH A 1" THICK LAYER OF 3/4" TO 1 1/2" WASHED AGGREGATE PLACED ON THE UPSTREAM FACE OF THE OUTLET STONE. STONE SHALL BE PLACED IN SUCH A MANNER TO PREVENT CLOGGING. GEOTEXTILE CLASS E SHALL BE SUBSTITUTED FOR THE STONE FACING BY PLACING IT ON THE INSIDE FACE OF THE STONE OUTLET.</li> <li>SEDIMENT SHALL BE REMOVED AND TRAP RESTORED TO ITS ORIGINAL DIMENSIONS WHEN THE SEDIMENT HAS ACCUMULATED TO ONE HALF OF THE NET STORAGE DEPTH OF THE TRAP. REMOVED SEDIMENT SHALL BE DEPOSITED IN A SUITABLE AREA AND IN SUCH A MANNER THAT IT WILL NOT ERODE.</li> </ol> <p>U.S. DEPARTMENT OF AGRICULTURE NATURAL RESOURCE CONSERVATION SERVICE</p>	<p><b>STONE OUTLET SEDIMENT TRAP - ST II</b></p> <p><b>CONSTRUCTION SPECIFICATIONS</b></p> <ol style="list-style-type: none"> <li>THE STRUCTURE SHALL BE INSPECTED PERIODICALLY AND AFTER EACH RAIN AND REPAIRS MADE AS NEEDED.</li> <li>CONSTRUCTION OF TRAPS SHALL BE CARRIED OUT IN SUCH A MANNER THAT SEDIMENT POLLUTION IS ABATED. ONCE CONSTRUCTED, THE TOP AND OUTSIDE FACE OF THE EMBANKMENT SHALL BE STABILIZED WITH SEED AND MULCH. POINTS OF CONCENTRATED INFLOW SHALL BE PROTECTED IN ACCORDANCE WITH GRADE STABILIZATION STRUCTURE CRITERIA. THE REMAINDER OF THE INTERIOR SLOPES SHOULD BE STABILIZED (ONE TIME) WITH SEED AND MULCH UPON TRAP COMPLETION AND MONITORED AND MAINTAINED EROSION FREE DURING THE LIFE OF THE TOP.</li> <li>THE STRUCTURE SHALL BE DEMATERED BY APPROVED METHODS, REMOVED AND THE AREA STABILIZED WHEN THE DRAINAGE AREA HAS BEEN PROPERLY STABILIZED.</li> <li>REFER TO SECTION 9 FOR SPECIFICATIONS CONCERNING TRAP DEMATERING.</li> <li>MINIMUM TRAP DEPTH SHALL BE MEASURED FROM THE NEAR ELEVATION.</li> <li>THE ELEVATION OF THE TOP OF ANY DIKE DIRECTING WATER INTO THE TRAP MUST EQUAL OR EXCEED THE ELEVATION OF THE TRAP EMBANKMENT.</li> <li>GEOTEXTILE CLASS E SHALL BE PLACED OVER THE BOTTOM AND SIDES OF THE OUTLET CHANNEL PRIOR TO THE PLACEMENT OF STONE. SECTIONS OF FILTER CLOTH MUST OVERLAP AT LEAST 1' WITH THE SECTION NEAREST THE DRAINAGE PLACED ON TOP. THE FILTER CLOTH SHALL BE EMBEDDED AT LEAST 6" INTO EXISTING GROUND AT THE ENTRANCE OF THE OUTLET CHANNEL.</li> <li>OUTLET - AN OUTLET SHALL BE PROVIDED, INCLUDING A MEANS OF CONVEYING THE DISCHARGE IN AN EROSION FREE MANNER TO AN EXISTING STABLE CHANNEL.</li> </ol> <p>U.S. DEPARTMENT OF AGRICULTURE NATURAL RESOURCE CONSERVATION SERVICE</p>
<p><b>DETAIL 14 - RIP-RAP OUTLET SEDIMENT TRAP - ST III</b></p> <p><b>CONSTRUCTION SPECIFICATIONS</b></p> <ol style="list-style-type: none"> <li>THE AREA UNDER EMBANKMENT SHALL BE CLEARED, GRUBBED AND STRIPPED OF ANY VEGETATION AND ROOT MAT. THE POOL AREA SHALL BE CLEARED.</li> <li>THE FILL MATERIAL FOR THE EMBANKMENT SHALL BE FREE OF ROOTS OR OTHER WOODY VEGETATION AS WELL AS OVER-SIZED STONES, ROCKS, ORGANIC MATERIAL OR OTHER OBJECTIONABLE MATERIAL. THE EMBANKMENT SHALL BE COMPACTED BY TRAVELING WITH EQUIPMENT WHILE IT IS BEING CONSTRUCTED. MAXIMUM HEIGHT OF EMBANKMENT SHALL BE 4', MEASURED AT CENTRAL LINE OF EMBANKMENT.</li> <li>ALL OUT AND FILL SLOPES SHALL BE 2:1 OR FLATTER.</li> <li>ELEVATION OF THE TOP OF ANY DIKE DIRECTING WATER INTO TRAP MUST EQUAL OR EXCEED THE HEIGHT OF TRAP EMBANKMENT.</li> <li>STORAGE AREA PROVIDED SHALL BE FILLED BY COMPUTING THE VOLUME MEASURED FROM TOP OF EXCAVATION. (FOR STORAGE REQUIREMENTS SEE TABLE 12).</li> <li>FILTER CLOTH SHALL BE PLACED OVER THE BOTTOM AND SIDES OF THE OUTLET CHANNEL PRIOR TO PLACEMENT OF STONE. SECTION OF FABRIC MUST OVERLAP AT LEAST 1' WITH SECTION NEAREST THE ENTRANCE PLACED ON TOP. FABRIC SHALL BE EMBEDDED AT LEAST 6" INTO EXISTING GROUND AT ENTRANCE OF OUTLET CHANNEL.</li> <li>STONE USED IN THE OUTLET CHANNEL SHALL BE 4" - 12" PLACED 18" THICK.</li> <li>OUTLET - AN OUTLET SHALL BE PROVIDED, WHICH INCLUDES A MEANS OF CONVEYING THE DISCHARGE IN AN EROSION FREE MANNER TO AN EXISTING STABLE CHANNEL. PROTECTION AGAINST SQUAR AT THE DISCHARGE END SHALL BE PROVIDED AS NECESSARY.</li> <li>OUTLET CHANNEL MUST HAVE POSITIVE DRAINAGE FROM THE TRAP.</li> <li>SEDIMENT SHALL BE REMOVED AND TRAP RESTORED TO ITS ORIGINAL DIMENSIONS WHEN THE SEDIMENT HAS ACCUMULATED TO 1/4 OF THE NET STORAGE DEPTH OF THE TRAP (1500 cu/ft). REMOVED SEDIMENT SHALL BE DEPOSITED IN A SUITABLE AREA AND IN SUCH A MANNER THAT IT WILL NOT ERODE.</li> <li>THE STRUCTURE SHALL BE INSPECTED PERIODICALLY AND AFTER EACH RAIN AND REPAIRED AS NEEDED.</li> <li>CONSTRUCTION OF TRAPS SHALL BE CARRIED OUT IN SUCH A MANNER THAT SEDIMENT POLLUTION IS ABATED. ONCE CONSTRUCTED, THE TOP AND OUTSIDE FACE OF THE EMBANKMENT SHALL BE STABILIZED WITH SEED AND MULCH. POINTS OF CONCENTRATED INFLOW SHALL BE PROTECTED IN ACCORDANCE WITH GRADE STABILIZATION STRUCTURE CRITERIA. THE REMAINDER OF THE INTERIOR SLOPES SHOULD BE STABILIZED (ONE TIME) WITH SEED AND MULCH UPON TRAP COMPLETION AND MONITORED AND MAINTAINED EROSION FREE DURING THE LIFE OF THE TRAP.</li> <li>THE STRUCTURE SHALL BE DEMATERED BY APPROVED METHODS, REMOVED AND THE AREA STABILIZED WHEN THE DRAINAGE AREA HAS BEEN PROPERLY STABILIZED.</li> </ol> <p>U.S. DEPARTMENT OF AGRICULTURE NATURAL RESOURCE CONSERVATION SERVICE</p>	<p><b>RIP-RAP OUTLET SEDIMENT TRAP - ST III</b></p> <p><b>CONSTRUCTION SPECIFICATIONS</b></p> <ol style="list-style-type: none"> <li>THE AREA UNDER EMBANKMENT SHALL BE CLEARED, GRUBBED AND STRIPPED OF ANY VEGETATION AND ROOT MAT. THE POOL AREA SHALL BE CLEARED.</li> <li>THE FILL MATERIAL FOR THE EMBANKMENT SHALL BE FREE OF ROOTS OR OTHER WOODY VEGETATION AS WELL AS OVER-SIZED STONES, ROCKS, ORGANIC MATERIAL OR OTHER OBJECTIONABLE MATERIAL. THE EMBANKMENT SHALL BE COMPACTED BY TRAVELING WITH EQUIPMENT WHILE IT IS BEING CONSTRUCTED. MAXIMUM HEIGHT OF EMBANKMENT SHALL BE 4', MEASURED AT CENTRAL LINE OF EMBANKMENT.</li> <li>ALL OUT AND FILL SLOPES SHALL BE 2:1 OR FLATTER.</li> <li>ELEVATION OF THE TOP OF ANY DIKE DIRECTING WATER INTO TRAP MUST EQUAL OR EXCEED THE HEIGHT OF TRAP EMBANKMENT.</li> <li>STORAGE AREA PROVIDED SHALL BE FILLED BY COMPUTING THE VOLUME MEASURED FROM TOP OF EXCAVATION. (FOR STORAGE REQUIREMENTS SEE TABLE 12).</li> <li>FILTER CLOTH SHALL BE PLACED OVER THE BOTTOM AND SIDES OF THE OUTLET CHANNEL PRIOR TO PLACEMENT OF STONE. SECTION OF FABRIC MUST OVERLAP AT LEAST 1' WITH SECTION NEAREST THE ENTRANCE PLACED ON TOP. FABRIC SHALL BE EMBEDDED AT LEAST 6" INTO EXISTING GROUND AT ENTRANCE OF OUTLET CHANNEL.</li> <li>STONE USED IN THE OUTLET CHANNEL SHALL BE 4" - 12" PLACED 18" THICK.</li> <li>OUTLET - AN OUTLET SHALL BE PROVIDED, WHICH INCLUDES A MEANS OF CONVEYING THE DISCHARGE IN AN EROSION FREE MANNER TO AN EXISTING STABLE CHANNEL. PROTECTION AGAINST SQUAR AT THE DISCHARGE END SHALL BE PROVIDED AS NECESSARY.</li> <li>OUTLET CHANNEL MUST HAVE POSITIVE DRAINAGE FROM THE TRAP.</li> <li>SEDIMENT SHALL BE REMOVED AND TRAP RESTORED TO ITS ORIGINAL DIMENSIONS WHEN THE SEDIMENT HAS ACCUMULATED TO 1/4 OF THE NET STORAGE DEPTH OF THE TRAP (1500 cu/ft). REMOVED SEDIMENT SHALL BE DEPOSITED IN A SUITABLE AREA AND IN SUCH A MANNER THAT IT WILL NOT ERODE.</li> <li>THE STRUCTURE SHALL BE INSPECTED PERIODICALLY AND AFTER EACH RAIN AND REPAIRED AS NEEDED.</li> <li>CONSTRUCTION OF TRAPS SHALL BE CARRIED OUT IN SUCH A MANNER THAT SEDIMENT POLLUTION IS ABATED. ONCE CONSTRUCTED, THE TOP AND OUTSIDE FACE OF THE EMBANKMENT SHALL BE STABILIZED WITH SEED AND MULCH. POINTS OF CONCENTRATED INFLOW SHALL BE PROTECTED IN ACCORDANCE WITH GRADE STABILIZATION STRUCTURE CRITERIA. THE REMAINDER OF THE INTERIOR SLOPES SHOULD BE STABILIZED (ONE TIME) WITH SEED AND MULCH UPON TRAP COMPLETION AND MONITORED AND MAINTAINED EROSION FREE DURING THE LIFE OF THE TRAP.</li> <li>THE STRUCTURE SHALL BE DEMATERED BY APPROVED METHODS, REMOVED AND THE AREA STABILIZED WHEN THE DRAINAGE AREA HAS BEEN PROPERLY STABILIZED.</li> </ol> <p>U.S. DEPARTMENT OF AGRICULTURE NATURAL RESOURCE CONSERVATION SERVICE</p>	<p><b>DETAIL 22 - SEDIMENT BASIN/TRAP BAFFLES</b></p> <p><b>CONSTRUCTION SPECIFICATIONS</b></p> <ol style="list-style-type: none"> <li>THE AREA UNDER EMBANKMENT SHALL BE CLEARED, GRUBBED AND STRIPPED OF ANY VEGETATION AND ROOT MAT. THE POOL AREA SHALL BE CLEARED.</li> <li>THE FILL MATERIAL FOR THE EMBANKMENT SHALL BE FREE OF ROOTS OR OTHER WOODY VEGETATION AS WELL AS OVER-SIZED STONES, ROCKS, ORGANIC MATERIAL OR OTHER OBJECTIONABLE MATERIAL. THE EMBANKMENT SHALL BE COMPACTED BY TRAVELING WITH EQUIPMENT WHILE IT IS BEING CONSTRUCTED.</li> <li>THE TOTAL VOLUME AS MEASURED FROM THE BOTTOM TO RISER CREST ELEVATION SHALL BE 3000 CUBIC FEET PER ACRE OF DRAINAGE AREA (SEE TABLE 1). THE TOP OF EMBANKMENT MUST BE 2' ABOVE THE RISER CREST ELEVATION.</li> <li>SEDIMENT SHALL BE REMOVED AND THE TRAP RESTORED TO ITS ORIGINAL DIMENSIONS WHEN THE SEDIMENT HAS ACCUMULATED TO ONE HALF OF THE NET STORAGE DEPTH OF THE TRAP (DOO OF FACE). THE SEDIMENT SHALL BE DEPOSITED IN A SUITABLE AREA AND IN SUCH A MANNER THAT IT WILL NOT ERODE.</li> <li>THE STRUCTURE SHALL BE INSPECTED PERIODICALLY AND AFTER EACH RAIN AND REPAIRED.</li> </ol> <p>U.S. DEPARTMENT OF AGRICULTURE NATURAL RESOURCE CONSERVATION SERVICE</p>	<p><b>DETAIL 34 - PORTABLE SEDIMENT TANK (HORIZONTAL)</b></p> <p><b>CONSTRUCTION SPECIFICATIONS</b></p> <ol style="list-style-type: none"> <li>THE FOLLOWING FORMULA SHOULD BE USED IN DETERMINING THE STORAGE VOLUME OF THE SEDIMENT TANK: 1 CUBIC FOOT OF STORAGE FOR EACH GALLON PER MINUTE OF PUMP DISCHARGE CAPACITY.</li> <li>AN EXAMPLE OF A TYPICAL SEDIMENT TANK IS SHOWN ABOVE. OTHER CONTAINER DESIGNS CAN BE USED IF THE STORAGE VOLUME IS ADEQUATE AND PROVISION IS OBTAINED FROM THE LOCAL APPROVING AGENCY.</li> <li>TANKS MAY BE CONNECTED IN SERIES.</li> </ol> <p>U.S. DEPARTMENT OF AGRICULTURE NATURAL RESOURCE CONSERVATION SERVICE</p>	<p><b>DETAIL 35 - PORTABLE SEDIMENT TANK (VERTICAL)</b></p> <p><b>CONSTRUCTION SPECIFICATIONS</b></p> <ol style="list-style-type: none"> <li>THE FOLLOWING FORMULA SHOULD BE USED IN DETERMINING THE STORAGE VOLUME OF THE SEDIMENT TANK: 1 CUBIC FOOT OF STORAGE FOR EACH GALLON PER MINUTE OF PUMP DISCHARGE CAPACITY.</li> <li>AN EXAMPLE OF A TYPICAL SEDIMENT TANK IS SHOWN ABOVE. OTHER CONTAINER DESIGNS CAN BE USED IF THE STORAGE VOLUME IS ADEQUATE AND PROVISION IS OBTAINED FROM THE LOCAL APPROVING AGENCY.</li> <li>TANKS MAY BE CONNECTED IN SERIES.</li> </ol> <p>U.S. DEPARTMENT OF AGRICULTURE NATURAL RESOURCE CONSERVATION SERVICE</p>	<p><b>DETAIL 74 - TREE PROTECTION</b></p> <p><b>CONSTRUCTION SPECIFICATIONS</b></p> <ol style="list-style-type: none"> <li>ALL PROTECTIVE FENCING SHALL EXTEND BEYOND THE TREE DROPLINE.</li> <li>ALL PROTECTIVE FENCING SHALL EXTEND BEYOND THE TREE DROPLINE.</li> <li>ALL PROTECTIVE FENCING SHALL EXTEND BEYOND THE TREE DROPLINE.</li> </ol> <p>U.S. DEPARTMENT OF AGRICULTURE NATURAL RESOURCE CONSERVATION SERVICE</p>