



ROOF TERRACE LANDSCAPE PLAN

L8







©2018 Torti Gallas Urban | 650 F Street, NW Suite 690 | Washington, DC | 202.232.3132

MASS. AVE. ALLEY ENTRANCE PERSPECTIVE SKETCH

10/16/2018

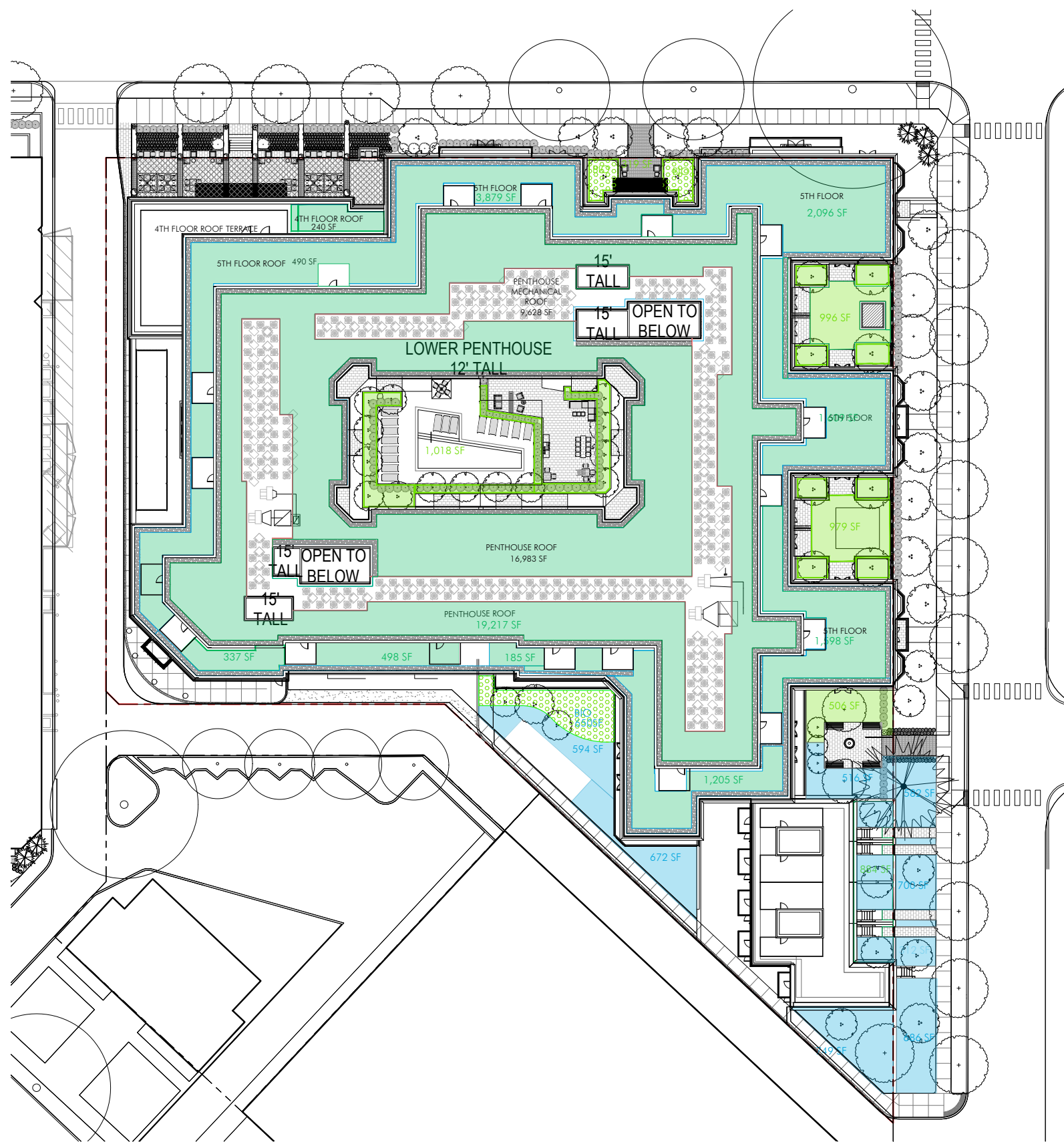
L10



VALOR DEVELOPMENT
TORTI GALLAS URBAN

PARKER RODRIGUEZ, INC.
Planning | Urban Design | Landscape Architecture

THE LADY BIRD



Green Area Ratio Scoresheet				
Address	Wood	Lot	Square	Zoning District
4330 48th Street - Lady Bird				MU-4
Other / BZA Order	enter sq ft of lot	multiple	SCORE	0.317
Lot size (enter this value first) *	79,673			

Landscape Elements				
	Square Ft.	Factor	Total	
A Landscaped areas (select one of the following for each area)				
1 Landscaped areas with a soil depth of less than 24"	enter sq ft	0.3	-	
2 Landscaped areas with a soil depth of 24" or greater	4,285	0.6	2,572.8	
3 Bioretention facilities	969	0.4	387.6	
B Plantings (credit for plants in landscaped areas from Section A)				
1 Groundcovers, or other plants less than 2' tall at maturity	enter sq ft	0.2	-	
2 Plants, not including grasses, 2' or taller at maturity - calculated at 9 sq ft per plant (typically planted no closer than 18" on center)	enter number of plants	0.3	675.0	
3 Tree canopy for all new trees 2.5" to 6" diameter or equivalent - calculated at 50 sq ft per tree	enter number of trees	0.5	925.0	
4 Tree canopy for new trees 6" diameter or larger or equivalent - calculated at 250 sq ft per tree	enter number of trees	0.6	-	
5 Tree canopy for preservation of existing tree 6" to 12" diameter or larger or equivalent - calculated at 250 sq ft per tree	enter number of trees	0.7	-	
6 Tree canopy for preservation of existing tree 12" to 18" diameter or larger or equivalent - calculated at 600 sq ft per tree	enter number of trees	0.7	-	
7 Tree canopy for preservation of all existing trees 18" to 24" dia. or equivalent - calculated at 1300 sq ft per tree	enter number of trees	0.7	-	
8 Tree canopy for preservation of all existing trees 24" diameter or larger or equivalent - calculated at 2000 sq ft per tree	enter number of trees	0.8	-	
9 Vegetated wall, plantings on a vertical surface	enter sq ft	0.6	-	
C Vegetated or "green" roofs				
1 Over at least 2" and less than 6" of growth medium	enter sq ft	0.6	17,146.8	
2 Over at least 6" of growth medium	enter sq ft	0.8	2,834.4	
D Permeable Paving***				
1 Permeable paving over at least 6" and less than 24" of soil or gravel	enter sq ft	0.4	-	
2 Permeable paving over at least 24" of soil or gravel	enter sq ft	0.5	680.0	
E Other				
1 Enhanced tree growth systems***	enter sq ft	0.4	-	
2 Renewable energy generation	enter sq ft	0.5	-	
3 Approved water features	enter sq ft	0.2	-	
H Bonuses				
1 Native plant species	enter sq ft	0.1	-	
2 Landscaping in food cultivation	enter sq ft	0.1	-	
3 Harvested stormwater irrigation	enter sq ft	0.1	-	
sub-total of sq ft = 42,838				
Green Area Ratio numerator = 25,222				
Total square footage of all permeable paving and enhanced tree growth = 680				

GAR CALCULATIONS - STREET LEVEL

- VEGETATED ROOF AREA (8" OR MORE) = 4,059 SF
- VEGETATED ROOF AREA (LESS THAN 8") = 28,578 SF
- LANDSCAPE AREA (24" OR MORE) AREA = 3,769 SF
- NEW TREE CANOPY (2.5'-6" DIA) = 30 TREES
- NEW PLANTS (2'-0" OR TALLER) = 250 SHRUBS
- BIORETENTION FACILITIES = 969 SF
- PERMEABLE PAVER = 1,360 SF