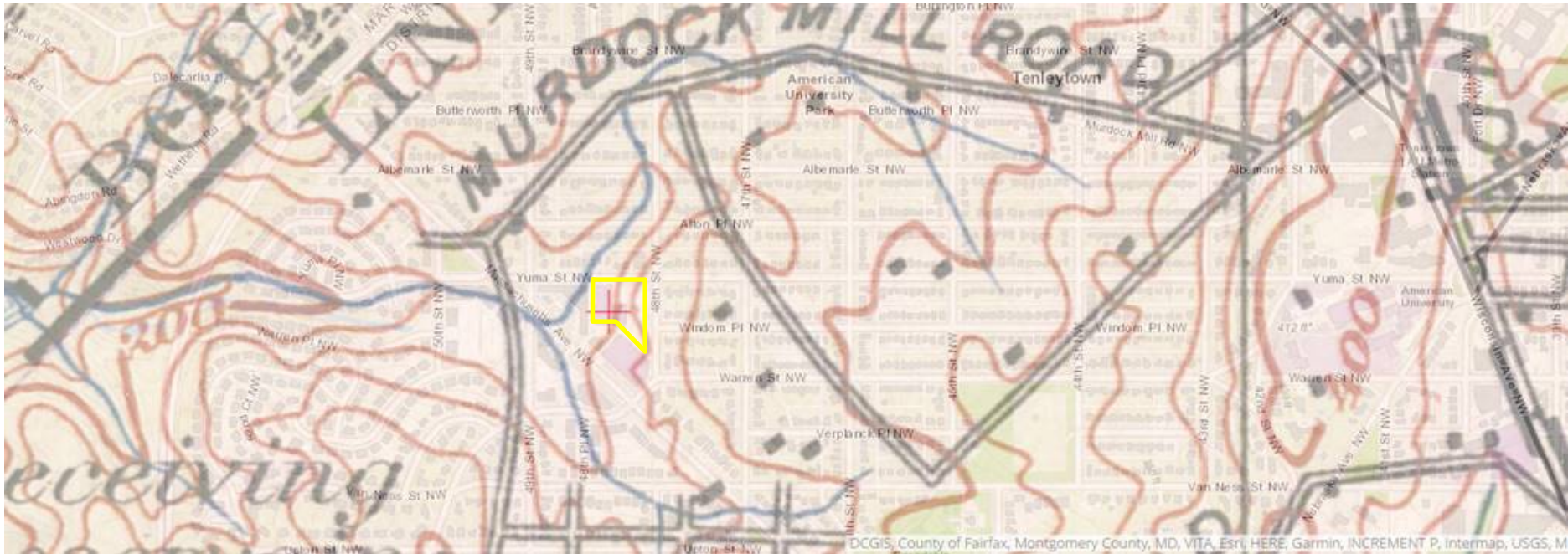


# Site Elevation

## Site Elevation

- 1900: When Murdock Mill Creek was still an open stream channel, the subject site had an elevation of approximately 265' (contour lines are 20' intervals)



### Sources

Historical Mapping: USGS Historical Topographic Map Explorer  
(<http://historicalmaps.arcgis.com/usgs/>)

## Site Elevation

- 1945: The street grid and approximate elevation of 48<sup>th</sup> Street were established
- 48<sup>th</sup> Street was, at its peak, approximately 265'
- Contour lines are 10' intervals



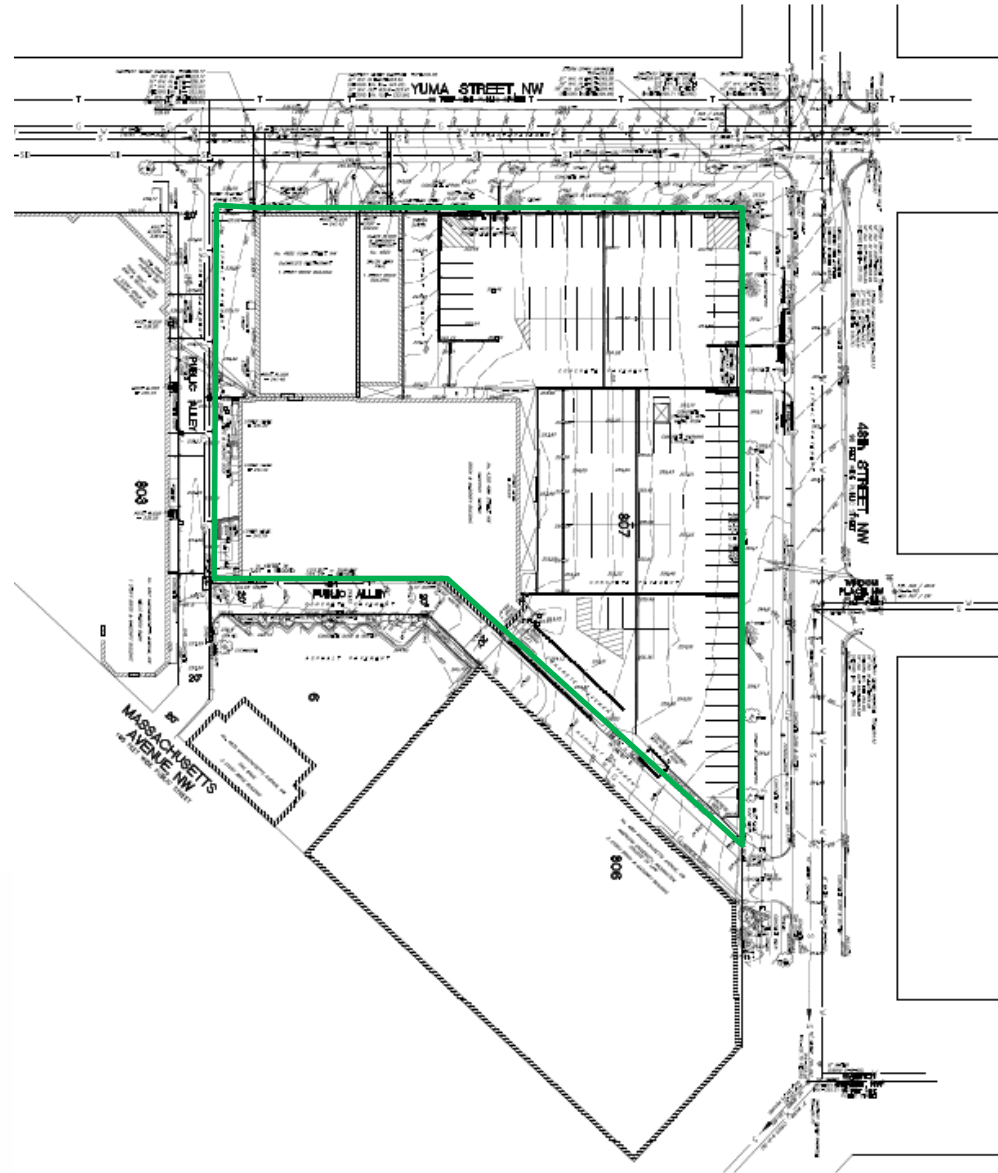
### Sources

Historical Mapping: USGS Historical Topographic Map Explorer  
(<http://historicalmaps.arcgis.com/usgs/>)



## Site Elevation

- 2016: Existing Conditions survey indicates a peak elevation of 265.18' on 48<sup>th</sup> Street
- Contours lines are 1' intervals



### Sources

Existing Conditions Survey (AMT, 2016)