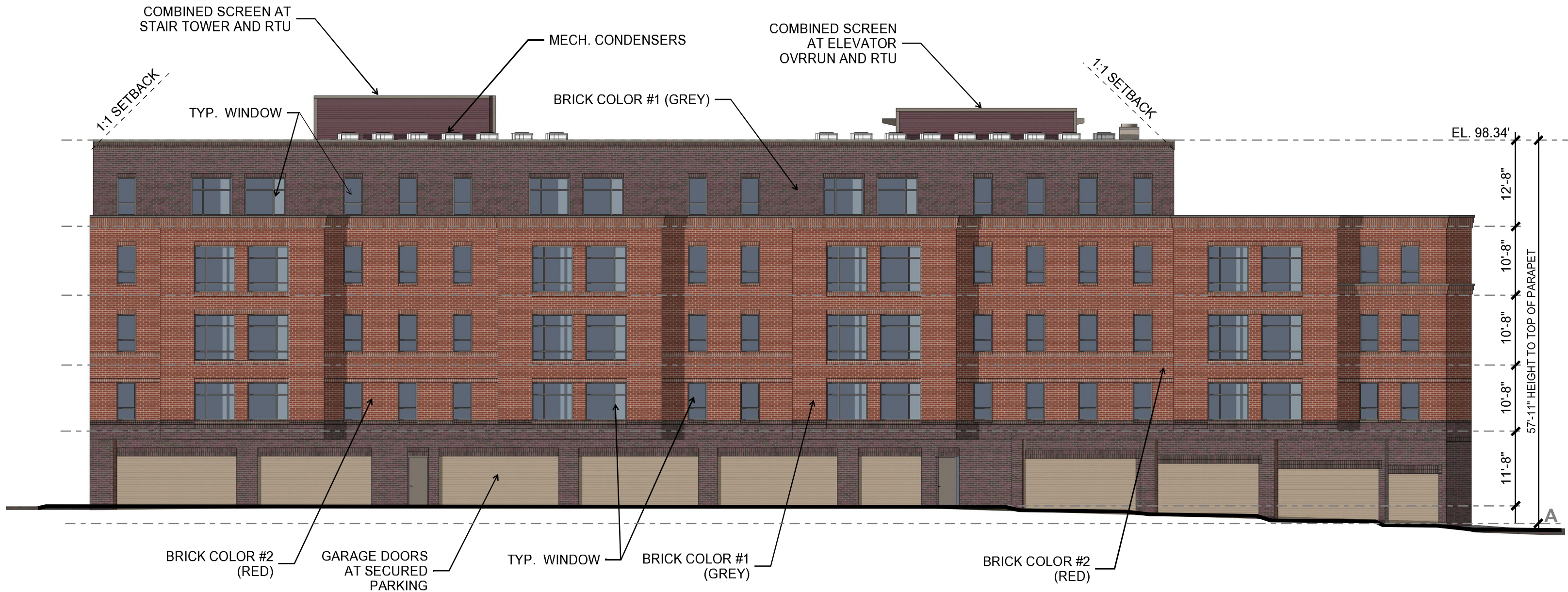


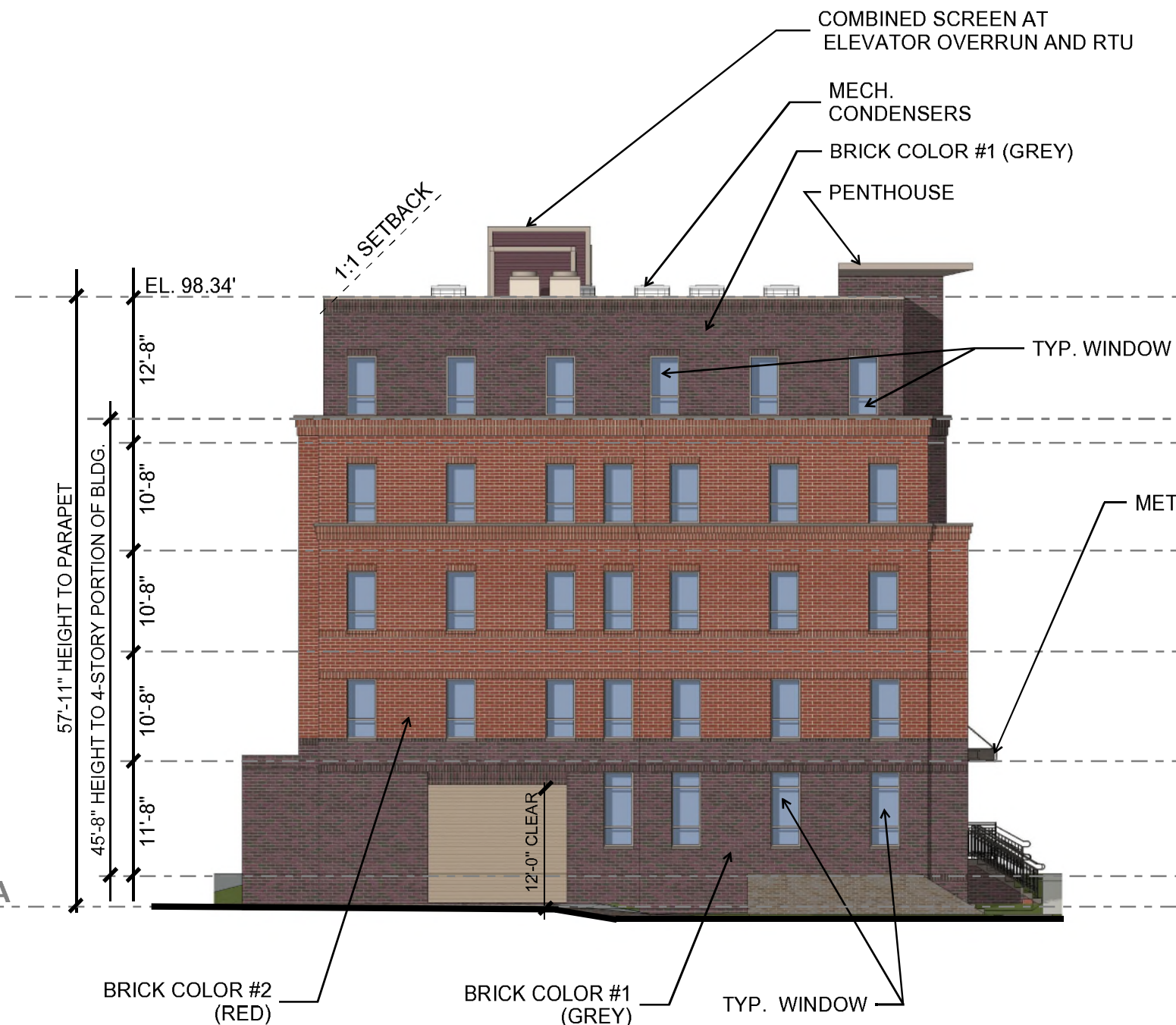
A - BUILDING HEIGHT MEASURING POINT = 40.48'

NOTE: BUILDING HEIGHT SHALL BE THE VERTICAL DISTANCE MEASURED FROM THE LEVEL OF THE CURB, OPPOSITE THE MIDDLE OF THE FRONT OF THE BUILDING TO THE HIGHEST POINT OF THE ROOF OR PARAPET.

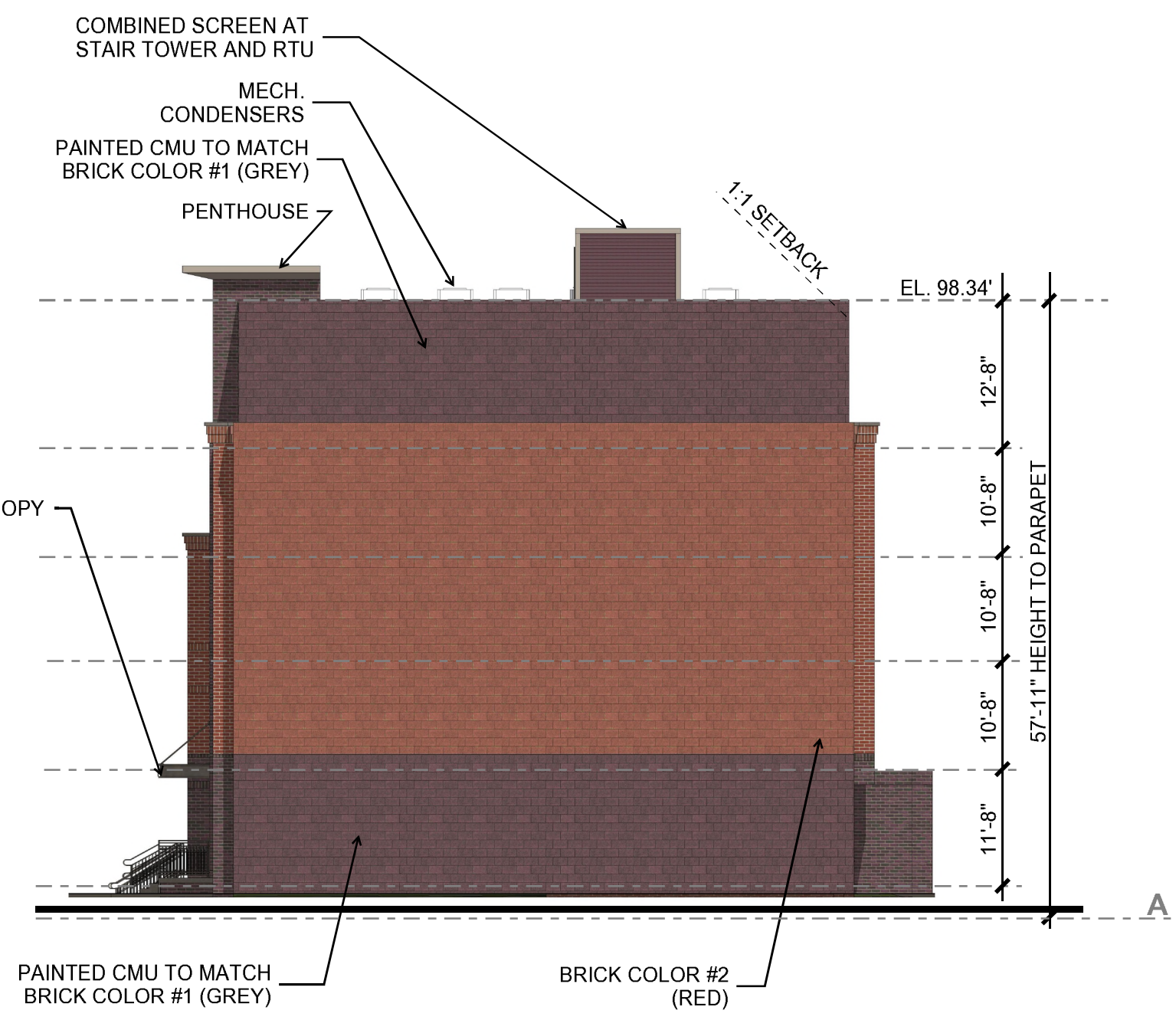


A - BUILDING HEIGHT MEASURING POINT = 40.48'

NOTE: BUILDING HEIGHT SHALL BE THE VERTICAL DISTANCE MEASURED FROM THE LEVEL OF THE CURB, OPPOSITE THE MIDDLE OF THE FRONT OF THE BUILDING TO THE HIGHEST POINT OF THE ROOF OR PARAPET.



West Elevation



East Elevation

A - BUILDING HEIGHT MEASURING POINT = 40.48'

NOTE: BUILDING HEIGHT SHALL BE THE VERTICAL DISTANCE MEASURED FROM THE LEVEL OF THE CURB, OPPOSITE THE MIDDLE OF THE FRONT OF THE BUILDING TO THE HIGHEST POINT OF THE ROOF OR PARAPET.



BEFORE



AFTER



BEFORE



AFTER



BEFORE

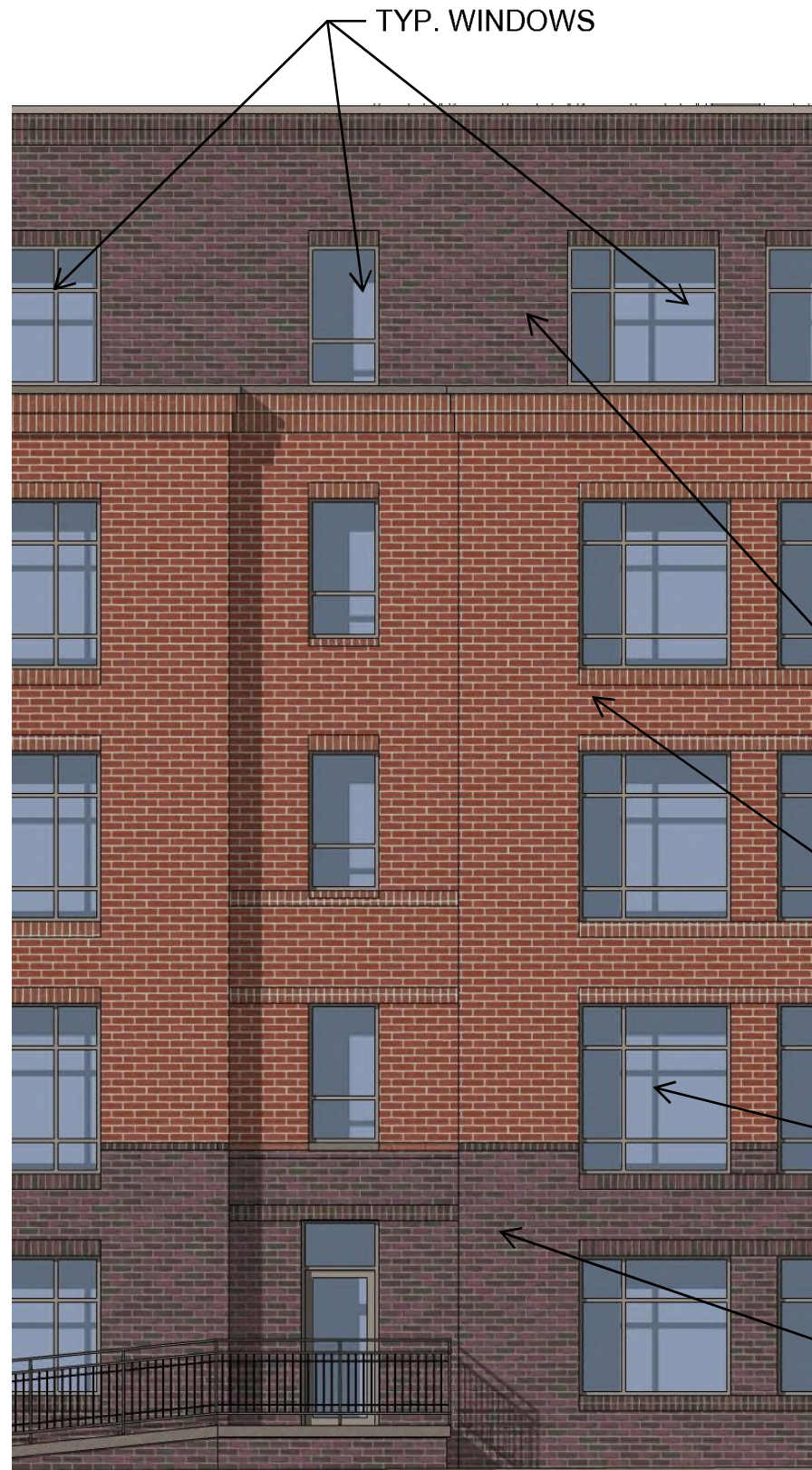


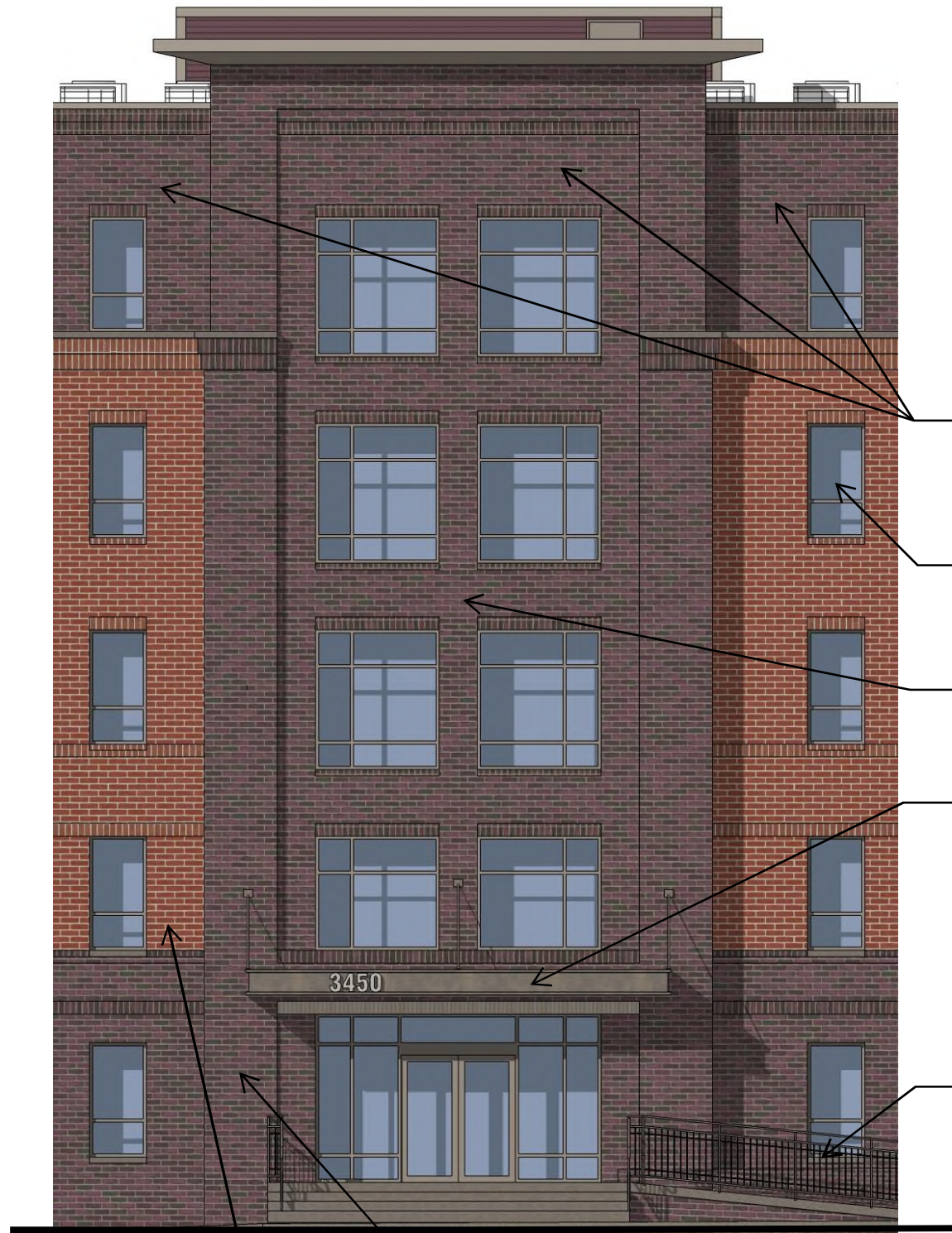
AFTER











BRICK COLOR #1
(GREY)
THIN BRICK AT 5TH
FLOOR WINDOW
SILL AND ABOVE

TYP. WINDOW

BRICK COLOR #1
(GREY)

GLASS + METAL
CANOPY

ALUM. RAILING

BRICK COLOR #1
(RED)

BRICK COLOR #1
(GREY)



CANOPY PRECEDENTS



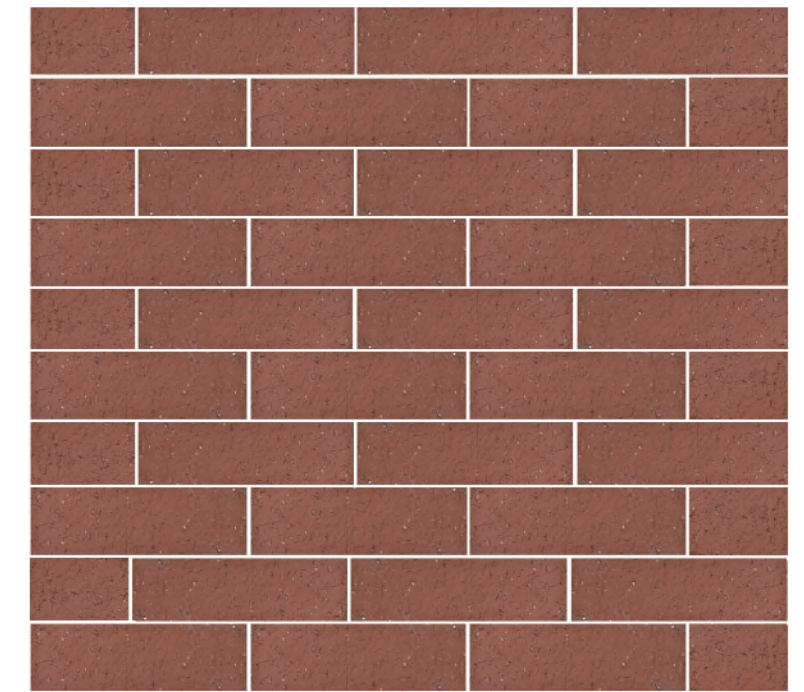
FRONT ELEVATION



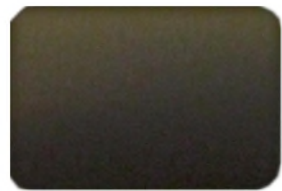
METAL CORNICE



SOUTH ELEVATION



BRICK COLOR 2



METAL CANOPY



NORTH ELEVATION



BRICK COLOR 1



ALUMINIUM AND GLASS FOR MAIN BUILDING ENTRY



