

**GEORGETOWN UNIVERSITY CAMPUS PLAN 2017 – 2036  
ANNUAL COMPLIANCE REPORT (PURSUANT TO CONDITION 35)**

EXHIBITS TO CONDITION 15

## *On- and Off-Campus Party Policies and Student Conduct Adjudication Process*

---

The University has continued to actively implement policies and practices to make on-campus social life more welcoming and to reduce the impacts of off-campus parties. Examples of these efforts include:

- The University continued its open container policy in certain outdoor areas of campus, including the Alumni Square courtyard, LXR courtyard, Village A courtyard, and Henle Village courtyard. The open-container program allows small groups of students to socialize in University residential outdoor spaces with open containers. Most of these spaces include grills and/or outside furniture for student use as well. The program continues to be successful and without incident.
- The Georgetown University Police Department (GUPD) and Office of Residential Living staff managed on-campus student parties to keep them under control; staff generally did not break up on-campus parties unless they became too large, disruptive, or unsafe.
- In order to better incorporate student perspectives into the development of policies designed to improve on-campus socializing, a student representative serves as a third co-chair of the GCP Safety and Student Life Working Group.

With respect to off-campus activities, the Code of Student Conduct states: “Excessive sound which infringes upon the community’s right to reasonable peace and quiet is prohibited at all times. For non-University-owned properties, if noise can be heard beyond the property line, it is probably excessive, taking into account the time and the nature of the activity generating the sound.”

- The Office of Neighborhood Life communicates this language during off-campus orientations and the language is in the Hoya Living Guide. This policy continues to be the standard that the Student Neighborhood Assistance Program (SNAP) uses while on proactive patrol. Work remains to ensure students understand that the policy applies to daytime noise as well.
- As detailed in the 2024-2025 Neighborhood Statistics Report (see response to Condition 14), violations of off-campus living expectations, including excessive noise, are referred to the Assistant Director of Student Conduct for adjudication through a process that has successfully increased transparency and completion of cases.

**GEORGETOWN UNIVERSITY CAMPUS PLAN 2017 – 2036  
ANNUAL COMPLIANCE REPORT (PURSUANT TO CONDITION 35)**

EXHIBITS TO CONDITION 16

## *Engagement with DC Agencies*

---

Working with the GCP, the University has strengthened its relationships with city agencies to address quality of life and safety issues in the community. Specifically:

- The Office of Neighborhood Life (ONL) and the GCP Environment and Landlord Initiatives Working Group maintain working relationships with the Department of Public Works (DPW) to understand and enforce regulations regarding trash management and to support neighborhood cleanups.
- ONL and the GCP continue to work closely with the DC Department of Buildings (DOB) and Department of Licensing and Consumer Protection (DLCP) to inspect off-campus rental properties to ensure they are safe and properly licensed and to respond to tenant complaints.
- ONL continues to maintain a working relationship with the Office of the Tenant Advocate (OTA) connecting students with an advocate in dealing with landlord-tenant disputes.
- ONL continues to maintain working relationships with the Mayor's Office of Community Relations to assist with quality-of-life concerns facing students and non-students alike.
- ONL has initiated efforts to work with DPW's Parking Enforcement Management Administration (PEMA) to improve communication and coordination with respect to issues and policies regarding street parking enforcement including ticketing, booting, towing, and impoundment.
- The GCP continues to work to ensure consistent engagement from MPD-2D leadership and regular access to police reports.
- Josh Bornstein was appointed as Vice President for Public Safety on Tuesday, September 2, 2025. He now oversees all police and public safety functions across the university, fostering a unified, community-oriented approach to ensure the safety and well-being of the campus community. He leads Georgetown's police, public safety, public health, environmental health, and emergency management teams across both the Hilltop and Capitol Campuses, aiming to strengthen partnerships within the university and with neighboring communities. Josh served as the Chief Security Officer and Deputy Associate Administrator for Mission Support at the Federal Emergency Management Agency (FEMA). He previously held leadership roles in homeland security, public health, and food security in the U.S. Centers for Disease Control and Prevention (CDC) and the U.S. Department of Agriculture.

**GEORGETOWN UNIVERSITY CAMPUS PLAN 2017 – 2036  
ANNUAL COMPLIANCE REPORT (PURSUANT TO CONDITION 35)**

EXHIBITS TO CONDITIONS 17 AND 18

# Welcome to Georgetown University

Off-Campus Housing Website

[View Rentals](#)



## Georgetown University's Graduate Housing

Live, study, work and explore at the heart of the nation's capital when



## 77H Apartments – Near Union Station

A quick GUTS shuttle bus ride to Georgetown University, [ZZH](#)



## Off-Campus Resources for Capitol Campus Students

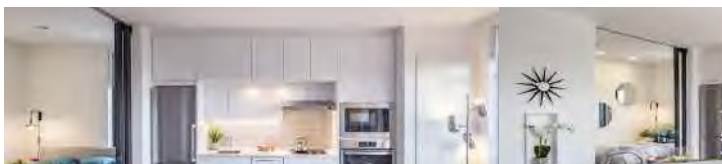


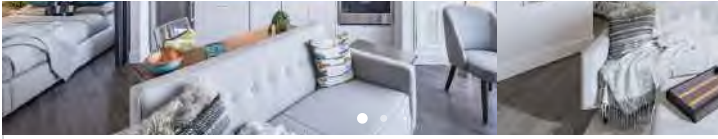
## Georgetown Medical Students

Visit the Georgetown Medical website [here](#).



## Explore Rentals





### AdMo Heights

\$1,651 - \$2,489 Plus Fees

1 Bed | 12 Month Lease



### Arrive Silver Spring

\$1,425 - \$2,650 Plus Fees

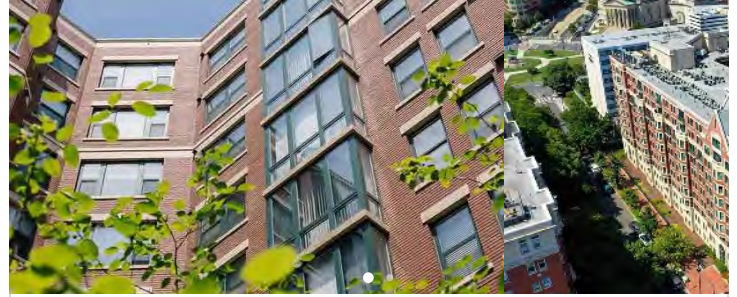
Studio - 2 Beds



### Market House

\$1,685 - \$8,270  Total Monthly Price

Studio - 3 Beds



### 1301 Thomas Circle

\$2,260 - \$4,285  Total Monthly Price

1 - 3 Beds

[View All Rentals](#)

# Welcome to the Georgetown Capitol Campus

Off-Campus Housing Website

[View Rentals](#)



## Students, Faculty & Staff

[Register here](#) to start your search.



## Georgetown University's Graduate Housing

Live, study, work and explore at the heart of the nation's capital when



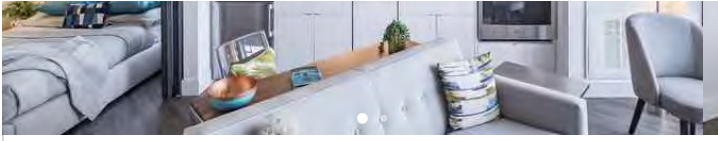
## 77H Apartments – Near Union Station

Conveniently located within a block from 111 Massachusetts



## Explore Rentals

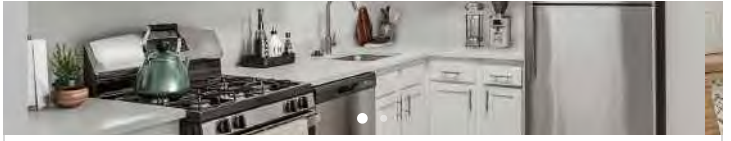




### AdMo Heights

\$1,651 - \$2,489 Plus Fees

1 Bed | 12 Month Lease



### Arrive Silver Spring

\$1,425 - \$2,650 Plus Fees

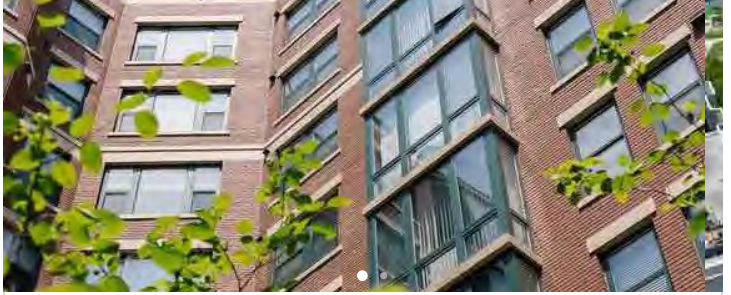
Studio - 2 Beds



### Banner Lane

\$1,612 - \$7,013  Total Monthly Price

Studio - 4 Beds



### 1301 Thomas Circle

\$2,260 - \$4,285  Total Monthly Price

1 - 3 Beds

[View All Rentals](#)

**GEORGETOWN UNIVERSITY CAMPUS PLAN 2017 – 2036  
ANNUAL COMPLIANCE REPORT (PURSUANT TO CONDITION 35)**

EXHIBITS TO CONDITION 19

## *Improvements to Promote On-Campus Student Life*

---

### *Campus Programs and Policies*

Consistent with the Campus Plan's vision for a more vibrant living and learning campus, the University has continued many existing efforts and implemented a number of new programs that have improved student social life on campus, including continuing policies regarding on-campus parties and open containers that permit greater on-campus social opportunities in the residence halls and in outdoor on-campus spaces.

### *Campus Facility and Student Service Improvements*

Following on both the comprehensive housing renewal effort undertaken during the period of time while on-campus operations were impacted by the COVID-19 pandemic, as well as major projects in 2022 and 2023, the University continued to focus significant effort and resources on improving the quality of student residential buildings throughout campus. This effort included:

- **Residence Halls Renovations:** Completed full interior renovation of 26 units apartment-style units in Nevils Hall, aimed explicitly at attracting upper-class students back on campus.
- **Townhouse Renovations:** Completed full interior and exterior renovations of student living townhouses at 3609 O Street. Features include a new kitchen, bathrooms, bedrooms, roofing, siding, insulation, mechanical equipment, exterior improvements, and finishes.
- **Redevelopment of the former Henle Village:** In August 2025, construction was completed on the 8-story, 255,000 square foot, 700+ bed residence hall. The building provides 200+ additional beds on the Hilltop campus and features a wellness center, study spaces, resident amenities, and an exterior courtyard.

Additional projects and initiatives focused on supporting student quality of life on campus included:

- **Fire Safety Upgrades:** The University continues to make significant upgrades to fire alarm systems, access and egress, and sprinkler systems across campus, starting with residential halls. All dorm buildings, Medical Campus buildings, and Leavey Center fire alarm replacements are expected to be completed by FY 2026.
- **Elevator Modernization:** Four additional elevator upgrade and improvement projects

are scheduled for completion in FY 2026. Eleven modernizations have been completed as of October 2025.

- **Healy Ground Floor (Healy G):** Renovations were completed, creating dedicated spaces for the Georgetown Scholars Program, Mission & Ministry, and Student Wellbeing. These spaces will include student program areas, lounges, and a new hub for student life, transforming a space that had been vacant for nearly a decade. This project introduced a new, more accessible building entrance and improved the adjacent sidewalk to provide a faster and more direct accessible route from this level.
- **Site Improvements & Sidewalk Paving:** Throughout all areas of the Hilltop campus, site improvements were made to hardscaping features, including additional Big Belly waste dispensers, repaved curb cuts and sidewalks, repaved streets, restriped crosswalks, repointed brick pavers, as well as refreshed landscaping throughout campus.
- **Walsh Digital Media Lab:** The Department of Art & Art History has completed the creation of a new digital media lab in Walsh, expanding capacity beyond the consistently full Napolitano Digital Art Studio. This additional lab addresses scheduling limitations, supports digital photography and animation courses, and provides students with enhanced access to digital resources and production space.
- **McDonough Arena New Flooring and Bleachers:** The entire court in McDonough Arena was replaced, along with upgraded bleachers and seating, to enhance the overall fan experience.
- **Yates Basketball Flooring Replacement:** The wood flooring of the basketball courts was replaced. The new playing surface was installed and refinished to restore safety, functionality, and appearance for court users.
- **Shaw Field lighting:** This project installed six new light poles on Shaw Field to enable nighttime activities for men's and women's NCAA soccer. The work included the design and construction of electrical service, pole foundations, and related site improvements to enhance field functionality and flexibility.
- **Reiss Hoteling Suite, 4th Floor:** This completed project transformed a former laboratory on the fourth floor of Reiss Science Hall into a flexible, 5,520-square-foot hoteling and meeting space to support hybrid work.
- **GUMC Cluster Hire:** This project renovated and upgraded laboratory and office

spaces in Building D, the New Research Building, and Med-Dent to accommodate new Georgetown University Medical Center hires. The work included interior demolition and modernization to create functional, updated environments that support research and collaboration.

- **Leavey Student Center furniture replacement:** Furniture in the Leavey Student Center was replaced to enhance the student experience in one of the busiest student gathering locations on campus.
- **Student Health Center** - renovation to improve the on-campus health center. The renovated facility will open for the Fall 2025 semester.

**GEORGETOWN UNIVERSITY CAMPUS PLAN 2017 – 2036  
ANNUAL COMPLIANCE REPORT (PURSUANT TO CONDITION 35)**

EXHIBITS TO CONDITION 20



DO NOT  
ENTER

6:00-10:15 AM  
MON. - FRI

EXCEPT  
GUTS BUSES

Shuttles

A Sustainable Future for the GUTS Bus System

Arlington Shuttle

Dupont Circle Shuttle

Capitol Campus Shuttle

Gallery Place Loop

Union Station Loop

55 H Street Weekend Shuttle

Rosslyn Shuttle

Wisconsin Avenue Shuttle

GUTS Holiday Schedule

Home / Shuttles

Shuttles

Georgetown University Transportation Shuttle (GUTS)

The Georgetown University Transportation Shuttle (GUTS) is a free shuttle bus for faculty, staff, students, and others affiliated with Georgetown University and Medstar Georgetown University Hospital. GUTS buses connect the Hilltop Campus with two Metro stations and university offices on Wisconsin Avenue. All shuttles travel the same routes and follow the same schedule year round, excluding holidays.

View Service Updates and Announcements >

Use the NextGUTS App to track live >



Arlington Shuttle

View Route >



Dupont Circle Shuttle

View Route >



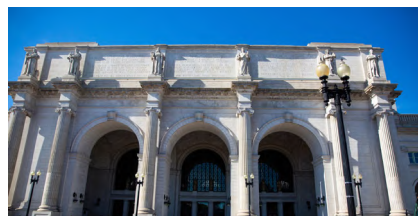
Capitol Campus Shuttle

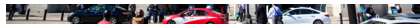
View route >



Gallery Place Loop

View route >





### Union Station Loop

[View route >](#)



### 55 H Street Weekend Shuttle

[View route >](#)



### Rosslyn Shuttle

[View route >](#)



### Wisconsin Ave Shuttle

[View route >](#)



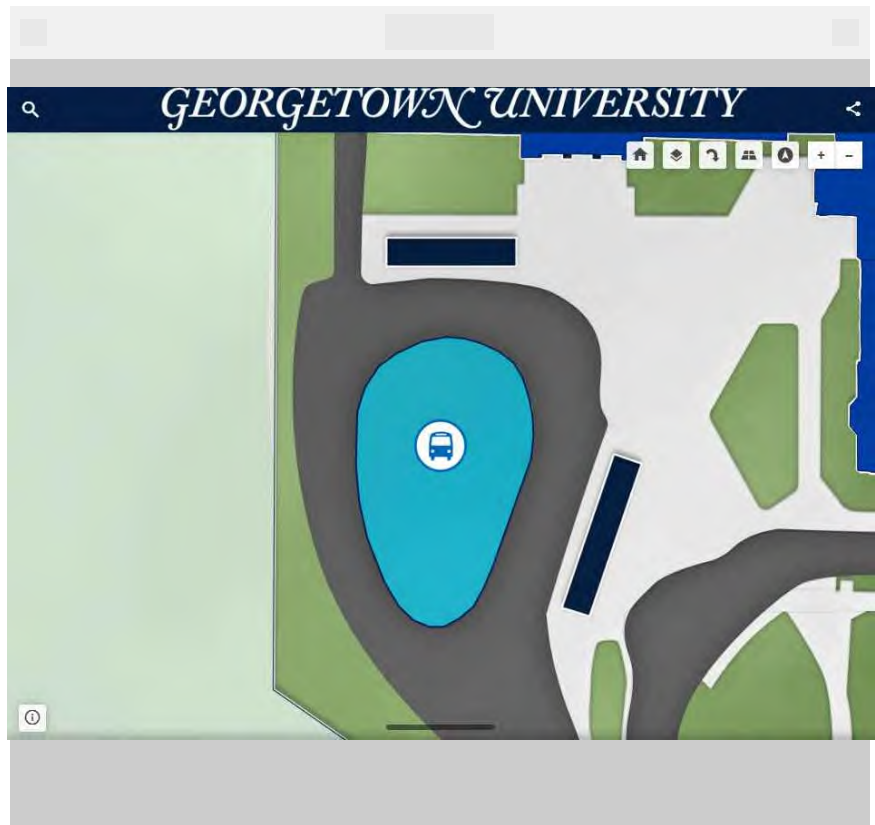
### Holiday Shuttles

[View routes >](#)

## Pickup Locations

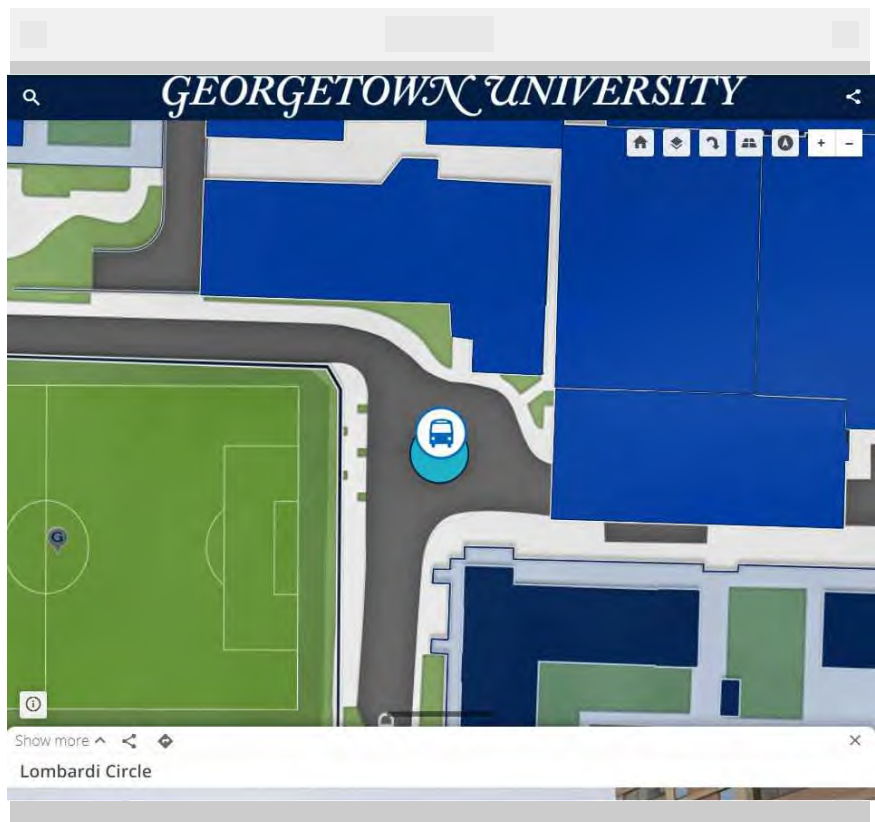
### McDonough Bus Turnaround

The bus turnaround is a pickup location for the Arlington, Capitol Campus Route, 55 H Saturday Route, Dupont, and Rosslyn shuttles.

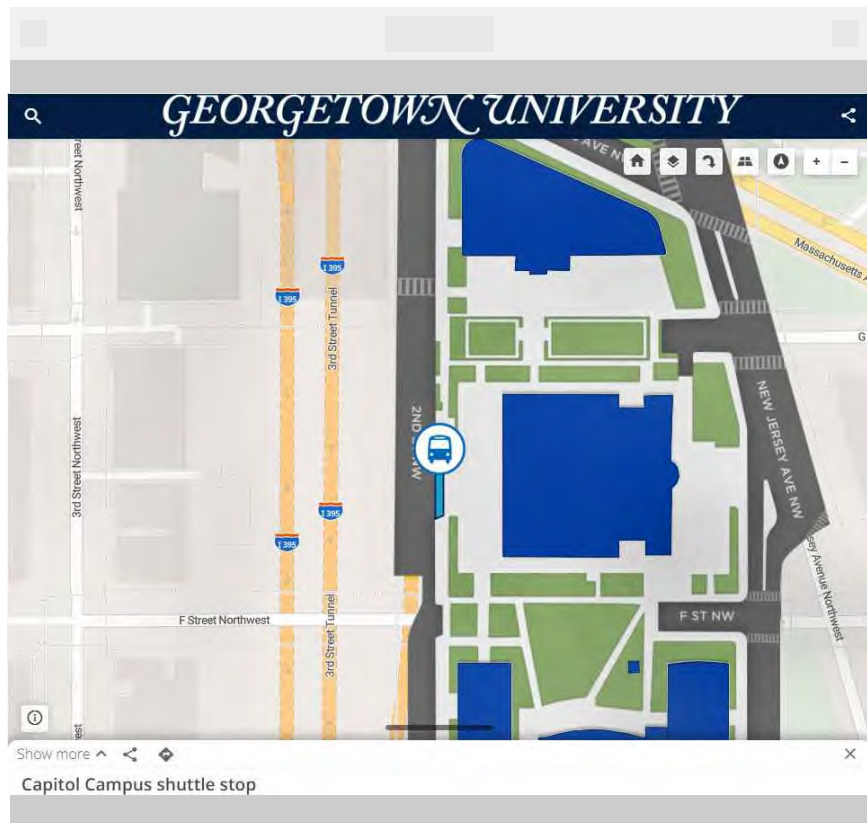


### Lombardi Circle

Lombardi Circle is a pickup location for the Wisconsin Ave, Dupont, and Rosslyn GUTS shuttles.



## Capitol Campus Stop



## Lost & Found

Items may be picked up 8:30 a.m. to 4:00 p.m. Monday – Friday from the office located in Kennedy Hall on the Mezzanine "M" Level. If the items are not picked up from OTM within 30 days, you will be able to pick them up from Department of Public Safety located in Village C. The contact number is 202-687-4343.

## Transportation

GEORGETOWN UNIVERSITY

Kennedy Hall, Mezzanine  
37th and O Streets, N.W.  
Washington DC  
P. [202-687-4372](tel:202-687-4372)  
E. [otm@georgetown.edu](mailto:otm@georgetown.edu)

[Privacy Policy](#)

[Copyright](#)

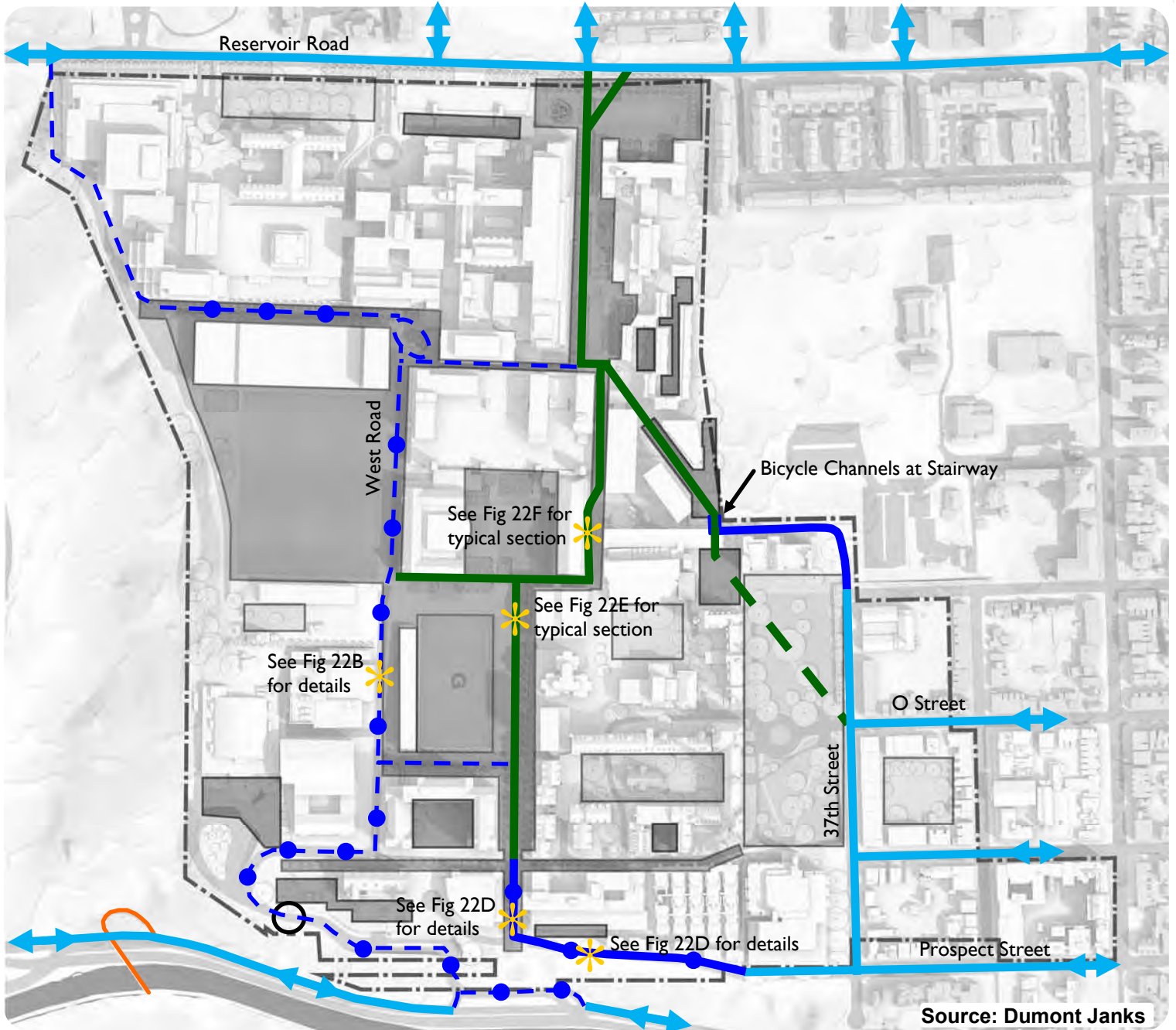
[Accessibility](#)

[Notice of Non-Discrimination](#)

© 2025 Transportation

**GEORGETOWN UNIVERSITY CAMPUS PLAN 2017 – 2036  
ANNUAL COMPLIANCE REPORT (PURSUANT TO CONDITION 35)**

EXHIBITS TO CONDITION 21



- Primary On-Campus Bike Route (On-Street)
- Proposed Sharrows
- - - Secondary On-Campus Bike Route (On-Street)
- Primary On-Campus Bike Route (Shared Ped/Bike Path)
- - - Secondary On-Campus Bike Route (Shared Ped/Bike Path)
- Off-Campus Bike Route
- Off-Street Trail
- Potential location for a connection to the future Palisades Trolley Trail.

Sharrow Dimensions

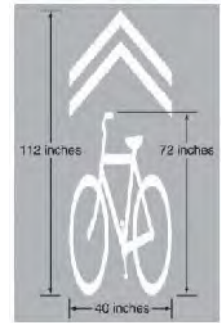


Figure 22A  
Campus Bicycle Routes/Connections



Sharrows shown are conceptual and are not drawn to scale.

Figure 22B  
West Road Proposed Sharrows



Sharrows shown are conceptual and are not drawn to scale.

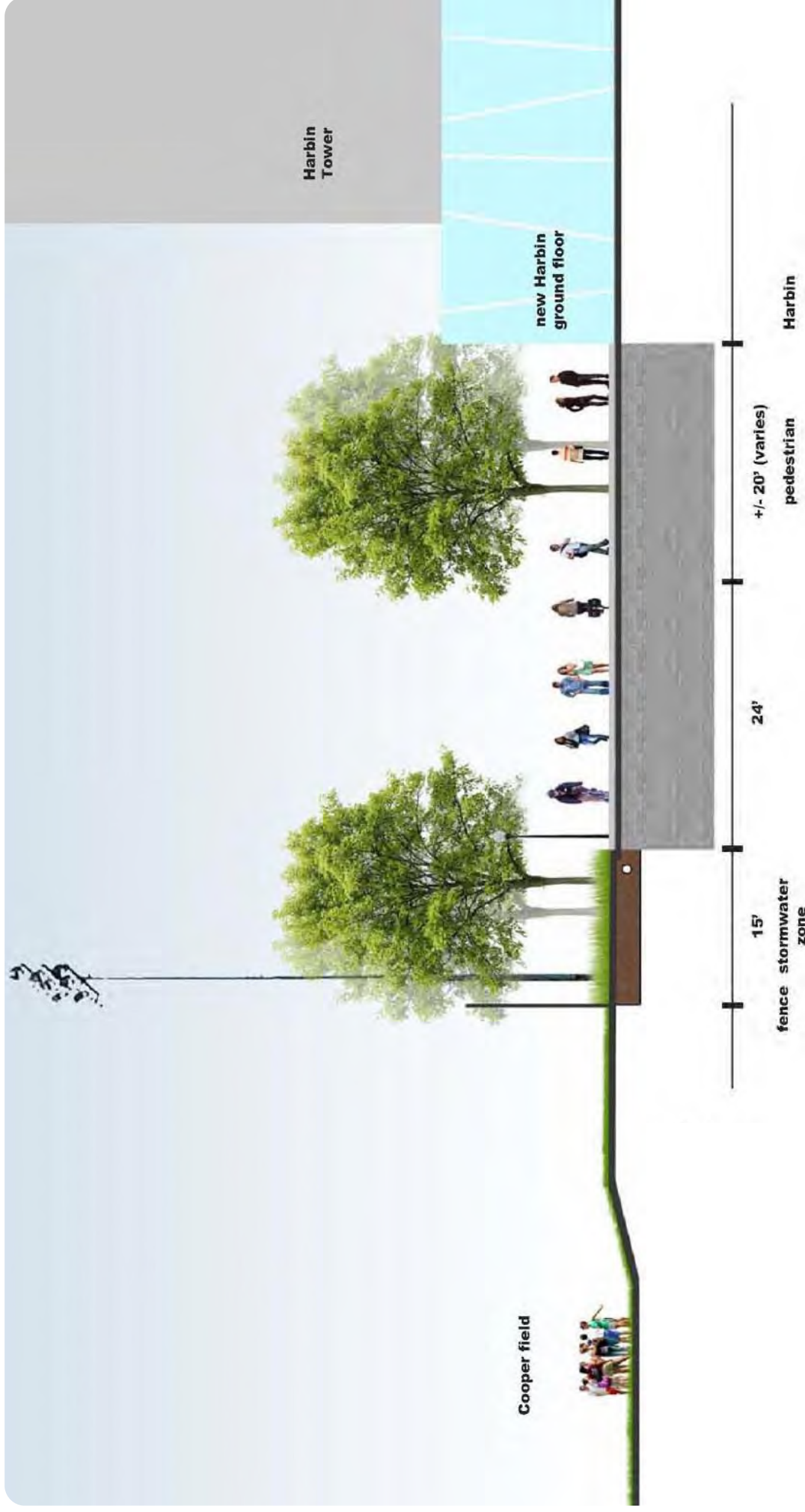
Figure 22C  
Prospect Street Proposed Sharrows





Sharrows shown are conceptual and are not drawn to scale.

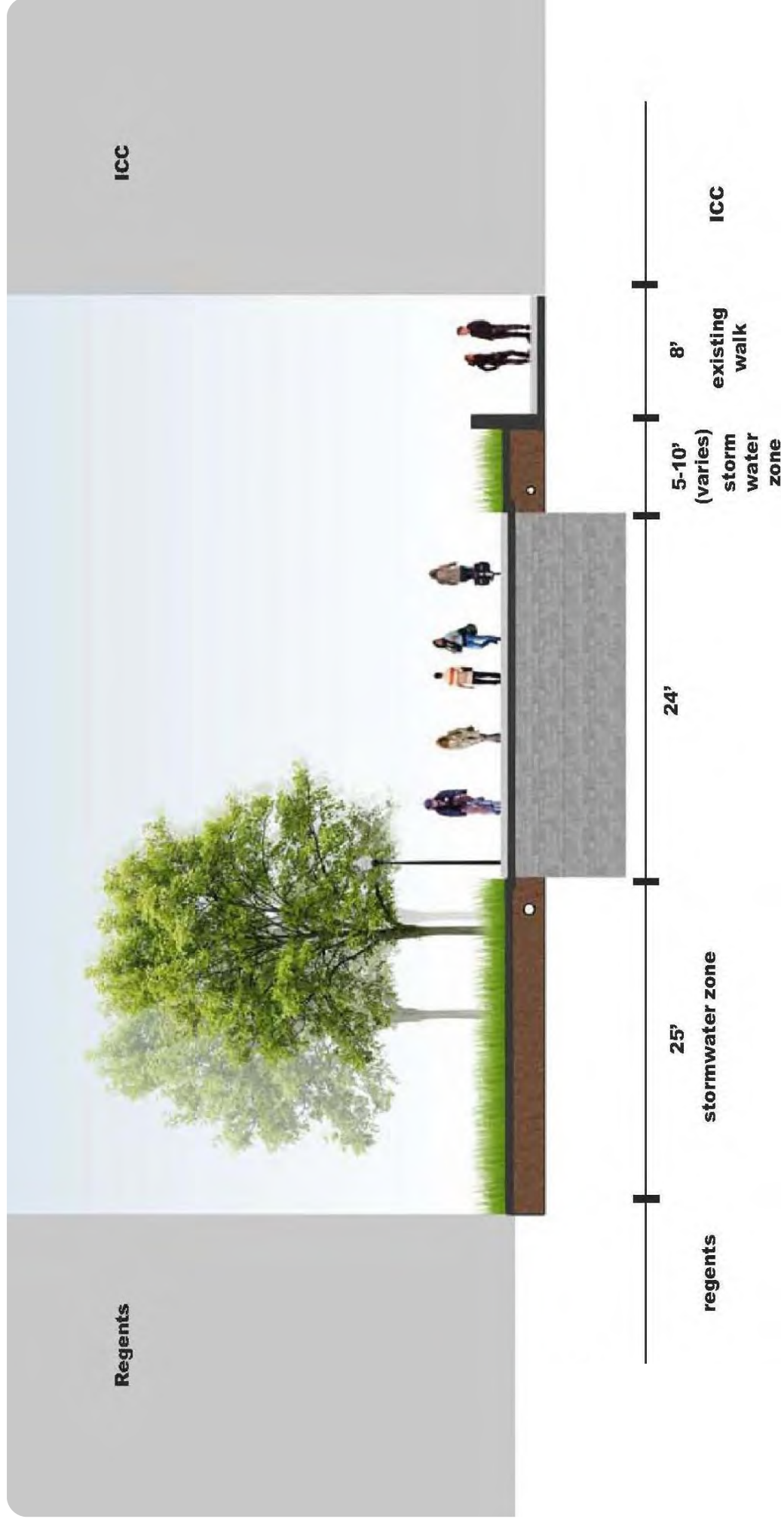
Figure 22D  
Tondorf Road (New South Hall) Proposed Sharrow



Note: Section is conceptual in nature and reflects the future development of the proposed Student Life Corridor as described more fully in Section 3.2.4.1 of the Campus Plan. The University will monitor pedestrian and bicycle activity along the corridor over the term of the Plan to determine whether a dedicated pathway should be delineated in the future to separate pedestrians and bicycles.

Source: Dumont Janks

Figure 22E  
Typical Section - Tondorf Road (at Harbin Tower)



Note: Section is conceptual in nature and reflects the future development of the proposed Student Life Corridor as described more fully in Section 3.2.4.1 of the Campus Plan. The University will monitor pedestrian and bicycle activity along the corridor over the term of the Plan to determine whether a dedicated pathway should be delineated in the future to separate pedestrians and bicycles.

Source: Dumont Janks

Figure 22F  
 Typical Section - Tondorf Road (at between Regents Hall and ICC)

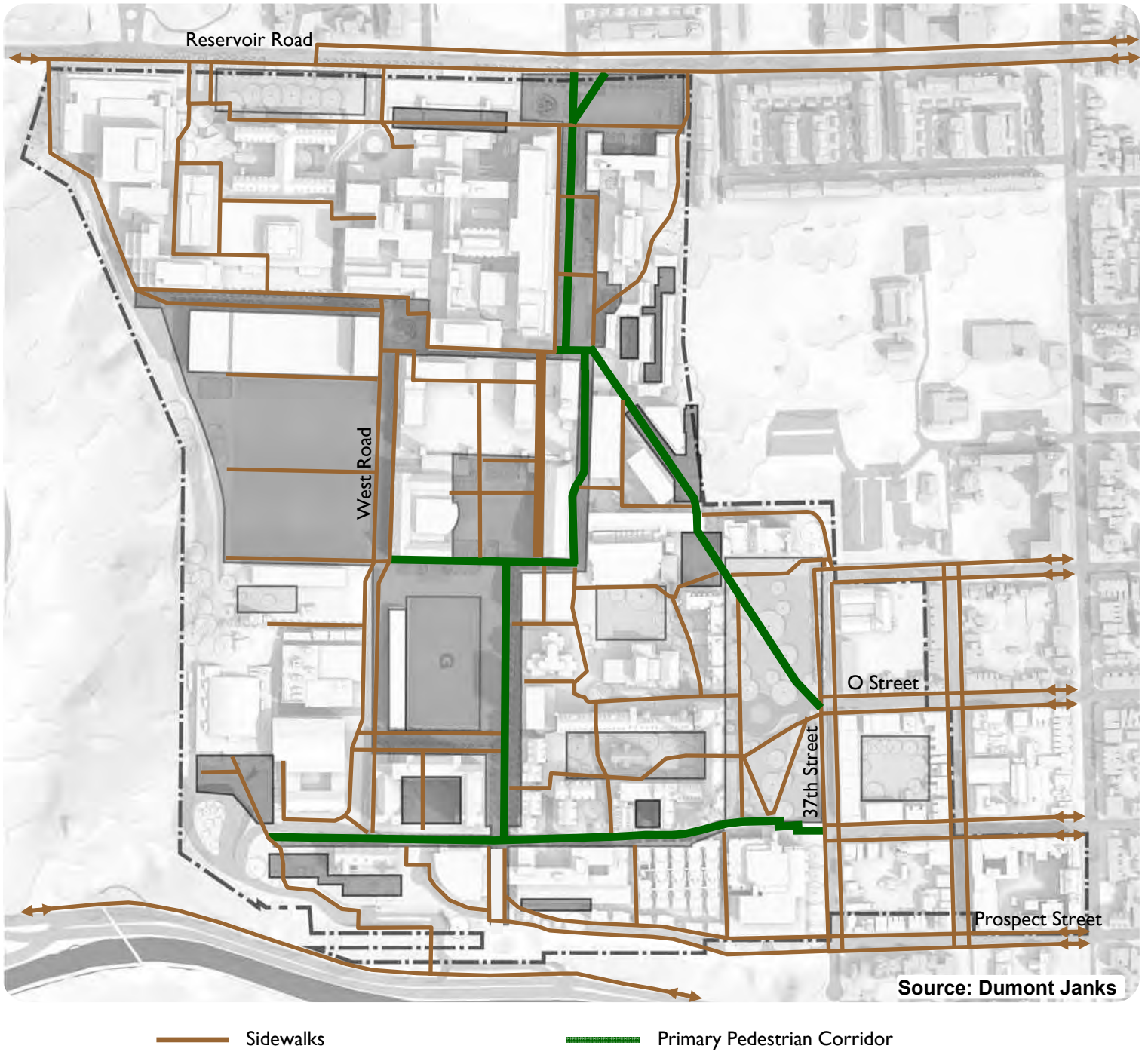
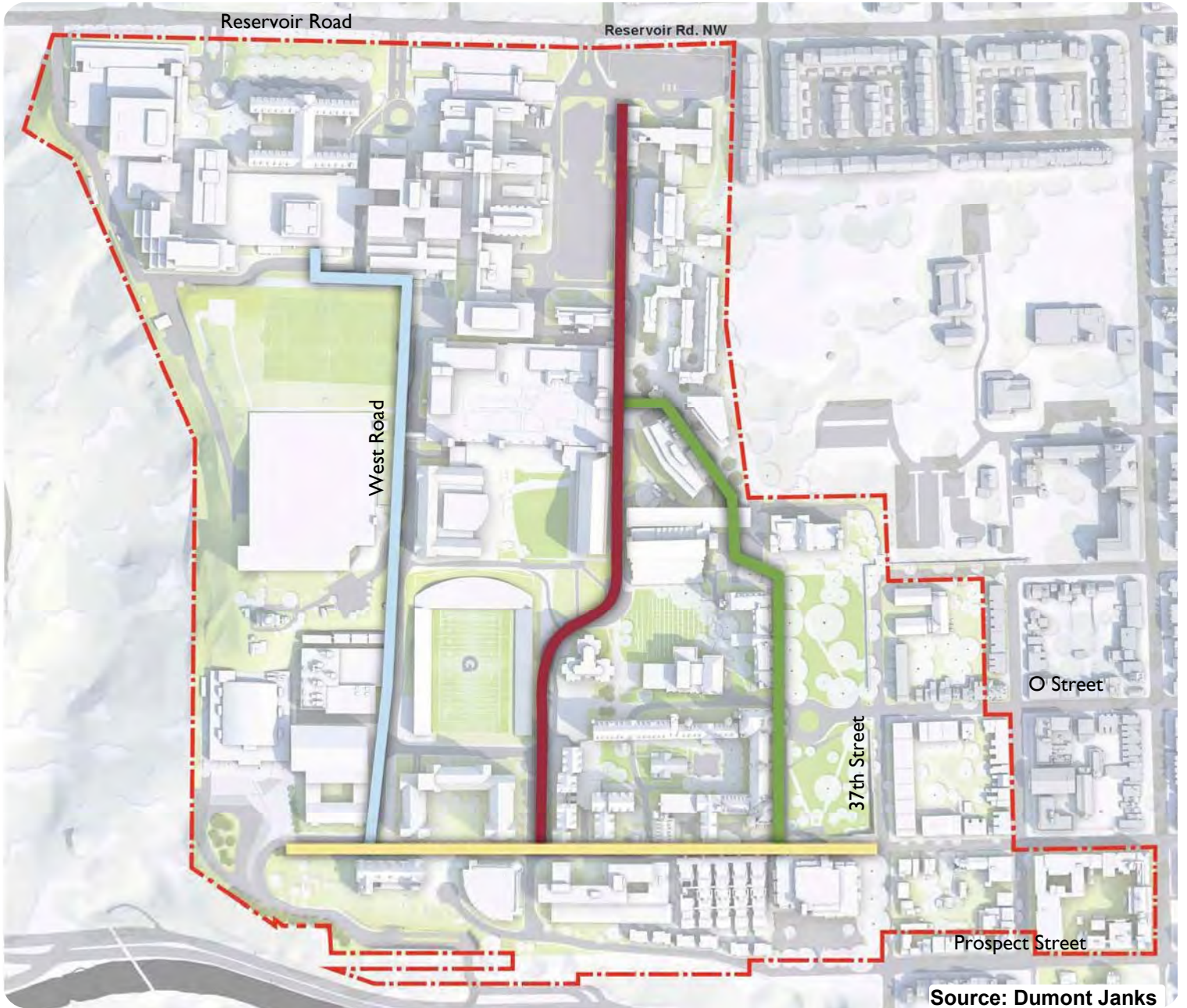


Figure 22G  
Campus Pedestrian Circulation

Georgetown University  
Washington, DC





- Library Walk
- Yates Walk
- Tondorf Walk
- Carroll Walk



\*All renderings and illustrations are conceptual in nature and do not represent specific architectural intent.

Figure 22H  
Conceptual Campus Wayfinding Plan

Messages to the Community

# Healy and Copley Lawn Utilities Project Updates

May 30, 2025 | [f](#) [X](#) [e](#)

Dear Members of the Georgetown University Community,

We are reaching out to provide updates on the ongoing renovation project on [Healy and Copley Lawn](#). This multi-year project involves replacing aging underground utilities with more energy-efficient infrastructure, contributing to Georgetown's long-term commitment to environmental stewardship.

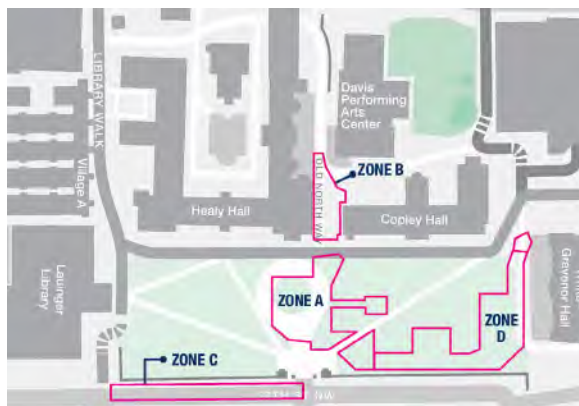
We encourage you to explore [our landing page](#) to learn more about the project plan, benefits and the upcoming site improvements.

### Phase III

Following Reunion Weekend, we will begin Phase III of the project, which entails work in multiple zones, including into off-campus space east of the Hilltop campus. Please find descriptions of each of the zones below.

- o **June 2025 – September 2025:** Healy Circle and Partial Copley Lawn (Zone A)
  - This zone surrounds the John Carroll statue, taking up much of Healy Circle, and covers the south portion of Copley Lawn. During this time, the John Carroll statue will be fenced off.
- o **June 2025 – September 2026:** Old North Way (Zone B)
  - The construction fencing on Old North Way between Healy Hall and Copley Hall will remain in place until late 2026. The pedestrian pathway will continue to be available through Old North Way.
- o **Late Summer 2025:** Lane Closure of 37th St. from O St. to Prospect St. (Zone C)
  - For approximately 12 weeks, this section of 37th St. will be reduced to a single lane heading southbound. Parking in this area will be out of service during this time. Traffic delays are expected as a result of this single lane closure.
- o **September 2025 – November 2025:** Copley Lawn (Zone D)
  - During this time, the fencing previously installed on Copley Lawn during spring 2025 will return, in addition to fencing at the east corner of Red Square.

### Phase III Map



### G2 Bus Pick-up/Drop-off Location Change

Due to the construction on 37th St., the G2 Metro Bus will be changing its pick-up and drop-off location to 37th and Prospect St., directly in front of Lainger Library.

### Capital Bike Share Location

The 37th and O St. NW Georgetown Station for Capital Bike Share will remain accessible in its current location.

### Construction Impacts

Construction hours are Monday through Saturday, 7 a.m. to 7 p.m. Construction will adhere to quiet periods of reduced noise during the hours of 7-8 a.m., Monday through Friday, 7-9 a.m. on Saturdays, and during study days and final exams. Noise may be heard during construction hours in nearby buildings.

Construction vehicles will access the work area from the main entrance at 37th and O St. Pedestrian pathways can be found on the [campus map](#). Measures will continue to be taken to promote pedestrian safety.

### Tree Removal

Between June and October 2025, we will be removing four trees in support of Phase III. These removals are being performed under the close supervision of a professional arborist. New trees will be planted during the site improvements phase of the project.

### Learn More

Please view our [landing page](#) for additional details on this project, including future phases.

If you have questions or concerns, please reach out to [construction@georgetown.edu](mailto:construction@georgetown.edu)

Sincerely,

Planning and Facilities Management

Contact Us

Directory

Visit

Maps

About

Academic Calendar

Careers

Media Resources

[Instagram](#)

[LinkedIn](#)

[TikTok](#)

[X](#)

[Facebook](#)

[Threads](#)

[YouTube](#)

Georgetown University  
37th and O Streets, N.W.  
Washington, D.C. 20057  
P. 202-687-0100



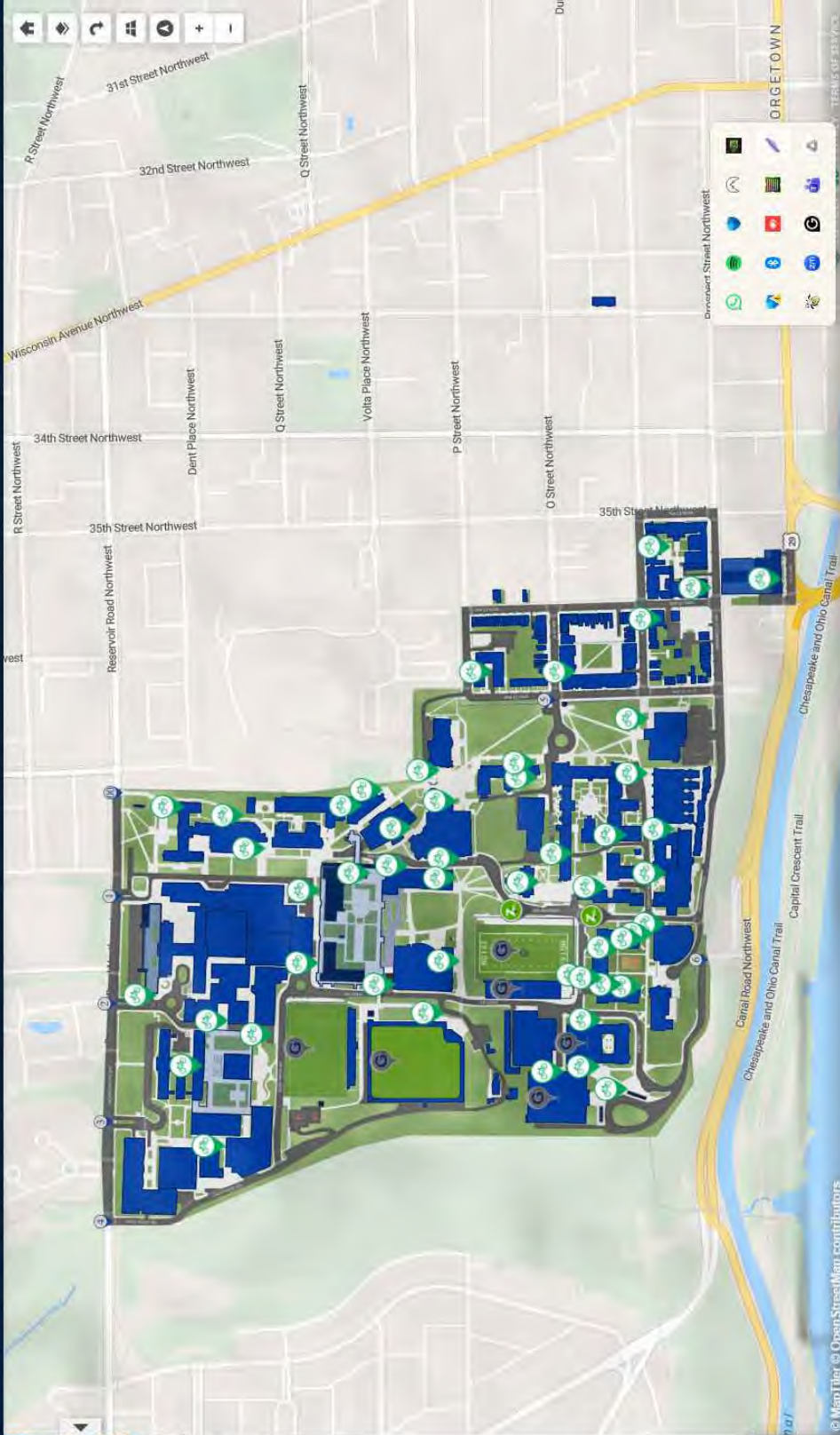


**Tours**

## Locations

- 
- Bike Parking
  - Bike Parking - 55 H
  - Bike Parking - Alumni Square
  - Bike Parking - Arrupe Hall
  - Bike Parking - Arrupe Outside
  - Bike Parking - Breezeway- Ryan & Isaac Hall
  - Bike Parking - Bus Turnaround
  - Bike Parking - Car Barn
  - Bike Parking - Concentrated Care Center 1, 2 & 3
  - Bike Parking - Copley Hall
  - Bike Parking - Copley Hall
  - Bike Parking - Darnall Hall
  - Bike Parking - Darnall Hall
  - Bike Parking - Garage 4

3700 O Street, NW, Washington, D.C. 20057  
 Phone: (202) 687-0100



## *Bicycling Information for Students*



### Bringing Your Bike to Georgetown

Georgetown encourages students to bring bicycles to campus as a mode of transportation and recreation. Biking is also a good alternative to personal cars, which students are not allowed to bring to campus.

Expand the headings below for more information about biking on campus!

#### Finding a Bike



#### Registering Your Bike



### Parking Your Bike at Georgetown

#### Bicycle Parking Locations: Map and Description



#### Proper Bicycle Locking



### Riding Your Bike at Georgetown

#### Riding Safely



#### Exploring DC by Bike



#### Capital Bikeshare



#### Student Groups & Further Involvement



### When You Leave the Hilltop...

#### Recycling Your Bike



### Additional Resources

#### General Bicycling Resources



#### DC Bicycling News



#### Bicycling Tips and Safety



#### Bicycling Maps



[About Us](#)

[Sustainability at Georgetown University](#)

[News & Publications](#)

[Events Calendar](#)

[Resources](#)



## Sustainability at Georgetown University

---

*GEORGETOWN UNIVERSITY*

Office of Sustainability

E. [sustainability@georgetown.edu](mailto:sustainability@georgetown.edu)

[Privacy Policy](#)

[Copyright](#)

[Accessibility](#)

[Notice of Non-Discrimination](#)

© 2025 *Sustainability at Georgetown University*