



**J STREET**  
development  
1025 THOMAS JEFFERSON ST  
WASHINGTON, DC 20007

RENDERING - AERIAL  
1109 CONGRESS STREET, NE  
Washington DC

**N NELSON**  
ARCHITECTS

1003 K STREET, NW  
WASHINGTON, DC 20001

TEL 202.857.4300

DECEMBER 16, 2016 - PUD SUBMISSION

TEL 202.737.4806  
© 2016 NELSON ARCHITECTS, PC

ZONING COMMISSION  
District of Columbia

CASE NO. 16-13  
EXHIBIT NO. 5212

A2.01



KENNEDY WARREN APARTMENTS



WOODWARD & LOTHROP WAREHOUSE



HECHTS WAREHOUSE APARTMENTS



**J STREET**  
development  
1025 THOMAS JEFFERSON ST  
WASHINGTON, DC 20007

RENDERING - STREET LEVEL  
1109 CONGRESS STREET, NE  
Washington DC

**N NELSON**  
ARCHITECTS  
1003 K STREET, NW  
WASHINGTON, DC 20001

TEL 202.857.4300

DECEMBER 16, 2016 - PUD SUBMISSION

TEL 202.737.4800

© 2016 NELSON ARCHITECTS, PC

A2.02





**J STREET**  
development  
1025 THOMAS JEFFERSON ST  
WASHINGTON, DC 20007

RENDERING - 3RD STREET LOOKING SOUTHWEST  
1109 CONGRESS STREET, NE  
Washington DC

**N NELSON**  
ARCHITECTS  
1003 K STREET, NW  
WASHINGTON, DC 20001

TEL 202.857.4300

DECEMBER 16, 2016 - PUD SUBMISSION

TEL 202.737.4800

© 2016 NELSON ARCHITECTS, PC

A2.04



**J STREET**  
development  
1025 THOMAS JEFFERSON ST  
WASHINGTON, DC 20007

RENDERING - ALLEY VIEW FROM TOWNHOUSE REAR YARDS  
1109 CONGRESS STREET, NE  
Washington DC

**N NELSON**  
ARCHITECTS  
1003 K STREET, NW  
WASHINGTON, DC 20001

TEL 202.857.4300

DECEMBER 16, 2016 - PUD SUBMISSION

TEL 202.737.4800

© 2016 NELSON ARCHITECTS, PC

A2.05



**J** STREET  
development  
1025 THOMAS JEFFERSON ST  
WASHINGTON, DC 20007

RENDERING - ALLEY VIEW LOOKING SOUTH  
1109 CONGRESS STREET, NE  
Washington DC

**N** NELSON  
ARCHITECTS

1003 K STREET, NW  
WASHINGTON, DC 20001

TEL 202.857.4300

DECEMBER 16, 2016 - PUD SUBMISSION

TEL 202.737.4800

© 2016 NELSON ARCHITECTS, PC

**A2.05A**



**J STREET**  
development  
1025 THOMAS JEFFERSON ST  
WASHINGTON, DC 20007

RENDERING - AERIAL  
1109 CONGRESS STREET, NE  
Washington DC

**N NELSON**  
ARCHITECTS  
1003 K STREET, NW  
WASHINGTON, DC 20001

TEL 202.857.4300

TEL 202.737.4800

© 2016 NELSON ARCHITECTS, PC







**J STREET**  
development  
1025 THOMAS JEFFERSON ST  
WASHINGTON, DC 20007

WEST ELEVATION (CONGRESS STREET)  
1109 CONGRESS STREET, NE  
Washington DC

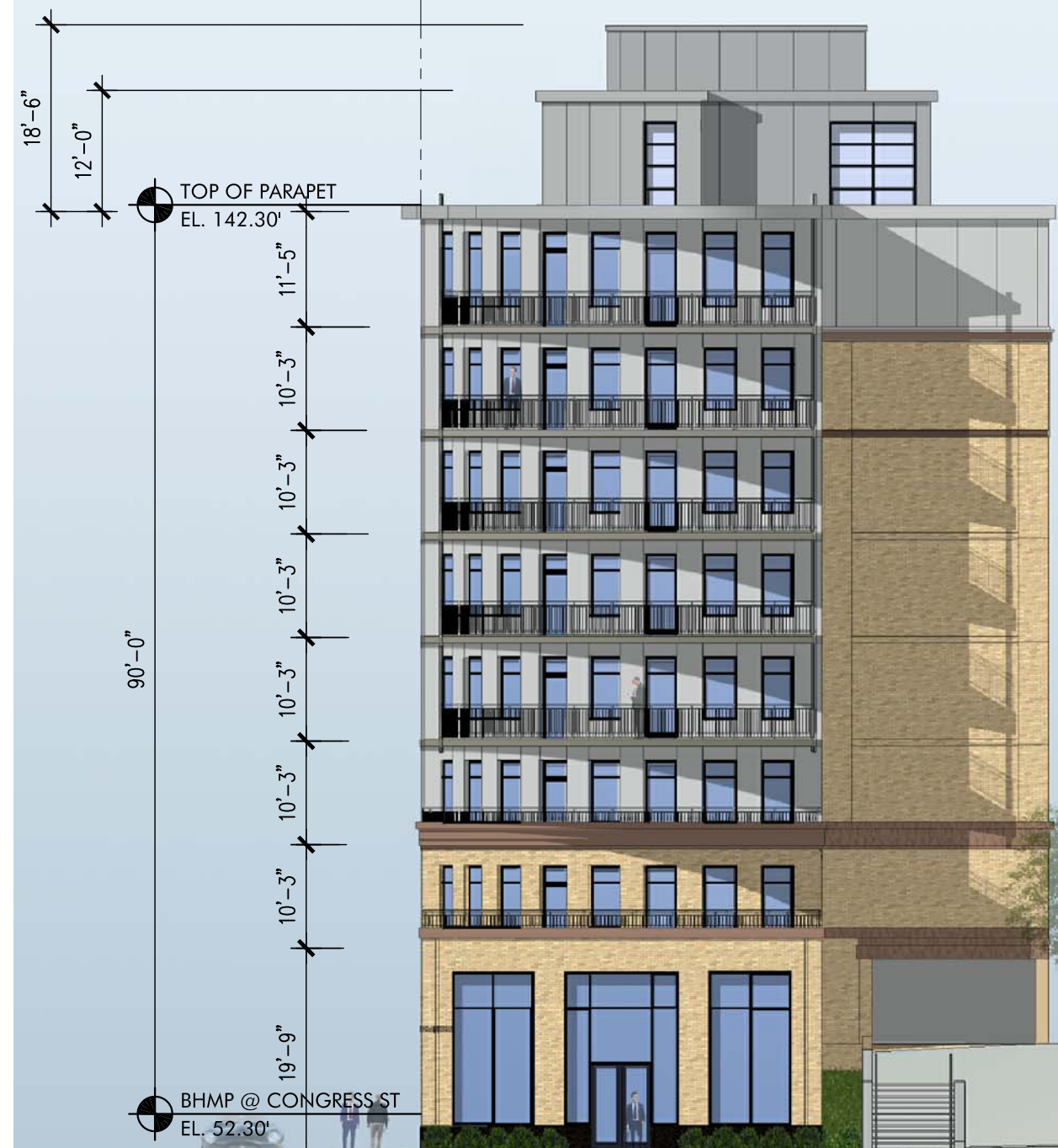
0 2 4 8 16  
SCALE: 1/16" = 1'-0"

**N NELSON**  
ARCHITECTS  
1003 K STREET, NW  
WASHINGTON, DC 20001



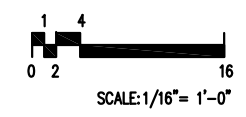


NORTH ELEVATION



SOUTH (L STREET) ELEVATION

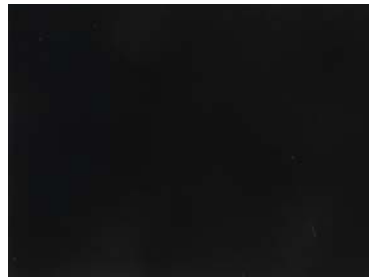
NORTH and SOUTH (L STREET) ELEVATIONS  
 1109 CONGRESS STREET, NE  
 Washington DC



**J STREET**  
 development  
 1025 THOMAS JEFFERSON ST  
 WASHINGTON, DC 20007

**N NELSON**  
 ARCHITECTS  
 1003 K STREET, NW  
 WASHINGTON, DC 20001

ALTERNATE WINDOW COLOR: BLACK



WINDOWS:  
METAL FRAME,  
PRE-FINISHED PAINT,  
AWNING OR CASEMENT OPERATION,  
CLEAR LOW-E GLAZING,  
DARK BLUE  
ALTERNATE COLOR: BLACK



WALL PANELS:  
METAL PANEL,  
PRE-FINISHED PAINT,  
LIGHT GRAY



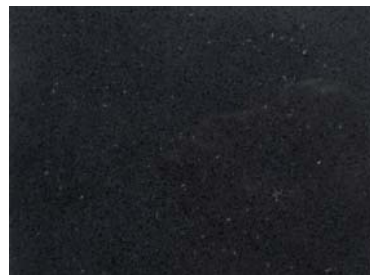
COLUMNS & BALCONY  
FASCIA :  
METAL,  
PRE-FINISHED PAINT,  
LIGHT GRAY

BRICK:  
GOLDEN BUFF,  
SMOOTH,  
TERRA COTTA RED MORTAR



RAILINGS:  
METAL,  
DARK BLUE  
ALTERNATE: BLACK

BELTCOURSE:  
CAST STONE,  
TERRA COTTA RED



SPRANDREL:  
METAL,  
LIGHT GRAY

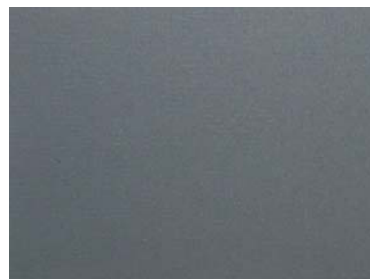
BASE:  
GRANITE,  
POLISHED,  
BLACK

GENERAL NOTES:

1. Flexibility is requested to vary the final selection of exterior materials within the general material types proposed, based on availability at the time of construction. Quality of materials will not be reduced.
2. Ground floor retail bay elevations are illustrative & intended to describe the character & scale for the base of the building.
3. Residential exhaust vents to be integrated into final facade designs



ALTERNATE WINDOW COLOR: BLACK



EQUIPMENT SCREEN:  
METAL PANEL,  
PRE-FINISHED PAINT,  
MEDIUM GRAY



WINDOWS:  
METAL FRAME,  
PRE-FINISHED PAINT,  
AWNING OPERATION,  
CLEAR LOW-E GLAZING,  
DARK BLUE  
ALTERNATE COLOR: BLACK



WALL PANELS:  
METAL PANEL,  
PRE-FINISHED PAINT,  
LIGHT GRAY



BRICK:  
GOLDEN BUFF,  
SMOOTH,  
TERRA COTTA RED MORTAR



BELTCOURSE:  
CAST STONE,  
TERRA COTTA RED

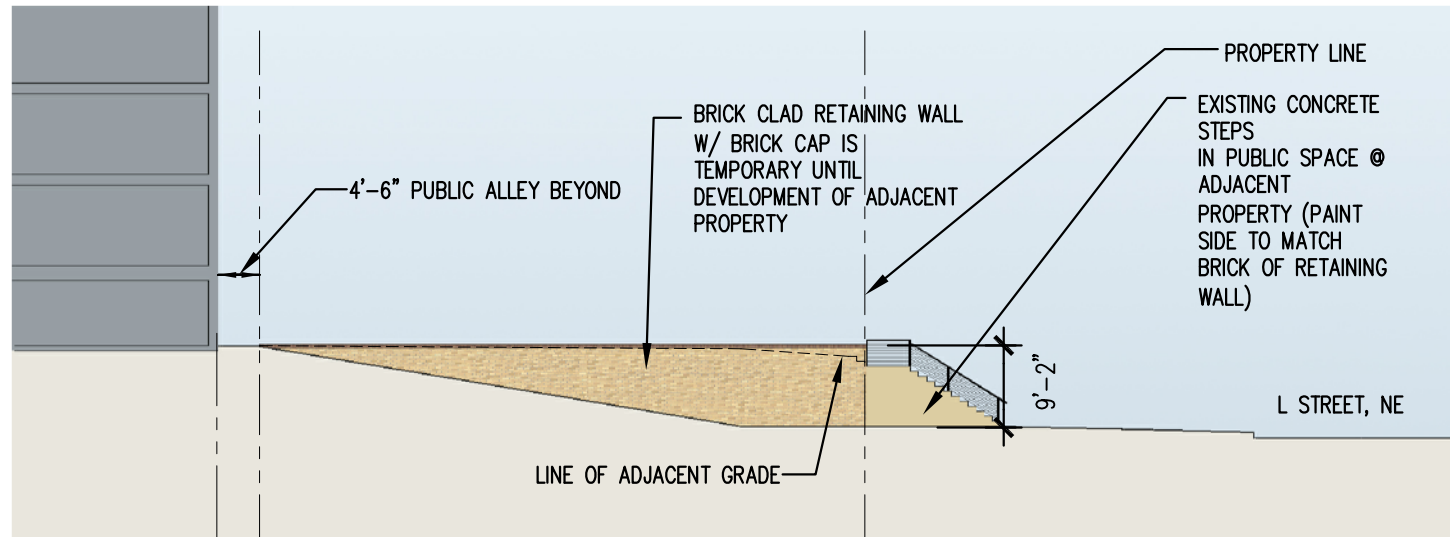
SPRANDREL:  
METAL,  
LIGHT GRAY

RAILINGS:  
METAL,  
DARK BLUE  
ALTERNATE: BLACK

GENERAL NOTES:

1. Flexibility is requested to vary the final selection of exterior materials within the general material types proposed, based on availability at the time of construction. Quality of materials will not be reduced.
2. Ground floor retail bay elevations are illustrative & intended to describe the character & scale for the base of the building.
3. Residential exhaust vents to be integrated into final facade designs

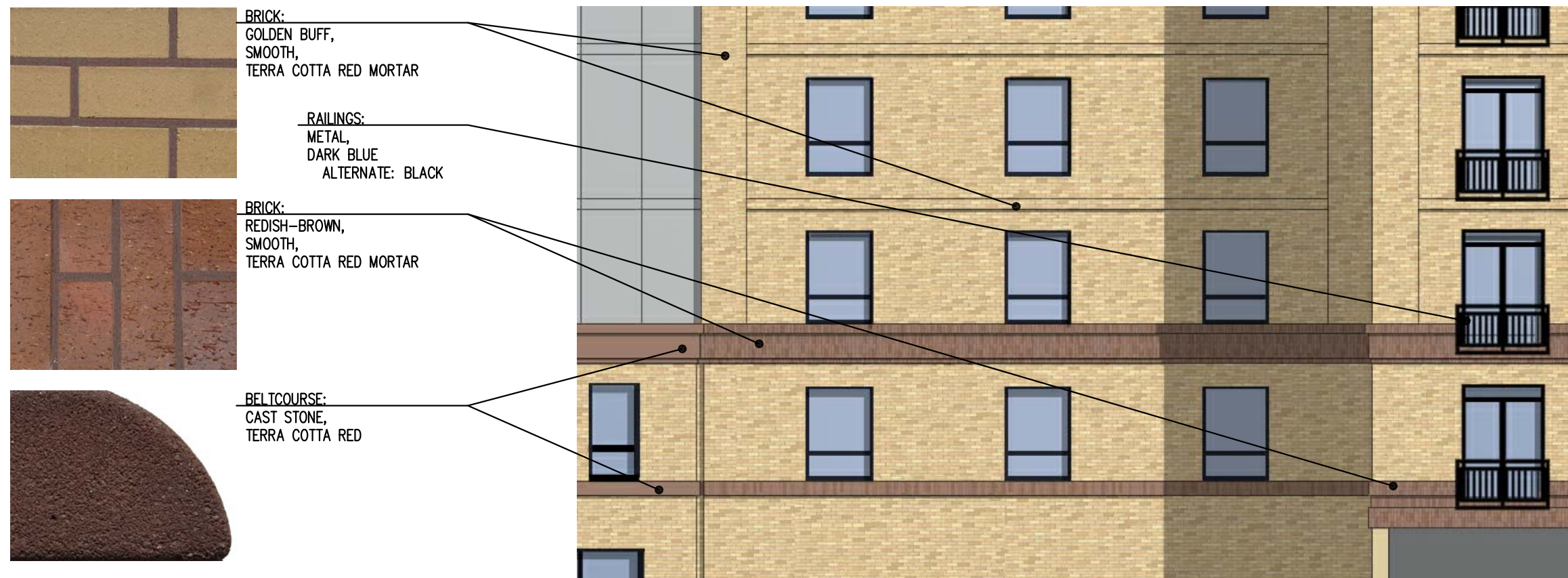




GENERAL NOTES:

1. Flexibility is requested to vary the final selection of exterior materials within the general material types proposed, based on availability at the time of construction. Quality of materials will not be reduced.
2. Ground floor retail bay elevations are illustrative & intended to describe the character & scale for the base of the building.
3. Residential exhaust vents to be integrated into final facade designs

ELEVATION OF 5 FT EASEMENT RETAINING WALL, LOOKING EAST



EXTERIOR MATERIALS FOR SECONDARY FACADES  
1109 CONGRESS STREET, NE  
Washington DC