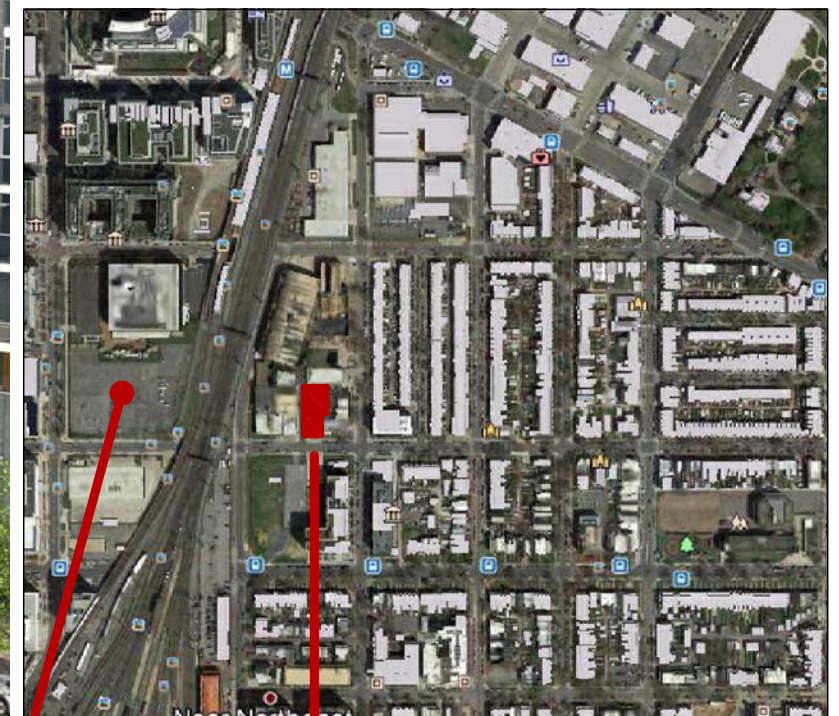
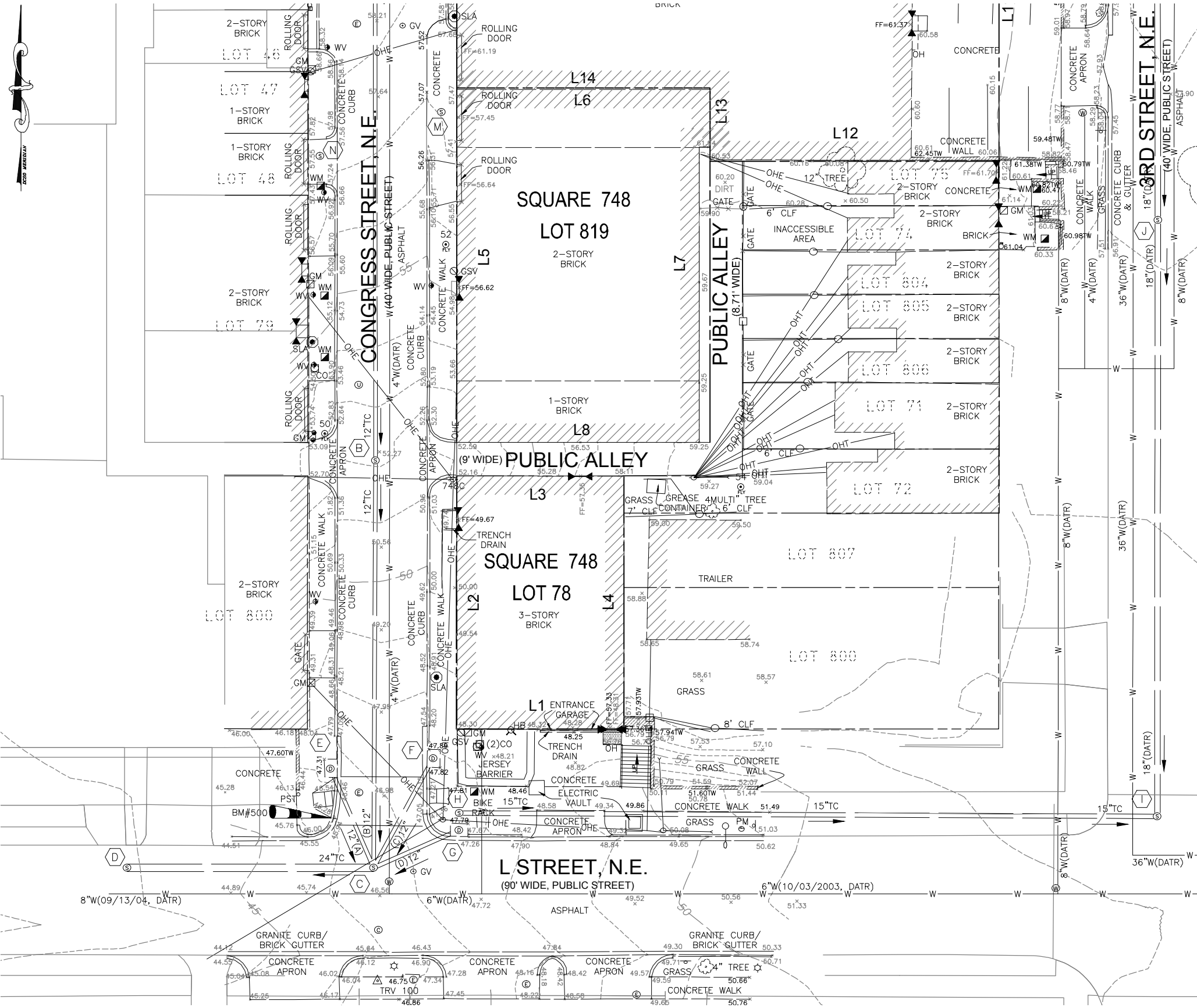


Storey Park 1005 First Street, NE



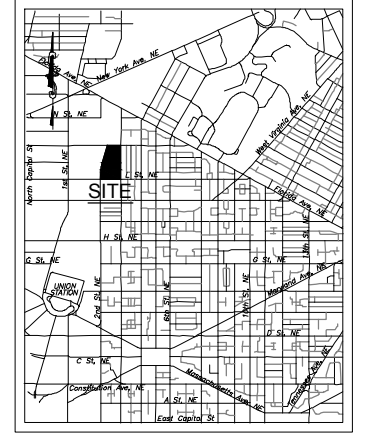
300 UNITS; 350,000 SF OFFICE; 65,000 SF RETAIL; PENDING DEVELOPMENT

SITE

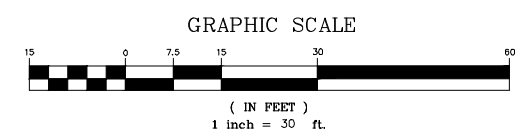


LEGEND:

- TREE
- GRATE INLET
- STORM MANHOLE
- DRAIN
- ROOF DRAIN
- POST
- SINGLE POST SIGN
- STREET LIGHT
- LIGHT POLE
- LAMP
- POWER POLE
- ELECTRIC MANHOLE
- ELECTRIC METER
- ELECTRIC BOX
- GROUND SHOT
- TOP OF WALL ELEVATION
- SANITARY SEWER MANHOLE
- CLEAN OUT
- WATER METER
- WATER VALVE
- WATER MANHOLE
- HOSE BIBB
- SIAMESE CONNECTION
- GAS VALVE
- GAS METER
- GAS SHUTOFF VALVE
- BOLLARD
- COMMUNICATION MANHOLE
- UTILITY MANHOLE
- TRAVERSE
- BENCHMARK
- CURB AND GUTTER
- OVERHEAD ELECTRIC LINE
- OVERHEAD TELEPHONE LINE
- OVERHANG
- WATERLINE
- GUY WIRE
- CHAINLINK FENCE
- WOOD FENCE
- DATA ACCORDING TO RECORDS
- TERRACOTTA PIPE
- FINISH FLOOR ELEVATION
- WIDTH DOOR
- BUILDING
- WALL
- METAL OVERHEAD



VICINITY MAP
NOT TO SCALE



J STREET
development
1025 THOMAS JEFFERSON ST
WASHINGTON, DC 20007

EXISTING CONDITIONS PLAN
1109 CONGRESS STREET, NE
Washington DC

AMT LLC
CONSULTING ENGINEERS
AND LAND SURVEYORS

10 G STREET, NE, SUITE 430
WASHINGTON, DC, 20002
PH: (202) 289-4545
FAX: (202) 289-5051

N NELSON
ARCHITECTS
1003 K STREET, NW
WASHINGTON, DC 20001













J STREET
development
1025 THOMAS JEFFERSON ST
WASHINGTON, DC 20007

AERIAL RENDERING
1109 CONGRESS STREET, NE
Washington DC

N NELSON
ARCHITECTS
1003 K STREET, NW
WASHINGTON, DC 20001

TEL 202.857.4300

NOVEMBER 1, 2016 - PUD SUBMISSION

TEL 202.737.4800

© 2016 NELSON ARCHITECTS, PC

A2.01



J STREET
development
1025 THOMAS JEFFERSON ST
WASHINGTON, DC 20007

STREET VIEW RENDERING
1109 CONGRESS STREET, NE
Washington DC

N NELSON
ARCHITECTS
1003 K STREET, NW
WASHINGTON, DC 20001

TEL 202.857.4300

NOVEMBER 1, 2016 - PUD SUBMISSION

TEL 202.737.4800

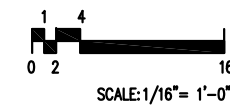
© 2016 NELSON ARCHITECTS, PC

A2.02



J STREET
development
1025 THOMAS JEFFERSON ST
WASHINGTON, DC 20007

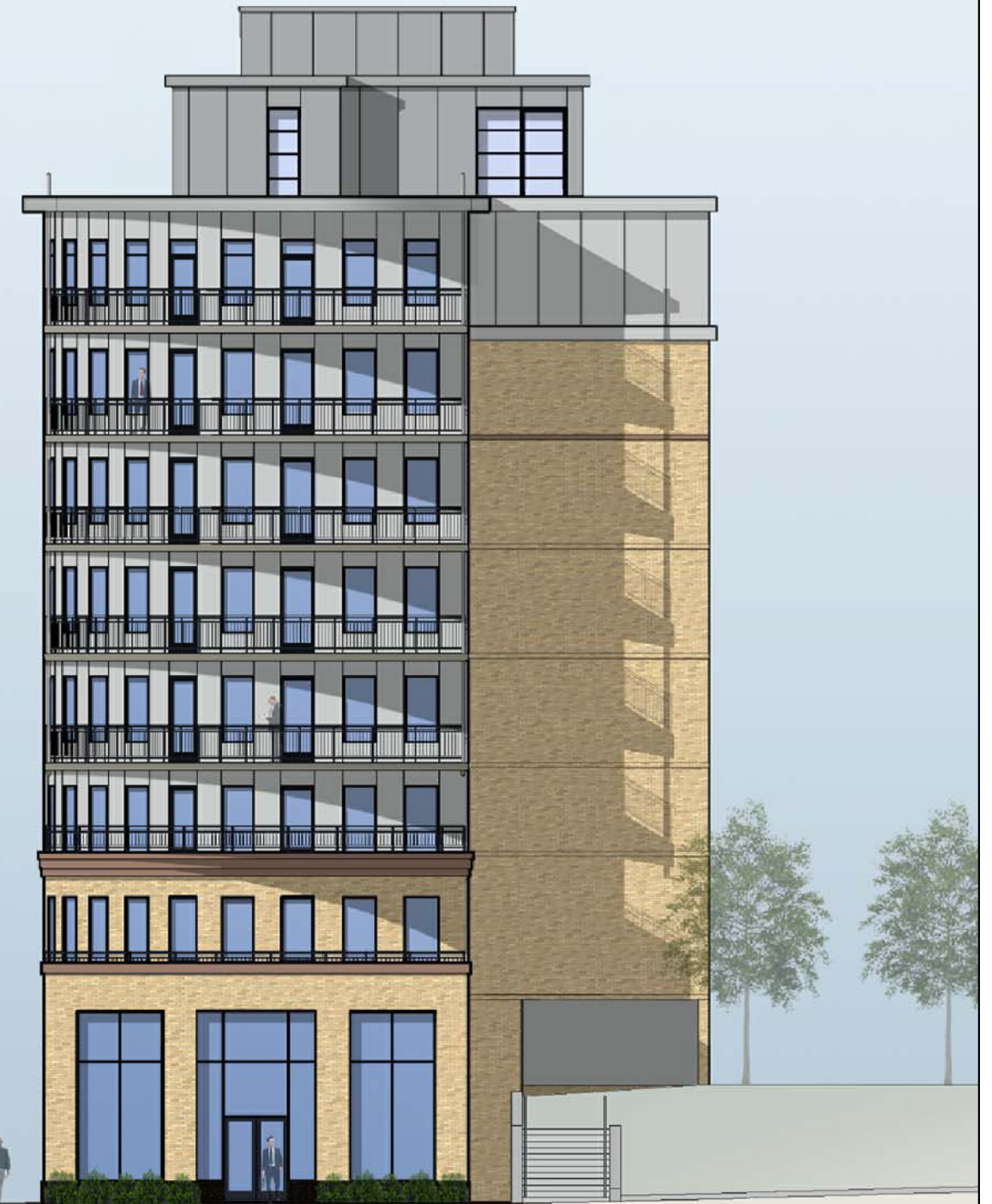
WEST ELEVATION (CONGRESS STREET)
1109 CONGRESS STREET, NE
Washington DC



N NELSON
ARCHITECTS
1003 K STREET, NW
WASHINGTON, DC 20001



NORTH ELEVATION



SOUTH (L STREET) ELEVATION

NORTH and SOUTH (L STREET) ELEVATIONS
 1109 CONGRESS STREET, NE
 Washington DC

