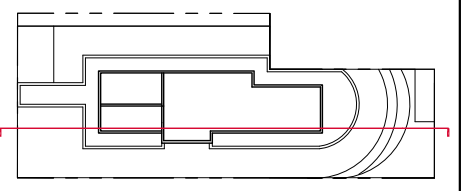


- KEY
- DWELLING UNITS
 - COMMON AREA
 - LOBBY/AMENITY
 - RETAIL / PDR
 - PARKING
 - BUILDING SERVICE
 - GREEN ROOF



TOP OF PARAPET
EL. 142.59'

BHMP @ CONGRESS ST
EL. 52.59'

90'-0"

18'-6"
12'-0"
12'-0"

PH

L8

L7

L6

L5

L4

L3

L2

L1

L1

L1

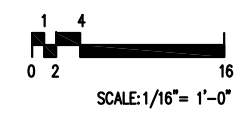
B1

B1

L STREET

J STREET
development
1025 THOMAS JEFFERSON ST
WASHINGTON, DC 20007

LONGITUDINAL SECTION
1109 CONGRESS STREET, NE
Washington DC



N NELSON
ARCHITECTS

1003 K STREET, NW
WASHINGTON, DC 20001

TEL 202.857.4300

JUNE 7, 2016 - PUD SUBMISSION

TEL 202.737.4800
© 2016 NELSON ARCHITECTS, PC

A5.02