



1900 HALF STREET

Square 666 Lot 15 / 1900 Half Street SW, Washington, DC

Owner / Developer
Douglas Development Corporation
702 H Street NW
Washington, DC 20001
202.638.6300




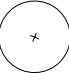
Architects & Planners
Antunovich Associates
2200 Clarendon Blvd, Suite 1150
Arlington, VA 22201
703.224.1126

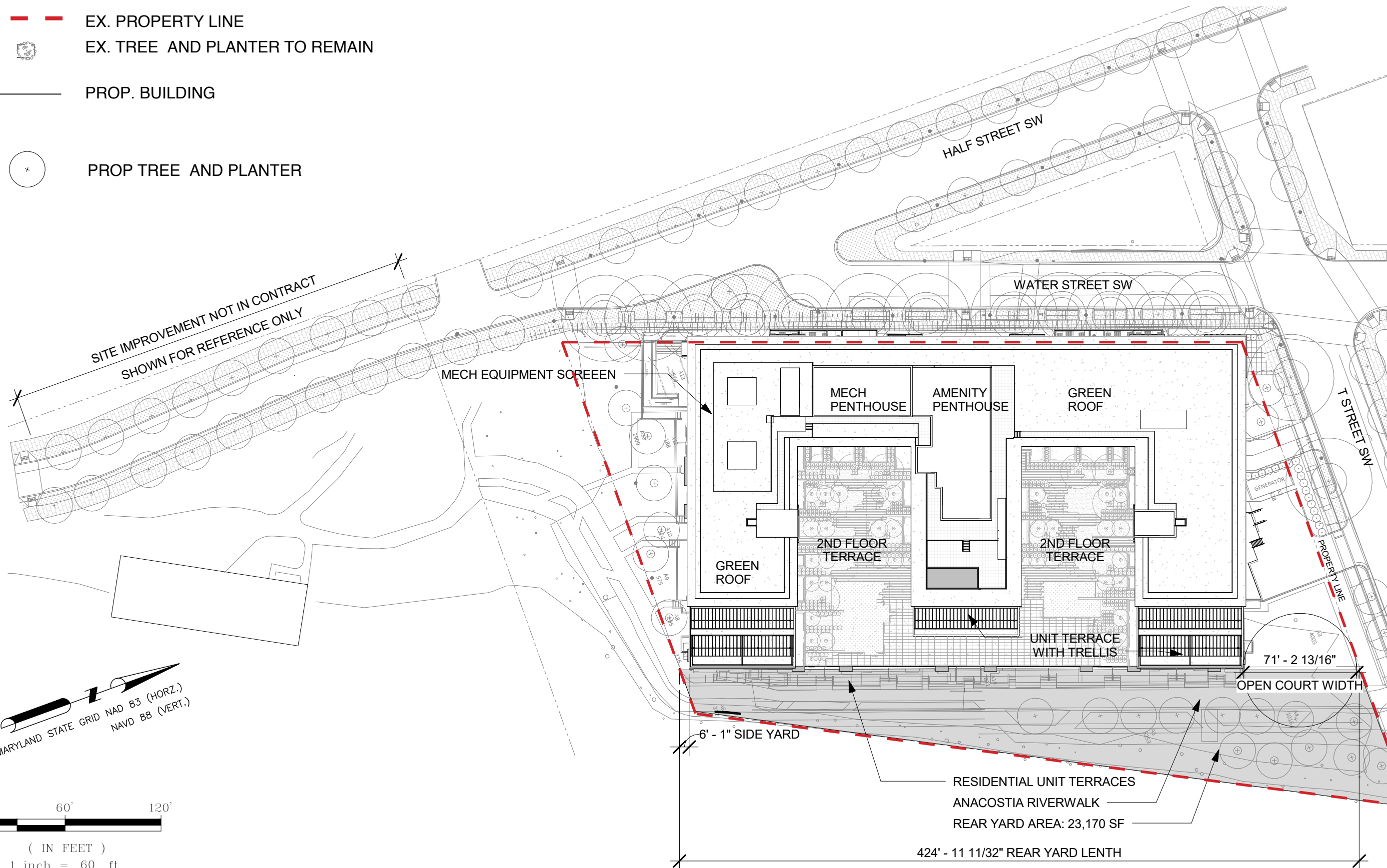
Civil Engineers
Dewberry Consultants LLC
2101 Gaither Road, Suite 340
Rockville, MD 20850
301.337.2866

Landscape Architects
Lee and Associates Inc.
638 Eye Street NW
Washington, DC 20001
202.466.6666

COMMISSION
District of Columbia
CASE NO. 16-06
EXHIBIT NO. 22D
June 08, 2016

LEGEND

-  EX. PROPERTY LINE
-  EX. TREE AND PLANTER TO REMAIN
-  PROP. BUILDING
-  PROP TREE AND PLANTER



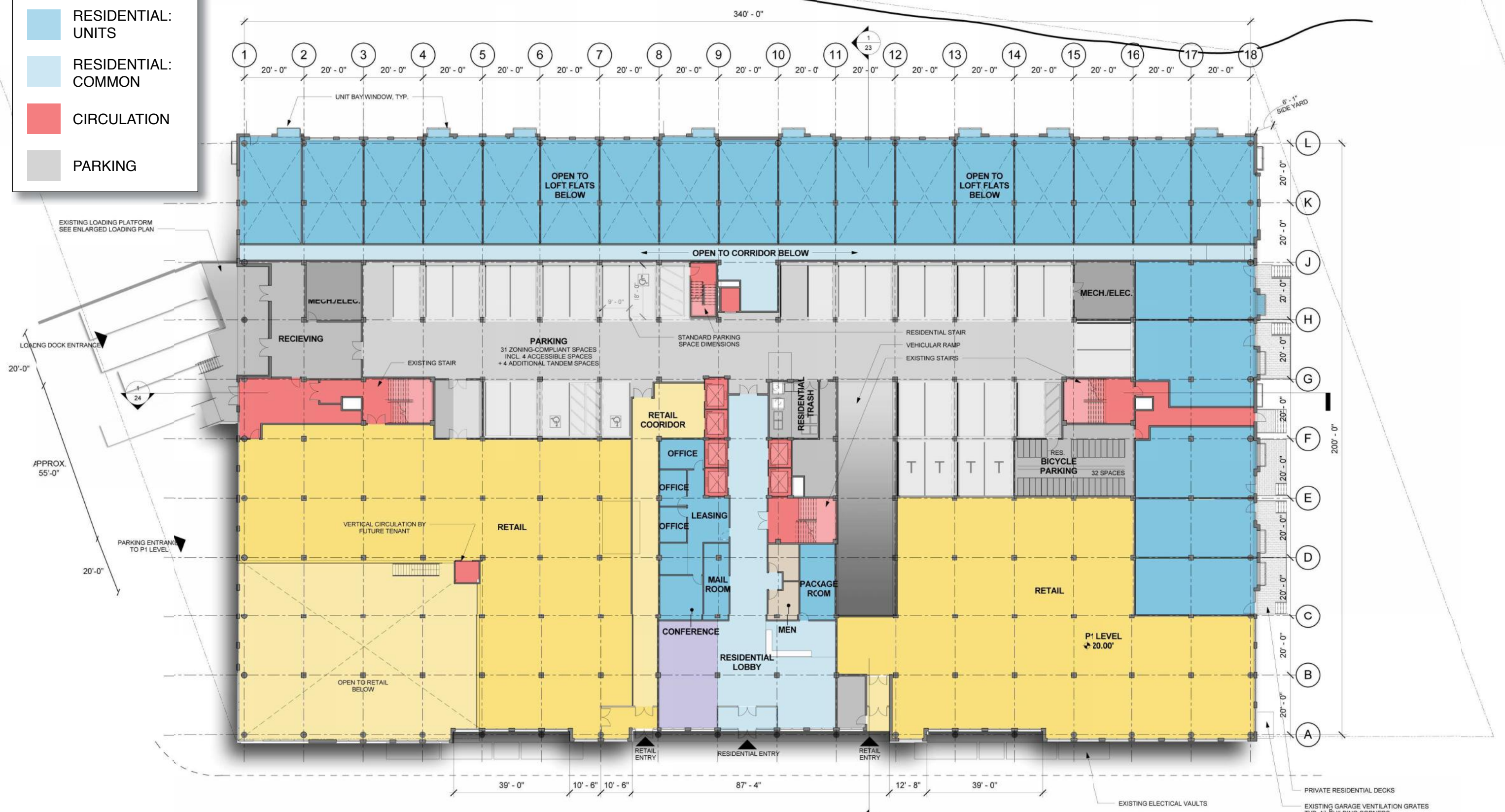
1900 HALF STREET

Square 666 Lot 15 / 1900 Half Street SW, Washington, DC · Douglas Development Corporation · Antunovich Associates © · Dewberry Consultants LLC · Lee and Associates Inc.

Proposed Site Plan

June 08, 2016

- RETAIL
- RESIDENTIAL: UNITS
- RESIDENTIAL: COMMON
- CIRCULATION
- PARKING



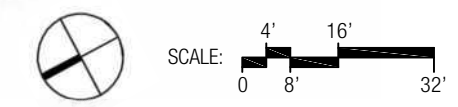
1900 HALF STREET

Square 666 Lot 15 / 1900 Half Street SW, Washington, DC · Douglas Development Corporation · Antunovich Associates © · Dewberry Consultants LLC · Lee and Associates Inc.

Ground Floor Plan

June 02, 2016

- RETAIL
- RESIDENTIAL: UNITS
- RESIDENTIAL: COMMON
- CIRCULATION
- PARKING



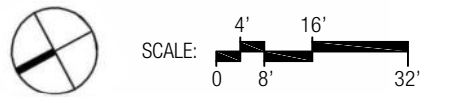
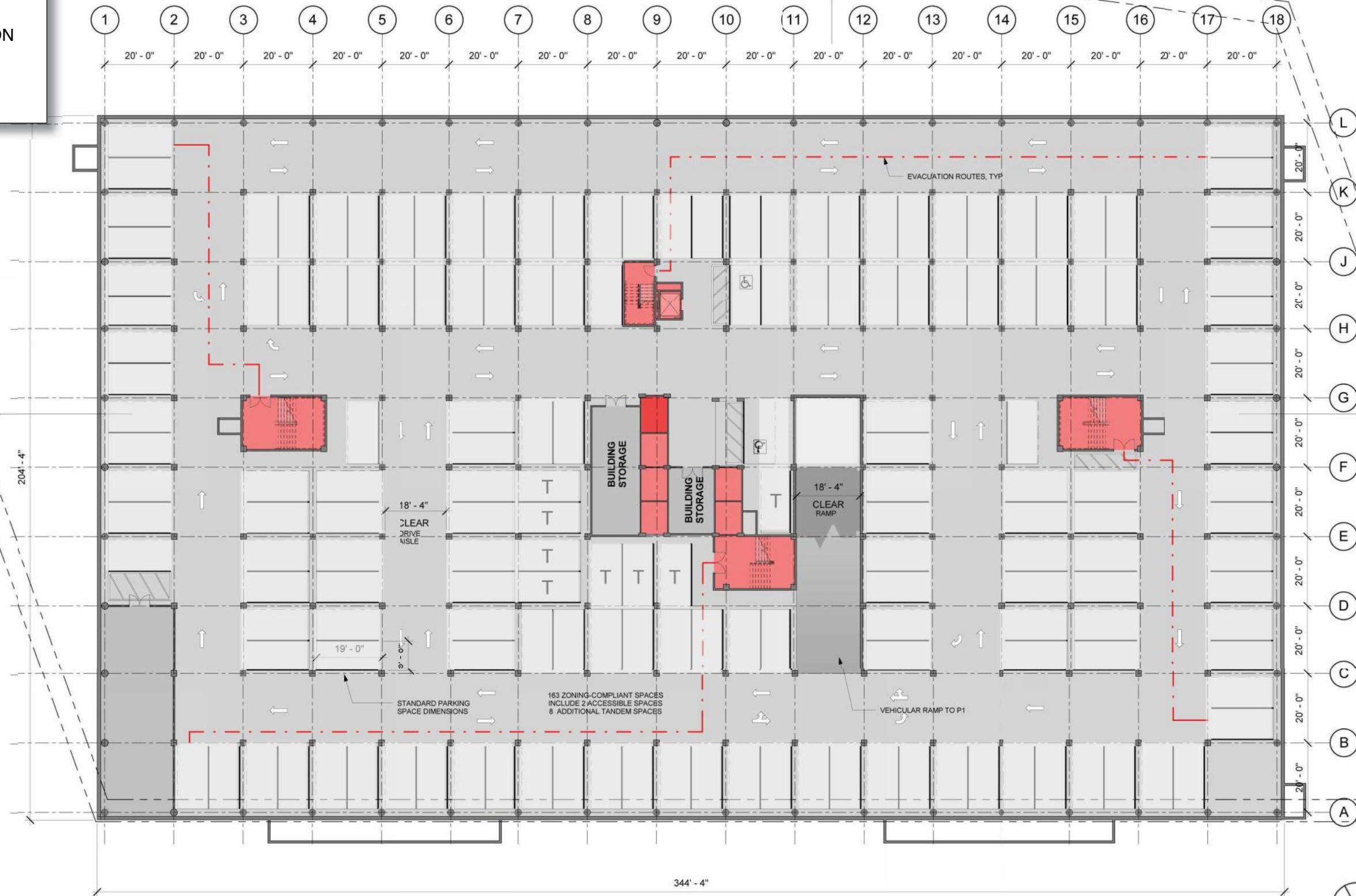
1900 HALF STREET

Square 666 Lot 15 / 1900 Half Street SW, Washington, DC · Douglas Development Corporation · Antunovich Associates © · Dewberry Consultants LLC · Lee and Associates Inc.

Floor P1 Plan

June 07, 2016

- RETAIL
- RESIDENTIAL:
COMMON
- CIRCULATION
- PARKING

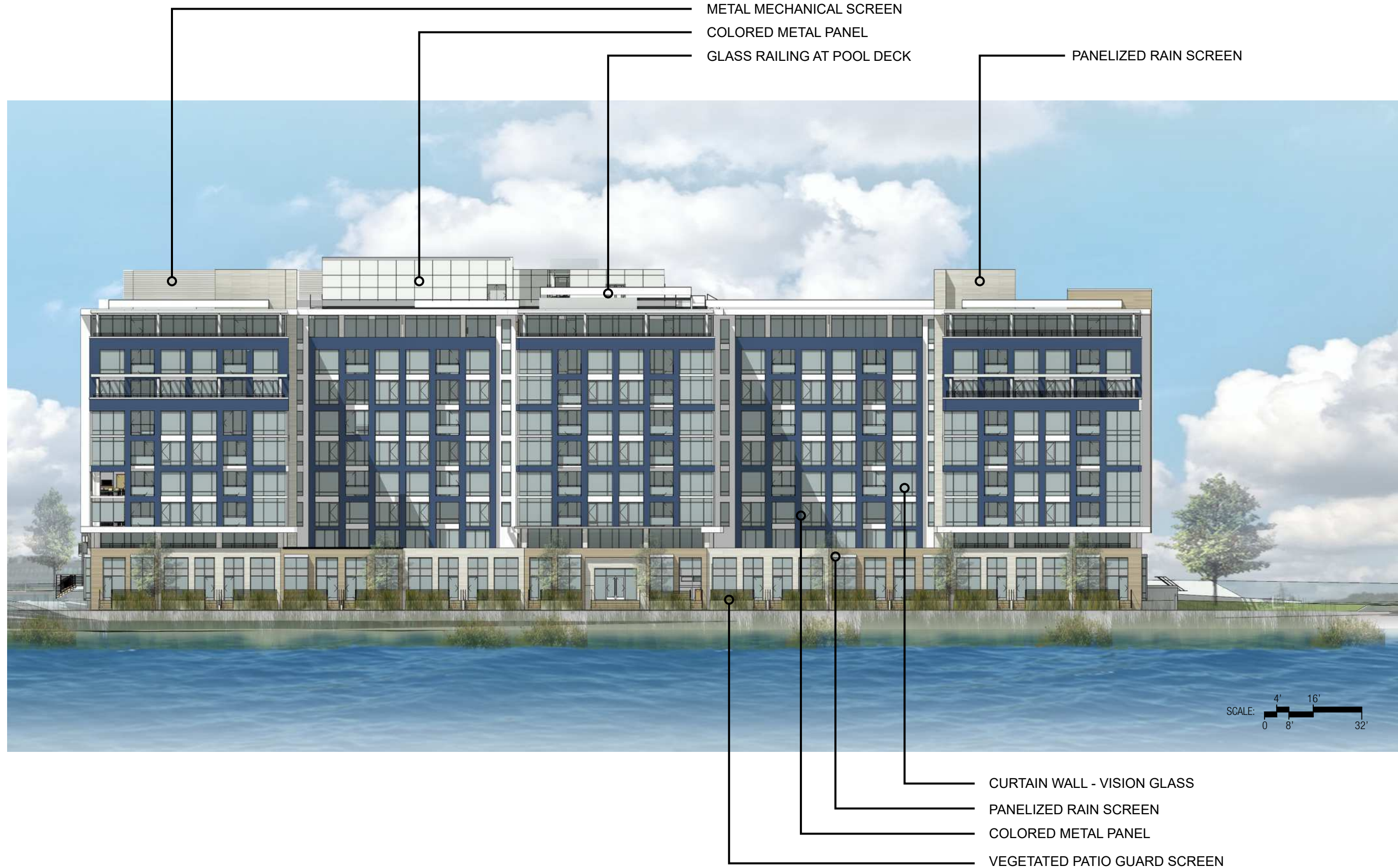


1900 HALF STREET

Square 666 Lot 15 / 1900 Half Street SW, Washington, DC · Douglas Development Corporation · Antunovich Associates © · Dewberry Consultants LLC · Lee and Associates Inc.

Floor P2 Plan

June 07, 2016

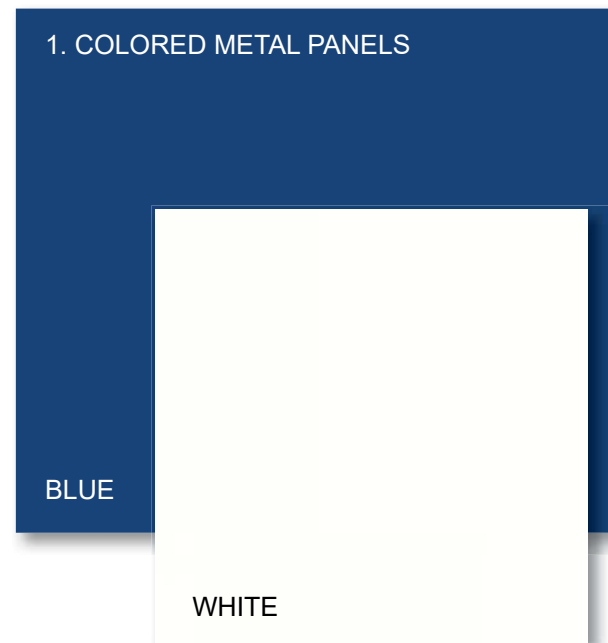


1900 HALF STREET

Square 666 Lot 15 / 1900 Half Street SW, Washington, DC · Douglas Development Corporation · Antunovich Associates © · Dewberry Consultants LLC · Lee and Associates Inc.

East Elevation

June 02, 2016

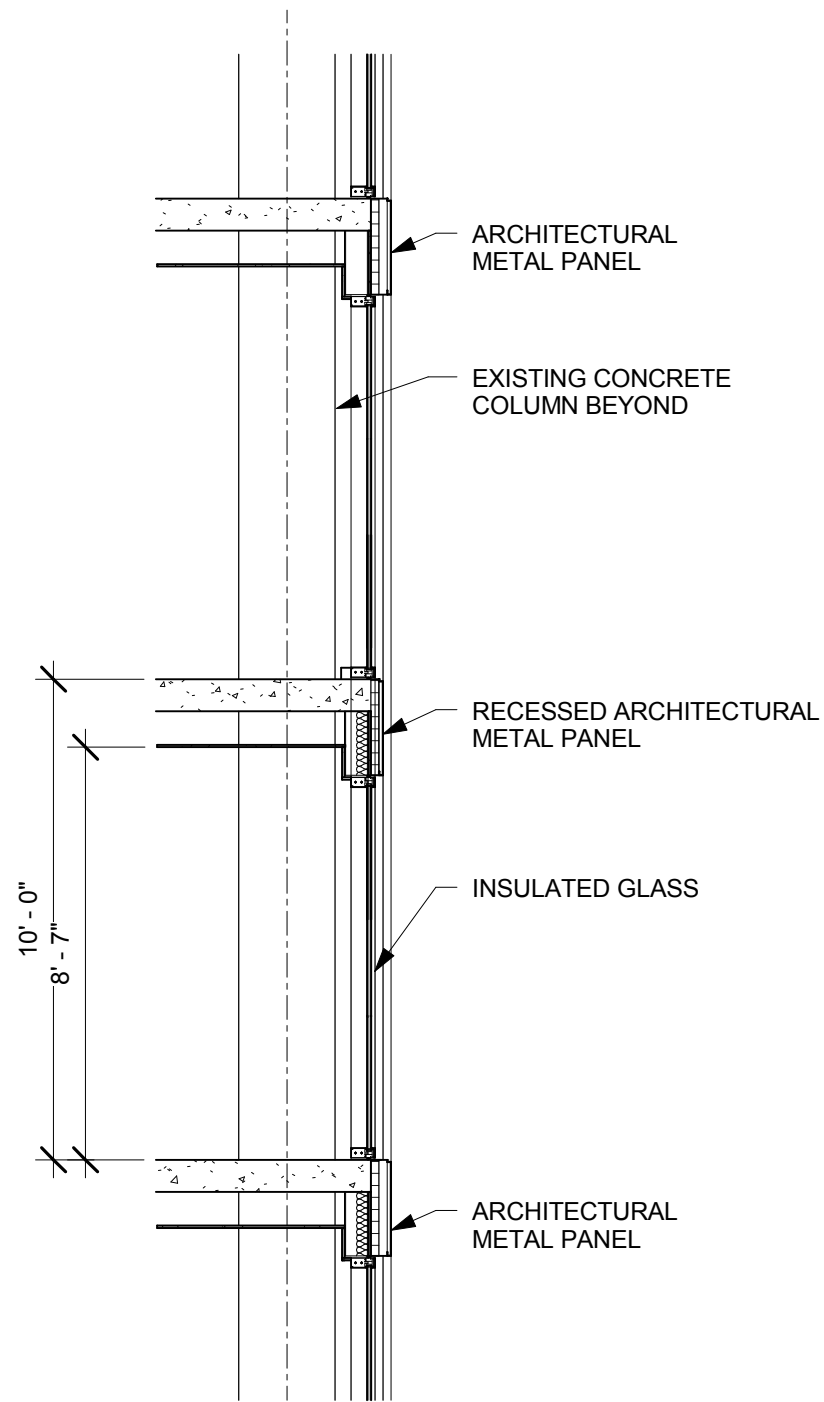


1900 HALF STREET

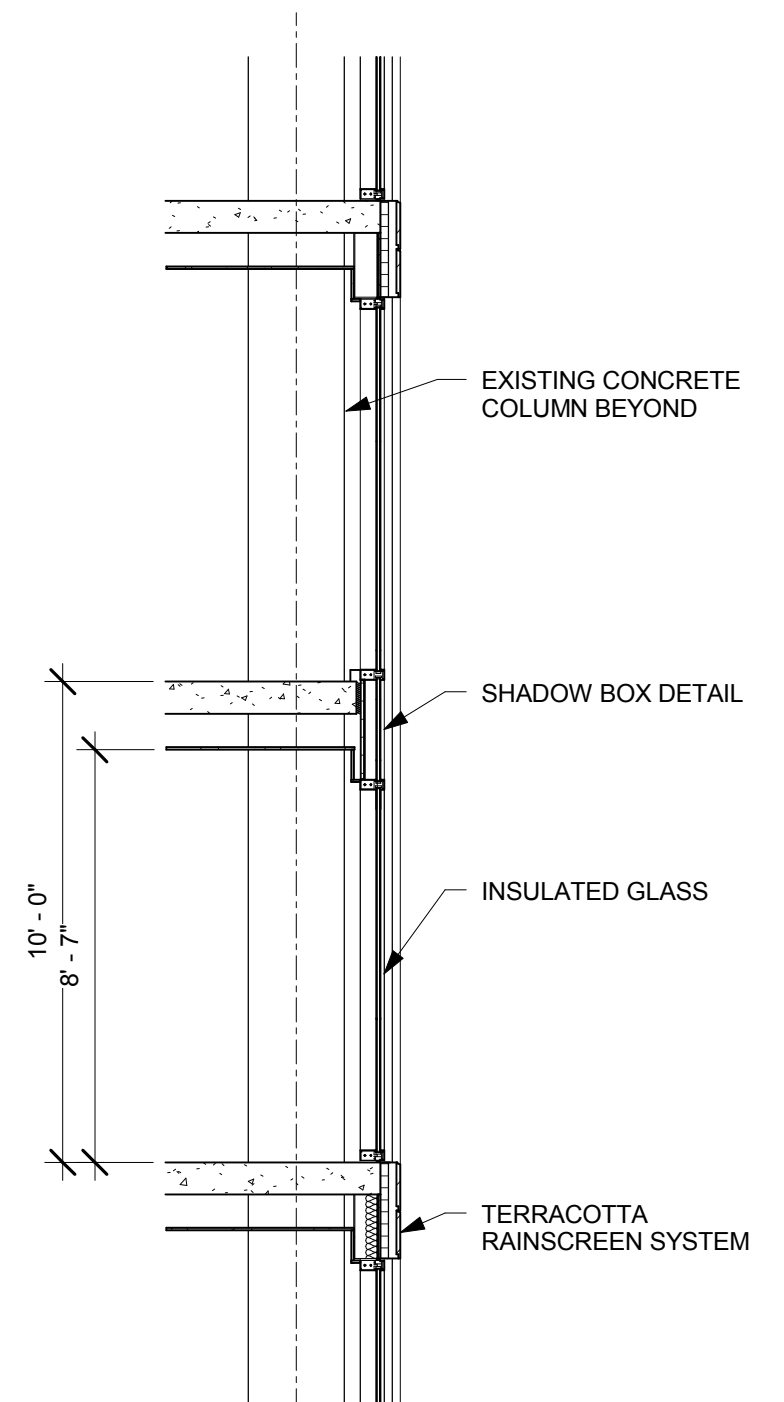
Square 666 Lot 15 / 1900 Half Street SW, Washington, DC · Douglas Development Corporation · Antunovich Associates © · Dewberry Consultants LLC · Lee and Associates Inc.

Proposed Materials

June 08, 2016



WALL SECTION A:
THROUGH METAL PANEL FACADE



WALL SECTION B:
THROUGH TERRACOTTA FACADE

1900 HALF STREET

Square 666 Lot 15 / 1900 Half Street SW, Washington, DC · Douglas Development Corporation · Antunovich Associates © · Dewberry Consultants LLC · Lee and Associates Inc.

Wall Sections

June 02, 2016



1900 HALF STREET

Square 666 Lot 15 / 1900 Half Street SW, Washington, DC · Douglas Development Corporation · Antunovich Associates © · Dewberry Consultants LLC · Lee and Associates Inc.

Overall View

June 08, 2016



1900 HALF STREET

Square 666 Lot 15 / 1900 Half Street SW, Washington, DC · Douglas Development Corporation · Antunovich Associates © · Dewberry Consultants LLC · Lee and Associates Inc.

View from the Anacostia River

June 08, 2016

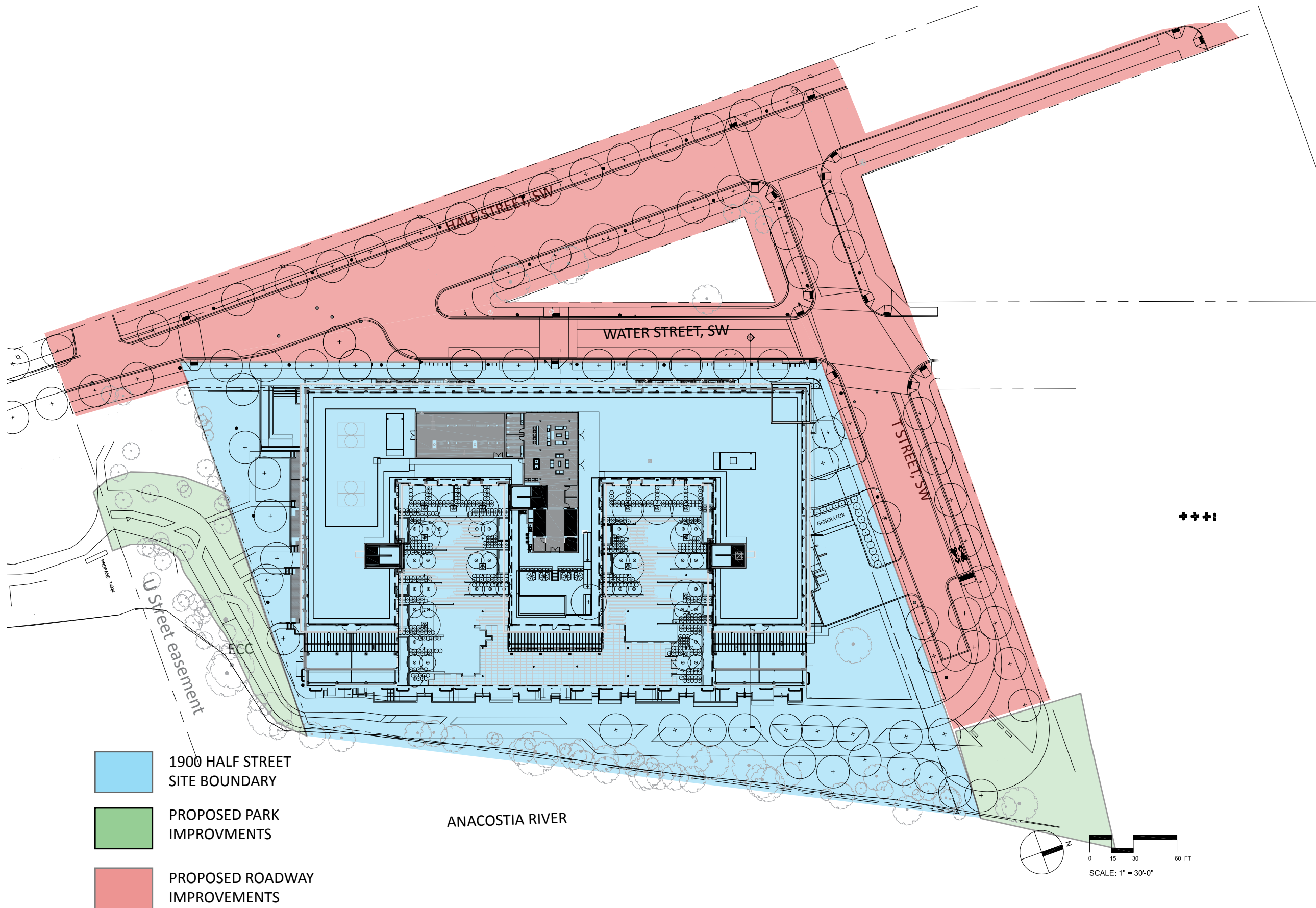


1900 HALF STREET

Square 666 Lot 15 / 1900 Half Street SW, Washington, DC · Douglas Development Corporation · Antunovich Associates © · Dewberry Consultants LLC · Lee and Associates Inc.

View from River Walk

June 02, 2016



1900 HALF STREET

DC Zoning Commission Review

Square 666 Lot 15 / 1900 Half Street SW, Washington, DC · Douglas Development Corporation · Antunovich Associates © · Lee and Associates Inc.

site plan | diagram

June 8, 2016

LEGEND

--- EX. PROPERTY LINE

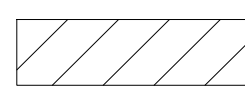
— PROP. BUILDING

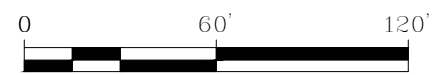
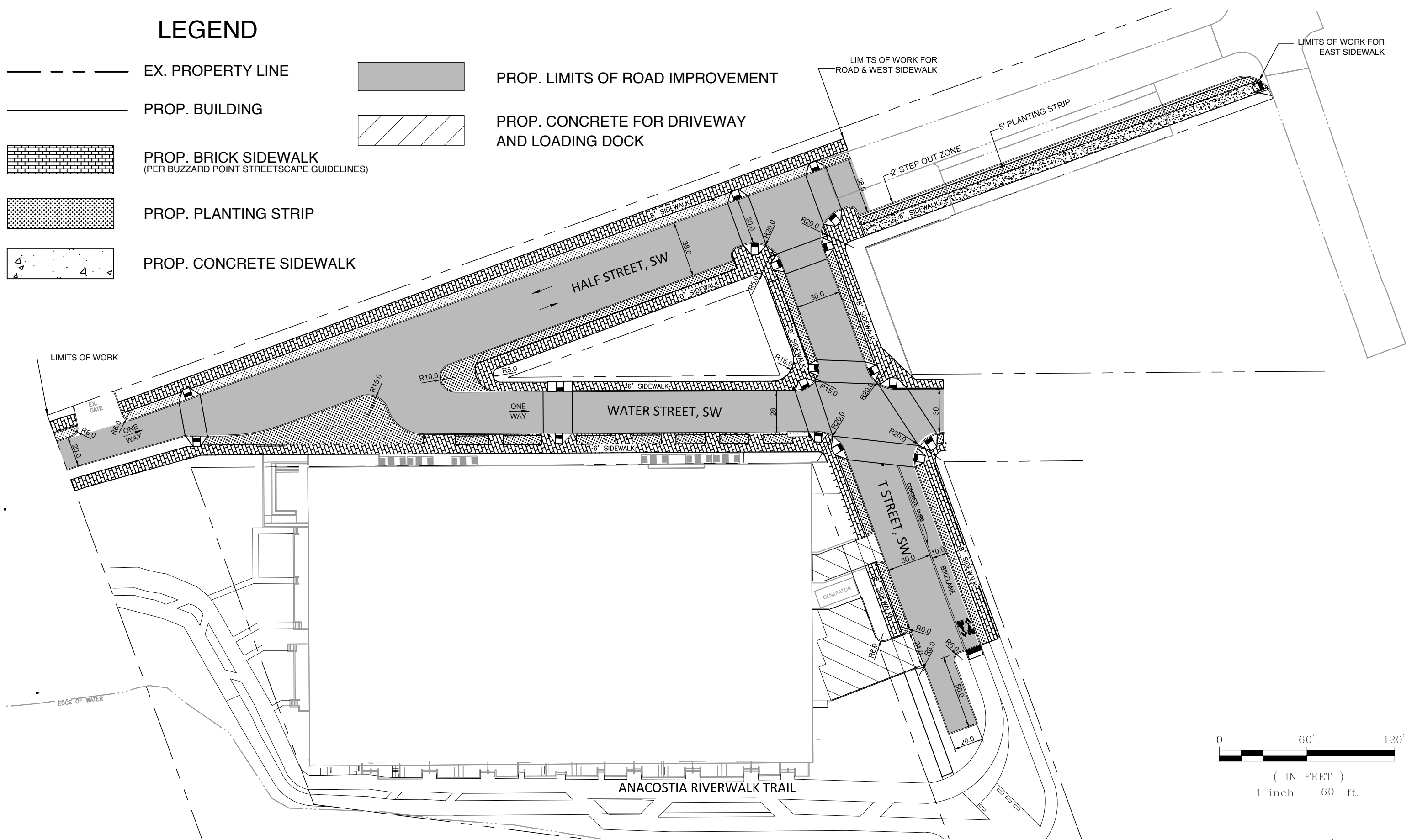
 PROP. BRICK SIDEWALK
(PER BUZZARD POINT STREETScape GUIDELINES)

 PROP. PLANTING STRIP

 PROP. CONCRETE SIDEWALK

 PROP. LIMITS OF ROAD IMPROVEMENT

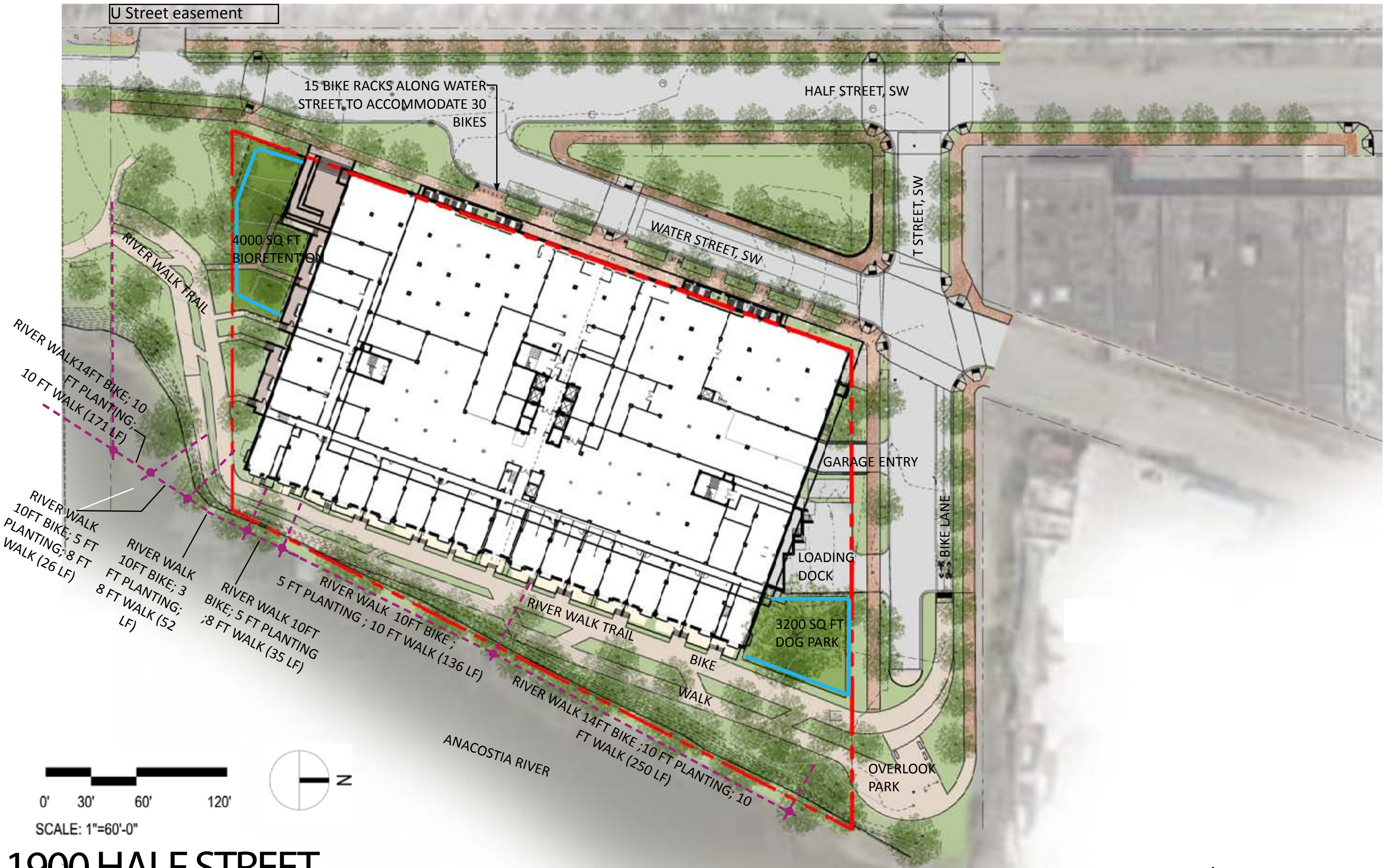
 PROP. CONCRETE FOR DRIVEWAY AND LOADING DOCK



(IN FEET)
1 inch = 60 ft.

1900 HALF STREET

public road improvements



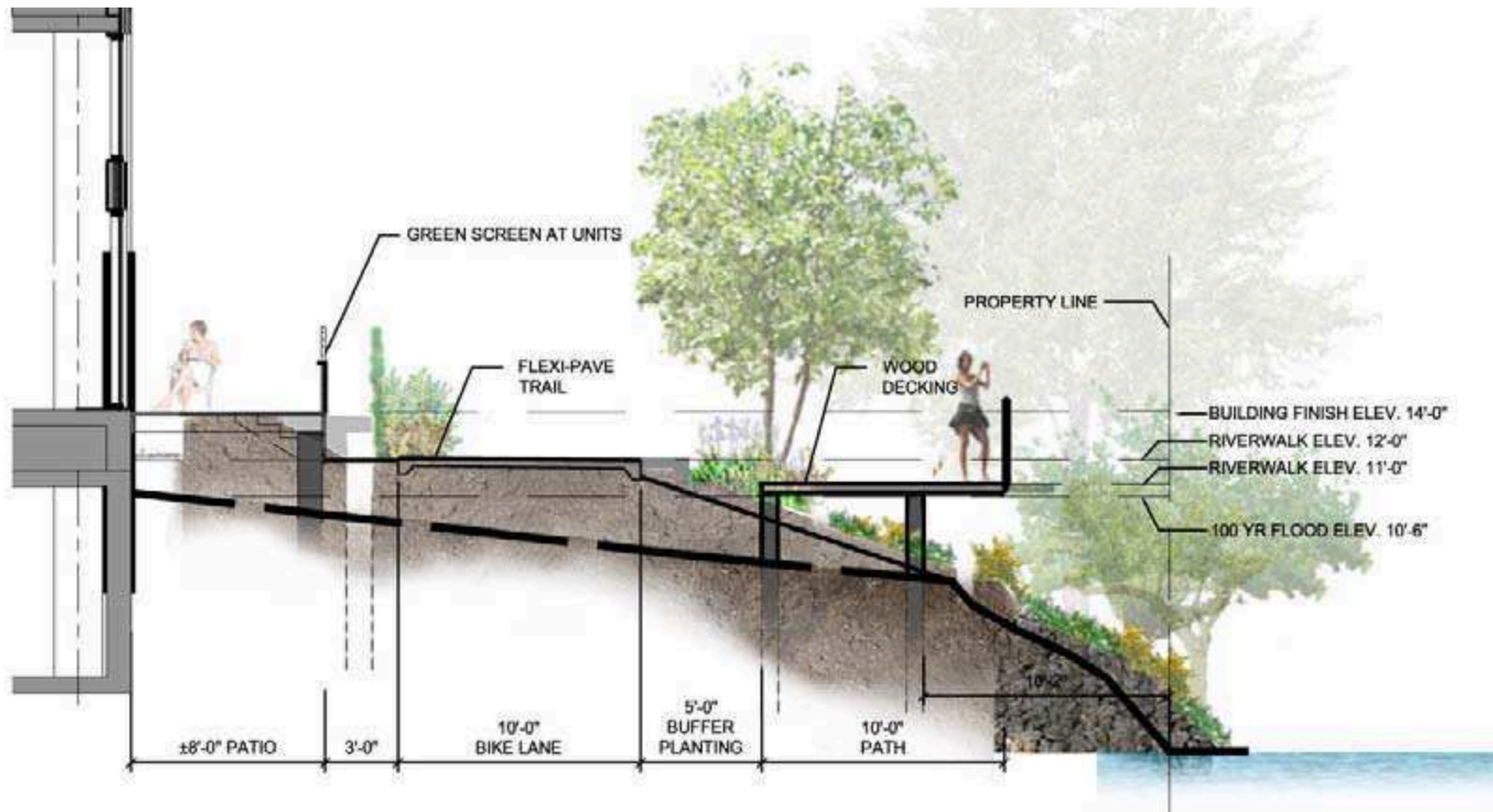
1900 HALF STREET

DC Zoning Commission Review

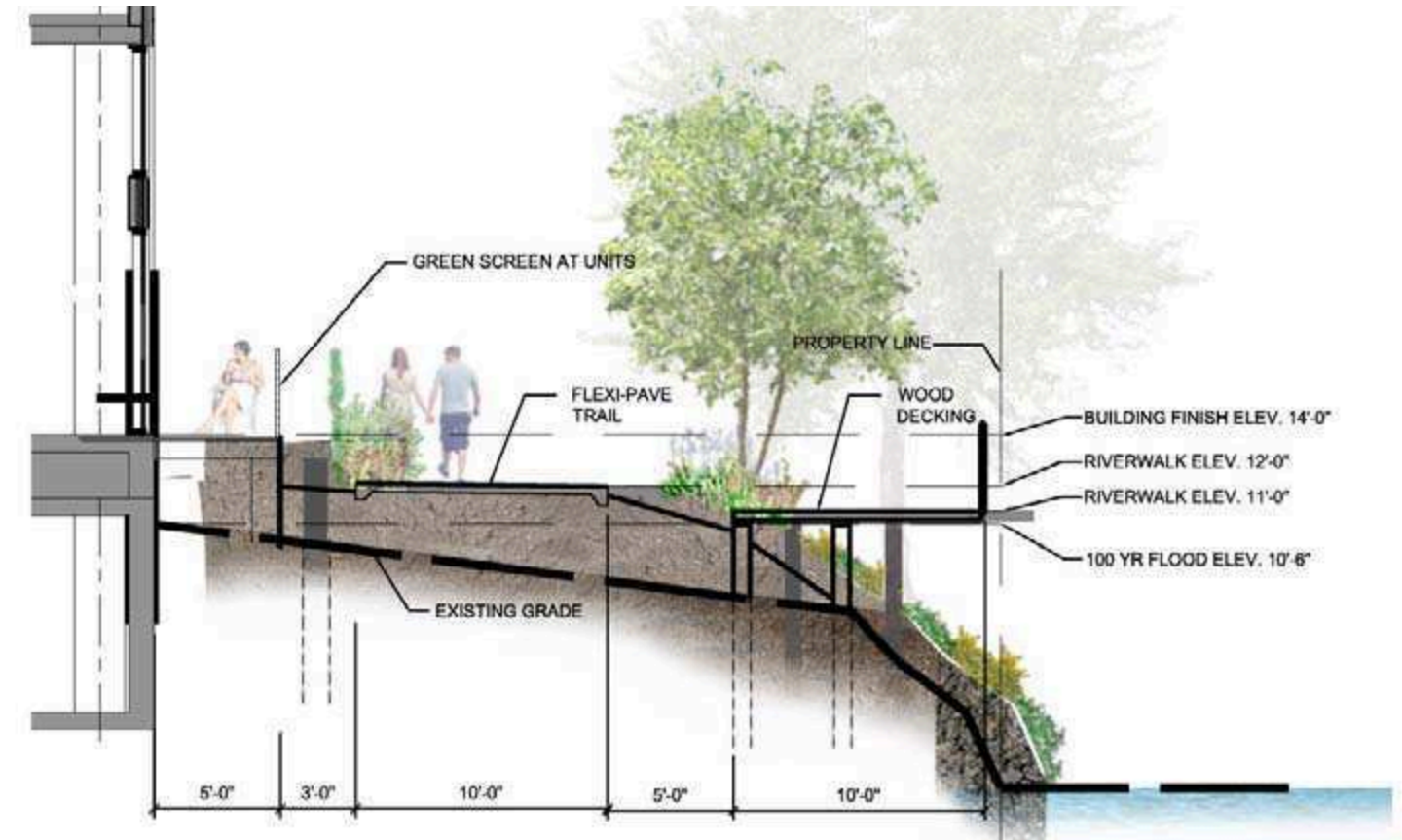
Square 666 Lot 15 / 1900 Half Street SW, Washington, DC · Douglas Development Corporation · Antunovich Associates © · Lee and Associates Inc.

site plan | diagram

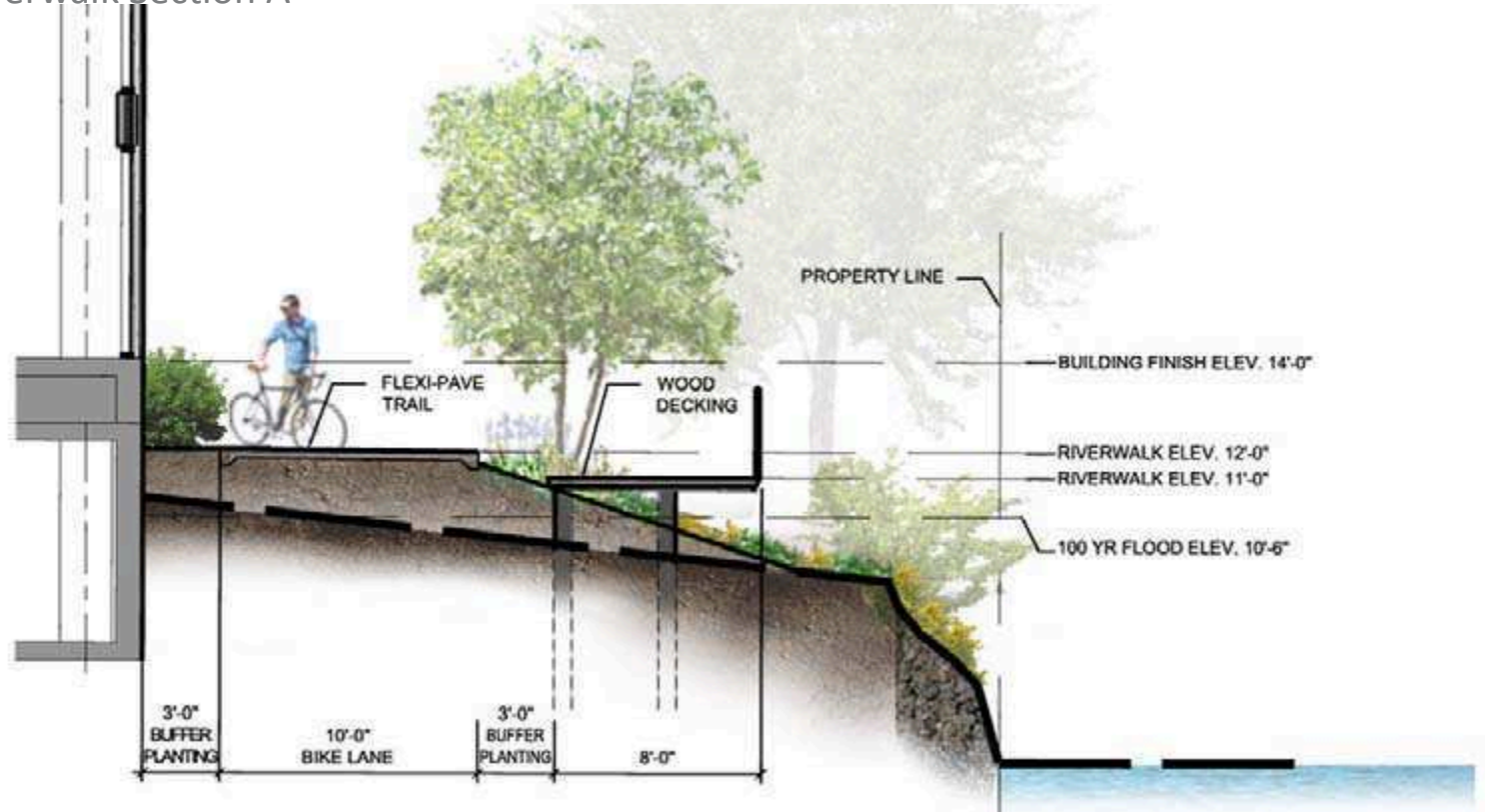
June 8, 2016



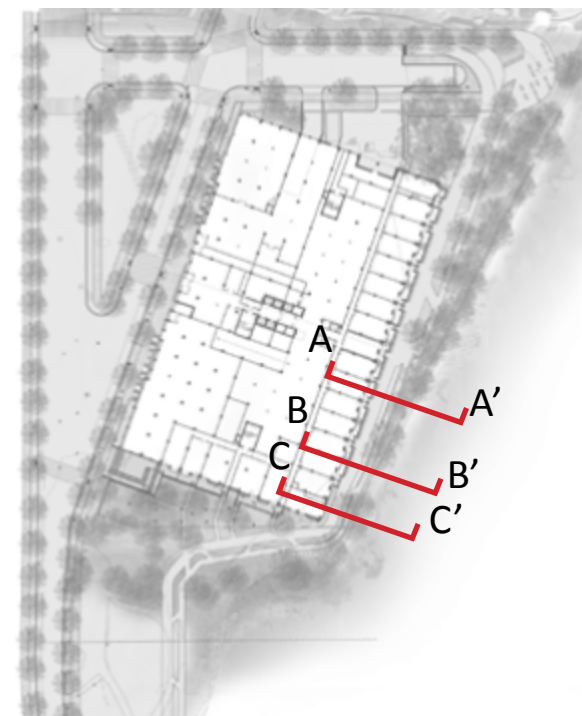
Riverwalk Section A



Riverwalk Section B



Riverwalk Section C



Key Plan

1900 HALF STREET

DC Zoning Commission Review

Square 666 Lot 15 / 1900 Half Street SW, Washington, DC · Douglas Development Corporation · Antunovich Associates © · Lee and Associates Inc.

sections and elevations | on-grade spaces

June 8, 2016