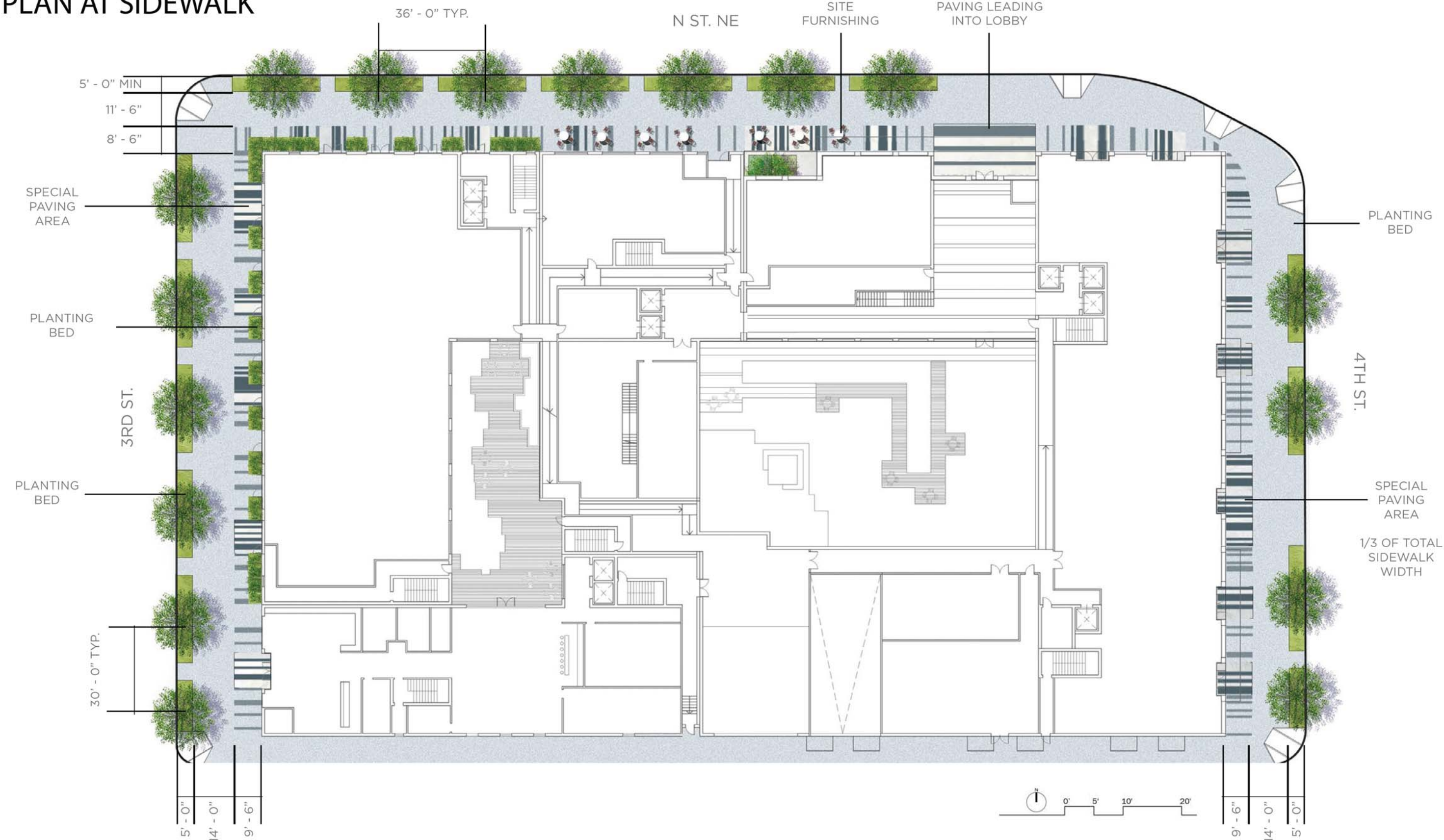
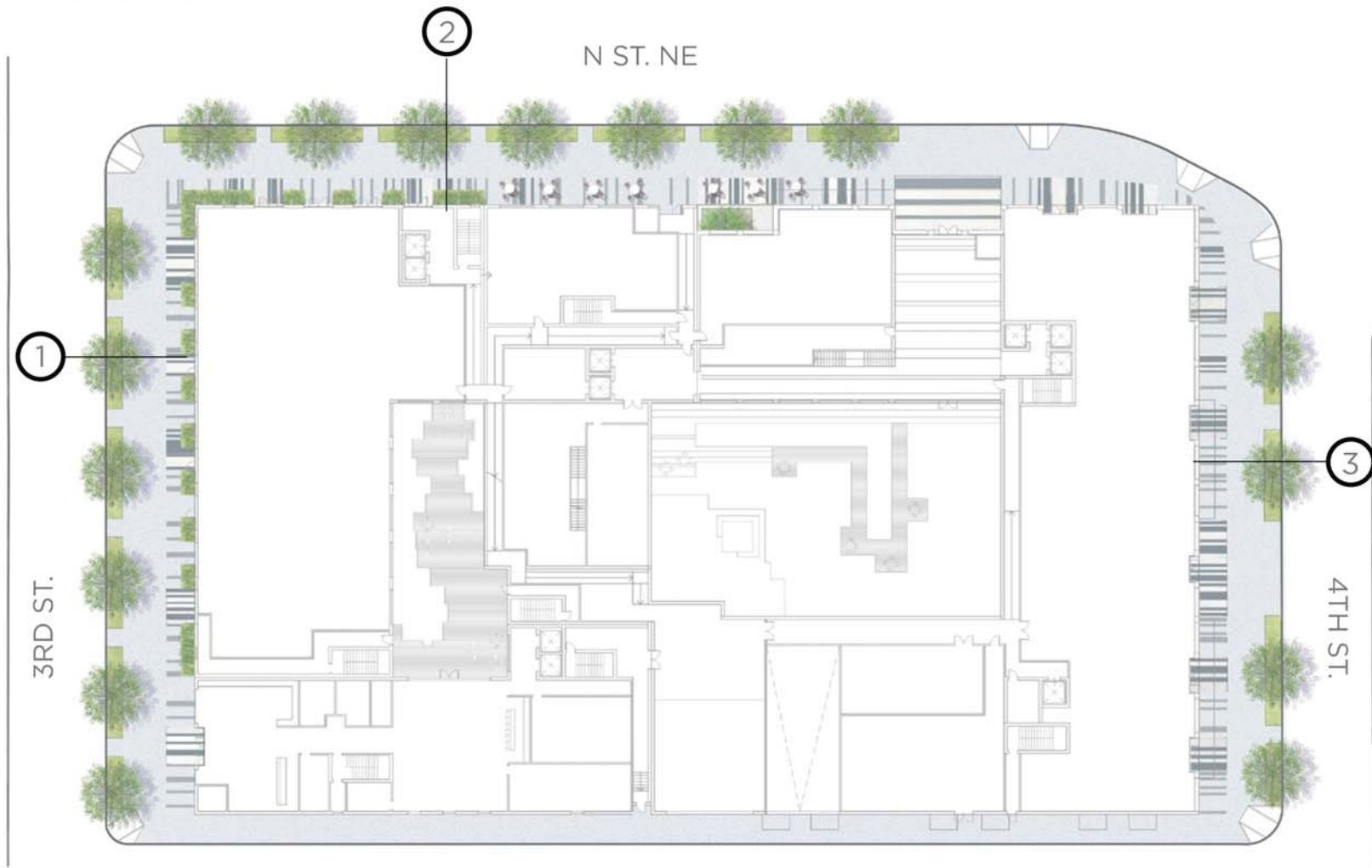


PLAN AT SIDEWALK

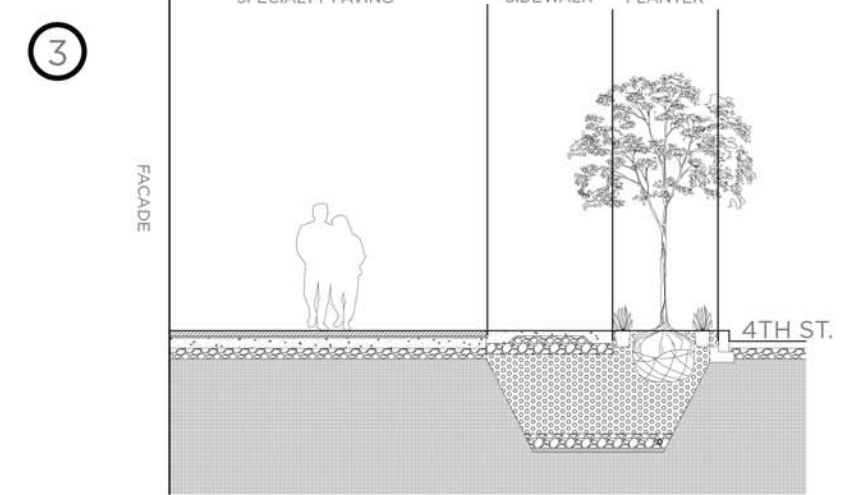
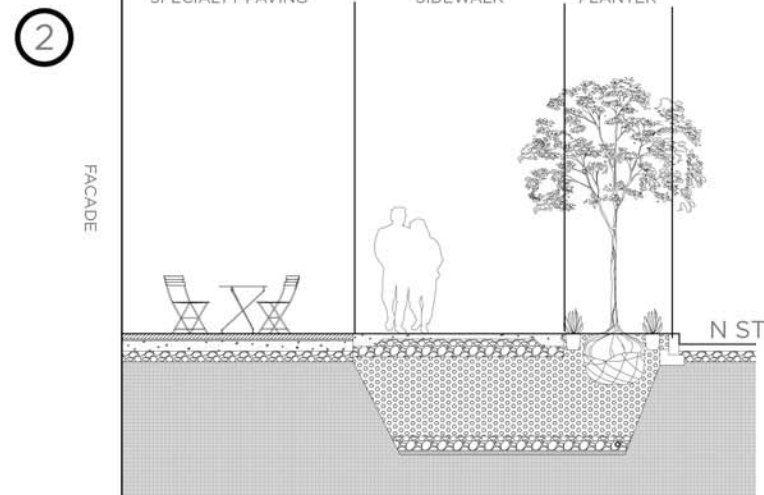
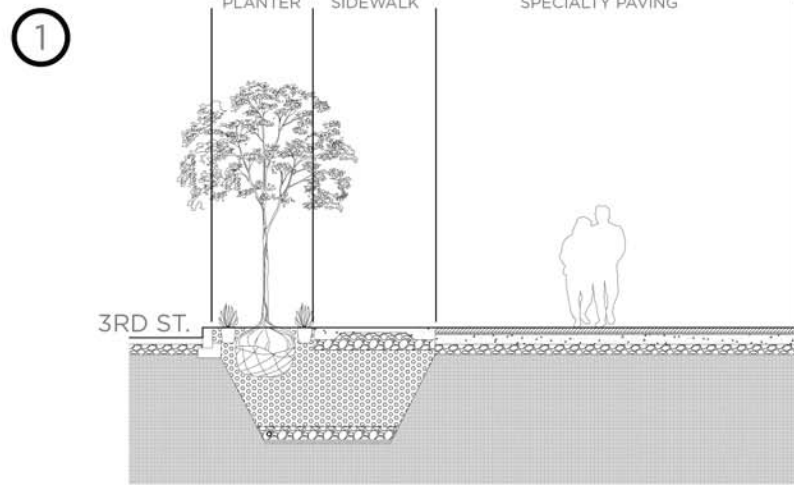


STREETSCAPE



NOMA STREETSCAPE GUIDELINES

3rd Street, NE							<i>Quercus coccinea</i> (Scarlet Oak), <i>Quercus bicolor</i> (Swamp White Oak), <i>Quercus phellos</i> (Willow Oak)	N/A	Washington Globe	Exposed Aggregate, 3x3 scoring sidewalk, 3x3 scoring across driveways	Granite	Brick
4th Street, NE	3'	6'	6'	10'	-	-	<i>Sophora japonica</i> (Japanese Pagoda Tree), <i>Koeleria paniculata</i> (Golden Rain Tree)	N/A	Washington Globe	Exposed Aggregate, 3x3 scoring sidewalk, 3x3 scoring across driveways	Granite	Brick
N Street	3'	5'	10' - Com 8' - Res.	8' - Res.	-	6'-com.	<i>Celtis laevigata</i> (Sugar Hackberry), <i>Carpinus caroliniana</i> (American Hornbeam)	N/A	Washington Globe	Exposed Aggregate, 3x3 scoring sidewalk, 3x3 scoring across driveways	Granite	Brick

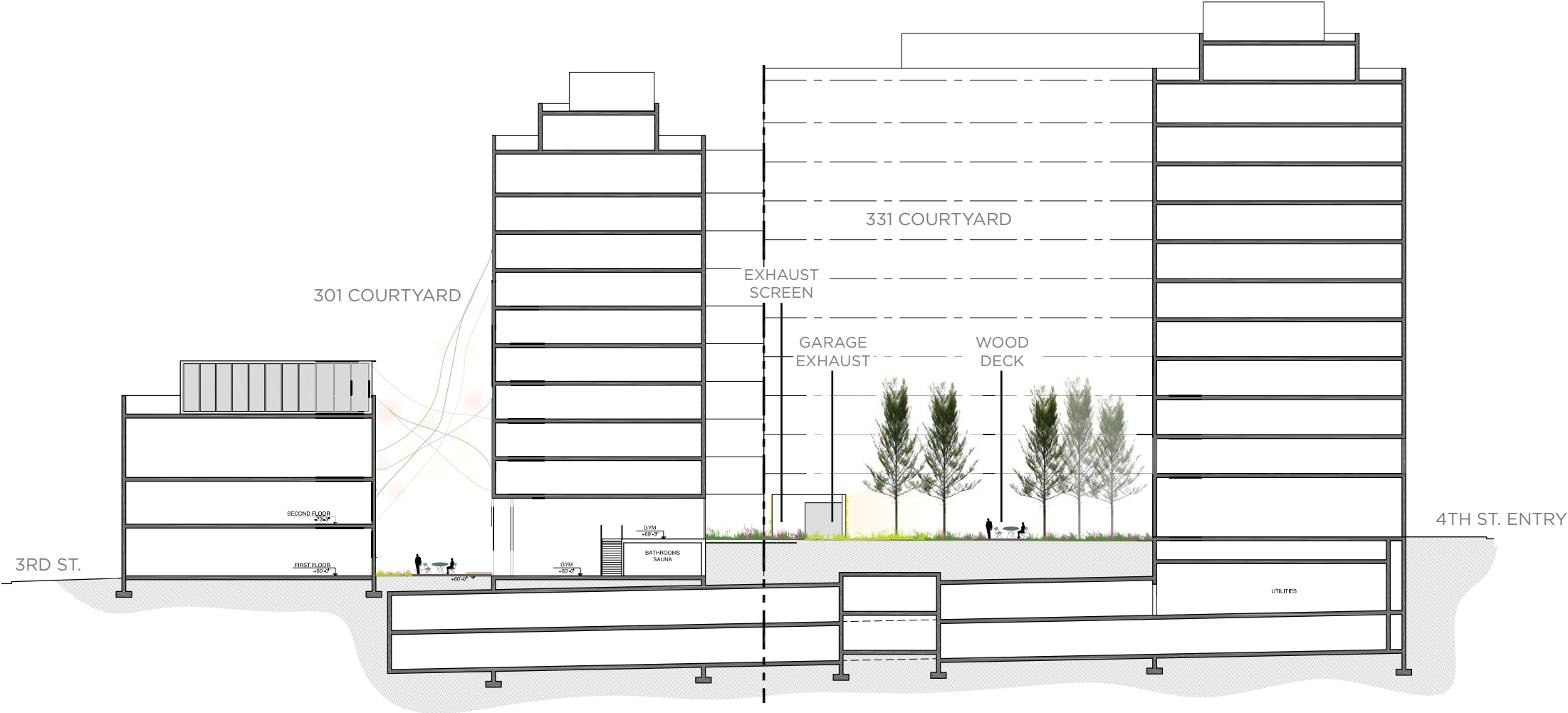


PLAN AT PLAZA LEVEL

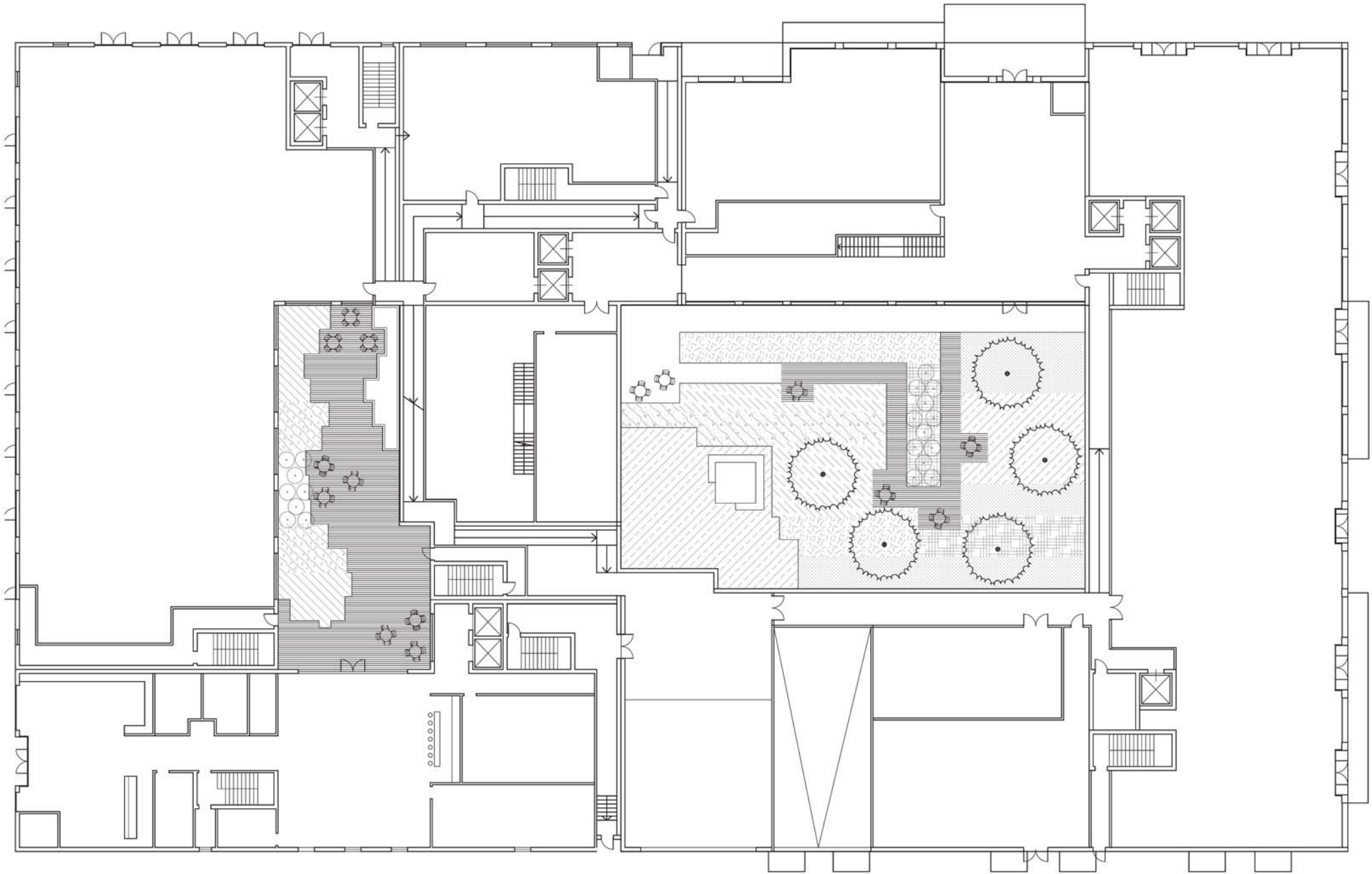
PLANTED AREA: 6,906 SF



SECTION A-A' THROUGH PLAZA



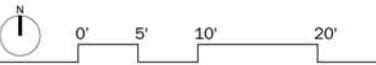
PLANTING PLAN AT PLAZA LEVEL



PLANT SCHEDULE

TREES	QTY	BOTANICAL NAME	COMMON NAME	SIZE	
	5	Taxodium ascendens	Pond Cypress	7'-8' Ht	
SHRUBS	QTY	BOTANICAL NAME	COMMON NAME	CONT	
	20	Cephalotaxus harringtonia prostrata	Prostrate Plum Yew	5 gal	
GROUND COVERS	CODE	QTY	BOTANICAL NAME	COMMON NAME	CONT
	AMS HUB	423 sf	Artemisia herbifera	Arkansas Blue-star	5qt
	AST YOB	1,241 sf	Astilbe X 'Yonique Carmen'	Yonique Carmen False Spirea	5qt
	ATH NIP	483 sf	Athyrium niponicum pictum	Japanese Painted Fern	5qt
	HEL SEM	466 sf	Helictotrichon sempervirens	Blue Oat Grass	5qt
	HYP BR2	318 sf	Hypericum calycinum 'Brigadoon'	Brigadoon Aaron's Beard	5qt
	NEP JUN	337 sf	Nepeta x faassenii 'Junior Walker'	Junior Walker Catmint	5qt
	STI MEX	1,035 sf	Stipa tenuissima	Finestem Needlegrass	5qt

PLANTING NOTE:
 All planting species and quantities are provided as reference only and may be modified with final engineering and design provided that the general quality and characteristics are in conformance with what is shown



PLANTING PALETTE - PLAZA + TERRACES

TREES



Taxodium distichum



PLANTING NOTE:
All planting species imagery is provided as reference only and may be modified with final engineering and design provided that the general quality and characteristics are in conformance with what is shown

SHRUBS + HERBACEOUS



Carex siderosticha



Acanthus mollis



Amsonia hubrichtii



Ajuga reptans



Astillbe spp.



Cyclamen hederifolium



Rodgersia pinnata



Athyrium niponicum



Cephalotaxus prostrata



Mertensia virginica



Hypericum calcynum



Sarcococca hookeri



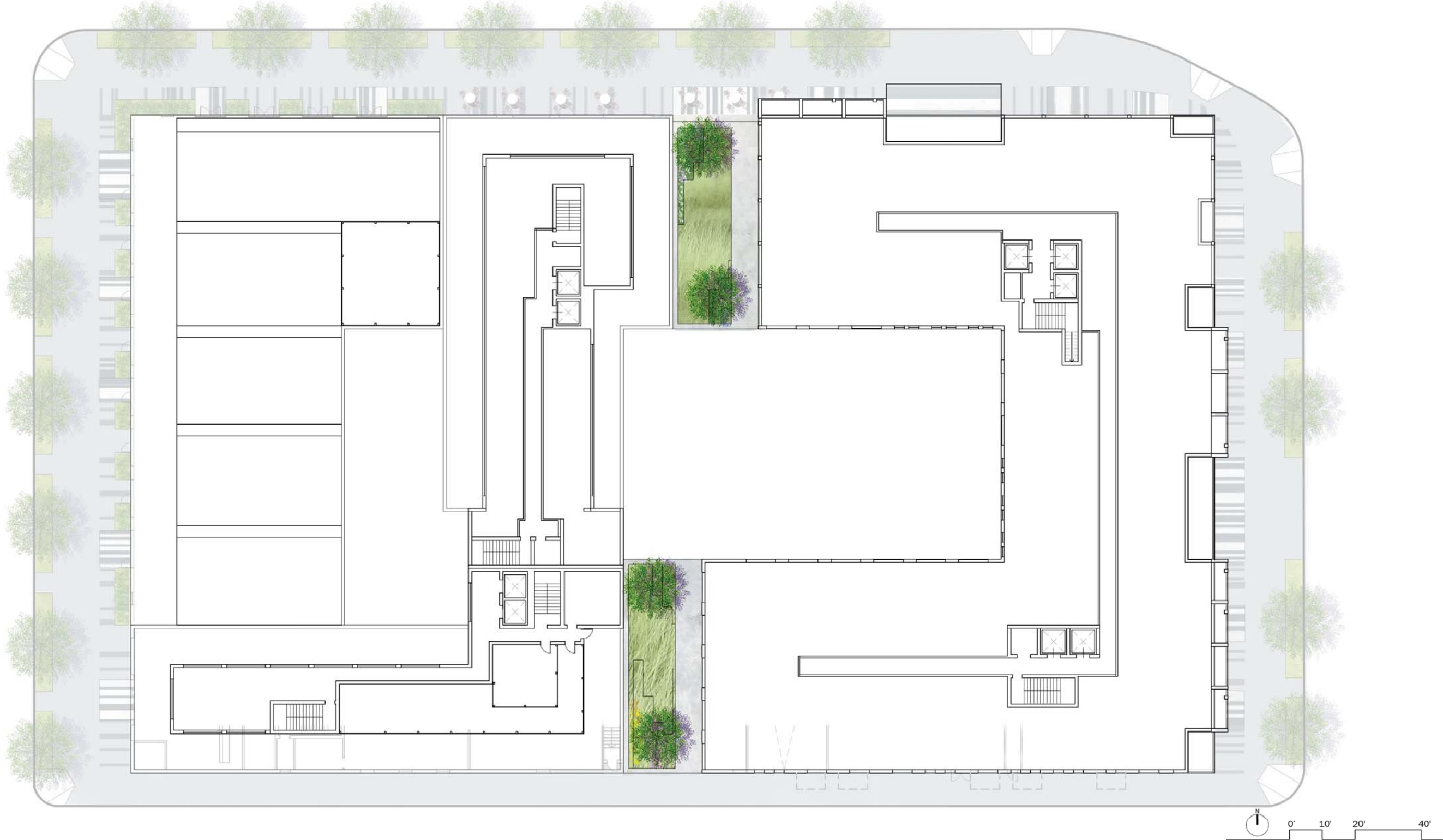
Stylophorum diphyllum



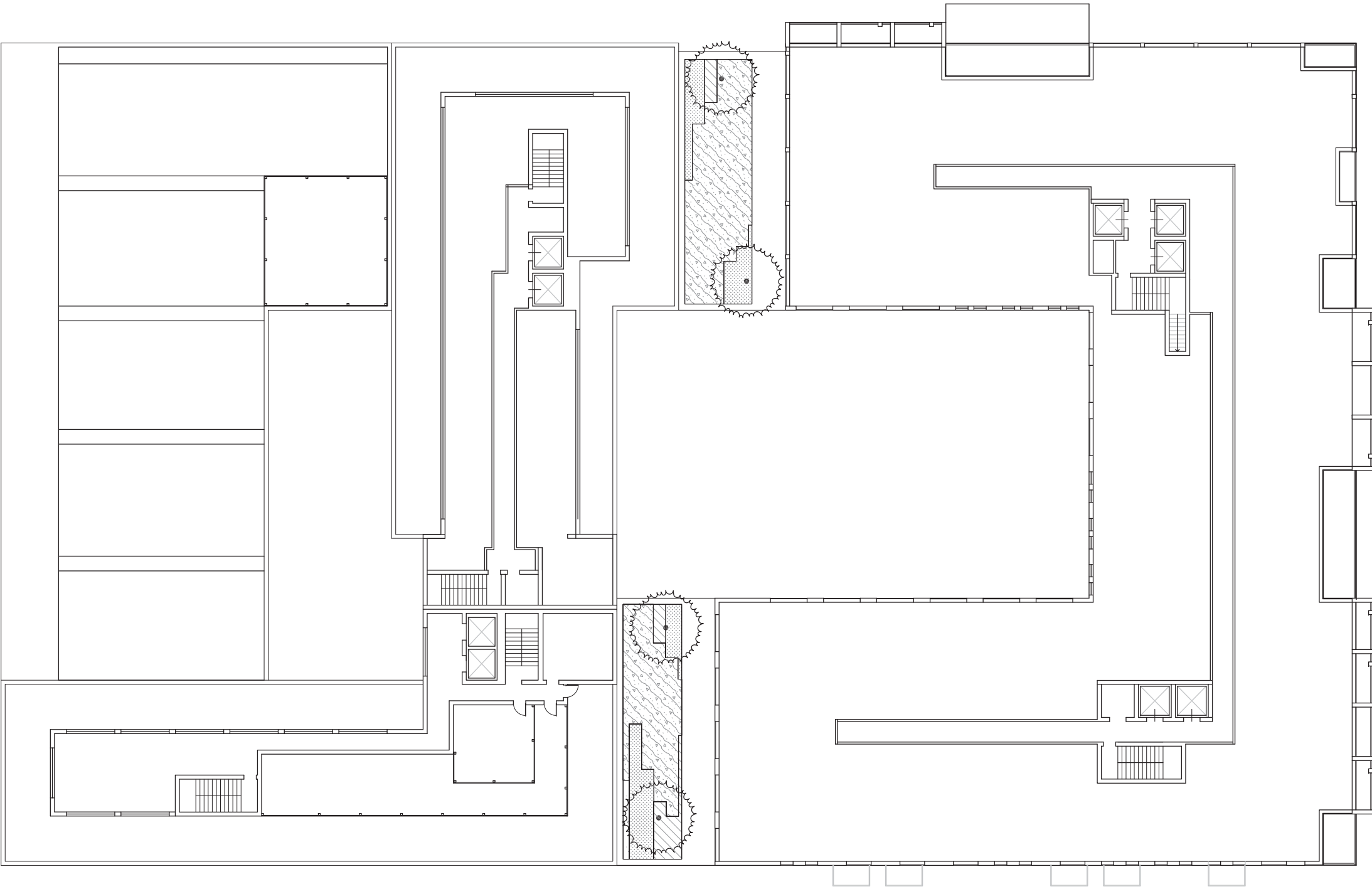
Polygonatum odoratum

PLAN AT TERRACE LEVEL

PLANTED AREA: 1,855 SF



PLANTING PLAN AT TERRACE LEVEL

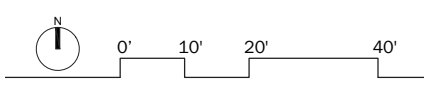


PLANT SCHEDULE

TREES	BOTANICAL NAME	COMMON NAME	SIZE	QTY
	<i>Taxodium ascendens</i>	Pond Cypress	7'-8' Ht	4

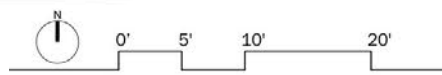
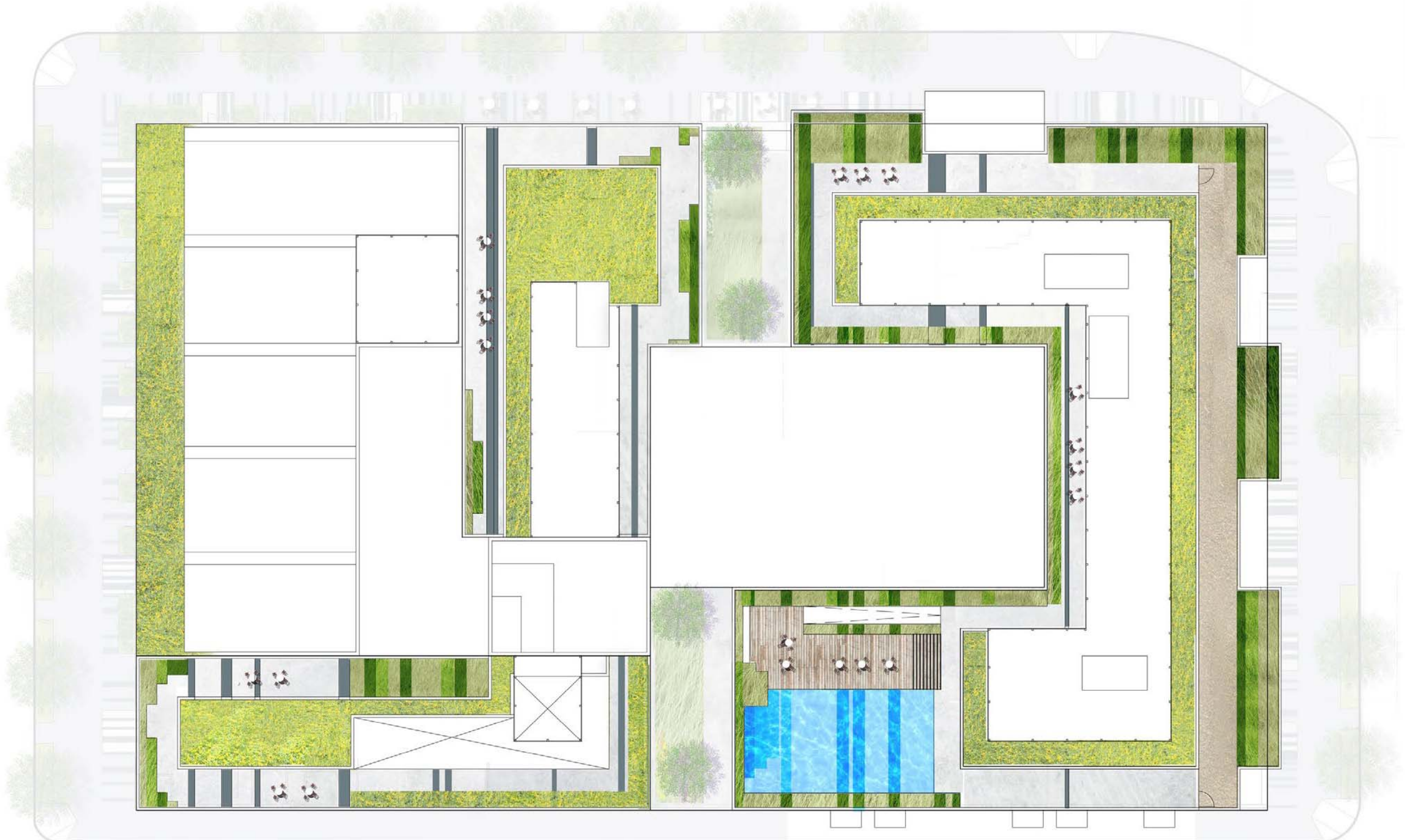
GROUND COVERS	BOTANICAL NAME	COMMON NAME	CONT	SPACING	QTY
	<i>Ajuga reptans 'Callin's Giant'</i>	Callin's Giant Bugleweed	flat		29 sf
	<i>Amsonia hubrichtii</i>	Arkansas Blue-star	flat		156 sf
	<i>Asilbe X 'Younique Carmen'</i>	Younique Carmen False Spiraea	flat		409 sf
	<i>Helleborichon sempervirens</i>	Blue Oat Grass	flat		1,261 sf

PLANTING NOTE:
 All planting species and quantities are provided as reference only and may be modified with final engineering and design provided that the general quality and characteristics are in conformance with what is shown

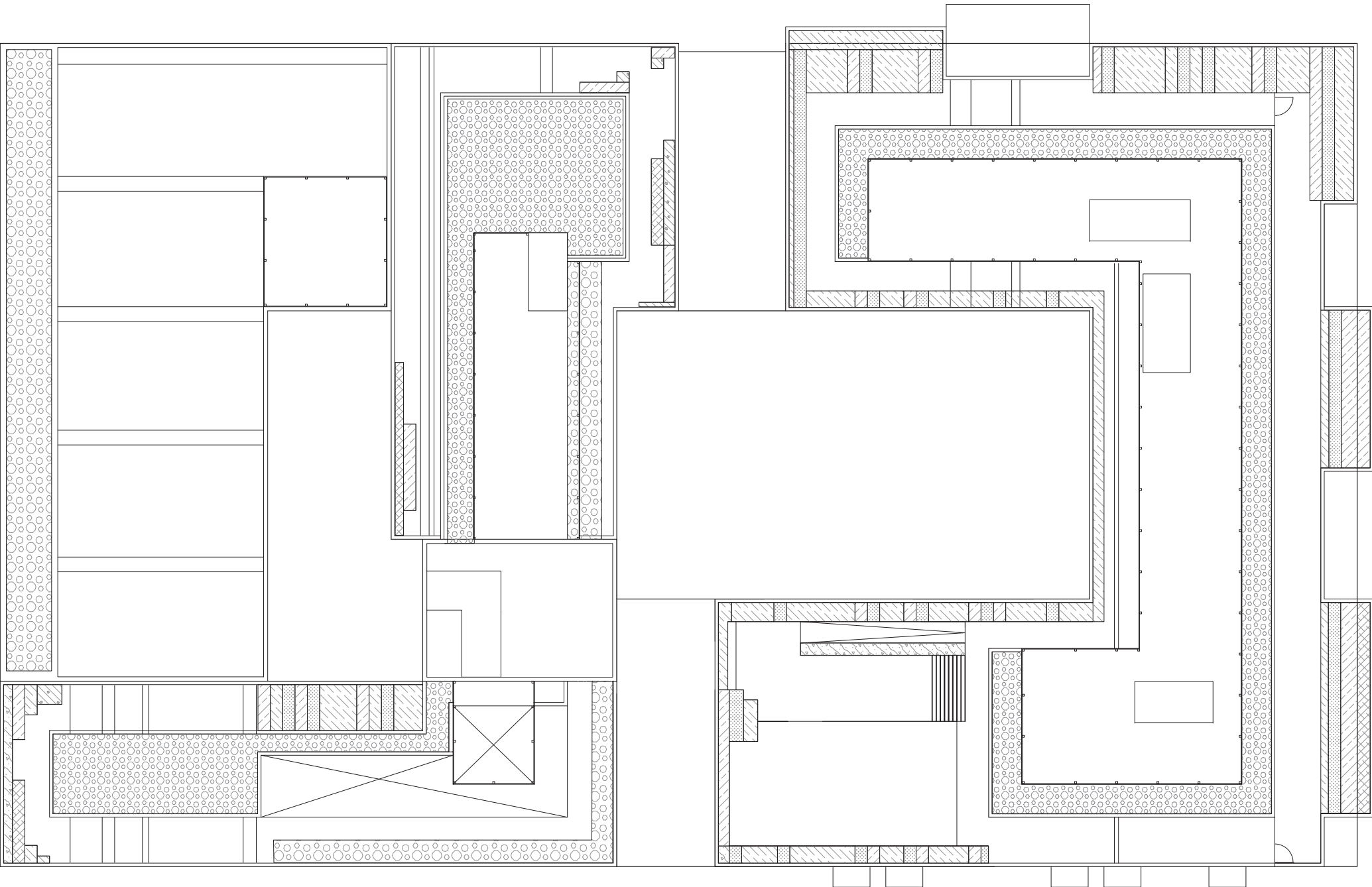


PLAN AT ROOF LEVEL

PLANTED AREA: 14,035 SF



PLANTING PLAN AT ROOF LEVEL



PLANT SCHEDULE

GROUND COVERS	CODE	BOTANICAL NAME	COMMON NAME	CONT.	SPACING	QTY
	AST Y08	AsiBe x 'Yourique Carmen'	Yourique Carmen False Spiraea	flat		1,085 sf
	GAU CRI	Gaura lindheimeri 'Crimson Butterflies'	Butterfly Gaura	flat		370 sf
	HEL SEM	Helictotrichon sempiternum	Blue Oat Grass	flat		225 sf
	NEP JU6	Hepeta x faassenii 'Junior Walker'	Junior Walker Catmint	flat		2,461 sf
	PIT DWA	Pittosporum tobira 'Dwarf'	Dwarf Pittosporum	flat		117 sf
	SED AN3	Sedum x 'Angelina'	Angelina Sedum	flat		8,789 sf
	STI MEX	Stipa tenuissima	Finestem Needlegrass	flat		1,209 sf

PLANTING NOTE:
 All planting species and quantities are provided as reference only and may be modified with final engineering and design provided that the general quality and characteristics are in conformance with what is shown

