

SUPPLEMENTAL MATERIAL FOR MARKET TERMINAL
APPLICATION FOR CONSOLIDATED AND FIRST STAGE PUD

RENDERINGS



KEY PLAN _POINT OF VIEW RENDERED IMAGES

OCTOBER 18, 2016



1. VIEW LOOKING TOWARDS BUILDING A-1 (HIGHRISE) FROM FLORIDA PARK

OCTOBER 18, 2016



2. VIEW LOOKING TOWARDS GANTRY AND BUILDING A-1 (HIGHRISE) FROM FLORIDA PARK

OCTOBER 18, 2016



3. VIEW LOOKING EAST FROM UPPER FLORIDA PARK

OCTOBER 18, 2016



4. VIEW LOOKING EAST FROM UPPER FLORIDA PARK TOWARDS MORSE STREET

OCTOBER 18, 2016



5. VIEW LOOKING WEST ON MORSE STREET

OCTOBER 18, 2016



5.1 VIEW LOOKING WEST ON MORSE STREET

OCTOBER 18, 2016



6. VIEW LOOKING SOUTH ON 3RD STREET

OCTOBER 18, 2016



VIEW LOOKING WEST AT BUILDING ENTRANCE/ BIKE VALET AND TERRACE OF BUILDING A-1

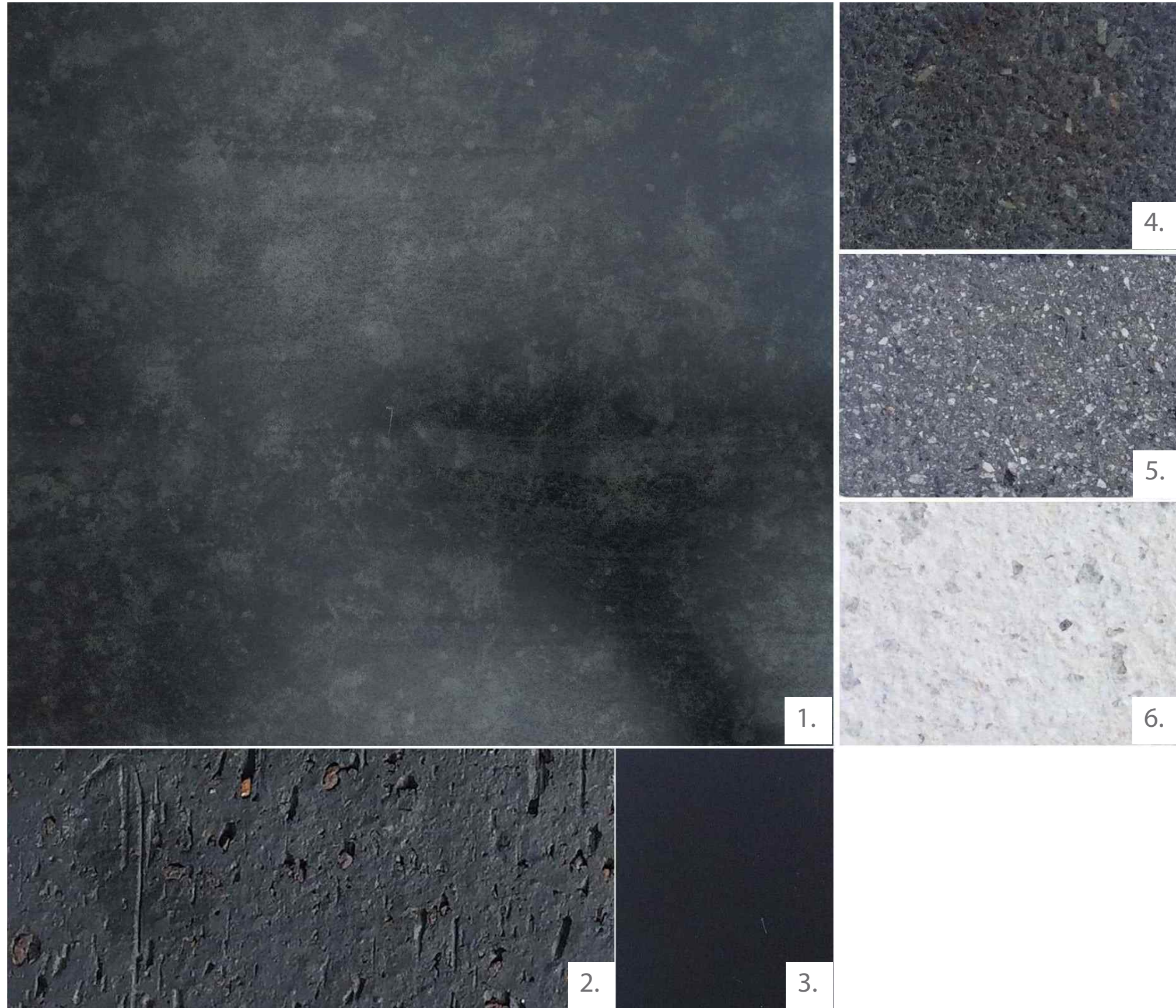


VIEW FROM LOOKING SOUTH-EAST OVER TRAIN TRACKS

OCTOBER 18, 2016

MATERIAL PALETTES

OCTOBER 18, 2016



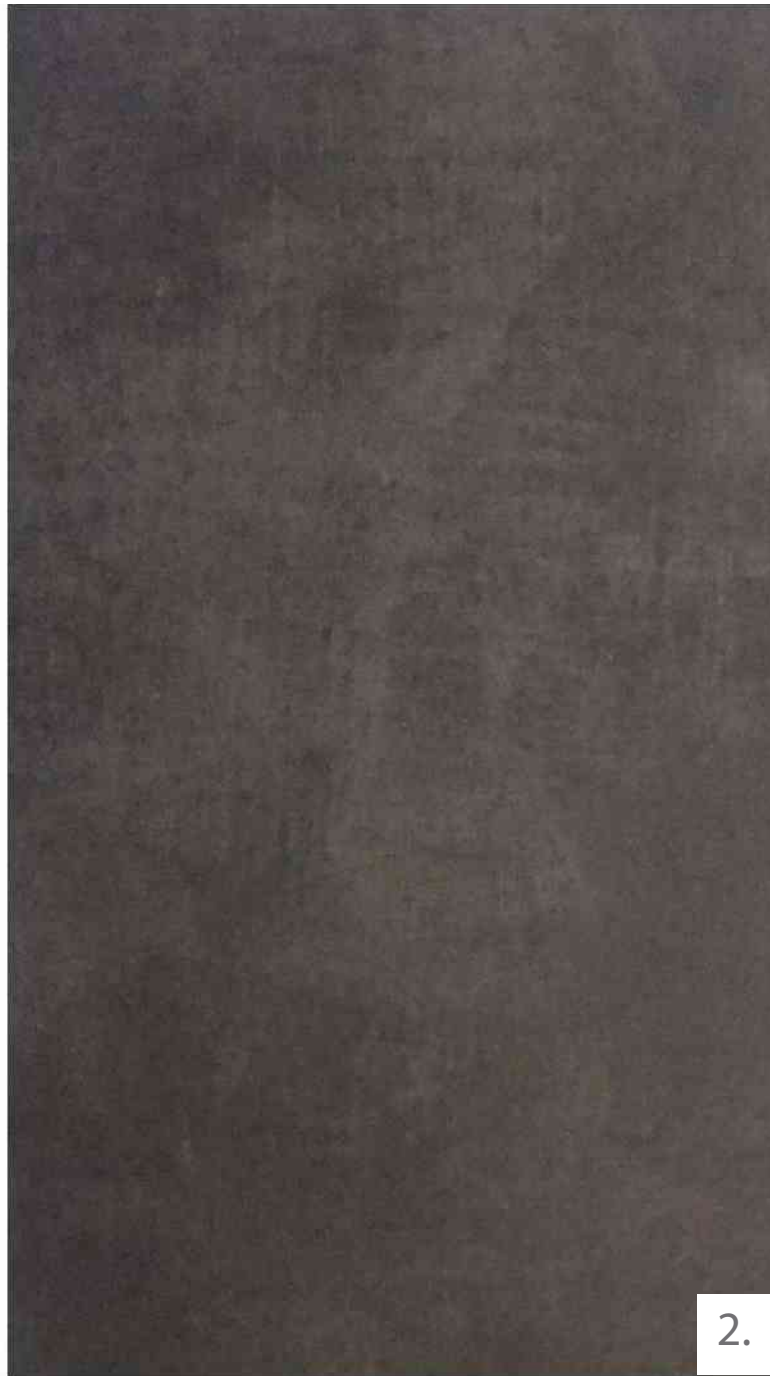
MATERIAL LEGEND

1. METAL PANEL, TYPE A
2. MASONRY - FIELD BRICK AT PODIUM LEVEL
3. MULLION, TYPICAL
4. CONCRETE BLOCK - GROUND FACE
5. POLISHED TEXTURED - FIELD BLOCK AT PODIUM LEVEL WEST FACADE, TRACK SIDE
6. CONCRETE BLOCK - ACCENT FOR PERFORATED WALL DESIGN AT WEST FACADE, TRACK SIDE

NOTE: THE APPLICANT REQUESTS FLEXIBILITY TO VARY THE FINAL SELECTION OF EXTERIOR MATERIALS, BUT WILL MAINTAIN THE DESIGN INTENT AND GENERAL LEVEL OF QUALITY. COLOR AND RANGE OF MATERIALS MAY VARY BASED ON AVAILABILITY AT TIME OF CONSTRUCTION AND DESIGN DEVELOPMENT.



1.



2.



3.

MATERIAL LEGEND

- 1. MASONRY - FIELD BRICK
- 2. METAL PANEL, TYPE B
- 3. METAL PANEL, TYPE C

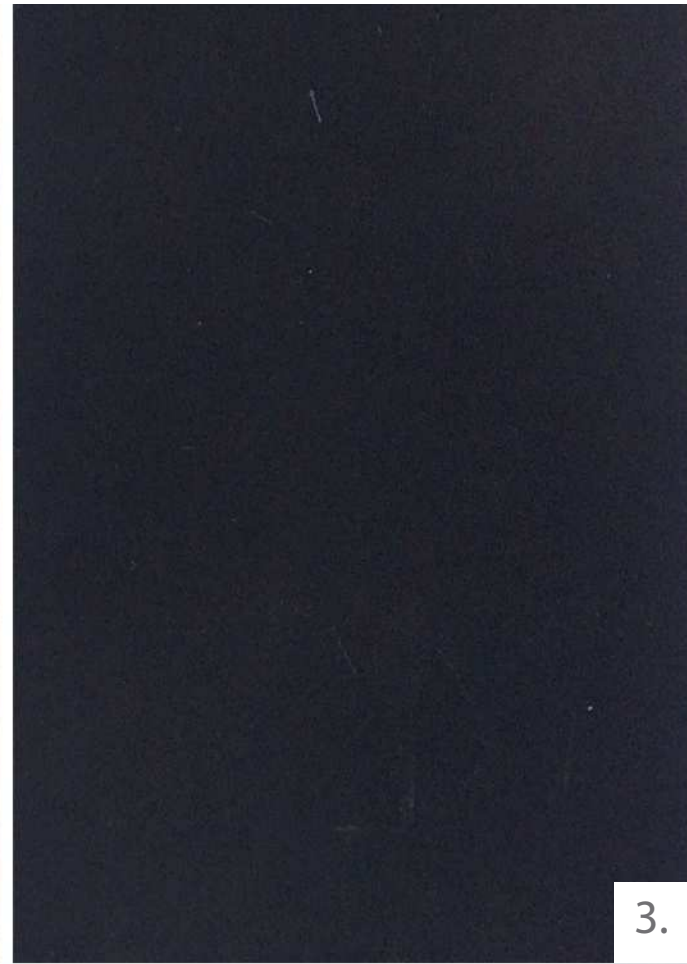
NOTE: THE APPLICANT REQUESTS FLEXIBILITY TO VARY THE FINAL SELECTION OF EXTERIOR MATERIALS, BUT WILL MAINTAIN THE DESIGN INTENT AND GENERAL LEVEL OF QUALITY. COLOR AND RANGE OF MATERIALS MAY VARY BASED ON AVAILABILITY AT TIME OF CONSTRUCTION AND DESIGN DEVELOPMENT.



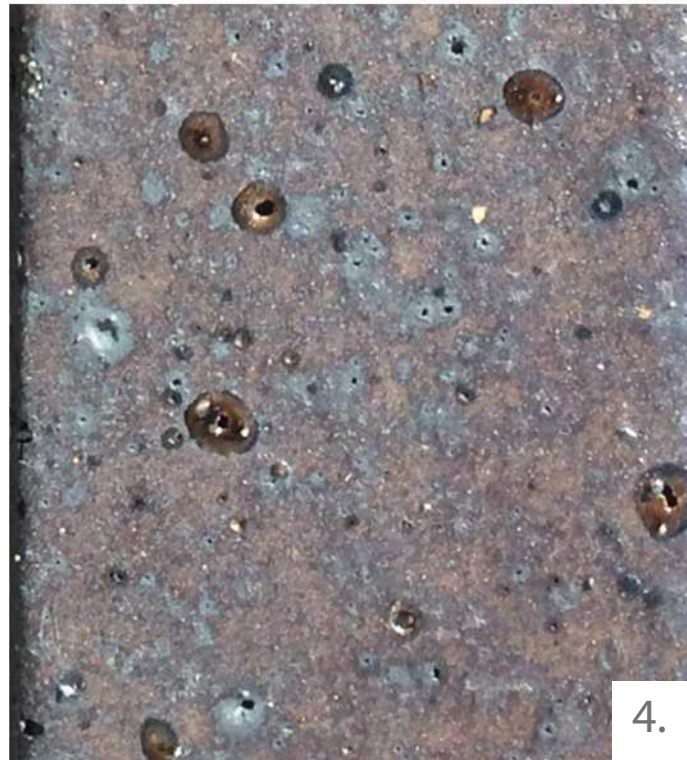
1.



2.



3.



4.



5.

MATERIAL LEGEND

- 1. METAL PANEL, TYPE B
- 2. METAL PANEL, TYPE C
- 3. METAL PANEL, TRIM
- 4. MASONRY AT PODIUM LEVEL
- 5. METAL PANEL, TYPE A

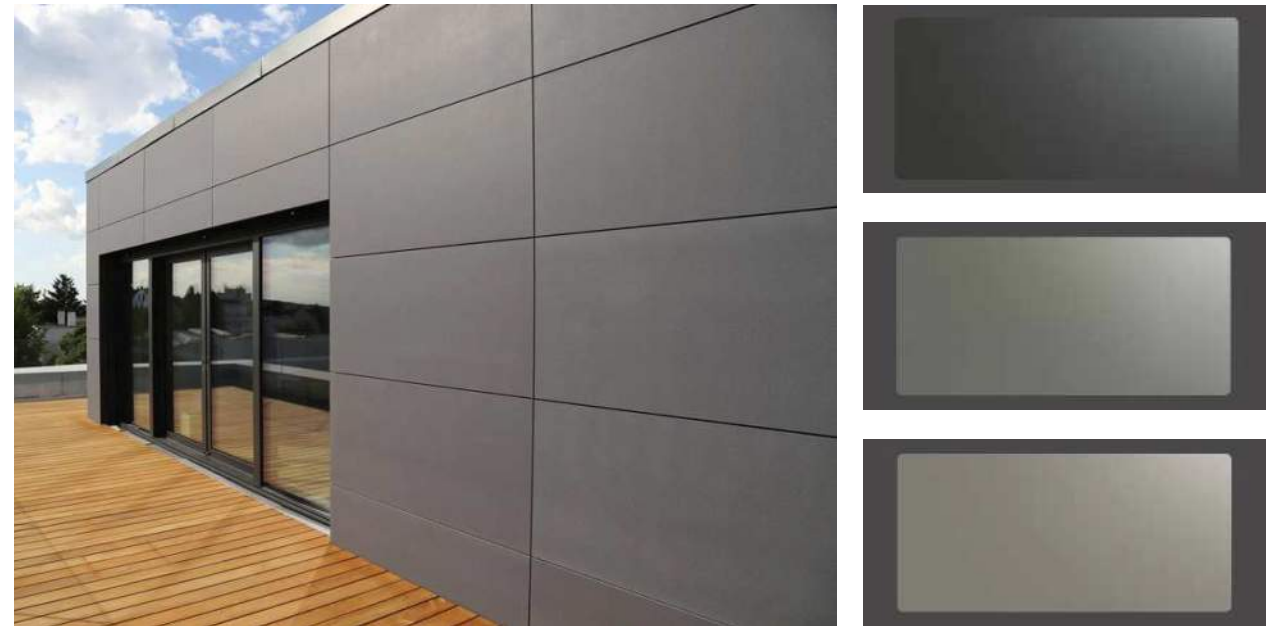
NOTE: THE APPLICANT REQUESTS FLEXIBILITY TO VARY THE FINAL SELECTION OF EXTERIOR MATERIALS, BUT WILL MAINTAIN THE DESIGN INTENT AND GENERAL LEVEL OF QUALITY. COLOR AND RANGE OF MATERIALS MAY VARY BASED ON AVAILABILITY AT TIME OF CONSTRUCTION AND DESIGN DEVELOPMENT.



MATERIAL A

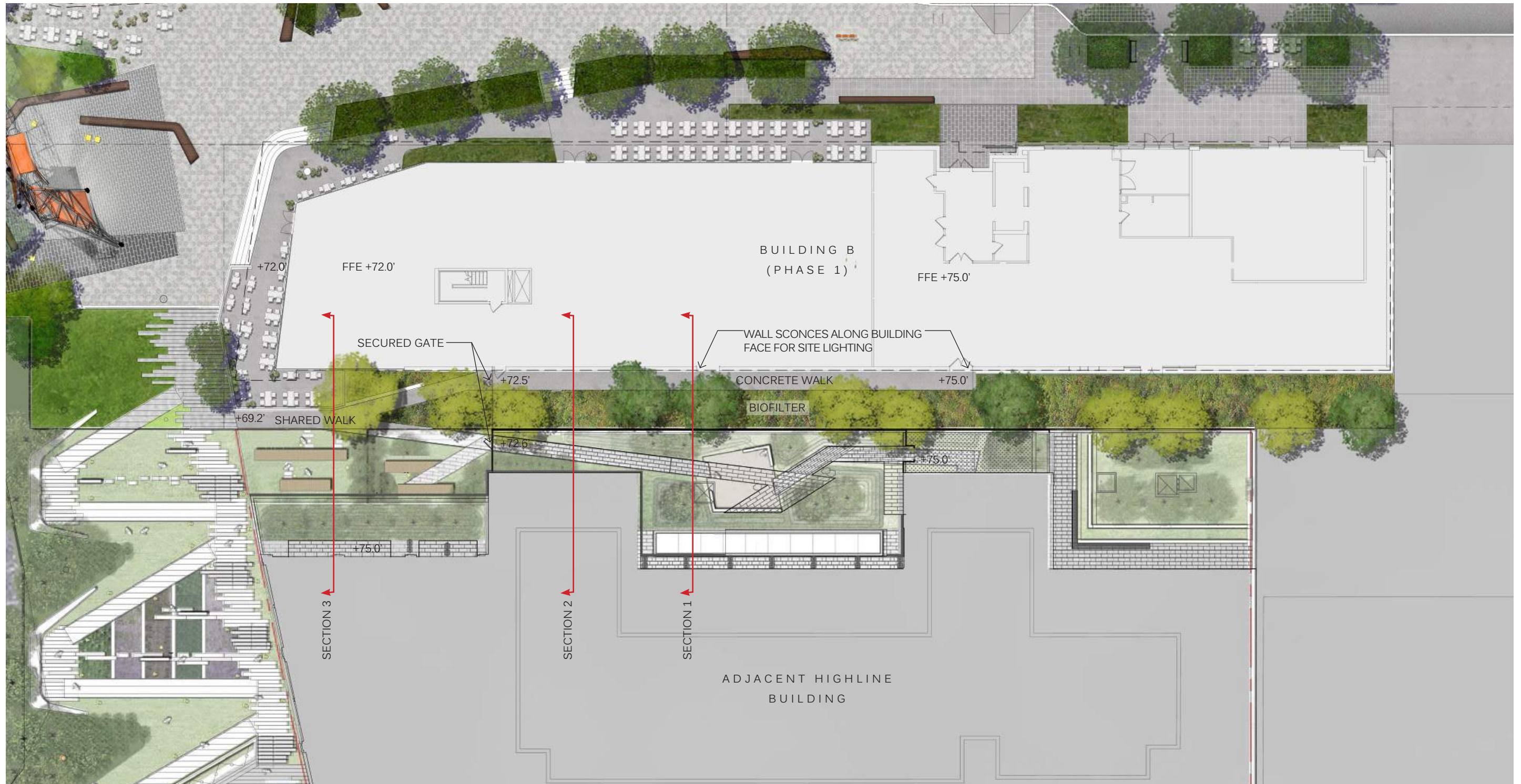


MATERIAL B



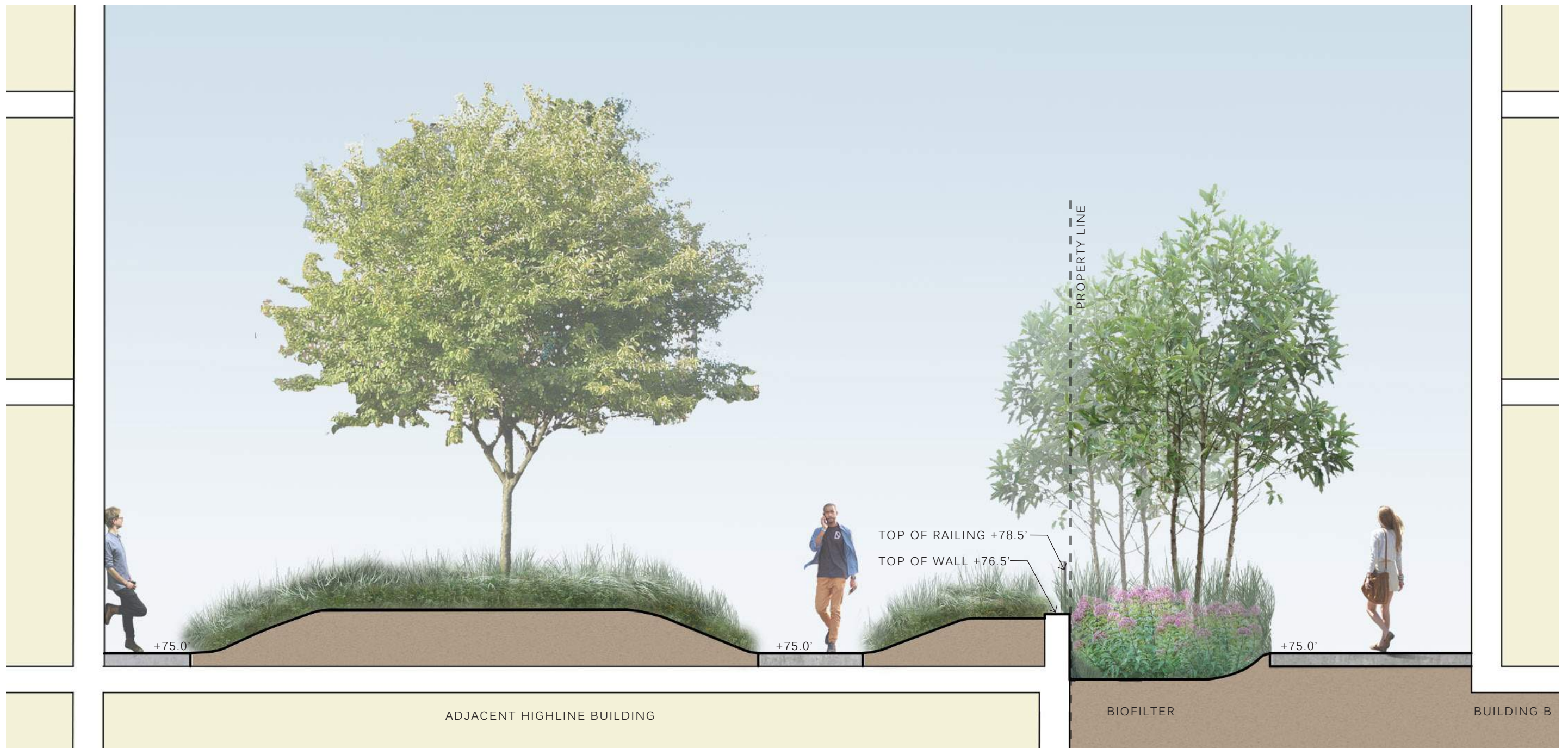
OCTOBER 18, 2016

LANDSCAPE



BUILDING B ENLARGED PLAN





BUILDING B SECTION 1



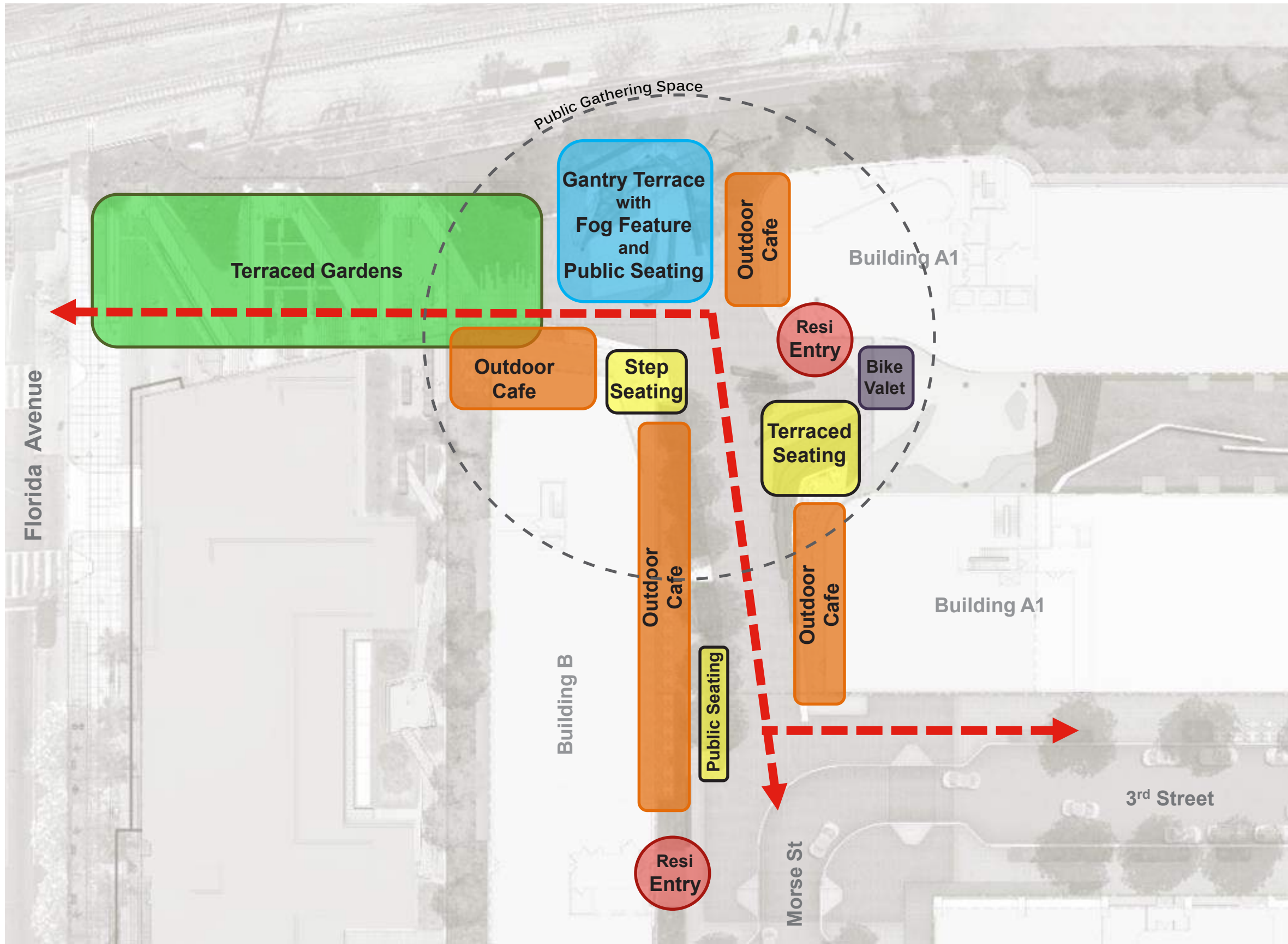
BUILDING B SECTION 2



BUILDING B SECTION 3



Morse Street Plaza



**Morse Street Plaza
Spatial Diagram**



Site Elements

1. Stone Pavers
2. Unit Pavers (Brick Pavers, Concrete Pavers, or Asphalt Pavers)
3. Concrete Pavement
4. Park Pavers (Match Level 2 Park Pavers)
5. Terraced Seating
6. Communal Seating
7. Seating Steps
8. Bench Seating
9. Café Seating
10. Gantry Structure with Fog Feature

