

**NOTE:**  
 REFER TO OVERALL ROOF PLAN FOR OVERALL BUILDING DIMENSIONS.  
 THE EXTERIOR ELEVATIONS ARE PRELIMINARY AND SHOWN FOR ILLUSTRATIVE PURPOSE ONLY  
 ALL RETAIL STOREFRONT AND SIGNAGE SUBJECT TO TENANT MODIFICATION  
 THE APPLICANT REQUESTS FLEXIBILITY TO VARY THE FINAL SELECTION OF EXTERIOR MATERIALS, BUT WILL MAINTAIN THE DESIGN INTENT AND GENERAL LEVEL OF QUALITY. COLOR RANGE AND TYPE OF MATERIALS MAY VARY BASED ON AVAILABILITY AT TIME OF CONSTRUCTION AND DESIGN DEVELOPMENT.



KEY PLAN



SOUTH ELEVATION – 2



WEST ELEVATION – 1



**NOTE:**  
 REFER TO OVERALL ROOF PLAN FOR OVERALL BUILDING DIMENSIONS.  
 THE EXTERIOR ELEVATIONS ARE PRELIMINARY AND SHOWN FOR ILLUSTRATIVE PURPOSE ONLY  
 ALL RETAIL STOREFRONT AND SIGNAGE SUBJECT TO TENANT MODIFICATION  
 THE APPLICANT REQUESTS FLEXIBILITY TO VARY THE FINAL SELECTION OF EXTERIOR MATERIALS, BUT WILL MAINTAIN THE DESIGN INTENT AND GENERAL LEVEL OF QUALITY. COLOR RANGE AND TYPE OF MATERIALS MAY VARY BASED ON AVAILABILITY AT TIME OF CONSTRUCTION AND DESIGN DEVELOPMENT.



KEY PLAN



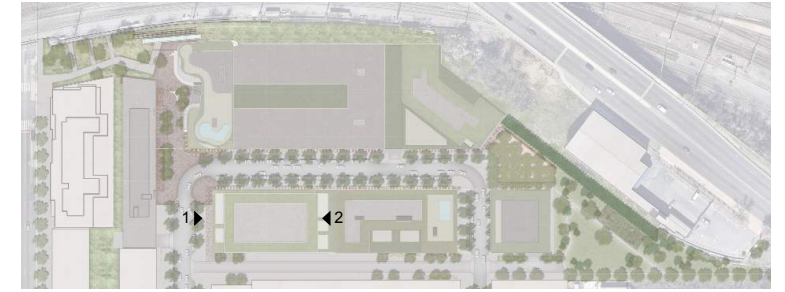
JANUARY 15, 2016

SCALE: 1" = 30'-0"

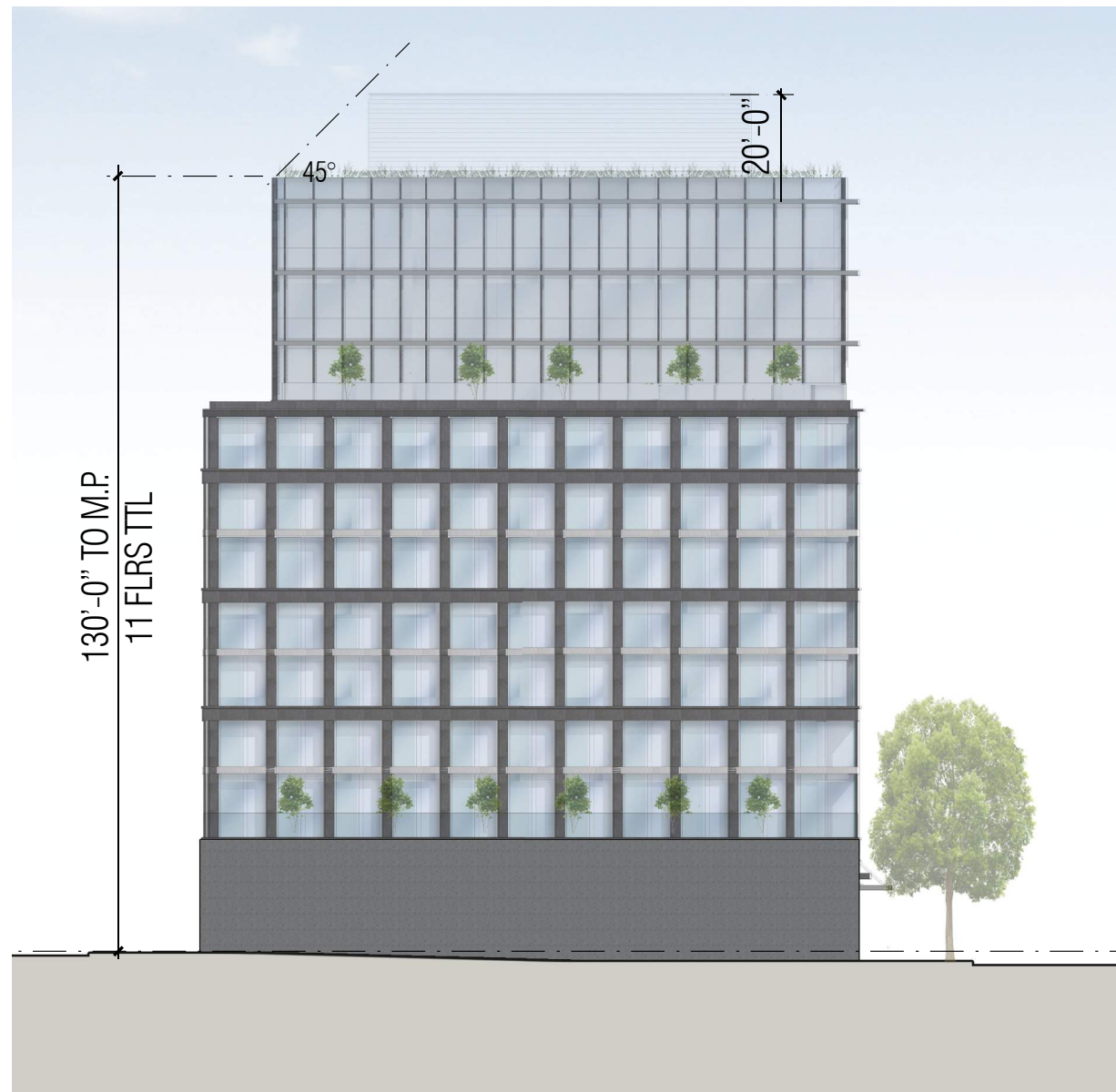
ELEVATIONS - BUILDING B



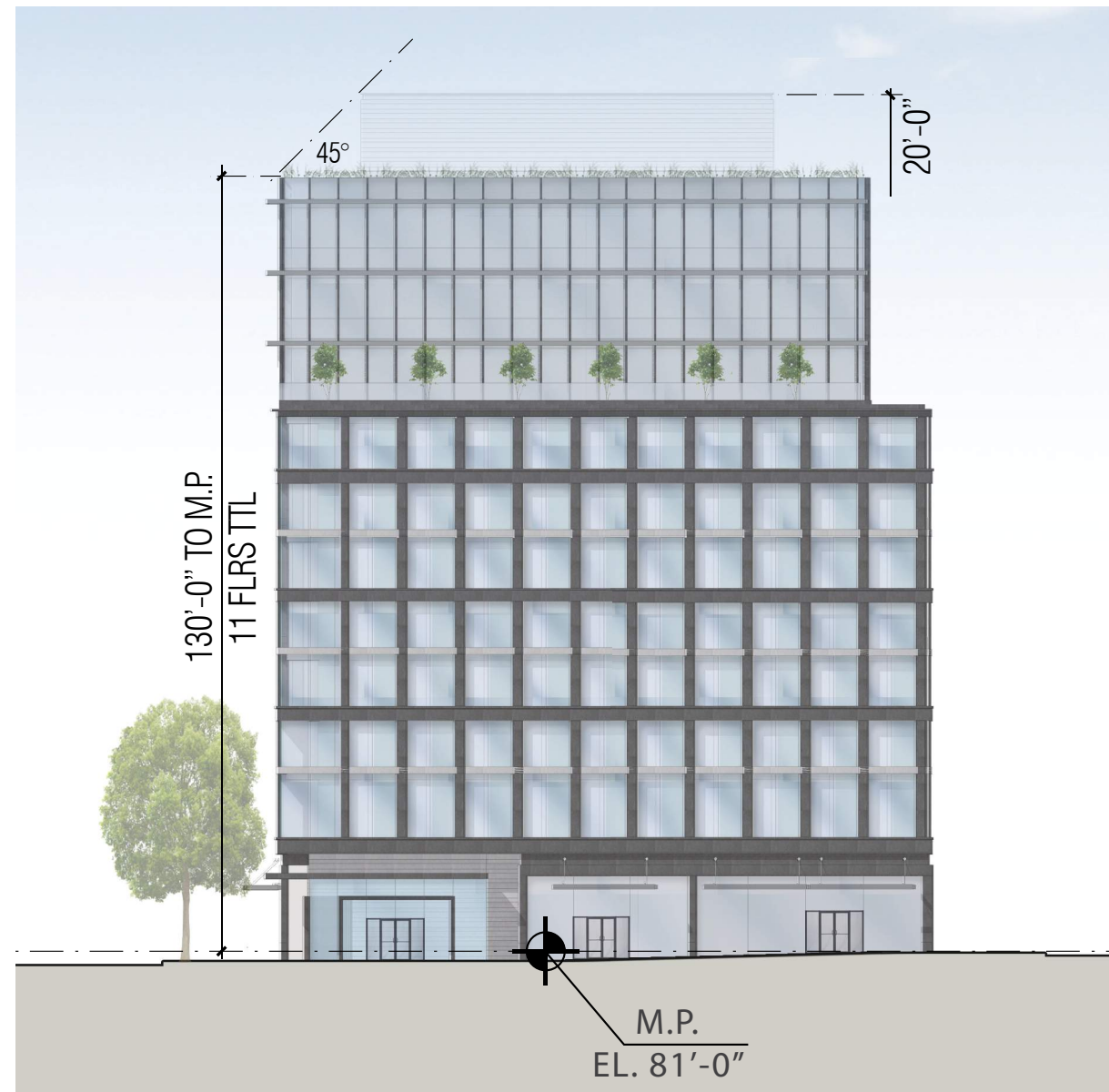
**NOTE:**  
 REFER TO OVERALL ROOF PLAN FOR OVERALL BUILDING DIMENSIONS.  
 THE EXTERIOR ELEVATIONS ARE PRELIMINARY AND SHOWN FOR ILLUSTRATIVE PURPOSE ONLY  
 ALL RETAIL STOREFRONT AND SIGNAGE SUBJECT TO TENANT MODIFICATION  
 THE APPLICANT REQUESTS FLEXIBILITY TO VARY THE FINAL SELECTION OF EXTERIOR MATERIALS, BUT WILL MAINTAIN THE DESIGN INTENT AND GENERAL LEVEL OF QUALITY. COLOR RANGE AND TYPE OF MATERIALS MAY VARY BASED ON AVAILABILITY AT TIME OF CONSTRUCTION AND DESIGN DEVELOPMENT.



KEY PLAN



NORTH ELEVATION - 2



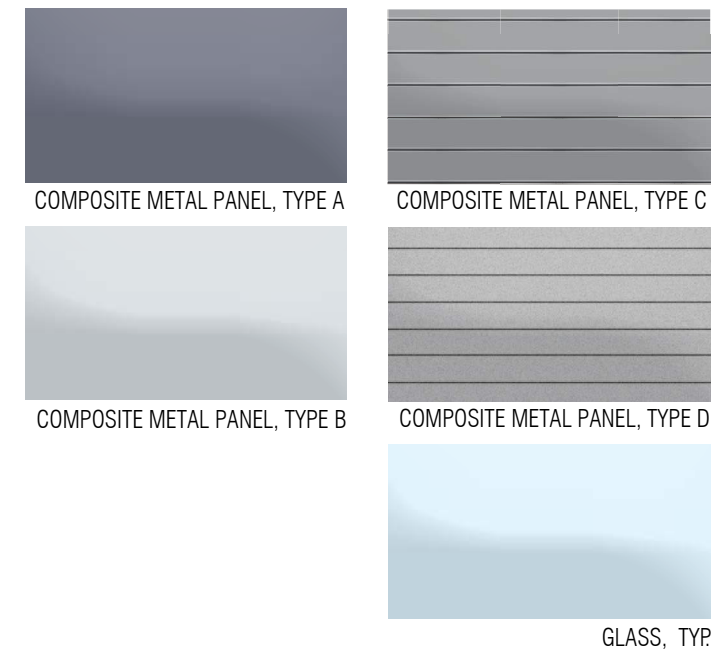
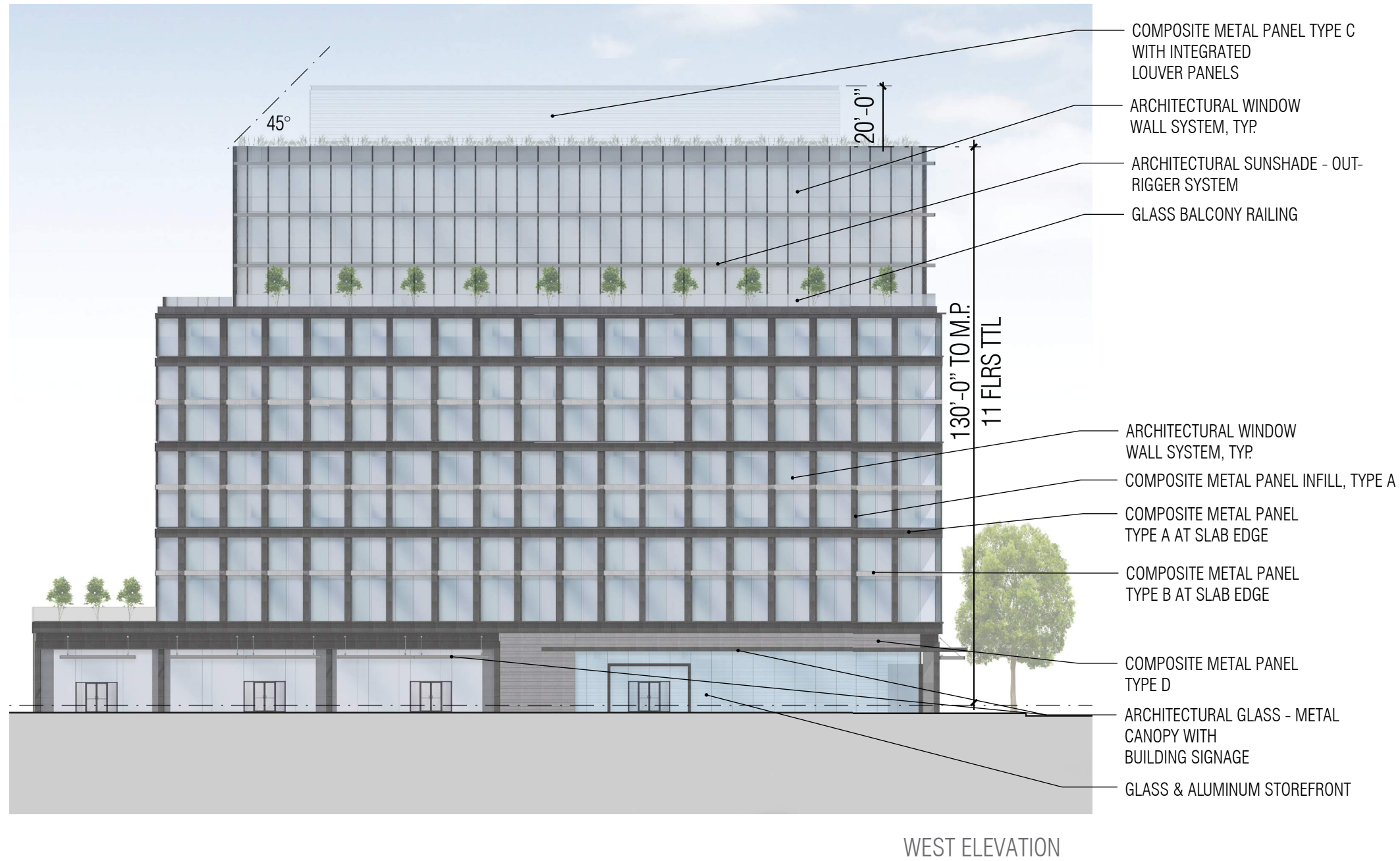
SOUTH ELEVATION - 1



**NOTE:**  
 REFER TO OVERALL ROOF PLAN FOR OVERALL BUILDING DIMENSIONS.  
 THE EXTERIOR ELEVATIONS ARE PRELIMINARY AND SHOWN FOR ILLUSTRATIVE PURPOSE ONLY  
 ALL RETAIL STOREFRONT AND SIGNAGE SUBJECT TO TENANT MODIFICATION  
 THE APPLICANT REQUESTS FLEXIBILITY TO VARY THE FINAL SELECTION OF EXTERIOR MATERIALS, BUT WILL MAINTAIN THE DESIGN INTENT AND GENERAL LEVEL OF QUALITY. COLOR RANGE AND TYPE OF MATERIALS MAY VARY BASED ON AVAILABILITY AT TIME OF CONSTRUCTION AND DESIGN DEVELOPMENT.



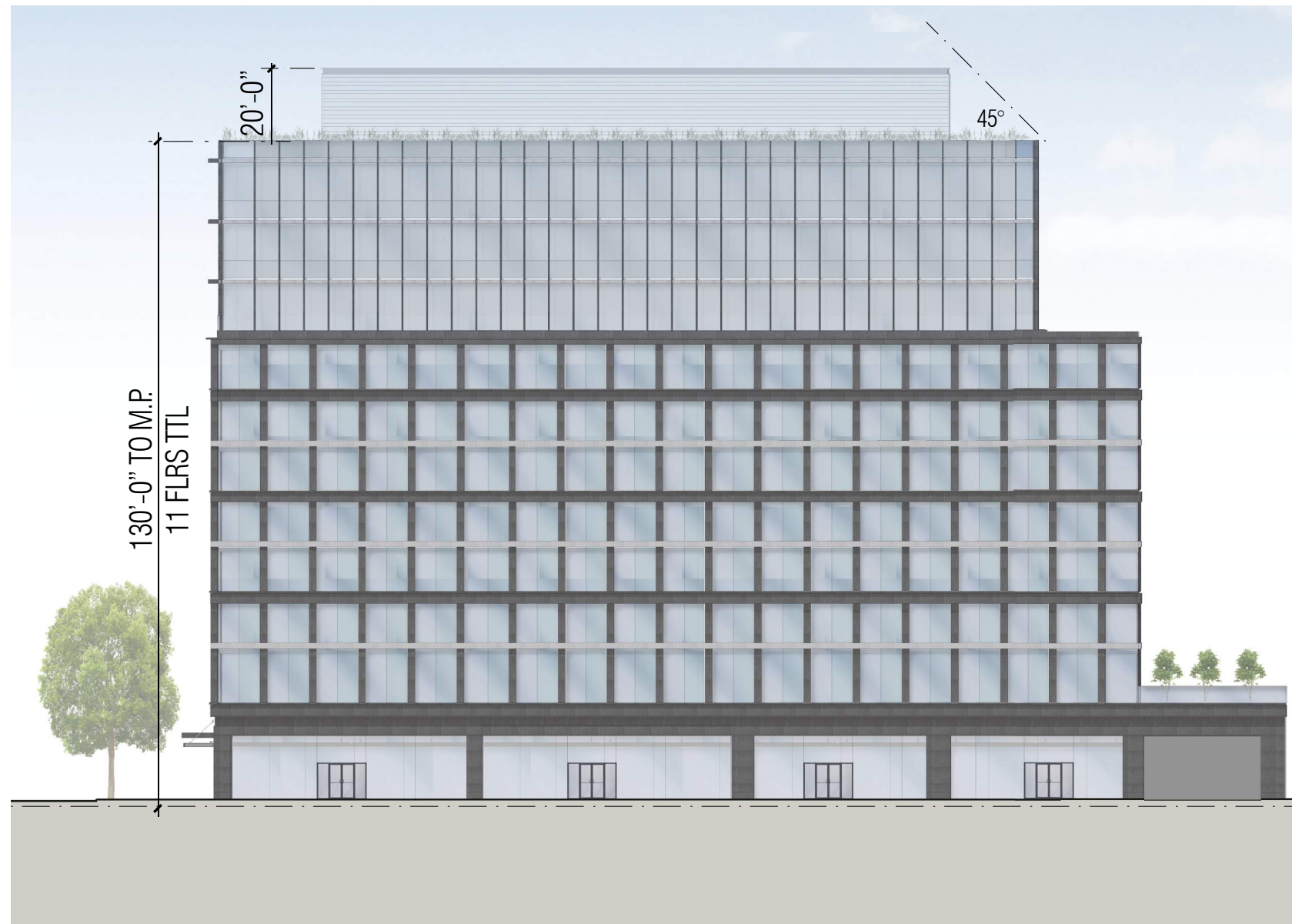
KEY PLAN



**NOTE:**  
 REFER TO OVERALL ROOF PLAN FOR OVERALL BUILDING DIMENSIONS.  
 THE EXTERIOR ELEVATIONS ARE PRELIMINARY AND SHOWN FOR ILLUSTRATIVE PURPOSE ONLY  
 ALL RETAIL STOREFRONT AND SIGNAGE SUBJECT TO TENANT MODIFICATION  
 THE APPLICANT REQUESTS FLEXIBILITY TO VARY THE FINAL SELECTION OF EXTERIOR MATERIALS, BUT WILL MAINTAIN THE DESIGN INTENT AND GENERAL LEVEL OF QUALITY. COLOR RANGE AND TYPE OF MATERIALS MAY VARY BASED ON AVAILABILITY AT TIME OF CONSTRUCTION AND DESIGN DEVELOPMENT.



KEY PLAN



EAST ELEVATION







VIEW LOOKING WEST ON MORSE ST NE

JANUARY 15, 2016



JANUARY 15, 2016

VIEW LOOKING SOUTH ON 3RD ST NE





# LEED DATA - PHASE 1

---



**LEED 2009 for New Construction and Major Renovations**  
Project Checklist



Market-Terminal - Building A-1  
PUD Submission

19	1	6	<b>Sustainable Sites</b>		Possible Points: 26
Y	?	N			
Y			Prereq 1	Construction Activity Pollution Prevention	
1			Credit 1	Site Selection	1
5			Credit 2	Development Density and Community Connectivity	5
		1	Credit 3	Brownfield Redevelopment	1
6			Credit 4.1	Alternative Transportation—Public Transportation Access	6
1			Credit 4.2	Alternative Transportation—Bicycle Storage and Changing Rooms	1
3			Credit 4.3	Alternative Transportation—Low-Emitting and Fuel-Efficient Vehicles	3
		2	Credit 4.4	Alternative Transportation—Parking Capacity	2
1			Credit 5.1	Site Development—Protect or Restore Habitat	1
1			Credit 5.2	Site Development—Maximize Open Space	1
1			Credit 6.1	Stormwater Design—Quantity Control	1
		1	Credit 6.2	Stormwater Design—Quality Control	1
		1	Credit 7.1	Heat Island Effect—Non-roof	1
1			Credit 7.2	Heat Island Effect—Roof	1
		1	Credit 8	Light Pollution Reduction	1

4	1	5	<b>Water Efficiency</b>		Possible Points: 10
Y	?	N			
Y			Prereq 1	Water Use Reduction—20% Reduction	
2		2	Credit 1	Water Efficient Landscaping	2 to 4
		2	Credit 2	Innovative Wastewater Technologies	2
2	1	1	Credit 3	Water Use Reduction	2 to 4

11	3	23	<b>Energy and Atmosphere</b>		Possible Points: 35
Y	?	N			
Y			Prereq 1	Fundamental Commissioning of Building Energy Systems	
Y			Prereq 2	Minimum Energy Performance	
Y			Prereq 3	Fundamental Refrigerant Management	
6	2	13	Credit 1	Optimize Energy Performance	1 to 19
	1	6	Credit 2	On-Site Renewable Energy	1 to 7
2			Credit 3	Enhanced Commissioning	2
		2	Credit 4	Enhanced Refrigerant Management	2
1		2	Credit 5	Measurement and Verification	3
2			Credit 6	Green Power	2

5	1	8	<b>Materials and Resources</b>		Possible Points: 14
Y	?	N			
Y			Prereq 1	Storage and Collection of Recyclables	
		3	Credit 1.1	Building Reuse—Maintain Existing Walls, Floors, and Roof	1 to 3
		1	Credit 1.2	Building Reuse—Maintain 50% of Interior Non-Structural Elements	1
2			Credit 2	Construction Waste Management	1 to 2
		2	Credit 3	Materials Reuse	1 to 2

<b>Materials and Resources, Continued</b>					
Y	?	N			
2			Credit 4	Recycled Content	1 to 2
1	1		Credit 5	Regional Materials	1 to 2
		1	Credit 6	Rapidly Renewable Materials	1
		1	Credit 7	Certified Wood	1

7	3	4	<b>Indoor Environmental Quality</b>		Possible Points: 15
Y	?	N			
Y			Prereq 1	Minimum Indoor Air Quality Performance	
Y			Prereq 2	Environmental Tobacco Smoke (ETS) Control	
	1		Credit 1	Outdoor Air Delivery Monitoring	1
		1	Credit 2	Increased Ventilation	1
1			Credit 3.1	Construction IAQ Management Plan—During Construction	1
		1	Credit 3.2	Construction IAQ Management Plan—Before Occupancy	1
1			Credit 4.1	Low-Emitting Materials—Adhesives and Sealants	1
1			Credit 4.2	Low-Emitting Materials—Paints and Coatings	1
1			Credit 4.3	Low-Emitting Materials—Flooring Systems	1
1			Credit 4.4	Low-Emitting Materials—Composite Wood and Agrifiber Products	1
		1	Credit 5	Indoor Chemical and Pollutant Source Control	1
		1	Credit 6.1	Controllability of Systems—Lighting	1
1			Credit 6.2	Controllability of Systems—Thermal Comfort	1
1			Credit 7.1	Thermal Comfort—Design	1
		NA	Credit 7.2	Thermal Comfort—Verification	1
		1	Credit 8.1	Daylight and Views—Daylight	1
1			Credit 8.2	Daylight and Views—Views	1

4		2	<b>Innovation and Design Process</b>		Possible Points: 6
Y	?	N			
1			Credit 1.1	Innovation in Design: Green Education	1
1			Credit 1.2	Innovation in Design: Walkability	1
1			Credit 1.3	Innovation in Design: Public Transportation	1
		1	Credit 1.4	Innovation in Design: TBD	1
		1	Credit 1.5	Innovation in Design: TBD	1
1			Credit 2	LEED Accredited Professional	1

<b>Regional Priority Credits</b>					
Possible Points: 4					
Y	?	N			
			Credit 1.1	Regional Priority: Specific Credit	1
			Credit 1.2	Regional Priority: Specific Credit	1
			Credit 1.3	Regional Priority: Specific Credit	1
			Credit 1.4	Regional Priority: Specific Credit	1

50	9	48	<b>Total</b>		Possible Points: 110
Certified 40 to 49 points Silver 50 to 59 points Gold 60 to 79 points Platinum 80 to 110					

\*\*NOTE: THIS LEED 2009 PROJECT SCORECARD FOR NEW CONSTRUCTION AND MAJOR RENOVATIONS HAS BEEN COMPLETED ON A PRELIMINARY BASIS. IT HAS NOT BEEN SUBMITTED TO USGBC FOR REVIEW.



**LEED 2009 for New Construction and Major Renovations**  
Project Checklist



Market-Terminal - Building B  
PUD Submission

**19 1 6 Sustainable Sites Possible Points: 26**

Y	?	N			
Y			Prereq 1	Construction Activity Pollution Prevention	
1			Credit 1	Site Selection	1
5			Credit 2	Development Density and Community Connectivity	5
	1		Credit 3	Brownfield Redevelopment	1
6			Credit 4.1	Alternative Transportation—Public Transportation Access	6
1			Credit 4.2	Alternative Transportation—Bicycle Storage and Changing Rooms	1
3			Credit 4.3	Alternative Transportation—Low-Emitting and Fuel-Efficient Vehicles	3
	2		Credit 4.4	Alternative Transportation—Parking Capacity	2
1			Credit 5.1	Site Development—Protect or Restore Habitat	1
1			Credit 5.2	Site Development—Maximize Open Space	1
1			Credit 6.1	Stormwater Design—Quantity Control	1
	1		Credit 6.2	Stormwater Design—Quality Control	1
	1		Credit 7.1	Heat Island Effect—Non-roof	1
1			Credit 7.2	Heat Island Effect—Roof	1
	1		Credit 8	Light Pollution Reduction	1

**4 1 5 Water Efficiency Possible Points: 10**

Y	?	N			
Y			Prereq 1	Water Use Reduction—20% Reduction	
2	2		Credit 1	Water Efficient Landscaping	2 to 4
	2		Credit 2	Innovative Wastewater Technologies	2
2	1	1	Credit 3	Water Use Reduction	2 to 4

**11 3 23 Energy and Atmosphere Possible Points: 35**

Y	?	N			
Y			Prereq 1	Fundamental Commissioning of Building Energy Systems	
Y			Prereq 2	Minimum Energy Performance	
Y			Prereq 3	Fundamental Refrigerant Management	
6	2	13	Credit 1	Optimize Energy Performance	1 to 19
	1	6	Credit 2	On-Site Renewable Energy	1 to 7
2			Credit 3	Enhanced Commissioning	2
	2		Credit 4	Enhanced Refrigerant Management	2
1		2	Credit 5	Measurement and Verification	3
2			Credit 6	Green Power	2

**5 1 8 Materials and Resources Possible Points: 14**

Y	?	N			
Y			Prereq 1	Storage and Collection of Recyclables	
	3		Credit 1.1	Building Reuse—Maintain Existing Walls, Floors, and Roof	1 to 3
	1		Credit 1.2	Building Reuse—Maintain 50% of Interior Non-Structural Elements	1
2			Credit 2	Construction Waste Management	1 to 2
	2		Credit 3	Materials Reuse	1 to 2

**Materials and Resources, Continued**

Y	?	N			
2			Credit 4	Recycled Content	1 to 2
1	1		Credit 5	Regional Materials	1 to 2
	1		Credit 6	Rapidly Renewable Materials	1
	1		Credit 7	Certified Wood	1

**7 3 4 Indoor Environmental Quality Possible Points: 15**

Y	?	N			
Y			Prereq 1	Minimum Indoor Air Quality Performance	
Y			Prereq 2	Environmental Tobacco Smoke (ETS) Control	
	1		Credit 1	Outdoor Air Delivery Monitoring	1
	1		Credit 2	Increased Ventilation	1
1			Credit 3.1	Construction IAQ Management Plan—During Construction	1
	1		Credit 3.2	Construction IAQ Management Plan—Before Occupancy	1
1			Credit 4.1	Low-Emitting Materials—Adhesives and Sealants	1
1			Credit 4.2	Low-Emitting Materials—Paints and Coatings	1
1			Credit 4.3	Low-Emitting Materials—Flooring Systems	1
1			Credit 4.4	Low-Emitting Materials—Composite Wood and Agrifiber Products	1
	1		Credit 5	Indoor Chemical and Pollutant Source Control	1
	1		Credit 6.1	Controllability of Systems—Lighting	1
1			Credit 6.2	Controllability of Systems—Thermal Comfort	1
1			Credit 7.1	Thermal Comfort—Design	1
	NA		Credit 7.2	Thermal Comfort—Verification	1
	1		Credit 8.1	Daylight and Views—Daylight	1
1			Credit 8.2	Daylight and Views—Views	1

**4 2 Innovation and Design Process Possible Points: 6**

Y	?	N			
1			Credit 1.1	Innovation in Design: Green Education	1
1			Credit 1.2	Innovation in Design: Walkability	1
1			Credit 1.3	Innovation in Design: Public Transportation	1
	1		Credit 1.4	Innovation in Design: TBD	1
	1		Credit 1.5	Innovation in Design: TBD	1
1			Credit 2	LEED Accredited Professional	1

**Regional Priority Credits Possible Points: 4**

Y	?	N			
			Credit 1.1	Regional Priority: Specific Credit	1
			Credit 1.2	Regional Priority: Specific Credit	1
			Credit 1.3	Regional Priority: Specific Credit	1
			Credit 1.4	Regional Priority: Specific Credit	1

**50 9 48 Total Possible Points: 110**

Certified 40 to 49 points Silver 50 to 59 points Gold 60 to 79 points Platinum 80 to 110

\*\*NOTE: THIS LEED 2009 PROJECT SCORECARD FOR NEW CONSTRUCTION AND MAJOR RENOVATIONS HAS BEEN COMPLETED ON A PRELIMINARY BASIS. IT HAS NOT BEEN SUBMITTED TO USGBC FOR REVIEW.



# LEED 2009 for Core and Shell Development

## Project Checklist



Market-Terminal - Building C-1

PUD Submission

### 22 3 2 Sustainable Sites Possible Points: 28

E	M	D			
Y			Prereq 1	Construction Activity Pollution Prevention	
1			Credit 1	Site Selection	1
5			Credit 2	Development Density and Community Connectivity	5
		1	Credit 3	Brownfield Redevelopment	1
6			Credit 4.1	Alternative Transportation—Public Transportation Access	6
2			Credit 4.2	Alternative Transportation—Bicycle Storage and Changing Rooms	2
3			Credit 4.3	Alternative Transportation—Low-Emitting and Fuel-Efficient Vehicles	3
	1		Credit 4.4	Alternative Transportation—Parking Capacity	2
1			Credit 5.1	Site Development—Protect or Restore Habitat	1
1			Credit 5.2	Site Development—Maximize Open Space	1
1			Credit 6.1	Stormwater Design—Quantity Control	1
	1		Credit 6.2	Stormwater Design—Quality Control	1
	1		Credit 7.1	Heat Island Effect—Non-roof	1
1			Credit 7.2	Heat Island Effect—Roof	1
		1	Credit 8	Light Pollution Reduction	1
1			Credit 9	Tenant Design and Construction Guidelines	1

### 5 1 4 Water Efficiency Possible Points: 10

E	M	D			
Y			Prereq 1	Water Use Reduction—20% Reduction	
2	2		Credit 1	Water Efficient Landscaping	2 to 4
	2		Credit 2	Innovative Wastewater Technologies	2
3	1		Credit 3	Water Use Reduction	2 to 4

### 18 2 17 Energy and Atmosphere Possible Points: 37

E	M	D			
Y			Prereq 1	Fundamental Commissioning of Building Energy Systems	
Y			Prereq 2	Minimum Energy Performance	
Y			Prereq 3	Fundamental Refrigerant Management	
8	2	11	Credit 1	Optimize Energy Performance	3 to 21
		4	Credit 2	On-Site Renewable Energy	4
2			Credit 3	Enhanced Commissioning	2
		2	Credit 4	Enhanced Refrigerant Management	2
3			Credit 5.1	Measurement and Verification—Base Building	3
3			Credit 5.2	Measurement and Verification—Tenant Submetering	3
2			Credit 6	Green Power	2

### 6 1 6 Materials and Resources Possible Points: 13

E	M	D			
Y			Prereq 1	Storage and Collection of Recyclables	
		5	Credit 1	Building Reuse—Maintain Existing Walls, Floors, and Roof	1 to 5
2			Credit 2	Construction Waste Management	1 to 2
		1	Credit 3	Materials Reuse	1
2			Credit 4	Recycled Content	1 to 2
2			Credit 5	Regional Materials	1 to 2
	1		Credit 6	Certified Wood	1

### 8 4 Indoor Environmental Quality Possible Points: 12

E	M	D			
Y			Prereq 1	Minimum Indoor Air Quality Performance	
Y			Prereq 2	Environmental Tobacco Smoke (ETS) Control	
1			Credit 1	Outdoor Air Delivery Monitoring	1
	1		Credit 2	Increased Ventilation	1
1			Credit 3	Construction IAQ Management Plan—During Construction	1
1			Credit 4.1	Low-Emitting Materials—Adhesives and Sealants	1
1			Credit 4.2	Low-Emitting Materials—Paints and Coatings	1
1			Credit 4.3	Low-Emitting Materials—Flooring Systems	1
1			Credit 4.4	Low-Emitting Materials—Composite Wood and Agrifiber Products	1
	1		Credit 5	Indoor Chemical and Pollutant Source Control	1
	1		Credit 6	Controllability of Systems—Thermal Comfort	1
1			Credit 7	Thermal Comfort—Design	1
	1		Credit 8.1	Daylight and Views—Daylight	1
1			Credit 8.2	Daylight and Views—Views	1

### 3 1 2 Innovation and Design Process Possible Points: 6

E	M	D			
1			Credit 1.1	Innovation in Design: Green Education	1
	1		Credit 1.2	Innovation in Design: Walkability	1
1			Credit 1.3	Innovation in Design: Transportation Access	1
		1	Credit 1.4	Innovation in Design: TBD	1
		1	Credit 1.5	Innovation in Design: TBD	1
1			Credit 2	LEED Accredited Professional	1

### 4 Regional Priority Credits Possible Points: 4

E	M	D			
		1	Credit 1.1	Regional Priority:	1
		1	Credit 1.2	Regional Priority:	1
		1	Credit 1.3	Regional Priority:	1
		1	Credit 1.4	Regional Priority:	1

### 62 12 35 Total Possible Points: 110

Certified 40 to 49 points Silver 50 to 59 points Gold 60 to 79 points Platinum 80 to 110

\*\*NOTE: THIS LEED 2009 PROJECT SCORECARD FOR NEW CONSTRUCTION AND MAJOR RENOVATIONS HAS BEEN COMPLETED ON A PRELIMINARY BASIS. IT HAS NOT BEEN SUBMITTED TO USGBC FOR REVIEW.

