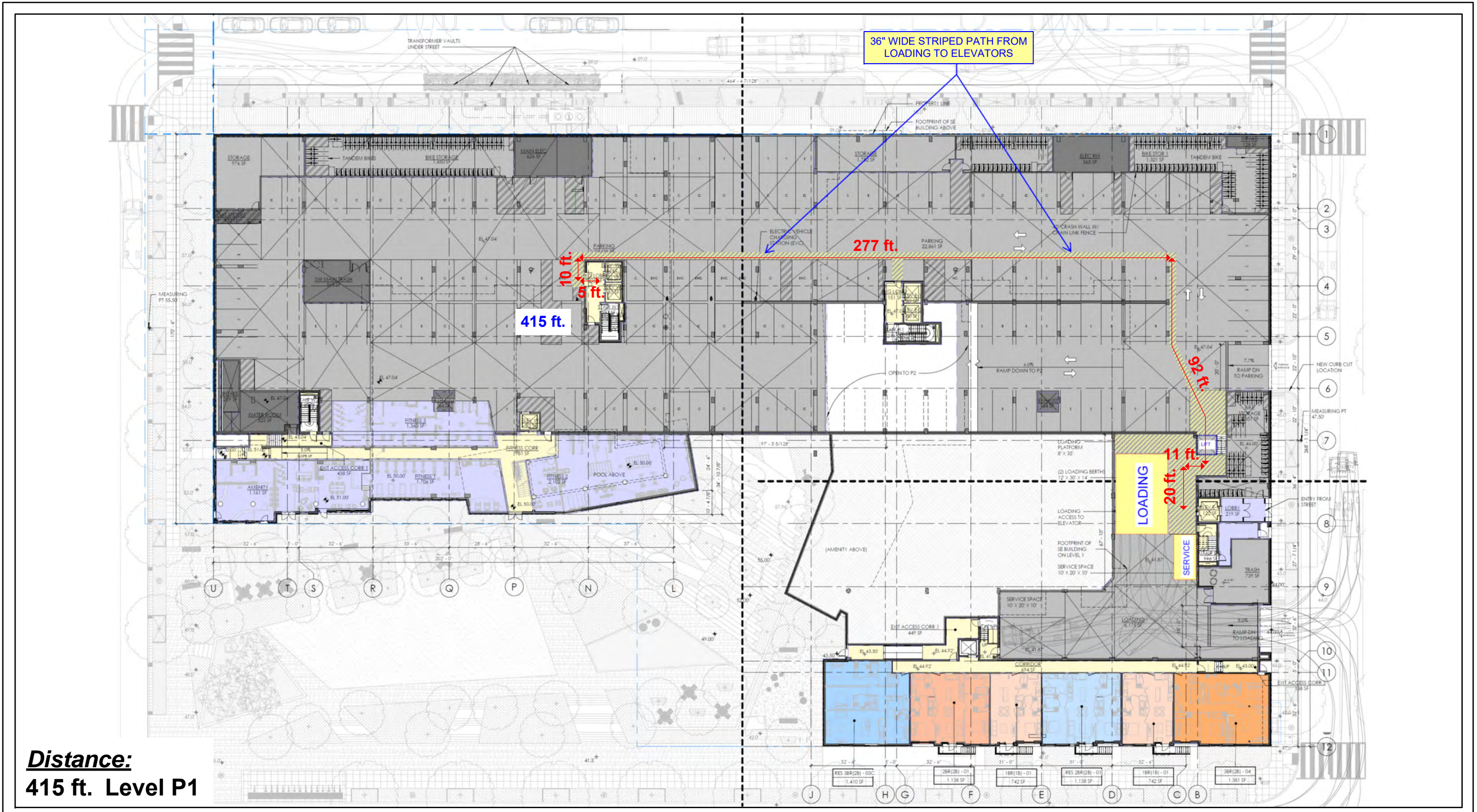


Distance:
875 ft.

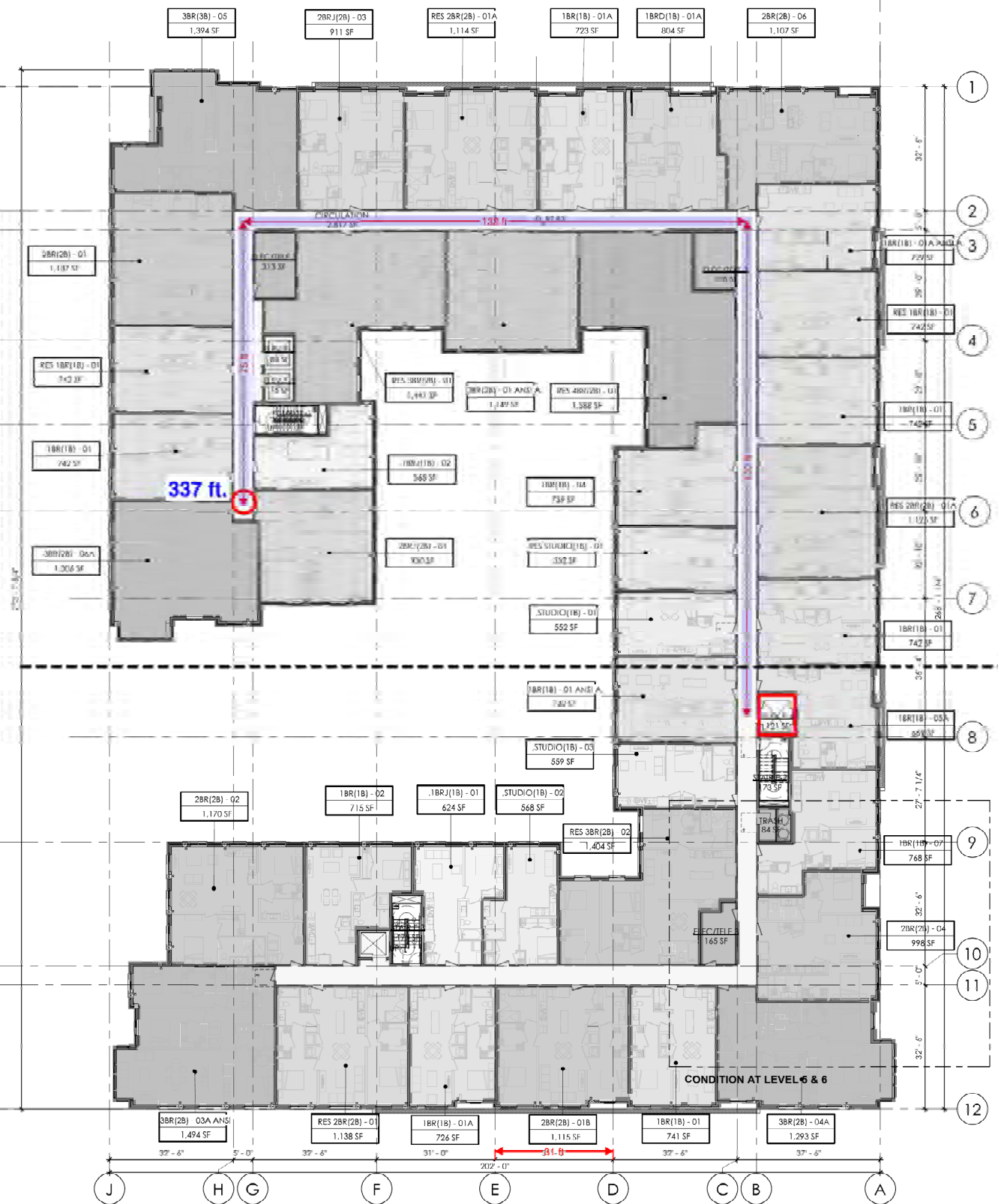


Distance:
415 ft. Level P1



Distance (West Building):
 415 ft. Level P1
 262 ft. Level 5-6
677 ft. Total

Distance (East Building):
 0 ft. Level P1
 337 ft. Level 5-6
337 ft. Total



**ATTACHMENT B:
PIERCE STREET CROSS-SECTIONS
FOR INTERIM AND ULTIMATE CONDITIONS**



PIERCE STREET - INTERIM CONDITION SECTION



PIERCE STREET - FINAL CONDITION SECTION

ATTACHMENT C: PIERCE STREET AutoTURN ANALYSIS