

SURSUM CORDA

COMPREHENSIVE SIGNAGE PLAN

POST HEARING SUBMISSION

OCTOBER 10, 2019

Applicant:

TBSC Owner I LLC
250 Gibraltar Road, Horsham, PA 19044

Land Use Counsel:

Holland + Knight, LLP
800 17th Street, NW, Suite 1100, Washington DC 20006

Architect:

WDG Architecture, PLLC
1025 Connecticut Ave NW, Suite 300, Washington DC 20036

Civil:

Bohler DC
1301 Pennsylvania Ave., NW Ste 825, Washington Dc, 20004

Landscape:

Parker Rodriguez
101 N. Union St., Ste. 320, Alexandria, VA 22314

Traffic:

Gorove / Slade Associates, Inc.
1140 Connecticut Ave NW, Ste 600, Washington, DC 20036

**YOUNTS
DESIGN
INC.**

Submittals for approval by Younts Design prior to fabrication and installation, including but not limited to shop drawings of all graphics with seal of registered engineer and samples of all materials, colors, applications and finishes.

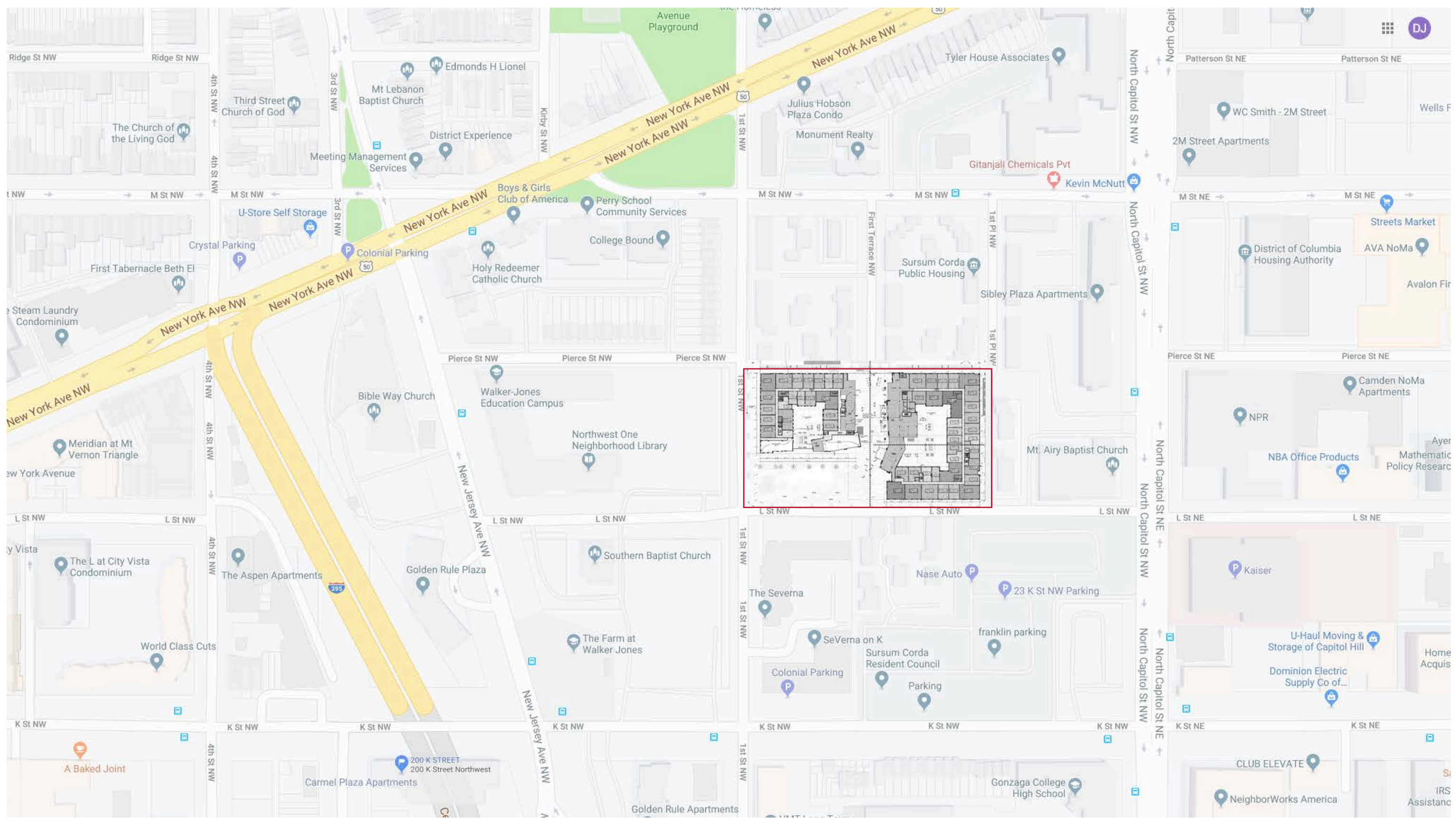
Verification of conditions in field prior to submission of shop drawings and production of samples.

Coordination with contractors in others trades, including but not limited to: electrical, mechanical, plumbing, fire, and landscaping.

Structural integrity, electrical function, and connections to power and communications sources as specified by the owner.

Final design and engineering of components including all aspects of mounting, fabrication, anchoring and attachment.

Field Verification Required | Sign Fabricator is responsible for:
© Younts Design Inc.



SURSUM CORDA

Y YOUNTS DESIGN INC.
3600 Clipper Mill Rd. Suite 410
Baltimore, MD 21211
I 443.825.4100

COMPREHENSIVE SIGN PLAN

Package Name
COMPREHENSIVE SIGN PLAN
R4

10/09/19
Sheet
2

VICINITY PLAN

Field Verification Required | Sign Fabricator is responsible for:
 © Younts Design Inc.

Final design and engineering of components indicated including all aspects of mounting, fabrication, anchoring and attachment.

Structural integrity, electrical function, and connections to power and communications sources as specified by the owner.

Coordination with contractors in others trades, including but not limited to: civil, structural, mechanical, electrical, plumbing, and landscaping.

Verification of conditions in field prior to submission of shop drawings and production of samples.

Submittals for approval by Younts Design prior to fabrication and installation, including but not limited to shop drawings of all graphics with seal of registered engineer and samples of all materials, colors, applications and finishes.



(SW) BUILDING - SOUTH ELEVATION

Submittals for approval by Younts Design prior to fabrication and installation, including but not limited to shop drawings of all graphics with seal of registered engineer and samples of all materials, colors, applications and finishes.

Verification of conditions in field prior to submission of shop drawings and production of samples.

Coordination with contractors in others trades, including but not limited to: structural, mechanical, electrical, plumbing, and landscaping.

Structural integrity, electrical function, and connections to power and communications sources as specified by the owner.

Final design and engineering of components indicated including all aspects of mounting, fabrication, anchoring and attachment.

Field Verification Required | Sign Fabricator is responsible for:

© Younts Design Inc.



1 NORTH ELEVATION
SCALE: 1/8" = 1'-0"

(SW) BUILDING - NORTH ELEVATION

Submittals for approval by Younts Design prior to fabrication and installation, including but not limited to shop drawings of all graphics with seal of registered engineer and samples of all materials, colors, applications and finishes.

Verification of conditions in field prior to submission of shop drawings and production of samples.

Coordination with contractors in others trades, including but not limited to structural, mechanical, electrical, plumbing, and landscaping.

Structural integrity, electrical function, and connections to power and communications sources as specified by the owner.

Final design and engineering of components indicated, including all aspects of mounting, fabrication, anchoring and attachment.

Field Verification Required | Sign Fabricator is responsible for:
© Younts Design Inc.



① WEST ELEVATION
SCALE: 1/8" = 1'-0"

(SW) BUILDING - WEST ELEVATION

Submittals for approval by Younts Design prior to fabrication and installation, including but not limited to shop drawings of all graphics with seal of registered engineer and samples of all materials, colors, applications and finishes.

Verification of conditions in field prior to submission of shop drawings and production of samples.

Coordination with contractors in others trades, including but not limited to: electrical, mechanical, plumbing, fire, structural, and landscaping.

Structural integrity, electrical function, and connections to power and communications sources as specified by the owner.

Final design and engineering of components indicated, including all aspects of mounting, fabrication, anchoring and attachment.

Field Verification Required | Sign Fabricator is responsible for:
© Younts Design Inc.



1 EAST ELEVATION
SCALE: 1/8" = 1'-0"

(SW) BUILDING - EAST ELEVATION

Field Verification Required | Sign Fabricator is responsible for:
 © Younts Design Inc.

Final design and engineering of components indicated including all aspects of mounting, fabrication, anchoring and attachment.

Structural integrity, electrical function, and connections to power and communications sources as specified by the owner.

Coordination with contractors in others trades, including but not limited to: mechanical, electrical, plumbing, fire, structural, and landscaping.

Verification of conditions in field prior to submission of shop drawings and production of samples.

Submittals for approval by Younts Design prior to fabrication and installation, including but not limited to shop drawings of all graphics with seal of registered engineer and samples of all materials, colors, applications and finishes.



1 SOUTH ELEVATION
 SCALE: 1/8" = 1'-0"

(SE) BUILDING - SOUTH ELEVATION

Field Verification Required | Sign Fabricator is responsible for:
 © Younts Design Inc.

Final design and engineering of components indicated including all aspects of mounting, fabrication, anchoring and attachment.

Structural integrity, electrical function, and connections to power and communications sources as specified by the owner.

Coordination with contractors in others trades, including but not limited to: mechanical, electrical, plumbing, fire, and landscaping.

Verification of conditions in field prior to submission of shop drawings and production of samples.

Submittals for approval by Younts Design prior to fabrication and installation, including but not limited to shop drawings of all graphics with seal of registered engineer and samples of all materials, colors, applications and finishes.



(SE) BUILDING - EAST ELEVATION

Field Verification Required | Sign Fabricator is responsible for:
 © Younts Design Inc.

Final design and engineering of components indicated including all aspects of mounting, fabrication, anchoring and attachment.

Structural integrity, electrical function, and connections to power and communications sources as specified by the owner.

Coordination with contractors in others trades, including but not limited to: mechanical, electrical, plumbing, fire, structural, and landscaping.

Verification of conditions in field prior to submission of shop drawings and production of samples.

Submittals for approval by Younts Design prior to fabrication and installation, including but not limited to shop drawings of all graphics with seal of registered engineer and samples of all materials, colors, applications and finishes.



(SE) BUILDING - WEST ELEVATION