

Sursum Corda PUD

Second Stage PUD Application for Phase 1

POST HEARING SUBMISSION

REVISED PLANS - P1 & MAIN ROOF

OCTOBER 10, 2019

Applicant:

TBSC Owner I LLC
250 Gibraltar Road, Horsham, PA 19044

Land Use Counsel:

Holland + Knight, LLP
800 17th Street, NW, Suite 1100, Washington DC 20006

Architect:

WDG Architecture, PLLC
1025 Connecticut Ave NW, Suite 300, Washington DC 20036

Civil:

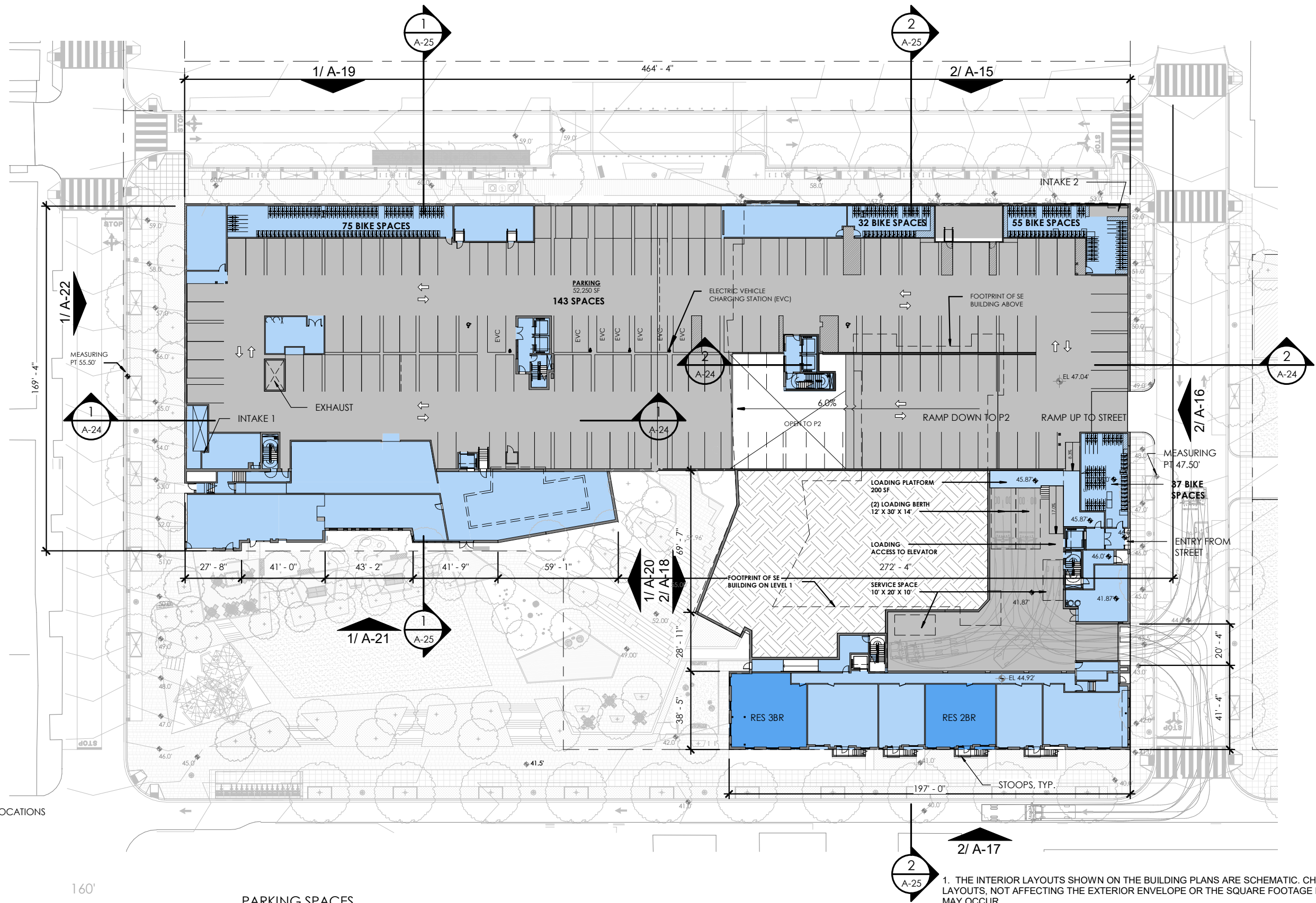
Bohler DC
1301 Pennsylvania Ave., NW Ste 825, Washington Dc, 20004

Landscape:

Parker Rodriguez
101 N. Union St., Ste. 320, Alexandria, VA 22314

Traffic:

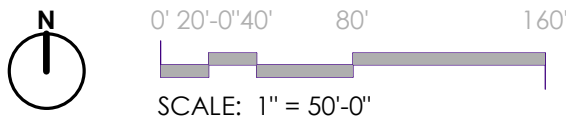
Gorove / Slade Associates, Inc.
1140 Connecticut Ave NW, Ste 600, Washington, DC 20036



RESERVED UNITS

# BEDROOMS	MIN SIZE
39 RES 1BR	715 SF
48 RES 2BR	1,100 SF
26 RES 3BR	1,390 SF
9 RES 4BR	1,580 SF

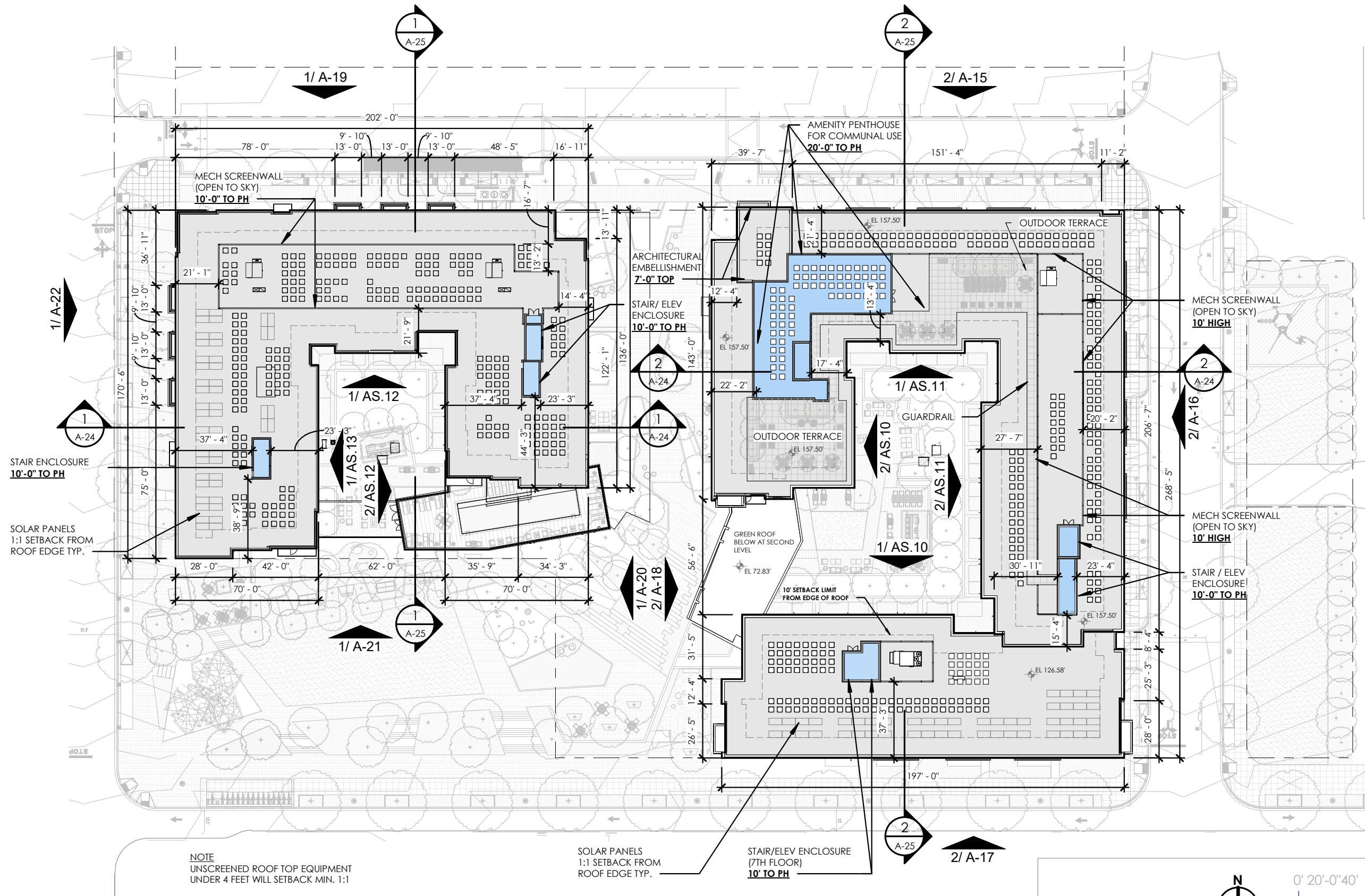
LEGEND
 RESERVED UNIT LOCATIONS



PARKING SPACES

TYPE	ANGLE	SIZE	DRIVE AISLE
STANDARD	90 DEGREE	9' X 18'	20' (2 WAY)
COMPACT (MAX 40%)	90 DEGREE	8' X 16'	20' (2 WAY)

1. THE INTERIOR LAYOUTS SHOWN ON THE BUILDING PLANS ARE SCHEMATIC. CHANGES TO THE LAYOUTS, NOT AFFECTING THE EXTERIOR ENVELOPE OR THE SQUARE FOOTAGE DISTRIBUTION MAY OCCUR.
2. UNIT AREAS: RESERVED AND RENTAL UNIT AREAS ARE CALCULATED FROM EXTERIOR SIDE OF EXTERIOR WALLS, CENTERLINE OF DEMISING WALLS, AND CORRIDOR SIDE OF CORRIDOR WALLS.
3. THE NUMBER OF RESERVED UNITS, THE UNIT MIX, AND LOCATION OF RESERVED UNITS MAY BE ADJUSTED TO REFLECT THE ACTUAL NUMBER OF SURSUM CORDA HOUSEHOLDS THAT ELECT TO OCCUPY A RESERVED UNIT, THEIR HOUSEHOLD COMPOSITION, AND/OR HUD STANDARDS RELATING TO THE NUMBER OF BEDROOMS REQUIRED FOR EACH HOUSEHOLD AT TIME OF PERMITTING.



NOTE:
 APPROXIMATELY 2057 SQUARE FEET OF SOLAR PANELS ARE PROPOSED. THE ACTUAL LOCATION OF THE SOLAR PANELS MAY BE REVISED UPON FINAL SELECTION OF THE SOLAR PANEL MANUFACTURER AND INSTALLATION GUIDANCE.

POST HEARING SUBMISSION

WDG WA17025 | OCTOBER 10, 2019

FLOOR PLANS - MAIN ROOF (revised)

A-13

TBSC OWNER I LLC | SURSUM CORDA SOUTH PARCEL | 1112 FIRST TERRACE, NW WASHINGTON, DC 20001

