

# Sursum Corda PUD

Second Stage PUD Application for Phase 1

## POST HEARING SUBMISSION

### SUPPLEMENTAL ELEVATIONS - COURTYARD

OCTOBER 10, 2019

#### **Applicant:**

TBSC Owner I LLC  
250 Gibraltar Road, Horsham, PA 19044

#### **Land Use Counsel:**

Holland + Knight, LLP  
800 17th Street, NW, Suite 1100, Washington DC 20006

#### **Architect:**

WDG Architecture, PLLC  
1025 Connecticut Ave NW, Suite 300, Washington DC 20036

#### **Civil:**

Bohler DC  
1301 Pennsylvania Ave., NW Ste 825, Washington Dc, 20004

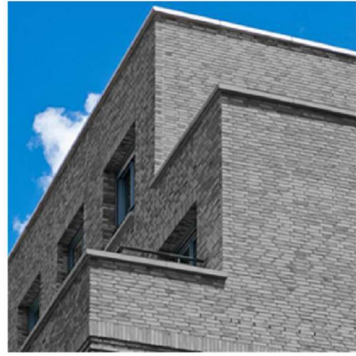
#### **Landscape:**

Parker Rodriguez  
101 N. Union St., Ste. 320, Alexandria, VA 22314

#### **Traffic:**

Gorove / Slade Associates, Inc.  
1140 Connecticut Ave NW, Ste 600, Washington, DC 20036





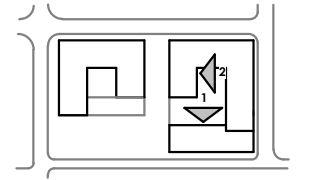
**A** BRICK MASONRY



**B** ARCHITECTURAL PANEL SYSTEM



**C** EXTERIOR INSULATION FINISHING SYSTEM (EIFS)



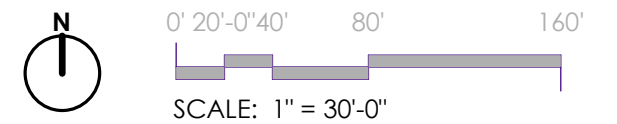
PRECEDENTS



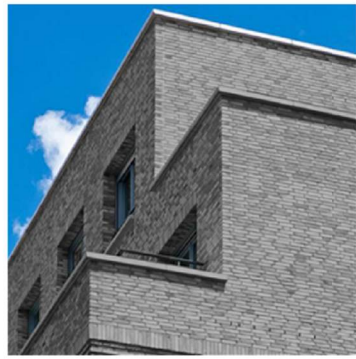
1- SOUTHEAST BUILDING - COURTYARD FACING SOUTH



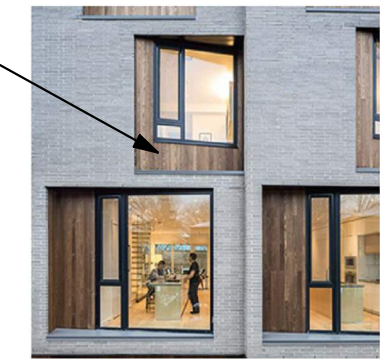
2- SOUTHEAST BUILDING - COURTYARD FACING WEST



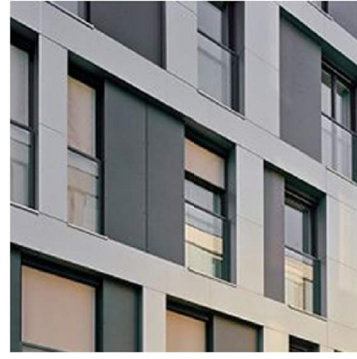




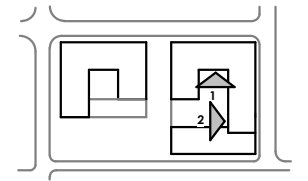
**A** BRICK MASONRY



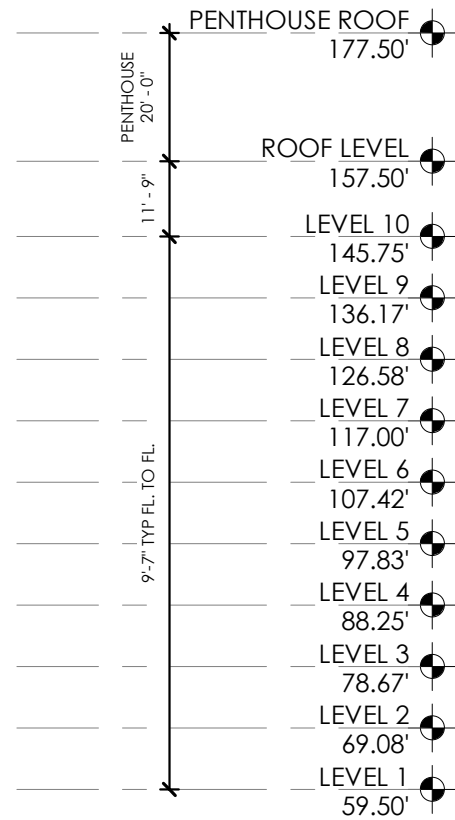
**B** ARCHITECTURAL PANEL SYSTEM



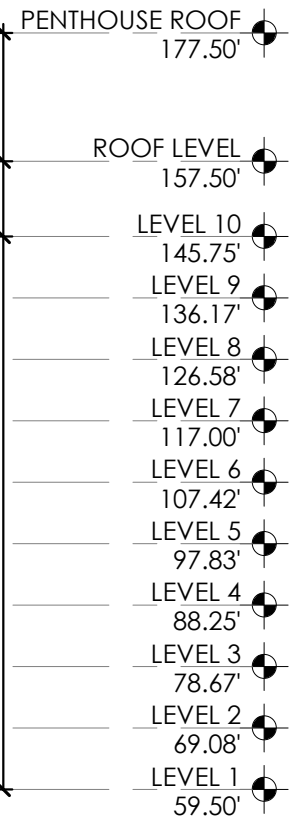
**C** EXTERIOR INSULATION FINISHING SYSTEM (EIFS)



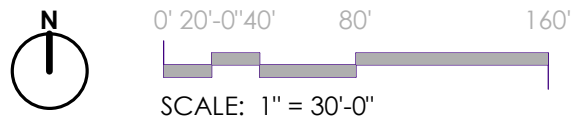
PRECEDENTS



1- SOUTHEAST BUILDING - COURTYARD FACING NORTH



2- SOUTHEAST BUILDING - COURTYARD FACING EAST







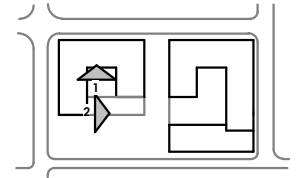
**A** BRICK MASONRY



**B** ARCHITECTURAL PANEL SYSTEM



**C** EXTERIOR INSULATION FINISHING SYSTEM (EIFS)

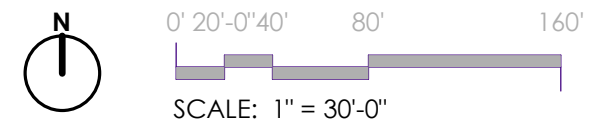


PRECEDENTS



1- SOUTHWEST BUILDING - COURTYARD FACING NORTH

2- SOUTHWEST BUILDING - COURTYARD FACING EAST







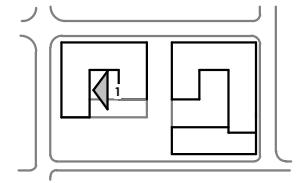
**A** BRICK MASONRY



**B** ARCHITECTURAL PANEL SYSTEM



**C** EXTERIOR INSULATION FINISHING SYSTEM (EIFS)



PRECEDENTS



1- SOUTHWEST BUILDING - COURTYARD FACING WEST

