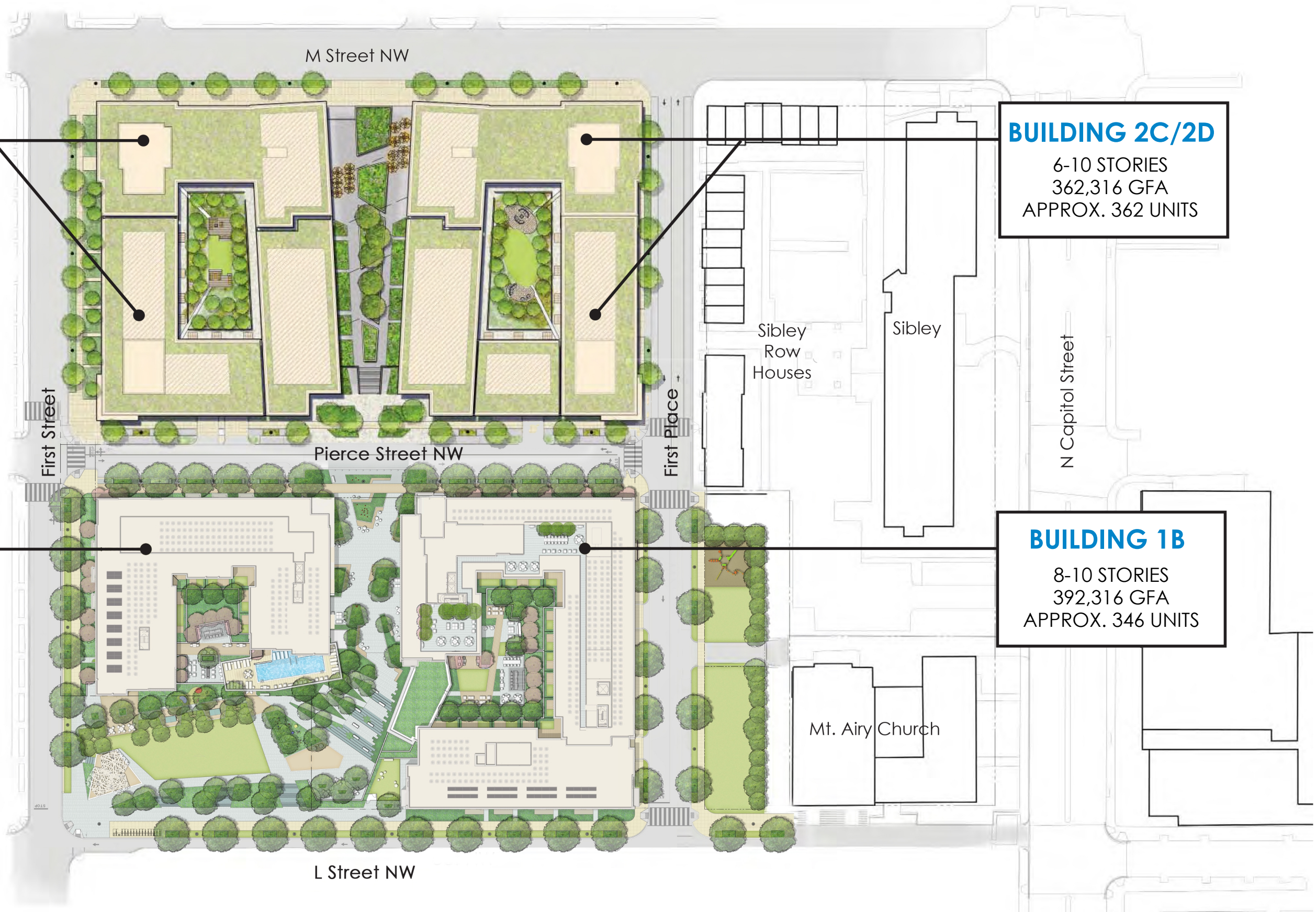


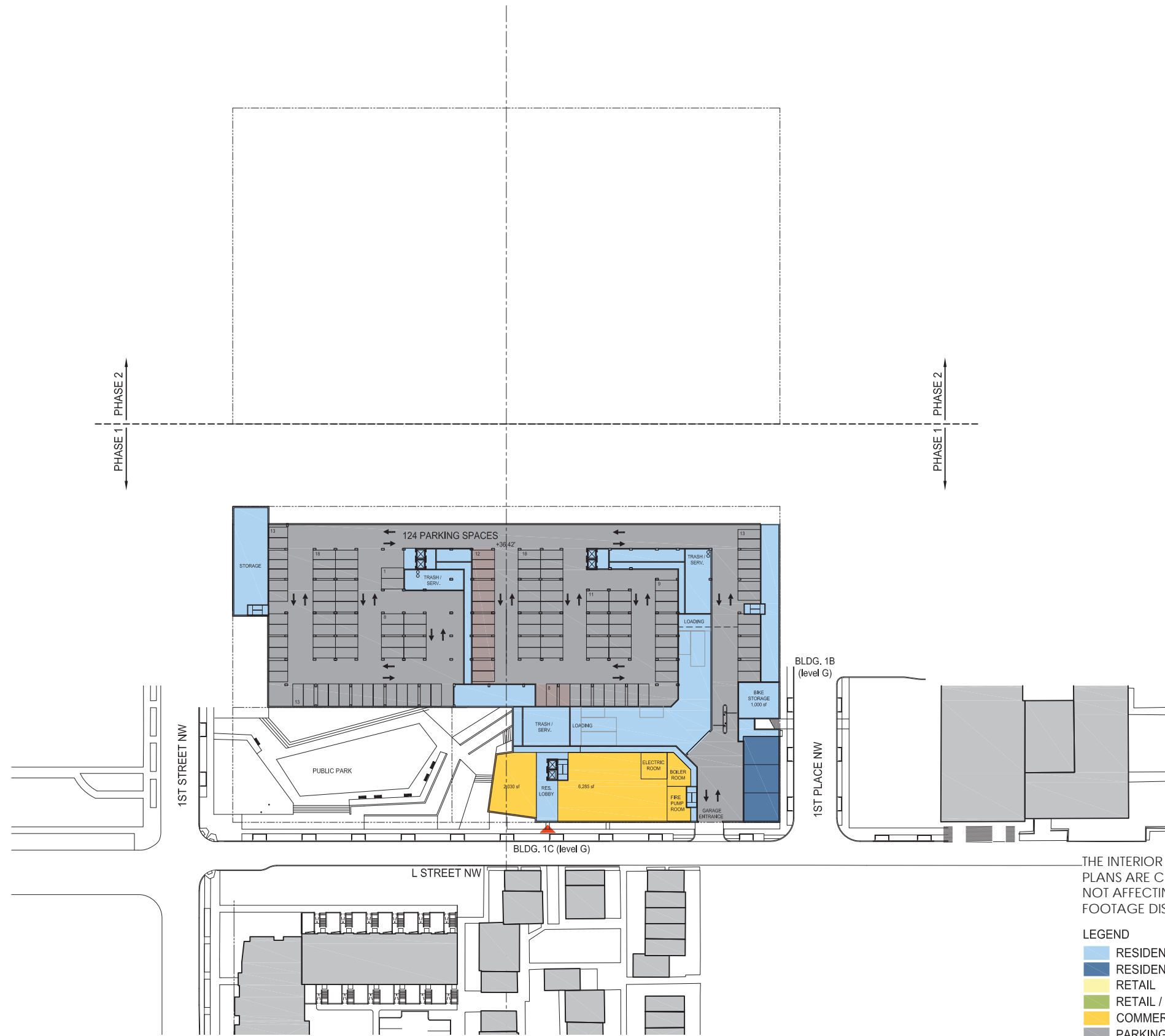
BUILDING 2A/2B
 6-11 STORIES
 351,106 GFA
 APPROX. 348 UNITS

BUILDING 2C/2D
 6-10 STORIES
 362,316 GFA
 APPROX. 362 UNITS

BUILDING 1A
 9 STORIES
 239,348 GFA
 APPROX. 216 UNITS

BUILDING 1B
 8-10 STORIES
 392,316 GFA
 APPROX. 346 UNITS

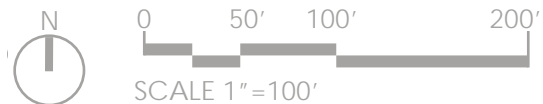


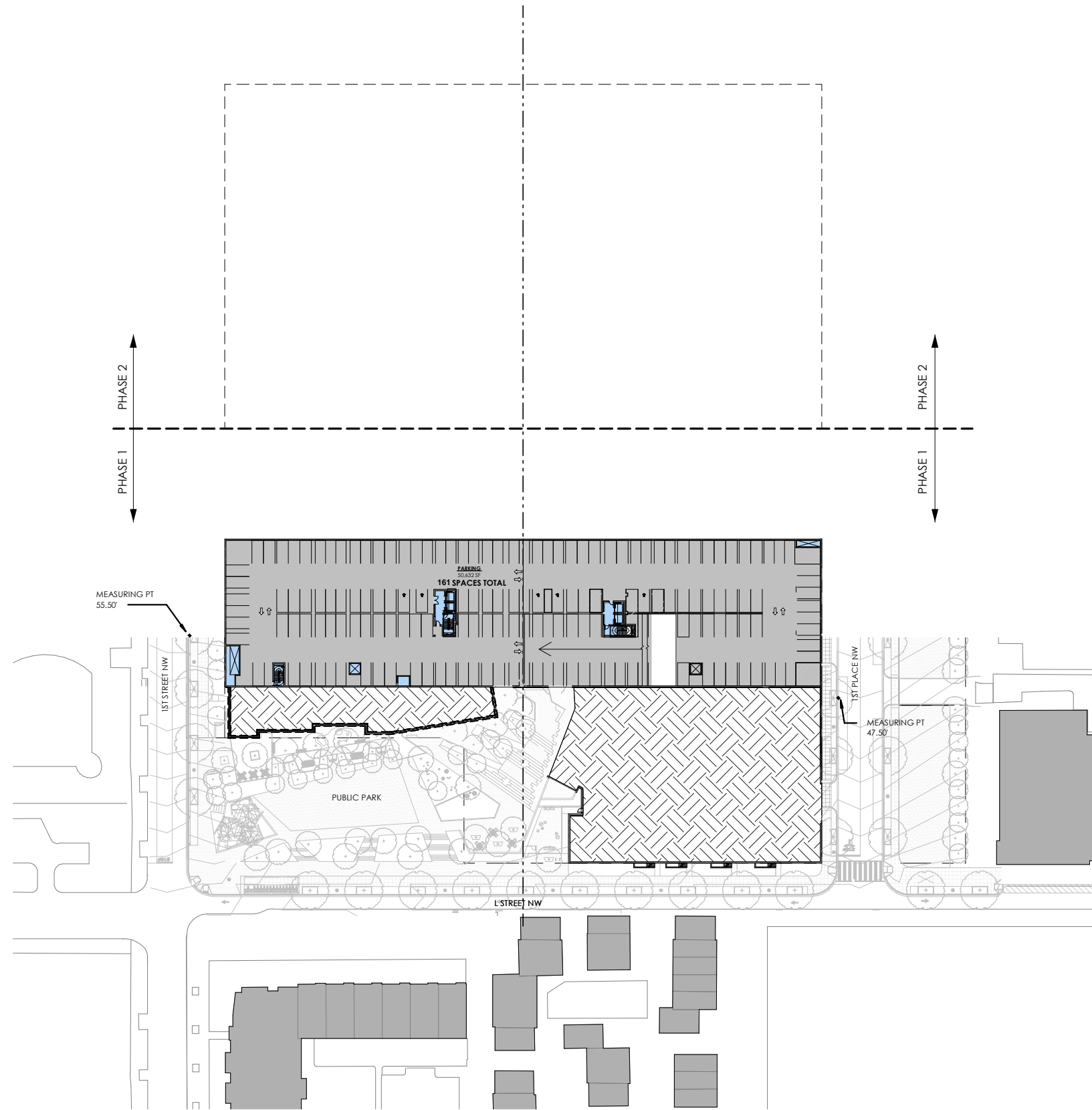


THE INTERIOR LAYOUTS AS SHOWN ON THE BUILDING PLANS ARE CONCEPTUAL. CHANGES TO THE LAYOUTS, NOT AFFECTING THE EXTERIOR ENVELOPE OR THE SQUARE FOOTAGE DISTRIBUTION MAY OCCUR.

LEGEND

- RESIDENTIAL & COMMON / SERVICE SPACE
- RESIDENTIAL 2-STORY WALK UPS
- RETAIL
- RETAIL / PROFESSIONAL OFFICE
- COMMERCIAL / COMMUNITY / AMENITY
- PARKING - RESIDENTIAL
- PARKING - RETAIL / PROFESSIONAL OFFICE
- PARKING - COMMERCIAL / COMMUNITY / AMENITY
- ▲ MAIN ENTRANCE TO BUILDING



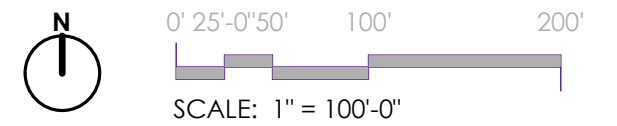


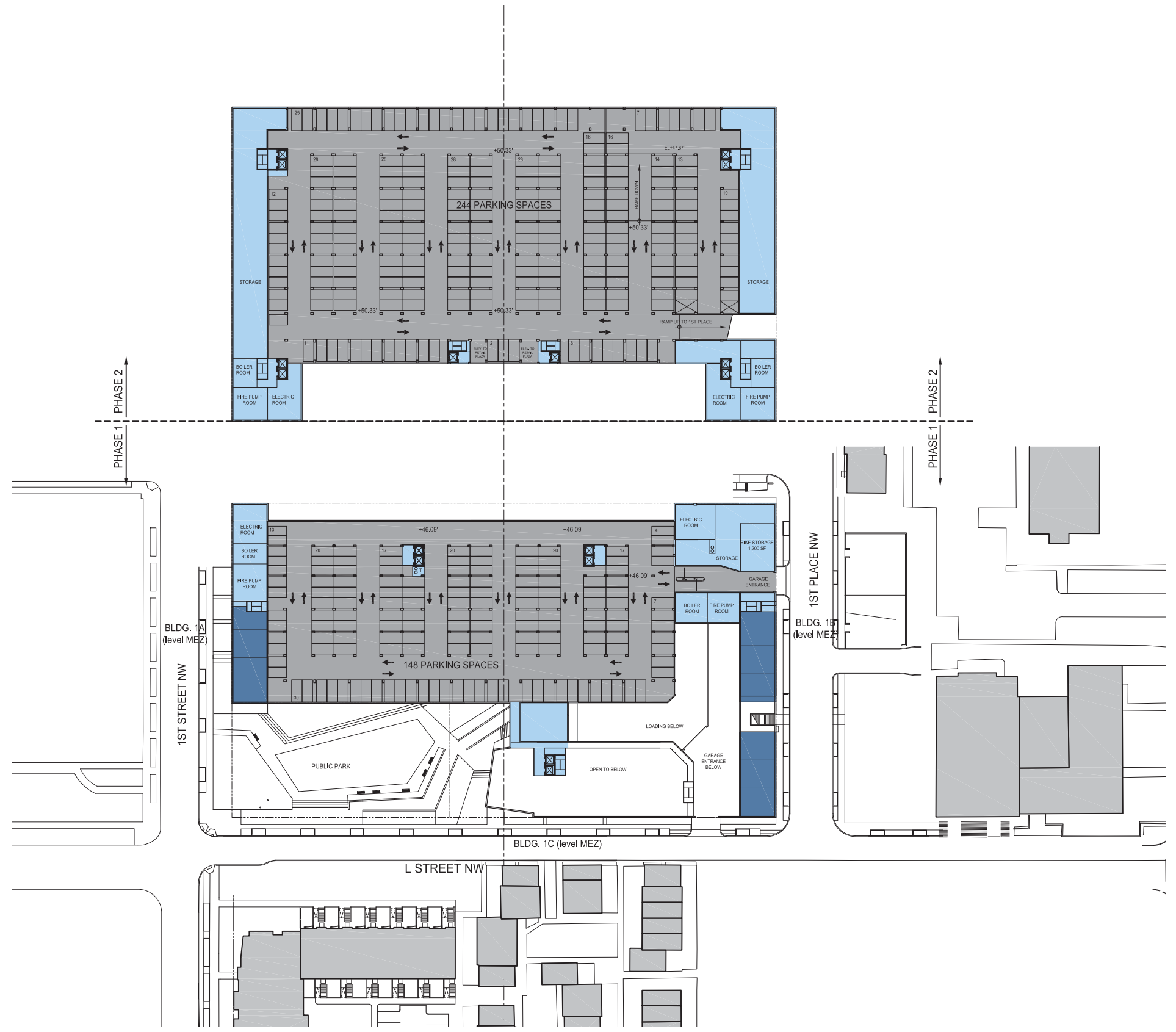
THE INTERIOR LAYOUTS AS SHOWN ON THE BUILDING PLANS ARE CONCEPTUAL. CHANGES TO THE LAYOUTS, NOT AFFECTING THE EXTERIOR ENVELOPE OR THE SQUARE FOOTAGE DISTRIBUTION MAY OCCUR.

LEGEND

- RESIDENTIAL & COMMON / SERVICE SPACE
- RESIDENTIAL 2-STORY WALK UPS
- RETAIL
- RETAIL / PROFESSIONAL OFFICE
- COMMERCIAL / COMMUNITY / AMENITY
- PARKING - RESIDENTIAL
- PARKING - RETAIL / PROFESSIONAL OFFICE
- PARKING - COMMERCIAL / COMMUNITY / AMENITY
- MAIN ENTRANCE TO BUILDING

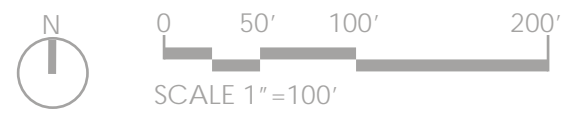
NOTE: THE INTERIOR LAYOUTS SHOWN ON THE BUILDING PLANS ARE SCHEMATIC. CHANGES TO THE LAYOUTS, NOT AFFECTING THE EXTERIOR ENVELOPE OR THE SQUARE FOOTAGE DISTRIBUTION MAY OCCUR.

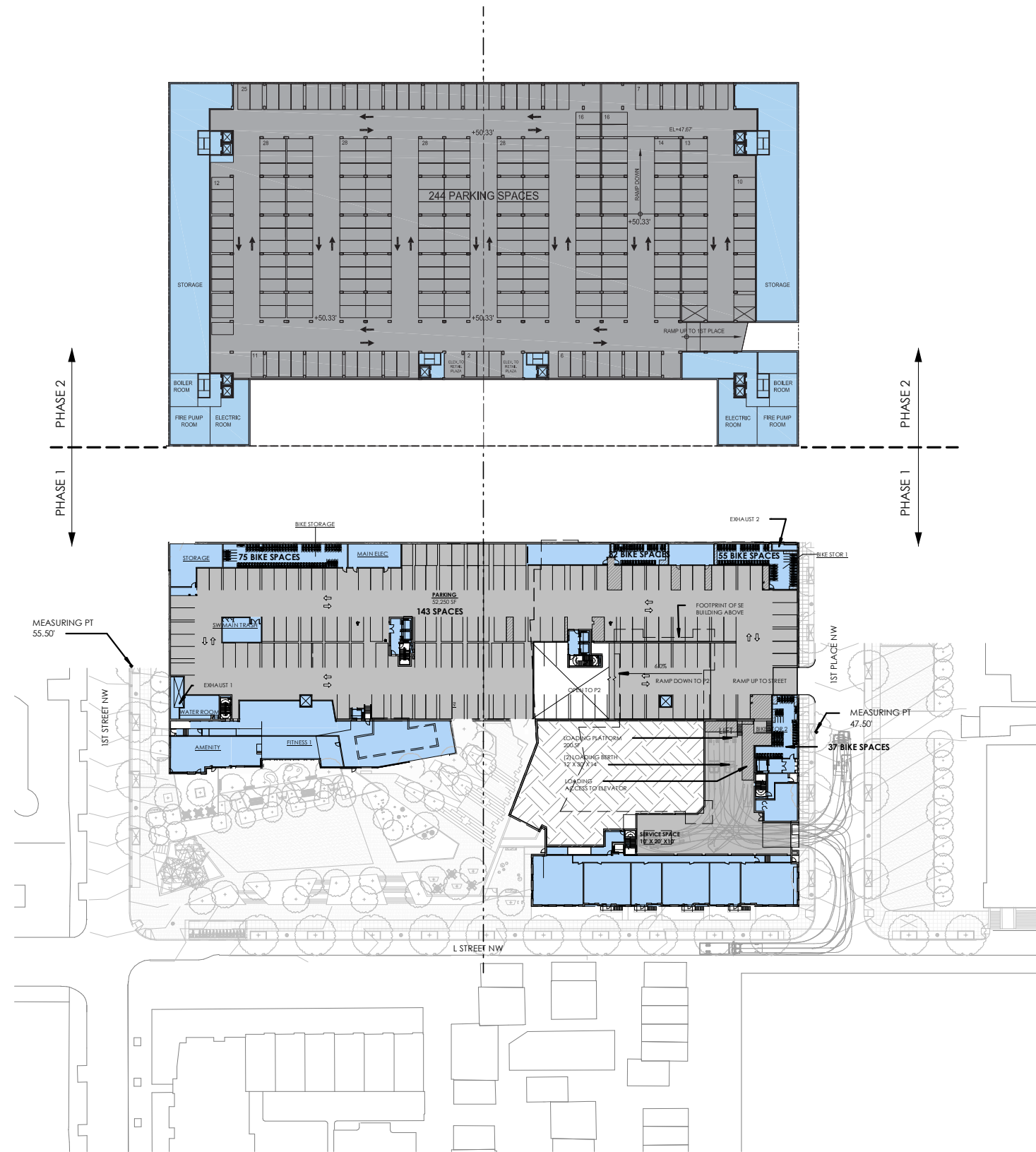




THE INTERIOR LAYOUTS AS SHOWN ON THE BUILDING PLANS ARE CONCEPTUAL. CHANGES TO THE LAYOUTS, NOT AFFECTING THE EXTERIOR ENVELOPE OR THE SQUARE FOOTAGE DISTRIBUTION MAY OCCUR.

- LEGEND
- RESIDENTIAL & COMMON / SERVICE SPACE
 - RESIDENTIAL 2-STORY WALK UPS
 - RETAIL
 - RETAIL / PROFESSIONAL OFFICE
 - COMMERCIAL / COMMUNITY / AMENITY
 - PARKING - RESIDENTIAL
 - PARKING - RETAIL / PROFESSIONAL OFFICE
 - PARKING - COMMERCIAL / COMMUNITY / AMENITY
 - MAIN ENTRANCE TO BUILDING





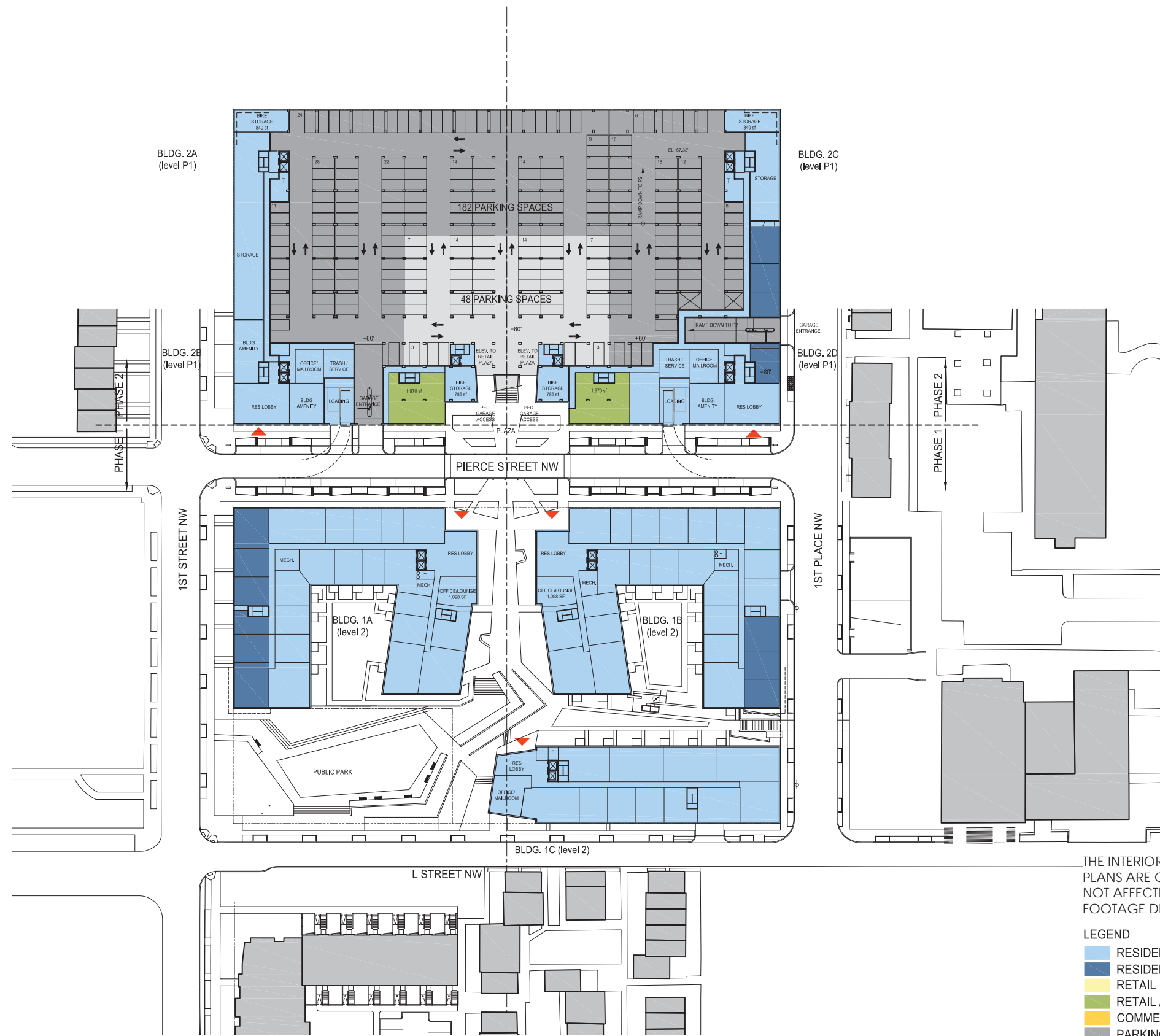
THE INTERIOR LAYOUTS AS SHOWN ON THE BUILDING PLANS ARE CONCEPTUAL. CHANGES TO THE LAYOUTS, NOT AFFECTING THE EXTERIOR ENVELOPE OR THE SQUARE FOOTAGE DISTRIBUTION MAY OCCUR.

LEGEND

- RESIDENTIAL & COMMON / SERVICE SPACE
- RESIDENTIAL 2-STORY WALK UPS
- RETAIL
- RETAIL / PROFESSIONAL OFFICE
- COMMERCIAL / COMMUNITY / AMENITY
- PARKING - RESIDENTIAL
- PARKING - RETAIL / PROFESSIONAL OFFICE
- PARKING - COMMERCIAL / COMMUNITY / AMENITY
- MAIN ENTRANCE TO BUILDING

NOTE: THE INTERIOR LAYOUTS SHOWN ON THE BUILDING PLANS ARE SCHEMATIC. CHANGES TO THE LAYOUTS, NOT AFFECTING THE EXTERIOR ENVELOPE OR THE SQUARE FOOTAGE DISTRIBUTION MAY OCCUR.

Proposed Level P1 (Phase 1) & Level P2 (Phase 2) Floor Plans A.19a



THE INTERIOR LAYOUTS AS SHOWN ON THE BUILDING PLANS ARE CONCEPTUAL. CHANGES TO THE LAYOUTS, NOT AFFECTING THE EXTERIOR ENVELOPE OR THE SQUARE FOOTAGE DISTRIBUTION MAY OCCUR.

LEGEND

- RESIDENTIAL & COMMON / SERVICE SPACE
- RESIDENTIAL 2-STORY WALK UPS
- RETAIL
- RETAIL / PROFESSIONAL OFFICE
- COMMERCIAL / COMMUNITY / AMENITY
- PARKING - RESIDENTIAL
- PARKING - RETAIL / PROFESSIONAL OFFICE
- PARKING - COMMERCIAL / COMMUNITY / AMENITY
- MAIN ENTRANCE TO BUILDING

