

# Sursum Corda PUD

Second Stage PUD Application for Phase 1

JULY 05, 2019

## Comprehensive Signage Plan

**Applicant:**

TBSC Owner I LLC  
250 Gibraltar Road, Horsham, PA 19044

**Land Use Counsel:**

Holland + Knight, LLP  
800 17th Street, NW, Suite 1100, Washington DC 20006

**Architect:**

WDG Architecture, PLLC  
1025 Connecticut Ave NW, Suite 300, Washington DC 20036

**Civil:**

Bohler DC  
1301 Pennsylvania Ave., NW Ste 825, Washington Dc, 20004

**Landscape:**

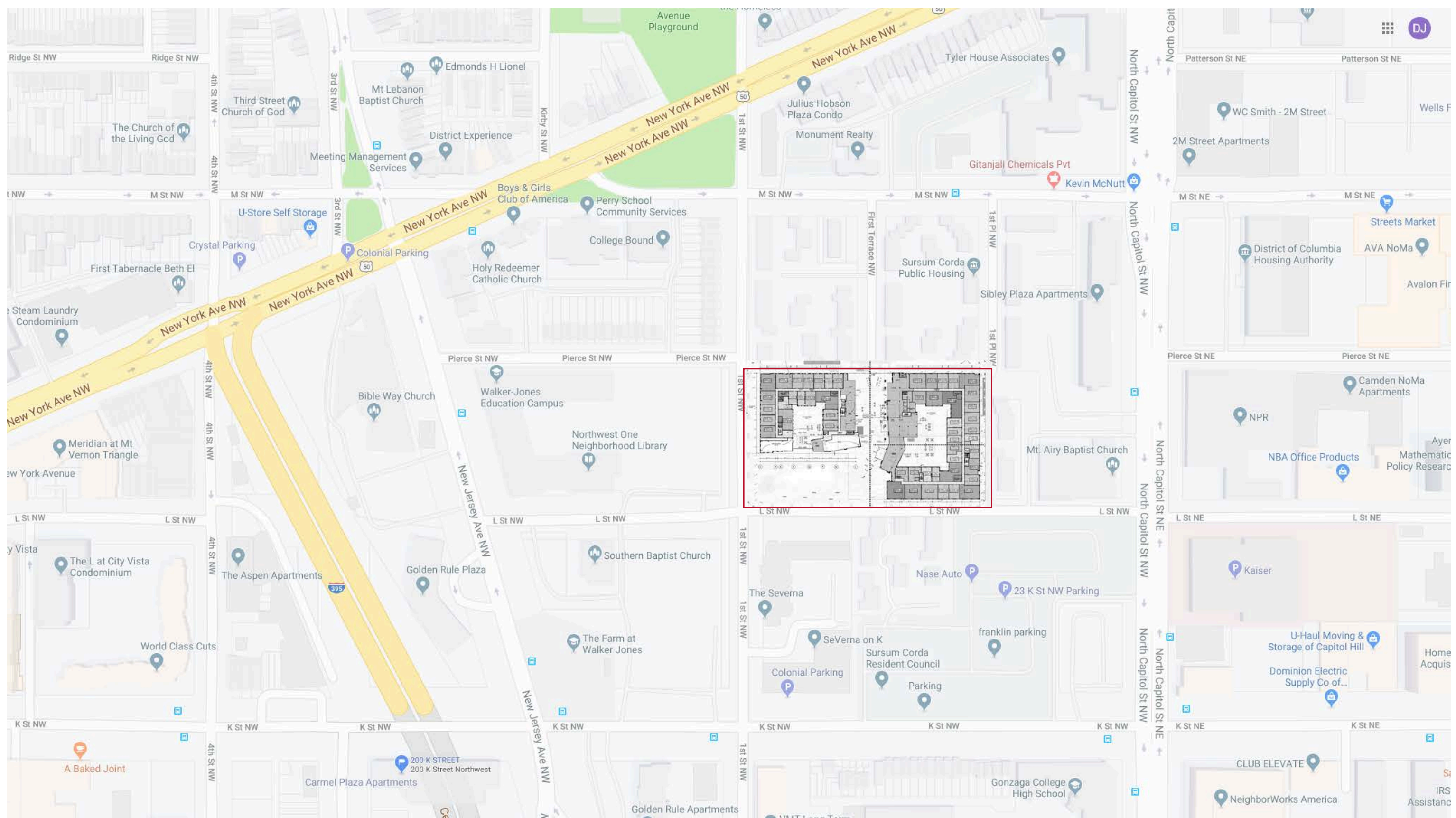
Parker Rodriguez  
101 N. Union St., Ste. 320, Alexandria, VA 22314

**Traffic:**

Gorove / Slade Associates, Inc.  
1140 Connecticut Ave NW, Ste 600, Washington, DC 20036

**YOUNTS  
DESIGN  
INC.**

Submittals for approval by Younts Design prior to fabrication and installation, including but not limited to shop drawings of all graphics with seal of registered engineer and samples of all materials, colors, applications and finishes.  
 Verification of conditions in field prior to submission of shop drawings and production of samples.  
 Coordination with contractors in others trades, including but not limited to electrical, plumbing, mechanical, and landscaping.  
 Structural integrity, electrical function, and connections to power and communications sources as specified by the owner.  
 Final design and engineering of components including all aspects of mounting, fabrication, anchoring and attachment.  
 Field Verification Required | Sign Fabricator is responsible for:  
 © Younts Design Inc.



# SURSUM CORDA

**Y** YOUNTS DESIGN INC.  
 3600 Clipper Mill Rd. Suite 410  
 Baltimore, MD 21211  
**I** 443.825.4100

## COMPREHENSIVE SIGN PLAN

Package Name  
 COMPREHENSIVE SIGN PLAN  
 R1

07/03/19  
 Sheet  
 2

# VICINITY PLAN

Submittals for approval by Younts Design prior to fabrication and installation, including but not limited to shop drawings of all graphics with seal of registered engineer and samples of all materials, colors, applications and finishes.

Verification of contractors in field prior to submission of shop drawings and production of samples.

Coordination with contractors in others trades, including but not limited to: mechanical, electrical, plumbing, fire alarm, and landscaping.

Structural integrity, electrical function, and connections to power and communications sources as specified by the owner.

Final design and engineering of components including all aspects of mounting, fabrication, anchoring and attachment.

Field Verification Required | Sign Fabricator is responsible for:  
© Younts Design Inc.



NOTE  
TRANSFER SLAB

# PROGRAMMING PLAN

Field Verification Required | Sign Fabricator is responsible for:  
 © Younts Design Inc.  
 Final design and engineering of components indicated including all aspects of mounting, fabrication, anchoring and attachment.  
 Structural integrity, electrical function, and connections to power and communications sources as specified by the owner.  
 Coordination with contractors in others trades, including but not limited to civil, structural, and landscaping.  
 Verification of conditions in field prior to submission of shop drawings and production of samples.  
 Submittals for approval by Younts Design prior to fabrication and installation, including but not limited to shop drawings of all graphics with seal of registered engineer and samples of all materials, colors, applications and finishes.

CODE	SIGNETYPE	QTY.	ELECTRICAL/ LIGHTING	DIMENSIONS	MAX. SQUARE FOOTAGE (SF)	MOUNTING	IMAGE REFERENCE
<b>A</b>	Building Mounted Project Identity	6	Internally Illuminated	4' x 40'	160 SF	Building Mounted	
<b>B</b>	Project Blade Identity	3	Internally Illuminated	4' x 30'	120 SF	Building Mounted	
<b>C</b>	Building Mounted Tenant Identity	2	Internally Illuminated	4' x 40'	160 SF	Building Mounted	
<b>D</b>	Tenant Blade Identity	3	Internally Illuminated	3' x 20'	60 SF	Building Mounted	





## SIGNTYPE MATRIX 1 / 3

Field Verification Required | Sign Fabricator is responsible for:  
 © Younts Design Inc.  
 Final design and engineering of components indicated including all aspects of mounting, fabrication, anchoring and attachment.  
 Structural integrity, electrical function, and connections to power and communications sources as specified by the owner.  
 Coordination with contractors in others trades, including but not limited to: civil, structural, mechanical, electrical, plumbing, and landscaping.  
 Verification of conditions in field prior to submission of shop drawings and production of samples.  
 Submittals for approval by Younts Design prior to fabrication and installation, including but not limited to shop drawings of all graphics with seal of registered engineer and samples of all materials, colors, applications and finishes.

CODE	SIGNETYPE	QTY.	ELECTRICAL/LIGHTING	DIMENSIONS	MAX. SQUARE FOOTAGE (SF)	MOUNTING	IMAGE REFERENCE
E	Project Entrance Identity	9	Internally Illuminated	A. CANOPY: 3' high max x 30' wide max (per each street)  B. BUILDING MOUNTED: 2' high max x 20' wide max	40 SF	Canopy or Building Mounted	
E1	Project Entrance Identity on Glass	1	Not Illuminated	5'-0" high max x 10' wide max	50 SF	Glass Mounted	
F	Tenant Identity Signage	7	Internally Illuminated	A. CANOPY: 3'-0" high max x 15' wide max (per each street)  B. BUILDING MOUNTED: 2'-6" high max x 25' wide max	40 SF	Canopy or Building Mounted	
G	Pedestrian Tenant Identity Blade	7	Internally Illuminated	3' high max x 4' wide max	12 SF	Building Mounted	


## SIGNTYPE MATRIX 2 / 3

Field Verification Required | Sign Fabricator is responsible for:  
 © Younts Design Inc.  
 Final design and engineering of components indicated including all aspects of mounting, fabrication, anchoring and attachment.  
 Structural integrity, electrical function, and connections to power and communications sources as specified by the owner.  
 Coordination with contractors in others trades, including but not limited to: civil, structural, mechanical, electrical, plumbing, and landscaping.  
 Verification of conditions in field prior to submission of shop drawings and production of samples.  
 Submittals for approval by Younts Design prior to fabrication and installation, including but not limited to shop drawings of all graphics with seal of registered engineer and samples of all materials, colors, applications and finishes.

CODE	SIGNETYPE	QTY.	ELECTRICAL/ LIGHTING	DIMENSIONS	MAX. SQUARE FOOTAGE (SF)	MOUNTING	IMAGE REFERENCE
H	Tenant Identity Glass Mounted	3	Not Illuminated	1'-6" high max x 10' wide max	15 SF	Glass Mounted	
J	Parking Vehicular Entrance Identity	1	Internally Illuminated	1'-6" x 10'	15 SF	Building or Canopy Mounted	
K	Parking Pedestrian Lobby Identity	1	Internally Illuminated	1'-6" x 6'	9 SF	Building or Canopy Mounted	
L	Loading Identity	1	Not Illuminated	9" x 3'	2.25 SF	Building or Canopy Mounted	

## SIGNTYPE MATRIX 3 / 3

Field Verification Required | Sign Fabricator is responsible for:  
 © Younts Design Inc.  
 Final design and engineering of components indicated including all aspects of mounting, fabrication, anchoring and attachment.  
 Structural integrity, electrical function, and connections to power and communications sources as specified by the owner.  
 Coordination with contractors in others trades, including but not limited to: electrical, plumbing, and landscaping.  
 Verification of conditions in field prior to submission of shop drawings and production of samples.  
 Submittals for approval by Younts Design prior to fabrication and installation, including but not limited to shop drawings of all graphics with seal of registered engineer and samples of all materials, colors, applications and finishes.

CODE	SIGNETYPE	QTY.	ELECTRICAL/LIGHTING	DIMENSIONS	MAX. SQUARE FOOTAGE (SF)	MOUNTING	IMAGE REFERENCE
M	Bicycle Parking Identity Blade	3	Internal	3' x 3'	9 SF	Building Mounted	
N	Freestanding Wayfinding Directional	2	Internally Illuminated	4' x 8'	32 SF	Freestanding	
P	Freestanding Monument	2	Internally Illuminated	5' x 10'	50 SF	Freestanding	
Q	Leasing Banner	4	Not Illuminated	5' x 40'	200 SF	Building Mounted	 Locations TBD. Not shown in Plan or Elevation

## SIGNTYPE MATRIX 3 / 3

Field Verification Required | Sign Fabricator is responsible for:  
 © Younts Design Inc.

Final design and engineering of components indicated including all aspects of mounting, fabrication, anchoring and attachment.

Structural integrity, electrical function, and connections to power and communications sources as specified by the owner.

Coordination with contractors in others trades, including but not limited to: civil, structural, mechanical, electrical, plumbing, and landscaping.

Verification of conditions in field prior to submission of shop drawings and production of samples.

Submittals for approval by Younts Design prior to fabrication and installation, including but not limited to shop drawings of all graphics with seal of registered engineer and samples of all materials, colors, applications and finishes.



# (SW) BUILDING - SOUTH ELEVATION



Submittals for approval by Younts Design prior to fabrication and installation, including but not limited to shop drawings of all graphics with seal of registered engineer and samples of all materials, colors, applications and finishes.

Verification of conditions in field prior to submission of shop drawings and production of samples.

Coordination with contractors in other trades, including but not limited to: structural, mechanical, electrical, plumbing, and landscaping.

Structural integrity, electrical function, and connections to power and communications sources as specified by the owner.

Final design and engineering of components indicated including all aspects of mounting, fabrication, anchoring and attachment.

Field Verification Required | Sign Fabricator is responsible for:  
© Younts Design Inc.



# (SW) BUILDING - NORTH ELEVATION

Submittals for approval by Younts Design prior to fabrication and installation, including but not limited to shop drawings of all materials, colors, applications and finishes.

Verification of conditions in field prior to submission of shop drawings and production of samples.

Coordination with contractors in others trades, including but not limited to structural, mechanical, electrical, plumbing, and landscaping.

Structural integrity, electrical function, and connections to power and communications sources as specified by the owner.

Final design and engineering of components indicated, including all aspects of mounting, fabrication, anchoring and attachment.

Field Verification Required | Sign Fabricator is responsible for:  
© Younts Design Inc.



① WEST ELEVATION  
SCALE: 1/8" = 1'-0"

# (SW) BUILDING - WEST ELEVATION

Field Verification Required | Sign Fabricator is responsible for:  
 © Younts Design Inc.

Final design and engineering of components indicated including all aspects of mounting, fabrication, anchoring and attachment.

Structural integrity, electrical function, and connections to power and communications sources as specified by the owner.

Coordination with contractors in others trades, including but not limited to mechanical, electrical, plumbing, fire, and landscaping.

Verification of conditions in field prior to submission of shop drawings and production of samples.

Submittals for approval by Younts Design prior to fabrication and installation, including but not limited to shop drawings of all graphics with seal of registered engineer and samples of all materials, colors, applications and finishes.



1 EAST ELEVATION  
SCALE: 1/8" = 1'-0"

# (SW) BUILDING - EAST ELEVATION

Field Verification Required | Sign Fabricator is responsible for:  
 © Younts Design Inc.

Final design and engineering of components indicated including all aspects of mounting, fabrication, anchoring and attachment.

Structural integrity, electrical function, and connections to power and communications sources as specified by the owner.

Coordination with contractors in others trades, including but not limited to: structural, mechanical, electrical, plumbing, and landscaping.

Verification of conditions in field prior to submission of shop drawings and production of samples.

Submittals for approval by Younts Design prior to fabrication and installation, including but not limited to shop drawings of all graphics with seal of registered engineer and samples of all materials, colors, applications and finishes.



1 SOUTH ELEVATION  
 SCALE: 1/8" = 1'-0"

(SE) BUILDING - SOUTH ELEVATION

Field Verification Required | Sign Fabricator is responsible for:  
 © Younts Design Inc.

Final design and engineering of components indicated including all aspects of mounting, fabrication, anchoring and attachment.

Structural integrity, electrical function, and connections to power and communications sources as specified by the owner.

Coordination with contractors in others trades, including but not limited to: mechanical, electrical, plumbing, fire, and landscaping.

Verification of conditions in field prior to submission of shop drawings and production of samples.

Submittals for approval by Younts Design prior to fabrication and installation, including but not limited to shop drawings of all graphics with seal of registered engineer and samples of all materials, colors, applications and finishes.



(SE) BUILDING - EAST ELEVATION

Submittals for approval by Younts Design prior to fabrication and installation, including but not limited to shop drawings of all graphics with seal of registered engineer and samples of all materials, colors, applications and finishes.

Verification of conditions in field prior to submission of shop drawings and production of samples.

Coordination with contractors in others trades, including but not limited to: mechanical, electrical, plumbing, fire, structural, and landscaping.

Structural integrity, electrical function, and connections to power and communications sources as specified by the owner.

Final design and engineering of components indicated including all aspects of mounting, fabrication, anchoring and attachment.

Field Verification Required | Sign Fabricator is responsible for:  
© Younts Design Inc.



① WEST ELEVATION  
SCALE: 1/8" = 1'-0"

# (SE) BUILDING - WEST ELEVATION

Submittals for approval by Younts Design prior to fabrication and installation, including but not limited to shop drawings of all graphics with seal of registered engineer and samples of all materials, colors, applications and finishes.

Verification of conditions in field prior to submission of shop drawings and production of samples.

Coordination with contractors in others trades, including but not limited to: structural, mechanical, electrical, plumbing, and landscaping.

Structural integrity, electrical function, and connections to power and communications sources as specified by the owner.

Final design and engineering of components indicated including all aspects of mounting, fabrication, anchoring and attachment.

Field Verification Required | Sign Fabricator is responsible for:

© Younts Design Inc.



# (SE) BUILDING - NORTH ELEVATION