

Building 2A/2B
 6-11 Stories
 425,225 gsf
 Approx. 348 Units

Building 2C/2D
 6-10 Stories
 439,460 gsf
 Approx. 362 Units

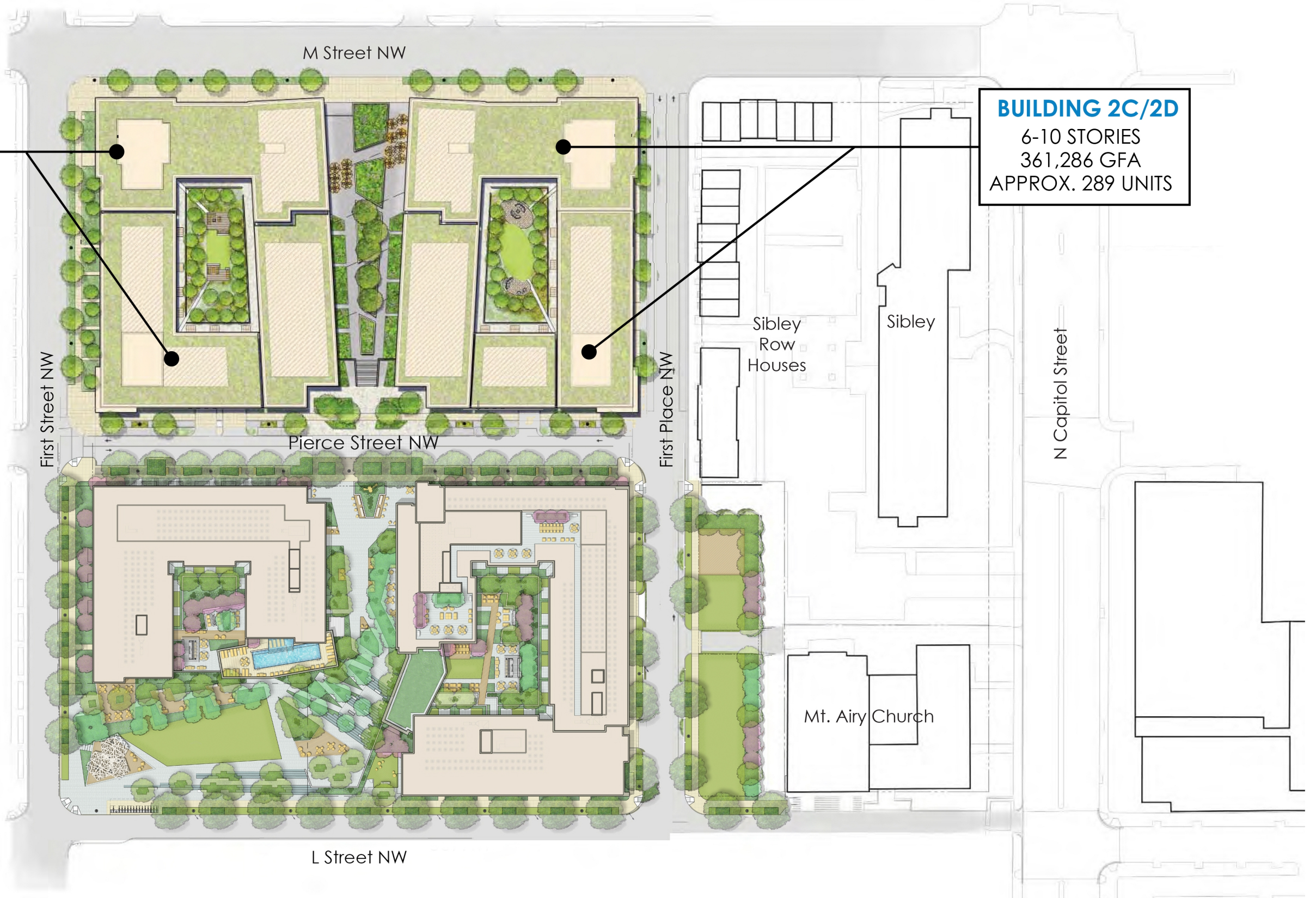


*REFER TO NOTES ON LANDSCAPE DRAWINGS REGARDING THE PUBLIC PARK.



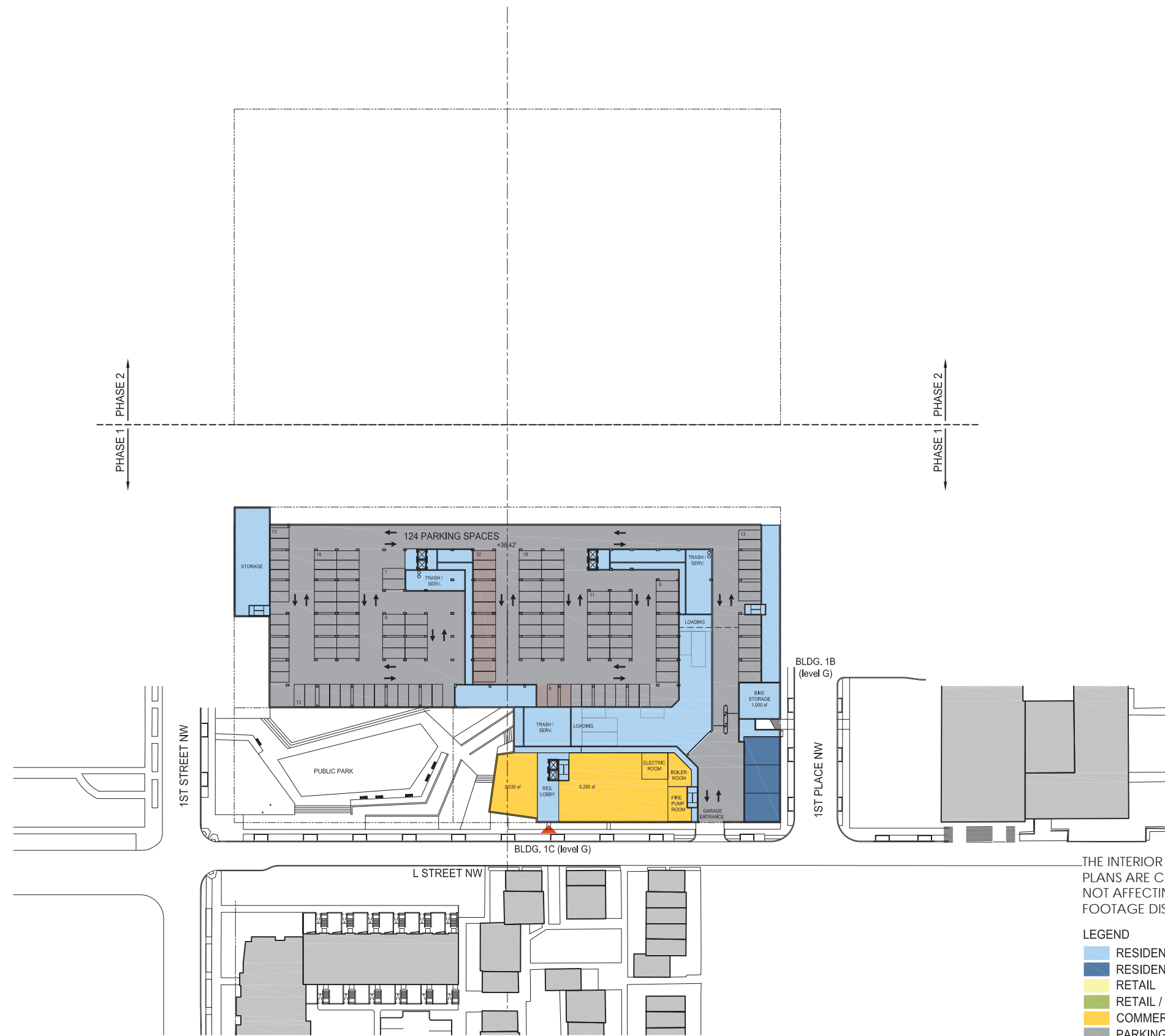
BUILDING 2A/2B
 6-11 STORIES
 349,627 GFA
 APPROX. 280 UNITS

BUILDING 2C/2D
 6-10 STORIES
 361,286 GFA
 APPROX. 289 UNITS



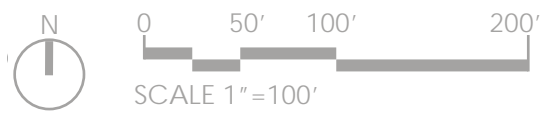
*REFER TO NOTES ON LANDSCAPE DRAWINGS REGARDING THE PUBLIC PARK.

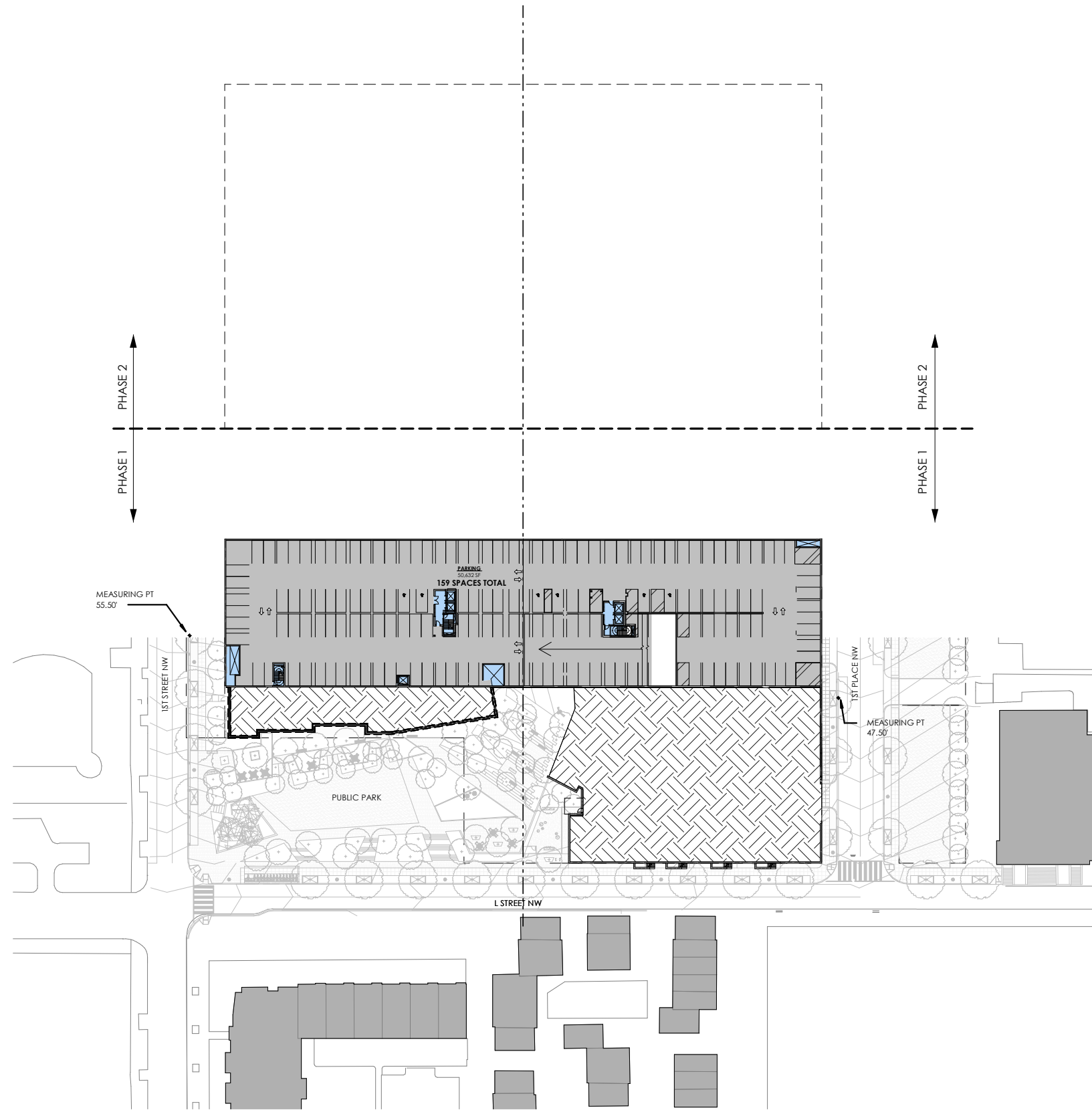




THE INTERIOR LAYOUTS AS SHOWN ON THE BUILDING PLANS ARE CONCEPTUAL. CHANGES TO THE LAYOUTS, NOT AFFECTING THE EXTERIOR ENVELOPE OR THE SQUARE FOOTAGE DISTRIBUTION MAY OCCUR.

- LEGEND
- RESIDENTIAL & COMMON / SERVICE SPACE
 - RESIDENTIAL 2-STORY WALK UPS
 - RETAIL
 - RETAIL / PROFESSIONAL OFFICE
 - COMMERCIAL / COMMUNITY / AMENITY
 - PARKING - RESIDENTIAL
 - PARKING - RETAIL / PROFESSIONAL OFFICE
 - PARKING - COMMERCIAL / COMMUNITY / AMENITY
 - MAIN ENTRANCE TO BUILDING



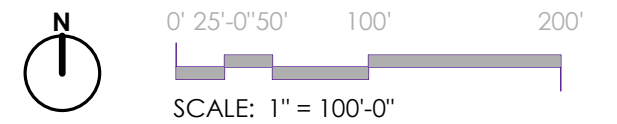


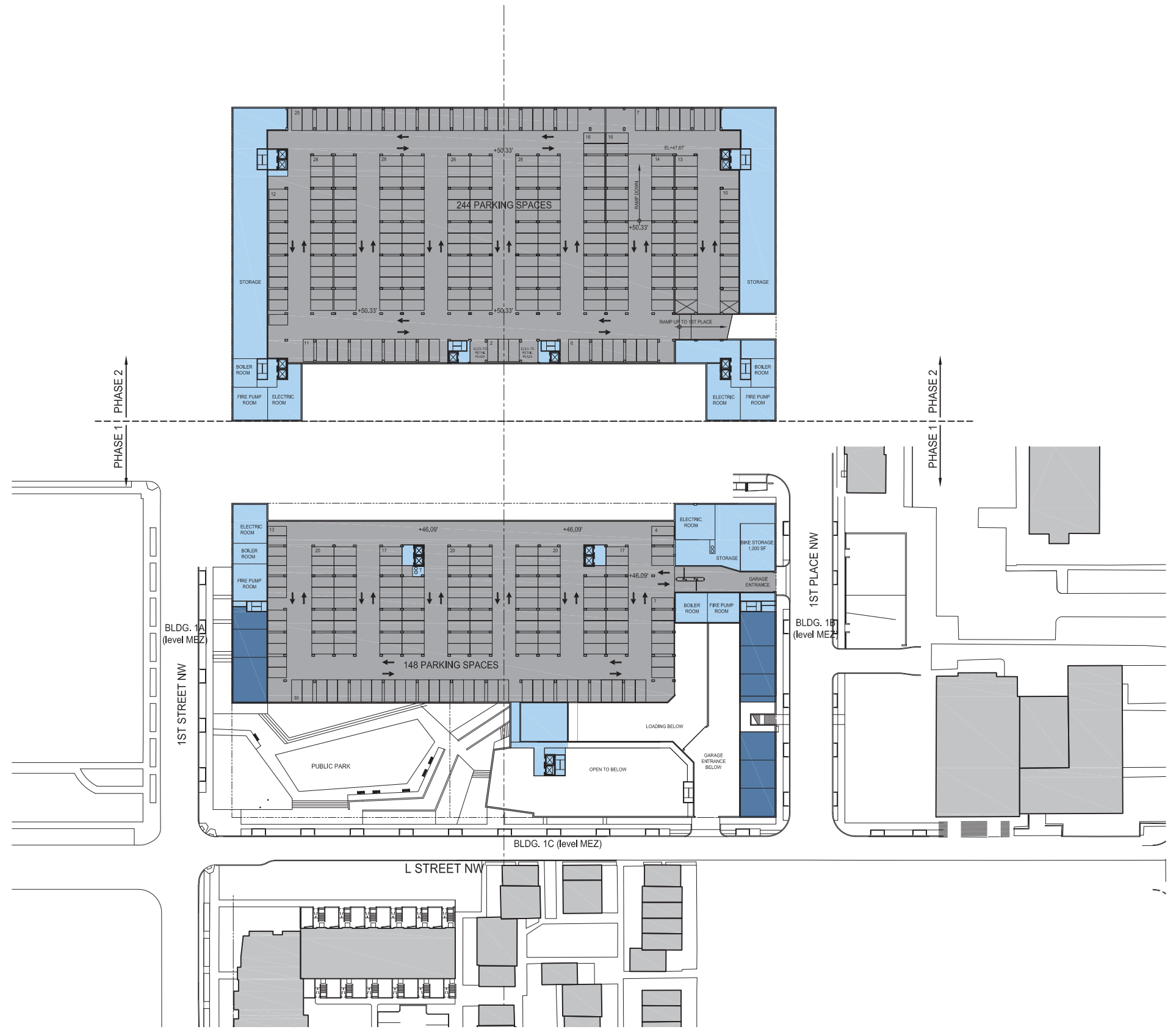
THE INTERIOR LAYOUTS AS SHOWN ON THE BUILDING PLANS ARE CONCEPTUAL. CHANGES TO THE LAYOUTS, NOT AFFECTING THE EXTERIOR ENVELOPE OR THE SQUARE FOOTAGE DISTRIBUTION MAY OCCUR.

LEGEND

- RESIDENTIAL & COMMON / SERVICE SPACE
- RESIDENTIAL 2-STORY WALK UPS
- RETAIL
- RETAIL / PROFESSIONAL OFFICE
- COMMERCIAL / COMMUNITY / AMENITY
- PARKING - RESIDENTIAL
- PARKING - RETAIL / PROFESSIONAL OFFICE
- PARKING - COMMERCIAL / COMMUNITY / AMENITY
- MAIN ENTRANCE TO BUILDING

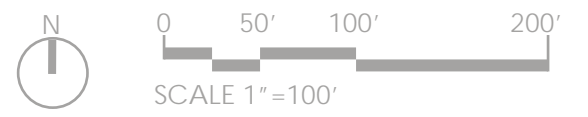
NOTE: THE INTERIOR LAYOUTS SHOWN ON THE BUILDING PLANS ARE SCHEMATIC. CHANGES TO THE LAYOUTS, NOT AFFECTING THE EXTERIOR ENVELOPE OR THE SQUARE FOOTAGE DISTRIBUTION MAY OCCUR.

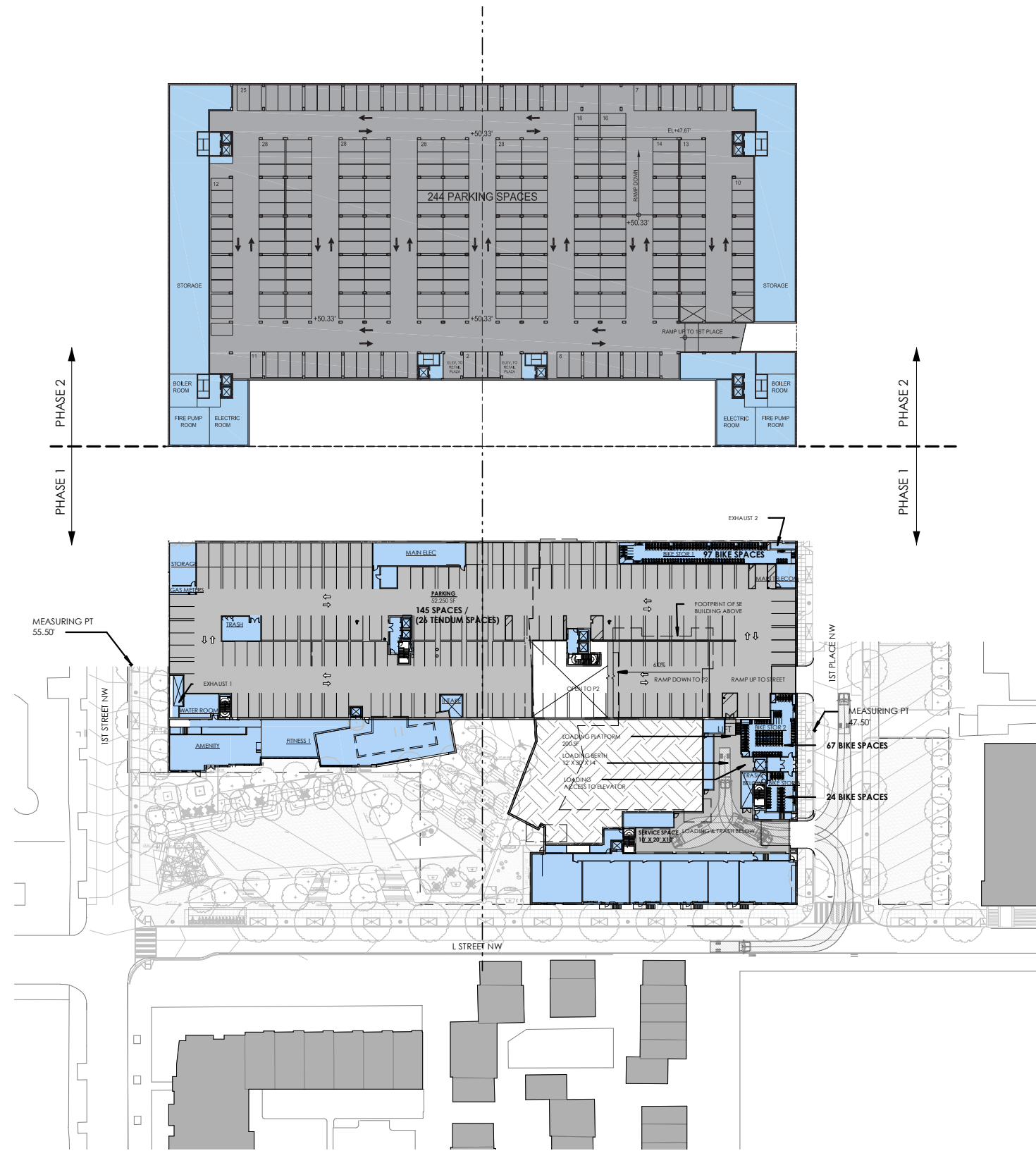




THE INTERIOR LAYOUTS AS SHOWN ON THE BUILDING PLANS ARE CONCEPTUAL. CHANGES TO THE LAYOUTS, NOT AFFECTING THE EXTERIOR ENVELOPE OR THE SQUARE FOOTAGE DISTRIBUTION MAY OCCUR.

- LEGEND
- RESIDENTIAL & COMMON / SERVICE SPACE
 - RESIDENTIAL 2-STORY WALK UPS
 - RETAIL
 - RETAIL / PROFESSIONAL OFFICE
 - COMMERCIAL / COMMUNITY / AMENITY
 - PARKING - RESIDENTIAL
 - PARKING - RETAIL / PROFESSIONAL OFFICE
 - PARKING - COMMERCIAL / COMMUNITY / AMENITY
 - MAIN ENTRANCE TO BUILDING





THE INTERIOR LAYOUTS AS SHOWN ON THE BUILDING PLANS ARE CONCEPTUAL. CHANGES TO THE LAYOUTS, NOT AFFECTING THE EXTERIOR ENVELOPE OR THE SQUARE FOOTAGE DISTRIBUTION MAY OCCUR.

LEGEND

- RESIDENTIAL & COMMON / SERVICE SPACE
- RESIDENTIAL 2-STORY WALK UPS
- RETAIL
- RETAIL / PROFESSIONAL OFFICE
- COMMERCIAL / COMMUNITY / AMENITY
- PARKING - RESIDENTIAL
- PARKING - RETAIL / PROFESSIONAL OFFICE
- PARKING - COMMERCIAL / COMMUNITY / AMENITY
- MAIN ENTRANCE TO BUILDING

NOTE: THE INTERIOR LAYOUTS SHOWN ON THE BUILDING PLANS ARE SCHEMATIC. CHANGES TO THE LAYOUTS, NOT AFFECTING THE EXTERIOR ENVELOPE OR THE SQUARE FOOTAGE DISTRIBUTION MAY OCCUR.

UNIT AREAS: RENTAL UNIT AREAS ARE CALCULATED FROM EXTERIOR SIDE OF EXTERIOR WALLS, CENTERLINE OF DEMISING WALLS, AND CORRIDOR SIDE OF CORRIDOR WALLS.

