



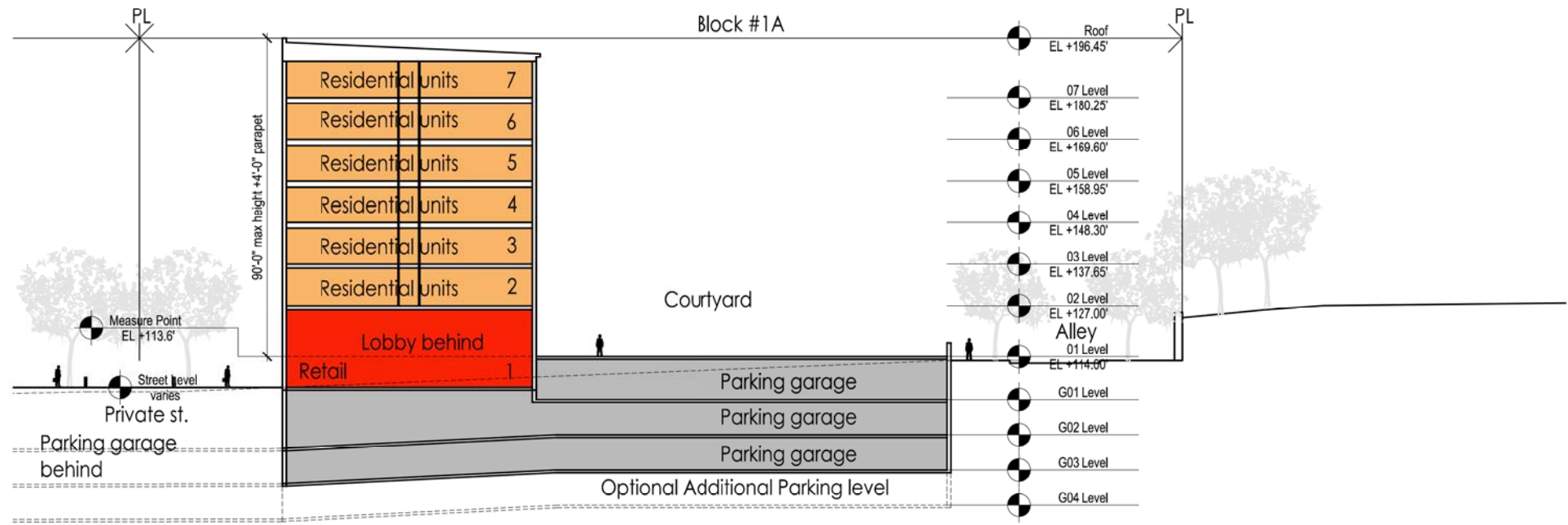
- MATERIALS**
1. Brick 1
 2. Brick 2
 3. Brick 3
 4. Metal Balcony
 5. Metal Channel
 6. Metal Panel 1
 7. Metal Panel 2
 8. Metal Railing
 9. Metal Window 1
 10. Metal Window 2
 11. Precast Stone 1
 12. Precast Stone 2
 13. Precast Stone 3
 14. Stone
- See Sheets 1.501 to 1.506 for material locations
- PH max. EL +199.00'
 - Roof EL +185.00'
 - 07 Level EL +169.10'
 - 06 Level EL +158.45'
 - 05 Level EL +147.80'
 - 04 Level EL +137.15'
 - 03 Level EL +126.50'
 - 02 Level EL +113.50'
 - Measuring EL +95.61'
 - 01 Level EL +95.50'



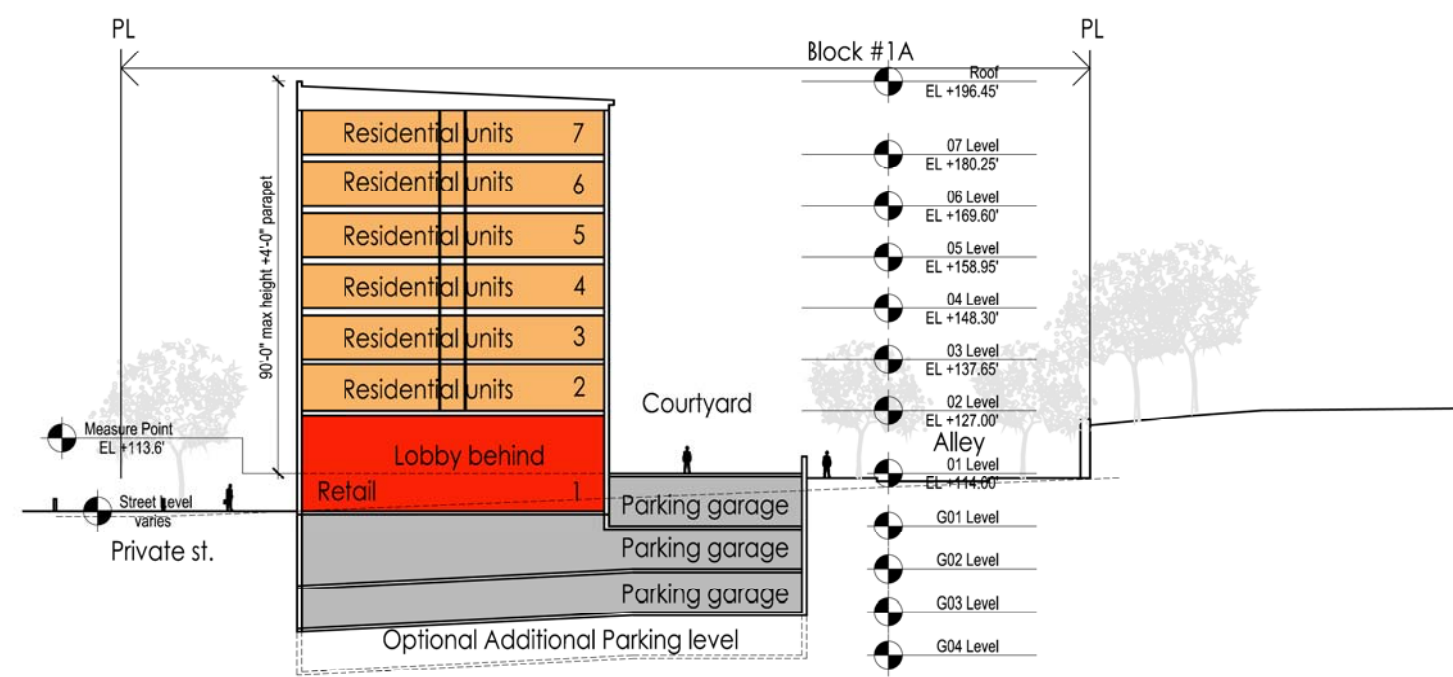
KEY PLAN



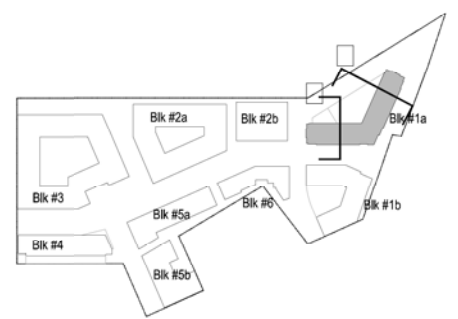
SIGNAGE BY OTHERS
POSSIBLE SIGNAGE LOCATIONS
POSSIBLE SIGNAGE LOCATIONS



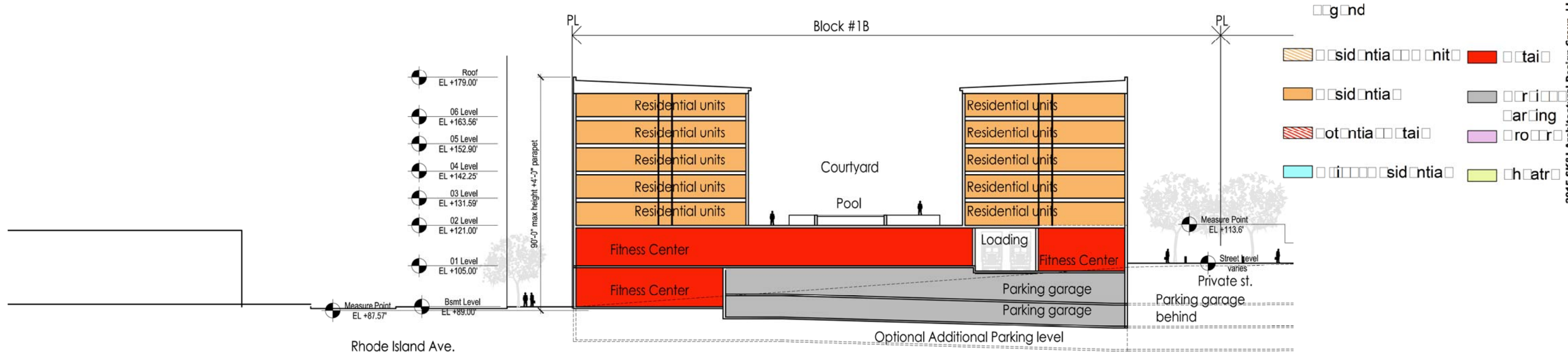
Section 1



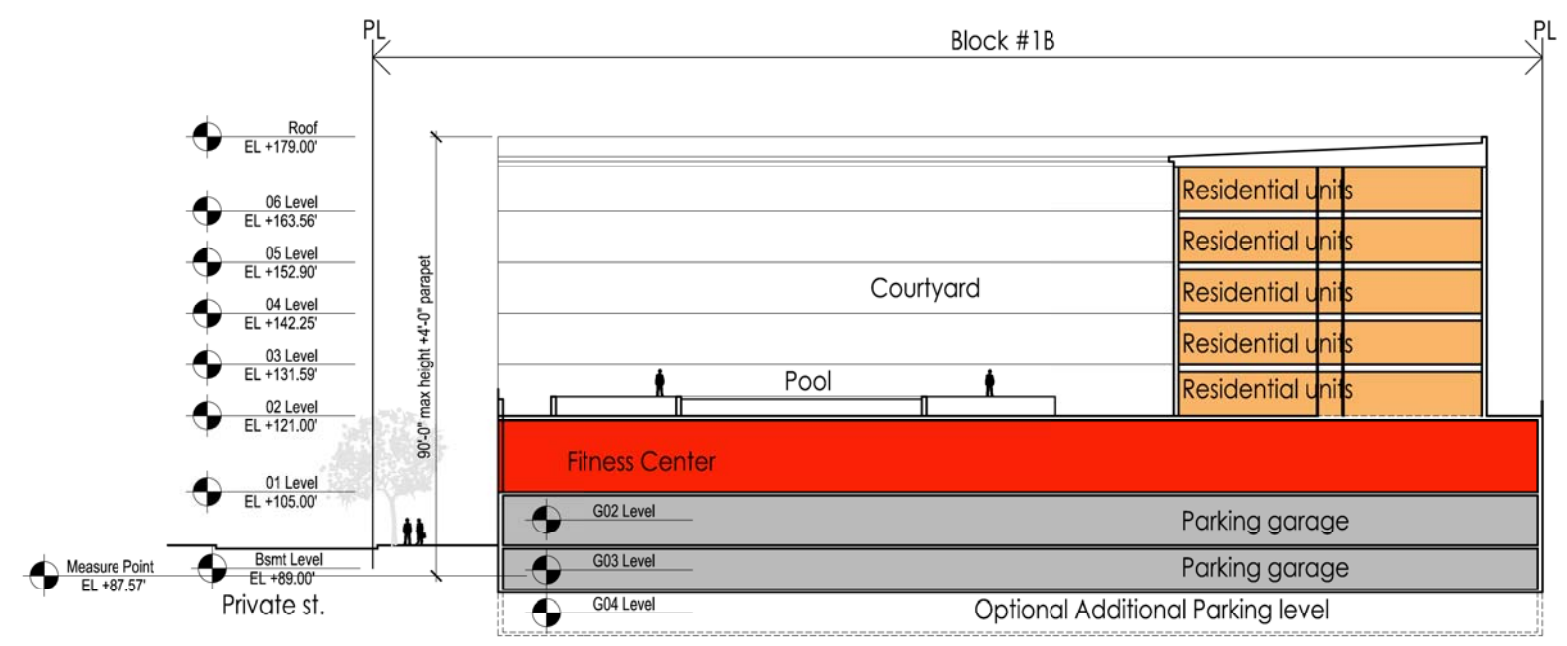
Section 2



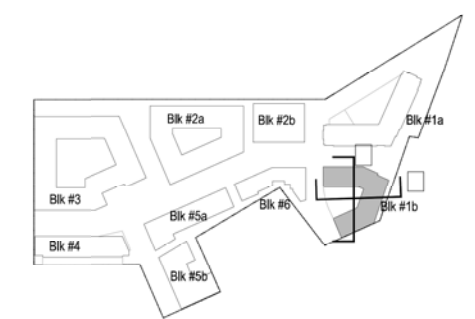
KEY PLAN



Section 1



Section 2



KEY PLAN



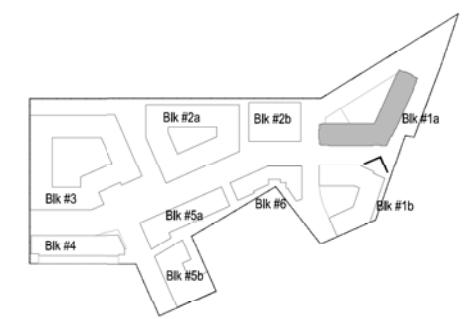
CORRUGATED METAL PANEL

COMPOSITE METAL PANEL

PRECAST STONE #1
BRICK #1

CORRUGATED METAL PANEL

METAL BALCONY



KEY PLAN



MRP | REALTY

680 Rhode Island Ave. | Washington, DC

February 26, 2016 | 1.501

SK+I
ARCHITECTURE

□□iding □□ □□a□ad □□D□tai □



CORRUGATED METAL PANEL

COMPOSITE METAL PANEL

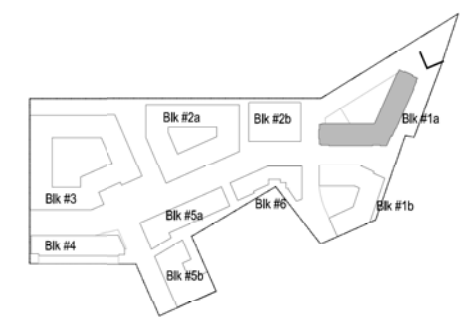
PRECAST STONE #1

BRICK #1

CORRUGATED METAL PANEL

PRECAST STONE #1

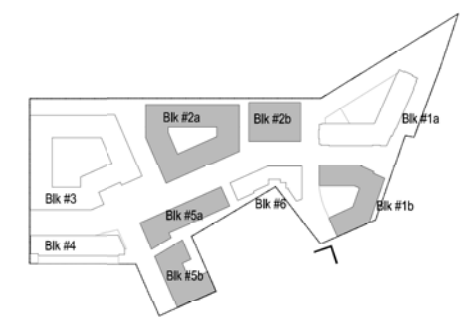
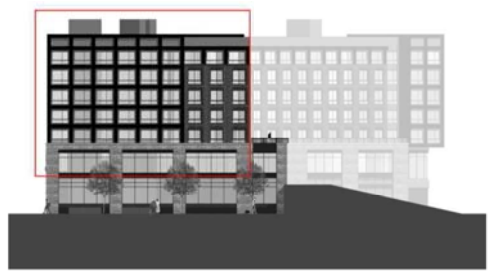
METAL BALCONY



KEY PLAN



- TEXTURED METAL PANEL
- COMPOSITE METAL PANEL
- PRECAST #2
- BRICK #2
- BRICK #1
- COMPOSITE METAL PANEL
- METAL RAILING
- PRECAST #1
- STONE
- METAL CHANNEL



KEY PLAN

MRP | REALTY

680 Rhode Island Ave. | Washington, DC

February 26, 2016 | 1.503



□□iding □□ □□a□ad □□D□tai □



- TEXTURED (CORRUGATED) METAL PANEL
- COMPOSITE METAL PANEL
- COMPOSITE METAL PANEL
- BRICK #2
- METAL RAILING
- BRICK #2
- BRICK #1
- BRICK #2
- STONE
- METAL CHANNEL



KEY PLAN

MRP | REALTY

680 Rhode Island Ave. | Washington, DC

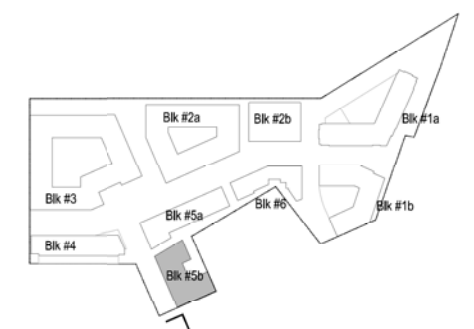
February 26, 2016 | 1.504



□□iding □□ □□a□ad □□D□tai □



- COMPOSITE METAL PANEL
- CORRUGATED METAL PANEL
- METAL CHANNEL
- PRECAST STONE #3
- BRICK #3
- METAL CHANNEL
- PRECAST STONE #3
- BRICK #3



KEY PLAN

MRP | REALTY

680 Rhode Island Ave. | Washington, DC

February 26, 2016 | 1.505



□□iding □□ □□a□ad □□D□tai□