

REQUIRED GAR: 0.250
GAR SCORE: 0.351

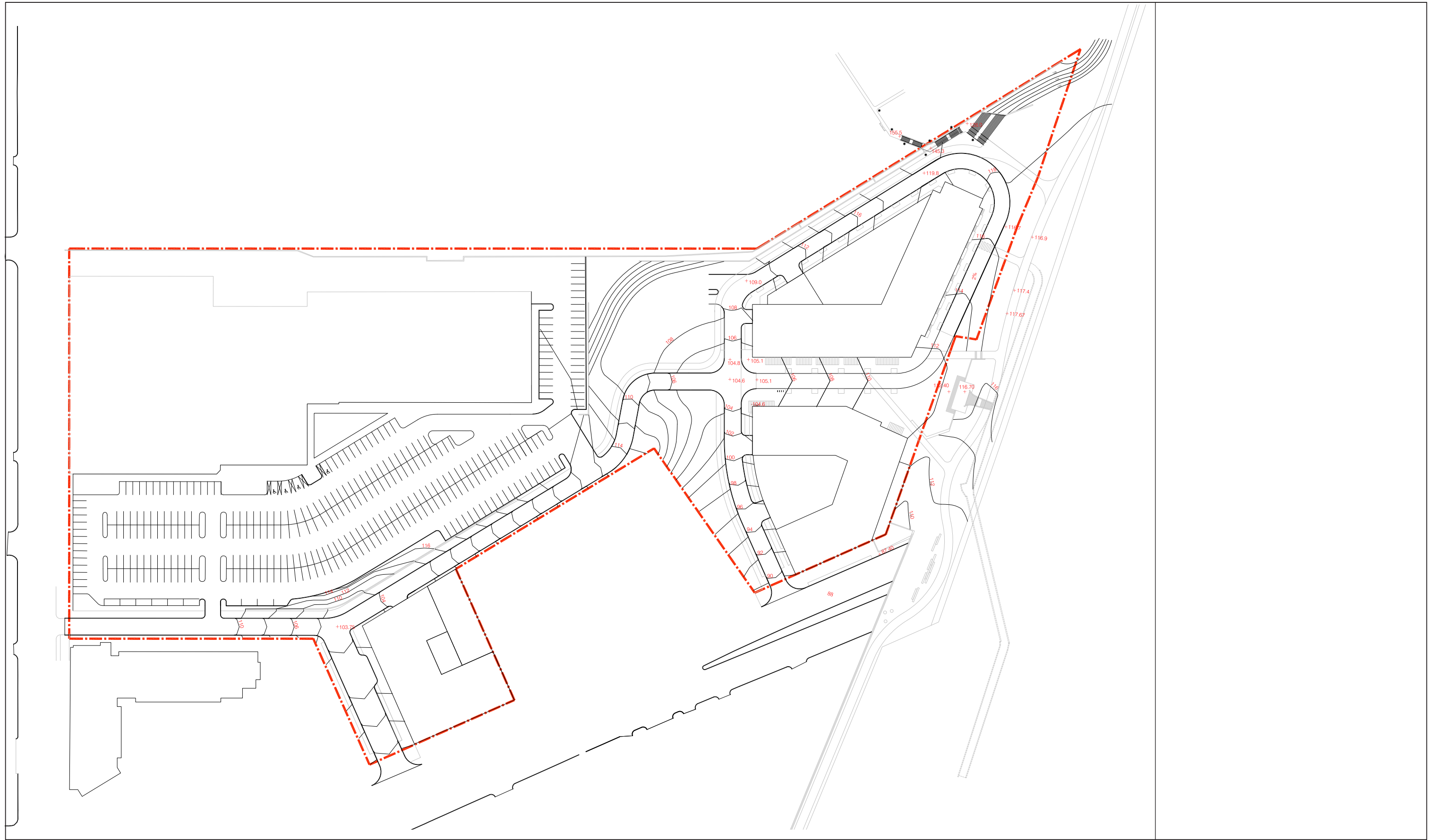
| | | Green Area Ratio Scoresheet | | | |
|--|--|--|--------|------------------------------|-----------------|
| Address 680 Rhode Island Avenue NW | | Ward | Lot | Square | Zoning District |
| Other / BZA Order | | enter sq ft of lot | | multiplier | |
| Lot size (enter this value first) * | | 481,195 | | SCORE | 0.351 |
| Landscape Elements | | Square Feet | Factor | Total | |
| A Landscaped areas (select one of the following for each area) | | | | | |
| 1 Landscaped areas with a soil depth of less than 24" | | enter sq ft | 0.3 | - | |
| 2 Landscaped areas with a soil depth of 24" or greater | | 54,760 | 0.6 | 32,856.0 | |
| 3 Bioretention facilities | | enter sq ft | 0.4 | - | |
| B Plantings (credit for plants in landscaped areas from Section A) | | | | | |
| 1 Groundcovers, or other plants less than 2' tall at maturity | | 41,070 | 0.2 | 8,214 | |
| 2 Plants, not including grasses, 2' or taller at maturity - calculated at 9 sq ft per plant (typically planted no closer than 18" on center) | | enter number of plants 1,521 | 13689 | 0.3 | 4,107 |
| 3 Tree canopy for all new trees 2.5" to 6" in diameter or equivalent - calculated at 50 sq ft per tree | | enter number of trees 187 | 9350 | 0.5 | 4,675.0 |
| 4 Tree canopy for new trees 6" diameter or larger or equivalent - calculated at 250 sq ft per tree | | enter number of trees 0 | 0 | 0.6 | - |
| 5 Tree canopy for preservation of existing tree 6" to 12" in diameter or larger or equivalent - calculated at 250 sq ft per tree | | enter number of trees 0 | 0 | 0.7 | - |
| 6 Tree canopy for preservation of existing tree 12" to 18" in diameter or larger or equivalent - calculated at 600 sq ft per tree | | enter number of trees 0 | 0 | 0.7 | - |
| 7 Tree canopy for preservation of all existing trees 18" to 24" in diameter or equivalent - calculated at 1300 sq ft per tree | | enter number of trees 0 | 0 | 0.7 | - |
| 8 Tree canopy for preservation of all existing trees 24" in diameter or larger or equivalent - calculated at 2000 sq ft per tree | | enter number of trees 0 | 0 | 0.8 | - |
| 9 Vegetated wall, plantings on a vertical surface | | enter sq ft 0 | 0.6 | - | |
| C Vegetated or "green" roofs | | | | | |
| 1 Over at least 2" and less than 8" of growth medium | | enter sq ft 140,000 | 0.6 | 84,000.0 | |
| 2 Over at least 8" of growth medium | | enter sq ft 28,000 | 0.8 | 22,400.0 | |
| D Permeable Paving*** | | | | | |
| 1 Permeable paving over at least 6" and less than 24" of soil or gravel | | enter sq ft 23,259 | 0.4 | 9,303.6 | |
| 2 Permeable paving over at least 24" of soil or gravel | | enter sq ft 0 | 0.5 | - | |
| E Other | | | | | |
| 1 Enhanced tree growth systems*** | | enter sq ft | 0.4 | - | |
| 2 Renewable energy generation | | enter sq ft 0 | 0.5 | - | |
| 3 Approved water features | | enter sq ft 0 | 0.2 | - | |
| H Bonuses | | sub-total of sq ft = 310,128 | | | |
| 1 Native plant species | | enter sq ft 32,812 | 0.1 | 3,281.2 | |
| 2 Landscaping in food cultivation | | enter sq ft 0 | 0.1 | - | |
| 3 Harvested stormwater irrigation | | enter sq ft 0 | 0.1 | - | |
| | | | | Green Area Ratio numerator = | 168,837 |

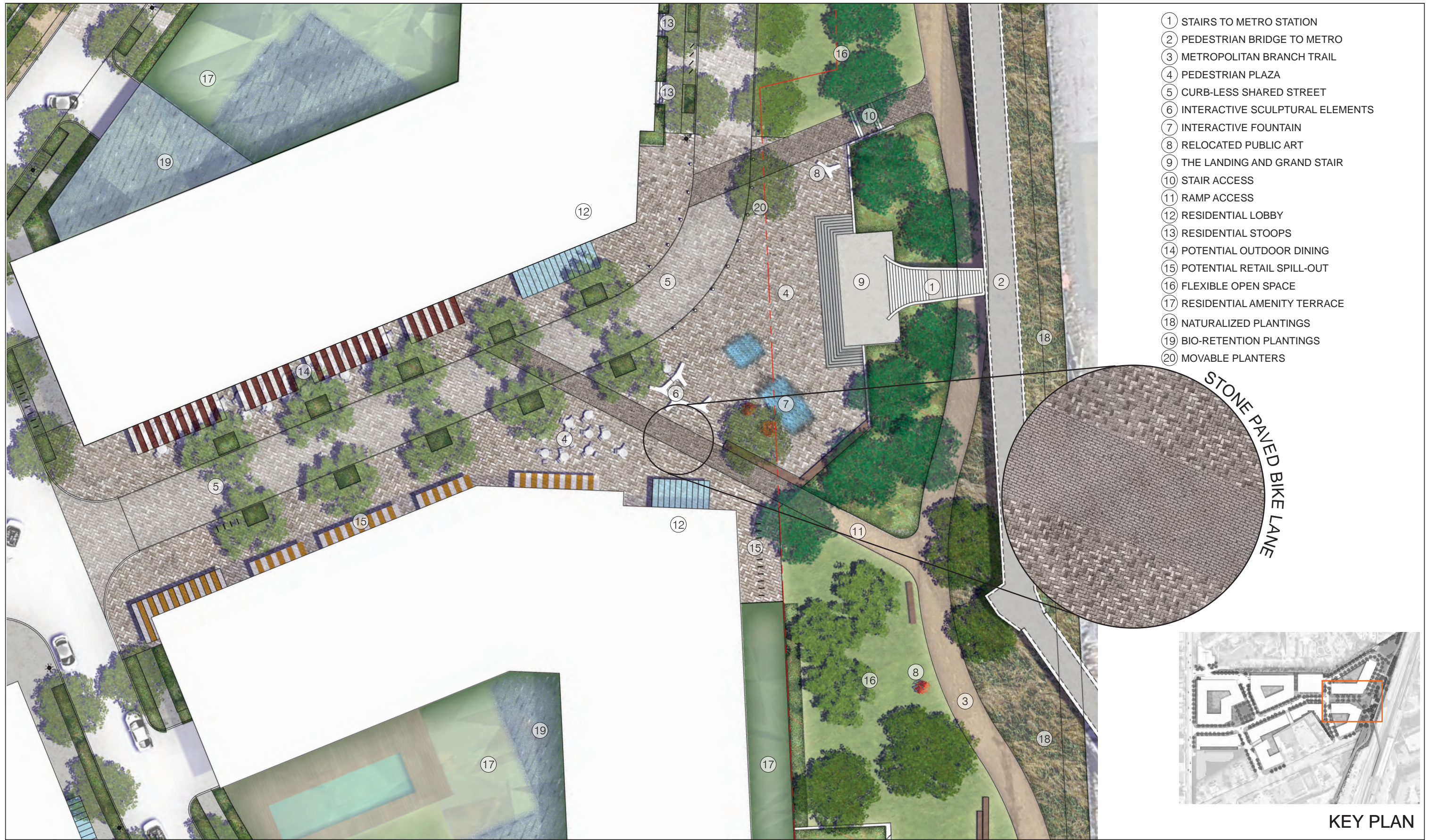
*** Permeable paving and structural soil together may not qualify for more than one third of the Green Area Ratio score.



- ① RHODE ISLAND AVE. METRO STATION
- ② EXISTING PEDESTRIAN BRIDGE TO METRO
- ③ METROPOLITAN BRANCH TRAIL
- ④ PEDESTRIAN PLAZA
- ⑤ CYCLE LANES
- ⑥ RESIDENTIAL AMENITY TERRACE
- ⑦ FLEXIBLE OPEN SPACE
- ⑧ INTERIM CONDITION ARCHITECTURAL INSTALLATION (SEE SHEET L2.08)
- ⑨ INTERIM CONDITION ARCHITECTURAL SCREEN
- ⑩ INTERIM CONDITION CYCLE LANES
- ⑪ ACCESS STAIR (SUBJECT TO APPROVAL BY ADJACENT PROPERTY OWNER)
- ⑫ INTERIM CONDITION RETAINING WALL
- ⑬ BRYANT STREET PARK
- ⑭ NATURALIZED PLANTINGS
- ⑮ BIO-RETENTION PLANTINGS
- ⑯ PYLON SIGN
(THE EXISTING PYLON SIGNS ON RHODE ISLAND AVENUE AND 4TH STREET WILL BE REMOVED, UPGRADED AND REPLACED DURING CONSTRUCTION OF PHASE I)
- ⑰ LANDSCAPE BUFFER TO BE DEVELOPED WITH ADJACENT PROPERTY OWNER'S APPROVAL

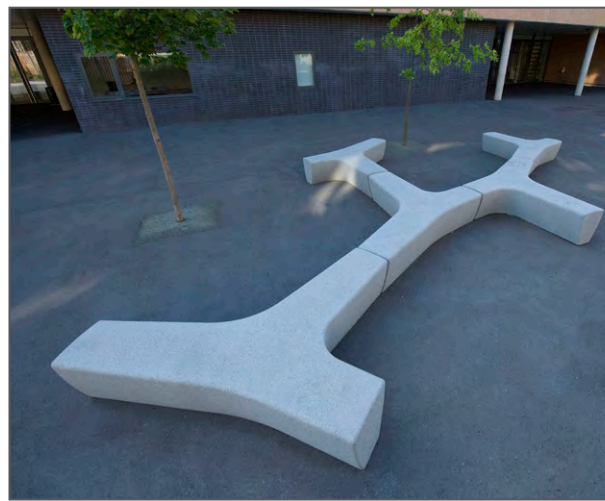
Note: Plan for illustrative purposes only and does not reflect the exact design to be proposed







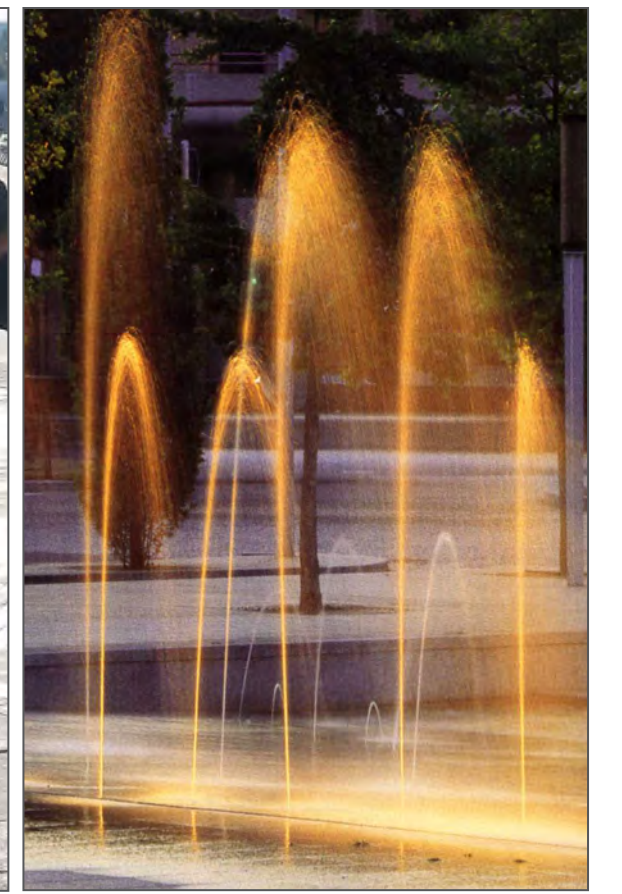
Plaza Unit Pavers



Plaza Sculptural Seating Elements



Plaza Interactive Fountain



Note: Images identified here are not exact representations of proposed site elements. These images are shown to provide general character of site features.



Off-street Bike Lane



Plaza / Shared Street



Outdoor Dining



Streetscape/Urban Bench



Streetscape/Urban Trash Receptacle



Bollard



Park Bench



Park Trash Receptacle



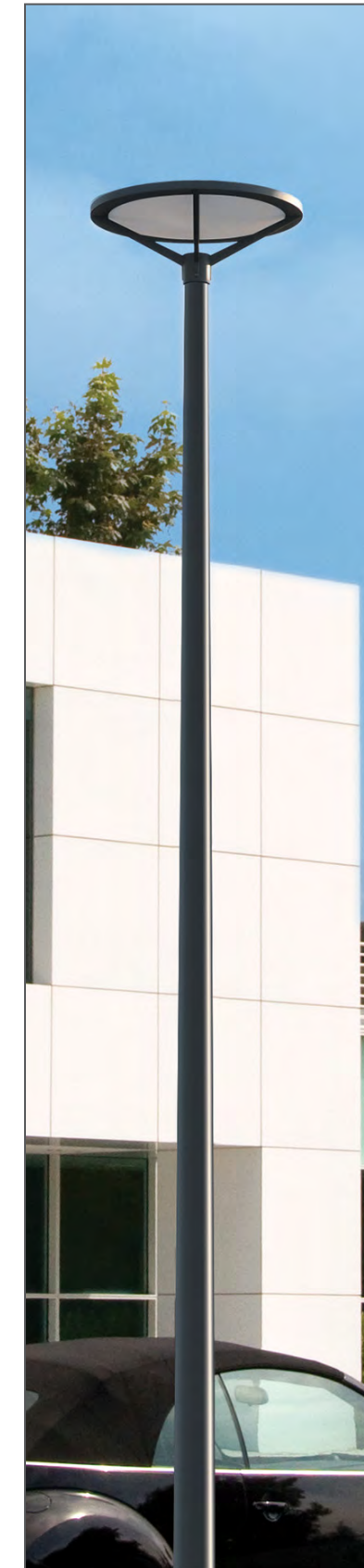
Bike Racks



Planters



Tree Grate



Street Light Option



Street Light Option

Note: Site Furnishings identified here are not exact representations of proposed site elements. These images are shown to provide general character of site features.

STREET TREES



Acer rubra - Red Maple



Quercus phellos - Willow Oak



Liquidambar styraciflua - Sweetgum



Gleditsia triacanthos - Honey Locust

NATIVE GARDEN PLANTING



Service Berry



Oak Leaf Hydrangea



Dwarf Fothergilla



Coriopsis Moonbeam



Hardy Geranium



Autumn Bride Heuchera

Note: Plantings identified here are not exact representations of proposed site plantings. These images are shown to provide general character of site plantings.

NATIVE AND NATURALIZED PLANTINGS



Shenandoah Switch Grass



Winterberry Holly



Schizachyrium Blue Stem



Goldenrod

BIO-RETENTION PLANTING

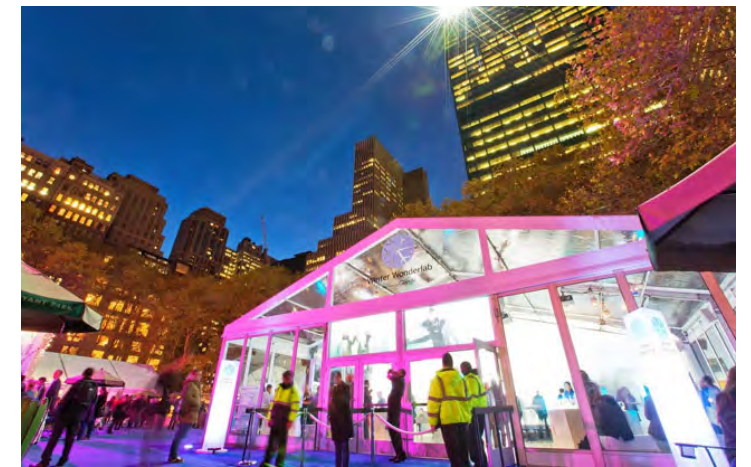
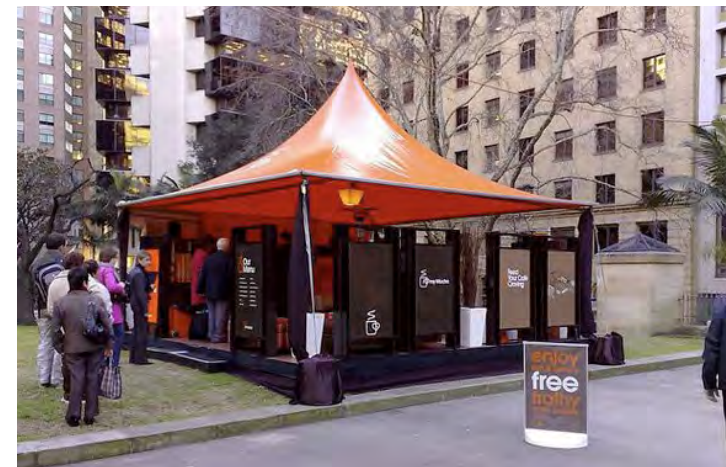


Joe-Pye Weed



Black-Eyed Susans and Purple Cone Flower

Note: Plantings identified here are not exact representations of proposed site plantings. These images are shown to provide general character of site plantings.



Note: Images identified here are not exact representations of proposed site elements. These images are shown to provide general character of site features.