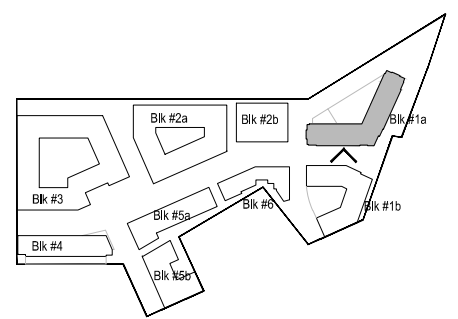




**MATERIALS**

- 1. Brick 1
  - 2. Brick 2
  - 3. Brick 3
  - 4. Metal Balcony
  - 5. Metal Channel
  - 6. Metal Panel 1
  - 7. Metal Panel 2
  - 8. Metal Railing
  - 9. Metal Window 1
  - 10. Metal Window 2
  - 11. Precast Stone 1
  - 12. Precast Stone 2
  - 13. Precast Stone 3
  - 14. Stone
- See Sheets 1.501 to 1.506 for material locations

- PH max.  
EL +215.60'
- Roof  
EL +203.60'
- 07 Level  
EL +189.60'
- 06 Level  
EL +178.94'
- 05 Level  
EL +168.28'
- 04 Level  
EL +157.63'
- 03 Level  
EL +146.97'
- 02 Level  
EL +136.31'
- 01 Level  
EL +114.00'
- Measuring Point  
EL +113.60'



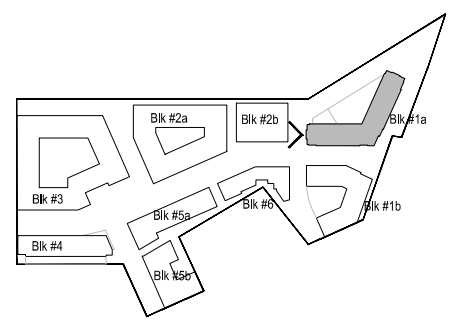
**KEY PLAN**



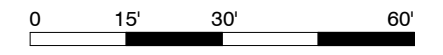
●	PH max.	EL +215.60'
●	Roof	EL +203.60'
●	07 Level	EL +189.60'
●	06 Level	EL +178.94'
●	05 Level	EL +168.28'
●	04 Level	EL +157.63'
●	03 Level	EL +146.97'
●	02 Level	EL +136.31'
●	01 Level	EL +114.00'
●	Measuring Point	EL +113.60'

**MATERIALS**

- 1. Brick 1
  - 2. Brick 2
  - 3. Brick 3
  - 4. Metal Balcony
  - 5. Metal Channel
  - 6. Metal Panel 1
  - 7. Metal Panel 2
  - 8. Metal Railing
  - 9. Metal Window 1
  - 10. Metal Window 2
  - 11. Precast Stone 1
  - 12. Precast Stone 2
  - 13. Precast Stone 3
  - 14. Stone
- See Sheets 1.501 to 1.506 for material locations



**KEY PLAN**

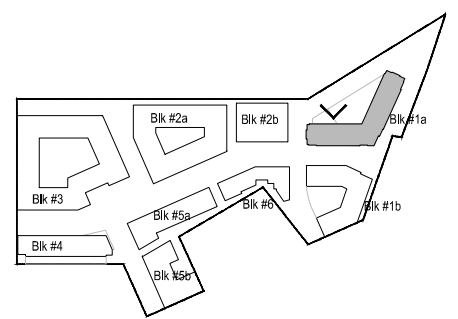
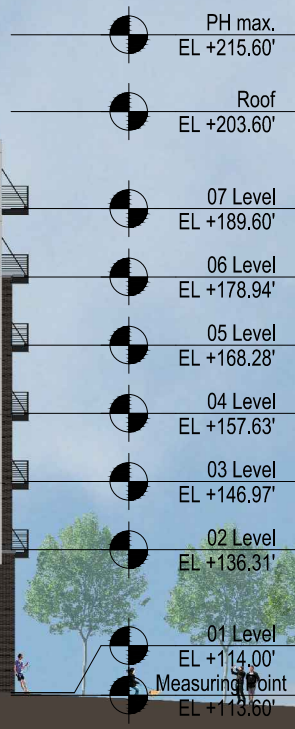






**MATERIALS**

- 1. Brick 1
  - 2. Brick 2
  - 3. Brick 3
  - 4. Metal Balcony
  - 5. Metal Channel
  - 6. Metal Panel 1
  - 7. Metal Panel 2
  - 8. Metal Railing
  - 9. Metal Window 1
  - 10. Metal Window 2
  - 11. Precast Stone 1
  - 12. Precast Stone 2
  - 13. Precast Stone 3
  - 14. Stone
- See Sheets 1.501 to 1.506 for material locations



**KEY PLAN**

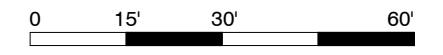
MRP | REALTY

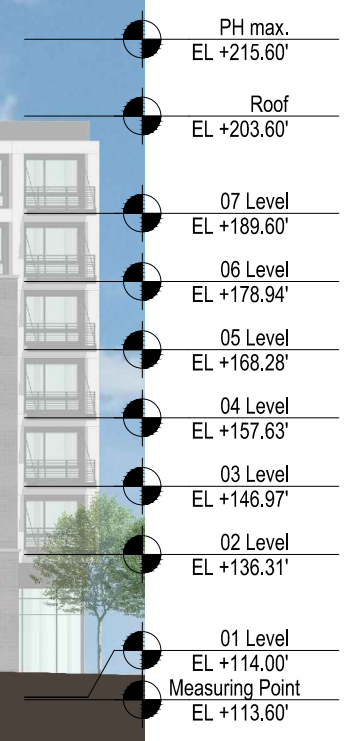
680 Rhode Island Ave. | Washington, DC

April 29, 2016 | 1.225



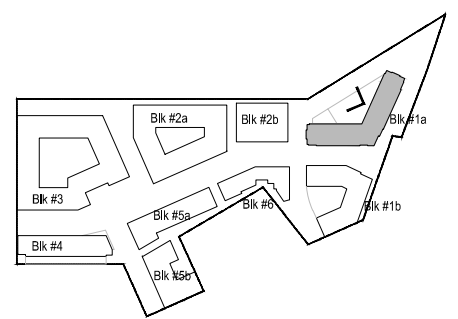
Block 1A -North Courtyard Elevation



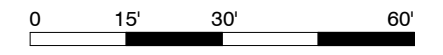


**MATERIALS**

- 1. Brick 1
  - 2. Brick 2
  - 3. Brick 3
  - 4. Metal Balcony
  - 5. Metal Channel
  - 6. Metal Panel 1
  - 7. Metal Panel 2
  - 8. Metal Railing
  - 9. Metal Window 1
  - 10. Metal Window 2
  - 11. Precast Stone 1
  - 12. Precast Stone 2
  - 13. Precast Stone 3
  - 14. Stone
- See Sheets 1.501 to 1.506 for material locations



**KEY PLAN**

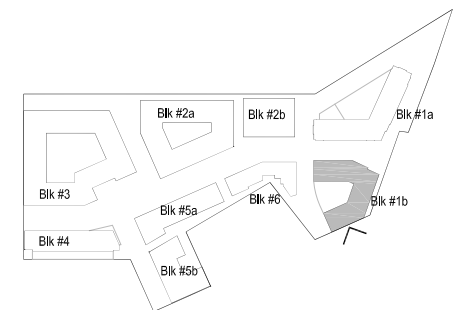
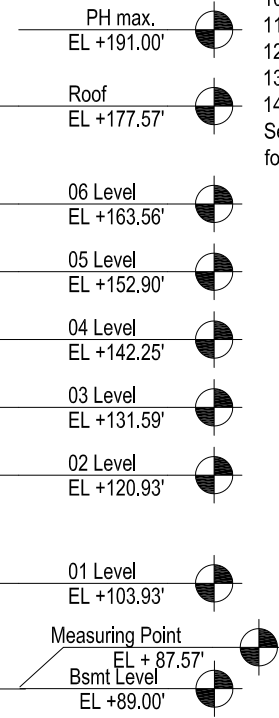






MATERIALS

- 1. Brick 1
  - 2. Brick 2
  - 3. Brick 3
  - 4. Metal Balcony
  - 5. Metal Channel
  - 6. Metal Panel 1
  - 7. Metal Panel 2
  - 8. Metal Railing
  - 9. Metal Window 1
  - 10. Metal Window 2
  - 11. Precast Stone 1
  - 12. Precast Stone 2
  - 13. Precast Stone 3
  - 14. Stone
- See Sheets 1.501 to 1.506 for material locations

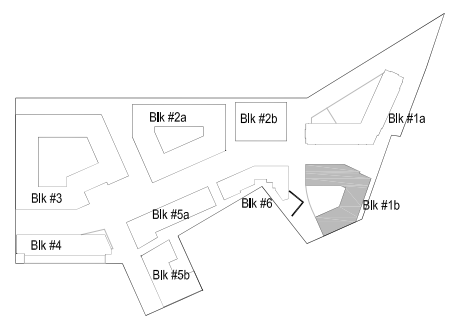
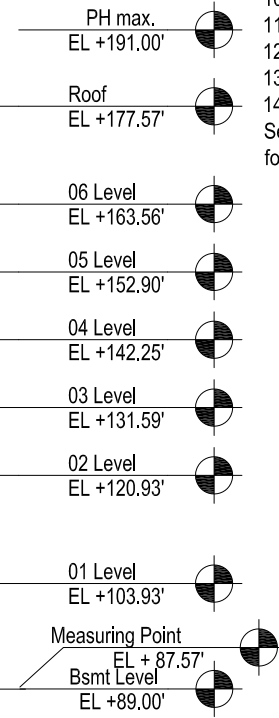


KEY PLAN



MATERIALS

- 1. Brick 1
  - 2. Brick 2
  - 3. Brick 3
  - 4. Metal Balcony
  - 5. Metal Channel
  - 6. Metal Panel 1
  - 7. Metal Panel 2
  - 8. Metal Railing
  - 9. Metal Window 1
  - 10. Metal Window 2
  - 11. Precast Stone 1
  - 12. Precast Stone 2
  - 13. Precast Stone 3
  - 14. Stone
- See Sheets 1.501 to 1.506 for material locations

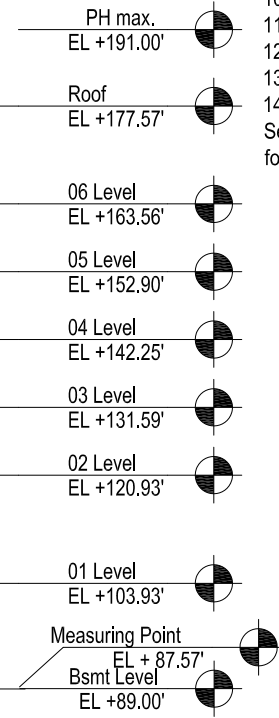


KEY PLAN

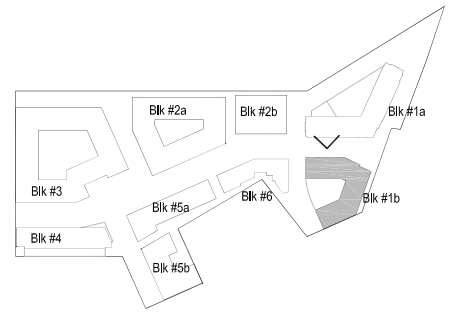


MATERIALS

- 1. Brick 1
  - 2. Brick 2
  - 3. Brick 3
  - 4. Metal Balcony
  - 5. Metal Channel
  - 6. Metal Panel 1
  - 7. Metal Panel 2
  - 8. Metal Railing
  - 9. Metal Window 1
  - 10. Metal Window 2
  - 11. Precast Stone 1
  - 12. Precast Stone 2
  - 13. Precast Stone 3
  - 14. Stone
- See Sheets 1.501 to 1.506 for material locations



Signage Canopy Area



KEY PLAN

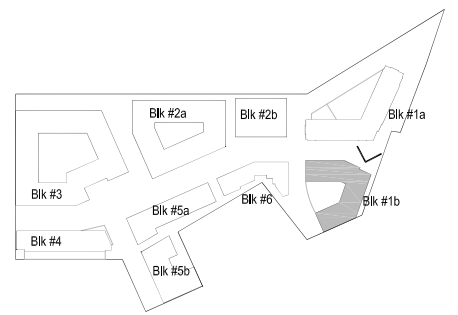
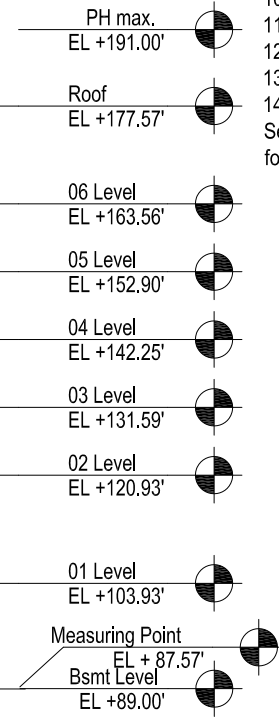






MATERIALS

- 1. Brick 1
  - 2. Brick 2
  - 3. Brick 3
  - 4. Metal Balcony
  - 5. Metal Channel
  - 6. Metal Panel 1
  - 7. Metal Panel 2
  - 8. Metal Railing
  - 9. Metal Window 1
  - 10. Metal Window 2
  - 11. Precast Stone 1
  - 12. Precast Stone 2
  - 13. Precast Stone 3
  - 14. Stone
- See Sheets 1.501 to 1.506 for material locations



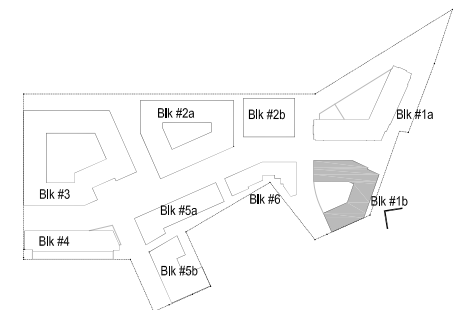
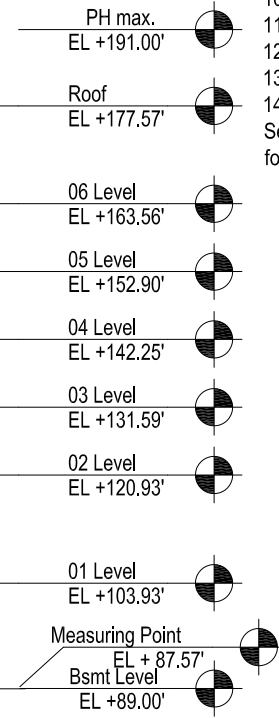
KEY PLAN



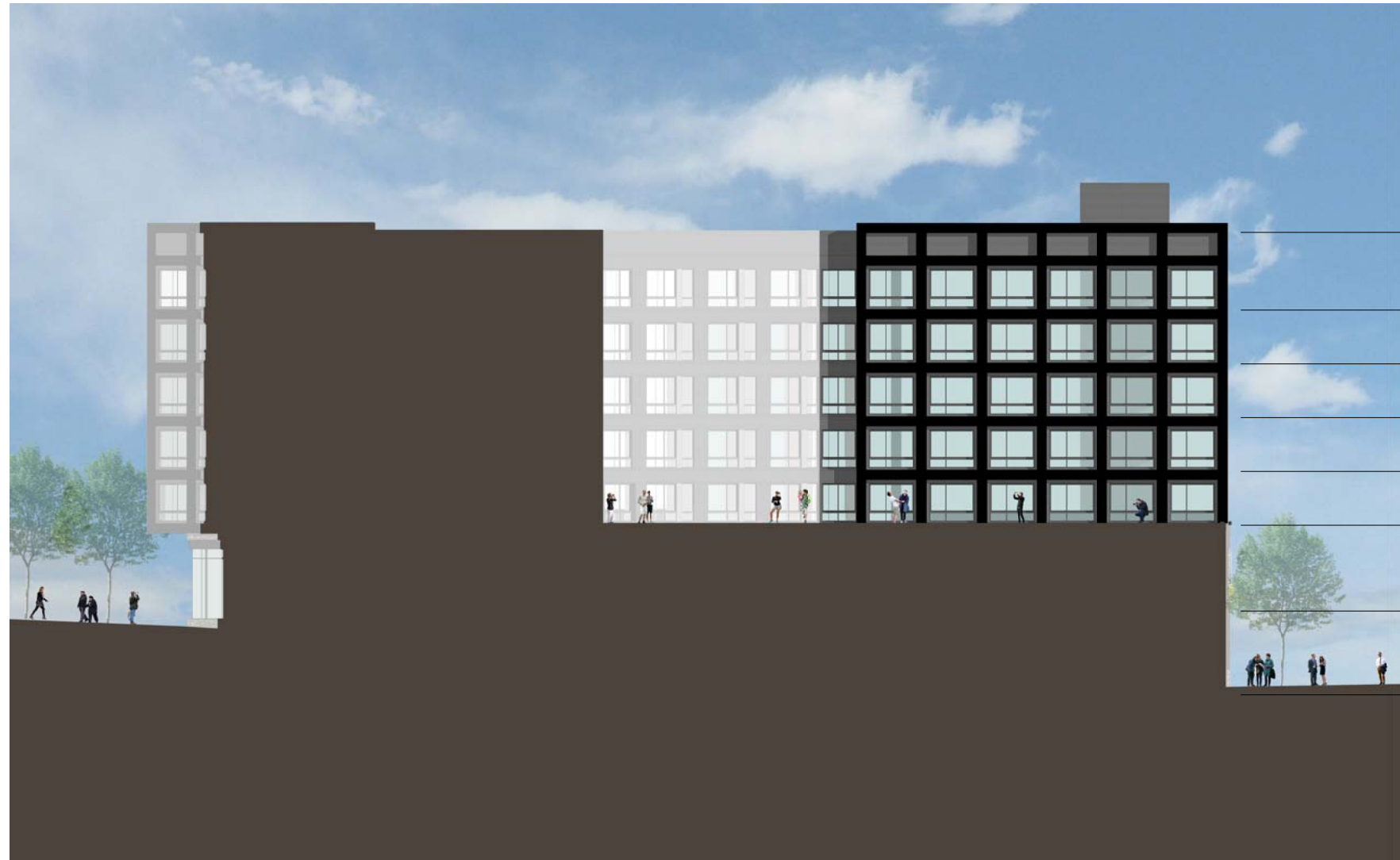


MATERIALS

- 1. Brick 1
  - 2. Brick 2
  - 3. Brick 3
  - 4. Metal Balcony
  - 5. Metal Channel
  - 6. Metal Panel 1
  - 7. Metal Panel 2
  - 8. Metal Railing
  - 9. Metal Window 1
  - 10. Metal Window 2
  - 11. Precast Stone 1
  - 12. Precast Stone 2
  - 13. Precast Stone 3
  - 14. Stone
- See Sheets 1.501 to 1.506 for material locations

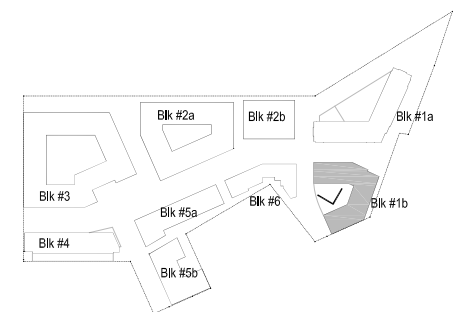
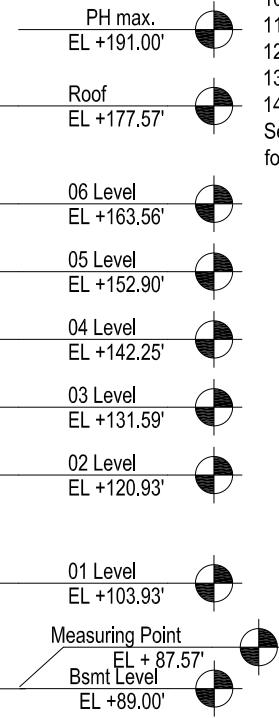


KEY PLAN



MATERIALS

- 1. Brick 1
  - 2. Brick 2
  - 3. Brick 3
  - 4. Metal Balcony
  - 5. Metal Channel
  - 6. Metal Panel 1
  - 7. Metal Panel 2
  - 8. Metal Railing
  - 9. Metal Window 1
  - 10. Metal Window 2
  - 11. Precast Stone 1
  - 12. Precast Stone 2
  - 13. Precast Stone 3
  - 14. Stone
- See Sheets 1.501 to 1.506 for material locations

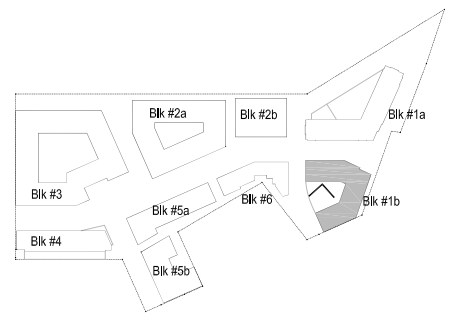
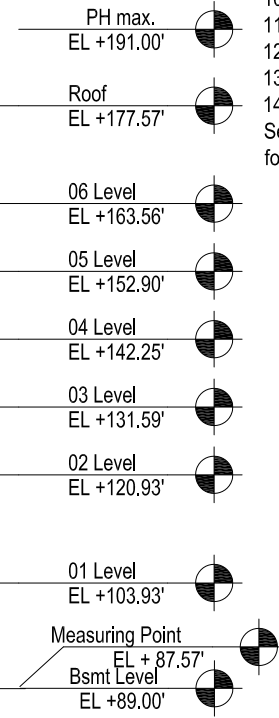


KEY PLAN



MATERIALS

- 1. Brick 1
  - 2. Brick 2
  - 3. Brick 3
  - 4. Metal Balcony
  - 5. Metal Channel
  - 6. Metal Panel 1
  - 7. Metal Panel 2
  - 8. Metal Railing
  - 9. Metal Window 1
  - 10. Metal Window 2
  - 11. Precast Stone 1
  - 12. Precast Stone 2
  - 13. Precast Stone 3
  - 14. Stone
- See Sheets 1.501 to 1.506 for material locations



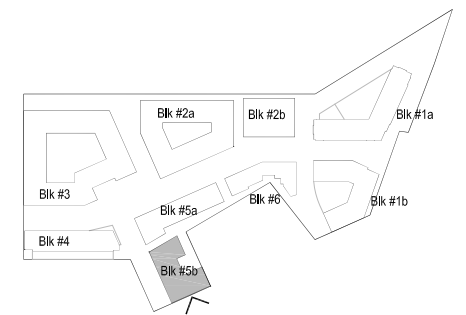
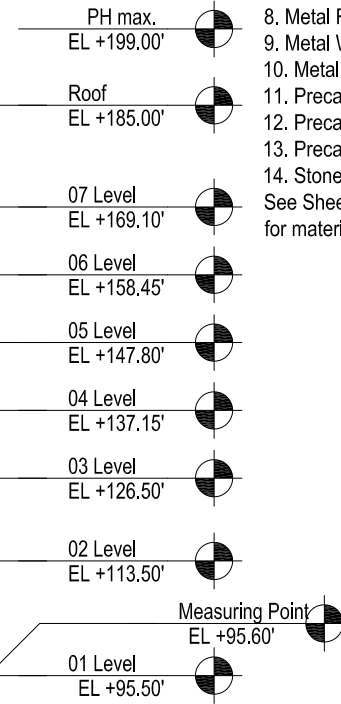
KEY PLAN





MATERIALS

- 1. Brick 1
  - 2. Brick 2
  - 3. Brick 3
  - 4. Metal Balcony
  - 5. Metal Channel
  - 6. Metal Panel 1
  - 7. Metal Panel 2
  - 8. Metal Railing
  - 9. Metal Window 1
  - 10. Metal Window 2
  - 11. Precast Stone 1
  - 12. Precast Stone 2
  - 13. Precast Stone 3
  - 14. Stone
- See Sheets 1.501 to 1.506 for material locations



KEY PLAN

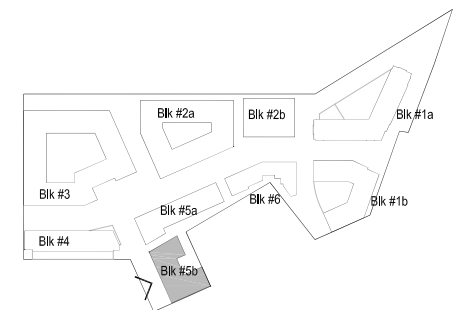


**MATERIALS**

1. Brick 1
2. Brick 2
3. Brick 3
4. Metal Balcony
5. Metal Channel
6. Metal Panel 1
7. Metal Panel 2
8. Metal Railing
9. Metal Window 1
10. Metal Window 2
11. Precast Stone 1
12. Precast Stone 2
13. Precast Stone 3
14. Stone

See Sheets 1.501 to 1.506 for material locations

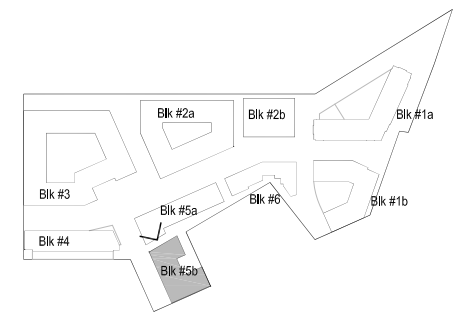
PH max. EL +199.00'	
Roof EL +185.00'	
07 Level EL +169.10'	
06 Level EL +158.45'	
05 Level EL +147.80'	
04 Level EL +137.15'	
03 Level EL +126.50'	
02 Level EL +113.50'	
Measuring Point EL +95.60'	
01 Level EL +95.50'	



**KEY PLAN**



- MATERIALS**
1. Brick 1
  2. Brick 2
  3. Brick 3
  4. Metal Balcony
  5. Metal Channel
  6. Metal Panel 1
  7. Metal Panel 2
  8. Metal Railing
  9. Metal Window 1
  10. Metal Window 2
  11. Precast Stone 1
  12. Precast Stone 2
  13. Precast Stone 3
  14. Stone
- See Sheets 1.501 to 1.506 for material locations
- PH max. EL +199.00'
  - Roof EL +185.00'
  - 07 Level EL +169.10'
  - 06 Level EL +158.45'
  - 05 Level EL +147.80'
  - 04 Level EL +137.15'
  - 03 Level EL +126.50'
  - 02 Level EL +113.50'
  - Measuring Point EL +95.60'
  - 01 Level EL +95.50'

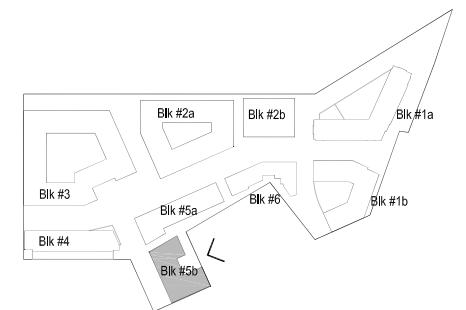


**KEY PLAN**





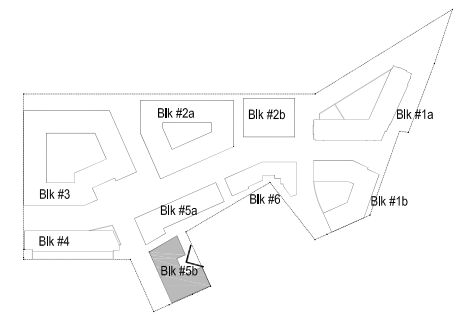
- MATERIALS**
1. Brick 1
  2. Brick 2
  3. Brick 3
  4. Metal Balcony
  5. Metal Channel
  6. Metal Panel 1
  7. Metal Panel 2
  8. Metal Railing
  9. Metal Window 1
  10. Metal Window 2
  11. Precast Stone 1
  12. Precast Stone 2
  13. Precast Stone 3
  14. Stone
- See Sheets 1.501 to 1.506 for material locations
- PH max. EL +199.00'
  - Roof EL +185.00'
  - 07 Level EL +169.10'
  - 06 Level EL +158.45'
  - 05 Level EL +147.80'
  - 04 Level EL +137.15'
  - 03 Level EL +126.50'
  - 02 Level EL +113.50'
  - Measuring Point EL +95.60'
  - 01 Level EL +95.50'



**KEY PLAN**



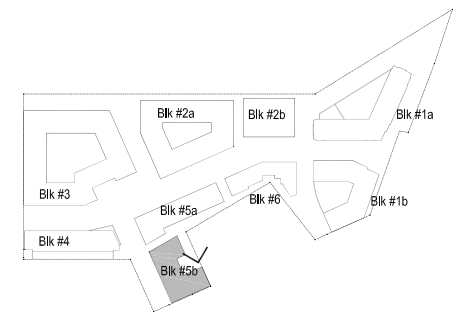
- MATERIALS**
1. Brick 1
  2. Brick 2
  3. Brick 3
  4. Metal Balcony
  5. Metal Channel
  6. Metal Panel 1
  7. Metal Panel 2
  8. Metal Railing
  9. Metal Window 1
  10. Metal Window 2
  11. Precast Stone 1
  12. Precast Stone 2
  13. Precast Stone 3
  14. Stone
- See Sheets 1.501 to 1.506 for material locations
- PH max.  
EL +199.00'
- Roof  
EL +185.00'
- 07 Level  
EL +169.10'
- 06 Level  
EL +158.45'
- 05 Level  
EL +147.80'
- 04 Level  
EL +137.15'
- 03 Level  
EL +126.50'
- 02 Level  
EL +113.50'
- Measuring Point  
EL +95.60'
- 01 Level  
EL +95.50'



**KEY PLAN**



- MATERIALS**
1. Brick 1
  2. Brick 2
  3. Brick 3
  4. Metal Balcony
  5. Metal Channel
  6. Metal Panel 1
  7. Metal Panel 2
  8. Metal Railing
  9. Metal Window 1
  10. Metal Window 2
  11. Precast Stone 1
  12. Precast Stone 2
  13. Precast Stone 3
  14. Stone
- See Sheets 1.501 to 1.506 for material locations
- PH max.  
EL +199.00'
  - Roof  
EL +185.00'
  - 07 Level  
EL +169.10'
  - 06 Level  
EL +158.45'
  - 05 Level  
EL +147.80'
  - 04 Level  
EL +137.15'
  - 03 Level  
EL +126.50'
  - 02 Level  
EL +113.50'
  - Measuring Point  
EL +95.60'
  - 01 Level  
EL +95.50'

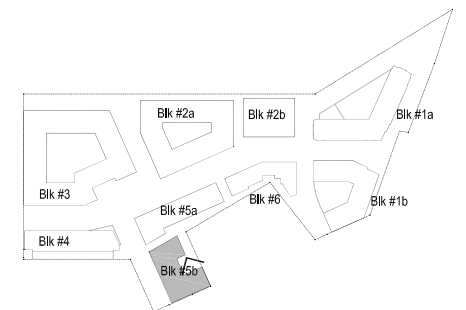


**KEY PLAN**

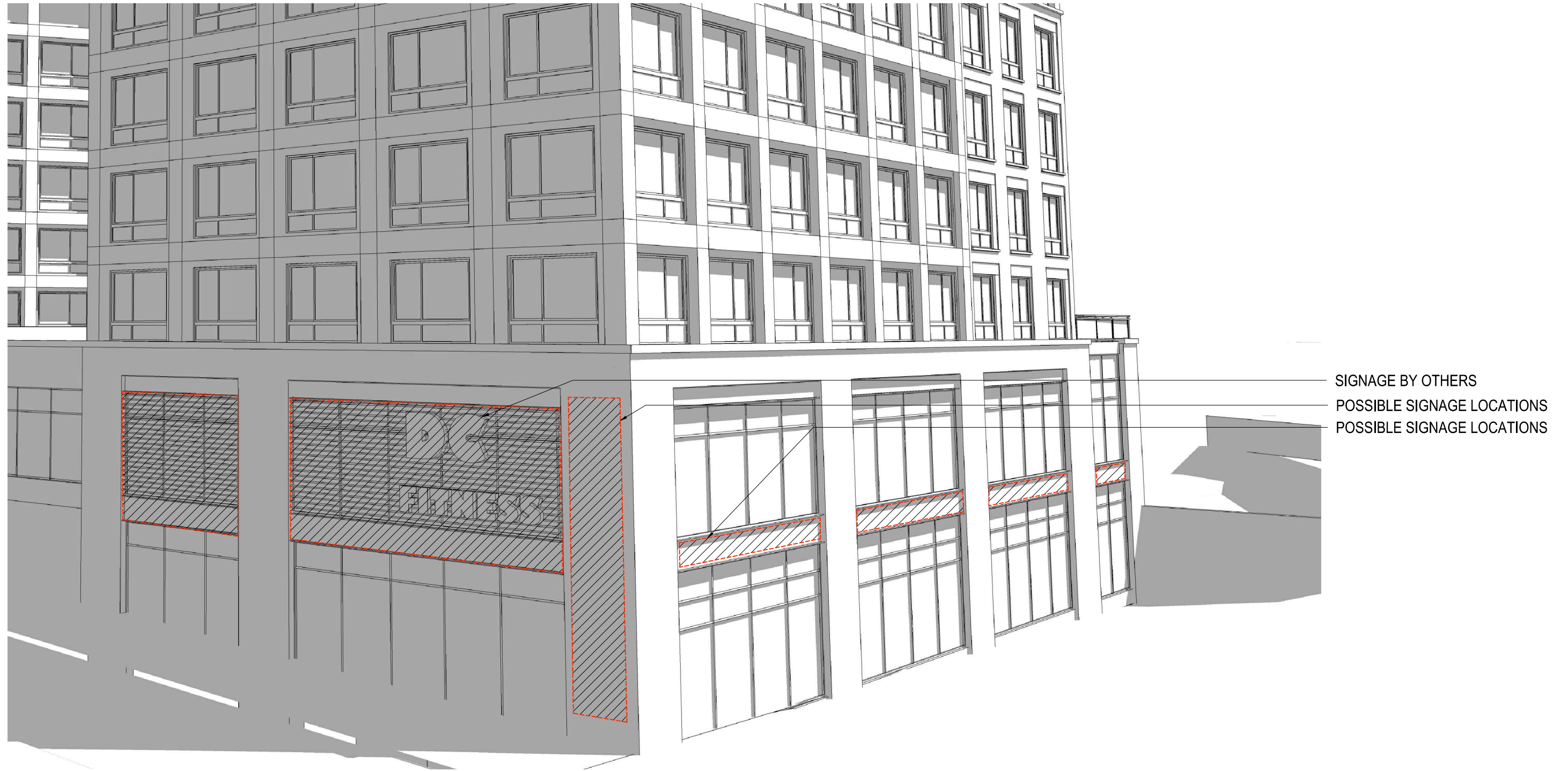




- MATERIALS**
1. Brick 1
  2. Brick 2
  3. Brick 3
  4. Metal Balcony
  5. Metal Channel
  6. Metal Panel 1
  7. Metal Panel 2
  8. Metal Railing
  9. Metal Window 1
  10. Metal Window 2
  11. Precast Stone 1
  12. Precast Stone 2
  13. Precast Stone 3
  14. Stone
- See Sheets 1.501 to 1.506 for material locations
- PH max. EL +199.00'
  - Roof EL +185.00'
  - 07 Level EL +169.10'
  - 06 Level EL +158.45'
  - 05 Level EL +147.80'
  - 04 Level EL +137.15'
  - 03 Level EL +126.50'
  - 02 Level EL +113.50'
  - Measuring Point EL +95.60'
  - 01 Level EL +95.50'



**KEY PLAN**



Note: The existing pylon signs on Rhode Island Avenue and 4th Street will be removed, upgraded and replaced during construction of Phase I.





- SIGNAGE BY OTHERS
- POSSIBLE SIGNAGE LOCATIONS
- POSSIBLE SIGNAGE LOCATIONS

Note: The existing pylon signs on Rhode Island Avenue and 4th Street will be removed, upgraded and replaced during construction of Phase I.