

ECKINGTON YARDS

1611-1625 ECKINGTON PLACE + 1500 HARRY THOMAS WAY, NE WASHINGTON DC 20002
PUD | Z.C. CASE NO. 15-15A - REQUEST FOR PUD MODIFICATION OF CONSEQUENCE

<http://www.boundaryco.com/>

Approved set - July 5, 2016

Updated set - July 23, 2018



"ECKINGTON YARDS WEST"
1611-1625 ECKINGTON PLACE, NE
SQUARE: 3576 LOT: 0805 (2001-2008)

"ECKINGTON YARDS EAST"
1500 HARRY THOMAS WAY, NE
SQUARE: 3576 LOTS: 0814

OWNER/APPLICANT:
JBG/Boundary 1500 Harry Thomas Way, LLC
JBG/Boundary Eckington Place, LLC
Joint Ventures between
The Boundary Companies
The JBG Companies

LAND USE COUNSEL:
Goulston & Storrs PC

ARCHITECT:
Eric Colbert & Associates

LANDSCAPE ARCHITECT:
LandDesign

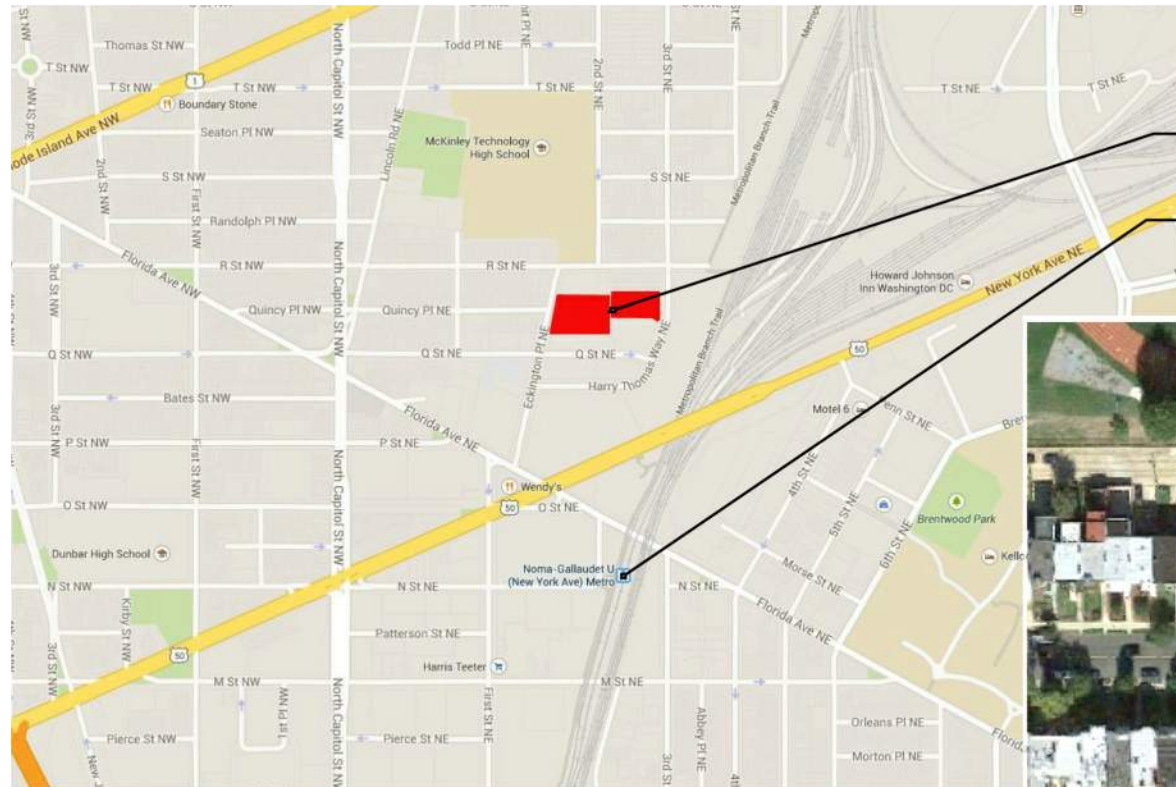
CIVIL ENGINEER:
Bowman Consulting

TRAFFIC CONSULTANT:
Gorove/Slade Associates

LEED CONSULTANT:
Sustainable Design Consulting

ZONING COMMISSION
District of Columbia

THIS PAGE INTENTIONALLY LEFT BLANK

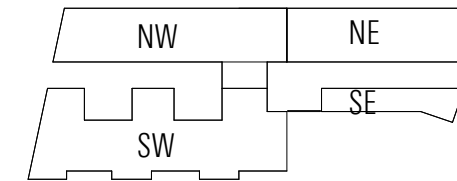


PROJECT SITE

METRO STATION
0.4 MILES (9 MIN. WALK)



LOCATION MAPS



Approved PUD

ECKINGTON YARDS EAST | PERSPECTIVE @ HARRY THOMAS WAY, NE

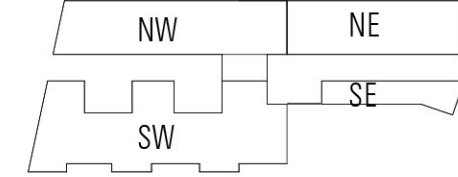
ERIC COLBERT & ASSOCIATES
717 5TH STREET, NW | WASHINGTON, DC 20001



BOUNDARY COMPANIES / JBG
4445 WILLARD AVE SUITE 400 BETHESDA MD, 20815

ECKINGTON YARDS | EAST + WEST
1611-1625 ECKINGTON PLACE + 1500 HARRY THOMAS WAY NE WASHINGTON, DC 20002

CONSOLIDATED SUBMISSION | A2.10
07/05/2016



**AREA OF
MODIFICATION**



Proposed Modification

ECKINGTON YARDS EAST | PERSPECTIVE @ HARRY THOMAS WAY, NE

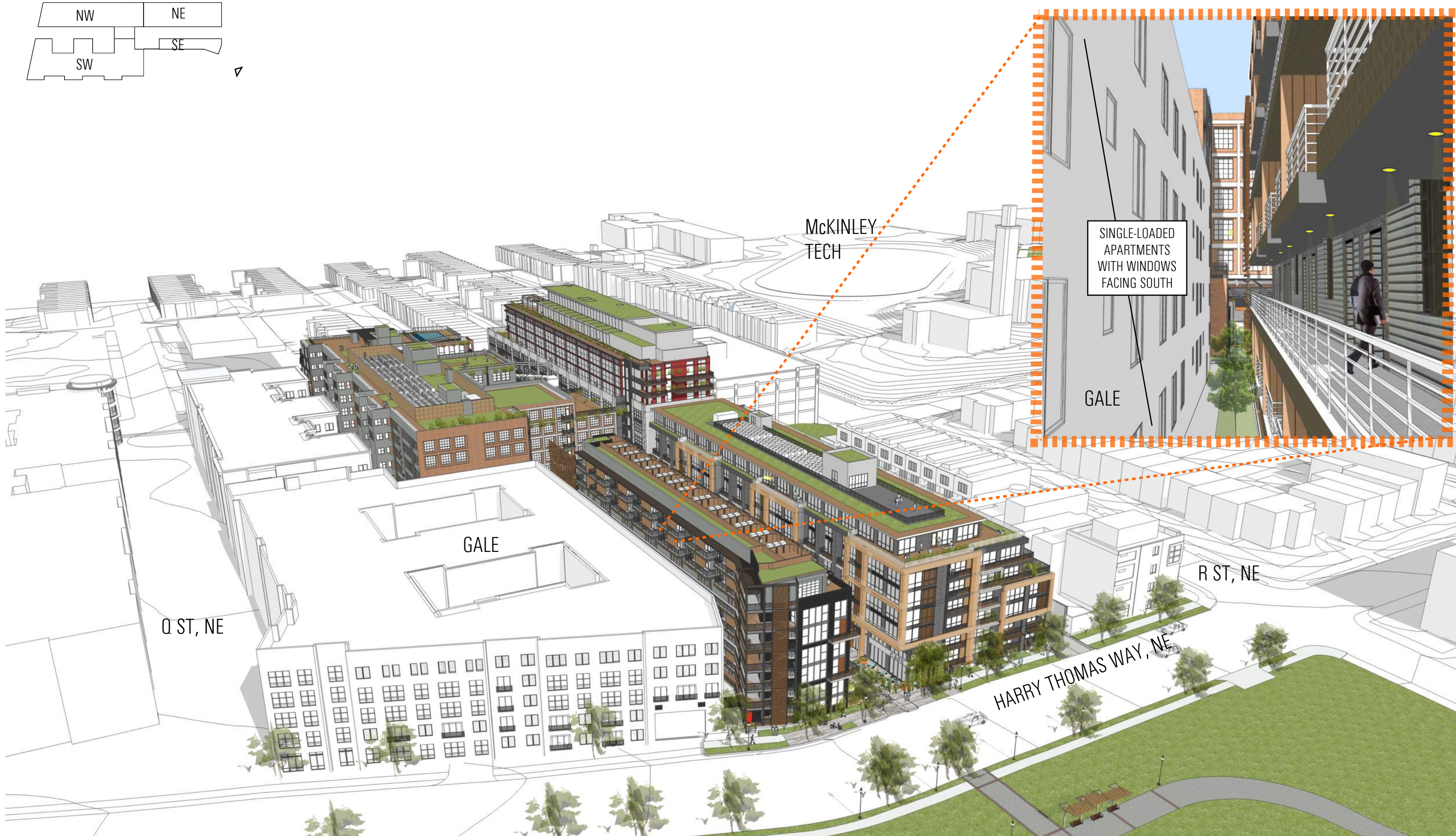
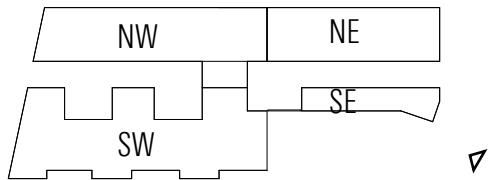
ERIC COLBERT & ASSOCIATES
717 5TH STREET, NW | WASHINGTON, DC 20001



BOUNDARY COMPANIES / JBG
4445 WILLARD AVE SUITE 400 BETHESDA MD, 20815

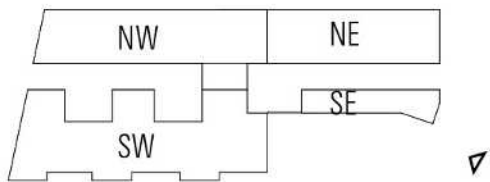
ECKINGTON YARDS | EAST + WEST
1611-1625 ECKINGTON PLACE + 1500 HARRY THOMAS WAY NE WASHINGTON, DC 20002

REQUEST FOR MODIFICATION | A2.10B
07/23/2018



Approved PUD

ECKINGTON YARDS EAST | MASSING VIEWS @ NEIGHBORING BUILDING (GALE APARTMENTS)



**PRIOR
MODIFICATION
PROPOSAL**

McKINLEY
TECH

SINGLE-LOADED
APARTMENTS
WITH WINDOWS
FACING SOUTH

GALE

**AREA OF
MODIFICATION**

SINGLE-LOADED
APARTMENTS
WITH WINDOWS
FACING SOUTH

GALE

GALE

R ST, NE

HARRY THOMAS WAY, NE

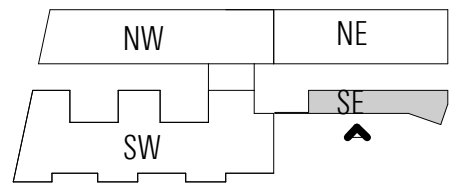
Proposed Modification

ECKINGTON YARDS EAST | MASSING VIEWS @ NEIGHBORING BUILDING (GALE APARTMENTS)



Notes:

1. Refer to floor plans for overall building dimensions.
2. Refer to sections for overall building height.
3. The exterior elevations, including door and window sizes and locations, the interior partition locations, the number, size, and locations of residential units, outdoor space, stairs, balcony and elevators are preliminary and shown for illustrative purposes only. The parking space layout is shown for illustrative purposes only. The final layouts may vary.
4. Retail storefronts and signage are for illustrative purposes only and are subject to tenant modification. Applicant requests the flexibility to vary the final selection of the exterior materials within the color ranges and material types (maintaining the same general level of quality) proposed, based on availability at the time of construction and further project design.



SE | SOUTH ELEVATION

Approved PUD