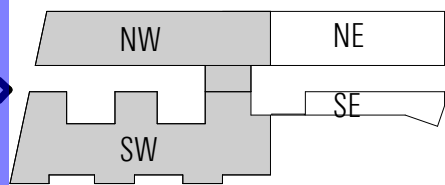


SHEET REVISED 04/22/2016



Notes:

1. Refer to floor plans for overall building dimensions.
2. Refer to sections for overall building height.
3. The exterior elevations, including door and window sizes and locations, the interior partition locations, the number, size, and locations of residential units, outdoor space, stairs, balcony and elevators are preliminary and shown for illustrative purposes only. The parking space layout is shown for illustrative purposes only. The final layouts may vary.
4. Retail storefronts and signage are for illustrative purposes only and are subject to tenant modification. Applicant requests the flexibility to vary the final selection of the exterior materials within the color ranges and material types (maintaining the same general level of quality) proposed, based on availability at the time of construction and further project design.



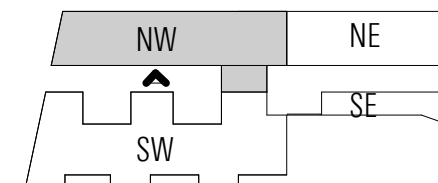
ECKINGTON PLACE STREET ELEVATION



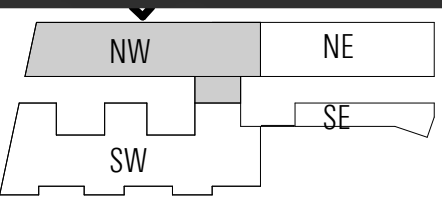
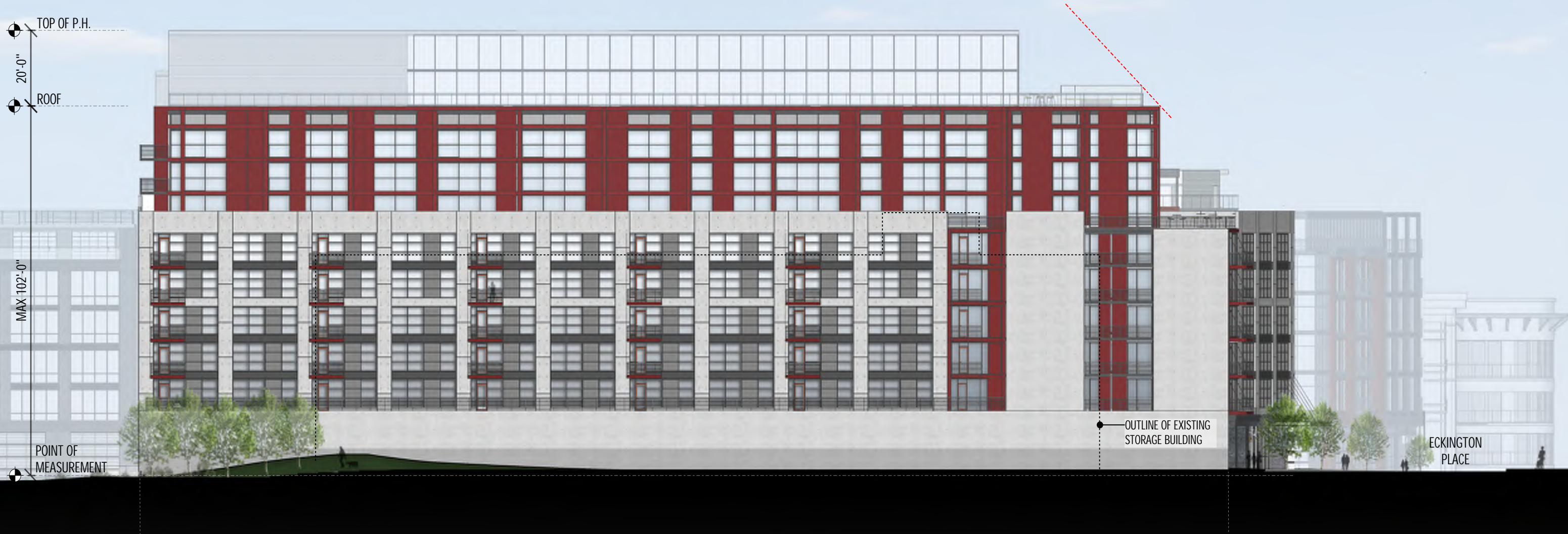
SHEET REVISED 04/22/2016

Notes:

1. Refer to floor plans for overall building dimensions.
2. Refer to sections for overall building height.
3. The exterior elevations, including door and window sizes and locations, the interior partition locations, the number, size, and locations of residential units, outdoor space, stairs, balcony and elevators are preliminary and shown for illustrative purposes only. The parking space layout is shown for illustrative purposes only. The final layouts may vary.
4. Retail storefronts and signage are for illustrative purposes only and are subject to tenant modification. Applicant requests the flexibility to vary the final selection of the exterior materials within the color ranges and material types (maintaining the same general level of quality) proposed, based on availability at the time of construction and further project design.



NW | SOUTH ELEVATION



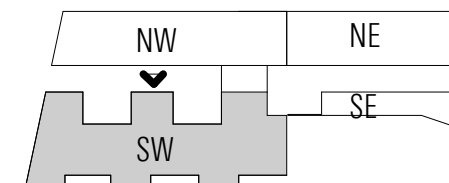
2. Refer to sections for overall building height.
3. The exterior elevations, including door and window sizes and locations, the interior partition locations, the number, size, and locations of residential units, outdoor space, stairs, balcony and elevators are preliminary and shown for illustrative purposes only. The parking space layout is shown for illustrative purposes only. The final layouts may vary.
4. Retail storefronts and signage are for illustrative purposes only and are subject to tenant modification. Applicant requests the flexibility to vary the final selection of the exterior materials within the color ranges and material types (maintaining the same general level of quality) proposed, based on availability at the time of construction and further project design.

NW | NORTH ELEVATION



Notes:

1. Refer to floor plans for overall building dimensions.
2. Refer to sections for overall building height.
3. The exterior elevations, including door and window sizes and locations, the interior partition locations, the number, size, and locations of residential units, outdoor space, stairs, balcony and elevators are preliminary and shown for illustrative purposes only. The parking space layout is shown for illustrative purposes only. The final layouts may vary.
4. Retail storefronts and signage are for illustrative purposes only and are subject to tenant modification. Applicant requests the flexibility to vary the final selection of the exterior materials within the color ranges and material types (maintaining the same general level of quality) proposed, based on availability at the time of construction and further project design.



SW | NORTH ELEVATION

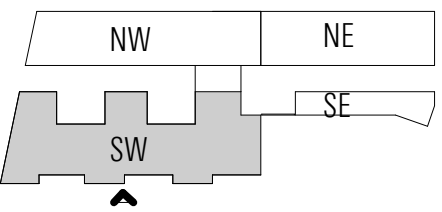
PRE-HEARING SUBMISSION | A3.04

02 / 05 / 2016



Notes:

1. Refer to floor plans for overall building dimensions.
2. Refer to sections for overall building height.
3. The exterior elevations, including door and window sizes and locations, the interior partition locations, the number, size, and locations of residential units, outdoor space, stairs, balcony and elevators are preliminary and shown for illustrative purposes only. The parking space layout is shown for illustrative purposes only. The final layouts may vary.
4. Retail storefronts and signage are for illustrative purposes only and are subject to tenant modification. Applicant requests the flexibility to vary the final selection of the exterior materials within the color ranges and material types (maintaining the same general level of quality) proposed, based on availability at the time of construction and further project design.

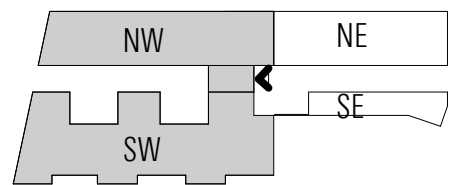


SW | SOUTH ELEVATION



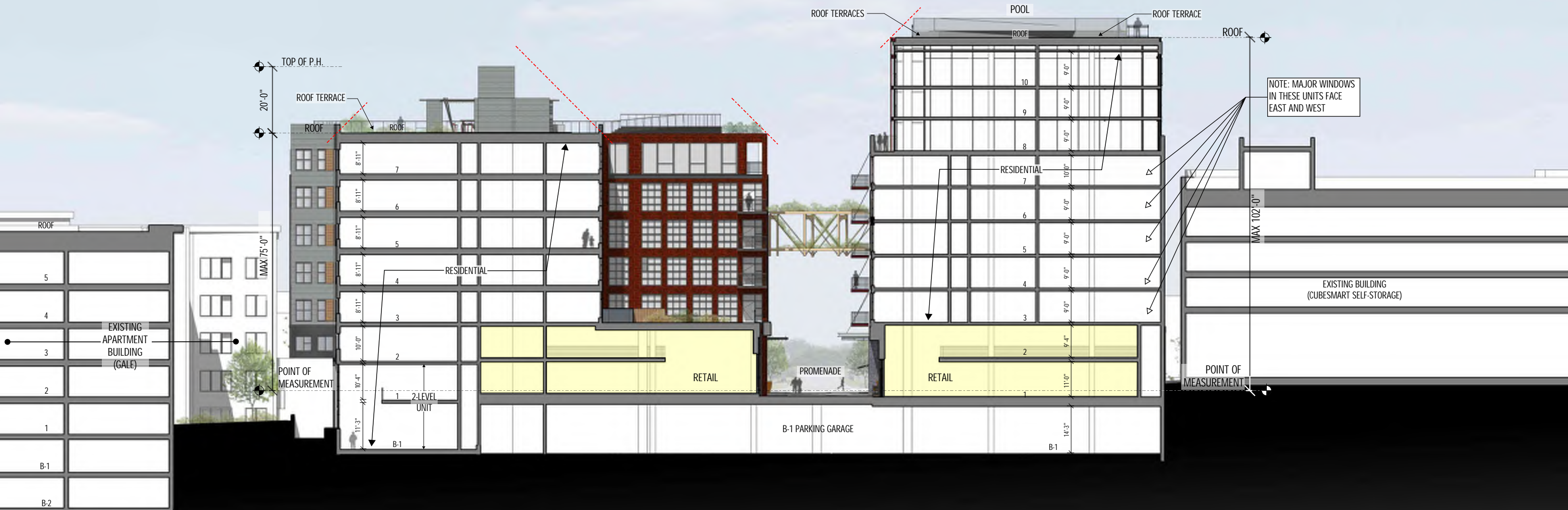
Notes:

1. Refer to floor plans for overall building dimensions.
2. Refer to sections for overall building height.
3. The exterior elevations, including door and window sizes and locations, the interior partition locations, the number, size, and locations of residential units, outdoor space, stairs, balcony and elevators are preliminary and shown for illustrative purposes only. The parking space layout is shown for illustrative purposes only. The final layouts may vary.
4. Retail storefronts and signage are for illustrative purposes only and are subject to tenant modification. Applicant requests the flexibility to vary the final selection of the exterior materials within the color ranges and material types (maintaining the same general level of quality) proposed, based on availability at the time of construction and further project design.



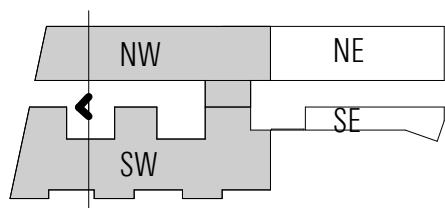
NW + SW | EAST ELEVATION

PRE-HEARING SUBMISSION | A3.06

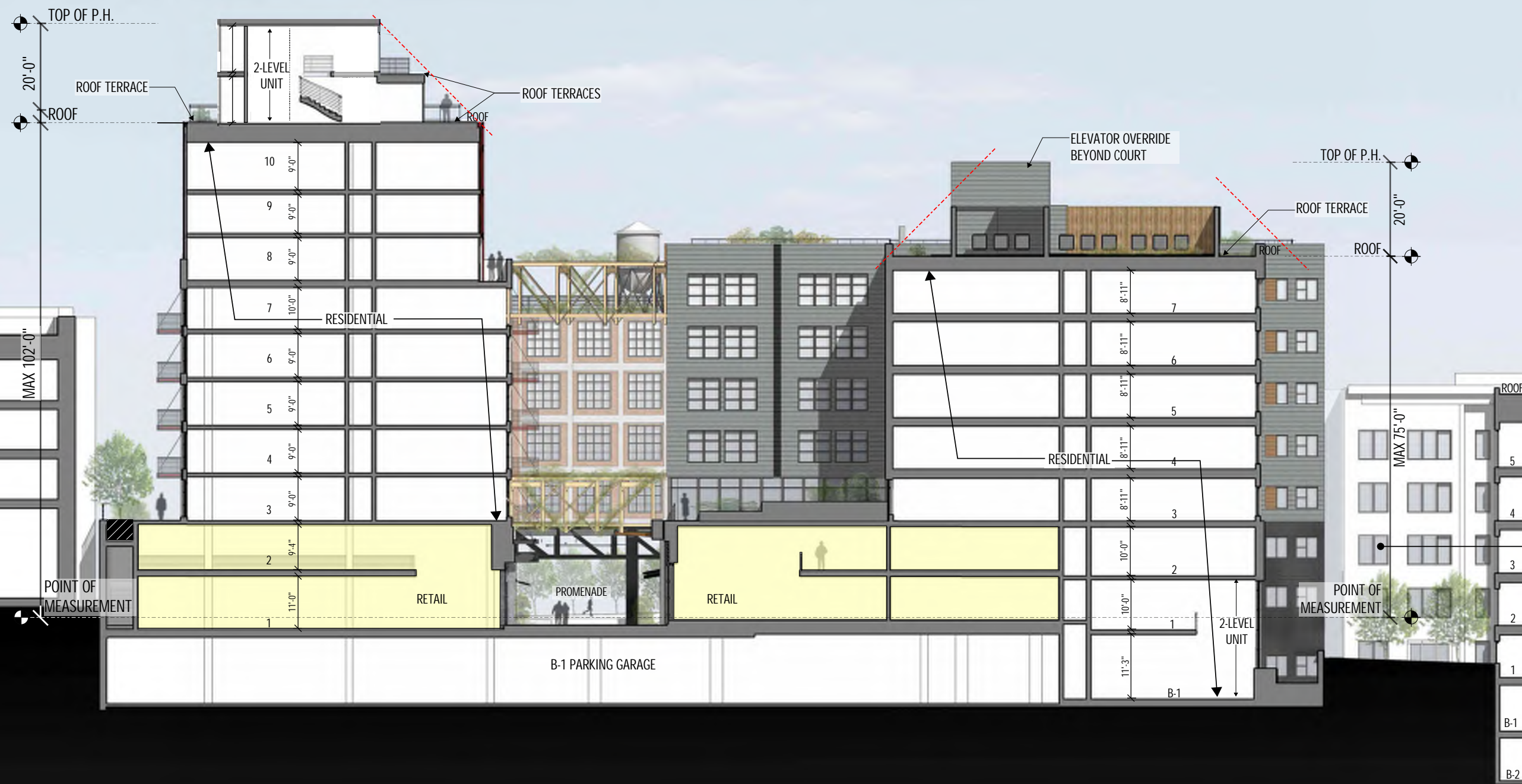


Notes:

1. Refer to floor plans for overall building dimensions.
2. Refer to sections for overall building height.
3. The exterior elevations, including door and window sizes and locations, the interior partition locations, the number, size, and locations of residential units, outdoor space, stairs, balcony and elevators are preliminary and shown for illustrative purposes only. The parking space layout is shown for illustrative purposes only. The final layouts may vary.
4. Retail storefronts and signage are for illustrative purposes only and are subject to tenant modification. Applicant requests the flexibility to vary the final selection of the exterior materials within the color ranges and material types (maintaining the same general level of quality) proposed, based on availability at the time of construction and further project design.



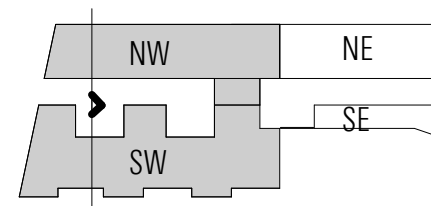
NW + SW | SECTION FACING WEST



SHEET REVISED 04/22/2016

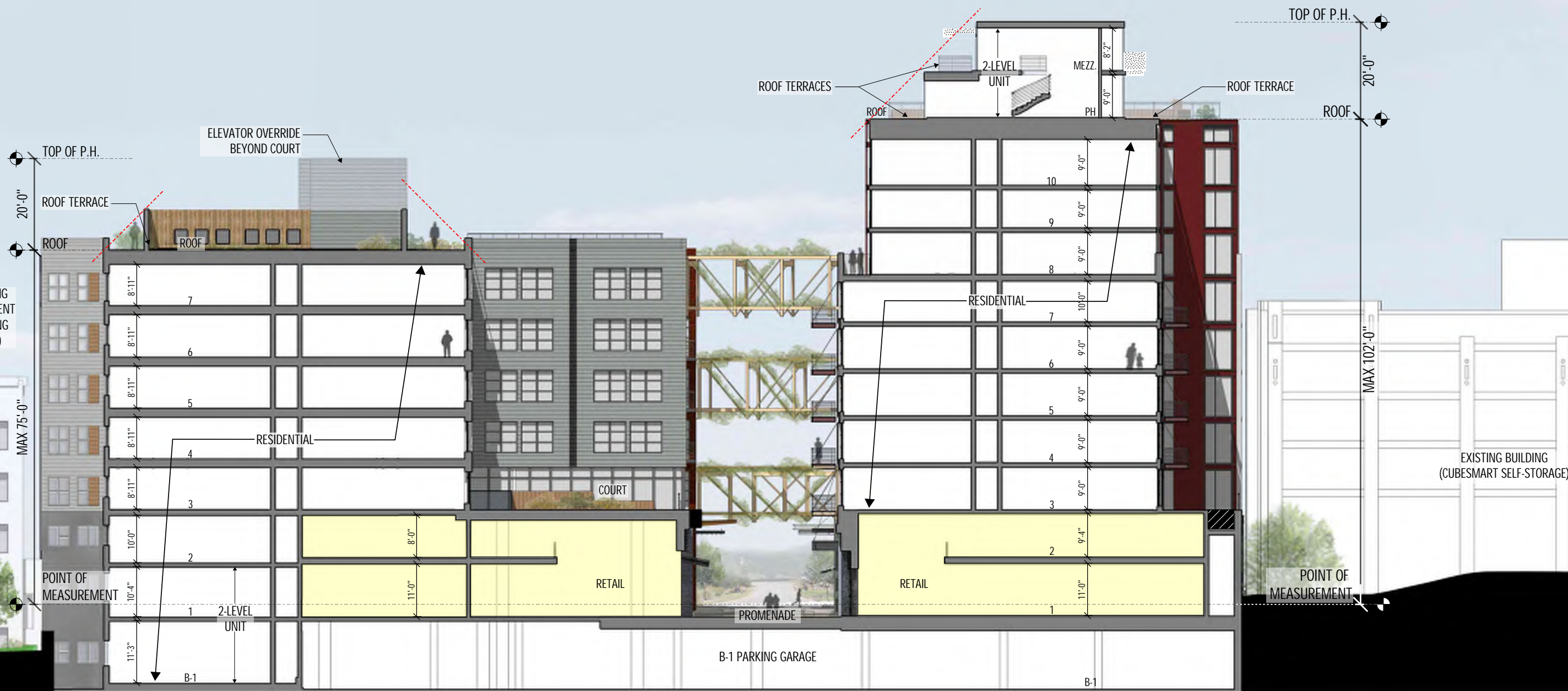
Notes:

1. Refer to floor plans for overall building dimensions.
2. Refer to sections for overall building height.
3. The exterior elevations, including door and window sizes and locations, the interior partition locations, the number, size, and locations of residential units, outdoor space, stairs, balcony and elevators are preliminary and shown for illustrative purposes only. The parking space layout is shown for illustrative purposes only. The final layouts may vary.
4. Retail storefronts and signage are for illustrative purposes only and are subject to tenant modification. Applicant requests the flexibility to vary the final selection of the exterior materials within the color ranges and material types (maintaining the same general level of quality) proposed, based on availability at the time of construction and further project design.



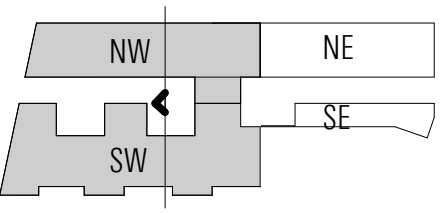
NW + SW | SECTION FACING EAST

SHEET REVISED 04/22/2016

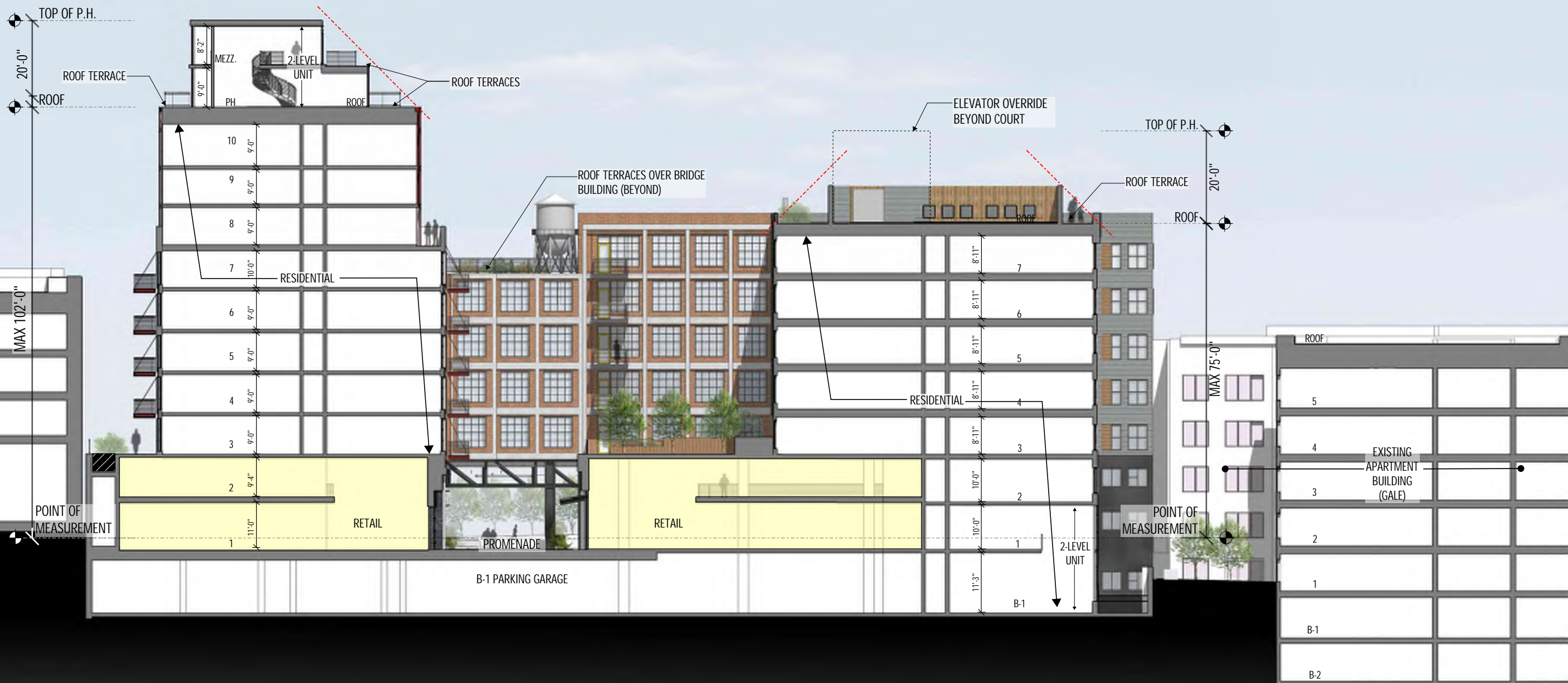


Notes:

1. Refer to floor plans for overall building dimensions.
2. Refer to sections for overall building height.
3. The exterior elevations, including door and window sizes and locations, the interior partition locations, the number, size, and locations of residential units, outdoor space, stairs, balcony and elevators are preliminary and shown for illustrative purposes only. The parking space layout is shown for illustrative purposes only. The final layouts may vary.
4. Retail storefronts and signage are for illustrative purposes only and are subject to tenant modification. Applicant requests the flexibility to vary the final selection of the exterior materials within the color ranges and material types (maintaining the same general level of quality) proposed, based on availability at the time of construction and further project design.



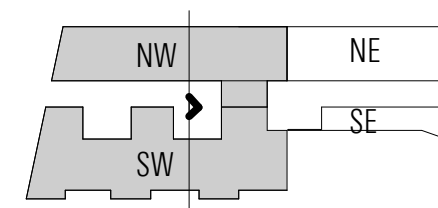
NW + SW | SECTION FACING WEST



SHEET REVISED 04/22/2016

Notes:

1. Refer to floor plans for overall building dimensions.
2. Refer to sections for overall building height.
3. The exterior elevations, including door and window sizes and locations, the interior partition locations, the number, size, and locations of residential units, outdoor space, stairs, balcony and elevators are preliminary and shown for illustrative purposes only. The parking space layout is shown for illustrative purposes only. The final layouts may vary.
4. Retail storefronts and signage are for illustrative purposes only and are subject to tenant modification. Applicant requests the flexibility to vary the final selection of the exterior materials within the color ranges and material types (maintaining the same general level of quality) proposed, based on availability at the time of construction and further project design.

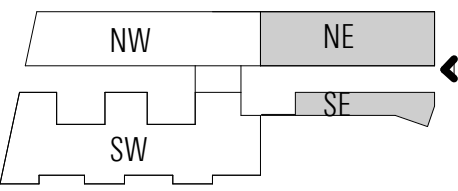


NW + SW | SECTION FACING EAST



Notes:

1. Refer to floor plans for overall building dimensions.
2. Refer to sections for overall building height.
3. The exterior elevations, including door and window sizes and locations, the interior partition locations, the number, size, and locations of residential units, outdoor space, stairs, balcony and elevators are preliminary and shown for illustrative purposes only. The parking space layout is shown for illustrative purposes only. The final layouts may vary.
4. Retail storefronts and signage are for illustrative purposes only and are subject to tenant modification. Applicant requests the flexibility to vary the final selection of the exterior materials within the color ranges and material types (maintaining the same general level of quality) proposed, based on availability at the time of construction and further project design.

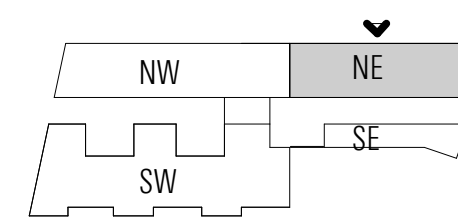


HARRY THOMAS WAY STREET ELEVATION



Notes:

1. Refer to floor plans for overall building dimensions.
2. Refer to sections for overall building height.
3. The exterior elevations, including door and window sizes and locations, the interior partition locations, the number, size, and locations of residential units, outdoor space, stairs, balcony and elevators are preliminary and shown for illustrative purposes only. The parking space layout is shown for illustrative purposes only. The final layouts may vary.
4. Retail storefronts and signage are for illustrative purposes only and are subject to tenant modification. Applicant requests the flexibility to vary the final selection of the exterior materials within the color ranges and material types (maintaining the same general level of quality) proposed, based on availability at the time of construction and further project design.

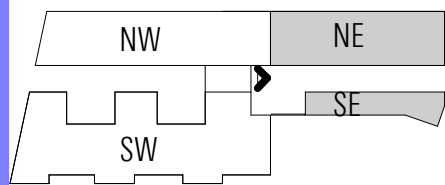


NE | NORTH ELEVATION



Notes:

1. Refer to floor plans for overall building dimensions.
2. Refer to sections for overall building height.
3. The exterior elevations, including door and window sizes and locations, the interior partition locations, the number, size, and locations of residential units, outdoor space, stairs, balcony and elevators are preliminary and shown for illustrative purposes only. The parking space layout is shown for illustrative purposes only. The final layouts may vary.
4. Retail storefronts and signage are for illustrative purposes only and are subject to tenant modification. Applicant requests the flexibility to vary the final selection of the exterior materials within the color ranges and material types (maintaining the same general level of quality) proposed, based on availability at the time of construction and further project design.



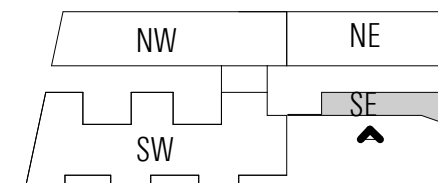
NE + SE | WEST ELEVATION



SHEET REVISED 04/22/2016

Notes:

1. Refer to floor plans for overall building dimensions.
2. Refer to sections for overall building height.
3. The exterior elevations, including door and window sizes and locations, the interior partition locations, the number, size, and locations of residential units, outdoor space, stairs, balcony and elevators are preliminary and shown for illustrative purposes only. The parking space layout is shown for illustrative purposes only. The final layouts may vary.
4. Retail storefronts and signage are for illustrative purposes only and are subject to tenant modification. Applicant requests the flexibility to vary the final selection of the exterior materials within the color ranges and material types (maintaining the same general level of quality) proposed, based on availability at the time of construction and further project design.

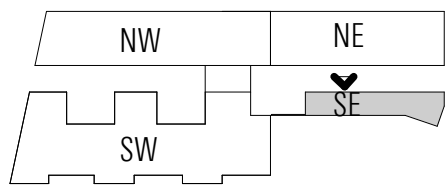


SE | SOUTH ELEVATION



Notes:

1. Refer to floor plans for overall building dimensions.
2. Refer to sections for overall building height.
3. The exterior elevations, including door and window sizes and locations, the interior partition locations, the number, size, and locations of residential units, outdoor space, stairs, balcony and elevators are preliminary and shown for illustrative purposes only. The parking space layout is shown for illustrative purposes only. The final layouts may vary.
4. Retail storefronts and signage are for illustrative purposes only and are subject to tenant modification. Applicant requests the flexibility to vary the final selection of the exterior materials within the color ranges and material types (maintaining the same general level of quality) proposed, based on availability at the time of construction and further project design.



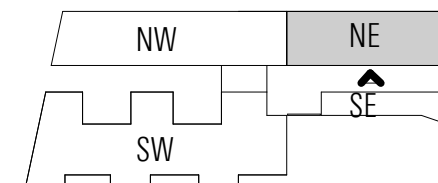
SE | NORTH ELEVATION (PROMENADE)



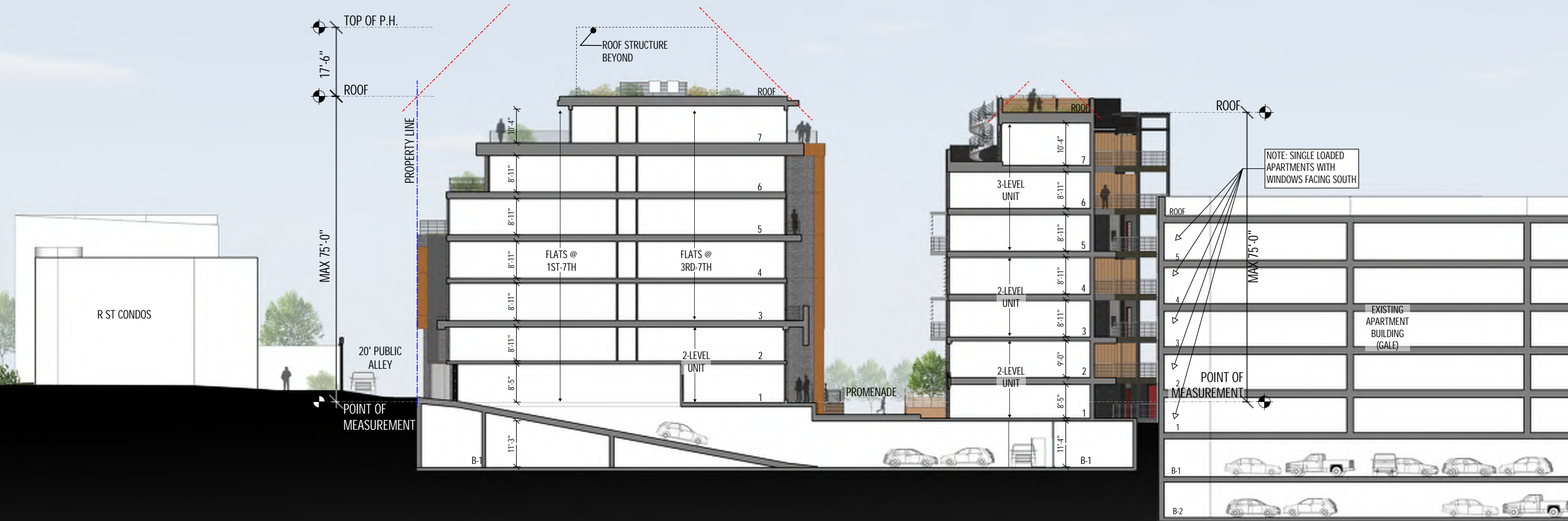
SHEET REVISED 04/22/2016

Notes:

1. Refer to floor plans for overall building dimensions.
2. Refer to sections for overall building height.
3. The exterior elevations, including door and window sizes and locations, the interior partition locations, the number, size, and locations of residential units, outdoor space, stairs, balcony and elevators are preliminary and shown for illustrative purposes only. The parking space layout is shown for illustrative purposes only. The final layouts may vary.
4. Retail storefronts and signage are for illustrative purposes only and are subject to tenant modification. Applicant requests the flexibility to vary the final selection of the exterior materials within the color ranges and material types (maintaining the same general level of quality) proposed, based on availability at the time of construction and further project design.

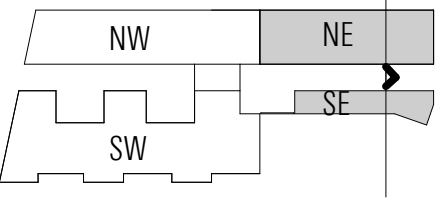


NE | SOUTH ELEVATION (PROMENADE)

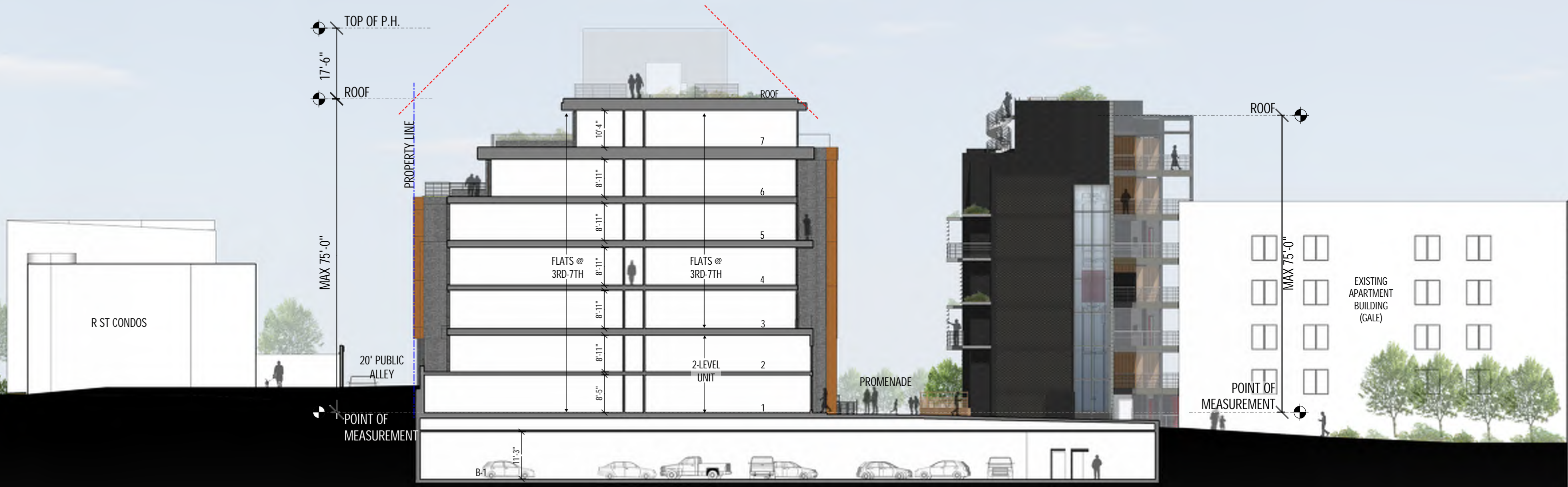


Notes:

1. Refer to floor plans for overall building dimensions.
2. Refer to sections for overall building height.
3. The exterior elevations, including door and window sizes and locations, the interior partition locations, the number, size, and locations of residential units, outdoor space, stairs, balcony and elevators are preliminary and shown for illustrative purposes only. The parking space layout is shown for illustrative purposes only. The final layouts may vary.
4. Retail storefronts and signage are for illustrative purposes only and are subject to tenant modification. Applicant requests the flexibility to vary the final selection of the exterior materials within the color ranges and material types (maintaining the same general level of quality) proposed, based on availability at the time of construction and further project design.

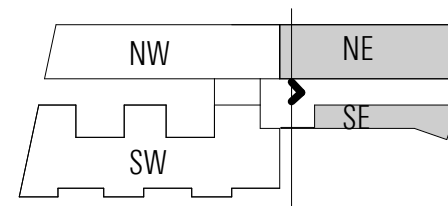


NE + SE | SECTION FACING EAST



Notes:

1. Refer to floor plans for overall building dimensions.
2. Refer to sections for overall building height.
3. The exterior elevations, including door and window sizes and locations, the interior partition locations, the number, size, and locations of residential units, outdoor space, stairs, balcony and elevators are preliminary and shown for illustrative purposes only. The parking space layout is shown for illustrative purposes only. The final layouts may vary.
4. Retail storefronts and signage are for illustrative purposes only and are subject to tenant modification. Applicant requests the flexibility to vary the final selection of the exterior materials within the color ranges and material types (maintaining the same general level of quality) proposed, based on availability at the time of construction and further project design.



NE + SE | SECTION FACING EAST